

BREAKAWAY — FERRETTI YACHTS



Builder: [FERRETTI YACHTS](#)

LOA: 63' 0" (19.20m)

Year Built: 2009

Beam: 18' 2" (5.54m)

Model: Motor Yacht

Max Draft: 5' 3" (1.60m)

Price: PRICE ON APPLICATION

Location: United States

Our experienced yacht broker, Andrey Shestakov, will help you choose and buy a yacht that best suits your needs **Breakaway — FERRETTI YACHTS** from our catalogue. Presently, at Shestakov Yacht Sales Inc., we have a wide variety of yachts available on our sale's list. We also work in close contact with all the big yacht manufacturers from all over the world.

If you would like to buy a yacht **Breakaway — FERRETTI YACHTS** or would like help answering any questions concerning purchasing, selling or chartering a yacht, please call **+1(954)274-4435**

TABLE OF CONTENTS

TABLE OF CONTENTS	2
SPECIFICATIONS	4
Overview	4
Basic Information	4
Dimensions	4
Speed, Capacities and Weight	4
Accommodations	4
Hull and Deck Information	4
Engine Information	5
DETAILED INFORMATION	6
Highlights	6
Wheelhouse/Dinette	6
Salon	7
Galley	7
Master Stateroom-Aft	8
VIP Stateroom - Bow	9
Starboard Guest Stateroom	10
Companionway	10
Crew Quarters	11
Foredeck	12
Aft Deck	12
Lazarette	12
Flybridge	13
Engine Room/ Mechanical Equipment	14
Electrical System	15
Electronics	15
Safety Equipment	16
Deck and Hull	16

Tender	16
Exclusions	16
Exclusions	17
Disclaimer	17
PHOTOS	18
CONTACTS	37
Contact details	37
Telephones	37
Office hours	37
Address	37

SPECIFICATIONS

Overview

New to market! Late model Ferretti 630 updated and upgraded by knowledgeable owners since purchase.

Preliminary listing. Photos coming soon!

Basic Information

Category: Motor Yacht

Model Year: 2009

Year Built: 2009

Country: United States

Dimensions

LOA: 63' 0" (19.20m)

Beam: 18' 2" (5.54m)

Max Draft: 5' 3" (1.60m)

Speed, Capacities and Weight

Displacement: 93256 Pounds

Water Capacity: 262 Gallons

Holding Tank: 50 Gallons

Fuel Capacity: 1004 Gallons

Accommodations

Total Cabins: 4

Total Heads: 4

Hull and Deck Information

Hull Material: Fiberglass

Hull Configuration: Modified Deep Vee

Hull Finish: Plastic

Engine Information

Engines: 2

Manufacturer: MAN

Model: D2842LE443

Engine Type: Inboard

Fuel Type: Diesel

DETAILED INFORMATION

Highlights

- Accommodations for 6 in 3 staterooms plus separate crew - Master with queen bed and en suite bath; VIP with double bed and en suite bath, and Guest stateroom with lower twin beds and en suite bath.
- R.I.N.A Class A hull
- Open Flybridge with new Bimini top with 3-panel upper Helm enclosure - new September 2018
- Garmin electronics all new June 2015 including GPS, radar and VHF radios
- Mitsubishi Gyro stabilizers
- Batteries - new June 2018
- 23 kW Kohler generator
- Watermaker
- New compressors for A/C system - 2014
- A1 and A2 MAN engine maintenance services, September 2016. Engine hours as of November 2018: Port - 993 and Stbd - 992
- Cockpit cover - new October 2018

Wheelhouse/Dinette

- Carpeted sole
- Vinyl overhead with recessed lights
- Fold-down helm seat with footrest
- Opening side windows, port & stbd
- L-shaped Dinette stbd, with bench seating and 3 chairs
- Teak table mounted on twin pedestals
- 7 Steps up to Flybridge
- Door to side deck, to port of helm
- Stairs, center and forward of helm, lead below to accommodations

Navigation Equipment/Lower Helm:

- ZF electronic clutch/throttle controls
- Electrical distribution panel at helm; vessel schematic with indicator lights
- Schematic with indicator lights and switches for 5 pumps
- Fuel & water tank gauges on centerline
- Engine ignitions, start/stop buttons
- Garmin VHF radio
- Garmin autopilot
- 2 Garmin screens for chart plotter, closed circuit TV, radar & depth
- 2 MAN electronic engine display units, model MMDS-CLC6.3

- Side Power bow & stern thruster controls
- ITT Jabsco search light controls
- Generator start/stop controls
- Generator water temp & oil pressure gauges
- Generator hours meter
- Simrad IS15 depth display
- Quick chain counter
- Urania compass
- Barigo clock
- Barigo barometer
- Barigo thermometer-hygrometer
- Condaria A/C control panel
- Sea Fire engine shut down override panel with indicator lights and override switch
- Switches for battery parallel, windshield washer & wiper, gyro stabilizer, panel lights, windlass, horn, trim tabs, and blowers

Salon

- Sliding glass door entry from Aft Deck
- U-shaped sofa, port, with custom coffee table
- Isotherm wine cooler drawer in cabinetry, stbd aft
- Entertainment center with Sharp Aquos flat screen TV, Bose stereo system with five surround-sound double speakers
- DirecTV receiver
- Carpeted sole
- Vinyl overhead with teak accent panels
- Recessed overhead lights
- Windows with drop shades, port & stbd
- Indirect lighting at soffit
- Dining table and chairs, forward
- Staircase to Flybridge
- 6 Adult Type II PFDs
- A/C control

Galley

- Access from port aft Salon
- Pocket door to Salon
- Teak paneling, trim & molding
- Carpeted sole
- Opening window to Aft Deck

- Fixed window with mini-blinds
- Granite counter with recessed stainless steel sink
- Drawer aft for glassware
- Bosch 4-burner electric cooktop
- Bosch microwave
- Bosch refrigerator
- Miele dishwasher
- Isotherm wine cooler
- Small sofa opposite Galley
- A/C control panel
- Smoke alarm
- 3# Dry chemical fire extinguisher

Master Stateroom-Aft

- Queen size bed, spread, pillow shams and toss pillows
- Carpeted sole
- Teak cabinetry, trim and molding
- Vinyl overhead with recessed lighting
- Transducer and A/C manifold under bed
- Built-in night stands
- Reading light on each side of bed
- A/C controls
- 2 Portholes and 3 lights in alcove, port and stbd
- Curtains
- Mirror on aft bulkhead
- Built-in desk with stool, stbd
- Built-in sofa with heat/vibrator
- A/C air handler under sofa
- Custom built-in 4-drawer cabinetry stbd, with power amplifier and DirecTV box underneath
- Hanging locker forward, with carpeted sole, full-length mirror on door panel, overhead light and safe
- Sharp TV
- 110V outlets
- Smoke alarm
- Carbon monoxide alarm
- Condensation sump under sole, centerline
- 3# Dry chemical fire extinguisher

Master Stateroom En Suite Head:

- Entry stateroom aft
- Teak laminate sole

- Composite overhead with 3 lights
- Exhaust fan
- Porthole with curtains in alcove
- Corian vanity with raised porcelain sink
- Custom single lever hot/cold water faucet
- Tecma head and control panel
- Bidet
- Shower stall with Plexiglas doors, hand-held shower head on hose with adjustable wall mount, faucet, light and composite sole

VIP Stateroom - Bow

- Island berth with spread, pillow shams, accent pillows, and storage drawers
- Carpeted sole
- Teak paneling, trim and molding
- Vinyl overhead with recessed lighting, hatch with black-out shade
- Porthole with curtains, port & stbd in alcove
- Upholstered mirrored forward bulkhead
- Soffit-mounted indirect lights, port & stbd
- Storage shelf and lockers, port and stbd, forward and aft
- Hanging locker, port, with shelves and light
- Sharp TV
- DirecTV control box
- Bose speakers and sound system
- A/C controls
- 110V outlets
- Smoke alarm
- 3# Dry chemical fire extinguisher

Under Bow Stateroom Sole:

- Electric bow thruster
- Polyethylene freshwater tank, aft
- Bow thruster oil head tank

VIP Stateroom En Suite Head:

- Private entry from stateroom
- Laminate non-skid sole
- Vinyl overhead with 3 lights
- Porthole with curtains in alcove
- Corian vanity with raised porcelain sink
- Custom single lever hot/cold water faucet

- Towel bar
- 110V GFI outlet
- Beveled mirror on inboard bulkhead
- Tecma head and control panel
- Bidet
- Molded shower stall with Plexiglas door, hand-held shower head on hose with adjustable wall mount, faucet

Starboard Guest Stateroom

- Twin lower beds with spreads, pillow shams & toss pillows
- Carpeted sole
- Vinyl overhead with recessed lighting
- Fabric walls
- Reading light at head of each bed
- 2 Portholes in alcove with curtains
- Hanging locker with shelf and light
- Sharp TV
- Panasonic stereo
- A/C controls
- Smoke alarm
- 3# Dry chemical fire extinguisher
- Air handler under outboard bed
- Access to freshwater and holding tanks under inboard bed, forward

Starboard Guest Head:

- Entry from stateroom and companionway
- Laminate sole
- Vinyl overhead with 2 lights
- Porthole with curtains in alcove
- Corian vanity with raised porcelain sink
- Custom single lever hot/cold water faucet
- Tecma electric head and control panel
Mirror on forward bulkhead
Shower stall with bi-fold Plexiglas door, hand-held shower head on hose with adjustable wall mount, faucet, and overhead light

Companionway

- Carpeted sole
- A/C air handler in port locker
- GE freezer, aft
- Smoke alarm

- Vinyl overhead with overhead lights
- 5 Carpeted steps to Wheelhouse
- Access to Bow, Aft and Starboard staterooms
- 2 Steps to Aft Stateroom

Below Companionway:

- 2 x 330 litre freshwater tanks
- Polyethylene holding tank, aft

Crew Quarters

Crew Quarters Companionway:

- 7-Step curved stairwell
- Miele clothes washer and dryer
- Carpeted sole
- Vinyl overhead
- Porthole
- Fuel emergency shut-offs
- 4 Battery cut-off switches and parallel switch
- Port & stbd vent flaps pulls
- Orion flare kit

Crew Quarters:

- Entry from Aft Deck, 2 steps down
- Single berth
- Carpet over fiberglass sole with snap-down
- Vinyl overhead with smoke alarm
- 2 Recessed overhead lights
- Reading light
- A/C control
- Porthole with curtains
- Hanging locker with full-length mirror, light and shower sump
- TV
- Panasonic stereo with 2 stereo speakers
- 110V outlets
- Carbon monoxide alarm
- 3# Dry chemical fire extinguisher

Crew Head:

- Teak grate sole
- Porthole with curtains

- Molded counter with recessed sink and single-lever faucet
- Mirrored medicine locker with shelf
- Tecma head and control panel
- Hand-held shower
- Shower curtain on overhead track

Foredeck

- Fiberglass non-skid deck
- Recessed sunpad lounge with cushions
- Hatch, centerline, forward of sunpad lounge
- Anchor rode locker access hatches, port & stbd
- Anchor rode locker with boat fenders, deck washdown spigot
- 2 Stainless steel bow cleats
- Stainless steel anchor chute with 3 rollers
- 32 kg Trefoil anchor

Aft Deck

- Sliding door to Salon
- Opening window to Salon, port
- 7-Step teak & stainless steel ladder to bridge
- 5 Overhead lights
- Closed circuit TV camera
- Starboard side cabinet with sink, hot/cold freshwater and saltwater faucets
- Switch for passarelle, stbd in overhead
- Storage locker, stbd
- Cockpit control station in stbd locker with start/stop switches, ZF engine controls and bow & stern thruster controls
- Stern cleats, in lockers, port & stbd with Quick warping winches, with in/out switches
- Teak over fiberglass deck
- Access to Engine Room
- Door, stbd, leads down to the crew quarters
- 2 Teak pedestal tables with leaf
- Bench seating, port & stbd aft, with cushions and storage
- 2 Teak-covered steps, between bench seats, to passarelle

Lazarette

- Access under swim platform
- Access to port & stbd struts

- 24V bilge pump
- Twin piston hydraulic cylinders for the access hatch
- Port & stbd rudders with stainless steel linkage arm
- Dual piston hydraulic steering cylinder
- Lockers: port, stbd, and centerline
- Port & stbd main engine exhaust silencers

Flybridge

- New Flybridge Bimini top with 3-panel upper Helm enclosure, new September 2018
- Fiberglass non-skid deck with drains, aft
- Port aft access hatch/companionway to Aft Deck with stainless steel handrail
- Starboard forward access hatch/companionway to Salon
- Sun lounge forward
- Custom wet bar cabinet with Isotherm refrigerator
- Sink with hot/cold water faucet
- 2-Burner Gaggenau grill
- ACR E.P.I.R.B.
- Searchlight, centerline, forward of windscreen with ITT Jabsco controls
- Tinted windscreen with stainless steel handrails
- U-shaped bench seat, stbd aft, with cushions and storage
- Pedestal table
- Helm bench seat with storage

Helm Navigation Equipment:

- Electrically-raised instrument panel
- ZF electric engine controls
- Aluminum steering wheel
- Engine start/stop switch
- Bow & stern thruster controls
- Horn, windlass, trim tabs, console and DC outlet switches
- Engine water temp gauges
- Tachometer
- Simrad ISI5 depth/speed display
- Garmin VHF radio
- VDO rudder angle indicator
- Engine and transmission alarm indicator lights and audible alarms
- Garmin autopilot
- Garmin display
- Interphase forward-looking sonar
- 2 x 6-person Eurovinil life rafts

Radar Arch:

- 2 VHF antennas
- Garmin radar scanner
- Single trumpet horn
- Forward navigation light
- Anchor light
- Port & stbd navigation lights
- Stern light
- 2 Garmin GPS antennas
- Manual searchlight
- TV antenna

Engine Room/ Mechanical Equipment

- - Twin 1224 hp MAN 12-cylinder diesel engines, 2008, model number: D2842LE443
 - Engine hours as of November 2018: Port (approx): 993 Stbd (approx): 992
 - ZF reduction gears, model 665V, 2.517:1 ratio
 - 5-Bladed propellers
 - Stainless steel propeller shafts
 - Spade-shaped bronze rudder
 - Hydraulic steering
 - 24V engine alternator, port & stbd
 - ZF electronic controls
 - Dripless seals
 - Idromar reverse osmosis watermaker
 - Bilge pumps: 2 electric/automatic with float switches, aft; 2 suctions for remote-mounted bilge pumps
 - High water alarm which activate upper float switch
 - Diverters off each raw water intake for emergency bilge pumping
 - Freshwater pressure system, 24VDC and 220 VAC
 - 24V DC freshwater pump
 - Side Power electric bow and stern thrusters
 - Trim tabs
 - Racor filters, primary; Canister filters, secondary
 - Mitsubishi Gyro stabilizers
 - Besonzoni hydraulic/electric passarelle
 - Davit/hoist at end of passarelle
 - Hydraulic pumps and reservoir for passarelle & trim tabs, port
 - Ventilation ducts with fire flaps
 - Engine room fan
 - 24V DC circuit panel
 - Shore power main inlet breaker
 - DC overhead lighting
 - Ariston 13.2-gallon electric water heater

- Bentel security alarm system
- Black water holding tank macerator pump
- Electronic control box to engines, port & stbd
- Fiberglass 3800-litre fuel tank, forward
- Smoke alarm system with control panel
- Cablemaster shore power system
- Shore power transformer
- Bilge manifold to 7 compartments
- Saltwater wash down pump, with accumulator tank
- 2 Condaria chilled-water air conditioning compressors, total 72,000 BTUs
- Chilled water circulating pump
- 220V air conditioning raw water cooling pump

Electrical System

- 23 kW Kohler generator, model 23E0ZD, 4-cylinder, 120/240V, 60 Hz
- Approx 1727 hours as of November, 2018
- Racor filter
- Mastervolt 24V/75 amp battery charger
- Mastervolt 24/1500 watt inverter
- Battery isolator
- 24V DC and 110V AC lighting
- 6 x 12V 8D batteries, stbd in engine room, in covered battery box
- 1 x 12V 8D battery, stbd in engine room, for generator
- 4 x 12V 8D batteries to engines, stbd in engine room
- All batteries new June 2018
- 100-amp shore power Cablemaster

Electronics

- Garmin radar
- 2 Garmin VHF radios
- 3 Garmin GPS units
- Garmin autopilot
- Nobeltec plotter
- Garmin depthsounder with Simrad display
- Urania magnetic compass
- ITT Jabsco remote operated searchlight
- DirecTV SAT/TV receivers
- Panasonic stereo
- Sharp televisions
- Bose home entertainment theater

Safety Equipment

- Portable fire extinguishers
- FM200 cylinder, 19.68 kg, built-in fire fighting system
- 2 Eurovinil 6-person life rafts
- 13 Type II adult PFDs
- Electric horn
- Orion flares
- ACR E.P.I.R.B. with hydrostatic release
- First-Aid kit

Deck and Hull

- 32 kg Trefoil anchor with approx 328' x 12mm chain
- Quick electric windlass
- Stainless steel spring cleats, port & stbd
- Breakaway hand rail, port & stbd
- Stainless steel hand rails with stainless steel stanchions and braided stainless steel life line
- Molded fiberglass non-skid deck
- Fiberglass swim platform with hydraulically actuated swim ladder
- Hydraulic articulating and rotating passarelle with tender winch
- Lazarette hatch
- Stainless steel transom gate, stbd
- Showerhead with hot/cold water faucet
- Marinc TV/phone connector
- Dockside water connection
- Electric eye for passarelle
- Locker, portside, for PFDs
- Cockpit cover, new October 2018

Tender

- 12' 6" AB Hard bottom inflatable, new tubes 2016, with 40 hp Yamaha 4-stroke outboard engine

Exclusions

Owner's personal items.

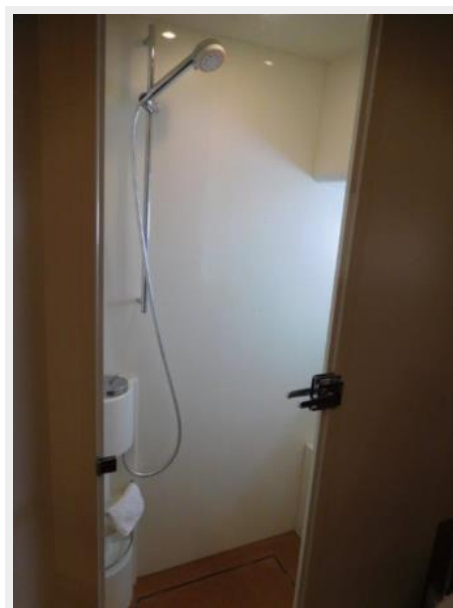
Exclusions

Owner's personal belongings.

Disclaimer

The Company offers the details of this vessel or yacht in good faith but cannot guarantee or warrant the accuracy of this information nor warrant the condition of the vessel. A buyer should instruct his representatives, agents, or his surveyors, to investigate such details as the buyer desires validated. This vessel or yacht is offered subject to prior sale, price change, or withdrawal without notice.

PHOTOS





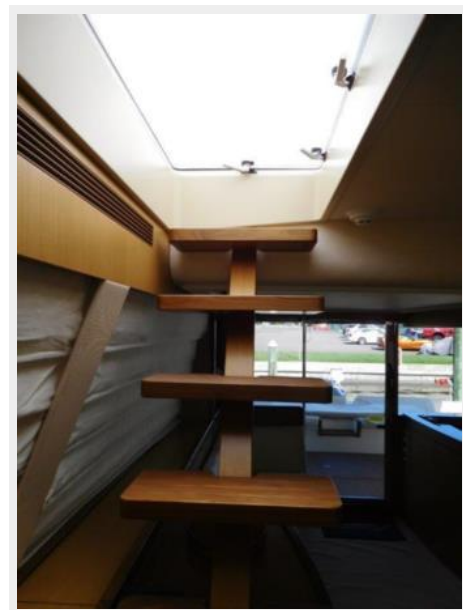








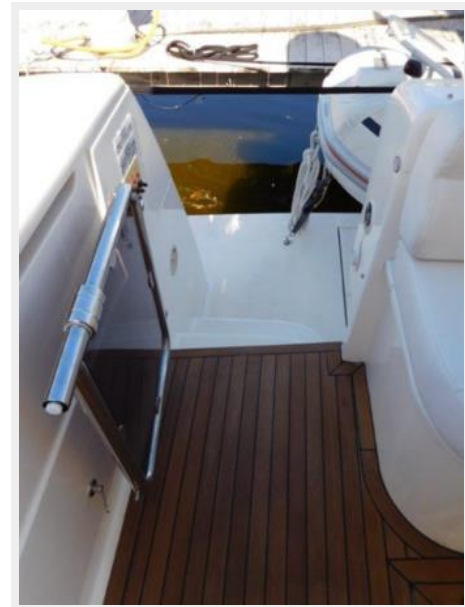
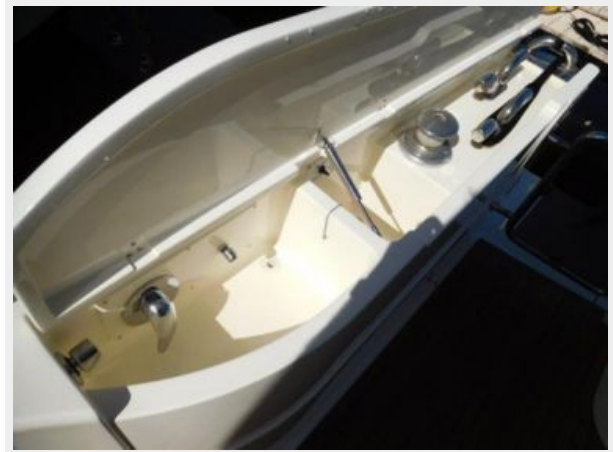


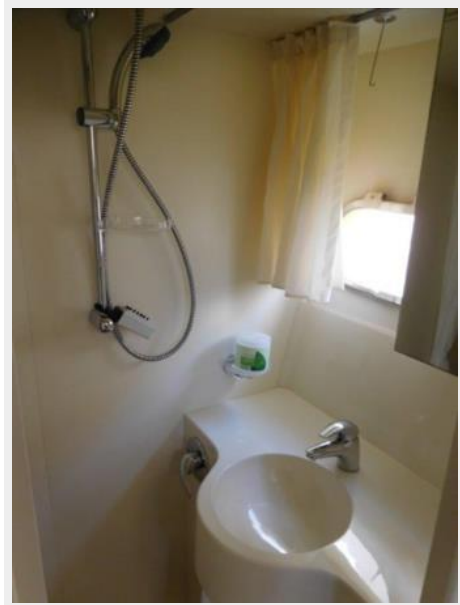


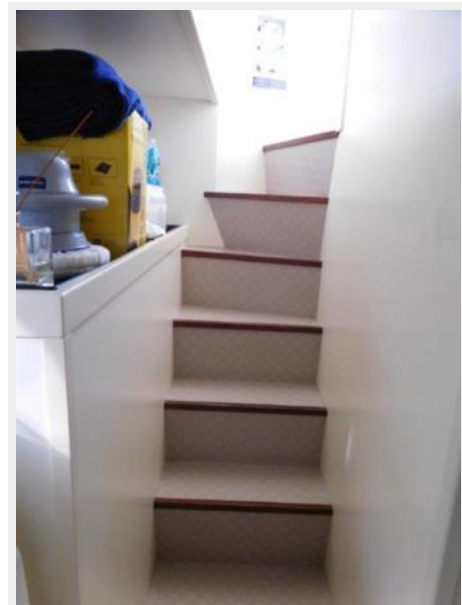






















CONTACTS

Andrey Shestakov, leading yacht broker of the sales department of Shestakov Yacht Sales Inc. Shestakov Yacht Sales Inc., the official representative of the Miami/Fort Lauderdale FL headquarters.

Contact details

Email: andrey@shestakovyachtsales.com

Web: shestakovyachtsales.com/en/

Telephones

USA: +1(954)274-4435

Office hours

Monday – Saturday: **9:00 - 21:00** EDT

Sunday: **closed**

Address



Harbour Towne Marina, 850 NE 3rd St,
STE 213, Dania, FL 33004