

ACE OF DIAMONDS — HATTERAS



Судостроитель: HATTERAS

Год постройки: 2010

Модель: Катер для спортивной рыбалки

Цена: **ЦЕНА ЯХТЫ ПО ЗАПРОСУ**

Местонахождение: United States

Длина общая: 77' 0" (23.47m)

Ширина: 22' 0" (6.71m)

Макс. осадка: 5' 3" (1.60m)

Крейс. скорость: 25 Kts. (29 MPH)

Макс. скорость: 32 Kts. (37 MPH)

Купить **ACE OF DIAMONDS — HATTERAS** а также выбрать подходящую вам яхту из нашего каталога яхт вам поможет опытный яхтенный брокер Андрей Шестаков. На сегодняшний день компания **Shestakov Yacht Sales Inc.** имеет большое количество яхт в собственном списке продаж, а также тесно сотрудничает со всеми крупными яхтенными производителями по всему миру.

Для того чтобы купить яхту **ACE OF DIAMONDS — HATTERAS** а также проконсультироваться по любому вопросу связанному с покупкой, продажей, чартером яхт позвоните по телефону **+7(918)465-66-44**.

ОГЛАВЛЕНИЕ

ОГЛАВЛЕНИЕ	2
ХАРАКТЕРИСТИКИ	3
Обзор	3
Основная информация	3
Размеры	3
Скорость, вместимость и масса	3
Размещение	4
Корпус и палуба	4
Информация о двигателе	4
ПОДРОБНОЕ ОПИСАНИЕ	5
Full Specifications	5
Listing Title	11
Исключения	11
Отказ от ответственности	11
ФОТОГРАФИИ	12
КОНТАКТЫ	24
Контактная информация	24
Телефоны	24
Время работы	24
Адрес	24

ХАРАКТЕРИСТИКИ

Обзор

ACE OF DIAMONDS is the newest 77 Hatteras on the market today built in 2010 and has always been a non-fished yacht with all owners. There was a \$400,000 refit done in 2018. She has numerous Hatteras custom changes, including:

- Custom interior layout with a forward stateroom that can accommodate crew
- Custom oversized port lights
- An original crews quarters that has been re-designed into an engineer's pump room
- \$400,000 worth of upgrades including a completely new interior, and all maintenance up to date
- See through live well

Основная информация

Тип судна: Катер для спортивной рыбалки

Модельный год: 2010

Год постройки: 2010

Страна: United States

Размеры

Длина общая: 77' 0" (23.47m)

Длина по ватерлинии: 66' 0" (20.12m)

Ширина: 22' 0" (6.71m)

Макс. осадка: 5' 3" (1.60m)

Скорость, вместимость и масса

Крейс. скорость: 25 Kts. (29 MPH)

Макс. скорость: 32 Kts. (37 MPH)

Водоизмещение: 175000 Pounds

Вместимость воды: 380 Gallons

Объем топливного бака: 3000 Gallons

Размещение

Всего кают: 5

Всего коек: 5

Всего ком. состава: 5

Корпус и палуба

Материал корпуса: Fiberglass

Комплектация корпуса: Semi-Displacement

Информация о двигателе

Двигатели: 2

Производитель: MTU

Модель: 16V 2000 M93

Тип двигателя: Inboard

Тип топлива: Diesel

ПОДРОБНОЕ ОПИСАНИЕ

Full Specifications

WALKTHROUGH SALON & GALLEY Entering the main salon from the mezzanine area you notice the high gloss cherry décor found throughout the yacht with teak & holly floors that continue through the salon & galley area. Immediately to port, you have a day head to complete with sink & toilet. Just forward of the day head are the curved staircases leading to the upper sky lounge. To starboard, you have an U-shaped settee finished in baby ostrich with a new custom teak table.. Opposite of the settee and underneath the custom marble counter & bar area is a massive flush mounted 65" flat screen TV and two refrigerator drawers. The open galley has beautiful marble counters & backsplash, two bar stools, and all the amenities you would expect in a first-class chef's galley such as convection oven, refrigerator & freezer drawers, microwave, sink, trash compactor, and plenty of pantry space. Forward to starboard, you have the dining area that comfortably seats 6 with yet another large flat screen TV mounted on the bulkhead. **GUEST ACCOMMODATIONS** Moving forward of the salon you have a centerline companionway that leads down into the guest accommodations. To starboard, you have the entrance to the full beam master cabin ensuite. What's impressive about this cabin is not only the sheer volume, but you have direct access to the engine room through a hidden sound insulated water-tight bulkhead door. Continuing forward towards the bow you have the spacious VIP ensuite cabin to port complete with hanging lockers & drawer storage. Opposite to starboard you have the smallest cabin featuring a single berth complete with hanging locker & drawer storage. This would cabin would also serve as the captain's cabin if you didn't want to be an owner-operator. All the way forward you have a split cabin layout that features two separate single cabins that are joined by a shared head complete with shower, sink, and large shower. This bathroom would also be shared by the smaller third cabin mentioned above. This 5-cabin layout comfortably sleeps 7 guests. This is layout would work great for a family with multiple children. We also have plans to convert the forward two cabins into the more common center line VIP queen cabin. Multiple quotes have been provided for this conversion ranging from \$90,000-125,000 including a quote from Hatteras themselves. **SKYLounge** Walking up the curved staircase from the salon you enter the upper skylounge. This space is utilized nicely. You have a raised U-shaped settee to the aft starboard area. Opposite of the desk area you have built in cabinets with refrigerator drawers and above that a hanging flat screen TV that can swivel. All the way forward you have the helm area complete with centerline captain's chair. The helm itself is extremely impressive with 7 flat screen monitors and plenty of visibility. The exterior of the sky lounge has a nice sitting area and wing stations to both port & starboard with the starboard station featuring GPS, fish finder, autopilot & radio as well as bow & stern thruster which is found at all 4 control stations. There are custom side and aft windows that are retractable and overhead hatches **COCKPIT** The cockpit is just under 200 square feet and features a teak sole, spacious mezzanine, fighting chair, tuna door, ice shipper, plenty of refrigerator & freezer space as well as a full helm station located to port. It has a see-through live well and custom mezzanine seating. You also have a hanging flat screen TV to port just over the helm station. **BOW** The bow has a davit and centerline chocks. To give you an idea of the size of tender that the boat is capable of

carrying, **ENGINE ROOM**

Engine room access is either from the master stateroom through a custom sound proof door as well as the cockpit.

Featuring twin MTU 2,400hp engines with just under 1,100 original hours (10/13/2018) and twin 27kw Onan generators. Unique is that ACE OF DIAMONDS is stabilized with 9 sq/ft fins making her the only stabilized 77 Hatteras on the market.

HULL AND DECK HULL CONSTRUCTION •Solid fiberglass hull bottom from waterline down, resin-infused, exterior gelcoat with blister resistant vinylester resin •Hull sides cored of PVC foam, resin-infused •Polyester/polyurethane exterior paint with custom yellow hull sides, white topsides, and Jade green boot stripe •Copper-based antifouling paint on hull bottom •Fiberglass stringers with steel laminated at engine mounting points •Engine room bulkheads of resin-infused composite construction, PVC cored, fiberglass laminate **DECK AND**

SUPERSTRUCTURE CONSTRUCTION •Deck and superstructure of resin infused fiberglass, PVC foam core •Nonskid surface on deck •White polyurethane paint finish •Integral fiberglass bow pulpit, integrated stainless-steel anchor roller **DECK EQUIPMENT AND HARDWARE**

•Brower Systems WC1600 Hydraulic davit mounted on foredeck (new 2012), stainless steel cradle for dinghy •Maxwell 2500lb windlass, deck mounted foot switches, remote at helm. 132lb (60kg) stainless steel Ultra plow style anchor with chain •Radar mast on Bridge roof with handrails •Rupp Tournament 4850 •quad spreaders, Deluxe Hydrorigger multi-action power riggers with hydro locks •Switlik MD3 6-person life raft in canister, deck mounted on stainless steel cradle (Recertified 2018) •Stainless steel mooring cleats (8) **COCKPIT** •The cockpit of the Hatteras 77 is an angler's dream. She offers 192 sq/ft of working space with built in fish boxes, live wells, and ample storage. There is mezzanine style seating for those wishing to view the day's activities. •192 Square foot working space with an additional 25 square feet of mezzanine seating space •Custom teak cockpit sole installed in 2012 •(2) 65" fish boxes with macerators, hatches flush in deck, with gas hinges •Storage in steps to deckhouse with chill box in top step •(3) 20-gallon storage tubs, lower level mezzanine •Cockpit transom fish box with recirculating see-through live well •Sea water and fresh water wash-down outlets with quick connects •Aluminum mounting plate for fighting chair •Shore water connection with pressure reducing valves and quick connects, Port and Starboard •Seating with cushions across upper mezzanine, hinged for access to mechanical compartment •Port side vertical storage with MTU controls, start/stop buttons, thruster control •Rupp rod holders, stainless steel flush mount rod holders (4) •Transom door with lifting combing gate •Fiberglass cockpit boarding step box with storage •Pneumatic sliding door to salon •DC overhead light integrated into flybridge overhang •Cockpit combing lights •Powder coated grab rails on cabin sides

•New teak covering boards **ENCLOSED BRIDGE** The enclosed bridge is well thought out and is an ideal combination of helm area and sky lounge. Forward, there is a centerline helm seat with a complete set of engine controls and the latest in navigational electronics. To both port and starboard are forward facing double guest riding seats. The starboard aft section of the lounge area features a raised L-shaped settee for additional guest seating and navigational desk forward. Across to port is a dry bar with cabinet storage and stairwell access to the lower level.

The pneumatic door aft leads to a mezzanine style deck with aft facing guest seating and wing helm stations both port and starboard. **HELM FEATURES** •Centerline Pompanette helm seat, pedestal style, adjustable

•\$400,000 refit in 2018 (including new interior)

•Forward facing port and starboard riding seats, leather upholstery, drawer storage underneath (Recovered 2017) •Cherry cabinetry with raised panel doors and high gloss finish •Frameless windows with three-piece windshield all of safety glass •Washer/wipers, intermittent with controls, windshield defogger •Electronic engine controls, single lever throttles, engine synchronizer, electric trolling valve controls, emergency backup, Hydraulic steering (Power assisted) •Custom navigational instrumentation package, Marine Communications (VHF, SSB, Weather) •American Bow Thruster controls (Bow & Stern), Windlass Controls (Hydraulic - Port Engine) •RTI electronics and entertainment system controller **SKYLounge FEATURES** •Fully Enclosed bridge with electric window aft, Port and Starboard electric windows, Pneumatic sliding door, overhead hatches, and stainless overhead handrails •U-shaped settee to starboard with built-in storage •Built-in Navigators desk forward •Dry bar to port with stone countertop and built-in Uline drawer style refrigeration •Cherry cabinetry with high gloss finish •Sony flat screen HDTV •Carpeting (new), padded headliner, wood valances •Smoke Detector, CO2 Detectors •Air-conditioned •AC and DC lighting **BRIDGE DECK FEATURES** •Port and Starboard wing stations, pod-style controls with start/stop switches, electronic throttle controls, thruster controls, Hydraulic steering, and tachometers, covers •Aft facing seating with cushions •Polished anodized aluminum rails and stanchions with (11) integrated rod holders **INSTRUMENTATION** •All updates are current and antennas are new

•KEP Marine Pilot Series LCD 19" Display (7), additional outside master stateroom (1), additional at Starboard bridge deck wing helm •Raymarine GPM400 Processor Module (4) •Raymarine GSeries Command Center Keyboard with Wireless upgrade •Northstar 6.4" Overhead display •Garmin 3205 GPS Map •Simrad WR20 Remote Command System •Raymarine 12Kw Super HD digital radar 6" Open Array •Raymarine 4kw Super HDdigital radar 4" Open array •Raymarine DSM400 3kw digital Sounder module •Raymarine DSM300 Digital Transducer •Raymarine R299 hull transducer •Furuno RD30 Depth (4) •Furuno LH 3010 Intercom Speakers (4) •Simrad AP28 Autopilot •Maple Systems/Weintek HMI Programmer •Raystar 125 GPS sensor •Raymarine SeaTalk Backbone kit with wireless base station •Carlisle & Finch Searchlight and Night Vision (3) •Sirius SR100 Weather •Ultrasonic Weather Station •Raymarine AIS250 Receiver Module •ICom M604 VHF transceiver (3) •Raymarine Command Mic III (3) •ICom M802 single sideband radio •Dyna Plate for SSB •CB Radio •Newmar Hailer, 30 Watt (2) •Comrod AV/2 VHF 23' Antenna (3) •Digital 4' cell antenna (2) •CB Antenna •Cell Repeater •Panasonic Phone system with phones (8) •KVH M7 TracVision •KVH 252 TracPhone System •Newmar Horns (2) •Newmar Power Converter •Waterproof Cameras (2) •Raymarine Cameras (9) •Quad Switcher for docking Cameras •Paradox Marine Magellan wireless security system •BarnaClean electronic Antifouling system •Murphy Electronic Engine Display Monitor •RTI Entertainment control system throughout boat with controls for electric blinds

ENTERTAINMENT EQUIPMENT •The entertainment control system on this boat has been updated to latest in marine A/V automation from RTI systems. The centralized system is

accessible from anywhere in the boat via remote and includes remote control access to the window blinds. •RTI Entertainment controller system throughout entire boat including controls for window shades •RTI Remote controls in salon, flybridge, and each of the staterooms •Nuvo NV72 SiR AM/FM tuner, Sirius ready •Zektor Audio Matrix switch •Furman linear power controller •Niles multi-room power amplifier •Marantz network home theater A/V receiver •Marantz universal disc player with networking •KVF M7 TracVision satellite dome (No receivers) •Samsung 65" LCD HDTV main salon •Sony 42" LCD TV dining area •Sony 42" LCD TV flybridge •Samsung 65" LCD HDTV Master Stateroom •Sony 42" LCD TV VIP Stateroom •20" LCD TV in each of the single cabins •32" LCD TV in cockpit **MAIN SALON** The main salon of the Hatteras 77 is open and inviting. There is space for all aboard to enjoy the ride while running out to your favorite spot or just to relax in the air-conditioned salon after making the big catch. •Pneumatic sliding door from cockpit •Real Leather sofa and loveseat with rod storage underneath (Recovered 2017) •Cherry woodwork and cabinetry with high gloss finish •Day head to port of cockpit door with electric, freshwater flush toilet, vanity with sink •Amtico vinyl strip flooring •Samsung 65" LCD HDTV with RTI controls and surround sound system •Fluted wood valances with silhouette blinds, (RTI controlled) •Fixed frameless windows with safety glass •Custom coffee table •Custom Padded headliner •Air-conditioned with SMX Controller •AC and DC lighting •AC dimmable lighting •DC lighting **GALLEY AND DINETTE** The Galley and dinette located in the forward most section of the main salon. The Galley is to port and features a large wrap around countertop with plenty of surface area for food preparation and serving. There is plenty of cabinet and storage throughout both below and above the countertops. The appliances are all top of the line with stainless steel finishes. Across to starboard is the galley dinette area with seating enough for 6 adults comfortably. The dinette table is of wood to compliment the galley countertops. There is drawer storage underneath each of the seats. forward of the dinette is a walk-in pantry with plenty of storage for dry and paper goods. **GALLEY FEATURES** •KitchenAid 4 burner ceramic cooktop •Whirlpool stainless steel oven with outside venting •SubZero under counter refrigerator/freezers (3) •Granite countertops with matching backsplashes •Center island with bar top counter and two bar stools •Large stainless steel single basin sink under counter mounted •Cherry cabinetry with raised panels and high gloss finish •Amtico Vinyl strip flooring with teak and holly style finish **DINETTE FEATURES**

•All updates were completed in 2018 •Seating for 6 adults, with leather upholstery •Wood dining table - New 2017 •Drawer storage under seating •Cherry woodwork with high gloss finish •Amtico Vinyl strip flooring with teak and holly style finish **MASTER STATEROOM** The master stateroom is located midship and is carried across the full beam of the vessel. For maximum comfort, there is a centerline king sized berth with full walk around access. The cabinetry is made of cherry with a high gloss finish and with ample storage throughout. Other features include a walk-in closet, sectional sofa, ensuite head, and entertainment system. **MASTER STATEROOM FEATURES** •King sized centerline berth with upholstered headboard and drawer storage underneath •Hanging lockers, cedar lined •Built-in dresser with drawer storage •Nightstands with built-in with drawer storage (2) •Loveseat sofa seating •55" Samsung LCD HDTV and entertainment system •Air Conditioning controls •AC and DC Lighting, dimmer switches, low voltage courtesy lighting •New carpeting •Venting port windows both port and starboard (2 each side + home intercom system) **ENSUITE BATH** •Stone countertop and backsplash •Porcelain

single basin sink, under counter mounted •Headhunter freshwater flush electric toilet •Amtico vinyl strip flooring •Cherry cabinetry under counters, overhead cabinetry with mirrored doors •Separate stall shower with single glass door, molded in seat, tile flooring, and automatic sump pump •Venting port window

•Mirrored heads

•Towel holders

•AC and DC lighting •Holding tank indicator light at 3/4 full

LAUNDRY ROOM There is a laundry room located at the entrance to the master stateroom. Inside you will find a Whirlpool Duet series full-size stackable washer and dryer. There is built-in drawer storage and hanging bar. **VIP STATEROOM** The VIP Stateroom is located forward of the master on the port side of the vessel. This is a nicely appointed guestroom. It features a walk around queen sized berth, hanging locker, built in dresser, and ensuite head. **VIP STATEROOM FEATURES** •Queen sized walk around berth with upholstered headboard and drawer storage underneath •Hanging locker, cedar lined •Built-in dresser with drawer storage •Nightstands with built-in with drawer storage •Sony LCD HDTV and entertainment system •Air Conditioning controls •AC and DC Lighting, dimmer switches, low voltage courtesy lighting •Venting port window •New carpeting

•Phone intercom system **ENSUITE BATH** •Stone countertop and backsplash •Porcelain single basin sink, under counter mounted •Headhunter freshwater flush electric toilet •Amtico vinyl strip flooring •Cherry cabinetry under counters, overhead cabinetry with mirrored doors •Separate stall shower with single glass door, molded in seat, tile flooring, and automatic sump pump •Towel holders •AC and DC lighting •Holding tank indicator light at 3/4 full

•Mirrored heads There are three additional guest staterooms on board. In the most forward section there are two identical single cabins both port and starboard. There is a third single cabin located just aft to starboard. The single guest cabins share a separate head.

SINGLE GUEST STATEROOMS STARBOARD STATEROOM FEATURES The Starboard VIP Stateroom is a custom over-sized stateroom and head.

•Single berths with drawer storage underneath •Overhead storage cabinets •Hanging Locker, cedar lined •Nightstand with drawer storage •AC and DC lighting, Dimming switches •Entertainment system with TV •Air conditioning •New carpeting **BOW STATEROOM FEATURES (ONE OF TWO)** •Single berths with drawer storage underneath •Overhead storage cabinets •AC and DC lighting, Dimming switches •Air conditioning •New carpeting

•TV on phone intercom system

BOW STATEROOM (TWO OF TWO) •Single berths with drawer storage underneath •Overhead storage cabinets •AC and DC lighting, Dimming switches •Air conditioning •New carpeting

•TV on phone intercom system

GUEST HEAD •Stone countertop and backsplash with single basin sink •Headhunter freshwater flush electric toilet •Amtico vinyl strip flooring •Cherry cabinetry under counters, overhead cabinetry with mirrored doors •Separate stall shower with automatic sump pump •Holding tank indicator light at 3/4 full

•Mirrored ceiling **MECHANICAL EQUIPMENT** The Mechanical room is located under the salon and can be accessed through the hatch in the cockpit or through the workroom via the master stateroom. The space is painted with white polyurethane throughout and is heavily insulated for sound and vibration. All areas of the space are easily accessible. Forward of the mechanical room is an additional workroom with breaker panels, battery switches, air conditioning chillers, and toolbox. The door between the workroom and master stateroom is heavily insulated to ensure the owner is undisturbed. •Twin MTU 16V2000 diesel, freshwater-cooled main engines with 2400hp each. Electronically controlled marine gears, neutral interlocks, exhaust silencers, hour meters, duplex fuel filters with water separators and bypass manifolds, and sea strainers •Electric fuel priming pumps for main engines •Monitoring consoles for main engines with gauges and start/stop switches •High strength Alloy 22, 4inch propeller shafts •Dripless shaft seals with spares •Manganese Bronze struts •NiBrAl 6blade high-performance propellers •Heavy Duty engine couplings •Stainless steel rudders •Dripless rudder seals •Stainless steel steering tie bar (1 inch) with pivoting, self-aligning ball joints at all cylinder and tie bar connections •Stainless steel trim tabs •(2) Onan 27.5kw Generators with shock mounts, sound enclosures, fuel filters, water separators, and sea strainers •Pressure and temperature forced air induction system for engine combustion air, fans ducted from cockpit (Single fan reversible for flow-through ventilation) •110volt AC reversible oil changing system for engines, gearboxes, and generators with Hatteras quick connections •Keypower hydraulic stabilizers with 9ft/sq fins Installed 2012 •Bow thruster back up pump for redundancy •DC Exhaust Blower •FM200 fixed fire extinguisher system for engine room, automatic and manual controls, audible and visual discharge signals •Portable DryChem fire extinguishers, UL approved •Electric fuel transfer system with (3) pumps for backup capability, filtration, and dry tank protection •Pressurized water manifold with centralized shutoff valves for sinks and showers •230volt AC fresh water pump •50-gallon electric water heater, 230volt with winterizing bypass valves •FCI Watermaker •Dometic Ice King Icemaker •Freshwater fill hoses for Mains and generators •Seawater pressure system with AC pump •Pickup Sea Chests with isolated discharges •24volt DC bilge and sump pumps. (7) 3700gph, (2) 2000gph •Auxiliary emergency bilge pumps. 300gpm •AC compresses air system with airline and regulator •Air Conditioning compressors and pumps •Bronze ball valves, chrome plated. through bolted in solid fiberglass on all underwater through hull fittings, electrically bonded •Rubber deck mat between engines •Insulation in deck •Welded and polishes stainless steel handrails •Polyurethane paint in engine room and bilges •UL Listed fiberglass fuel tanks. Constructed of fire-resistant fiberglass resin, bronze fittings, coated with fire retardant paint •USCG type A1 UL Marine listed fuel lines •Fiberglass water tanks, bronze fittings. Polyethylene water lines •Fiberglass holding tanks with bronze fittings, 24volt DC sewage pump, plumbed for dockside pump out, 3/4 full display and alarm as part of systems monitor •AC fluorescent lighting •DC lighting **ELECTRICAL** •(2) 27.5kw Onan generators , shock mounts, sound enclosures, and fuel (1,352 10/18/2018) and water separators •(2) banks, 24volt, heavy duty 12volt marine batteries mounted in fire retardant fiberglass boxes •Gel/lead acid compatible 240volt

automatic/programmable battery charger 50/60hz •(2) 240volt, 100amp transformer connected retractable shore power cords with overcurrent protection and wireless remote for cockpit •Automatic battery paralleling system with switch at control console •AC switching panel with voltage source selector switches, voltmeter, ammeter, frequency meters, twin generator start/stop controls, interlock selector breakers and voltage boost switches •DC electronics panel with magnetic circuit breakers (flybridge) and AC and DC distribution panels with magnetic circuit breakers •Ground fault protected AC receptacles and lighting circuits •AC and DC light fixtures •AC Dimmable lighting •AC duplex outlets with ground fault protection •Battery control panels with fuses and isolation switches •Chilled water air conditioning with revers cycle heat, A/C compressors and individual SMX controls •Paradox Marine Magellan ships security system with ajar sensors on all exterior opening ports, doors and hatches •Docking lights, forward and aft •Navigation lights •Tricolor LED on the enclosed bridge overhang and in cockpit •(2) solar panels mounted on flybridge roof •Ventilation fans in attic spaces

Listing Title

Price just reduced

Исключения

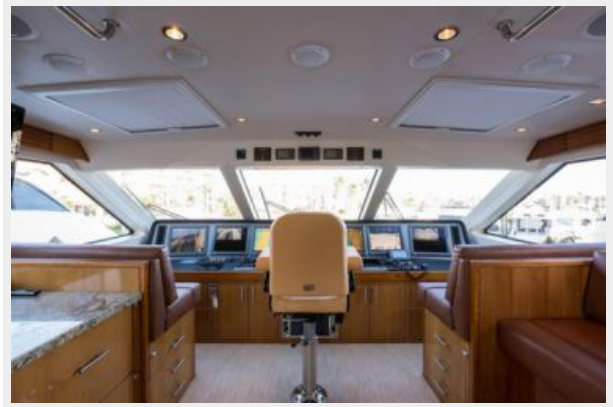
При продаже яхты исключаются личные вещи владельца.

Отказ от ответственности

Компания предоставляет описание судна или яхты добросовестно, но не может гарантировать точность этой информации, а также не ручается за техническое состояние. Покупатель должен проинструктировать своих агентов или оценщиков исследовать представленную информацию более подробно, по собственному желанию. Продажа судна или яхты, изменение цены или снятие с продажи будет происходить без предварительного уведомления.

ФОТОГРАФИИ





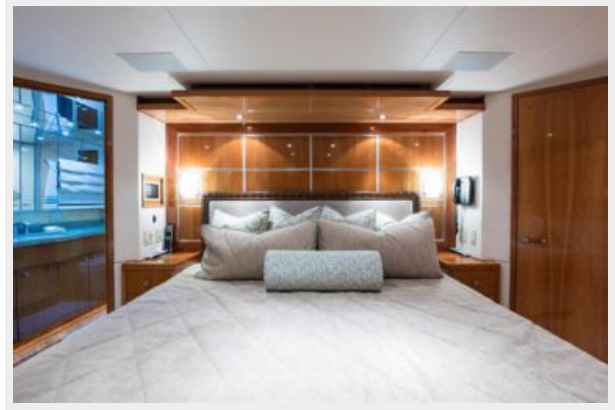


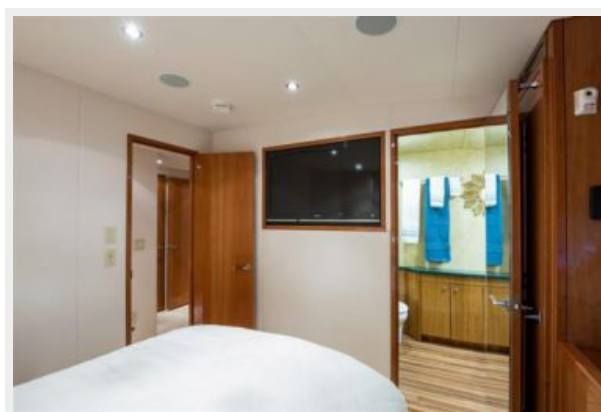
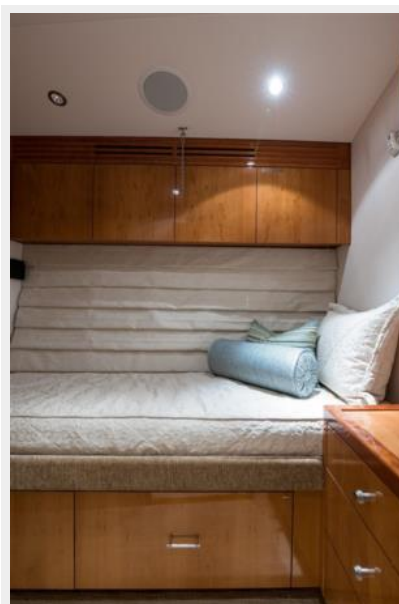






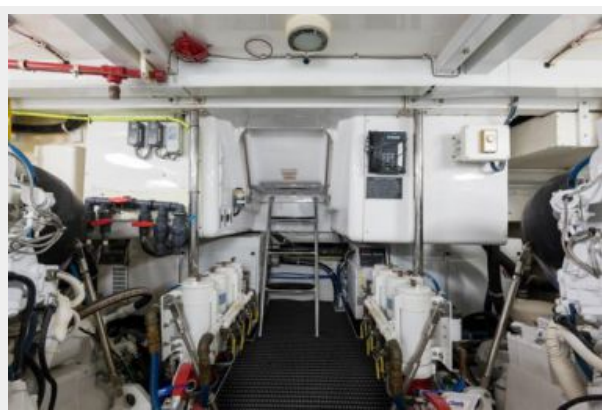












КОНТАКТЫ

Андрей Шестаков (Andrey Shestakov) – ведущий яхтенный брокер отдела продаж яхт и судов компании Shestakov Yacht Sales Inc. Официальный представитель Shestakov Yacht Sales Inc. для русскоговорящих клиентов в центральном офисе компании в Майами/Форт Лодердейл/Флорида/США.

Контактная информация

Email: andrey@shestakovyachtsales.com

Web: shestakovyachtsales.com

Телефоны

Краснодарский край: **+7(918)465-66-44**

США, Майами, Флорида: **+1(954)274-4435**

Время работы

Понедельник – Суббота: **9:00 - 21:00**
EDT

Воскресенье: **Закрето**

Адрес



Harbour Towne Marina, 850 NE 3rd St,
STE 213, Dania, FL 33004