

## CAPT N CAMILLE — CRUISERS YACHTS



**Builder:** [Cruisers Yachts](#)

**Year Built:** 2005

**Model:** Cruiser

**Price:** PRICE ON APPLICATION

**Location:** United States

**LOA:** 37' 0" (11.28m)

**Beam:** 13' 0" (3.96m)

**Max Draft:** 3' 0" (0.91m)

Our experienced yacht broker, Andrey Shestakov, will help you choose and buy a yacht that best suits your needs **Capt N Camille — Cruisers Yachts** from our catalogue. Presently, at **Shestakov Yacht Sales Inc.**, we have a wide variety of yachts available on our sale's list. We also work in close contact with all the big yacht manufacturers from all over the world.

If you would like to buy a yacht **Capt N Camille — Cruisers Yachts** or would like help answering any questions concerning purchasing, selling or chartering a yacht, please call **+1(954)274-4435**

---

# TABLE OF CONTENTS

---

TABLE OF CONTENTS	2
SPECIFICATIONS	3
Overview	3
Basic Information	3
Dimensions	3
Speed, Capacities and Weight	4
Accommodations	4
Hull and Deck Information	4
Engine Information	4
DETAILED INFORMATION	5
Features Included	5
Manufacturer Provided Description	5
Disclaimer	5
Exclusions	5
Disclaimer	6
PHOTOS	7
CONTACTS	18
Contact details	18
Telephones	18
Office hours	18
Address	18

---

# SPECIFICATIONS

---

## Overview

---

This 2005 37' Cruisers Yachts 370 Express is a blend of exciting performance and luxury. Cruisers Yachts has combined contemporary styling and spacious interior with this model. This 370 is equipped with a bulkhead separating the master forward stateroom. This vessel is in PRISTINE condition and ready for its next home. If you are in the market for a super clean twin engine diesel 40' express look no further. Spacious aft settee with good headroom. A single stateroom layout that boast a roomier salon and comfortable settee with generous headroom. The settee folds out and converts into a double birth, should you decide to bring guests along. Comfortable U-shaped sofa for any meal of the day. One of the trademarks of Cruisers Yachts is their attention to detail. This is apparent in the salon, where the handsomely appointed interior is finished in cherry wood and supple tan leather upholstery. You'll feel right at home in this galley. To port, is the L-shaped galley, complete with a fridge, sink, cook top, microwave and a TV with VCR. The granite style counter top and cherry wood cabinets add a classy European look to the cabin. An exciting blend of performance and luxury, Cruisers Yachts 370 Express exhibits world class manufacturing with contemporary styling. With a reputation for innovation and attention to detail, Must See!

## Basic Information

---

**Category:** Cruiser

**Sub Category:** Express

**Model Year:** 2005

**Year Built:** 2005

**Country:** United States

## Dimensions

---

**LOA:** 37' 0" (11.28m)

**Beam:** 13' 0" (3.96m)

**Max Draft:** 3' 0" (0.91m)

**Clearance:** 11' 3" (3.43m)

**MFG Length:** 40' 0" (12.19m)

---

## Speed, Capacities and Weight

---

**Displacement:** 18000 Pounds

**Water Capacity:** 70 Gallons

**Holding Tank:** 55 Gallons

**Fuel Capacity:** 300 Gallons

---

## Accommodations

---

**Total Cabins:** 1

**Total Berths:** 6

**Total Heads:** 2

---

## Hull and Deck Information

---

**Hull Material:** Fiberglass

---

## Engine Information

---

**Engines:** 2

**Manufacturer:** Volvo Penta

**Model:** D-6

**Engine Type:** Inboard

**Fuel Type:** Diesel

---

## DETAILED INFORMATION

---

### Features Included

---

Molded steps and stainless steel handrail for accessing the foredeck Handsomely appointed interior finished in cherry wood Recent Upgrades Main and Brow Canvas (2017) Plastimo Offshore 105 Compass Raymarine Axiom 9 MFD Raymarine Ray 50 VHF Port and Starboard Starting Batteries Genset Battery Kenwood Cockpit Speakers Fusion 10' Woofer Kenwood 1600 Watt Amplifier Powered by twin Volvo D-6 310 hp Diesels 6.5 kw Onan Genset Cockpit fridge with icemaker 5 speaker sound system 6 cd changer 2 flat screen tv's DVD player Central Vacuum system Microwave Glass Cook Top Vacuflush Fresh Water Head Full Enclosed Shower Bulkhead with door for master stateroom 2 station power windlass Camper Canvas Forward Deck lounge Cushions

### Manufacturer Provided Description

---

Cruisers Yachts' 370 Express features a sleek express exterior with plenty of cockpit space and a well-thought-out layout, effectively combining abovedeck comfort with a sweet, performance-driven profile. Most importantly, owners can select from two interior layouts. With the single stateroom layout, the 370 achieves a wide-open feel. The airy salon is one continuous living space from the forward stateroom to the comfortable aft settee. The double stateroom layout offers a midcabin stateroom with twin berths instead of the settee. In either case, the 370 is able to comfortably provide sleeping accommodations for five people and has a generous 6-foot, 6-inch headroom. Another benefit of the 370 is a galley layout that positions the refrigerator conveniently at eye level, which also allows for more storage in the galley. This arrangement is located in close proximity to the cockpit for additional convenience when entertaining or relaxing topside. The forward stateroom, which can be closed off by either a standard privacy curtain or an optional bulkhead and door, boasts a large double bed that is easily accessible for maximum convenience. Additionally, the main head features a separate shower stall, in keeping with the idea of maximizing privacy, comfort and ease of use for those living aboard.

### Disclaimer

---

The Company offers the details of this vessel in good faith but cannot guarantee or warrant the accuracy of this information nor warrant the condition of the vessel. A buyer should instruct his agents, or his surveyors, to investigate such details as the buyer desires validated. This vessel is offered subject to prior sale, price change, or withdrawal without notice.

### Exclusions

---

Owner's personal belongings.

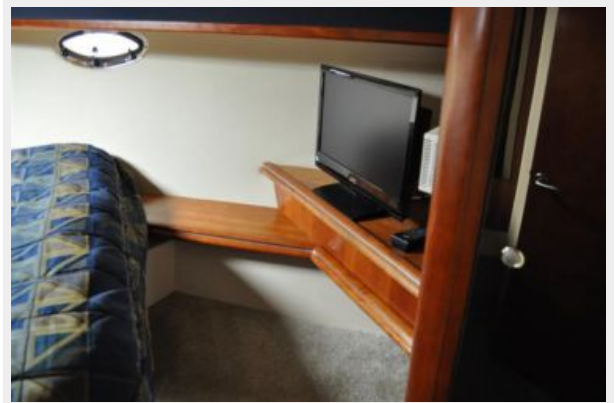
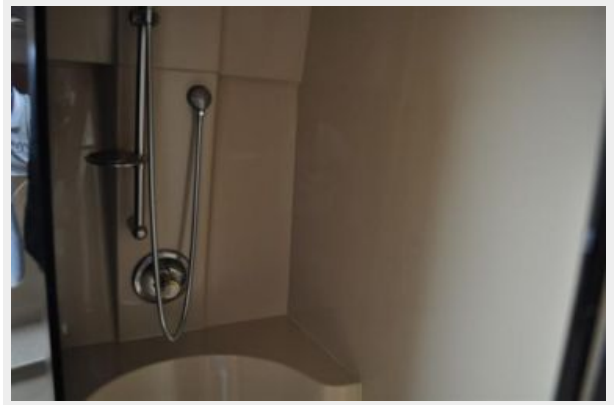
## Disclaimer

---

The Company offers the details of this vessel or yacht in good faith but cannot guarantee or warrant the accuracy of this information nor warrant the condition of the vessel. A buyer should instruct his representatives, agents, or his surveyors, to investigate such details as the buyer desires validated. This vessel or yacht is offered subject to prior sale, price change, or withdrawal without notice.

# PHOTOS









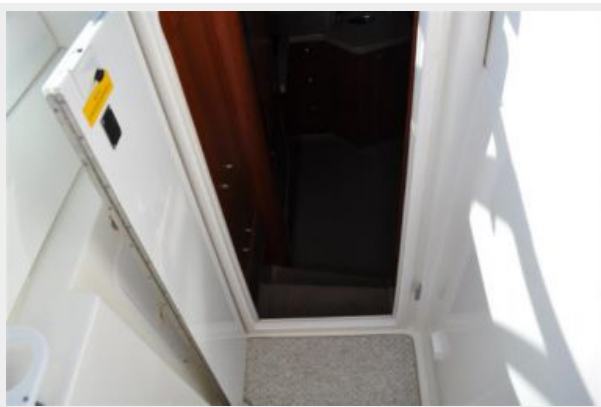


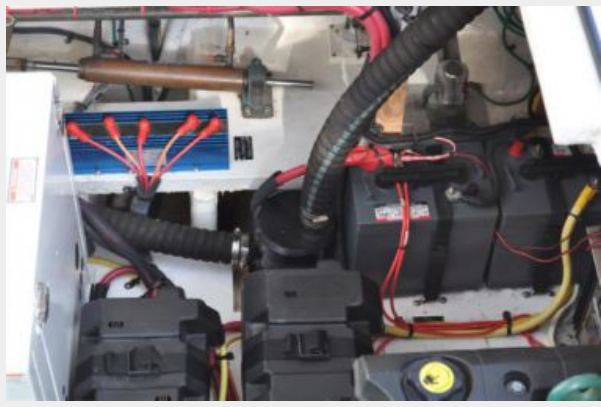
















# CONTACTS

---

Andrey Shestakov, leading yacht broker of the sales department of Shestakov Yacht Sales Inc. Shestakov Yacht Sales Inc., the official representative of the Miami/Fort Lauderdale FL headquarters.

## Contact details

---

Email: [andrey@shestakovyachtsales.com](mailto:andrey@shestakovyachtsales.com)

Web: [shestakovyachtsales.com/en/](http://shestakovyachtsales.com/en/)

## Telephones

---

USA: +1(954)274-4435

## Office hours

---

Monday – Saturday: **9:00 - 21:00** EDT

Sunday: **closed**

## Address

---



Harbour Towne Marina, 850 NE 3rd St,  
STE 213, Dania, FL 33004