

## JANE E — HATTERAS



**Судостроитель:** HATTERAS

**Год постройки:** 2004

**Модель:** Моторная яхта

**Цена:** **ЦЕНА ЯХТЫ ПО ЗАПРОСУ**

**Местонахождение:** United States

**Длина общая:** 80' 0" (24.38m)

**Ширина:** 21' 3" (6.48m)

**Мин. осадка:** 5' 4" (1.63m)

**Макс. осадка:** 5' 4" (1.63m)

**Крейс. скорость:** 22 Kts. (25 MPH)

**Макс. скорость:** 26 Kts. (30 MPH)

Купить **JANE E — HATTERAS** а также выбрать подходящую вам яхту из нашего каталога яхт вам поможет опытный яхтенный брокер Андрей Шестаков. На сегодняшний день компания **Shestakov Yacht Sales Inc.** имеет большое количество яхт в **собственном списке продаж**, а также тесно сотрудничает со всеми крупными **яхтенными производителями** по всему миру.

Для того чтобы купить яхту **JANE E — HATTERAS** а также проконсультироваться по любому вопросу связанному с покупкой, продажей, чартером яхт позвоните по телефону **+7(918)465-66-44**.

# ОГЛАВЛЕНИЕ

---

ОГЛАВЛЕНИЕ	2
ХАРАКТЕРИСТИКИ	8
Основная информация	8
Размеры	8
Скорость, вместимость и масса	8
Размещение	8
Корпус и палуба	8
Информация о двигателе	9
ПОДРОБНОЕ ОПИСАНИЕ	10
Vessel Description	10
Salon	10
Galley	10
Lower Companionway	11
Master Stateroom	11
Master Head	11
Port VIP Stateroom	12
Port VIP Head	12
Guest Bunk Room	12
Guest Head	12
VIP Stateroom	13
VIP Head	13
Flybridge	13
Exterior/Aft Deck	14
Lower Pilothouse	15
Crew Quarters	15
Captain's Stateroom	16
Engine Room & Mechanical Equipment	16
Recent Updates	16

---

Исключения	17
Отказ от ответственности	17
<b>ФОТОГРАФИИ</b>	<b>18</b>
Salon	18
Salon	18
Salon	18
Salon	18
Salon	18
Salon	18
Salon	19
Dining	19
Dining	19
Dining	19
Galley	19
Dining	19
Galley	20
Galley	20
Galley	20
Galley	20
Galley	21
Day Head	21
Laundry	21
Master Stateroom	21
Master Stateroom	22
Master Stateroom	22
Master Stateroom	22
Master Stateroom	22
Master Stateroom	22
Master Stateroom	22
Master Stateroom	22

---

---

Master Stateroom	23
Master Head	23
Master Head	23
Master Head	23
Master Head	24
Master Head	24
Master Head	24
Master Head	24
Forward Stateroom	25
Master Head	25
Forward Stateroom	25
Forward Stateroom	25
Forward Head	26
Forward Stateroom	26
Forward Head	26
Port Guest Stateroom	26
Port Guest Stateroom	27
Port Guest Stateroom	27
Port Guest Stateroom	27
Port Guest Stateroom	27
Port Guest Stateroom	27
Port Guest Head	27
Port Guest Head	27
Port Guest Head	28
Starboard Guest Stateroom	28
Starboard Guest Stateroom	28
Starboard Guest Stateroom	28
Starboard Guest Stateroom	29
Starboard Guest Stateroom	29
Starboard Guest Head	29

---

Starboard Guest Head	29
Starboard Guest Head	30
Captain's Stateroom	30
Captain's Stateroom	30
Captain's Stateroom	30
Crew Quarters	31
Crew Quarters	31
Crew Head	31
Crew Head	31
Pilothouse	32
Pilothouse	32
Pilothouse	32
Pilothouse	32
Pilothouse	32
Pilothouse	32
Helm	33
Helm	33
Helm	33
Flybridge	33
Flybridge	33
Flybridge	33
Flybridge	34
Flybridge	34
Flybridge	34
Flybridge	34
Flybridge	34
Flybridge	35
Flybridge	35
Flybridge	35
Flybridge	35

---

Flybridge	36
Flybridge	36
Flybridge	36
Aft Deck	36
Aft Deck	36
Aft Deck	36
Aft Deck	37
Aft Deck	37
Aft Deck	37
Bow	37
Bow	37
Bow	38
Engine Room	38
Engine Room	38
Engine Room	38
Engine Room	38
Engine Room	38
Engine Room	39
Engine Room	39
Engine Room	39
Engine Room	39
JANE E	40
JANE E	40
JANE E	40
JANE E	40
JANE E	41
JANE E	41
JANE E	41
JANE E	41

---

---

КОНТАКТЫ	42
Контактная информация	42
Телефоны	42
Время работы	42
Адрес	42

# ХАРАКТЕРИСТИКИ

## Основная информация

Тип судна: Моторная яхта

Модельный год: 2004

Год постройки: 2004

Страна: United States

## Размеры

Длина общая: 80' 0" (24.38m)

Ширина: 21' 3" (6.48m)

Мин. осадка: 5' 4" (1.63m)

Макс. осадка: 5' 4" (1.63m)

## Скорость, вместимость и масса

Крейс. скорость: 22 Kts. (25 MPH)

Макс. скорость: 26 Kts. (30 MPH)

Водоизмещение: 189000 Pounds

Вместимость воды: 326 Gallons

Вместимость сточного бака: 388 Gallons Объем топливного бака: 2150 Gallons

## Размещение

Всего кают: 6

Всего ком. состава: 6

## Корпус и палуба

Материал корпуса: Fiberglass



## Информация о двигателе

---

**Двигатели:** 2

**Производитель:** Caterpillar

**Модель:** C30

**Тип двигателя:** Inboard

**Тип топлива:** Diesel

---

# ПОДРОБНОЕ ОПИСАНИЕ

---

## Vessel Description

---

Step aboard the Hatteras 80 Motoryacht JANE E and you'll instantly recognize the world-class design and customization unlike any other on the market. She's a beautiful, well-appointed yacht with sumptuous living accommodations that are second to none. This boat effectively fills the gap between large motoryachts and megayachts! **With \$200,000 spent in the recent months**, JANE E is ready to leave for the Bahamas tomorrow.

## Salon

---

- **New** Custom upholstered sofa with storage
- (2) Leather swivel recliners
- (2) Custom end tables
- Custom coffee table, **New**
- Carpet
- A/C D/C Lighting
- Curved stainless steel aft sliding doors with shades
- Roman shades
- China storage
- Glassware storage cabinets
- Eight-place dining table with custom high gloss wood top
- Sunken wet bar with (3) chairs and Onyx tops and flooring
- Wine cooler
- TV on lift system
- Crestron system
- High gloss wood inlays in headliner
- Yamaha stereo system
- Scotsman refrigerator
- **New** Ice maker

## Galley

---

- Full size Sub Zero refrigerator freezer
- Granite countertops
- Trash compactor Dishwasher
- Full size oven
- Four-burner cooktop
- Microwave
- Abundant cabinet storage

- TV

---

## Lower Companionway

---

- Curved stairway to lower living quarters
- Custom wood flooring
- Wood inlay in overhead
- Large pantry & storage locker
- Whirlpool stackable washer & Dryer
- Central vacuum connection and tools
- Access to all state rooms
- Spot Zero fresh water system

---

## Master Stateroom

---

- **New soft goods**
- King bed with storage under
- (2) Night stands
- Fluted valence boards with AC outlets
- Mirrored aft bulkhead with custom headboard
- Abundant drawers storage
- Abundant hanging lockers
- (6) Large vertical hull side pot lights
- Safe in both hanging lockers
- TV
- Stereo & DVD player
- Roman shades

---

## Master Head

---

- His & Hers head with large custom Onyx shower
- (2) Head Hunter toilets
- Onyx lavatory tops and backsplashes
- Onyx floors
- Undermount sinks
- Mirrored overheads
- Mirrored lavatory surrounds
- Mirrored medicine cabinets
- Make up table with stool

---

## Port VIP Stateroom

---

- Queen bed with storage under
- (2) Night stands
- Mirrored bulkhead with custom headboard
- Abundant upper cabinet storage
- Hanging locker
- Abundant drawer storage
- Carpet
- Hull side port lights
- Roman shades
- TV
- Stereo & DVD Player

---

## Port VIP Head

---

- Full size jacuzzi tub/shower with Onyx surround - **New glass slider**
- Mirrored overhead
- Mirror above lavatory
- Mirrored medicine cabinet
- Onyx floor
- Onyx lavatory top and backsplash
- White Head Hunter toilet

---

## Guest Bunk Room

---

- Large offset bunks
- **New soft goods**
- Carpet
- TV
- Stereo & DVD Player
- Hanging locker
- Drawer storage
- Night stand

---

## Guest Head

---

- Full shower
- Onyx floor
- Onyx lavatory top and backsplash
- Undermount sink

- Head Hunter toilet
- Mirrored overhead
- Mirrored medicine cabinet

## VIP Stateroom

---

- **New soft goods**
- Walkaround queen bed with storage under
- (2) Night stands
- Mirrored bulkhead
- Custom headboard
- Abundant upper cabinet storage
- Hanging lockers
- Carpet
- TV
- Stereo & DVD player
- Overhead hatch with Ocean air shade

## VIP Head

---

- Onyx lavatory top and backsplash
- Onyx floor
- Head Hunter toilet
- Mirrored overhead
- Mirrored medicine cabinet
- Undermount sink
- Full size shower
- Fluted valence boards with A/C outlet

## Flybridge

---

- Fiberglass hardtop
- Center Stidd Captain's electric helm seat with stainless steel pedestal
- (2) Stidd Companion helm seats with stainless steel pedestal
- Hydraulic bow thruster control
- Electric stern thruster control
- Engine clutch and throttle controls
- Port and starboard engine stop/start switch panels
- (2) ACR spotlight controls
- Trim tab controls
- Anchor control switch

- Navigation light switch
  - Fuel transfer switch
  - Upgraded Fusion stereo
  - Robertson AP20 autopilot
  - Furuno RD30 depth
  - Raymarine Tridata depth
  - **New Garmin XM Weather**
  - **New Chirp sounder**
  - **New Garmin 12 kW radar**
  - **(4) New Garmin 8617 MDF multifunction display**
  - **(5) New cameras**
  - Naiad stabilizer control
  - Big Bay 15" screen with ELBEX CCTV switcher
  - Hatteras ship and engine monitoring system
  - ICOM M602 VHF
  - Raymarine 430 hailer
  - Danforth compass
  - SAT dome
  - Winslow life raft (New certification)
  - Port and starboard flip down wing controls
  - Cruiser style stainless steel helm wheel with hydraulic steering
  - Three-sided EZ2CY enclosure (New aft enclosure)
  - Forward console access to lower station with sliding door
  - Aft access from boat deck to aft deck with hinged door
  - **New Seadeck decking on bridge**
  - **New upholstery on bridge**
  - Wet bar with Scotsman refrigerator and (New) icemaker, storage with granite top with cover
- 
- **(4) New Bar stools with stainless steel pedestals**
  - **New port and starboard seating with storage, cushions, throw pillows and covers**
  - (3) Tables with granite tops, stainless steel pedestals with covers
  - Hatteras style electronics mast on hardtop with LED boat deck lighting
  - Fiberglass BBQ cabinet with double electric Gaggenau grills and cover
  - Electric water hose reel mounted in BBQ cabinet
  - Marquipt telescope tender lift hydraulic 2000

---

## Exterior/Aft Deck

---

- **New SeaDeck decking**
- Boat is painted Awlcraft 2000 Snow White
- Boot Stripe painted Awlcraft 2000 Black
- Black bottom paint
- Aft deck lounge with cushions and **new upholstery**

- (4) Folding chairs with cushions
- Teak table with compass rose inlay and stainless steel pedestals
- Port and starboard fender tracking
- 100 amp Shore cord with Cablemasters aft
- (2) 100 amp Shore cord with Cablemasters forward
- Aft deck overhead lighting
- Custom built storage box aft deck
- 110 Volt Receptacle
- **New aft deck cameras**
- TV mounted on bulkhead
- Port and starboard docking winches
- Port side flip down docking controls
- Port side access door to crew quarters and engine room
- Swim platform with removable hoop style stainless steel rails
- Swim platform shower
- Fresh water washdown
- Forward windshield cover
- Port and starboard forward storage lockers
- Port and starboard mounted dunnage boxes
- Fresh water washdown connection forward
- Forward storage area for all shore connections & ladder
- Fiberglass pulpit with stainless steel anchor chute
- Polished stainless steel plow style anchor with 300' chain
- Hydraulic anchor windlass
- In-Deck chain locker with access

---

## Lower Pilothouse

---

Day Head with:

- Black Head Hunter toilet
- Nickle silver sink faucet
- Nickle silver undermount sink
- Amber Onyx lavatory top
- Amber Onyx flooring
- Maple plank flooring with Mahogany inlay and border

---

## Crew Quarters

---

- **New Amtico flooring**
- Access from aft deck & swim platform
- Storage in stairwell from aft deck

- Crew stateroom has bunk beds with Murphy style upper bunk to port
- Hanging locker
- Night stand
- Samsung TV
- Stereo/DVD Player
- Door style Sub Zero refrigerator & freezer
- Bosch Washer & Dryer
- Panasonic microwave
- Prep table top over washer/dryer
- Fiberglass shower
- Lavatory with solid surface top and sink
- Medicine cabinet with mirrored doors
- Head Hunter toilet

---

## Captain's Stateroom

---

- Queen bed with storage underneath
- Night stand
- Hanging locker
- TV
- Stereo/DVD player

---

## Engine Room & Mechanical Equipment

---

- All engine services current, with new aftercoolers
- Twin Cat C30 engines with 1830 hours
- Twin 27.5 Onan generators - stbd 2600 hours, port 3200 hours CAT engine chrome package (2) 5-ton A/C chillers, New 2017 A/C in engine room Tool boxes Remote engine gauge package New engine room cameras A/C and D/C Distribution panels Central Vacuum canister Engine, gear, and generator oil change connections Racor fuel polishing system Dual engine Racor fuel/water separator filters Generator Racor fuel/water separator filters Halon fire extinguishing system 8-D AGM Engine/ship service batteries Battery charger ExCell 2 HP 3 gallon air compressor Naiad Marine hydraulic machinery A/C and D/C LED lighting, New LED Fuel transfer pump and spare Water maker D/C Bilge pumps Emergency bilge pumps 50 Gallon reserve oil tank

---

## Recent Updates

---

2016

- New Fusion radio and speakers on flybridge



- (2) New Garmin GPS

## 2017

- New 8D Batteries installed
- New Spot Zero membrane
- (2) New A/C Raw water pumps
- (2) New A/C ball valves
- (2) New A/C 5-ton chillers
- New Mach 5 Fresh water pump
- New starboard engine room blower motor
- New Mastervolt battery charger
- (2) Re-chromed aft docking windlass caps
- All Onyx, granite cleaned and polished by American Tile
- All custom wood table tops polished by AJ Originals

## 2018

- New Flybridge Garmin electronics \$65,000
- New soft goods in staterooms and outdoor seating
- All engine service complete with new aftercoolers \$65,000
- Custom aft deck storage cabinet
- New black/Gray water pump
- New Expansion tank for water system
- New Seadeck decking on bridge and aft deck

## Исключения

---

При продаже яхты исключаются личные вещи владельца.

## Отказ от ответственности

---

Компания предоставляет описание судна или яхты добросовестно, но не может гарантировать точность этой информации, а также не ручается за техническое состояние. Покупатель должен проинструктировать своих агентов или оценщиков исследовать представленную информацию более подробно, по собственному желанию. Продажа судна или яхты, изменение цены или снятие с продажи будет происходить без предварительного уведомления.

# ФОТОГРАФИИ

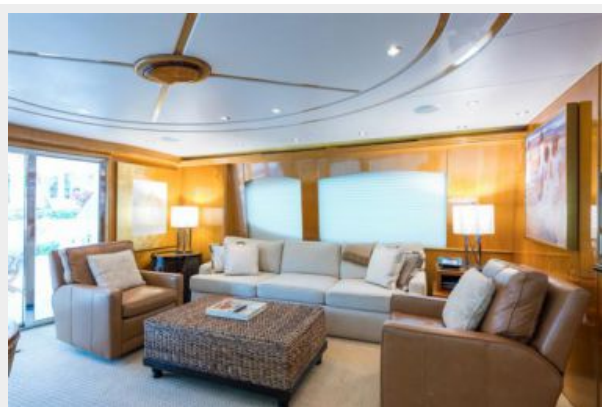
Salon



Salon



Salon



Salon



Salon



Salon



Salon



Dining



Dining



Dining



Dining



Galley





**Galley**



**Galley**



**Galley**



**Galley**



**Galley**



**Day Head**



**Laundry**



**Master Stateroom**



**Master Stateroom**



**Master Stateroom**



**Master Stateroom**



**Master Stateroom**



**Master Stateroom**



**Master Stateroom**





**Master Stateroom**



**Master Head**



**Master Head**



**Master Head**



**Master Head**



**Master Head**



**Master Head**



**Master Head**





**Master Head**



**Forward Stateroom**



**Forward Stateroom**



**Forward Stateroom**



**Forward Stateroom**



**Forward Head**



**Forward Head**



**Port Guest Stateroom**



**Port Guest Stateroom**



**Port Guest Stateroom**



**Port Guest Stateroom**



**Port Guest Stateroom**



**Port Guest Head**



**Port Guest Head**





**Port Guest Head**



**Starboard Guest Stateroom**



**Starboard Guest Stateroom**



**Starboard Guest Stateroom**



### Starboard Guest Stateroom



### Starboard Guest Stateroom



### Starboard Guest Head



### Starboard Guest Head



**Starboard Guest Head**



**Captain's Stateroom**



**Captain's Stateroom**



**Captain's Stateroom**



**Crew Quarters**



**Crew Quarters**



**Crew Head**



**Crew Head**





**Pilothouse**



**Pilothouse**



**Pilothouse**



**Pilothouse**



**Pilothouse**



**Pilothouse**





**Helm**



**Helm**



**Helm**



**Flybridge**



**Flybridge**



**Flybridge**



**Flybridge**



**Flybridge**



**Flybridge**



**Flybridge**



**Flybridge**



**Flybridge**



**Flybridge**

**Flybridge**





**Flybridge**



**Flybridge**



**Flybridge**



**Aft Deck**



**Aft Deck**



**Aft Deck**



**Aft Deck**



**Aft Deck**



**Aft Deck**



**Bow**



**Bow**

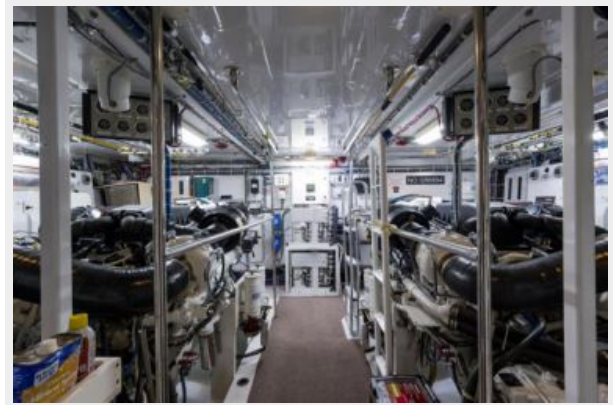




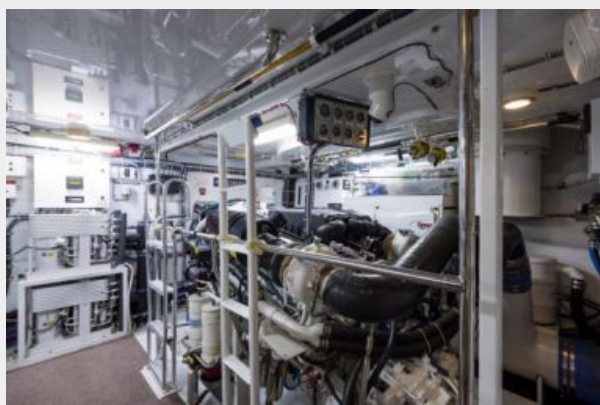
**Bow**



**Engine Room**



**Engine Room**



**Engine Room**



**Engine Room**



**Engine Room**



**Engine Room**



**Engine Room**



**Engine Room**

**Engine Room**





**JANE E**



**JANE E**



**JANE E**



**JANE E**





**JANE E**



**JANE E**



**JANE E**



**JANE E**



# КОНТАКТЫ

---

Андрей Шестаков (Andrey Shestakov) – ведущий яхтенный брокер отдела продаж яхт и судов компании Shestakov Yacht Sales Inc. Официальный представитель Shestakov Yacht Sales Inc. для русскоговорящих клиентов в центральном офисе компании в Майами/Форт Лодердейл/Флорида/США.

## Контактная информация

---

Email: [andrey@shestakovyachtsales.com](mailto:andrey@shestakovyachtsales.com)

Web: [shestakovyachtsales.com](http://shestakovyachtsales.com)

## Телефоны

---

Краснодарский край: **+7(918)465-66-44**

США, Майами, Флорида: **+1(954)274-4435**

## Время работы

---

Понедельник – Суббота: **9:00 - 21:00**  
EDT

Воскресенье: **Закрыто**

## Адрес

---



Harbour Towne Marina, 850 NE 3rd St,  
STE 213, Dania, FL 33004