

30FT 1997 ENDEAVOUR CATAMARAN MARK II — ENDEAVOUR



Builder: ENDEAVOUR

Year Built: 1997

Model: Catamaran

Price: PRICE ON APPLICATION

Location: United States

LOA: 30' 0" (9.14m)

Beam: 14' 8" (4.47m)

Min Draft: 2' 10" (0.86m)

Cruise Speed: 5 Kts. (6 MPH)

Our experienced yacht broker, Andrey Shestakov, will help you choose and buy a yacht that best suits your needs 30ft 1997 Endeavour Catamaran Mark II — ENDEAVOUR from our catalogue. Presently, at Shestakov Yacht Sales Inc., we have a wide variety of yachts available on our sale's list. We also work in close contact with all the big yacht manufacturers from all over the world.

If you would like to buy a yacht 30ft 1997 Endeavour Catamaran Mark II — ENDEAVOUR or would like help answering any questions concerning purchasing, selling or chartering a yacht, please call +1(954)274-4435

TABLE OF CONTENTS

TABLE OF CONTENTS	2
SPECIFICATIONS	3
Overview	3
Basic Information	3
Dimensions	3
Speed, Capacities and Weight	3
Accommodations	4
Hull and Deck Information	4
Engine Information	4
DETAILED INFORMATION	5
Accommodations	5
Engines and Mechanical	5
Electronics	5
Electrical	5
Deck	6
Inside equipment	6
Covers and canvas	6
Sails & Rigging	6
Exclusions	7
Disclaimer	7
PHOTOS	8
CONTACTS	16
Contact details	16
Telephones	16
Office hours	16
Address	16

SPECIFICATIONS

Overview

RARE AND SOUGHT AFTER ENDEAVOUR MARK II CATAMARAN

The Endeavour Mark II is a huge boat for its length. This cruising catamaran has it all. Two stateroom, Diesel Generator, AC, New electronics, dingy with outboard. Brand new sails, all new running rigging and twin diesel power. Check out the full listing for the extensive list. There are very few if any of these popular and hard to find models on the market. Sparkling clean and ready to go.

Basic Information

Category: Catamaran

Model Year: 1997

Year Built: 1997

Country: United States

Dimensions

LOA: 30' 0" (9.14m)

LWL: 30' 0" (9.14m)

LOD: 30' 0" (9.14m)

Beam: 14' 8" (4.47m)

Min Draft: 2' 10" (0.86m)

Clearance: 47' 0" (14.33m)

Speed, Capacities and Weight

Cruise Speed: 5 Kts. (6 MPH)

Displacement: 7800 Pounds

Water Capacity: 60 Gallons

Holding Tank: 15 Gallons

Fuel Capacity: 60 Gallons

Accommodations

Total Cabins: 2

Total Berths: 2

Total Heads: 1

Hull and Deck Information

Hull Material: Fiberglass

Engine Information

Engines: 2

Manufacturer: Volvo

Model: MD2010D

Fuel Type: Diesel

DETAILED INFORMATION

Accommodations

The interior features two private staterooms, head with large shower, and a full galley with refig/freezer, propane stove with oven, and microwave. The salon is large and has a folding table that will seat 6 for dinner. There is abundant storage throughout the boat

It is ready for comfortable and extended cruising and is easily handled with the mainsail with Lazy Jacks and jib with self-tending camber spar. Around the docks the twin engines facilitate handling.

Interior shows like a much newer boat. You will not find a nicer Mark II anywhere

Engines and Mechanical

- Twin Volvo 10 HP diesels with 800 hours
- New stainless steel exhaust manifolds 2017
- Sail drives with folding propellers.
- Next Gen 3.5Kw Generator with 138 hours
- Brand new 1600 Btu AC unit with remote control and wireless.

Electronics

Electronics are mostly new and include?

- 2017 Raymarine MDF 7" display
- 2017 Raymarine Autopilot
- 2018 West Marine VHF
- Raymarine ST60 Tri-data
- Compass
- Jenson radio and CD player
- LED TV with DVD player

Electrical

- Next Gen diesel generator 3.5Kw with 185 hours.
- Shore power inlet
- 110V Electrical
- Shore power cord

Deck

- 2017 stainless steel propane outdoor grill
- Swimming ladder
- Davits with cooler storage
- Cockpit cushions
- New 2018 Electric windlass
- 3 year old West Marine 9' inflatable
- Yamaha 6HP 4 stroke outboard with very low hours.

Inside equipment

- New 2018 16000 BTU reverse cycle air conditioner with remote and wireless.
- Battery charger 40 AMP
- 2018 all new carpet
- Hot water heater
- Electric bilge pump
- 2 manual bilge pumps
- Hillerange propane two burner stove and oven
- Microwave oven
- Refrigerator 12/110 V
- Manual head

Covers and canvas

- Bimini top with dodger
- Spray hood
- New 2018 Lazyjacks
- New 2018 Mainsail cover
- Genoa cover

Sails & Rigging

All sails are brand new and have not been used as of 10/18 *

- New 2018 Genoa-Jib with Camber Spar
- New 2018 Battened mainsail
- New 2017 running rigging
- Helm steering wheel with electronic pod.
- * Older but servisable spinnaker,

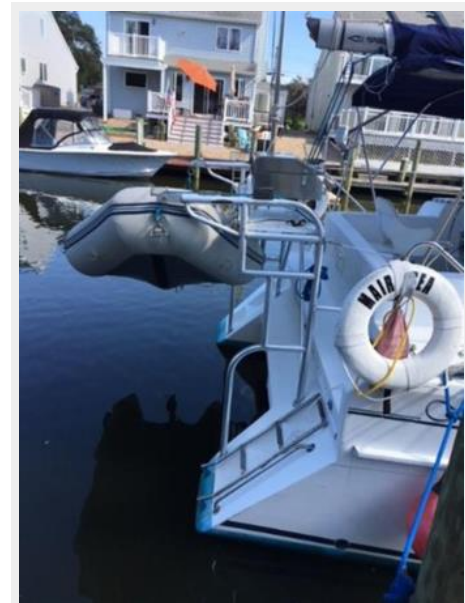
Exclusions

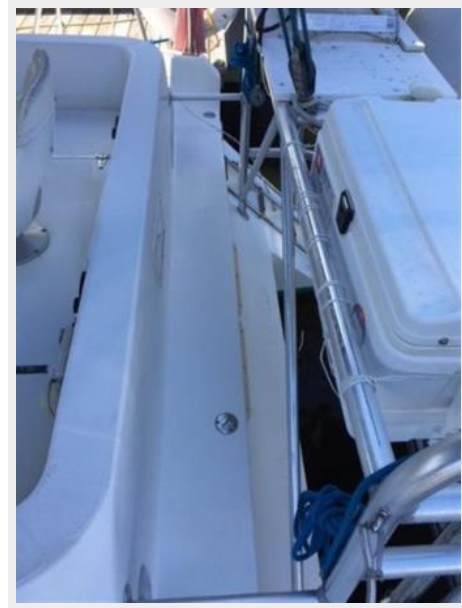
Owner's personal belongings.

Disclaimer

The Company offers the details of this vessel or yacht in good faith but cannot guarantee or warrant the accuracy of this information nor warrant the condition of the vessel. A buyer should instruct his representatives, agents, or his surveyors, to investigate such details as the buyer desires validated. This vessel or yacht is offered subject to prior sale, price change, or withdrawal without notice.

PHOTOS

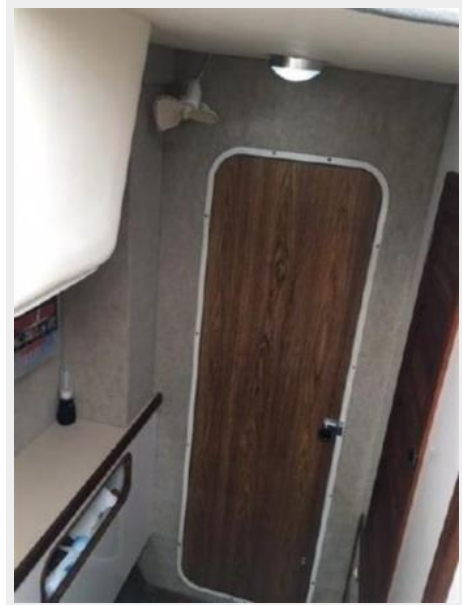




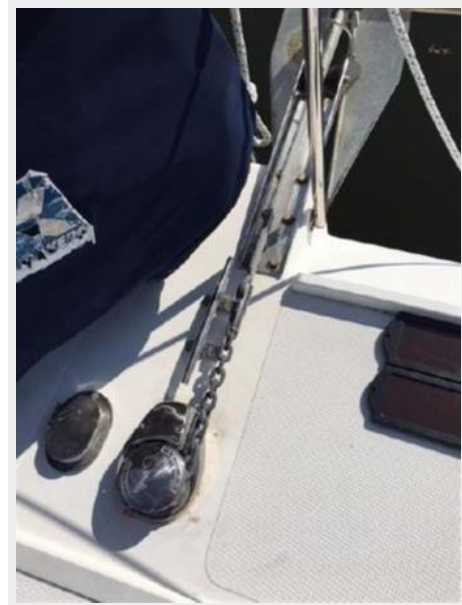












CONTACTS

Andrey Shestakov, leading yacht broker of the sales department of Shestakov Yacht Sales Inc. Shestakov Yacht Sales Inc., the official representative of the Miami/Fort Lauderdale FL headquarters.

Contact details

Email: andrey@shestakovyachtsales.com

Web: shestakovyachtsales.com/en/

Telephones

USA: +1(954)274-4435

Office hours

Monday – Saturday: **9:00 - 21:00** EDT

Sunday: **closed**

Address



Harbour Towne Marina, 850 NE 3rd St,
STE 213, Dania, FL 33004