

GYPSEA SOUL — CAPE DORY



Судостроитель: CAPE DORY

Длина общая: 28' 0" (8.53m)

Год постройки: 1977

Модель: Крейсерская яхта

Цена: **ЦЕНА ЯХТЫ ПО ЗАПРОСУ**

Местонахождение: United States

Купить **Gypsea Soul — CAPE DORY** а также выбрать подходящую вам яхту из нашего **каталога яхт** вам поможет опытный яхтенный брокер Андрей Шестаков. На сегодняшний день компания **Shestakov Yacht Sales Inc.** имеет большое количество яхт в **собственном списке продаж**, а также тесно сотрудничает со всеми крупными **яхтенными производителями** по всему миру.

Для того чтобы купить яхту **Gypsea Soul — CAPE DORY** а также проконсультироваться по любому вопросу связанному с покупкой, продажей, чартером яхт позвоните по телефону **+7(918)465-66-44**.

ОГЛАВЛЕНИЕ

ОГЛАВЛЕНИЕ	2
ХАРАКТЕРИСТИКИ	3
Обзор	3
Основная информация	4
Размеры	5
Размещение	5
Корпус и палуба	5
Информация о двигателе	5
ПОДРОБНОЕ ОПИСАНИЕ	6
Additional Information	6
Исключения	7
Отказ от ответственности	7
ФОТОГРАФИИ	9
КОНТАКТЫ	14
Контактная информация	14
Телефоны	14
Время работы	14
Адрес	14

ХАРАКТЕРИСТИКИ

Обзор

- Well equipped, upgraded and maintained for cruising the coastal waters of the US including the Florida Keys and Bahamas.
- Gypsea Soul has not been a “dock dweller”. Frequent day sailing and cruising has kept her in a state of readiness.
- Dry boat; free of leaks, drips and moisture.
- Deck and cockpit was painted with Interlux Brightside poly-urathane July of 2017 and hull was painted with awl-grip May of 2018.
- Last haul, inspection and bottom paint was May 2018 (2 gal SR60). No blister history.
- The Cape Dory 28 is a sturdy, traditionally styled, compact cruising sloop ideal for family coastal cruising yet capable of offshore sailing.
- Built in 1977, hull #133 of 388, this Carl Alberg design features an attractive sheer with teak rub rails above water, a full keel with cut away fore foot and keel hung rudder below the water line.
- Tiller steering
- 8 opening bronze ports
- stainless steel bow and stern pulpits with life lines
- Engine: Re-powered by 15 hp Yanmar 2YM15 diesel replacing the original German Ferryman diesel in May 2014.
- Total time on new engine is less than 600 hours. Burns approximately .4 gals/hour from a 12 gallon stainless steel fuel tank.
- Racor 500 3-stage filter; Morse Marine Engine controls; 3-blade prop 13-9 (large blade) with spare 13-10 (small blade) prop.
- Sails and Rigging: Sloop rigged; club foot was replaced with self-furler installed on forestay 9/2011 (club foot boom and fitting is off the boat but is retained if wanted).
- Current head sails include 130 genoa (summer sail) and 100 jib (winter sail).
- There is also an asymmetrical spinnaker. Mack Pack lazy jacks installed 2011.
- Jib and main halyards replaced 2014.
- Main sail and standing rigging was replaced by Mack Sails in 2014.
- Whisker pole and Barlow winches (2-20 and 3-15).
- Cape Dory used iron plates to anchor chain-plates. This issue was addressed with Bronze external chain plates installed 2017.
- Canvas and Ground Tackle: Good canvas – bimini top and 3 part sun screens (2012) and replaced dodger 2016.
- Ground tackle: 21 pound claw with 10 foot of chain and 150 foot ½ inch nylon. Fortress with 10 foot of chain and 150 foot ½ inch nylon
- Electric and Electronics: The current owner hired a professional to clean up the panels and wiring in 2011.
- Electrical system includes the following: 15 amp 115 electric service: 130 amp shore power cord; 115 volt circuit breaker panel to include single ground fault outlet, ProMar dual battery

charger (2018), Refrigeration

- .A very quiet, fuel efficient, Honda EU1000 generator manages electric power at anchor to include enjoyment of TV with DVD player
- 12 volt electric service: engine service battery; deep discharge house battery (new Nov 2018); two automatic Rule bilge pumps (800 and 1600 gph; 12 volt service panel with fused circuits.
- Electronics:Auto tiller Navico TP200; AdvanSea shows depth and volts – new paddle wheel required for speed and distance; Garmin handheld 76C GPS mounts in cockpit next to AdvanSea and compass; Quest Standard Horizon VHF radio, Sony radio/CD player; hand held spotlight; hand held VHF radio; battery power LED anchor light.
- Navigation items include hand held compass, course protractor, dividers, charts and cruising guides for Bahamas, Florida and Florida Keys
- Cabin amenities:
 - two cushion V-berth, with hatch and two opening ports. Water tank under V-berth.
 - enclosed head has a Wilcox – Crittenden Head Mate, hanging locker and two opening ports. There is a holding tank with Y-valve to select deck pump out fitting or hand pump and seacock
 - The main cabin features a setee with bottom and back cushions and book shelf on each side; stow able table in center of cabin; a hatch and four opening ports.
 - The galley is aft and adjacent steps into the cockpit. A refrigerated ice box and sink is starboard and Force Ten propane two burner stove is port. Foot pumps supply water to galley and head. Galley is supplied with appropriate dishes, pots and pans, utensils and storage containers.
 - The forward bulkhead of main cabin has a Force Ten Propane Cozy Cabin Heater
- Safety Equipment and Miscellaneous Gear: manual bilge pump mounted in cockpit; 2 safety harness/self-inflating vests; 2 ACR-PLF; 2 jack lines; 4 PFD; Life Sling with canvass cover; radar reflector; 2 fire extinguishers; horn; hand held flares; flare gun w/flares;
- Cape Dory Owner's Manual, other manuals include Yanmar engine, Honda generator and electronic items
- Tool box includes metric and US; spare parts kit;
- two sets of 8 dock lines, 4 snubbers; 3 large bumpers
- 4 cockpit cushions and two chair type seats;boarding ladder; 2 boat hooks; 2 wind scoops

Основная информация

Тип судна: Крейсерская яхта

Модельный год: 1977

Год постройки: 1977

Страна: United States

Размеры

Длина общая: 28' 0" (8.53m)

Размещение

Всего кают: 1

Всего ком. состава: 1

Корпус и палуба

Материал корпуса: Fiberglass

Информация о двигателе

Двигатели: 1

Производитель: Yanmar

Модель: 2YM15

Тип топлива: Diesel

ПОДРОБНОЕ ОПИСАНИЕ

Additional Information

- Well equipped, upgraded and maintained for cruising the coastal waters of the US including the Florida Keys and Bahamas.
- Gypsea Soul has not been a “dock dweller”. Frequent day sailing and cruising has kept her in a state of readiness.
- Dry boat; free of leaks, drips and moisture.
- Deck and cockpit was painted with Interlux Brightside poly-urathane July of 2017 and hull was painted with awl-grip May of 2018.
- Last haul, inspection and bottom paint was May 2018 (2 gal SR60). No blister history.
- The Cape Dory 28 is a sturdy, traditionally styled, compact cruising sloop ideal for family coastal cruising yet capable of offshore sailing.
- Built in 1977, hull #133 of 388, this Carl Alberg design features an attractive sheer with teak rub rails above water, a full keel with cut away fore foot and keel hung rudder below the water line.
- Tiller steering
- 8 opening bronze ports
- stainless steel bow and stern pulpits with life lines
- Engine: Re-powered by 15 hp Yanmar 2YM15 diesel replacing the original German Ferryman diesel in May 2014.
- Total time on new engine is less than 600 hours. Burns approximately .4 gals/hour from a 12 gallon stainless steel fuel tank.
- Racor 500 3-stage filter; Morse Marine Engine controls; 3-blade prop 13-9 (large blade) with spare 13-10 (small blade) prop.
- Sails and Rigging: Sloop rigged; club foot was replaced with self-furler installed on forestay 9/2011 (club foot boom and fitting is off the boat but is retained if wanted).
- Current head sails include 130 genoa (summer sail) and 100 jib (winter sail).
- There is also an asymmetrical spinnaker. Mack Pack lazy jacks installed 2011.
- Jib and main halyards replaced 2014.
- Main sail and standing rigging was replaced by Mack Sails in 2014.
- Whisker pole and Barlow winches (2-20 and 3-15).
- Cape Dory used iron plates to anchor chain-plates. This issue was addressed with Bronze external chain plates installed 2017.
- Canvas and Ground Tackle: Good canvas – bimini top and 3 part sun screens (2012) and replaced dodger 2016.
- Ground tackle: 21 pound claw with 10 foot of chain and 150 foot ½ inch nylon. Fortress with 10 foot of chain and 150 foot ½ inch nylon
- Electric and Electronics: The current owner hired a professional to clean up the panels and wiring in 2011.
- Electrical system includes the following: 15 amp 115 electric service: 130 amp shore power cord; 115 volt circuit breaker panel to include single ground fault outlet, ProMar dual battery

charger (2018), Refrigeration

- .A very quiet, fuel efficient, Honda EU1000 generator manages electric power at anchor to include enjoyment of TV with DVD player
- 12 volt electric service: engine service battery; deep discharge house battery (new Nov 2018); two automatic Rule bilge pumps (800 and 1600 gph; 12 volt service panel with fused circuits.
- Electronics:Auto tiller Navico TP200; AdvanSea shows depth and volts – new paddle wheel required for speed and distance; Garmin handheld 76C GPS mounts in cockpit next to AdvanSea and compass; Quest Standard Horizon VHF radio, Sony radio/CD player; hand held spotlight; hand held VHF radio; battery power LED anchor light.
- Navigation items include hand held compass, course protractor, dividers, charts and cruising guides for Bahamas, Florida and Florida Keys
- Cabin amenities:
 - two cushion V-berth, with hatch and two opening ports. Water tank under V-berth.
 - enclosed head has a Wilcox – Crittenden Head Mate, hanging locker and two opening ports. There is a holding tank with Y-valve to select deck pump out fitting or hand pump and seacock
 - The main cabin features a setee with bottom and back cushions and book shelf on each side; stow able table in center of cabin; a hatch and four opening ports.
 - The galley is aft and adjacent steps into the cockpit. A refrigerated ice box and sink is starboard and Force Ten propane two burner stove is port. Foot pumps supply water to galley and head. Galley is supplied with appropriate dishes, pots and pans, utensils and storage containers.
 - The forward bulkhead of main cabin has a Force Ten Propane Cozy Cabin Heater
- Safety Equipment and Miscellaneous Gear: manual bilge pump mounted in cockpit; 2 safety harness/self-inflating vests; 2 ACR-PLF; 2 jack lines; 4 PFD; Life Sling with canvass cover; radar reflector; 2 fire extinguishers; horn; hand held flares; flare gun w/flares;
- Cape Dory Owner's Manual, other manuals include Yanmar engine, Honda generator and electronic items
- Tool box includes metric and US; spare parts kit;
- two sets of 8 dock lines, 4 snubbers; 3 large bumpers
- 4 cockpit cushions and two chair type seats;boarding ladder; 2 boat hooks; 2 wind scoops

Исключения

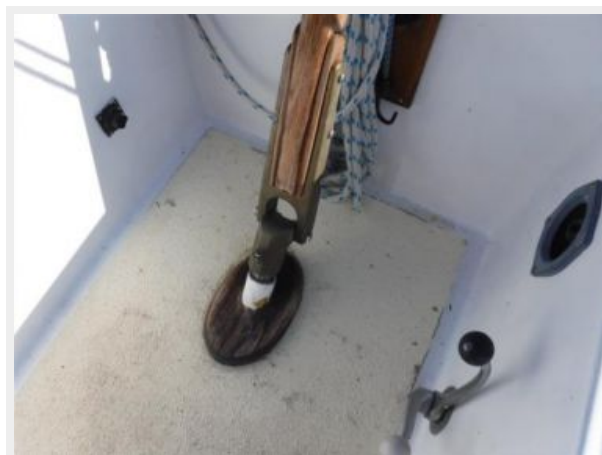
При продаже яхты исключаются личные вещи владельца.

Отказ от ответственности

Компания предоставляет описание судна или яхты добросовестно, но не может гарантировать точность этой информации, а также не ручается за техническое состояние. Покупатель должен проинструктировать своих агентов или оценщиков исследовать представленную информацию более подробно, по собственному желанию.

Продажа судна или яхты, изменение цены или снятие с продажи будет происходить без предварительного уведомления.

ФОТОГРАФИИ











КОНТАКТЫ

Андрей Шестаков (Andrey Shestakov) – ведущий яхтенный брокер отдела продаж яхт и судов компании Shestakov Yacht Sales Inc. Официальный представитель Shestakov Yacht Sales Inc. для русскоговорящих клиентов в центральном офисе компании в Майами/Форт Лодердейл/Флорида/США.

Контактная информация

Email: andrey@shestakovyachtsales.com

Web: shestakovyachtsales.com

Телефоны

Краснодарский край: **+7(918)465-66-44**

США, Майами, Флорида: **+1(954)274-4435**

Время работы

Понедельник – Суббота: **9:00 - 21:00**
EDT

Воскресенье: **Закрито**

Адрес



Harbour Towne Marina, 850 NE 3rd St,
STE 213, Dania, FL 33004