

SANDMAN II — OFFSHORE YACHTS



Builder: OFFSHORE YACHTS

LOA: 62' 0" (18.90m)

Year Built: 2000

Beam: 16' 6" (5.03m)

Model: Motor Yacht

Price: PRICE ON APPLICATION

Location: United States

Our experienced yacht broker, Andrey Shestakov, will help you choose and buy a yacht that best suits your needs **Sandman II — OFFSHORE YACHTS** from our catalogue. Presently, at Shestakov Yacht Sales Inc., we have a wide variety of yachts available on our sale's list. We also work in close contact with all the big yacht manufacturers from all over the world.

If you would like to buy a yacht **Sandman II — OFFSHORE YACHTS** or would like help answering any questions concerning purchasing, selling or chartering a yacht, please call **+1(954)274-4435**

TABLE OF CONTENTS

TABLE OF CONTENTS	2
SPECIFICATIONS	4
Overview	4
Basic Information	4
Dimensions	4
Speed, Capacities and Weight	4
Accommodations	4
Hull and Deck Information	5
Engine Information	5
DETAILED INFORMATION	6
Upgrades and Repairs the Last 24-Months	6
Vessel Walkthrough	6
Deck Equipment	7
Swim Platform	7
Aft Deck/Cockpit	7
Flybridge	7
Tender	8
Engine / Mechanical	8
Electrical Equipment	9
Pilothouse	9
Pilothouse Electronics	9
Salon	10
Galley	10
Master Stateroom	10
Master Head	10
Companionway, Forward	11
Guest Stateroom, Forward	11
Guest Stateroom, Port	11

Guest Head	11
Foyer to Master Stateroom/Laundry	11
Exclusions	12
Exclusions	12
Disclaimer	12
PHOTOS	13
CONTACTS	20
Contact details	20
Telephones	20
Office hours	20
Address	20

SPECIFICATIONS

Overview

2001 model Offshore 62 Pilothouse meticulously maintained and extensively outfitted by her knowledgeable owners.

-JOYSTICK DOCKING

-UPDATED SIMRAD ELECTRONICS

WILL ACCEPT CLEAN TRADES!

Basic Information

Category: Motor Yacht

Sub Category: Pilothouse

Model Year: 2001

Year Built: 2000

Refit Year: 2018

Country: United States

Dimensions

LOA: 62' 0" (18.90m)

Beam: 16' 6" (5.03m)

Speed, Capacities and Weight

Displacement: 70000 Pounds

Water Capacity: 275 Gallons

Holding Tank: 85 Gallons

Fuel Capacity: 1125 Gallons

Accommodations

Total Cabins: 3

Hull and Deck Information

Hull Material: Fiberglass

Exterior Designer: William Crealock

Engine Information

Engines: 2

Manufacturer: Caterpillar

Model: 3406E

Engine Type: Inboard

Fuel Type: Diesel

DETAILED INFORMATION

Upgrades and Repairs the Last 24-Months

New Hidden full-size side-by-side Whirlpool washer & dryer 21 new Lifeline batteries New EZ2CY bridge enclosure 2000 hour service new belts, hoses and clamps Turbos an heat exchangers serviced New stainless anchor New scuba compressor New MarQuipt hoop rails New MarQuipt fender holders New 70 HP Yamaha tender motor New tender gauges, steering, GPS and radio New Stidd helm chair New KVH TV, Data and cellphone 3 new HD televisions All antennas replaced 16 New salon chairs New Frigibar on fly bridge New ice maker flybridge Replaced all lights to LED All new mattresses and bedding New teak tabletop on flybridge 6 Sonos units New Blu-ray player New Devon surround system Top stripes and boot stripes all repainted Bottom sanded primed and painted Main engines and gensets serviced Stabilizers serviced and upgraded to latest system New carpet and sound down in salon New salon upholstery New cooktop New flybridge upholstery New tender interior Water maker pump replaced and water maker service New AC and DC fresh water pumps Rebuilt steering rams Exhaust rewarded and serviced Thru hulls replaced with new ball valves New throttles and joystick controls all stations New Cat displays New 23 HP bow thruster Reupholstered flybridge Stidd chairs New Canvas Full Davit service Tides shaft seals replaced with two spares each side 5 Underwater lights Wine keeper in helm Two sun flies with poles New Textilene over helm and cockpit FLIR M series 640k- \$14K New Aegean router and Wi-Fi Phantom screens

Vessel Walkthrough

This popular pilothouse motoryacht was designed with easy operation by her owners in mind: with optimal livability features and an extremely user-friendly deck layout. The swim platform via the transom gate or access doors at port & starboard midship or at the pilothouse offer numerous boarding locations. The aft deck is equipped with a docking station, large storage lazarette with custom power hatch, engine room access, transom gate door to large swim step, grill and lots of storage. Her covered walkaround decks have high bulwarks and lead to the foredeck with a built-in bench seat. Slight prop tunnels provide 5' draft combined with a lengthened keel which offers extra protection for the props. Double sliding doors from the aft deck provide access to the salon and the open, fully-equipped galley. Up and forward, the pilothouse offers complete 360-degree visibility, full instrumentation and STIDD helm seat, and easy access to the side decks through port and starboard sliding doors with screens. There is additional locker space, refrigeration and dinette area. A private staircase midship leads to the full-beam master stateroom with custom king-size berth. There is a foyer before the master stateroom with integrated full-size washer & dryer units. The two guest staterooms and guest head are forward and down a starboard-side stairway at the pilothouse. An internal 5-step stairwell from the pilothouse leads to the large flybridge with hardtop, full helm station, companion seat, "L"-settee with Hi-Lo tables, additional freezer, boat deck tender, access hatch and ladder to the aft deck.

Deck Equipment

• Boarding gates, port & starboard • Raised bulwarks 30" high w/stainless steel rail • Side decks covered w/overhangs w/overhead courtesy lights • Stainless steel bow rail 1" x 27" high • Bow pulpit w/dual anchor chutes • Windlass/24V Maxwell 3500 w/chain - up & down foot controls and bridge control • Chain approx. 200' x 3/8" w/45 plow anchor & Fortress anchor and rode • Stainless steel flag staff holder w/teak flagstaff • (2) 13" stainless steel cleats w/P & S chocks • Fresh & salt water washdowns • Built-in bench seat w/ storage below, cushions & cover • Forward stateroom escape hatch • Pantographic pilothouse doors w/retractable screens, port & starboard • Pilothouse black Textilene windshield cover • (3) Pilothouse 27" windshield wipers w/washer • Head ventilating hatches, port & starboard • Holding tank deck discharge fitting

Swim Platform

• 4' 6" fiberglass integrated swim platform w/(2) access hatches & storage below • Hidden drop down 3-step stainless steel swim ladder • (2) stainless steel hoop rails • 12V LED transom underwater light

Aft Deck/Cockpit

• Transom door • Sea Stair 7-step x 21" wide w/handrail & stowage brackets • (2) step removable port & starboard for cockpit boarding • Raised bulwarks 32" w/teak cap rail high gloss varnished w/covers • Boat deck overhang w/courtesy lights & built-in transom Quartz lights • (7) step stainless ladder to bridge deck w/fiberglass step treads • Cockpit controls w/hydraulic clutch & throttles, bow thruster control, engine stops w/storage • below & cover • Cabinet (built-in) to port w/hot & cold faucet & sprayer • Miele electric stainless-steel grill (built-in) w/lid & storage below • Fresh & sea water washdowns • (2) flush deck storage lockers • Electric opener on aft deck hatch to steering & storage lazarette • Overhead aft deck stereo speakers • Cablemaster w/75' cord & remote control • Access hatch to engine room • All decks non-skid fiberglass • (2) flush rod holders in covering boards, port & stbd • White Textilene sunshade, stern • High gloss varnished teak covering boards w/covers

Flybridge

• Fiberglass hardtop • Fiberglass radar arch w/courtesy lights/boat deck LED floodlights • Matched KVH dome (dummy for aesthetic purpose only) • Lexan Venture style windshield w/stainless frame • Forward EZ2CY enclosure • "L" settee w/ storage below, cushions, & cover • (2) Hi-Lo cocktail tables • Stidd helm & companion seats w/cushions, cover & footrest • 26" Stainless destroyer style wheel • Starboard cabinet w/cushions & cover, houses under-counter 12V refrigerator/freezer • Ritchie 4" magnetic compass • Searchlight / ACR • Chart plotter/Furuno 12" NavNet 3D • Furuno GPS GP330 w/Waas • Autopilot/handheld Robertson JP 21 • ICOM VHF ICM 604, new 12/2009 w/remote mic • Depth finder/Raytheon ST60 digital • 15" flat screen

monitor w/CCTV monitor, radar, color • Depth sounder • Bow thruster control • Trim tabs/Bennett • Hynautic clutch & throttle • Triple trumpet Buell horns w/air compressor • Rudder angle indicator VDO • Helm station cover • Ships Intercom • EPIRB SmartFind 406 GPS • Chart locker w/plexiglass lid 19" x 22" • MarQuipt davit 1,000 lbs. w/hydraulic boom, manual • Rotation 4' extension suitable for lifting 600 lbs. 24" life ring • Life raft - Revere Elite 6-man canister w/cradle, re-certified 1/24/2013 (approximately 15 hours) • (3) MarQuipt fender racks & fenders • Teak flagstaff holder • 32" x 22" access hatch from aft deck w/Lexan lid & SS ladder • Access door from pilothouse to flybridge 41" x 23" w/gas shock

Tender

• 14' 2001 Center Console Nautica RIB hard bottom inflatable w/Yamaha 50hp 4-stroke electric start w/power trim & tilt, Dolfin • VHF Standard Horizon Eclipse w/laydown 4' fiberglass antenna • Lowrance depth finder digital 3500 • Ritchie 2-1/2" magnetic compass • Speedometer • Fuel gauge • Tachometer • Navigation lights • Auto/manual bilge pump • Gasoline fume detector Xintex • 11" stainless steel steering wheel w/tilt • (2) 4" stainless steel pop-up cleats • (3) 5" stainless steel flat top cleats • Fuel capacity 35-gal w/water separator filter 12V battery w/battery shut-off switch • Freshwater tank w/12V pump • Bow seat w/cushion • Center console w/Lexan windscreen & grabrail Center seat w/cushion • Aft helm/bench seat w/backrest • Cover, deck chocks & tie downs

Engine / Mechanical

Twin Caterpillar 3406E 800hp each w/air seps, engine room start/stops w/hour meter Joystick docking Headroom 5' Bow Thruster, Wesmar 24V 13" dual prop, pilothouse, flybridge, cockpit controls Glendinning engine synchronizer Gear ZF model IRM 350 A.1 2.077:1 ratio 12V auto oil change system, Reverso main engines, gears and generators Dual Racor 1000 water separator fuel filters w/vacuum gauges Supply & return fuel tanks manifold w/sight gauge Fuel Tanks: 350 gal. each saddle tanks, 300 gal. forward engine room, 125 gal. additional stainless fuel tank in lazarette, aft Manual engine fuel prime pumps Aft storage lazarette hatch w/power hydraulic ram w/remote control Hynautic clutch & throttle controls, pilothouse, flybridge, cockpit Marine Air Air Conditioning, (5) units w/interior SMX digital thermostat controls, all a/c discharges out transom Air supply port cabin side w/Delta T intake blower Shafts 2-3/4" Aqua Met 22 stainless steel, port & starboard Dripless shaft seals strong w/cross-over cooling and spare seal Heavy duty full-length stainless-steel engine beds Engine motor mounts w/rubber isolation mounts Overhead sound insulation Overhead removable access hatches CCTV cameras fore & aft 10V & 12V overhead lighting Main engine room access from cockpit/aft deck w/watertight door Emergency main salon escape hatch w/gas shock Durable easy-clean vinyl flooring hatches for easy bilge access All seacocks & sea strainers visible w/easy access Fire Boy Halon Fire system, manual/automatic Props: 4-blade 33" x 33" x 2-3/4" bore Bilge pumps: (6) auto/manual, (1) sump pump, (1) hand operated bilge pump High water bilge alarm Water System: dockside fitting w/pressure valve, 20 gal. Quick Recovery hot water heater, 110V Head Hunter MachV pump

w/accumulator tank, 24V back-up freshwater pump, water tanks - (1) 125 gal. s/s and (1) 150 gal. frpWatermaker, 1300 GPD w/auto flushBarniclean Hull Protection System

Electrical Equipment

- Generator 12kW Northern Lights (#1 Port) - 1800 RPM's, approximately 2,000 hours, soft sound shield w/engine room start/stop and remote, pilothouse start/stop w/gauge package, rubber isolation motor mounts, Racor 500 fuel/water separator filter w/vacuum gauge, transom exhaust discharge w/Aqua Lift muffler, 1,600 hrs. as of 15 Feb 2016 • Generator 16kW Northern Lights (#2 Starboard) - 1800 RPM's, approximately 1,850 hours, soft sound shield, engine room start & stop and remote, pilothouse start/stop w/gauge package, rubber isolation motor mounts, Racor 500 fuel/water separator filter w/vacuum gauge, transom exhaust discharge w/Aqua Lift muffler, 1,593 hrs. as of 15 Feb 2016 • Generator battery shut-off switches w/battery parallel • Main engine battery shut-off switches w/battery parallel • (2) 8D gel cells w/battery boxes & lids, port & main gen start • (2) 8D gel cells w/battery boxes & lids, stb & main gen start • Battery charger, engine & bow thruster, Mastervolt 115/230V, 24V charger • Mastervolt 12V charger for generator batteries • (2) Inverter/Prosine w/charger 3000 watt & 1,000 watt for house batteries • (8) 6V gel batteries for inverter • CableMaster Glendinning 50-amp w/75' cord w/ (2) hand held remotes Transom – single 50amp inlet w/50' x 50-amp cord (1) • Bow electrical inlets (2) 50-amp • (1) approx. 10' x 50-amp extension electrical cable

Pilothouse

- Headroom 6'6" • Traditional teak & holly sole w/accent oriental area rugs • Pilothouse doors w/retractable screens, port & starboard • Helm station on centerline w/STIDD helm seat • Windshield w/black Textilene shade cover • Large eye-level port & starboard windows w/privacy shades • Overhead w/halogen down lights on dimmers • (3) overhead ventilation hatches, teak framed w/screens • Flush mounted 12V/125V/250V electrical breaker panels • Built-in "L" settee w/storage below and Hi-Lo cocktail/dining table • Aft bulkhead built-in book shelf w/sea rail and storage cabinet • Cabinet to starboard w/built-in Subzero refrigerator under counter w/matching teak • face panel - chart & ships manual storage • Internal 5-step stairwell to flybridge • Built-in vacuum cleaner w/30' hose

Pilothouse Electronics

- (5) SIMRAD 000-13236-001 NSS16 evo3 16" Chartplotters/Fishfinders MFD's (3 Pilothouse, 2 flybridge) • (2) Simrad 000-13233-001 NSS7 evo3 GPS's with Insight charts, (1 Pilothouse, 1 Flybridge) • Simrad Halo-6 Pulse Compression Radar W/6' Antenna, Ri-12 Interface Module & 20m Cable • Simrad SIM-000-10453-001 HS70 GPS Satellite Compass • Simrad Ap48 Autopilot Control Head W/Rotary Knob • (2) Autopilots (1 Pilothouse, 1 Flybridge) • FLIR® 432-0003-64-00 - M-Series M625S Standard Image Thermal Camera with Joystick Control Unit (both stations) • Simrad 000-13285-001 IS42 Digital Display (2 Pilothouse, 2 Flybridge) • Maertron

system • Sirius sat weather and radio

Salon

• Headroom 6' 9" • Sliding double entry doors from cockpit • Sliding teak-framed screen doors, interior • U-settee (built-in) w/storage below & reading lights • Hi-Lo high gloss teak drop-leaf table • (2) barrel chairs w/pull-out footrests and storage in footrests • Entertainment Center: systems integrated Niles SI-1230 amplifier, DSS Receiver Sony, • DirecTV, Yamaha DVD/CD player, Yamaha AM/FM Stereo receiver • Panasonic TV 31" flat screen HDTV w/DSS receiver to stbd • Large tinted windows w/Lambrequins and privacy shades • Aft bulkhead sliding window w/teak framed screen • Upholstered valances w/indirect accent rope lighting • Storage cabinet w/tambour sliding doors, aft & starboard • Buffet w/matching granite countertop, starboard of galley • Storage below w/pull-out pantry door shelf • Overhead w/halogen down lights on dimmer switch • Overhead surround sound speakers • Air conditioning controls, digital • Carpeted sole w/carpet runner

Galley

• GE Profile Refrigerator/freezer double door, 22 cubic ft. w/ice & water door dispensers • Refrigerator/freezer matching teak face panel • Kenyon stove with 4-burner ceramic electric cooktop • GE oven • Panasonic microwave overhead (built-in) • U-shaped granite countertop w/backsplash • Double stainless-steel sink w/garbage disposal & soap dispenser • Single lever faucet w/pull-out sprayer • GE Custom dishwasher • Plentiful storage, over & under countertops • Overhead w/halogen down lights on dimmer • Teak & holly sole

Master Stateroom

• Teak sliding pocket entry door • Custom King-size berth athwartship w/custom innerspring mattress w/storage drawers below • Night stands, fore & aft • Reading lamps, 110V • Opening hinged headboard w/cedar lined storage locker • Wall coverings and traditional teak cabinetry • Mirrored bulkhead, fore & aft • Teak dressers (built-in) w/Birdseye maple counter tops, fore & aft • His & Hers Hanging lockers, cedar-lined • Bookcase (built-in) • Sharp 15" flat screen TV (built-in) w/remote control • Telephone jack • Overhead speakers w/sound system selector panel • Overhead halogen lighting on dimmers • (2) opening port lights w/screens and privacy drapes • Air conditioning digital thermostat control • Carpeted sole

Master Head

• En Suite private head w/access through sliding teak pocket door • Stall shower w/overhead light, acrylic bi-fold tinted door • Vanity w/granite counter top, sink w/designer single lever faucet • Under counter storage • Mirrored medicine cabinet • Head Hunter freshwater head • Air

conditioning duct • Exhaust fan • Overhead w/halogen down lighting on dimmer switch • Opening port light w/privacy curtain • Birds-eye maple paneling • Traditional teak accent cabinetry • Teak & holly sole

Companionway, Forward

• Access to forward stateroom, port stateroom and shared guest head • Down circular stairwell from pilothouse w/courtesy lighting and teak grab rails • Wall covering accented by traditional teak joinery work • Carpeted sole • Overhead halogen lighting

Guest Stateroom, Forward

• "V" berth arrangement (optional) w/center insert pad & drawers below • Reading lamps • Panasonic 14" TV w/remote control, TV w/independent DSS receiver • Overhead speakers • Sound system selector panel • 110V outlet • Telephone jack • Hanging lockers, cedar-lined, port & stbd • Traditional blend of wall coverings and teak joinery work • Headliner w/halogen down lights on dimmer switch • Port & starboard opening port lights w/screens & privacy curtains • Carpeted sole • Privacy door • Chain locker access • Overhead escape hatch w/screen

Guest Stateroom, Port

• Upper & lower berths, 6' 10" length • Nightstand w/storage below & birds-eye maple top wall mirror w/teak frame above • Reading lamps • Hanging locker cedar-lined • Built-in overhead storage lockers • Overhead w/halogen down lights on dimmer switch • Opening overhead ventilation hatch w/screen • Opening port light w/privacy drapes • 110V outlet w/teak frame • Carpeted sole • Teak sliding pocket privacy door

Guest Head

• Located to starboard, shared by forward guest staterooms • Stall shower • Head Hunter freshwater jet head • Mirrored teak framed medicine cabinet • Vanity w/granite counter top, sink and designer single lever • faucet • Satin finished birds eye maple walls w/teak accent joiner work • Overhead w/halogen down lighting on dimmer switch • Air conditioning duct • Exhaust fan • Opening port light • Overhead opening ventilation hatch • Teak & holly sole • Privacy door

Foyer to Master Stateroom/Laundry

• Access is down a circular stairwell from forward & starboard of salon • Hidden full-size side-by-side Whirlpool washer & dryer • Automatic courtesy lights on cabinet doors for washer & dryer • Storage w/sea rails for laundry supplies • Storage lockers below

Exclusions

Owners' personal belongings. A complete list will be provided upon request.

Exclusions

Owner's personal belongings.

Disclaimer

The Company offers the details of this vessel or yacht in good faith but cannot guarantee or warrant the accuracy of this information nor warrant the condition of the vessel. A buyer should instruct his representatives, agents, or his surveyors, to investigate such details as the buyer desires validated. This vessel or yacht is offered subject to prior sale, price change, or withdrawal without notice.

PHOTOS

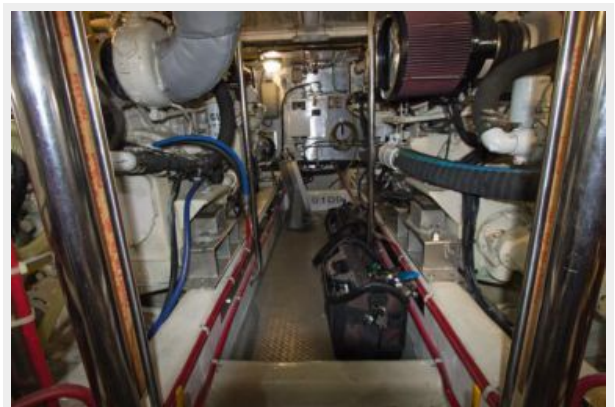
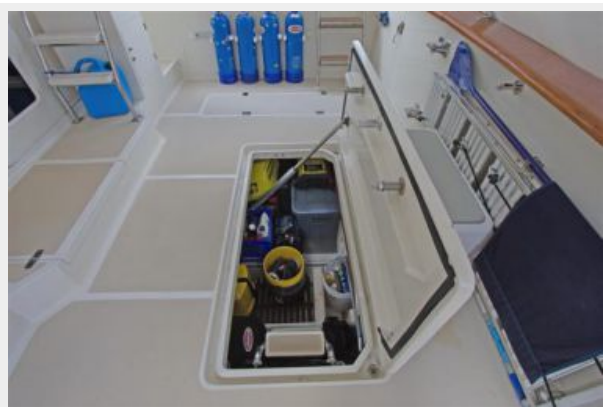














CONTACTS

Andrey Shestakov, leading yacht broker of the sales department of Shestakov Yacht Sales Inc. Shestakov Yacht Sales Inc., the official representative of the Miami/Fort Lauderdale FL headquarters.

Contact details

Email: andrey@shestakovyachtsales.com

Web: shestakovyachtsales.com/en/

Telephones

USA: +1(954)274-4435

Office hours

Monday – Saturday: **9:00 - 21:00** EDT

Sunday: **closed**

Address



Harbour Towne Marina, 850 NE 3rd St,
STE 213, Dania, FL 33004