

METEOR — CUSTOM BUILT



Судостроитель: CUSTOM BUILT

Год постройки: 2018

Модель: Мега-яхта

Цена: **ЦЕНА ЯХТЫ ПО ЗАПРОСУ**

Местонахождение: Turkey

Длина общая: 152' 1" (46.35m)

Ширина: 29' 5" (8.95m)

Мин. осадка: 9' 0" (2.75m)

Крейс. скорость: 12 Kts. (14 MPH)

Макс. скорость: 16 Kts. (18 MPH)

Купить **Meteor — CUSTOM BUILT** а также выбрать подходящую вам яхту из нашего каталога яхт вам поможет опытный яхтенный брокер Андрей Шестаков. На сегодняшний день компания **Shestakov Yacht Sales Inc.** имеет большое количество яхт в собственном списке продаж, а также тесно сотрудничает со всеми крупными яхтенными производителями по всему миру.

Для того чтобы купить яхту **Meteor — CUSTOM BUILT** а также проконсультироваться по любому вопросу связанному с покупкой, продажей, чартером яхт позвоните по телефону **+7(918)465-66-44**.

ОГЛАВЛЕНИЕ

ОГЛАВЛЕНИЕ	2
ХАРАКТЕРИСТИКИ	4
Обзор	4
Основная информация	4
Размеры	4
Скорость, вместимость и масса	4
Размещение	5
Корпус и палуба	5
Информация о двигателе	5
ПОДРОБНОЕ ОПИСАНИЕ	6
Accommodations	6
Mechanical	6
Electrical Equipment	7
Electronics	7
Control and monitoring systems	7
Entertainment	8
Airconditioning system	8
Tank capacities	9
Deck Equipment	9
Construction	9
Исключения	9
Отказ от ответственности	9
ФОТОГРАФИИ	10
КОНТАКТЫ	12
Контактная информация	12
Телефоны	12
Время работы	12
Адрес	12

ХАРАКТЕРИСТИКИ

Обзор

Meteor has just been launched (summer 2018) and is now available for sale. Interior has lots of loose furniture and has not been fully decorated so that new owner can still give his own twist and identity to this recently delivered yacht. With RINA C and MCA compliant, 10 guests and great accomodation for up to 9 crew she would also make a great charter yacht. The yacht encompasses a steel hull with three decks and aluminum superstructure. Twin Cummins provide 12 knots cruising speed, 16 knots max. Please contact us for further information.

Основная информация

Тип судна: Мега-яхта

Модельный год: 2018

Год постройки: 2018

Страна: Turkey

Размеры

Длина общая: 152' 1" (46.35m)

Длина по ватерлинии: 146' 6" (44.65m)

Ширина: 29' 5" (8.95m)

Мин. осадка: 9' 0" (2.75m)

Скорость, вместимость и масса

Крейс. скорость: 12 Kts. (14 MPH)

Дальность на крейсерской скорости:
4800

Макс. скорость: 16 Kts. (18 MPH)

Водоизмещение: 970033.9528 Pounds

Вместимость воды: 3917.935703212
Gallons

Вместимость сточного бака:
3380.345577392 Gallons

Объем топливного бака:
14815.032848212 Gallons

Размещение

Всего кают: 5

Всего коек: 10

Спальные места: 10

Всего ком. состава: 6

Каюта капитана: Да

Каюты экипажа: 5

Койки экипажа: 9

Спальных мест экипажа: 9

Комм. состав экипажа: 5

Корпус и палуба

Материал корпуса: Steel

Материал палубы: Steel

Комплектация корпуса: Round Bilged
Displacement

Цвет корпуса: White

Отделка корпуса: Steel

Информация о двигателе

Двигатели: 2

Производитель: Cummins

Модель: KTA38-M2

Тип двигателя: Inboard

Тип топлива: Diesel

ПОДРОБНОЕ ОПИСАНИЕ

Accommodations

Meteor is a trideck motoryacht. On the maindeck we find a large aftdeck and salon, both with large and comfortable seating and dining areas. A large galley and crew area on portside forward of the salon and a corridor with staircases to lower- and upperdeck on starboard. The huge mastersuite is forward on the maindeck and includes a study, bedroom with kingsize bed, walkin closet and full bathroom ensuite. The lowerdeck offers four very comfortable guestcabins, all with bathroom ensuite. Forward on the lowerdeck but separated from the guestquarters are four crewcabins. The upperdeck features a huge skylounge, a very comfortable captain's cabin and the wheelhouse. Floors – teak parque, covered n teak ol & carpet Ceilings – whte lacquer Walls – veneer varnsh, lacquer and fabrц Furniture – veneer & lacquer Trim – teak Bathroom counters – Neolith Bathroom showers – neolith Lighting – bcm led lghtng 230V

Mechanical

Propulsion system: Engines – Cummins kta38-m2 1200bhp @ 1800 rpm Gearbox – zf w3355 (4:1) with trolling valve & trailing pump Gas throttle – zf 4 stations, wheelhouse + 2 wng stations + engine room Flexible coupling – rubber desgn erd 110sa Thrust bearing – rubber desgn tb04 Propeller shaft – aquamet, 120mm diameter Shaft seal – elche radce Sterntube – steel od 244mm Shaft bearings – ntrle rubber bearings Shaft brackets – steel v-bracket Propellers – mbral fixed ptch 63” diameter sp marne Exhaust type – wet exhaust with bypass system Exhaust hoses – trdent or scamo Silencers – centek grp underwater muffler & seperators for gensets Steering: Steering system – marsl electro-hydraulic system Rudder – 2 x steel sem spade rudders Bow thruster – trac 24”, 125hp hydraulic system Stabilizer – trac 370 zero speed 4 wnglets Electric motor – 15kW ac motor to drive pto when engine s not running Fuel system: Fuel transfer – gannesch ACB 331/B B 230/400V 50Hz T 1,5kW Fuel filter – separ Piping/valve material – 304 stanless steel Valves – electronic valves n transfer system Fuel fltraton – alfa laval mb303 230V 50hz Lube ol system: Lube ol pump - gannesch FQ 15 230/400V, 50Hz WITH 2 INLET + 7 OUTLETS Sludge system: Transfer pump – gannesch FQ 15 230/400V, 50Hz WITH 2 INLET + 7 OUTLETS Fresh water system: Hydrophore – gannesch 2 JET 518 B EL/PUMPS C.E. 24V + 2307400v 50hz Water maker – 2 x hro horizon seafar 1800-2, 284ltr/hr, 380v, 2.3kW Boiler – 2 x gannesch BOILER 200 LT 230/400V T 3+3kW INOX Hot water circulation pump – gannesch Z30 TOP1801-1/4" 230/400V T 50Hz Piping/valve material – ppp-r Dirty water system: Macerator pumps: Black water – gannesch BMA-S 32/125A1 V230/400 3Ph 50HZ Grey water – gannesch MVI80 230/400V TR. 50Hz 1.5kW Tank wash pump – gannesch ACB 331/B B 230/400V 50Hz T 1,5kW Sewage treatment – hamann hlcp 02 slm 5200ltr/day 380V, 3kW Multphase pump – hamann 1.5kW Sludge pump – hamann 0.75kW Effluent pump – 0.75kW Toilets – 11 x tecma breeze, soft close, 230v 0.7kW Piping/valve material – pvc grp Bilge/Fire system: Bilge pump – gannesch ACB 631/B 400/690V 3Ph 50Hz 9,2kW 1450rpm Fre pump - gannesch ACB 631/B 400/690V 3Ph 50Hz 9,2kW 1450rpm EMG. Fire pump – v2xrd desel pump 3kW Automatic bilge pumps – rule Piping/valve material – underwater CuNiFe, elsewhere 316 stanless steel Valves –

electronic valves in bilge system Raw water cooling system: Piping – CuNiFe Scupper system:
 Piping – 316L stainless steel DN65 SCH80 Deck wash system: Pump – gannesch WPS IDRO
 ECOJET 2 BB 230/400V T 50Hz water pressure pump will supply fresh water at several outlets
 Fixed fire fighting system: System type – ultrafog (in engine room as well)

Electrical Equipment

Onboard electricity – 380v,230v,24v,12v Generators – 2 x kohler, 80kw @ 1500rpm 3 phase
 Night generator – 1 x kohler, 50kw @ 1500rpm 3 phase Batteries: Engine starter batteries – 8 x
 mastervolt agm 160ah 24V Generator starter batteries – 4 x mastervolt agm 130ah 24V Night
 generator starter batteries – 2 x mastervolt agm 130ah 24V Service batteries – 4 x mastervolt mvg
 200ah 24V Emergency batteries – 4 x mastervolt mvg 200ah 12V VHF batteries – 4 x mastervolt
 mvg 200ah 12V Chargers: Engine starter – 2 x mastervolt mass 24/50a 220V Generator starter –
 3 x mastervolt mass 24/25a 220V Service – mastervolt mass 24/75a 220V Emergency –
 mastervolt mass 24/75a 220V VHF – mastervolt mass 24/50a 220V Frequency convertor – atlas
 90 or 90kVA Shorpower spa Cathodic protection – cathelco ccp 20a mntek, current density
 35mA/m² Antifouling system – cathelco antifouling system

Electronics

Nav station: wheelhouse – smrad argus 19" approved display gps – smrad mx6xx Echosounder –
 skpper gds101 Speedlog – skpper eml224 Autoplot system – smrad ap70 mo s Inmarsat – salor
 6110 mn-c gmdss system Mf/hf – salor 6000series 150Wdsc class a Printer for gmdss – salor
 h1252b/tt-3608a Alarm panel – salor 6101 Vhf dsc: Wheelhouse – salor 6000 series class a
 handheld – 3 x simrad axis50 gmdss approved Weather station – armar 150wx Loudhailer –
 smrad Watch alarm system – Raytheon bnwas AIS – smrad mx535 class a SART – 2 x smrad
 sa70 sart EPIRB – smrad eg70 auto gps eprb Radar 1 – smrad argus 12u6xp 12kW Radar 2 –
 smrad broadband 4g radar closed dome Navtex – jrc ncr333 Overhead magnetic compass –
 cassen & plath type 21 Gyro compass – smradgc80 exp Gyro repeater analogue – smrad hr80
 Gyro repeater digital – smrad dr76 Cctv system – 1 x camera in engine room 1 looking aft (cabling ready for
 more cameras) Intercom system – zentel etb-5 pack

Control and monitoring systems

1-1 fuel oil monitoring & control: Fuel oil tank level monitoring via bargraph and numeric display Fuel
 oil tank low level & high level alarms, audio & graphic alarms Alarms to be logged in the system
 Control of fuel oil transfer pump fuel filtration system and valves 1-2 fresh water monitoring &
 control: Fresh water tank level monitoring via bargraph and numeric display Fresh water tank low
 level & high level alarms, audio & graphic alarms Alarms to be logged in the system Monitoring of
 water pressure pump and system pressure 1-3 black water monitoring & control; black water tank
 level monitoring via bargraph and numeric display black water tank high level alarm, audio & graphic
 alarms macerator pump to be stopped when tank level is low control of valves to direct black water

overboard or to hamann system control of macerator pump Alarms to be logged n the system 1-4 grey water monitoring & control; grey water tank level monitoring via bargraph and numerical display grey water tank high level alarm, audio & graphic alarms macerator pump to be stopped when tank level is low control of valves to direct black water overboard or to hamann system control of macerator pump Alarms to be logged n the system 1-5 navigation/external lights monitoring & control; Non functioning navigation lights to be shown on display Alarms of navigation lights to be logged n system 1-6 bilge & fire system monitoring & control; Control of bilge & fire pump Bilge low level and high level alarms for all compartments Control of electronic valves Alarms to be logged n system 1-7 engine room pressure/temperature monitoring; Engine room pressure & temperature monitoring High temperature alarm Low pressure alarm 1-8 onboard battery monitoring; all battery groups voltage monitoring, high & low level voltage alarm all battery groups charge amp monitoring and high amp alarm all battery groups discharge monitoring high & low voltage alarm service battery life at current ah usage to be shown alarm to be logged n system 1-9 AC Volt monitoring and power management; gen1 on line gen1 off line gen2 on line gen2 on line gen 3 off line gen 3 off line shore power on line shore power off line 1-10 Alarm storage & Engineering Page; All alarm warnings to be stored for future retrieval 1-11 porthole and watertight door monitoring; 16 portholes with micro switch to be monitored open/closed position all watertight doors&hatches to be monitored open/closed position 1-12 man engines; Exhaust pressure/temperature monitoring bargraph and numerical display Exhaust high pressure/temperature alarm Alarms to be logged n system 1-13 air conditioning circulation water monitoring; Circulation water temperature & pressure monitoring Low/high temperature alarm Low high pressure alarm Alarm to be logged n system Automation panels to be placed in wheelhouse (24"), captains cabin (12"), crew mess (12"), engine room on plc panel (15")

Entertainment

Satellite TV antenna – Intellian i9W Internet antenna – intellian VSAT v80G TV's: Owners cabin – 32" (ceiling lift) Guest cabin 1 – 32" (ceiling lift) Guest cabin 2 – 32" (ceiling lift) Guest cabin 3 – 32" (ceiling lift) Guest cabin 4 – 32" (ceiling lift) Crew mess – 32" (fixed) Upper saloon – 75" (fixed) Sun deck – 65" (ceiling lift) Decoders – 10 x next hd satellite receiver

Airconditioning system

Brand – Crusar Chiller – 6 x two 72000btu/hr, total 432000btu/hr Cooling 9A, heating 11.7a Fancoils: Guest cabin 1 – at 12hvz, 12000btu/hr, 0.7a Guest cabin 2 – at 12hvz, 12000btu/hr, 0.7a Guest cabin 3 – at 12hvz, 12000btu/hr, 0.7a Guest cabin 4 – at 12hvz, 12000btu/hr, 0.7a Crew mess – at 18hvz, 18000btu/hr, 1a laundry – at 12hvz, 12000btu/hr, 0.7a crew 1 – at 9hvz, 9000btu/hr, 0.7a crew 2 – at 9hvz, 9000btu/hr, 0.7a crew 3 – at 9hvz, 9000btu/hr, 0.7a crew 4 – at 9hvz, 9000btu/hr, 0.7a master cabin – 3 x at 18hvz, 54000btu/hr, 3a galley – 2 x at 18hvz, 18000btu/hr, 2a man saloon – 4 x at 24hvz, 96000btu/hr, 4a Wheelhouse – 2 x at 18hvz, 18000btu/hr, 2a Upper saloon – 4 x at 18hvz, 72000btu/hr, 3a Captains cabin – at 12hvz, 12000btu/hr, 0.7a Fresh air unit – 2 x AT24HVZ-1.5kW + at 36hvz-fc-1.5kW 84000btu/hr Sea water pump – 2 x p711380V Circulation pump – p715 3HP Digital controller kit – 23 x pltx-hvstat Er fans –

1 x gannesch ELL/AP 805/8/35° 230/400V 3Ph 50Hz 5,5kW 1450 RPM wth 24V fre damper and mst elmnator and 1 x gannesch ELL/AP 715/0-8/35° 230/400V 3Ph 50Hz 3kW 1450 RPM wth 24V fre damper and mst elmnator Lazarette fans – 2 x gannesch ELL 250/2 230/400V T wth 24V fre damper

Tank capacities

Fuel oil tanks – 56081ltr (approxmate), 7 tanks Lube ol tank – 782ltr (approxmate) 1 tank Sludge tank – 1024ltr (approxmate) 1 tank Fresh water tanks – 14813ltr (approxmate) 2 tanks Grey water tanks – 12796ltr (approxmate) 2 tanks Black water tanks – 11686ltr (approxmate) 2 tanks

Deck Equipment

Windlass – 2 x data DZC 3300 HKr-20K, max contnuous pull 3300kg Anchor – 2 x 275kg hhp, pool n Anchor Chain – 17.5mm stud link, 200m + 200m Capstan – 2 x lofrans T4000 Bollards – 316L stanless steel, custom made Fairleads – 316L stanless steel, custom made Cleats – 316L stanless steel, custom made Stanchions – 316L stanless steel Portlights – 16 x scm oblo t.s. 400mm wth storm shutter & mcro swtch Wndsheld wpers – 7 x spech heavy duty unts Passarella – opacmare transformer 3383.6 (6 steps) 5 50kg capacity Pantograph door – bofor custom Sliding salon door – 2 x bofor chrome/glass automac door wth brake

Construction

Hull construction: Shell – A grade steel Structure – A grade steel Decks – teak on top of A grade steel Superstructure construction: Shell – Alumnum 5083 H111 Structure – Alumnum 5083 H111 Decks – teak on top of alumnum Tank construction: Fuel oil tanks – a grade steel Fresh water tanks – A grade steel Grey water tanks - A grade steel coated wth nterlne Black water tanks - A grade steel coated wth nterlne

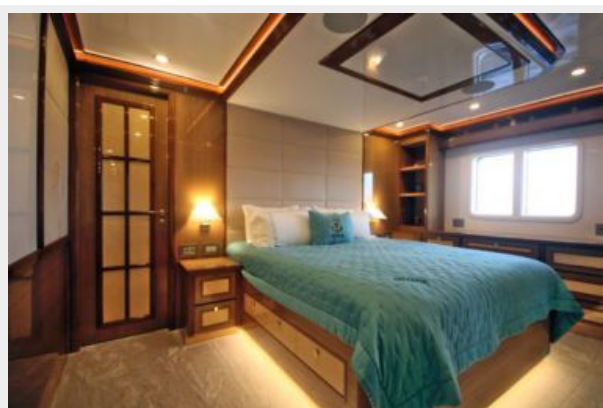
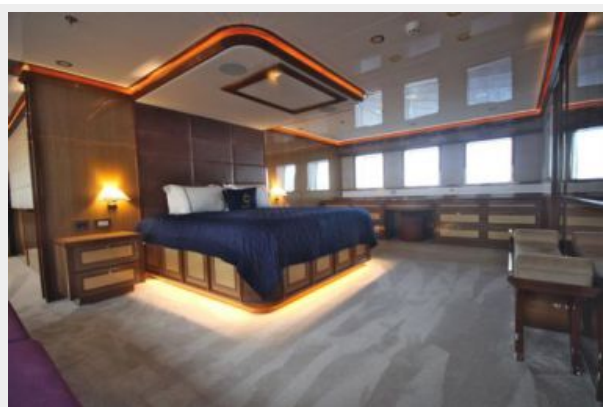
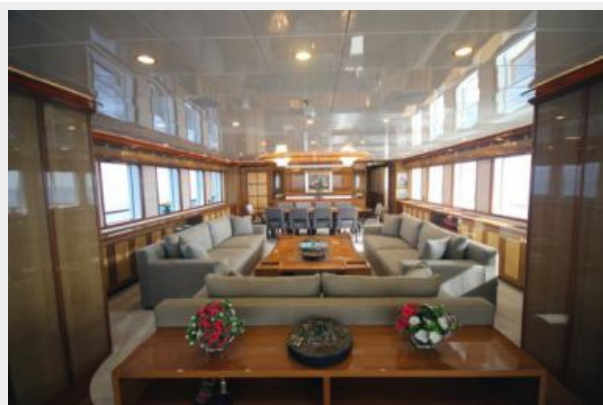
Исключения

При продаже яхты исключаются личные вещи владельца.

Отказ от ответственности

Компания предоставляет описание судна или яхты добросовестно, но не может гарантировать точность этой информации, а также не ручается за техническое состояние. Покупатель должен проинструктировать своих агентов или оценщиков исследовать представленную информацию более подробно, по собственному желанию. Продажа судна или яхты, изменение цены или снятие с продажи будет происходить без предварительного уведомления.

ФОТОГРАФИИ





КОНТАКТЫ

Андрей Шестаков (Andrey Shestakov) – ведущий яхтенный брокер отдела продаж яхт и судов компании Shestakov Yacht Sales Inc. Официальный представитель Shestakov Yacht Sales Inc. для русскоговорящих клиентов в центральном офисе компании в Майами/Форт Лодердейл/Флорида/США.

Контактная информация

Email: andrey@shestakovyachtsales.com

Web: shestakovyachtsales.com

Телефоны

Краснодарский край: **+7(918)465-66-44**

США, Майами, Флорида: **+1(954)274-4435**

Время работы

Понедельник – Суббота: **9:00 - 21:00**
EDT

Воскресенье: **Закрито**

Адрес



Harbour Towne Marina, 850 NE 3rd St,
STE 213, Dania, FL 33004