

SEA VOYAGER 143 — MAGIC YACHTS



Builder: [Magic Yachts](#)

Year Built: 2023

Model: Catamaran

Price: PRICE ON APPLICATION

Location: France

LOA: 143' 0" (43.58m)

Beam: 62' 0" (18.88m)

Min Draft: 8' 11" (2.70m)

Cruise Speed: 15 Kts. (17 MPH)

Max Speed: 18 Kts. (21 MPH)

Our experienced yacht broker, Andrey Shestakov, will help you choose and buy a yacht that best suits your needs **SEA VOYAGER 143 — Magic Yachts** from our catalogue. Presently, at **Shestakov Yacht Sales Inc.**, we have a wide variety of yachts available on our sale's list. We also work in close contact with all the big yacht manufacturers from all over the world.

If you would like to buy a yacht **SEA VOYAGER 143 — Magic Yachts** or would like help answering any questions concerning purchasing, selling or chartering a yacht, please call **+1(954)274-4435**

TABLE OF CONTENTS

TABLE OF CONTENTS	2
SPECIFICATIONS	3
Overview	3
Basic Information	3
Dimensions	3
Speed, Capacities and Weight	4
Accommodations	4
Hull and Deck Information	4
Engine Information	4
DETAILED INFORMATION	5
CONSTRUCTION	5
ENERGIES & PRODUCTION	5
VENTILATION	5
CONCEPT	5
MAIN DECK	5
FLY BRIDGE	5
THE HULLS	6
Exclusions	6
Disclaimer	6
PHOTOS	7
CONTACTS	10
Contact details	10
Telephones	10
Office hours	10
Address	10

SPECIFICATIONS

Overview

The 143-foot (43.5m) SEA VOYAGER 143 is ready for production, promising extreme seaworthiness and luxurious comfort. Her concept allows owners and guests to live on board, becoming one with the sea.

SEA VOYAGER 143 boasts incredible internal volume with an exoskeleton superstructure that provides flexible layout options and lends itself for social use; as such, she is ideal for families, entertaining or chartering. The luxury sailing yacht's main deck is divine showcasing spectacular views from expansive windows that surround. The lines between indoor and outdoor living on board are blurred.

As a new build, SEA VOYAGER 143 allows for versatility with its accommodations layout; it is able to accommodate 10 to 12 guests in five to six luxuriously appointed staterooms. Her on-deck master suite is a tranquil haven providing astounding views; it is complete with a dressing room and office. There also is a build option for the master suite to be built as two identical VIP staterooms. The luxury yacht's additional four staterooms are found below deck. Each stateroom is complete with its own en-suite bath.

SEA VOYAGER 143's hulls feature doors that open directly to the transom, right over the sea, allowing for unlimited recreational possibilities. The yacht also features a phenomenal beach area that allows for days to be spend lounging while relishing time on the water.

Basic Information

Category: Catamaran

Model Year: 2023

Year Built: 2023

Country: France

Dimensions

LOA: 143' 0" (43.58m)

Beam: 62' 0" (18.88m)

Min Draft: 8' 11" (2.70m)

Speed, Capacities and Weight

Cruise Speed: 15 Kts. (17 MPH)

Max Speed: 18 Kts. (21 MPH)

Displacement: 551155.655 Pounds

Water Capacity: 5811.785144 Gallons

Fuel Capacity: 8770.5121264 Gallons

Accommodations

Total Cabins: 6

Sleeps: 12

Total Heads: 4

Crew Sleeps: 6

Hull and Deck Information

Hull Material: Aluminum

Hull Configuration: Catamaran

Exterior Designer: Jerome VOLLET

Engine Information

Engines: 2

Manufacturer: Caterpillar

Model: 2 x 490hp Caterpillar

DETAILED INFORMATION

CONSTRUCTION

Mixed composite aluminum / fiberglass is used for the exterior skin under the water line for impact resistance, to allow cruising in high and low latitudes where ice is present. Above the water line, sandwich glass/carbon PVC, will be used for hulls, floors and bridges. Two main carbon beams connect the hulls. Secondary beams, take compressive load of masts. Hull - Aluminium (carbon option) Deck - Glass (carbon option) Mast - Aluminium (carbon option)

ENERGIES & PRODUCTION

The huge surface area of the hard top allows a solar collection network of 200m² capable of producing a significant amount of energy, complemented by photovoltaic glass windows which represent around 125m².

VENTILATION

Carbon beams are a major element of the architecture of SV143' creating an exo-skeleton. They also have the function to drive a constant air flow across SV143'.

CONCEPT

More than ever we are in a concept that wants to unite a man, a boat and the sea. "Sea-Voyager 143' ", is our multihull which open the gate to "Super Yachts" category. Designed to be in the linea of transoceanic cruises, adapted to exceptional receptions or events. We have keep our goal to build a large catamaran able to sail with realistic performances promising a speed of 15/18 nds, with the necessary comfort to a super yacht as is the SV143' that can safely sail whilst respecting the environment. To optimise the velocity of SV143, the confort of the boat under sail and facilitate beach access, we have made the choice to use the first generation of foilers

MAIN DECK

This is divided into two areas.- One as a main living space, with part taken for the bridge and navigation station.- The second aft, an independent area reserved for "Owner's cabin" of a feature of all SeaVoyager yachts. A king size bed, a desk, a bathroom, dressing room, made of this a luxurius space. The option exists for 2 equal Master cabins each with full sea view.

FLY BRIDGE

Access to the bridge is by a companionway linking the two decks. The twin Sea Voyager 143' helm station allow 360 degree vision and ease maneuverability. Aft is the beach deck where discreet sunbathing is available up to eight lounge

THE HULLS

4 further guest cabins, 2 twins cabins and 4 crews cabins, a professional galley and enough storage for round-the-world autonomy. - Anchors are fixed and stored sit in the middle line of the main deck- Vertical transom doors give direct water access for water sports and forward access to the engine rooms and galley.- 2 shell doors on port side and starboard, allow tender storage.- Tank's capacity of SV143', whatever the latitude, permit to make the round world, under sail or motor

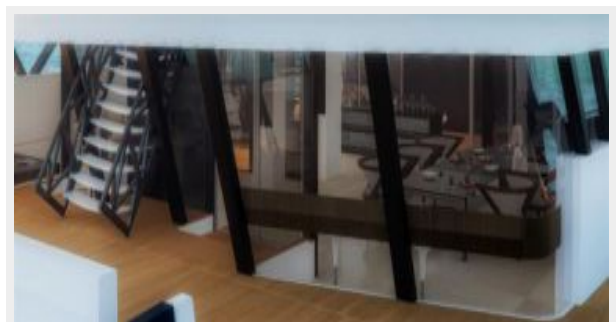
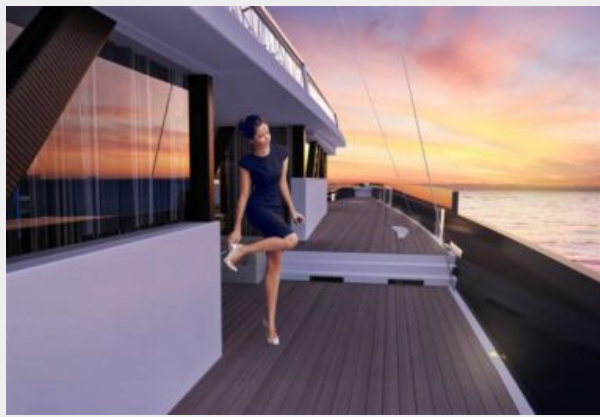
Exclusions

Owner's personal belongings.

Disclaimer

The Company offers the details of this vessel or yacht in good faith but cannot guarantee or warrant the accuracy of this information nor warrant the condition of the vessel. A buyer should instruct his representatives, agents, or his surveyors, to investigate such details as the buyer desires validated. This vessel or yacht is offered subject to prior sale, price change, or withdrawal without notice.

PHOTOS







CONTACTS

Andrey Shestakov, leading yacht broker of the sales department of Shestakov Yacht Sales Inc. Shestakov Yacht Sales Inc., the official representative of the Miami/Fort Lauderdale FL headquarters.

Contact details

Email: andrey@shestakovyachtsales.com

Web: shestakovyachtsales.com/en/

Telephones

USA: +1(954)274-4435

Office hours

Monday – Saturday: **9:00 - 21:00** EDT

Sunday: **closed**

Address



Harbour Towne Marina, 850 NE 3rd St,
STE 213, Dania, FL 33004