

PERLE NOIRE — HEESEN YACHTS



Судостроитель: HEESEN YACHTS

Год постройки: 2010

Модель: Моторная яхта

Цена: ЦЕНА ЯХТЫ ПО ЗАПРОСУ

Местонахождение: France

Длина общая: 122' 5" (37.30m)

Ширина: 24' 8" (7.50m)

Макс. осадка: 6' 3" (1.88m)

Крейс. скорость: 21 Kts. (24 MPH)

Макс. скорость: 31 Kts. (36 MPH)

Купить **PERLE NOIRE — HEESEN YACHTS** а также выбрать подходящую вам яхту из нашего каталога яхт вам поможет опытный яхтенный брокер Андрей Шестаков. На сегодняшний день компания **Shestakov Yacht Sales Inc.** имеет большое количество яхт в собственном списке продаж, а также тесно сотрудничает со всеми крупными яхтенными производителями по всему миру.

Для того чтобы купить яхту **PERLE NOIRE — HEESEN YACHTS** а также проконсультироваться по любому вопросу связанному с покупкой, продажей, чартером яхт позвоните по телефону **+7(918)465-66-44**.

ОГЛАВЛЕНИЕ

ОГЛАВЛЕНИЕ	2
ХАРАКТЕРИСТИКИ	4
Основная информация	4
Размеры	4
Скорость, вместимость и масса	4
Размещение	4
Корпус и палуба	5
Информация о двигателе	5
ПОДРОБНОЕ ОПИСАНИЕ	6
Dimensions	6
Construction	6
Classification	6
Performance	7
Machinery	7
Steering & Propulsion	7
Auxiliary Equipment	7
Tankage	7
Electrical Equipment	8
Navigation Equipment	8
Communication & Satellite	8
Entertainment Equipment	9
Domestic Appliances, Equipment and Laundry	9
Accommodations	9
Deck Equipment	10
Tenders & Toys	10
Safety & Fire Protection	10
Refit Works 2016	11
Exclusions List	11

Исключения	12
Отказ от ответственности	12
ФОТОГРАФИИ	13
КОНТАКТЫ	16
Контактная информация	16
Телефоны	16
Время работы	16
Адрес	16

ХАРАКТЕРИСТИКИ

Основная информация

Тип судна: Моторная яхта

Модельный год: 2010

Год постройки: 2010

Год обновления: 2016

Страна: France

Открытая палуба мостика: Да

Размеры

Длина общая: 122' 5" (37.30m)

Ширина: 24' 8" (7.50m)

Макс. осадка: 6' 3" (1.88m)

Скорость, вместимость и масса

Крейс. скорость: 21 Kts. (24 MPH)

Дальность на крейсерской скорости:
2000

Макс. скорость: 31 Kts. (36 MPH)

Чистый вес: 245 Pounds

Вместимость воды: 2076.39232872
Gallons

Вместимость сточного бака:
921.167945324 Gallons

Объем топливного бака: 9246.02182
Gallons

Размещение

Всего кают: 5

Спальные места: 12

Каюты экипажа: 3

Спальных мест экипажа: 6

Корпус и палуба

Материал корпуса: Aluminum

Дизайнер экстерьера: Frank Laupman

Дизайнер интерьера: Gabriel Bernardi

Информация о двигателе

Двигатели: 2

Производитель: MTU

Модель: 16V4000M90

Тип двигателя: Inboard

Тип топлива: Diesel

ПОДРОБНОЕ ОПИСАНИЕ

Dimensions

Length oa:	122'3" / 37.30m
Beam:	24'6" / 7.50m
Draft:	5" / 1.5m
Gross tonnage:	245

```
.telerik-reTable-5 { border-collapse: collapse; border: solid 0px; font-family: Tahoma; } .telerik-reTable-5 tr.telerik-reTableHeaderRow-5 { margin: 10px; padding: 10px; color: #3A4663; text-align: left; font-size: 10pt; font-style: normal; font-family: Tahoma; text-transform: capitalize; font-weight: 500; border-spacing: 10px; line-height: 11pt; vertical-align: top; } .telerik-reTable-5 td.telerik-reTableHeaderFirstCol-5 { padding: 0in 5.4pt 0in 5.4pt; color: #3a4663; } .telerik-reTable-5 td.telerik-reTableHeaderLastCol-5 { padding: 0in 5.4pt 0in 5.4pt; color: #3a4663; } .telerik-reTable-5 td.telerik-reTableHeaderOddCol-5 { padding: 0in 5.4pt 0in 5.4pt; color: #3a4663; } .telerik-reTable-5 td.telerik-reTableHeaderEvenCol-5 { padding: 0in 5.4pt 0in 5.4pt; color: #3a4663; } .telerik-reTable-5 tr.telerik-reTableOddRow-5 { color: #666666; vertical-align: top; font-size: 10pt; } .telerik-reTable-5 tr.telerik-reTableEvenRow-5 { color: #666666; vertical-align: top; font-size: 10pt; } .telerik-reTable-5 td.telerik-reTableFirstCol-5 { padding: 0in 5.4pt 0in 5.4pt; } .telerik-reTable-5 td.telerik-reTableLastCol-5 { padding: 0in 5.4pt 0in 5.4pt; } .telerik-reTable-5 td.telerik-reTableOddCol-5 { padding: 0in 5.4pt 0in 5.4pt; } .telerik-reTable-5 td.telerik-reTableEvenCol-5 { padding: 0in 5.4pt 0in 5.4pt; } .telerik-reTable-5 tr.telerik-reTableFooterRow-5 { color: #3a4663; font-weight: 500; font-size: 10pt; font-family: Tahoma; line-height: 11pt; } .telerik-reTable-5 td.telerik-reTableFooterFirstCol-5 { padding: 0in 5.4pt 0in 5.4pt; text-align: left; } .telerik-reTable-5 td.telerik-reTableFooterLastCol-5 { padding: 0in 5.4pt 0in 5.4pt; text-align: left; } .telerik-reTable-5 td.telerik-reTableFooterOddCol-5 { padding: 0in 5.4pt 0in 5.4pt; text-align: left; } .telerik-reTable-5 td.telerik-reTableFooterEvenCol-5 { padding: 0in 5.4pt 0in 5.4pt; text-align: left; }
```

Construction

Hull:	Aluminum
Superstructure:	Aluminum
Naval Architect:	Heesen
External Designer:	Frank Laupman
Internal Designer:	Gabriel Bernardi

Classification

Class:	ABS
--------	-----

MCA: Built to LY2

Performance

Maximum speed: 31 knots
Cruising speed: 21 knots
Consumption (approx.): 600 l/h @ 18 knots approx
Range: 2,300nm @ 12 knots (1651/hr)

Machinery

Engines: 2 x MTU 16V 4000 M90, 3,650hp
Engine hours: Port 2,300 / Stbd: 2,300 (Jan 2020)
Generators: 2 x Kilopak, 50kW
Generator hours: Port 9300 / Stbd: 9300 (Jan 2020)

Steering & Propulsion

Steering: Sperry Marine Systems
Propellers: Schaffran 5-blade fixed pitch
Gearbox: ZF, BW755oP 1,883 hours (Nov 2018)

Auxiliary Equipment

Bow/Stern thruster: Hydromar HBT GF CR 50/HBT GP CR5 1
Water maker: 2 x Hydro Electric Marine (HEM)
Stabilizers: Naiad trim tab underway
Fuel separator: GEA Westfalia separator
Air-conditioning: 2 x Marine Air System & fresh air system
Waste water treatment: Hamann
Toilet system: Jets Vacuumator
Boilers: 2 x Nibe

Tankage

Fuel: 9,246 g / 35,000 lts

Lubrication Oil:	188 g / 713 lts
Dirty lube oil:	188 g / 713 lts
Fresh water:	2,076 g / 7,860 lts
Grey/Black water:	921 g / 3,487 lts

Electrical Equipment

Voltage:	415v, 230v
Frequency:	50 Hz
Batteries:	24v/Ah Service marine = 600Ah Emergency batteries = 400Ah

Navigation Equipment

Magnetic compass:	Yes
AIS:	Saab R4
Log:	B&G
Depth sounder:	B&G
Autopilot:	Sperry
Radar:	Furuno FAR-2117
Electronic charter system:	Transas ECS 4000
GPS:	Saab R4
Monitors:	Flat screen 8'4" Radio Zeeland FSM 804 Sun 4 x Hatteland touch screen (bridge)
Engine and gearbox controls:	Wheelhouse and flybridge with MTU
Instrumentation system (wind, speed & direction):	B&G

Communication & Satellite

Inmarsat:	Sailor C-system H-2095C
Inmarsat F:	Nera F5, printer
Navtex:	NX-700
VHF:	2 x DSC radio
VHF hand held radio:	2 x Icom
Internet:	Pepwave 4G with 2 routers and 5 WiFi access points
Printer/fax:	HP

Entertainment Equipment

TV.DVD:	Samsung 60"
Antenna:	FMI AM/TV
Satellite:	Seatel 2498 (60cm) dish
Music system:	Control 4

Domestic Appliances, Equipment and Laundry

Refrigerator:	Yes x 3
Refrigerator:	Bar x 1, Flybridge x 2
Freezer:	Yes, tender garage
Oven:	Yes x 2
Cooktop:	Yes, 5 zones
Teppanyaki:	Yes
Microwave:	Yes
Icemaker	Yes 2 x
Dishwasher:	Miele
Washing machine:	Miele x 2
Dryer:	Miele x 2

Accommodations

Accommodation 12 guests in 5 staterooms and 6 crew in 3 cabins

The incredible elegant interior is a combination of interior design by Cootehill Bernardi and precision build standards of Heesen. Evoking the glamour of the 1930's on the Cote d'Azur, contemporary interpretations of Art Deco themes are complemented by historic details, such as the reproduction of period French light fittings. **Saloon**The main salon features a single, long port-side sofa resulting in an open-plan layout providing plenty of space for entertaining. Control 4 – 8 zone amplifiers5 x Bose speakersPanasonic Blue ray playerApple TVKartina streamingFransat decoderApple iPad control60' LG 4k TV (new)Sunfire subwoofer (new)**Dining**Control 4 – 8 zone amplifiers2 x Bose speakers**Upper Deck**Deck space on Perle Noire have been fully maximized. Stretching from the quadruple sunpad on the foredeck through the bar to a dining table for ten guests, you can enjoy an afternoon of sunbathing to drinks and alfresco dining in the evening.**Main Deck, aft**2 x Marine speakersExternal areas controlled by Apple iPad**Master Stateroom** Leather walls, wool carpeting and beautifully crafted fixed furniture in flame mahogany; the full beam master stateroom is an exceptional example of simple elegance made extraordinary by using the best materials and the best craftsmen. Positioned on the main deck, the stateroom features a full-beam bedroom, en-suite marble bath and walk-in

wardrobe. 60" LG 4K TV 5 x Bose speakers Panasonic Blue ray player Fransat decoder Sunfire Subwoofer (new) Apple TV **VIP Stateroom** Queen size berth, private marble en-suite shower room. Sharp 20" LCD LC -20shle Yamaha DVD player SDV P7, Apple TV Pioneer speakers **Guest Stateroom** Queen size berth, private marble en-suite shower room. Sharp 20" LCD LC -20shle Yamaha DVD player SDV P7, Apple TV Pioneer speakers **Guest Stateroom** Queen size berth, private marble en-suite shower room. Sharp 20" LCD LC -20shle Yamaha DVD player SDV P7, Apple TV Pioneer speakers **Guest Stateroom** Twin bunk berths, private marble en-suite shower room. Sharp 20" LCD LC -20shle Yamaha DVD player SDV P7, Apple TV Pioneer speakers **Crew Mess** 32" LCD TV, Yamaha DVD player SDV P7 2 x Pioneer speakers **Crew Accommodation** 2 x 20" LCD TV, Yamaha DVD player SDV P7 4 x Pioneer speakers TSE 1 376 **Wheelhouse** 2 x Pioneer speakers TSE 1 376, Yamaha CD/DVD player

Deck Equipment

Flybridge

Control 4 – 8 zone amplifiers 12 marine speakers (new)

Anchors & chain:	149 kg Danforth x 2 *110m/150m)
Windlass:	2 x Staalart
Passerelle:	Hydromar telescopic
Bathing ladder:	Carbon fiber
Bimini top:	2 x Gibus 4m
Stern capstans:	2 x Staalart

Tenders & Toys

Tenders:	Zodiac Deluxe 5.3 m RIB w/new pontoons
Toys:	Seadoo jetski RXP 260hp, 2 SUP boards, 2 x wakeboards
Sea Bobs:	1 x F5 Seabob - Red, 1 x F5S Seabob - Yellow
Fly Board:	1 x adapted to Jet ski
Dive equipment:	2 x full sets Scuba Pro and Bower Profi Dive compressor
Snorkel equipment:	Mares snorkeling equipment and fins

Safety & Fire Protection

EPIRB:	1 x ACR
Life rafts:	4 x 12 person w/auto hydrostatic quick release

Life rings:	4 x life saving 2 karos light and smoke signal + lines / Stainless steel brackets.
Life jackets:	15 x SOLAS adult, 6 SOLAS child, all with lights & 20 inflatable life jackets
Fire-fighting equipment:	2 x firemen outfits with MCA approved breathing apparatus
Fire detection system:	ADT fire detection system
Medical kit:	1 x MCA approved Category C 12-person kit
SART:	2 x Mcmurdo
Bilge & fire pumps:	Sterling
Searchlight:	ACR twin
Security cameras:	4 x Samsung CCTV
Ships safe:	2 x Jewel safes

Refit Works 2016

Full exterior paint job with Alexseal paint system
Full stern thruster service and replacement of all hydraulic pipes
Replacement of two Hatteland bridge navigational monitors
Replacement of one AC compressor
Full tender refurbishment including pontoon replacement and painting
1 new Seabob F5 in Ixon Red
Full paint treatment of engine room and garage bilge area
Main engine MTU and Generator maintenance work and service
New flybridge navigational equipment
Interior marble polish
Bridge leather restoration
Upgrade of AV entertainment system "Control 4"
New aft deck awning
Stainless steel handrail modifications
Jacuzzi maintenance, upgrade of lights, fittings, control pad, overflow mat and lights
New flybridge windbreak
Revision and/or replacement of all pumps and painting of all bilge plumbing in garage and engine room
Replacement of all bed linens and towels
Replacement of carpets, interior and exterior sofas

Exclusions List

Item:	Location:	Details:
Table decorations	Main salon, Master stateroom	1 or 2 small item received as gifts, bowls, wine holder
Personal items	Main salon, Master stateroom	Photos (Owner and guest with picture frames)
Clothing	Master stateroom and Guest staterooms	Owner/guests clothing in cupboards and drawers
Crew personal sports equipment	Garage	2 x road bicycles in black and white. 2 x fishing rods and reels
Crew personal clothing and belongings	Crew cabins	All item in crew cabins, clothes and personal items
All alcohol	Onboard storage	Alcohol - wine, spirits, champagne

Drone, camera, computer Bridge

Personal drone and DSLR camera and laptops

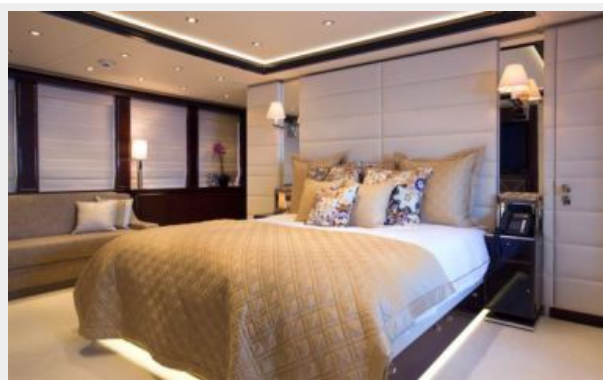
Исключения

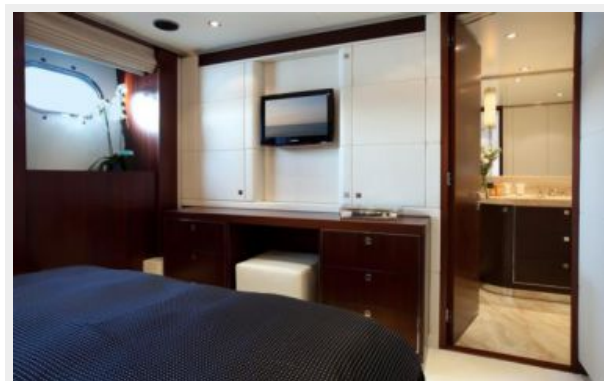
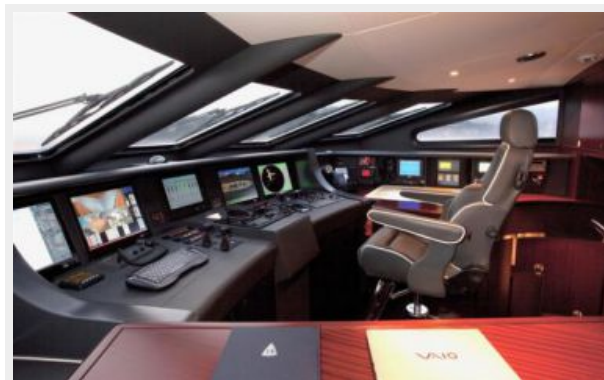
При продаже яхты исключаются личные вещи владельца.

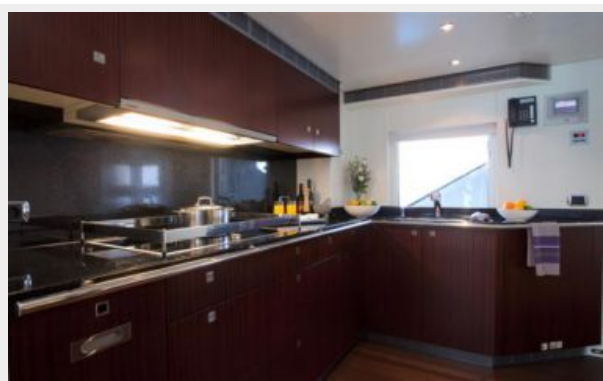
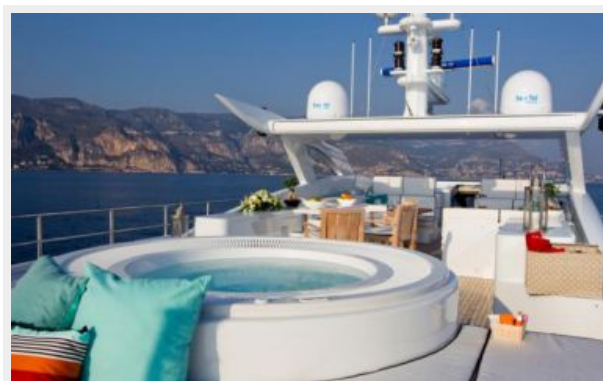
Отказ от ответственности

Компания предоставляет описание судна или яхты добросовестно, но не может гарантировать точность этой информации, а также не ручается за техническое состояние. Покупатель должен проинструктировать своих агентов или оценщиков исследовать представленную информацию более подробно, по собственному желанию. Продажа судна или яхты, изменение цены или снятие с продажи будет происходить без предварительного уведомления.

ФОТОГРАФИИ







КОНТАКТЫ

Андрей Шестаков (Andrey Shestakov) – ведущий яхтенный брокер отдела продаж яхт и судов компании Shestakov Yacht Sales Inc. Официальный представитель Shestakov Yacht Sales Inc. для русскоговорящих клиентов в центральном офисе компании в Майами/Форт Лодердейл/Флорида/США.

Контактная информация

Email: andrey@shestakovyachtsales.com

Web: shestakovyachtsales.com

Телефоны

Краснодарский край: **+7(918)465-66-44**

США, Майами, Флорида: **+1(954)274-4435**

Время работы

Понедельник – Суббота: **9:00 - 21:00**
EDT

Воскресенье: **Закрето**

Адрес



Harbour Towne Marina, 850 NE 3rd St,
STE 213, Dania, FL 33004