

CAP'N CRUNCH — JERSEY CAPE YACHTS



Builder: JERSEY CAPE YACHTS

Year Built: 2012

Model: Sport Fisherman

Price: PRICE ON APPLICATION

Location: United States

LOA: 47' 0" (14.33m)

Beam: 15' 11" (4.85m)

Min Draft: 4' 9" (1.45m)

Max Draft: 4' 11" (1.50m)

Cruise Speed: 27 Kts. (31 MPH)

Max Speed: 31 Kts. (36 MPH)

Our experienced yacht broker, Andrey Shestakov, will help you choose and buy a yacht that best suits your needs **CAP'N CRUNCH — JERSEY CAPE YACHTS** from our catalogue. Presently, at Shestakov Yacht Sales Inc., we have a wide variety of yachts available on our sale's list. We also work in close contact with all the big yacht manufacturers from all over the world.

If you would like to buy a yacht **CAP'N CRUNCH — JERSEY CAPE YACHTS** or would like help answering any questions concerning purchasing, selling or chartering a yacht, please call **+1(954)274-4435**

TABLE OF CONTENTS

TABLE OF CONTENTS	2
SPECIFICATIONS	7
Basic Information	7
Dimensions	7
Speed, Capacities and Weight	7
Accommodations	7
Hull and Deck Information	8
Engine Information	8
DETAILED INFORMATION	9
Walkthrough	9
Helm Deck Area	9
Helm Electronics	10
Galley	10
Salon	11
Head	11
Guest Cabin	12
Master Cabin	12
Foredeck	12
Cockpit	13
Tower	14
Engine Room	14
Electric	15
Yard Period Upgrades	16
Fuel Burn Data	17
Comments	17
Exclusions	17
Disclaimer	18
Exclusions	18

Disclaimer	18
PHOTOS	19
Helm Deck	19
Helm Deck Seating Starboard	19
Helm Deck Seating Starboard	19
Helm Deck Seating Port	19
Teak Helm	19
Helm Area	19
Navigational Electronics	20
Navigational Electronics	20
Twin Garmin VHF's	20
Garmin AP, Data	20
Raised Helm	20
Emergency Engine Controls & Helm A/C	20
Starboard Side of Helm	21
Yanmar Gauges	21
Helm Breaker Panel	21
Starboard Companion Seat Base	21
Electric Teaser Reels	21
Galley	21
Galley	22
Galley Looking Forward	22
Galley Refrigeration	22
Galley Microwave	22
Galley Electrical Panel	22
Salon Looking Forward	22
Salon Settee	23
Salon Looking Aft	23
Salon Looking Starboard	23

Salon Entertainment Stack	23
Head	23
Shower	23
Starboard Side Cabin	24
Starboard Cabin Upper Bunk	24
Aft of Port Side Forward Bunk	24
Forward Cabin	24
Aft of Starboard Side Forward Bunk	25
Bow	25
Cockpit	25
Transom	25
Cockpit	25
Cockpit Shade	25
Bait Freezer	26
Double Drink Cooler	26
Tackle Center	26
Port Side Sink	26
Cockpit Forward	26
Forward Cockpit Storage	26
Ice or Catch Well	27
Gaff Locker	27
Livewell	27
Release Fighting Chair	27
Rocket Launcher Backrest	27
Clean Wake at 31 Knots	27
Tower	28
Tower Electronics	28
Tower Electronics	28
Tower VHF	28

Tower Thruster Control	28
Belly Band/Seat	28
6' Garmin Radar	29
SAT TV	29
Helm Deck Engine Room Entrance	29
Port Engine	29
In Front of Port Engine	29
Outboard of Port Engine	29
Engine Room Forward	30
Forward of Starboard Engine	30
Watermaker Outboard of Starboard Engine	30
Outboard of Starboard Engine	30
Steering Pump	30
New Generator	30
New Generator	31
August 2018 Yard Visit	31
August 2018 Yard Visit	31
August 2018 Yard Visit	31
August 2018 Yard Visit	31
August 2018 Yard Visit	31
August 2018 Yard Visit	32
Alternate Profile	32
Alternate Profile	32
Alternate Profile	32
Alternate Profile	32
Bow	32
CONTACTS	33
Contact details	33
Telephones	33

Office hours	33
Address	33

SPECIFICATIONS

Basic Information

Category: Sport Fisherman

Sub Category: Express

Model Year: 2013

Year Built: 2012

Country: United States

Vessel Top: Hardtop W/Tower

Fly Bridge: Yes

Dimensions

LOA: 47' 0" (14.33m)

Beam: 15' 11" (4.85m)

Min Draft: 4' 9" (1.45m)

Max Draft: 4' 11" (1.50m)

Speed, Capacities and Weight

Cruise Speed: 27 Kts. (31 MPH)

Max Speed: 31 Kts. (36 MPH)

Displacement: 44092.4524 Pounds

Gross Tonnage: 22 Pounds

Water Capacity: 135 Gallons

Holding Tank: 40 Gallons

Fuel Capacity: 750 Gallons

Accommodations

Total Cabins: 2

Total Berths: 4

Sleeps: 4

Total Heads: 1

Hull and Deck Information

Hull Material: Fiberglass

Deck Material: Teak

Hull Configuration: Modified V-Hull

Hull Finish: Polyethylene

Hull Designer: Jersey Cape

Exterior Designer: Jersey Cape

Interior Designer: Jersey Cape

Engine Information

Engines: 2

Manufacturer: Yanmar

Model: 8SY-STP

Engine Type: Inboard

Fuel Type: Diesel

DETAILED INFORMATION

Walkthrough

CAP'N CRUNCH is a custom Express Enclosed Hardtop Sport Fisherman. Access is over the gunwales into the spacious two level teak Cockpit.

Three top loading freezer, drink chill box, and sink are forward with a full size fighting chair and walk through door aft. Curved teak coaming boards show off her custom heritage.

Forward through a fold up door panel is the teak Helm Deck. There is L-shaped seating aft and to starboard with a bench seat to port.

A Release helm chair is centerline with matching port and starboard companion seats on cabinet bases.

The helm with three 15" Garmin touch screens is impressive!

Access to the cabin below is slightly to starboard.

The Galley is immediately to port with the private Head to starboard.

An L shaped settee is forward of the Galley with an over/under cabin with pocket door to starboard.

All the way forward is the Main Cabin with staggered over/under bunks and plenty of storage.

The 14 step Tower is fully equipped and offers an excellent vantage point.

Helm Deck Area

- Teak over fiberglass decking
- Removable Sunbrella runner
- Large hatch into Engine Room
- 3 Side fixed glass windows
- V-Cool UV protection on windows (8/16, \$3335)
- (3) Overhead LED light fixtures red/blue/white
- Marvair AC digital controls – starboard side vent
- Marine Air AC digital controls – port side vent
- Copper grid glassed into hardtop for SSB grounding
- (3) Release helm chairs w/cushions
- (2) Epoch US9 HD electric teaser reels overhead
- Folding teak door & hatch w/glass to cabin below
- Varnished teak trim on side windows

- Varnished teak helm pod
- Single lever controls
- 3 overhead speakers VHF, UHF, SSB
- L-shaped starboard side seating with removable cushions and storage below (cushions new 2/19)
- Bench seat, port side w/removable cushions and storage below
- Raised teak helm step
- (2) Yanmar LED digital engine gauges
- Clear acrylic aft enclosure one piece plus door
- Electronics breaker panel and storage under port companion seat
- Three drawers behind cabinet under starboard companion seat
- (3) stainless steel drink holders

Helm Electronics

- (3) Garmin GPS Map 7215, plotter, radar, weather, depth, AIS
- (2) Garmin VHF 200's w/remote mics & remote mounted overhead speakers
- Garmin GHC 10 autopilot
- Garmin GMI 10 digital marine instrument display
- ACR spotlight control
- Ritchie 6" High Speed magnetic compass
- Garmin GSD 26 digital black box network sounder
- SEA 245 150 watt MF/HF/SSB w/remote speaker & mic
- Alpine stereo CDA 118M AM/FM/CD/Bluetooth w/mini RCA & USB inputs
- (2) JL Audio 6.5 speakers
- Garmin GXM 51 XM Sat radio/weather antenna
- Airmar PB20 Weather station antenna
- (2) Garmin GC10 cameras, Cockpit & Engine Room
- Garmin AIS 300 receiver
- Seastar helm pump (new 6/16)
- Gost Navtracker 2.0 GPS tracking system with geofence and entry alarm (new 7/16)
- Engine gauges readout on Garmin screens
- Yanmar emergency start/stop, throttle controls
- Vetus bow thruster control
- Volvo interceptor trim tab controls
- (2) Yanmar LCD gauge panels
- Overhead storage both in front of helm

Galley

The Galley is down to port, is U shaped and offers the following features:

- Corian stone look countertops
- (2) stainless steel Vitrifrigo under counter refrigerator drawers
- (2) stainless steel Vitrifrigo under counter freezer drawers
- In counter trash receptacle
- (11) high gloss Cherry cabinet doors
- (2) high gloss Cherry drawers
- GE Profile built-in microwave oven
- Corian seamless sink
- Removable spray faucet
- Amtico walnut flooring w/removable Sunbrella cover
- 12 Volt outlet
- (4) Overhead lights
- GFI outlets
- Overhead hatch to back of helm electronics for easy access
- LED strip lighting under the cabinet toe kick

Salon

Just forward of and open to the galley is the salon area. An ultra-leather L-shaped settee is outboard to port with storage below and rod storage behind. Behind is a large storage shelf. Above are four Cherry high gloss cabinets.

In front of the settee is an adjustable height table with high gloss Burlwood and inlayed edge banding.

The forward most cabinet houses the yachts entertainment system consisting of a Bose V-35 AM/FM/CD/AV receiver, a Direct TV HD, STA TV receiver, a Samsung Blue Ray player and a Magnavox DVD recorder. There are 5 Bose mini cube speakers that deliver the sound. Across from the settee is a 36" Samsung HD LCD TV.

Also in the salon are three hinged entry steps for storage below, five halogen mini spots and a removable carpet runner over the Amtico walnut sole.

Head

The yacht's head is across from the galley behind a hinged Cherry door. The vanity has two high gloss Cherry doors below the Corian counter top with seamless sink. Above are two mirror medicine cabinets.

The toilet is a Raritan Atlantis electric model on a raised pedestal.

The stall shower has a clear Lexan door, molded shelf, storage locker, light and exhaust fan. The shower fixture is hand held or wall mountable.

Also, in the head are two overhead halogen mini spots, an A/C vent, Amtico walnut floor and a removable runner.

Guest Cabin

The guest cabin is located forward of the head and opposite the salon settee. There are two over/under bunks along the hull side. Each berth has a reading light. Below the lower berth is one large drawer.

Above the upper berth are four high gloss Cherry storage cabinets.

Also in the cabin are two halogen mini spots above.

Master Cabin

All the way forward is the master cabin with two crisscross bunks on the hull sides. Above each side are four hinged storage cabinets with cedar lining and an auto light. Forward is a mirror and to starboard is a small shelf above the bunk.

At the foot of each berth is a cedar lined hanging locker with auto light, a Corian shelf below with a drawer and storage cabinet below the shelf.

The entry door is a bi-fold arched Cherry door.

Above the berth is an Ocean Air sliding privacy and insect screen on the deck hatch. The sole is Amtico walnut planks.

Below the upper berth are two more storage cabinets, below the lower bunk is a large drawer.

Also in the cabin are four overhead halogen mini spots.

Foredeck

- Fiberglass decks w/non-skid walk-way on perimeter
- Varnished teak toe rails
- Aluminum bow rail set inside the varnished toe rail for ease of maintenance
- Varnished teak bow pulpit
- Lewmar anchor windlass
- (2) Foot switches for windlass
- Delta plow anchor
- All chain approx. 200' rode
- Bow anchor roller
- Flush deck hatch to anchor locker w/freshwater wash down

- Grab rails port & starboard side of house
- International Navigation lights (recessed)
- 3 Panel windshield
- (3) Windshield wipers & washers
- Bomar deck hatch into Forward Cabin
- 3 Side black Textulene windshield cover (new 8/16)
- Revere (6) person life raft chocked on bow w/hydro static release
- Dual spring line cleats

Cockpit

- Teak over fiberglass Cockpit sole
- Teak coaming boards
- Curved teak covering boards
- (8) Recessed rod holders in covering boards
- “Release” varnished fighting chair w/rocket launcher backrest & cover
- Cockpit door & gate, starboard side
- Garmin CCTV camera into Cockpit
- (2) Overhead lights in brow
- (3) Port & (3) starboard tower leg rod holders
- Lighted live well in transom centerline under two teak hatches
- Raised step into Helm Area w/(2) hinged top teak storage lockers
- Vartech 10” color monitor, duplicates Garmin screen display from Helm drops down from overhead
- Large top loading bait freezer
- Refrigerated drink box w/ (2) hinged lids
- (2) large hinged cabinets with custom “Starboard” tackle (8) drawers, (3) large (5) small.
- (2) Gaff storage lockers w/ hinged doors
- Chrome hawse line openings in transom corners
- (2) LED spreader lights in brow
- Fiberglass step box with storage within
- Lee triple spreader outriggers w/collapsible back stays
- Lee center rigger
- Teak transom, recessed & varnished
- (4) Seablaze 3 underwater lights
- Refrigerated Cockpit lift out catch well, 9’ wide w/(2) hinged access hatches
- Raw water wash down
- P & R Canvas Cockpit fly w/(2) poles, pullies & vee cleats (new 6/18)
- Sockets for transom door swim ladder
- Hidden fresh water washdown spigot to port
- Hidden salt water washdown spigot to starboard
- Hidden fresh water shore inlet to port
- (2) Cockpit speakers

- (6) place rocket launcher on aft tower reel
- (4) upright rod holders in upper cockpit sole
- Portside cockpit sink with shower wand under hinged top
- (2) s/s drink holders
- Eskimo dumps chipped ice into live well
- (3) refrigerated controls for fish box, drink holder
- Hinged storage under step

Tower

- 14 Step custom aluminum tower
- Solid fiberglass buggy top w/ one overhead light
- Fiberglass console
- Electronic engine controls
- Padded bellyband as an upholstered seat
- Footrest
- Freshwater wash down
- Garmin GPS 5212 plotter, radar, depth, weather, AIS
- Garmin GMI 10 speed & depth
- Garmin GHC autopilot
- Garmin VHF 2000 radio w/DSC
- 4" Ritchie magnetic compass
- Forward LED spreader lights
- Horn
- Trac Vision M5 Sat TV dome
- Garmin X HD 6" open array radar scanner
- Volvo trim tab control
- Vetus bow thruster control
- (2) Garmin GPS sensors
- (3) VHF antennas
- Rupp Standoffs for (4) 16' antennas (3 VHF, 1 SSB)
- Stainless steel helm wheel
- Single side band antenna
- ACR searchlight
- (2) aft facing quartz lights
- Forward facing LED light
- Halogen down lights

Engine Room

- Access through helm deck
- T/900 HP Yanmar/Scania V8 diesels, direct drive

- Seascope power steering unit Commercial Division of Seastar (new 2017)
- Fiberglass engine muffler
- (4) DC LED Engine Room lights
- (6) AC Engine Room lights
- Reverso oil change pump, 4 position
- (2) Racor 1000 fuel filters
- Dometic Eskimo Ice Chipper model EI600D
- AC raw water pump w/backup pump
- (2) Marvair AC compressors
- Hot/cold water manifold system
- Fireboy 19 lb. FM 2000 fire control system
- 120 Volt outlet
- Livos technology fan control system
- (2) Sea Frost refrigeration compressors
- (2) Yanmar electronic engine control boxes
- Marvair refrigeration compressor
- Garmin CCTV camera
- ZF-335A 1.767 to 1 ratio transmissions
- Dripless shaft seals
- Crash valves on both engines
- Shaft tubes
- 2.5" Stainless steel prop shafts
- Nibral 5 blade 26.5" x 40" props
- Watermakers Inc. 500 GPD component style watermaker
- (2) Sea Chest type raw water delivery with air valves
- Fresh water washdown
- (3) auto/manual bilge pumps
- Dometic/Marine Air 16,000 BTU – port side of helm area A/C unit

Electric

- 12/24 Volt DC system
- 110/220 Volt 60 hz AC system
- New 16 KW Fisher Panda genset w/hush cover (new 12/17)
- Glendinning 50 amp 220 volt shore cord reel
- (4) Odyssey PC 2250 12 volt batteries in battery boxes (new 9/16)
- Group 27 generator battery (new 8/18)
- (2) Group 31 bow thruster batteries located forward
- Cockpit 12 volt electronic breaker panel w/(12) breaker protected circuits
- ProMariner On board solutions 4 stage 12 volt 40 amp battery charger
- (2) Victron Centaur 24 volt 30 amp battery chargers - new 10/19
- (3) battery shut off switches
- Battery parallel switch

- DC main electric panel w/33 breaker protected circuits
- DC main electric panel w/DC digital volt meters
- DC main electric panel w/DC digital amp meters
- AC main electric panel w/7 breakers protected 220 volt circuits
- AC main electric panel w/18 breakers protected 110 volt circuits
- AC main electric panel w/AC digital volt meters
- AC main electric panel w/(2) AC digital amp meters
- ProMariner battery charger control panel
- Liquid level meter at main pump

Yard Period Upgrades

SEPT. TO DEC. 2017

CAP'N CRUNCH was brought back to Jersey Cape Yachts for a yard period. Work performed included:

1. Sand blasting bottom, new barrier coat and paint
2. Engine fluid and cooling service @ 842 hours
3. New cutlass bearings
4. Replace dripless shaft seals
5. Fill keel w/lead/resin mix for improved handling w/Tuna Tower
6. Replace Panda generator with new larger size
7. Service all electrical components and prove all systems
8. Custom eyebrow on bow thruster tube
9. Steering system power pack replacement (Feb. 2018) (\$5800)

AUG. 2018 AT TREICHEL MARINE, DANIA BEACH, FL

Yard period included the following work:

1. Interlux Micron Extra blue bottom paint
 2. Prop One on props, shafts, struts and rudders
 3. Fabricate and install 2 new stainless steel rudders
 4. New upper and lower rudder bearings w/seals
 5. New rudder collars and ball joints
 6. Rebuild steering cylinder
 7. Repaint boot stripe blue
 8. Sand transom, new name and four coats of clear coat
 9. 3 Step compound and wax entire vessel
 10. Replace Volvo interceptor trim tab systems w/new
 11. Full air conditioning service
- 1000R ENGINE SERVICE

Completed 8/2018 by Certified Diesel, Ft. Lauderdale Yanmar/Scania authorized dealer

1. Remove and replace all fluids and filters
2. Remote and replace heat exchangers, belts, impellers and coolers
3. New thermostats, zincs, belts, CCV filters, impellers and cams
4. Engine hours at completion 963

Fuel Burn Data

1800 rpm	23 knots	50 gph
1900 rpm	26 knots	59 gph
2000 rpm	27.5 knots	69 gph
2300 rpm	32 knots	88 gph

Comments

CAP'N CRUNCH is truly a one of a kind Express Fisherman. Adapted from a Blount design hull with plenty of Carolina flare, the hull is dry and seaworthy.

Her hull is painted in a custom "Ethereal Blue" with a bright white superstructure and plenty of high gloss brightwork.

She was custom built for a knowledgeable owner with a very thorough design spec.

Countless upgrades since the current owner's purchase Aug. 2016. He maintains her in mint condition with annual services in Ft. Lauderdale. She is ready to fish immediately without any additions or changes.

"Ready to go", **CAP'N CRUNCH** represents a sensibly priced custom sport fisherman with all an angler could desire.

Exclusions

While every effort was made to list all pertinent included equipment aboard **CAP'N CRUNCH**, there are some personal belongings aboard. Prospective purchasers should assume any item not specifically mentioned herein will not convey at closing.

Disclaimer

Specifications are provided for informational purposes only. Data was obtained from sources believed reliable but is not guaranteed by owner or brokers. Buyer assumes responsibility to verify all speeds, capacities, consumption's and other measurements contained herein and otherwise provided and agrees to instruct his agents to confirm such details prior to purchase. Vessel is subject to prior sale, price and inventory changes and withdrawal from market without notice.

Exclusions

Owner's personal belongings.

Disclaimer

The Company offers the details of this vessel or yacht in good faith but cannot guarantee or warrant the accuracy of this information nor warrant the condition of the vessel. A buyer should instruct his representatives, agents, or his surveyors, to investigate such details as the buyer desires validated. This vessel or yacht is offered subject to prior sale, price change, or withdrawal without notice.

PHOTOS

Helm Deck



Helm Deck Seating Starboard



Helm Deck Seating Starboard



Helm Deck Seating Port



Teak Helm



Helm Area



Navigational Electronics



Navigational Electronics



Twin Garmin VHF's



Garmin AP, Data



Raised Helm



Emergency Engine Controls & Helm A/C



Starboard Side of Helm



Yanmar Gauges



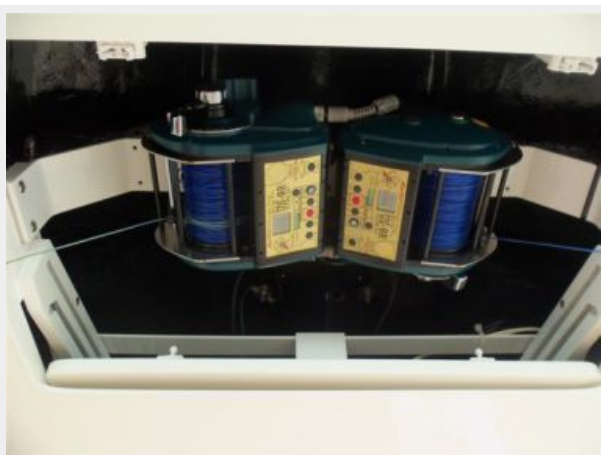
Helm Breaker Panel



Starboard Companion Seat Base



Electric Teaser Reels



Galley



Galley



Galley Looking Forward



Galley Refrigeration



Galley Microwave



Galley Electrical Panel



Salon Looking Forward



Salon Settee



Salon Looking Aft



Salon Looking Starboard



Salon Entertainment Stack



Head



Shower



Starboard Side Cabin



Starboard Cabin Upper Bunk



Aft of Port Side Forward Bunk



Forward Cabin



Aft of Starboard Side Forward Bunk



Bow



Cockpit



Transom



Cockpit



Cockpit Shade



Bait Freezer



Double Drink Cooler



Tackle Center



Port Side Sink



Cockpit Forward



Forward Cockpit Storage



Ice or Catch Well



Gaff Locker



Livewell



Release Fighting Chair



Rocket Launcher Backrest



Clean Wake at 31 Knots



Tower



Tower Electronics



Tower Electronics



Tower VHF



Tower Thruster Control



Belly Band/Seat



6' Garmin Radar



SAT TV



Helm Deck Engine Room Entrance



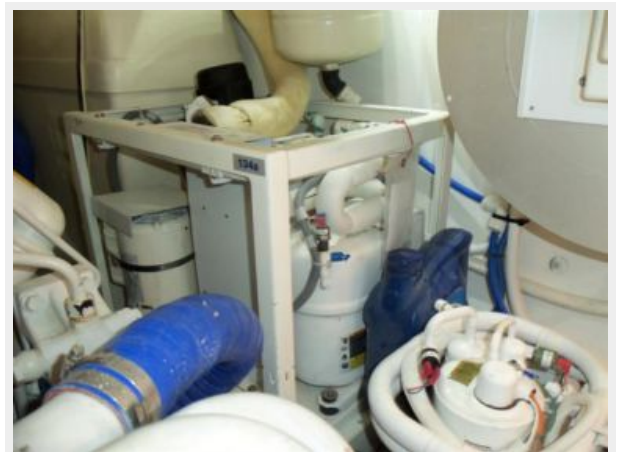
Port Engine



In Front of Port Engine



Outboard of Port Engine



Engine Room Forward



Forward of Starboard Engine



Watermaker Outboard of Starboard Engine



Outboard of Starboard Engine



Steering Pump



New Generator



New Generator



August 2018 Yard Visit



August 2018 Yard Visit



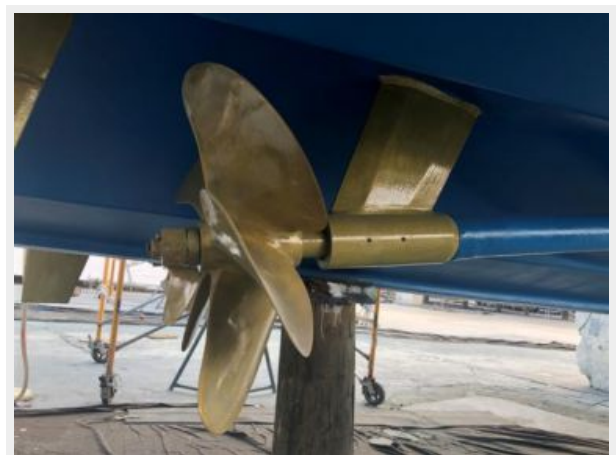
August 2018 Yard Visit



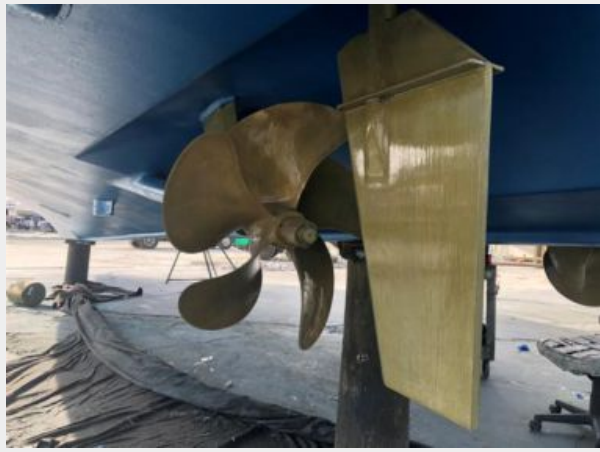
August 2018 Yard Visit



August 2018 Yard Visit



August 2018 Yard Visit



Alternate Profile



Alternate Profile



Alternate Profile



Alternate Profile



Bow



CONTACTS

Andrey Shestakov, leading yacht broker of the sales department of Shestakov Yacht Sales Inc. Shestakov Yacht Sales Inc., the official representative of the Miami/Fort Lauderdale FL headquarters.

Contact details

Email: andrey@shestakovyachtsales.com

Web: shestakovyachtsales.com/en/

Telephones

USA: +1(954)274-4435

Office hours

Monday – Saturday: **9:00 - 21:00** EDT

Sunday: **closed**

Address



Harbour Towne Marina, 850 NE 3rd St,
STE 213, Dania, FL 33004