

DRIVEN — VAGABOND



Builder: Vagabond

Year Built: 1982

Model: Cruising Ketch

Price: PRICE ON APPLICATION

Location: United States

LOA: 47' 0" (14.33m)

Beam: 13' 6" (4.11m)

Min Draft: 5' 6" (1.68m)

Our experienced yacht broker, Andrey Shestakov, will help you choose and buy a yacht that best suits your needs **DRIVEN — Vagabond** from our catalogue. Presently, at Shestakov Yacht Sales Inc., we have a wide variety of yachts available on our sale's list. We also work in close contact with all the big yacht manufacturers from all over the world.

If you would like to buy a yacht **DRIVEN — Vagabond** or would like help answering any questions concerning purchasing, selling or chartering a yacht, please call **+1(954)274-4435**

TABLE OF CONTENTS

TABLE OF CONTENTS	2
SPECIFICATIONS	3
Overview	3
Basic Information	4
Dimensions	4
Speed, Capacities and Weight	4
Accommodations	4
Hull and Deck Information	4
Engine Information	5
DETAILED INFORMATION	6
Features	6
Exclusions	13
Disclaimer	14
PHOTOS	15
CONTACTS	24
Contact details	24
Telephones	24
Office hours	24
Address	24

SPECIFICATIONS

Overview

The Vagabond 47 is one of Bill Garden's finest designs. Designed to be a safe, comfortable world voyaging cruiser and a luxury yacht, the Vagabond 47 can be certainly thought of as the Cadillac of blue water cruisers. A cutter rigged ketch, she was constructed by Blue Water Yacht Builders in Taiwan with a full keeled, hand-laid, single piece fiberglass hull construction with a skeg hung rudder and internal cast iron ballast which is encapsulated in fiberglass.

The bullet-proof hulls were strongly built to very stringent specifications with over an inch of fiberglass around its full keel. She can safely be handled by one experienced hand or a couple and as Arthur Beiser, in his definitive work "The Proper Yacht" describes the Vagabond 47, she is "more ship than yacht". With her twenty ton displacement she has the ability to stow an immense supply of fuel, water and stores without being overloaded. With a fine entry, strong shoulders and aft sections she really sails and stays on her feet underway, making it easy and comfortable on her crew. Wide side decks, high lifelines and solid teak handrails on the aft deck make for a sense of safety and security moving about while underway. Her center cockpit will protect you in all types of seas and makes you feel even safer.

With her beautiful clipper bow, classic lines, stepped aft deck and romantic pirate ship windows in the transom, she truly is a work of art and will turn heads everywhere you take her. These beauties are found in all corners of the world, a testament to their ocean passaging capability.

The interior of the vessel is romantic, with truly magnificent detail in the hand rubbed satin finish teak joinery, beautiful louvered cabinet doors, arched doorways, taff-rail fiddled shelving, carved features, comfortable settees, high ceilings, very nice lighting and ventilation. A spaciousness one isn't used to seeing in a boat this size is clearly evident. Everywhere you look, you will appreciate the detail and workmanship.

It truly is all the comforts of home anywhere in the world. The unique qualities of this vessel need to be seen in order to truly appreciate what she is capable of.

As a very clean blue water equipped vessel, "DRIVEN" represents a great opportunity to acquire such a quality vessel for blue water cruising, family cruising or living aboard.

Call and make an appointment to see "DRIVEN" today. She's certainly worthy of your personal inspection!

Basic Information

Category: Cruising Ketch

Sub Category: Cruising Sailboat

Model Year: 1982

Year Built: 1982

Country: United States

Coast Guard #: 657905

Vessel Top: Bimini Top

Dimensions

LOA: 47' 0" (14.33m)

LWL: 36' 0" (10.97m)

LOD: 47' 0" (14.33m)

Beam: 13' 6" (4.11m)

Min Draft: 5' 6" (1.68m)

Speed, Capacities and Weight

Displacement: 40000 Pounds

Water Capacity: 226 Gallons

Holding Tank: 35 Gallons

Fuel Capacity: 220 Gallons

Accommodations

Total Cabins: 2

Total Berths: 4

Sleeps: 7

Total Heads: 2

Hull and Deck Information

Hull Material: Fiberglass

Deck Material: Fiberglass

Hull Configuration: Monohull

Hull Color: White

Hull Finish: Fiberglass

Hull Designer: William Garden

Engine Information

Engines: 1

Manufacturer: Ford Lehman

Model: 2712E

Engine Type: Inboard

Fuel Type: Diesel

DETAILED INFORMATION

Features

Accommodations

Guest stateroom: Starting forward, there is a louvered locker for access to the divided chain locker. The berth itself is 6'2" long, 12" wide at the forward end and 84" wide at the aft end. An insert can be added to fill the center of the bunk. There is a step built in for ease of getting in on center and lockers with shelves to either side of that under the bunk. Forward of those lockers the entire space beneath the bunk is storage. Above the bunk and on either side are three sets of louvered door lockers running the length of the bunk; the space above those is all fiddled shelf storage. The hullsides and bulkheads are lined with teak staving. Aft of the bunk on starboard there is a nightstand with a pinrailed counter. Aft of the nightstand is a large hanging locker. Headroom is 6'6"; an overhead hatch and porthole provide ventilation, with additional lighting from two overhead lights and two brass LED reading lights.

Forward head: Located aft of the V berth on port, as you enter the sink along the hull and to your left and the head is to your right behind the door. The blue tiled countertop has a teak fiddle and deep stainless steel sink. There is a pull-out shower wand and a fresh water foot pump. Beneath the counter are two lockers, while above there is a large mirror and a tall louvered medicine cabinet. To the right of that and above the head is another locker, which has a pinrailed shelf above it. Headroom is 6'. There is an opening port, deck prism, overhead light and a brass reading light for ventilation and lighting.

Saloon: The saloon on the Vagabond 47 is huge and feels much grander than her 13'6" beam. The storage is amazing in here, as it is throughout the rest of the boat.

At the forward end of the starboard side, there is a bricked in nook for the diesel cabin heater; below that is a locker. Outboard of that along the same bulkhead is a locker at the end of the settee and a TV on a swing-arm bracket above that. When you swing the TV out there is a locker with shelves where the other TV components live. Along the hull is a settee which can pull out to convert it into a 6'6" long x 40" wide bunk. There is storage below and behind the seat backs, with a pinrailed shelf above and behind the back of the settee and a pair of opening ports. Teak staving lines the hullside above that. At the aft end of the settee there is another settee that forms an L. Between the two is a boxed out unit that has locker and electronics space, the electrical panels and forms the back side of the crew's quarters. There is a custom teak coffee table here that is movable.

At the forward end on port there is a huge storage unit, with three drawers and lockers below the desktop space, a locker on the forward bulkhead and three above the desk; the forward most has a pinrailed shelf and a port above it.

Aft of that unit is another 6'6" settee. Beneath the settee is battery storage; there is storage behind the settee and another pinrailed shelf above and behind the seat back, with teak staving

and a couple more ports along the hullside. The handcrafted dinette table has a bullnose edge to it and is café-sized with the leaves folded at 30" x 27"; open the leaves and it expands to 60" for when you need the additional serving space.

The entire saloon space has great headroom, with 6'4" towards the forward end of the cabin and 7' at the aft end. Lighting and ventilation comes from an overhead hatch, two fixed and four opening house side ports and five round opening hullside ports. Additionally, there are four brass LED reading lights and one Hella fan.

Galley: the galley is located in the corridor on port between the saloon and the master stateroom aft. The countertops are attractive blue glazed ceramic tiles with teak fiddles, with an incredible amount of counterspace. The storage space is just amazing.

Starting on the side towards centerline, the long counter has a deep brushed stainless sink; pinrailed organizer shelves are to either side of the sink and a very long pinrailed spice rack above. At the forward end of the counter there are double-doored lockers both above and below the counter.

On the outboard side entering from the saloon the first thing you will notice is the heavy teak refrigerator and freezer doors; each with heavy duty stainless hinges, latches and individual temperature gauges on the face of each. Each of the boxes is stainless steel lined. The countertop on this side centers the stove. Beneath the oven is a wide drawer for cookware; there is a locker to the left of the stove and a pull-out cutting board and four drawers to the right of it.

Directly behind the counter and along the hull there is a drop front locker forward, a tiled counter space directly behind the stove with a stainless fiddle and then locker space with sliding doors aft of that. At the aft end is the microwave. There are two double door and one single door cabinets above the counter as well as two pinrailed shelves.

Headroom in the galley is 6'3". There are under counter lights on either side, an overhead light and three opening ports for ventilation.

Crew's cabin and workshop: Located at the base of the companionway and on port, aft of the saloon, there is a crew's quarters, followed by a workshop area. In "DRIVEN" the single mattress has been removed and the space converted for storage of parts, etc. If you wanted, it could easily be converted back for more berthing. The back where the mattress would normally be has drop-front lockers, with a pinrailed shelf above that. At the forward end there is drawer storage.

Moving back into the workbench area, the bench is outboard and provides the sound enclosure for the generator. The side windows of the dodger stow in here on a custom mount when not in use. Behind the box there are a pair of sliding doors for a locker and taffrail shelving above that. Towards centerline are double doors for access to the engine room.

There are doors on either end of these spaces- forward into the saloon and aft into the head. Headroom in the crew cabin is 6'9"; headroom in the workbench area is 6'2". There is one fixed

light, two opening ports, and a dorade as well as an overhead light and two brass reading lamps.

Aft head: The aft head has dual entry- both from the master stateroom and the crew's quarters/workshop area. Entering from the master stateroom you are in the head portion. To the right of the head is a huge linen closet with shelves, while behind it is a cubby and then above that shelf storage. Moving forward in the space you find the sink and shower area. As with the forward head, there is a blue tiled countertop with a teak fiddle and deep stainless steel sink. There is a pull-out shower wand and a fresh water foot pump. Double door lockers are below the sink and sliding door storage above it, with a pinrailed shelf above that. There is an opening port, with additional lighting from a deck prism, an overhead light and a brass reading light.

Aft stateroom: Entry to the master stateroom is either through the galley on port or the crew's quarters and head on starboard. The centerline berth has a custom mattress and is 55" x 80". There is storage beneath the berth and four large drawers at the foot. There is loads of storage in this cabin. Across from the foot of the bed is a vanity with a pinrail countertop. Beneath are four more drawers and two lockers with doors. Above it is a mirror, which is framed by two wall mounted lamps.

On either immediate side of the berth there are cushions; beneath those is storage. Outboard of that on starboard there are two lockers- one taller with a louvered door and towards the head of the bed a lower one with a drop down door. Above each is a shelf with pin rails around them. On port there is a double-doored hanging locker forward, a single doored locker and then a drop down door locker aft of that. The two single door lockers have pinrailed shelves above them as on starboard.

At the head of the bed there is a louvered door locker on center, framed by a pair of beautiful six-paned fixed windows. The hullsides and transom are covered with rich teak planking. Above the windows and wrapping around from the centerline locker aft to the forwardmost bulkheads are pinrailed shelves, radiused in the corners for an added display of charm and fine workmanship.

The cabin has 6'2" headroom and is ventilated by two dorade vents, a Hella fan, an overhead hatch and two opening ports. Additional lighting is also from an overhead light and three brass reading lamps. The overall feel of this cabin is of sumptuous beauty.

- Dickinson Newport diesel cabin heater in brick surround
- Hand rubbed satin varnish
- Pinrailed shelves throughout
- Solid bronze opening ports
- Brass LED reading lights throughout
- Teak staving on hullsides
- Solid teak doors, door frames, trim, drawer fronts and louvered locker doors
- Teak and holly cabin sole
- Majority of cabin sole is removable

Galley

- Ceramic tile countertops re-grouted ('17)
- Deep stainless steel sink
- Single lever brushed stainless steel water mixer ('17)
- Pull-out sprayer wand ('17)
- Fresh water foot pump
- Salt water foot pump
- Force 10 3 burner LPG stove with oven, broiler and thermometer ('98)
- 10# aluminum LPG tanks (2)
- Magic Chef microwave oven ('15)
- Front loading stainless steel lined freezer
- Front loading stainless steel lined refrigerator
- Frigoboat keel cooled freezer w/Danfoss 50 compressor ('15)
- Frigoboat keel cooled refrigerator w/Danfoss 30 compressor ('15)
- Coastal Climate digital refrigeration and freezer controls (2)
- Mechanical thermometers on refrigeration and freezer doors

Heads

Forward-

- Ceramic tile countertop with teak fiddles
- Tile work re-grouted ('17)
- Stainless steel sink
- Scandvik hot/cold water mixer with pull-out shower wand
- Fresh water foot pump
- Teak shower grate
- Electric shower sump pump
- Jabsco manual head
- 15-gallon fiberglass holding tank
- Holding tank Near Full indicator ('13)
- Y-valve for overboard discharge
- Jabsco macerator pump

Aft head-

- Ceramic tile countertop with teak fiddles
- Tile work re-grouted
- Stainless steel sink
- Scandvik hot/cold water mixer with pull-out shower wand
- Fresh water foot pump
- Teak shower grate

- Electric shower sump pump
- Jabsco manual head
- 20-gallon fiberglass holding tank
- Holding tank Near Full indicator ('13)
- Y-valve for overboard discharge
- Jabsco macerator pump
- Oval mirror

Water Systems

- Raritan 12-gallon hot water heater ('04)
- 226 gallons of fresh water in stainless steel tanks
- Hot and cold fresh water lines replaced ('15)
- Jabsco Par-Max fresh water pump
- Water filtration system
- Wema water tank gauge ('15)
- Hot & cold cockpit shower
- Deck/anchor washdown
- Ultra Pumpswitch and high water alarm
- Two electric bilge pumps
- Manual bilge pump under cabin sole in crew's quarters
- MCG 40,000 BTU Hydronic heating system (from engine hot water)
- Heater Craft Hydronic heater controller

Hull and Deck

- Full keel with skeg hung rudder
- Internal cast iron ballast fully encapsulated in fiberglass
- Bowsprit replaced ('12)
- Teak decks removed and all deck coring replaced ('15)
- Kiwi Grip non-skid paint ('15)
- Raised bulwarks with teak cap rail
- Hawse pipes and mooring cleats bulwark mounted for bow and spring lines
- Stern mooring line cleats deck mounted
- Double stainless steel bow rollers
- Stainless steel strike plates for anchor chain on deck
- 60# CQR with 320' of 3/8" chain
- 45# Delta with 50' of 3/8" chain and 200' of 3/4" nylon rode
- 35# Danforth with 50' of 3/8" chain and 200' of 3/4" nylon rode
- Simpson Lawrence Horizon 1500 electric anchor windlass with up & down foot switches
- Windlass remote in cockpit
- Stainless steel bow pulpit with teak bow rail seat
- Double vinyl life lines with port and starboard boarding gates on main deck
- Teak taffrail and lower vinyl lifeline on aft deck

- Custom hard cockpit enclosure with integral boom crutch, grab rails, opening front windows, removable side windows and Sunbrella back enclosure
- Pin rails and belaying pins at main mast
- Deck storage boxes at main mast
- Teak grab rails on house top
- Custom heavy duty dinghy davits
- Stern rail seats with cup holders
- Doghouse bow hatch
- Hatches
- Opening bronze portholes with screens
- Fixed lights

Sails and Rigging

- Schaefer 3100 head sail furler
- Schaefer 2100 main sail furler
- Club footed staysail boom
- Main mast chain plates replaced ('12)
- Forespar spinnaker pole
- Mast mounted adjustable spinnaker pole car and track
- Lewmar 2 speed #48 self-tailing primary winches ('02)
- Lewmar 2 speed #40 self-tailing secondary winch ('02)
- Barlow #20 secondary winch
- Barlow #20 winches on mizzen (2)
- Barlow #20 winches on main (3)
- Spinlock line clutch on main mast
- Barlow 16 on main boom
- 130% Genoa (good)
- Staysail (fair)
- Mainsail (fair)
- Mizzen sail (fair)

Engine and Machinery

- Ford Lehman 2712E 85HP diesel engine
- Transmission damper replaced ('16)
- Michigan 3 blade Dyna-Jet 24x19 prop ('15)
- Starter motor ('16)
- 220 gallons of fuel in fiberglass tanks ('15)
- Fuel tank gauges ('15)
- Switchable dual Racor 500 fuel filters for main engine
- Racor vacuum gauge
- Racor fuel filter for generator
- Fire Boy 1301 Halon fire extinguisher system

- Hynautic hydraulic steering
- Sunpro oil pressure gauge
- Teak and stainless steel helm wheel
- Dual lever engine controls
- Danforth Constellation compass
- Marine Air air conditioning

Electrical

- 30A shore power connections (2)
- 50' 30A shore power cords (2)
- 50A to 2-30A splitter
- 30A to 15A adaptor
- 110V electrical panel w/volt meter
- 110V receptacles throughout w/GFCI protection
- 110V receptacle in cockpit
- Freedom 30 3000W inverter/ 140A charger
- 12v electrical panel with volt meter
- Blue Sea Systems battery selector switch
- Guest battery combiner switch
- Xantrex digital echo charge regulator
- 12v receptacle in cockpit
- Power Max 120A alternator ('16)
- Balmar Max Charge regulator ('16)
- East Penn 4D engine starting battery
- generator starting battery
- Six Trojan T-105 house batteries (660 AH)
- Westerbeke 7.7 KW generator with 7333 hours
- Air Breeze wind generator
- Deck lights on main and mizzen masts
- Masthead tri-color light
- LED brass reading lights

Electronics

- Garmin 7212 touch screen chart plotter ('13)
- Garmin 3010C chart plotter
- Garmin GMR HD 24 mile radar ('13)
- Garmin Blue Charts for Entire East Coast, SE Florida, S. Bahamas
- Garmin AIS 600 transceiver ('13)
- ICOM M700 Pro SSB radio
- SEA 1612C Autotuner
- ICOM IC-M422 VHF radio at helm
- ICOM IC-M402 VHF radio in cabin

- Raytheon RAY430 Loudhailer
- Raymarine Smart Pilot ST6001 autopilot
- Raymarine ST60 Depth
- Raymarine ST60+ Wind
- Ubiquiti Bullet M2HP Wi-Fi antenna
- Netgear Router
- Samsung 23" "Anynet" DTV on swing arm bracket in saloon
- Samsung Blu-Ray DVD player ('15)
- Magnavox SDTV converter box
- Kenwood AM/FM/CD player
- Four saloon and two cockpit speakers

Other Equipment

- Caribe 10' RIB ('04)
- Mercury 15HP outboard motor ('04)
- Winslow 6 person life raft (needs recertification)
- Mast-mounted radar reflector
- Cockpit cushions
- Magma stainless steel LPG BBQ grill
- Aft deck table
- Sunbrella covers for teak taffrails on aft deck
- Lifesling
- PFD's
- Dive tank storage brackets for two tanks
- Rod holder
- Flag staff
- Emergency tiller
- Spare companionway drop boards
- Davis 12v anchor light
- Brinkman 2000,000 candle power 12v. spotlight
- Mystic Stainless stainless steel boarding ladder
- Loads of spare parts, filters, etc.
- Manuals

Exclusions

Owner's personal effects and any items not specifically described in this listing

Exclusions

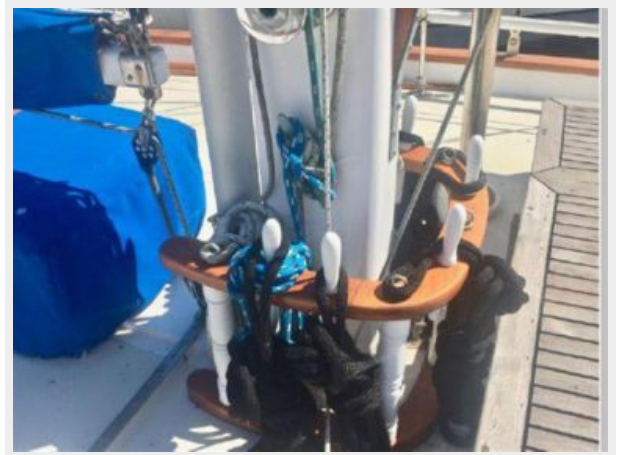
Owner's personal belongings.

Disclaimer

The Company offers the details of this vessel or yacht in good faith but cannot guarantee or warrant the accuracy of this information nor warrant the condition of the vessel. A buyer should instruct his representatives, agents, or his surveyors, to investigate such details as the buyer desires validated. This vessel or yacht is offered subject to prior sale, price change, or withdrawal without notice.

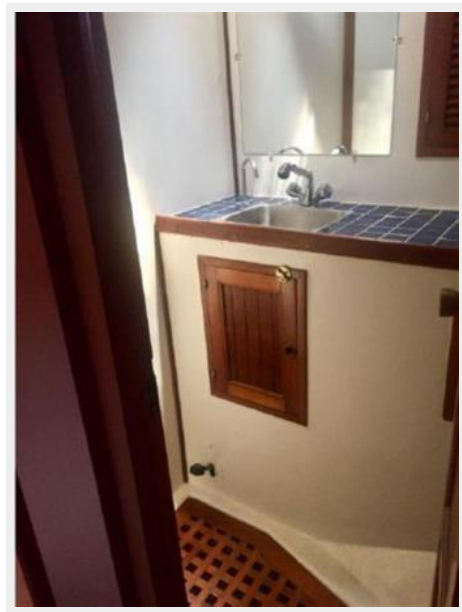
PHOTOS



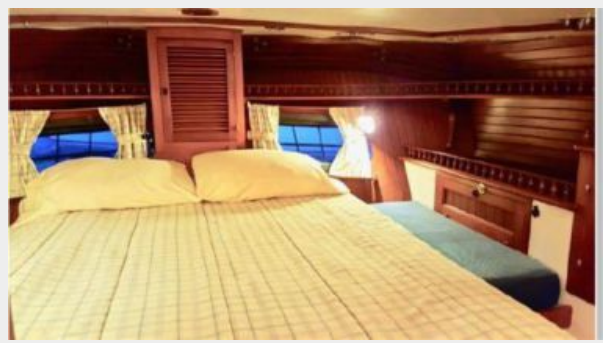


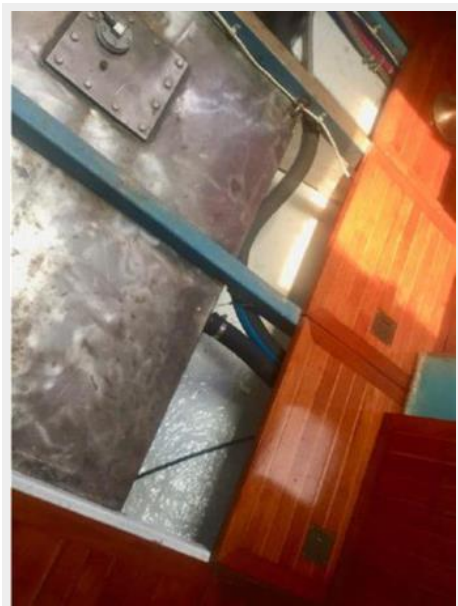


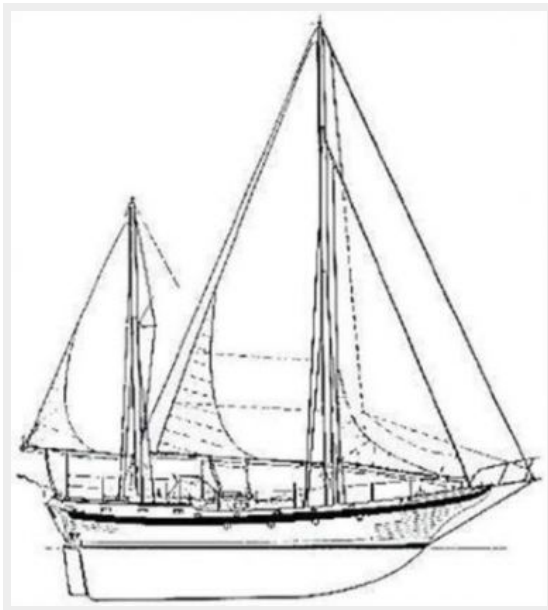
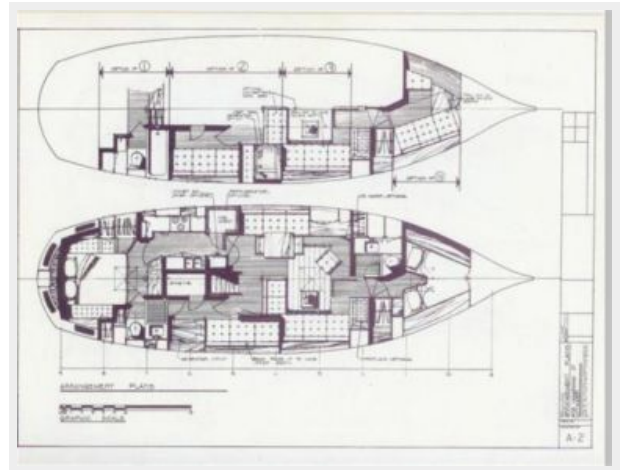












CONTACTS

Andrey Shestakov, leading yacht broker of the sales department of Shestakov Yacht Sales Inc. Shestakov Yacht Sales Inc., the official representative of the Miami/Fort Lauderdale FL headquarters.

Contact details

Email: andrey@shestakovyachtsales.com

Web: shestakovyachtsales.com/en/

Telephones

USA: +1(954)274-4435

Office hours

Monday – Saturday: **9:00 - 21:00** EDT

Sunday: **closed**

Address



Harbour Towne Marina, 850 NE 3rd St,
STE 213, Dania, FL 33004