

## 46 2000 BENETEAU 461 — BENETEAU



**Builder:** BENETEAU

**Year Built:** 2000

**Model:** Cruising Sailboat

**Price:** PRICE ON APPLICATION

**Location:** United States

**LOA:** 46' 0" (14.02m)

**Beam:** 13' 11" (4.24m)

**Min Draft:** 5' 7" (1.70m)

**Cruise Speed:** 6 Kts. (7 MPH)

**Max Speed:** 7 Kts. (8 MPH)

Our experienced yacht broker, Andrey Shestakov, will help you choose and buy a yacht that best suits your needs 46 2000 Beneteau 461 — BENETEAU from our catalogue. Presently, at Shestakov Yacht Sales Inc., we have a wide variety of yachts available on our sale's list. We also work in close contact with all the big yacht manufacturers from all over the world.

If you would like to buy a yacht 46 2000 Beneteau 461 — BENETEAU or would like help answering any questions concerning purchasing, selling or chartering a yacht, please call +1(954)274-4435

---

# TABLE OF CONTENTS

---

TABLE OF CONTENTS	2
SPECIFICATIONS	3
Overview	3
Basic Information	3
Dimensions	3
Speed, Capacities and Weight	4
Accommodations	4
Hull and Deck Information	4
Engine Information	4
DETAILED INFORMATION	5
Features	5
Exclusions	9
Disclaimer	9
PHOTOS	10
CONTACTS	17
Contact details	17
Telephones	17
Office hours	17
Address	17

---

# SPECIFICATIONS

---

## Overview

---

Designed by Bruce Farr and Armel Briand, OKEMAH ROSE is a well-maintained 2 cabin Beneteau 461. She is the perfect size for bay and coastal cruising with all the amenities you'll need for weekend or extended voyages. With reverse-cycle marine air-conditioning and heat, updated solar system, full enclosure, dual refrigeration, a beamy cockpit, and a comfortable centerline queen in the forward owner's cabin, the Beneteau 461 offers very comfortable interior and exterior spaces.

Beneteau is the world's largest producer of yachts. The 461 is part of the Beneteau Oceanis line of cruising yachts. First built in 1996, it is available in 4 different layouts ranging from the two-cabin owner's version to a four-cabin charter version.

### HIGHLIGHTS:

- **Reverse-cycle marine air conditioning and heat**
- **Two cabin, two head layout with gourmet galley**
- **New sails in 2012, in-mast main sail**
- **2015 Garmin GPSmap 741x chart plotter and radar**
- **2015 Full cockpit enclosure, hunter green**
- **2015 Solar power panel system**
- **Electric halyard winch**

---

## Basic Information

---

**Category:** Cruising Sailboat

**Model Year:** 2000

**Year Built:** 2000

**Country:** United States

---

## Dimensions

---

**LOA:** 46' 0" (14.02m)

**LWL:** 39' 11" (12.17m)

**Beam:** 13' 11" (4.24m)

**Min Draft:** 5' 7" (1.70m)

**Clearance:** 59' 1" (18.01m)

---

## Speed, Capacities and Weight

---

**Cruise Speed:** 6 Kts. (7 MPH)

**Cruise Speed RPM:** 2500 Kts.

**Max Speed:** 7 Kts. (8 MPH)

**Displacement:** 21000 Pounds

**Water Capacity:** 210 Gallons

**Holding Tank:** 15 Gallons

**Fuel Capacity:** 53 Gallons

---

## Accommodations

---

**Total Cabins:** 2

**Total Berths:** 2

**Total Heads:** 2

---

## Hull and Deck Information

---

**Hull Material:** Fiberglass

**Hull Configuration:** Bulb Keel

---

## Engine Information

---

**Engines:** 1

**Manufacturer:** Westerbeke

**Model:** 63-64

**Engine Type:** Inboard

**Fuel Type:** Diesel

---

# DETAILED INFORMATION

---

## Features

---

### COCKPIT:

On any yacht, the cockpit is the most important space aboard. It is where you spend the majority of your day whether it is sailing, relaxing, or enjoying a nice evening meal aboard. The Beneteau 461 design does a great job of providing a spacious and functional area especially with the yacht's beam carried so far aft. The 8ft. long cockpit seating offers plenty of space for sailing, entertaining, or having dinner. A new Garmin chart plotter with new radar was installed at the helm in 2015. All of the running rigging leads aft to the cockpit, making single-handing a breeze, especially with autopilot and an electric halyard winch.

- 8 ft. long cockpit seating
- Large centerline cockpit table with folding leaves
- Cockpit table storage compartment
- Large steering pedestal with 42' wheel
- 2015 Garmin GPSMap 741xs chart plotter
- Garmin radar
- Raytheon Pathfinder RL70C
- Raytheon ST6000+ autopilot
- Raytheon ST60 Tridata
- Raytheon ST60 wind instrument
- Olympic 135 compass
- TFX throttle to starboard
- Standard Horizon deck mic at helm
- Westerbeke engine panel to port
- Lewmar ST54 primary winches, reachable from helm
- Lewmar 40 halyard winches at cabintop, (1) electric to port
- (2) propane tanks in port aft locker
- (2) Deep storage lockers to starboard
- Full enclosure: bimini, dodger, side panels, screens (new in 2015)
- Teak cockpit seating
- Teak dry deck at helm
- Cockpit shower
- Custom bimini tubing to support (2) Solar panels above
- Outboard motor mount
- Outboard motor lift
- Stern mounted Rutland 913 wind generator
- Stainless steel swim ladder to starboard

### DECKS

The beamy 461 features a very spacious cockpit that offers easy access to the wide side decks. 36" stanchions, lifelines, teak grab rails along the cabintop and jack line hookups allow for easy maneuverability in various conditions. The full cockpit enclosure was redone in 2015 and a solar panel system was installed above the bimini framing.

- Simpson Lawrence Horizon express windlass
- 45# Rocna anchor with chain
- 35# CQR with chain
- Non-skid decks
- Opening Lewmar hatches
- Stainless steel stanchions and lifelines
- LED navigation lights
- Mast pulpit for support while standing on deck
- Natural teak grab rails leading forward along cabintop
- (2) Dorades forward of dodger
- New canvas enclosure 2015, hunter green
- Rutland 913 wind generator mounted at stern
- Outboard motor lift mounted at wind generator pole
- Outboard motor mount, starboard stern rail
- Fold-down swim ladder at swim platform
- Added bimini structure to support (2) solar panels
- (6) Rail mounted cleats

## **MAIN SALON:**

The main salon offers a large and comfortable interior space for lounging at the end of a cruising day. The gourmet galley lies to starboard, nav station to port, and the spacious main salon takes great advantage of the almost 14' beam. Reverse-cycle marine air conditioning and heat keep the salon cozy year round.

- Large U shaped settee to starboard, 7 ft. long
- Port settee – 5'8" long
- Large fixed center bench for added seating and storage
- Mahogany table comfortably seats 6-8 people
- Cushions new in 2016 – light green
- 4 deep storage lockers
- 4 opening overhead Lewmar hatches
- 4 fixed side ports
- 6 overhead lights
- 26" mounted Vizio flat screen TV (2014)
- Curtis DVD player
- Reverse-cycle air conditioning & heat
- Grab rails leading forward along cabintop
- Howard Miller brass barometer

- 4 storage shelves
- Large forward shelf cabinet to port forward of settee
- (2) JVC speakers for stereo
- 2 120v outlets

## **GALLEY:**

The large gourmet galley is aft of the salon just inside the companionway hatch. With storage cabinets along the starboard hull, a gimballed three-burner propane stove, two Adler Barbour refrigeration compartments, microwave and an ample amount of counter space, any cook will be at home in the Beneteau 461 galley.

- Adler Barbour refrigeration – top and side loading
- Large double-sided stainless steel sink
- Force 10 Marine gimballed 3-burner stove and oven
- Designated trash compartment – tall kitchen size
- Deep storage below counter – top loading
- 2 overhead lights
- Task lighting above sink
- GE microwave
- 3 storage cabinets below counter
- (2) shelves above cabinetry

## **NAV STATION:**

The nav station is located just inside the companionway hatch allowing for easy communication from the chart table to the helm. A Raytheon RC520 chart plotter is located at the nav station for course plotting from below.

- Aft facing with 2ft chart table
- Raytheon RC520 chart plotter
- Raytheon ST60 multifunction display
- Standard Horizon Nova+ VHF
- Xantrex LinkLITE battery monitoring panel
- BASS Beneteau DC electric panel, above chart table
- (2) BASS Beneteau AC electric panel, below chart table
- JVC stereo with handheld remote
- Opening side port
- (2) 120V outlets
- 1 overhead light
- Lower storage shelf
- 1 overhead storage shelf

## **FORWARD CABIN:**

The forward owner's cabin features an easy-access centerline queen berth with private settees to starboard and port. The cabin also features a private en suite head to starboard. Opening side and overhead ports allow plenty of natural light and ventilation and reverse-cycle marine air conditioning and heat keep the cabin comfortable in any climate.

- Comfortable centerline queen with 4" foam
- 4 ft. long seating along port side
- Large hanging locker to port
- (2) deep storage cabinets
- (2) large shelves running forward along hull
- (2) overhead lights
- (2) Personal reading lights
- (2) Pullout drawers below bed
- (3) Overhead opening hatches
- Reverse-cycle marine air conditioning & heat

## EN SUITE HEAD

- (2) Opening hatches
- Mirror vanity with storage
- Electric marine head with folding shower seat
- Single vanity with pullout showerhead faucet
- Overhead light
- Dry storage below sink

## AFT CABIN:

The aft cabin entrance lies to the port of the companionway hatch. It features a double berth, air conditioning, plenty of storage and natural light as well as direct access from the aft cabin to the aft head. The aft berth is a comfortable place for sleeping while under way.

- Large double aft berth (6'x7'), with 4" foam
- Upholstery refinished 2016
- (3) overhead opening hatches for ventilation, natural light
- (2) personal reading lights
- Reverse-cycle marine air conditioning & heat
- Large hanging locker to port
- (2) large storage shelves
- Access from stateroom to head
- (2) 120V outlets

## AFT HEAD:



- Jabsco manual head
- Single vanity with storage below
- Vanity mirror with storage behind
- Opening side port for ventilation
- (1) Overhead light
- Retractable vanity faucet becomes showerhead

## **ELECTRICAL:**

- Blue Sky Energy solar panel power control – Solar Boost 2512i-HV (2015)
- (2) 125 watt solar panels, new in 2015
- (3) Deep Cycle 4D AGM batteries (2013)
- Maltec smart battery regulator
- Inverter with monitor panel in aft cabin??
- Rutland 913 Wind generator
- (2) 30amp shore power hookups at swim platform
- 12V and 120V electric panel at nav station
- Xantrex LinkLite battery monitoring system
- Battery Charger
- Alternator (size?)

## **MECHANICAL:**

- 63 hp Westerbeke 63-C4 - HBW 250 - Serial : 414744-D905
- 1,947 hours (5/23/17)
- Replaced alternator model 12751N
- Racor dripless fuel filter
- Katadyn PowerSurvivor 40E water maker
- 2-zone air conditioning/heat
- Fixed three blade prop

---

## **Exclusions**

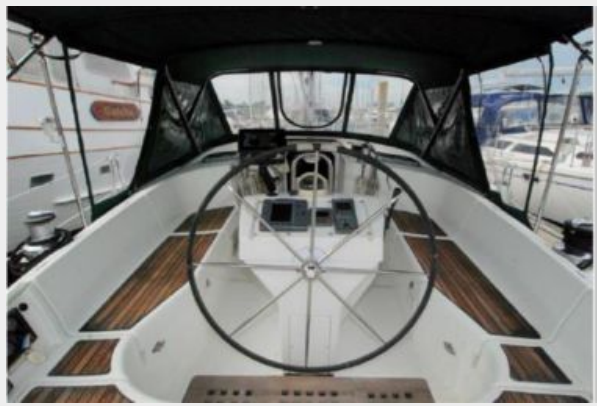
Owner's personal belongings.

---

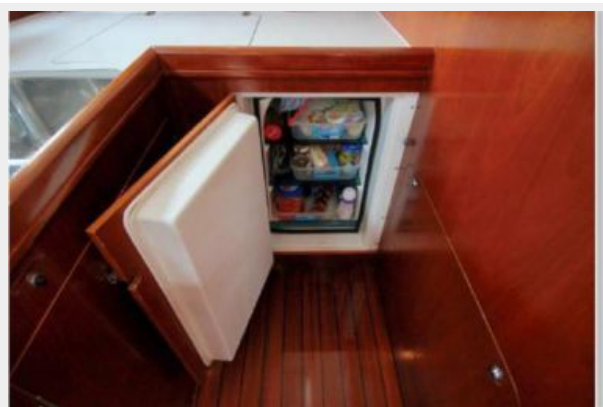
## **Disclaimer**

The Company offers the details of this vessel or yacht in good faith but cannot guarantee or warrant the accuracy of this information nor warrant the condition of the vessel. A buyer should instruct his representatives, agents, or his surveyors, to investigate such details as the buyer desires validated. This vessel or yacht is offered subject to prior sale, price change, or withdrawal without notice.

# PHOTOS

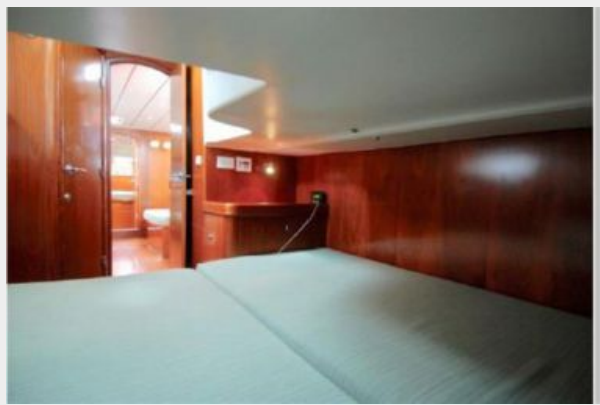
















---

# CONTACTS

---

Andrey Shestakov, leading yacht broker of the sales department of Shestakov Yacht Sales Inc. Shestakov Yacht Sales Inc., the official representative of the Miami/Fort Lauderdale FL headquarters.

---

## Contact details

---

Email: [andrey@shestakovyachtsales.com](mailto:andrey@shestakovyachtsales.com)

Web: [shestakovyachtsales.com/en/](http://shestakovyachtsales.com/en/)

---

## Telephones

---

USA: +1(954)274-4435

---

## Office hours

---

Monday – Saturday: **9:00 - 21:00** EDT

Sunday: **closed**

---

## Address

---



Harbour Towne Marina, 850 NE 3rd St,  
STE 213, Dania, FL 33004