

46 2000 BENETEAU 461 — BENETEAU



Судостроитель: BENETEAU

Год постройки: 2000

Модель: Крейсерская яхта

Цена: **ЦЕНА ЯХТЫ ПО ЗАПРОСУ**

Местонахождение: United States

Длина общая: 46' 0" (14.02m)

Ширина: 13' 11" (4.24m)

Мин. осадка: 5' 7" (1.70m)

Крейс. скорость: 6 Kts. (7 MPH)

Макс. скорость: 7 Kts. (8 MPH)

Купить 46 2000 Beneteau 461 — BENETEAU а также выбрать подходящую вам яхту из нашего каталога яхт вам поможет опытный яхтенный брокер Андрей Шестаков. На сегодняшний день компания Shestakov Yacht Sales Inc. имеет большое количество яхт в собственном списке продаж, а также тесно сотрудничает со всеми крупными яхтенными производителями по всему миру.

Для того чтобы купить яхту 46 2000 Beneteau 461 — BENETEAU а также проконсультироваться по любому вопросу связанному с покупкой, продажей, чартером яхт позвоните по телефону **+7(918)465-66-44**.

ОГЛАВЛЕНИЕ

ОГЛАВЛЕНИЕ	2
ХАРАКТЕРИСТИКИ	3
Обзор	3
Основная информация	3
Размеры	3
Скорость, вместимость и масса	4
Размещение	4
Корпус и палуба	4
Информация о двигателе	4
ПОДРОБНОЕ ОПИСАНИЕ	5
Features	5
Исключения	9
Отказ от ответственности	9
ФОТОГРАФИИ	11
КОНТАКТЫ	18
Контактная информация	18
Телефоны	18
Время работы	18
Адрес	18

ХАРАКТЕРИСТИКИ

Обзор

Designed by Bruce Farr and Armel Briand, ОКЕМАН ROSE is a well-maintained 2 cabin Beneteau 461. She is the perfect size for bay and coastal cruising with all the amenities you'll need for weekend or extended voyages. With reverse-cycle marine air-conditioning and heat, updated solar system, full enclosure, dual refrigeration, a beamy cockpit, and a comfortable centerline queen in the forward owner's cabin, the Beneteau 461 offers very comfortable interior and exterior spaces.

Beneteau is the world's largest producer of yachts. The 461 is part of the Beneteau Oceanis line of cruising yachts. First built in 1996, it is available in 4 different layouts ranging from the two-cabin owner's version to a four-cabin charter version.

HIGHLIGHTS:

- Reverse-cycle marine air conditioning and heat
- Two cabin, two head layout with gourmet galley
- New sails in 2012, in-mast main sail
- 2015 Garmin GPSmap 741x chart plotter and radar
- 2015 Full cockpit enclosure, hunter green
- 2015 Solar power panel system
- Electric halyard winch

Основная информация

Тип судна: Крейсерская яхта

Модельный год: 2000

Год постройки: 2000

Страна: United States

Размеры

Длина общая: 46' 0" (14.02m)

Длина по ватерлинии: 39' 11" (12.17m)

Ширина: 13' 11" (4.24m)

Мин. осадка: 5' 7" (1.70m)

Трапы: 59' 1" (18.01m)

Скорость, вместимость и масса

Крейс. скорость: 6 Kts. (7 MPH)

Крейсерская скорость поворота: 2500 Kts.

Макс. скорость: 7 Kts. (8 MPH)

Водоизмещение: 21000 Pounds

Вместимость воды: 210 Gallons

Вместимость сточного бака: 15 Gallons

Объем топливного бака: 53 Gallons

Размещение

Всего кают: 2

Всего коек: 2

Всего ком. состава: 2

Корпус и палуба

Материал корпуса: Fiberglass

Комплектация корпуса: Bulb Keel

Информация о двигателе

Двигатели: 1

Производитель: Westerbeke

Модель: 63-64

Тип двигателя: Inboard

Тип топлива: Diesel

ПОДРОБНОЕ ОПИСАНИЕ

Features

СОСКРИТ:

On any yacht, the cockpit is the most important space aboard. It is where you spend the majority of your day whether it is sailing, relaxing, or enjoying a nice evening meal aboard. The Beneteau 461 design does a great job of providing a spacious and functional area especially with the yacht's beam carried so far aft. The 8ft. long cockpit seating offers plenty of space for sailing, entertaining, or having dinner. A new Garmin chart plotter with new radar was installed at the helm in 2015. All of the running rigging leads aft to the cockpit, making single-handing a breeze, especially with autopilot and an electric halyard winch.

- 8 ft. long cockpit seating
- Large centerline cockpit table with folding leaves
- Cockpit table storage compartment
- Large steering pedestal with 42' wheel
- 2015 Garmin GPSMap 741xs chart plotter
- Garmin radar
- Raytheon Pathfinder RL70C
- Raytheon ST6000+ autopilot
- Raytheon ST60 Tridata
- Raytheon ST60 wind instrument
- Olympic 135 compass
- TFX throttle to starboard
- Standard Horizon deck mic at helm
- Westerbeke engine panel to port
- Lewmar ST54 primary winches, reachable from helm
- Lewmar 40 halyard winches at cabintop, (1) electric to port
- (2) propane tanks in port aft locker
- (2) Deep storage lockers to starboard
- Full enclosure: bimini, dodger, side panels, screens (new in 2015)
- Teak cockpit seating
- Teak dry deck at helm
- Cockpit shower
- Custom bimini tubing to support (2) Solar panels above
- Outboard motor mount
- Outboard motor lift
- Stern mounted Rutland 913 wind generator
- Stainless steel swim ladder to starboard

DECKS

The beamy 461 features a very spacious cockpit that offers easy access to the wide side decks. 36" stanchions, lifelines, teak grab rails along the cabintop and jack line hookups allow for easy maneuverability in various conditions. The full cockpit enclosure was redone in 2015 and a solar panel system was installed above the bimini framing.

- Simpson Lawrence Horizon express windlass
- 45# Rocna anchor with chain
- 35# CQR with chain
- Non-skid decks
- Opening Lewmar hatches
- Stainless steel stanchions and lifelines
- LED navigation lights
- Mast pulpit for support while standing on deck
- Natural teak grab rails leading forward along cabintop
- (2) Dorades forward of dodger
- New canvas enclosure 2015, hunter green
- Rutland 913 wind generator mounted at stern
- Outboard motor lift mounted at wind generator pole
- Outboard motor mount, starboard stern rail
- Fold-down swim ladder at swim platform
- Added bimini structure to support (2) solar panels
- (6) Rail mounted cleats

MAIN SALON:

The main salon offers a large and comfortable interior space for lounging at the end of a cruising day. The gourmet galley lies to starboard, nav station to port, and the spacious main salon takes great advantage of the almost 14' beam. Reverse-cycle marine air conditioning and heat keep the salon cozy year round.

- Large U shaped settee to starboard, 7 ft. long
- Port settee – 5'8" long
- Large fixed center bench for added seating and storage
- Mahogany table comfortably seats 6-8 people
- Cushions new in 2016 – light green
- 4 deep storage lockers
- 4 opening overhead Lewmar hatches
- 4 fixed side ports
- 6 overhead lights
- 26" mounted Vizio flat screen TV (2014)
- Curtis DVD player
- Reverse-cycle air conditioning & heat
- Grab rails leading forward along cabintop
- Howard Miller brass barometer

- 4 storage shelves
- Large forward shelf cabinet to port forward of settee
- (2) JVC speakers for stereo
- 2 120v outlets

GALLEY:

The large gourmet galley is aft of the salon just inside the companionway hatch. With storage cabinets along the starboard hull, a gimbaled three-burner propane stove, two Adler Barbour refrigeration compartments, microwave and an ample amount of counter space, any cook will be at home in the Beneteau 461 galley.

- Adler Barbour refrigeration – top and side loading
- Large double-sided stainless steel sink
- Force 10 Marine gimbaled 3-burner stove and oven
- Designated trash compartment – tall kitchen size
- Deep storage below counter – top loading
- 2 overhead lights
- Task lighting above sink
- GE microwave
- 3 storage cabinets below counter
- (2) shelves above cabinetry

NAV STATION:

The nav station is located just inside the companionway hatch allowing for easy communication from the chart table to the helm. A Raytheon RC520 chart plotter is located at the nav station for course plotting from below.

- Aft facing with 2ft chart table
- Raytheon RC520 chart plotter
- Raytheon ST60 multifunction display
- Standard Horizon Nova+ VHF
- Xantrex LinkLITE battery monitoring panel
- BASS Beneteau DC electric panel, above chart table
- (2) BASS Beneteau AC electric panel, below chart table
- JVC stereo with handheld remote
- Opening side port
- (2) 120V outlets
- 1 overhead light
- Lower storage shelf
- 1 overhead storage shelf

FORWARD CABIN:

The forward owner's cabin features an easy-access centerline queen berth with private settees to starboard and port. The cabin also features a private en suite head to starboard. Opening side and overhead ports allow plenty of natural light and ventilation and reverse-cycle marine air conditioning and heat keep the cabin comfortable in any climate.

- Comfortable centerline queen with 4" foam
- 4 ft. long seating along port side
- Large hanging locker to port
- (2) deep storage cabinets
- (2) large shelves running forward along hull
- (2) overhead lights
- (2) Personal reading lights
- (2) Pullout drawers below bed
- (3) Overhead opening hatches
- Reverse-cycle marine air conditioning & heat

EN SUITE HEAD

- (2) Opening hatches
- Mirror vanity with storage
- Electric marine head with folding shower seat
- Single vanity with pullout showerhead faucet
- Overhead light
- Dry storage below sink

AFT CABIN:

The aft cabin entrance lies to the port of the companionway hatch. It features a double berth, air conditioning, plenty of storage and natural light as well as direct access from the aft cabin to the aft head. The aft berth is a comfortable place for sleeping while under way.

- Large double aft berth (6'x7'), with 4" foam
- Upholstery refinished 2016
- (3) overhead opening hatches for ventilation, natural light
- (2) personal reading lights
- Reverse-cycle marine air conditioning & heat
- Large hanging locker to port
- (2) large storage shelves
- Access from stateroom to head
- (2) 120V outlets

AFT HEAD:

- Jabsco manual head
- Single vanity with storage below
- Vanity mirror with storage behind
- Opening side port for ventilation
- (1) Overhead light
- Retractable vanity faucet becomes showerhead

ELECTRICAL:

- Blue Sky Energy solar panel power control – Solar Boost 2512i-HV (2015)
- (2) 125 watt solar panels, new in 2015
- (3) Deep Cycle 4D AGM batteries (2013)
- Maltec smart battery regulator
- Inverter with monitor panel in aft cabin??
- Rutland 913 Wind generator
- (2) 30amp shore power hookups at swim platform
- 12V and 120V electric panel at nav station
- Xantrex LinkLite battery monitoring system
- Battery Charger
- Alternator (size?)

MECHANICAL:

- 63 hp Westerbeke 63-C4 - HBW 250 - Serial : 414744-D905
- 1,947 hours (5/23/17)
- Replaced alternator model 12751N
- Racor dripless fuel filter
- Katadyn PowerSurvivor 40E water maker
- 2-zone air conditioning/heat
- Fixed three blade prop

Исключения

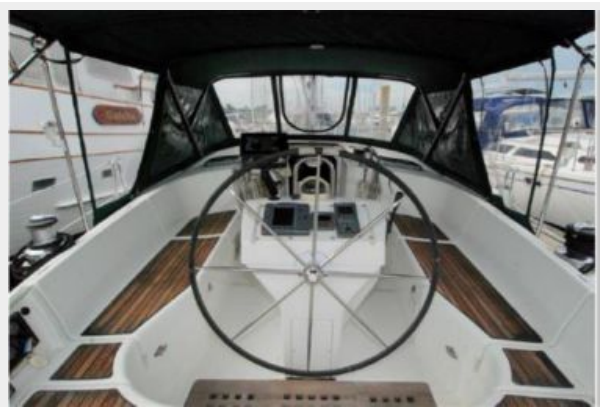
При продаже яхты исключаются личные вещи владельца.

Отказ от ответственности

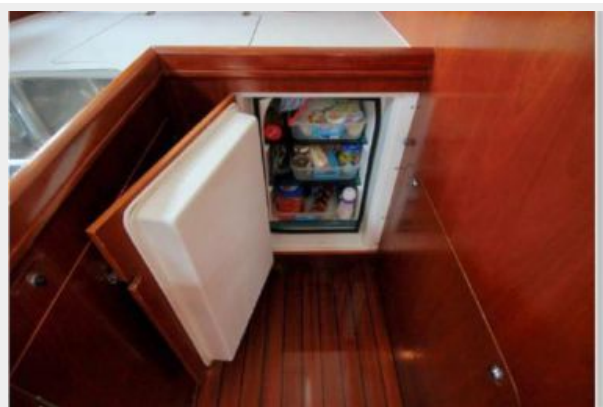
Компания предоставляет описание судна или яхты добросовестно, но не может гарантировать точность этой информации, а также не ручается за техническое состояние. Покупатель должен проинструктировать своих агентов или оценщиков исследовать представленную информацию более подробно, по собственному желанию. Продажа судна или яхты, изменение цены или снятие с продажи будет происходить без

предварительного уведомления.

ФОТОГРАФИИ

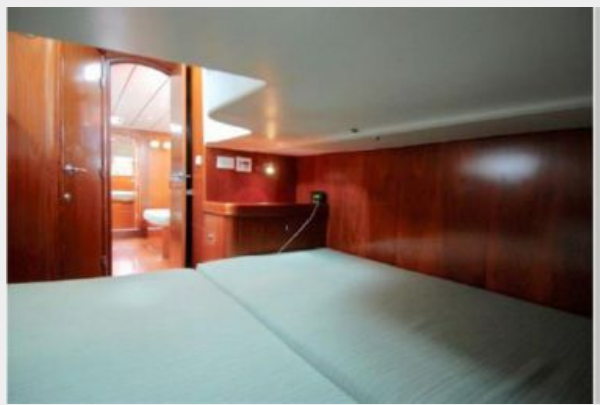
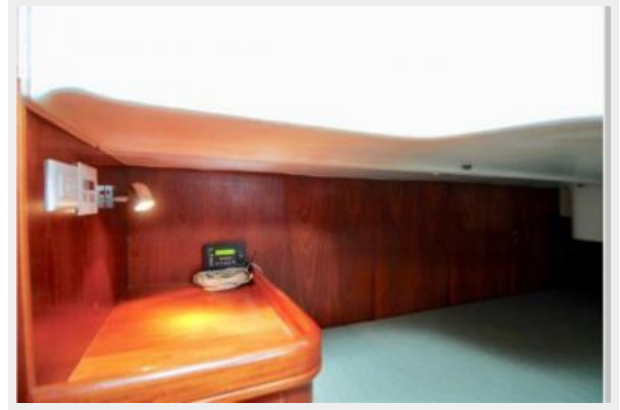














КОНТАКТЫ

Андрей Шестаков (Andrey Shestakov) – ведущий яхтенный брокер отдела продаж яхт и судов компании Shestakov Yacht Sales Inc. Официальный представитель Shestakov Yacht Sales Inc. для русскоговорящих клиентов в центральном офисе компании в Майами/Форт Лодердейл/Флорида/США.

Контактная информация

Email: **andrey@shestakovyachtsales.com**

Web: shestakovyachtsales.com

Телефоны

Краснодарский край: **+7(918)465-66-44**

США, Майами, Флорида: **+1(954)274-4435**

Время работы

Понедельник – Суббота: **9:00 - 21:00**
EDT

Воскресенье: **Закрито**

Адрес



Harbour Towne Marina, 850 NE 3rd St,
STE 213, Dania, FL 33004