

TARLA — HANSE



Судостроитель: HANSE

Год постройки: 2012

Модель: Представительская парусная яхта

Цена: ЦЕНА ЯХТЫ ПО ЗАПРОСУ

Местонахождение: United States

Длина общая: 44' 0" (13.41m)

Ширина: 14' 4" (4.37m)

Макс. осадка: 7' 4" (2.24m)

Крейс. скорость: 8 Kts. (9 MPH)

Купить **TARLA — HANSE** а также выбрать подходящую вам яхту из нашего каталога яхт вам поможет опытный яхтенный брокер Андрей Шестаков. На сегодняшний день компания **Shestakov Yacht Sales Inc.** имеет большое количество яхт в собственном списке продаж, а также тесно сотрудничает со всеми крупными яхтенными производителями по всему миру.

Для того чтобы купить яхту **TARLA — HANSE** а также проконсультироваться по любому вопросу связанному с покупкой, продажей, чартером яхт позвоните по телефону **+7(918)465-66-44**.

ОГЛАВЛЕНИЕ

ОГЛАВЛЕНИЕ	2
ХАРАКТЕРИСТИКИ	3
Обзор	3
Основная информация	4
Размеры	4
Скорость, вместимость и масса	4
Размещение	4
Корпус и палуба	5
Информация о двигателе	5
ПОДРОБНОЕ ОПИСАНИЕ	6
Features	6
Исключения	15
Отказ от ответственности	15
ФОТОГРАФИИ	16
Manufacturer Provided Image	16
Manufacturer Provided Image	16
Manufacturer Provided Image	16
Manufacturer Provided Image	16
КОНТАКТЫ	25
Контактная информация	25
Телефоны	25
Время работы	25
Адрес	25

ХАРАКТЕРИСТИКИ

Обзор

Welcome to STARLA, our 2012 Hanse 445

Simply put, she does everything well. She's come from across the pond, originally from the London Boat Show of 2012. Her pedigree and design focus on fast passage making. Check out her numerous amenities. Here are some highlights:

- **Stout fractional wide-spreader tapered rig**
- **Powerful sail plan with fully battened slab reefed main and 106% self-tacking working jib**
- **Twin wheel cockpit design splitting the 'working' helms away from the 'lounging' cockpit**
- **Single-handed sailing is a piece of cake and a joy on this yacht**
- **Electric primaries receive ALL submerged running rigging at either helm**
- **Bow thruster makes docking a cinch**
- **7'-4" offshore performance fin keel with torpedo bulb ballast**
- **Super wide swim platform drops to the water for easy boarding from the dock or your tender**
- **Upgraded teak decks (vacuum bag epoxied, NOT screwed down)**
- **55hp Volvo diesel sail drive with folding prop (814 hours)**
- **4kW genset (1280 hours) keeps you well supplied with power**
- **Electronically controlled task, indirect, and general lighting throughout**
- **Mahogany interior with off white upholstery**
- **Three-berth layout with massive owner's cabin forward**
- **Two heads (owners is split to port and starboard)**
- **Modern electronics and communications**
- **RIB Dinghy/9.8hp Tohatsu 4-stroke outboard**

Conclusion from a well-known yacht reviewer from Yachting World Magazine in May 2011 :

"The Hanse 445 is aimed at a couple who would like to entertain in superior space and a modern setting. Many features in her lofty interior show off a smart angular style, one that will sell well in the showroom but be prepared for some bruises at sea."

Hanse Company History

Founded in 1990 and based in Greifswald, Germany, Hanse Yachts is the second largest builder of cruising yachts in the world. They build performance cruisers from 31' up to 68' and enjoy worldwide popularity. Naval architects, Rolf Vrolijk & Fietje Judel, teamed up in 1978 and began developing ocean capable performance yachts. In fact, Rolf Vrolijk came to some prominence designing the America's Cup yacht, ALINGHI, that won the famed series in 2003. Over the last 38 years, Judel/Vrolijk have become well known premier yacht designers of yachts up to 300' in

length. Their design mantra continues to be the creation of fast, safe, comfortable ocean-crossing cruisers, easily handled by minimal crew.

NOTE ABOUT REGISTRY: Owner will import the vessel to US registry for a US buyer as part of the purchase process.

Основная информация

Тип судна: Представительская парусная яхта Модельный год: 2012

Год постройки: 2012

Страна: United States

Размеры

Длина общая: 44' 0" (13.41m)

Длина по ватерлинии: 40' 2" (12.24m)

Длина палубы: 43' 9" (13.34m)

Ширина: 14' 4" (4.37m)

Макс. осадка: 7' 4" (2.24m)

Трапы: 68' 7" (20.90m)

Скорость, вместимость и масса

Крейс. скорость: 8 Kts. (9 MPH)

Крейсерская скорость поворота: 2800 Kts.

Водоизмещение: 24250 Pounds

Вместимость воды: 120 Gallons

Объем топливного бака: 58 Gallons

Размещение

Всего кают: 3

Всего коек: 4

Всего ком. состава: 2

Корпус и палуба

Материал корпуса: Composite

Отделка корпуса: Plastic

Дизайнер корпуса: judel / vrolijk & co

Информация о двигателе

Двигатели: 1

Производитель: Volvo Penta

Модель: D2-55

Тип двигателя: Sail Drive

Тип топлива: Diesel

ПОДРОБНОЕ ОПИСАНИЕ

Features

2012 HANSE 445 OVERVIEW

This 2012 Hanse 445, hull #91, (available today as the 455) has been their most successful model to date. She's a nimble performance cruiser capable of crossing oceans quickly and safely. STARLA was ordered at the annual London, UK boat show in the winter of 2012. She was commissioned that spring and spent her early days cruising around the North Atlantic and North Sea off the British coast. She crossed the pond a year ago and has been exploring east coast destinations until just recently when she was brought to Annapolis to sell. Her self-tacking sail plan and athletic performance, along with a spacious three-stateroom layout with abundant storage all add up to a 'go-anywhere' yacht ready for her next adventure.

HANSE PERFORMANCE

These are fast boats, plain and simple. 12-14 knots of wind brings you quickly into the high 7 knot range and bigger puffs will bring you to a happy place in the mid-8's. She's super solid in choppy seas and her straight fin/bulb keel allows for minimum drift when beating upwind. No early reefing on this yacht. She just digs in and accelerates.

Vertical hull entry at the bow and abundant freeboard all the way aft keep you high and dry anywhere on deck. She knives through the water with poise and her ample bulk and displacement maintain a smooth ride even in choppy seas. Her rig is super stout with wider than typical spreaders that bring her shrouds down to the outside of the hull, providing stiffness that helps you point even higher during upwind work. Lewmar 48 electric primary winches next to both wheels make for push-button sailing in all conditions.

HANSE INNOVATION

Easily manageable by one or two crew, tacking this boat up wind is so simple. Roll out her self-tacking working jib, set it and forget it. All you need do is turn the wheel with each tack and of you go. All running rigging leads aft, not just to the cockpit area, but specifically to the helmsman at either of her twin helms. To keep the decks free and clear of clutter and tripping hazards, lines disappear beneath the deck aft of the base of the mast and re-emerge at two sets of line clutches on both port and starboard. The mainsheet as well is brilliantly set up as a pair of lines that come to both port and starboard helms so you can adjust from either station. A big advantage? Your guests throughout the rest of the cockpit can relax and enjoy the ride without need to get involved in driving the boat. There aren't any winches or lines forward of the twin wheels. You've got the working aft end of the cockpit and lots of lounging space everywhere else. It's an amazing evolution in sailing.

Her twin wheels and extreme beam carry all the way aft, along with a super-wide drop down

swim platform keep her cockpit wide open for crew and guests. Her low cabin top provides expansive views forward from anywhere in the cockpit.

Stepping below decks, she's cavernous with wide passageways, comfortable seating, a spacious galley, two equal aft double sleeping berths, two heads, and an incredible owner's suite forward. High ceilings, electronic dimmable recessed lighting, large opening ports everywhere possible, and sumptuous mahogany toned joinery throughout all help make this pond-crossing machine a joy to use.

HANSE CONSTRUCTION

The 445's hull is solid hand-laid fiberglass throughout, with a vinylester skin to prevent blistering. The deck laminate is balsa core. A fiberglass 'strongback' framework is bonded to the hull to help carry keel and rig loads, and the boat's main bulkhead is securely laminated to the hull and deck to provide additional structural integrity. She came with two keels, the 5'-8" shoal keel, and the performance, off-shore 7'-4" deep fin keel which this boat has. There's a long torpedo-like ballast bulb at the bottom. Her rig is double-spreader with a tapered aluminum mast that can handle a masthead spinnaker. Her slab-reefed, fully battened main with lazy jacks and her 106% self-tacking blade jib keep her powerful yet so simple to handle by one or two crew.

EXTERIOR TOUR

Stepping aboard into Starla's spacious cockpit from the large fold-down swim platform, you will find a functional space that still offers comfort while cruising or entertaining. The twin wheel design opens up the passage space through the cockpit and creates a practical seating space for the helmsman on any tack. A large centerline folding cockpit table offers a great space for entertaining as well as a comfortable and place to brace your feet during an athletic day of sailing. The cockpit and decks have the upgraded Hanse teak package. All of the rigging leads aft to the primary and secondary winches, which can both be reached from the helms; this makes for easy single-handing! A bimini and dodger provide shade and protection. The wide teak decks offer an unobstructed passageway up to the bow.

- Twin wheel cockpit layout allows for easy passage
- Spacious aft cockpit comfortably seats 6 people
- High cockpit coamings offer comfortable lounge space
- Centerline folding teak cockpit table, great for entertaining and support under way
- All rigging leads aft through recess in coamings to the helms
- Electric primary winches, can be reached from helm
- Instruments, chart plotter, bow thruster, autopilot & windlass controls all at helm
- Large bimini and dodger provide shade and protection from weather
- Upgraded Hanse teak package with teak cockpit floor, seating, and decks
- Wide decks are unobstructed and offer easy passage forward
- All rigging leads aft for easy single-handing (plus the self-tacking headsail!)
- (6) Hanse spring cleats recess into the side decks when not in use

- Stainless steel handrails leading forward along cabintop
- Cockpit storage lockers to port and starboard
- Forward sail locker at bow for additional deep storage
- Windlass in anchor locker
- 44lb Delta with 260ft. of chain
- 48lb CQR with 260ft. of chain
- Stainless steel stanchions and lifelines
- Large folding swim platform stretches across entire stern
- Dinghy davits and outboard motor mount on aft rail - Simpson Davits
- Retractable spring cleats
- Signal white gelcoat hull with dark grey stripes
- Jacklines - webbing and win chard dee shackle
- Winch handle pockets

COCKPIT TOUR

Every sailor spends the majority of their time aboard in the cockpit, making it an essential feature in the design process of any yacht. Hanse has designed a cockpit that is versatile with a rigging system that makes single-handing from the helm a breeze, but also allows for tons of room for entertaining guests and lounging. The twin helm layout allows for easy passage from the large fold-down swim platform all the way through to the centerline companionway hatch. The Hanse 445 carries its 14'4" beam aft allowing for an extra wide cockpit that can comfortably seat six. Wide cockpit coamings lead aft to each helm, housing all of the running rigging, back to a set of 5 line stoppers on each side. Electric primary winches and manual secondaries are all reachable from the helms. A large drop-leaf cockpit table provides the perfect setting for entertaining. The table's stainless steel handrails and foot rail provide a sturdy support during athletic sailing. The Simrad NSS8 chart plotter is mounted in the aft end of the cockpit table so it can be easily accessed from either helm. The Simrad autopilot AP24 control panel, Simrad IS20 multifunction display, and bow thruster control are all located at the starboard helm as well as the engine panel and throttle control. Another Simrad IS20 multi-function display is at the port helm right next to a Simrad IS20 wind instrument.

- Beamy aft cockpit is easily accessible via a large fold-down swim platform
- Twin helm layout offers easy passage from stern to companionway
- Cockpit seating comfortably seats 6
- High cockpit coamings offer comfortable back rest for lounging
- Large centerline folding cockpit table with stainless steel hand rail and foot brace
- Teak cockpit seating, cockpit floor and swim platform
- Leather wrapped twin helms
- Large dodger and bimini for shade and protection - Light grey

COCKPIT ELECTRONICS:

- Simrad NSS8 chart plotter at cockpit table-end, accessible from both helms
- STARBOARD HELM:

- Simrad AP24 autopilot control
- Simrad IS20 multifunction display
- Bow thruster control
- Engine throttle and engine panel
- Emergency waler/gusher
- Winch handle storage pocket
- PORT HELM:
- Simrad IS20 multi-function display
- Simrad IS20 wind indicator instrument
- Winch handle storage pocket
- Electric primary winch at each helm, make single-handing easy
- Secondary winches at cockpit coaming
- All running rigging leads aft through recessed area in coamings
- (5) Line stoppers at each helm for running rigging
- GPS mounted at port cockpit coaming
- Ontest 130 compass mounted below chart plotter
- All rigging controllable from cockpit, including self-tacking head sail
- White bimini and dodger provides shade and weather protection
- Simpson stainless steel dinghy davits
- Outboard motor mount on starboard stern rail
- Lifesling and man-overboard pole mounted on port stern rail
- (4) cup holders recessed into cockpit seating forward of both helms
- Propane locker and (2) cockpit storage lockers
- Marine stereo speakers

INTERIOR TOUR

Stepping down below through the centerline companionway, you enter the main salon and galley. The interior of the Hanse 445 offers spacious cabins and lounge areas that make cruising a relaxing and enjoyable experience. Hanse takes their design quality a step above with thick cabinetry doors, plush upholstery, and ample natural light through large opening Lewmar ports and hatches. The interior design offers an attractive and functional space with a large salon for entertaining, a gourmet galley, storage throughout the yacht, a spacious owner's cabin forward and two quarter-berth cabins aft, and a large head with plenty of elbowroom for showering. With 6'6" of headroom and a 14'4" beam, the Hanse 445's interior is quite spacious. The private owner's suite forward of the main salon offers a quiet retreat away from guests after a long day of cruising with a private en-suite head and tons of storage.

- Three-cabin, two-head layout
- Reverse-cycle marine air conditioning and heat, 2-zone 12,000BTU & 8,000BTU
- Gourmet galley with great storage and isotherm refrigeration
- Large salon with U-shaped seating to starboard, comfortably seats 6
- Aft-facing navigation station to port
- Aft head to port of companionway with separate shower space

- Two aft quarter-berths, both with hanging locker storage
- Private owner's suite forward with centerline berth and private head
- Cherry interior cabinetry
- Euro styling with white bulkheads that brighten the interior space
- LED lighting throughout, energy efficient
- 6'6" headroom
- Opening hatches and large ports for ventilation and tons of natural light
- Smart lighting system with touch control pad for customized lighting
- Ample storage throughout
- Fusion stereo with handheld device USB dock
- Navigation station to port, aft facing with 2ft. wide chart table
- Folding salon table doubles in size, storage below
- Portable bench seating below nav station doubles as extra salon seating

MAIN SALON

The main salon captures Hanse's clean and modern design aesthetic with crisp lines, large ports for tons of natural light, spacious seating and cherry cabinetry, providing a warm and inviting place to rest and entertain after a fun day of sailing. A large U-shaped settee to starboard can be converted into a double berth and a long settee to port offers additional seating. You can comfortably seat 6 people around the folding centerline cherry table for a meal down below. The plush cream settee seating is great for lounging while you sit back and listen to the fusion stereo located at the chart table on the port side of the salon. The smart lighting system control pad at the starboard settee allows for quick lighting options for the six overhead LED lights and two accent lights running forward along the cabin top. Cherry wood cabinets along the port and starboard sides offer ample amounts of storage spaces along with a storage space in the center of the table. A portable upholstered bench slides out from below the nav station to offer additional seating at the salon table. The nav station table faces aft and is at the end of the port settee. Two large overhead Lewmar hatches and four long side ports in the cabin top all open for nice ventilation and tons of natural light. Two additional fixed side ports provide even more light.

- U-shaped starboard settee with plush cream upholstery
- Long port settee and nav station seating
- Folding centerline table seats 6, folds over to double in size
- Climate control panel for Mermaid reverse-cycle air conditioning and heat
- Deep storage cabinets to port and starboard
- American cherry interior cabinetry
- (6) Overhead LED lights
- (2) Large overhead opening Lewmar hatches
- (4) Long opening side hatches in cabintop
- Port and starboard fixed hull ports for added natural light
- Bar cabinet in centerline table offers extra storage
- Huge amounts of extra storage behind and below port and starboard settees

- (2) Personal reading lights
- (2) Accent light strips leading forward on cabin top above grab rails
- Long shelves for added storage above port and starboard cabinetry
- Clarion stereo with speakers
- Battery storage and selector switches under port settee

NAVIGATION

The Hanse 445 features the aft facing chart table option forward of the head in the main salon on the port side. The American cherry wood chart table offers 2 feet of workspace and storage for navigating or for working at as your home office. A personal reading light and large opening side hatch offer light. The nav station is home to the electric panel which is conveniently located on an easy-access opening panel. The stereo unit, VHF radio and gas control panels are also at the nav station.

- SCS P4 Dragon DR7800 High Performance Radio Modem booster
- Simrad RS25 SSB radio
- iCOM HF Marine IC-M802 VHF
- Victron Energy battery monitor panel
- Victron Energy inverter control
- Paguro 4kW generator control panel (1,280 hours)
- 12V electric panel with 12V DC panel
- Clarion CZ102E stereo
- Ship's clock and barometer
- (4) Storage shelves
- Added storage space above cabinetry

GALLEY

STARLA features a spacious galley layout that provides a ton of space for preparing a gourmet meal. There's plenty of counter space, a double sink, dual access fridge space and storage. So many yachts are designed without enough counter space to have things resting on the counter while you cook. The Hanse 445 breaks that trend with plenty of counter space next to the sink, fridge and cooktop. The galley also features a double-bowl stainless steel sink and gimballed 2-burner propane stove and oven. There is also a ton of storage with deep cabinets, shelves and a designated foldout trash compartment. The refrigeration is top and side loading for more efficiency away from the dock.

- L-shaped gourmet galley
- Quartz themed laminate countertop
- Isotherm refrigeration, top and side loading
- Two-burner propane stove/oven
- Deep above-counter storage cabinets
- Storage shelves
- Deep pot/pan storage compartment below stove

- Pullout drawers below sink
- Ventilation via large opening side hatch in cabintop side and companionway hatch
- Overhead LED lighting
- Designated trash bin cabinet, folds out
- (1) Outlet
- Double stainless steel sink
- Built-in waste bin

OWNER'S STATEROOM FORWARD & TWIN MIRROR AFT GUEST CABINS

The forward cabin of the Hanse 445 features a large centerline berth, offering a comfortable queen to lay back and relax. Passage space on both sides of the berth make getting in and out of bed easy. The two overhead Lewmar hatches allow a wonderful breeze to pass through the cabin. The cabin also has a private en-suite head and shower, split into two rooms to help maintain flow through the yacht. The private head sits to port and a separate private shower sits to the starboard in the owner's cabin. Two side ports provide added natural light. Large storage lockers on each side of the cabin provide tons of storage. There is also recessing accent lighting over the berth for a relaxing soft glow. Reading lights on either side of the bed offer additional lighting.

- Centerline double berth with 4" foam
- Split head/shower on both port & starboard
- Opening ports for awesome ventilation
- Overhead LED lighting, direct and indirect
- Personal LED lighting
- Huge storage lockers

Matching aft guest cabins on both port and starboard have large sleeping berths, storage lockers, opening ports for ventilation, and LED direct and personal lighting

SHIP'S ELECTRICAL SYSTEM

- 12V and 230V electrical circuits
- Shore power 230V incl. differential breaker
- Paguro 4kW Diesel Genset (1280 hours)
- Battery charger 12V / 30 Amp
- Main battery switch
- 1 Engine battery: 12V / 80 Ah AGM
- 1 Service battery: 12V / 80 Ah AGM
- Electric main control panel 12V
- Onboard electrics
- Socket 12V
- Voltmeter
- Water / Fuel gauges

- Electric panel 230V
- Differential breaker
- Socket 230V
- Separate switch for warm water heater
- Navigation lights, all LED, including:
 - Steaming light
 - Bow light
 - Stern light
 - Anchor light

PROPULSION

Volvo D2-55 39 kW / 53 HP, fresh water cooled diesel engine w/814 hours Volvo Saildrive 3-blade folding propeller Fuel tank, approx. 220 l Fuel in-fill on deck Raw water sea strainer Fuel filter/water separator Volvo tachometer w/digital engine hour meter (814 hours) Engine room sound insulated

HANSE MFG HULL/DECK DETAILED CHECKLIST

White deck Isophthalic Gelcoat to resist chalking Vinylester resin top layer helps prevent osmotic blistering Balsa core sandwich deck construction w/cabin top teak upgrade Non-slip deck surface w/teak upgrade Self-draining chain locker (5) opening large flush hatches (4) acrylic opening glass windows (2) opening small flush hatches (2) opening small portholes (6) mooring cleats (pop-up/ (2) self-tailing halyard winches 48 AST (2) self-tailing genoa winches 46 AST Halyards lead aft to cockpit Control lines covered on the coachroof from mast base back to cockpit (2) winch handles Shower on aft deck (10) halyard & line stoppers Mid-boom sheeting with (2) stand-up blocks Split pulpit Pushpit with flag staff socket Sliding hatch garage Sliding hatch Hatch drop board lowers into hull Folding bathing platform with integrated folding seats Cockpit table Double stainless steel safety rail Handrails Teak on cockpit seats Swim ladder

RIG AND SAILS

- 9/10-rig, tapered masttop
- Two spreader anodised aluminium mast and boom
- Under deck furling system for jib
- Hanse single line reefing system (cockpit handling)
- Rod kicker
- Stainless steel standing rigging
- Backstay adjuster
- Main and jib halyard lead aft to cockpit
- Main and jib sheets
- North Sails Main Sail fully battened with 3 reefs
- Main Sail stack pack system - dacron lined
- North sails 106% self tacking jib - 3 vertical battens

- North Sails G2 Gennaker Norlon NO 150 with snuffer
- I : 57.5 ft J : 17.2 ft P : 54.3 ft E : 19.4 ft Working Sail Area : 1040.1 sq ft
- Flag halyards
- Boom break
- Upgraded ST48 winches, electric
- (2) Additional ST48 winches in mid position
- 3 mast steps
- Slide car system for main sail
- Rope tidy bags

DAVE AND ERIN'S RATING OF YACHT AND SYSTEMS

When we travel with clients FAR out of town for yachts, we don't like surprises when we get there. It's embarrassing for us and can make for an expensive trip. With that in mind, we'd like to share our rating of the various systems on the boat so you'll be as informed as possible before you come for a visit. Our rating system is on a 1-10 scale with 10 being 'excellent' (in OUR opinion). Please view this list as a GUIDE only. Everyone's idea of good and bad can vary quite a bit. Our goal in doing this is to help you reach a comfort level with the boat before you invest time and energy to come and see it. We'll summarize by saying that this IS a well preserved twelve year old yacht worthy of your serious consideration.

OVERALL RATING: 9.0/10

This is a proven off shore performance cruising boat, well cared for by her owner. Step below though and she's a posh cruising yacht everywhere you look. The joinery and upholstery are in good shape. The cockpit layout makes for super easy single-handing with the primaries within easy reach of the helm. Tucking the running rigging beneath the deck and running it back to both helms beautifully frees up cockpit space for your guests. All ship's systems appear to be in excellent working order. STARLA is rigged for weekend racing if you feel the need for speed. Her 7'-4" draft and tall rig puts her on rails for spectacular up wind speed and performance. Her plumb bow and slippery hull shape keeps her in the 7-9 knot speed range under most sailing conditions 12 knots of wind and higher. She's a 'go anywhere' yacht with a well-proven track record having sailed across from Europe. She's ready for her next adventure.

EXTERIOR RATING: 8.5/10

The hull and decks show well and are wide for easy passage. The cockpit is in great shape. All sunbrella canvas is in good shape. She has plenty of freeboard to keep you dry in the cockpit in spirited sea conditions. Having the chain plates brought out to the outer hull instead of dropped into the deck adds stiffness and superior performance in a blow, also freeing up easy movement fore and aft on deck. The cockpit is wide and and huge.

ELECTRONICS & GEAR RATING: 9.5/10

Everything on the boat seems to be in good working order. She's ready to go with great Simrad electronics, radar/plotter, autopilot & instruments, single side band radio, Pactor modem for

emails from anywhere on the planet, and everything you'll need for cruising, The autopilot makes for easy single-handing and is conveniently located right at the helm.

INTERIOR RATING: 9.0/10

This yacht has only seen light use so the interior shows extremely well. She's very classy looking with deep rich mahogany hues in the woodwork, plush upholstery and a cabin sole in superb shape. The opening and fixed ports throughout the boat bring in tons of air and natural light underway or at anchor. The galley is extremely spacious with a ton of countertop space and the three double berth cabins are equally appealing. The owner's suite forward is huge and accommodating. There is a ton of storage aboard with large hanging lockers, deep cabinetry, and exterior storage lockers.

ENGINE & PROPULSION RATING: 9.0/10

Engine access easy from beneath the companionway steps or from the aft cabin. Hoses look good. Hardly any corrosion on engine or mounts. Maintenance on the engine, transmission and drive unit is easy. She has plenty of power with her 55hp Volvo. Her bow thruster makes for easy docking when maneuvering space is tight.

SAILS & RIG RATING: 8.0/10

The running rigging is in good shape and the sloop rig, main and genoa are well cared for. Sails are serviced regularly at the loft. Her main has two super deep reef points controllable from the cockpit for big wind conditions. The large electric primaries make for easy sail handling and the running rigging all leads aft to the cockpit, directly to either helm station so your guests lounge while you run the yacht.

Исключения

При продаже яхты исключаются личные вещи владельца.

Отказ от ответственности

Компания предоставляет описание судна или яхты добросовестно, но не может гарантировать точность этой информации, а также не ручается за техническое состояние. Покупатель должен проинструктировать своих агентов или оценщиков исследовать представленную информацию более подробно, по собственному желанию. Продажа судна или яхты, изменение цены или снятие с продажи будет происходить без предварительного уведомления.

ФОТОГРАФИИ

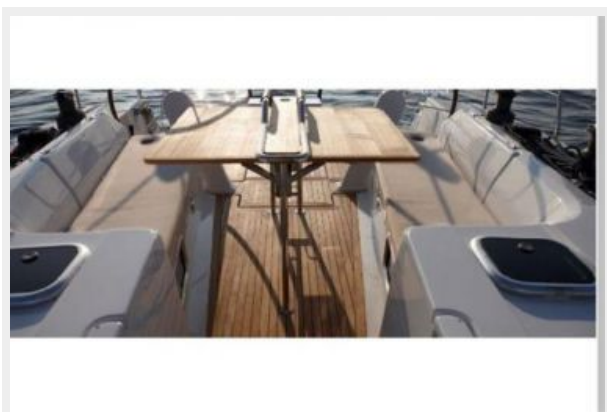
Manufacturer Provided Image



Manufacturer Provided Image



Manufacturer Provided Image



Manufacturer Provided Image



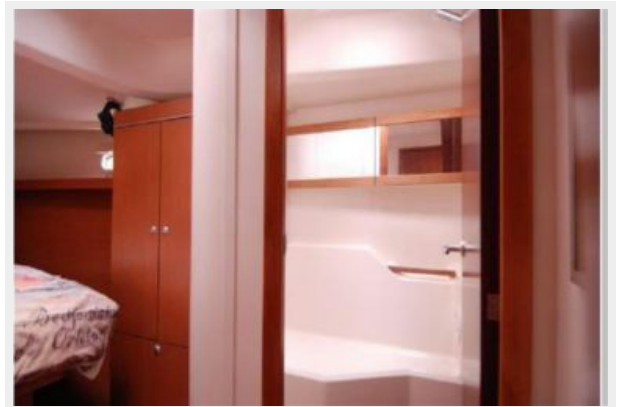


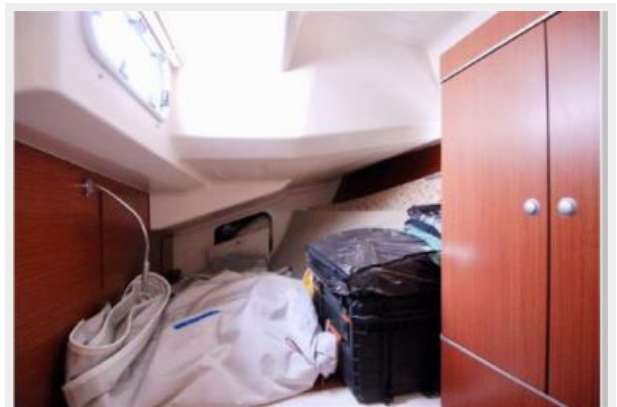


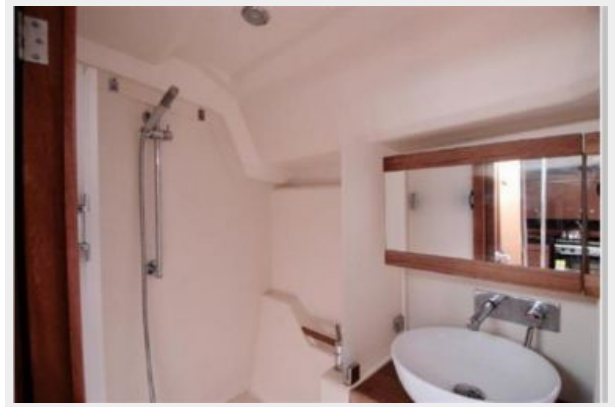












КОНТАКТЫ

Андрей Шестаков (Andrey Shestakov) – ведущий яхтенный брокер отдела продаж яхт и судов компании Shestakov Yacht Sales Inc. Официальный представитель Shestakov Yacht Sales Inc. для русскоговорящих клиентов в центральном офисе компании в Майами/Форт Лодердейл/Флорида/США.

Контактная информация

Email: andrey@shestakovyachtsales.com

Web: shestakovyachtsales.com

Телефоны

Краснодарский край: **+7(918)465-66-44**

США, Майами, Флорида: **+1(954)274-4435**

Время работы

Понедельник – Суббота: **9:00 - 21:00**
EDT

Воскресенье: **Закрето**

Адрес



Harbour Towne Marina, 850 NE 3rd St,
STE 213, Dania, FL 33004