

TEMPEST — TARTAN



Builder: TARTAN

Year Built: 2005

Model: Cruising Sailboat

Price: PRICE ON APPLICATION

Location: United States

LOA: 44' 0" (13.41m)

Beam: 14' 1" (4.29m)

Max Draft: 5' 6" (1.68m)

Our experienced yacht broker, Andrey Shestakov, will help you choose and buy a yacht that best suits your needs **TEMPEST — TARTAN** from our catalogue. Presently, at Shestakov Yacht Sales Inc., we have a wide variety of yachts available on our sale's list. We also work in close contact with all the big yacht manufacturers from all over the world.

If you would like to buy a yacht **TEMPEST — TARTAN** or would like help answering any questions concerning purchasing, selling or chartering a yacht, please call **+1(954)274-4435**

TABLE OF CONTENTS

TABLE OF CONTENTS	2
SPECIFICATIONS	5
Overview	5
Basic Information	5
Dimensions	5
Speed, Capacities and Weight	5
Accommodations	6
Hull and Deck Information	6
Engine Information	6
DETAILED INFORMATION	7
Features	7
Exclusions	10
Disclaimer	10
PHOTOS	12
NEW CANVAS / DAVITS	12
GREAT GALLEY	12
Tartan 4400 Sailplan	12
Tartan 4400 Layout	12
Tartan 4400 Cockpit	12
Wide Sidedecks	12
Windlass / Locker	13
Adjustable Tracks, Staysail track too!	13
Deck Locker	13
Wow - That's Great Storage!	13
Storm Sail Track	14
Tartan 4400 Housetop	14
Adjustable Genoa Tracks	14
Tartan 4400 NEW CANVAS	14

Tartan 4400 Cockpit	15
Helm - Right where YOU want to be!	15
Cockpit Locker	15
Power Primary Winches	15
B&G Electronics - 5 Readouts	15
Companionway	15
Companionway - Barn Doors	16
Salon	16
Custom Seat Back	16
Custom Seat Back - Removable	16
Custom Cabinetry	17
Aft Head	17
Custom Wet Locker	17
Nav Station	17
Battery Selectors Panel	18
Nav Gauges	18
Breaker Panel Aft	18
Entertainment / Liquor Lockers	18
Custom Serving Tray	19
Nav Station Drawers	19
Aft Cabin Double Bunk	19
Aft Cabin Lockers	19
Aft AC Control	20
Galley	20
Frig & Freezer Compartments	20
Force 10 Stove w/ Tray	20
Custom Garbage Drawer	21
Forward Head	21
Forward Head / Shower Stall	21

Forward Cabin	21
Cockpit Cushions	22
Port Side - TONS of lockers!	22
Aft Locker - Forward Cabin	22
Custom Dress Locker	22
Starboard Lockers - Froward Cabin	23
Custom Shelves / Hanging Locker	23
Custom Blinds - Open	23
Custom Blinds Closed	23
Companionway - Extinguisher Nook	24
Six Additional Coats on Sole	24
Windlass	24
Davits	24
Nav Station	24
Nav / Wet bar	24
NEW 12" Simrad Radar / Plotter	25
NEW TV - 2017	25
Cockpit Table	25
NEW STEREO / DVD 2017	25
NEW 9" Plotter / Radar at Helm	25
4g Digital Radar 2017	25
Storm Sail Furler / Halyard	26
CONTACTS	27
Contact details	27
Telephones	27
Office hours	27
Address	27

SPECIFICATIONS

Overview

**** \$20,000 Price Reduction November 20, 2018 -- MAKE AN OFFER NOW!

TEMPEST is a beautifully kept and well prepared Tartan 4400. Professionally maintained, updated and equipped by an experienced owner.

She has Genset, Thruster, Radar, Plotters, Autopilot, two heads, and loads of options. Over 750k to replace today. New Sails, New Radar / Plotters, New Autopilot, New Davits, New Canvas and MORE in the last 2 years. This boat is updated and ready for adventure NOW -- No expense spared, ready to go cruising.

ALL Serious offers consider. Seller has new boat on order...This is the one you have been waiting for! CALL TODAY!

Basic Information

Category: Cruising Sailboat

Sub Category: Deck Saloon

Model Year: 2005

Year Built: 2005

Country: United States

Dimensions

LOA: 44' 0" (13.41m)

LWL: 37' 6" (11.43m)

LOD: 44' 0" (13.41m)

Beam: 14' 1" (4.29m)

Max Draft: 5' 6" (1.68m)

Speed, Capacities and Weight

Displacement: 24000 Pounds

Water Capacity: 200 Gallons

Holding Tank: 48 Gallons

Fuel Capacity: 80 Gallons

Accommodations

Total Cabins: 2

Total Berths: 3

Total Heads: 2

Hull and Deck Information

Hull Material: Fiberglass

Hull Configuration: Bulb Keel

Hull Color: Red Mahogany

Hull Designer: Tim Jackett

Engine Information

Engines: 1

Manufacturer: Yanmar

Model: 4JH3-TE

Engine Type: Inboard

Fuel Type: Diesel

DETAILED INFORMATION

Features

Accommodations

The Tartan 4400 has a modern deck salon layout with two spacious queen bunks, tons of storage and a two full heads.

The forward cabin has a queen sized "Island Bunk" with custom configured lockers and storage spaces. Last Dance was custom built with a "dress" locker / Bureau - having his and hers thought to storing gear.

The forward head can be accessed from the salon or forward cabin and has an enclosed shower stall. Both heads feature vacu-flush heads.

The aft cabin has wonderful guest queen bunk with ample storage both hanging and shelves. Including standalone AC unit in cabin controls for comfort.

The salon area has a large curved couch / settee with an oval dining table. Custom additional seat and back were built on Last Dance. She also has a raising and lowering Dining Table. On the starboard side is the spacious work area and storage in the desk and drawers adjacent. Chart-plotter / Radar, VHF and Electronic controls are here with the house breaker panels below the nav seat and behind. An expansive entertainment / Liquor locker area is in front of nav station and has a custom for Tartan serving tray.

Fisher Panda 8 KW Genset provides power when away from the slip and the three Reverse-Cycle AC units keep the cabin climate manageable year around!

On deck the Tartan 4400 has a long cockpit with a drop down transom for walk-through access to the water. The cockpit has seating for many and a cockpit table for lounging at the dock. The cockpit sail locker is roomy and has full access to the steering / rudder systems. Power winches assist with sail management, making her a dream to sail in all conditions. The Yanmar Engine and help bow Thruster keep her tamed when approaching a tight corner or leeward rule dock.

On the bow, there is a deck storage locker, with access to the chain locker and windlass motor. This can accommodate, full sized items like Roll up dink, cruising chute, fenders and the like. You won't find a better bow locker in this size / class.

The Tartan 4400 has won many awards including Cruising World's Boat of the Year! You will enjoy her modern design with the classic quality construction you expect in a Tartan!

Owners have maintained her to the highest standards and have many thoughtful improvements along the way as well!

Electrical

- Two 8D House Bank Batteries - 400+ AH
- Group 31 Engine Start Battery
- Bow Thruster & Genset Battery Banks
- Heart Freedom 20 Inverter Charger
- Link 2000 Control Panel for Inverter / Charger
- AC / DC / Tank Monitors
- 80 amp Alternator
- Fisher Panda 8KW Genset - 250 Hours
- Lewmar Bow Thruster
- Three Zone Air Conditioning - 36k BTU total
- Blue Seas Shorepower Distribution Panel
- Blue Seas 12VDC Distribution Panel
- Blue Seas 110VAC Distribution Panel W/ Genset Crossover
- Technautics Refrigeration / Freezer Compressors
- Hot & Cold Pressure Water - Hot Water by Engine or 110VAC Heater
- 12VDC Outlets at the Nav Station & Helm

Plumbing

- Hot & Cold Pressure Water
- Vacu Flush Head in Forward & Aft Head
- Fully Enclosed Shower in Forward / Master Head
- 200 gallons Freshwater in Bow / Main Water Tanks
- Automatic Bilge Pumps for Bilge & Deck Locker
- Automatic Sump Pump for Showers / Head Sinks / Iceboxes
- Manual Bilge Pump in Cockpit
- Collection Box for Sea-Water Distribution to Systems-Minimizes Through Hulls
- Additional Dedicated Engine thru-hull for Strainer
- Cockpit Shower
- Whale Pumping Fittings throughout for easy serviceability
- Deck Wash-down for Windlass

Electronics

- SIMRAD 9" Plotter / Radar at Helm - 2017
- SIMRAD 12" Plotter / Radar at Nav Station - 2017
- ICOM VHF Radion at Nav Station
- VHF RAM mic @ Helm
- 4KW 4G Digital Radar On Custom Mast Mount
- Pivoting Mast Mount radar w/ Helm Control
- LEWMAR Bow Thruster
- LEWMAR Windlass w/ Deck & helm Controls
- B&G Displays on Companionway Pods
- * 3 Multi-Function Displays

- * Analog AWI & Close Haul Displays
- B&G Below decks Autopilot @ Helm - 2017
- B&G Multi-Function @ Helm

Deck & Rigging

- Novis Carbon Fiber Spar
- Charleston Spars Aluminum Boom
- Dutchman Flaking System for Mainsail
- Low Friction Luff Slide System for Mainsail - Antal
- Forespar Rod Vang w/ tackle led aft
- Harken Inboard Adjustable Genoa Cars
- Custom Configured Strom Jib / Cutter Rig
- Code Zero Style Furler for Storm Jib / Cutter Rig
- Custom Synthetic (instead of wire) Running Backstays for Storm Jib
- Teak Cockpit Sole
- Teak Cockpit Coamings
- Cockpit Table - Teak
- Drink Holder on Pedestal - Teak
- All exterior teak stripped and Cetol Sikkens 2014
- ALL LEWMAR Winches on Deck
- Husetop Electric Winch - Controls Lines
- Electric Primaries at Helm
- Manual Secondaries (used rarely)
- SS Plow Anchor
- LEWMAR Rack & Pinion Steering
- LEWMAR Leather Wrapped Mini- Maxi Wheel

Sails & Canvas

- Elvstrom Full Batten Mainsail - Cruising Laminate - 2018
- Luff Slides & Dutchman for ease of handling
- Elvstrom 135% Genoa - Cruising Laminate - 2018
- UK - Storm Jib Configured w/ Furler as Cutter
- UK Cruising Spinnaker w/ Sock
- Custom Canvas - ALL Toast Color - ALL NEW 2016
- Dodger - 2016
- Bimini - 2016
- Connector - 2016
- Mainsail Cover - 2016
- Cockpit Cushions

Additional Information

- Red Mahogany Awlgrip Hull
- White Deck w/ Contrasting / Sand Color Deck
- White Boot & Gold Cove Stripes
- Epoxy Hull & Carbon Fiber Rig
- Toast Canvas - NEW 2016
- F/P Genset
- 3 Air Con Units
- Bow Thruster
- Power Winches
- Full Electronics Package - 2017
- Main and Genoa NEW 2018
- Davits - NEW 2017
- LOTS of Custom Details - owners third Tartan
- Custom Trash Can Slider
- Additional 5 coats of varnish on Sole
- Custom Cabinetry
- Larger TV
- Re-configured Vented Loops
- Three Blade Max Prop
- Frig & Freezer Option
- Custom Wet / Hanging locker in Head

TEMPEST is a superbly cared for TWO OWNER Tartan 4400. Built to the highest standard for a VERY knowledgeable owner. numerous updated / improvements and professionally maintained. Originally on Lake Erie (freshwater) and on the bay since 2017...

Stored indoors each winter until 2016 and used lightly. Amazing Updates with canvas, electronics, davits and sails in the last 2 years... She is ready to adventure wherever the wind takes you.

Call today or a showing, you won't be disappointed. New boat on order -- Offers Encouraged!

Exclusions

Owner's personal belongings.

Disclaimer

The Company offers the details of this vessel or yacht in good faith but cannot guarantee or warrant the accuracy of this information nor warrant the condition of the vessel. A buyer should instruct his representatives, agents, or his surveyors, to investigate such details as the buyer desires validated. This vessel or yacht is offered subject to prior sale, price change, or withdrawal

without notice.

PHOTOS

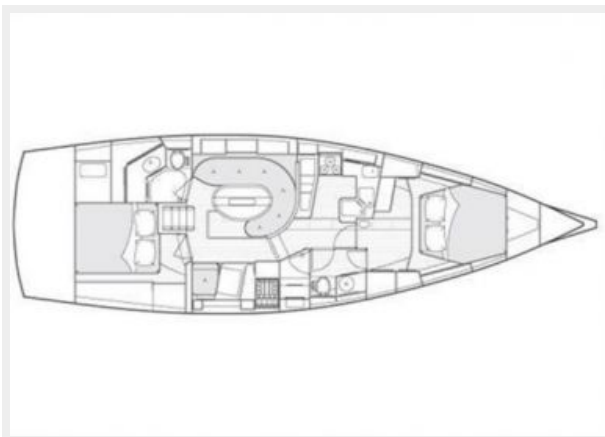
NEW CANVAS / DAVITS



GREAT GALLEY



Tartan 4400 Layout



Tartan 4400 Sailplan



Tartan 4400 Cockpit



Wide Side decks



Adjustable Tracks, Staysail track too!



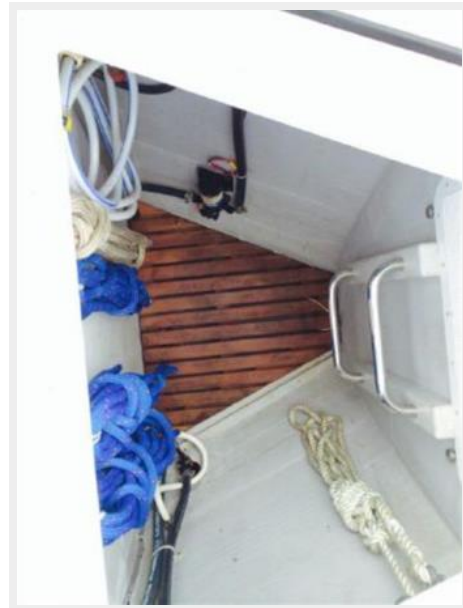
Windlass / Locker



Deck Locker



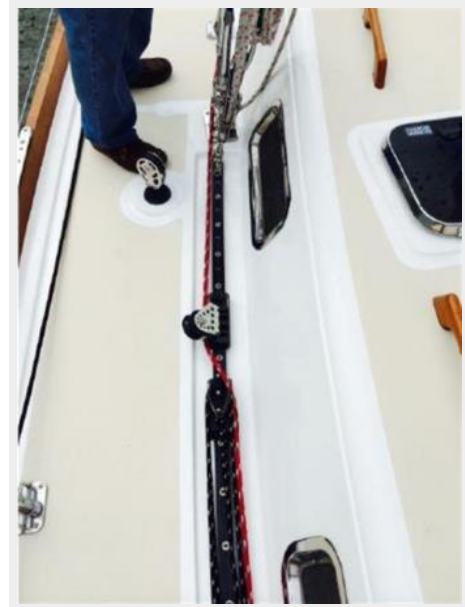
Wow - That's Great Storage!



Tartan 4400 Housetop



Storm Sail Track



Adjustable Genoa Tracks



Tartan 4400 NEW CANVAS



Tartan 4400 Cockpit



Helm - Right where YOU want to be!



Cockpit Locker



Power Primary Winches



B&G Electronics - 5 Readouts



Companionway



Companionway - Barn Doors



Salon



Custom Seat Back



Custom Seat Back - Removable



Aft Head



Custom Cabinetry



Custom Wet Locker



Nav Station



Battery Selectors Panel



Nav Gauges



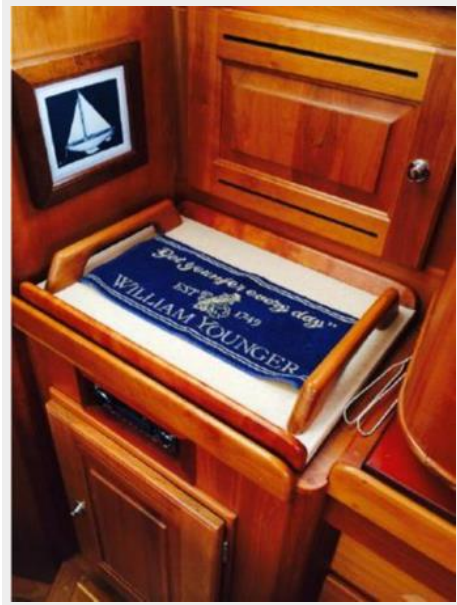
Breaker Panel Aft



Entertainment / Liquor Lockers



Custom Serving Tray



Nav Station Drawers



Aft Cabin Double Bunk



Aft Cabin Lockers



Aft AC Control



Galley



Frig & Freezer Compartments



Force 10 Stove w/ Tray



Custom Garbage Drawer



Forward Head



Forward Head / Shower Stall



Forward Cabin



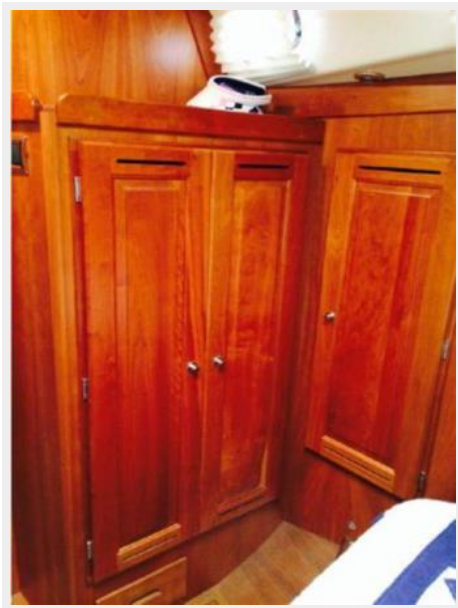
Port Side - TONS of lockers!



Cockpit Cushions



Aft Locker - Forward Cabin



Custom Dress Locker



Starboard Lockers - Froward Cabin



Custom Shelves / Hanging Locker



Custom Blinds - Open



Custom Blinds Closed



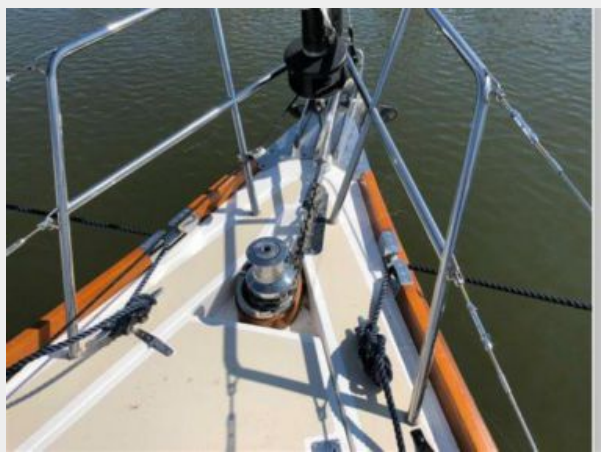
Companionway - Extinguisher Nook



Six Additional Coats on Sole



Windlass



Davits



Nav Station



Nav / Wet bar



NEW 12" Simrad Radar / Plotter



NEW TV - 2017



NEW STEREO / DVD 2017



Cockpit Table



NEW 9" Plotter / Radar at Helm



4g Digital Radar 2017



Storm Sail Furler / Halyard



CONTACTS

Andrey Shestakov, leading yacht broker of the sales department of Shestakov Yacht Sales Inc. Shestakov Yacht Sales Inc., the official representative of the Miami/Fort Lauderdale FL headquarters.

Contact details

Email: andrey@shestakovyachtsales.com

Web: shestakovyachtsales.com/en/

Telephones

USA: +1(954)274-4435

Office hours

Monday – Saturday: **9:00 - 21:00** EDT

Sunday: **closed**

Address



Harbour Towne Marina, 850 NE 3rd St,
STE 213, Dania, FL 33004