

TEMPEST — TARTAN



Судостроитель: TARTAN

Год постройки: 2005

Модель: Крейсерская яхта

Цена: **ЦЕНА ЯХТЫ ПО ЗАПРОСУ**

Местонахождение: United States

Длина общая: 44' 0" (13.41m)

Ширина: 14' 1" (4.29m)

Макс. осадка: 5' 6" (1.68m)

Купить **TEMPEST — TARTAN** а также выбрать подходящую вам яхту из нашего каталога яхт вам поможет опытный яхтенный брокер Андрей Шестаков. На сегодняшний день компания **Shestakov Yacht Sales Inc.** имеет большое количество яхт в собственном списке продаж, а также тесно сотрудничает со всеми крупными яхтенными производителями по всему миру.

Для того чтобы купить яхту **TEMPEST — TARTAN** а также проконсультироваться по любому вопросу связанному с покупкой, продажей, чартером яхт позвоните по телефону **+7(918)465-66-44**.

ОГЛАВЛЕНИЕ

| | |
|--|----|
| ОГЛАВЛЕНИЕ | 2 |
| ХАРАКТЕРИСТИКИ | 5 |
| Обзор | 5 |
| Основная информация | 5 |
| Размеры | 5 |
| Скорость, вместимость и масса | 5 |
| Размещение | 6 |
| Корпус и палуба | 6 |
| Информация о двигателе | 6 |
| ПОДРОБНОЕ ОПИСАНИЕ | 7 |
| Features | 7 |
| Исключения | 10 |
| Отказ от ответственности | 10 |
| ФОТОГРАФИИ | 12 |
| NEW CANVAS / DAVITS | 12 |
| GREAT GALLEY | 12 |
| Tartan 4400 Sailplan | 12 |
| Tartan 4400 Layout | 12 |
| Tartan 4400 Cockpit | 12 |
| Wide Sidedecks | 12 |
| Windlass / Locker | 13 |
| Adjustable Tracks, Staysail track too! | 13 |
| Deck Locker | 13 |
| Wow - That's Great Storage! | 13 |
| Storm Sail Track | 14 |
| Tartan 4400 Housetop | 14 |
| Adjustable Genoa Tracks | 14 |
| Tartan 4400 NEW CANVAS | 14 |

| | |
|------------------------------------|----|
| Tartan 4400 Cockpit | 15 |
| Helm - Right where YOU want to be! | 15 |
| Cockpit Locker | 15 |
| Power Primary Winches | 15 |
| B&G Electronics - 5 Readouts | 15 |
| Companionway | 15 |
| Companionway - Barn Doors | 16 |
| Salon | 16 |
| Custom Seat Back | 16 |
| Custom Seat Back - Removable | 16 |
| Custom Cabinetry | 17 |
| Aft Head | 17 |
| Custom Wet Locker | 17 |
| Nav Station | 17 |
| Battery Selectors Panel | 18 |
| Nav Gauges | 18 |
| Breaker Panel Aft | 18 |
| Entertainment / Liquor Lockers | 18 |
| Custom Serving Tray | 19 |
| Nav Station Drawers | 19 |
| Aft Cabin Double Bunk | 19 |
| Aft Cabin Lockers | 19 |
| Aft AC Control | 20 |
| Galley | 20 |
| Frig & Freezer Compartments | 20 |
| Force 10 Stove w/ Tray | 20 |
| Custom Garbage Drawer | 21 |
| Forward Head | 21 |
| Forward Head / Shower Stall | 21 |

| | |
|-----------------------------------|-----------|
| Forward Cabin | 21 |
| Cockpit Cushions | 22 |
| Port Side - TONS of lockers! | 22 |
| Aft Locker - Forward Cabin | 22 |
| Custom Dress Locker | 22 |
| Starboard Lockers - Froward Cabin | 23 |
| Custom Shelves / Hanging Locker | 23 |
| Custom Blinds - Open | 23 |
| Custom Blinds Closed | 23 |
| Companionway - Extinguisher Nook | 24 |
| Six Additional Coats on Sole | 24 |
| Windlass | 24 |
| Davits | 24 |
| Nav Station | 24 |
| Nav / Wet bar | 24 |
| NEW 12" Simrad Radar / Plotter | 25 |
| NEW TV - 2017 | 25 |
| Cockpit Table | 25 |
| NEW STEREO / DVD 2017 | 25 |
| NEW 9" Plotter / Radar at Helm | 25 |
| 4g Digital Radar 2017 | 25 |
| Storm Sail Furler / Halyard | 26 |
| КОНТАКТЫ | 27 |
| Контактная информация | 27 |
| Телефоны | 27 |
| Время работы | 27 |
| Адрес | 27 |

ХАРАКТЕРИСТИКИ

Обзор

**** \$20,000 Price Reduction November 20, 2018 -- MAKE AN OFFER NOW!

TEMPEST is a beautifully kept and well prepared Tartan 4400. Professionally maintained, updated and equipped by an experienced owner.

She has Genset, Thruster, Radar, Plotters, Autopilot, two heads, and loads of options. Over 750k to replace today. New Sails, New Radar / Plotters, New Autopilot, New Davits, New Canvas and MORE in the last 2 years. This boat is updated and ready for adventure NOW -- No expense spared, ready to go cruising.

ALL Serious offers consider. Seller has new boat on order...This is the one you have been waiting for! CALL TODAY!

Основная информация

Тип судна: Крейсерская яхта

Подкатегория: Палубный парусник

Модельный год: 2005

Год постройки: 2005

Страна: United States

Размеры

Длина общая: 44' 0" (13.41m)

Длина по ватерлинии: 37' 6" (11.43m)

Длина палубы: 44' 0" (13.41m)

Ширина: 14' 1" (4.29m)

Макс. осадка: 5' 6" (1.68m)

Скорость, вместимость и масса

Водоизмещение: 24000 Pounds

Вместимость воды: 200 Gallons

Вместимость сточного бака: 48 Gallons **Объем топливного бака:** 80 Gallons

Размещение

Всего кают: 2

Всего коек: 3

Всего ком. состава: 2

Корпус и палуба

Материал корпуса: Fiberglass

Комплектация корпуса: Bulb Keel

Цвет корпуса: Red Mahogany

Дизайнер корпуса: Tim Jackett

Информация о двигателе

Двигатели: 1

Производитель: Yanmar

Модель: 4JH3-TE

Тип двигателя: Inboard

Тип топлива: Diesel

ПОДРОБНОЕ ОПИСАНИЕ

Features

Accommodations

The Tartan 4400 has a modern deck salon layout with two spacious queen bunks, tons of storage and a two full heads.

The forward cabin has a queen sized "Island Bunk" with custom configured lockers and storage spaces. Last Dance was custom built with a "dress" locker / Bureau - having his and hers thought to storing gear.

The forward head can be accessed from the salon or forward cabin and has an enclosed shower stall. Both heads feature vacu-flush heads.

The aft cabin has wonderful guest queen bunk with ample storage both hanging and shelves. Including standalone AC unit in cabin controls for comfort.

The salon area has a large curved couch / settee with an oval dining table. Custom additional seat and back were built on Last Dance. She also has a raising and lowering Dining Table. On the starboard side is the spacious work area and storage in the desk and drawers adjacent. Chart-plotter / Radar, VHF and Electronic controls are here with the house breaker panels below the nav seat and behind. An expansive entertainment / Liquor locker area is in front of nav station and has a custom for Tartan serving tray.

Fisher Panda 8 KW Genset provides power when away from the slip and the three Reverse-Cycle AC units keep the cabin climate manageable year around!

On deck the Tartan 4400 has a long cockpit with a drop down transom for walk-through access to the water. The cockpit has seating for many and a cockpit table for lounging at the dock. The cockpit sail locker is roomy and has full access to the steering / rudder systems. Power winches assist with sail management, making her a dream to sail in all conditions. The Yanmar Engine and help bow Thruster keep her tamed when approaching a tight corner or leeward rule dock.

On the bow, there is a deck storage locker, with access to the chain locker and windlass motor. This can accommodate, full sized items like Roll up dink, cruising chute, fenders and the like. You won't find a better bow locker in this size / class.

The Tartan 4400 has won many awards including Cruising World's Boat of the Year! You will enjoy her modern design with the classic quality construction you expect in a Tartan!

Owners have maintained her to the highest standards and have many thoughtful improvements along the way as well!

Electrical

- Two 8D House Bank Batteries - 400+ AH
- Group 31 Engine Start Battery
- Bow Thruster & Genset Battery Banks
- Heart Freedom 20 Inverter Charger
- Link 2000 Control Panel for Inverter / Charger
- AC / DC / Tank Monitors
- 80 amp Alternator
- Fisher Panda 8KW Genset - 250 Hours
- Lewmar Bow Thruster
- Three Zone Air Conditioning - 36k BTU total
- Blue Seas Shorepower Distribution Panel
- Blue Seas 12VDC Distribution Panel
- Blue Seas 110VAC Distribution Panel W/ Genset Crossover
- Technautics Refrigeration / Freezer Compressors
- Hot & Cold Pressure Water - Hot Water by Engine or 110VAC Heater
- 12VDC Outlets at the Nav Station & Helm

Plumbing

- Hot & Cold Pressure Water
- Vacu Flush Head in Forward & Aft Head
- Fully Enclosed Shower in Forward / Master Head
- 200 gallons Freshwater in Bow / Main Water Tanks
- Automatic Bilge Pumps for Bilge & Deck Locker
- Automatic Sump Pump for Showers / Head Sinks / Iceboxes
- Manual Bilge Pump in Cockpit
- Collection Box for Sea-Water Distribution to Systems-Minimizes Through Hulls
- Additional Dedicated Engine thru-hull for Strainer
- Cockpit Shower
- Whale Pumping Fittings throughout for easy serviceability
- Deck Wash-down for Windlass

Electronics

- SIMRAD 9" Plotter / Radar at Helm - 2017
- SIMRAD 12" Plotter / Radar at Nav Station - 2017
- ICOM VHF Radion at Nav Station
- VHF RAM mic @ Helm
- 4KW 4G Digital Radar On Custom Mast Mount
- Pivoting Mast Mount radar w/ Helm Control
- LEWMAR Bow Thruster
- LEWMAR Windlass w/ Deck & helm Controls
- B&G Displays on Companionway Pods
- * 3 Multi-Function Displays

- * Analog AWI & Close Haul Displays
- B&G Below decks Autopilot @ Helm - 2017
- B&G Multi-Function @ Helm

Deck & Rigging

- Novis Carbon Fiber Spar
- Charleston Spars Aluminum Boom
- Dutchman Flaking System for Mainsail
- Low Friction Luff Slide System for Mainsail - Antal
- Forespar Rod Vang w/ tackle led aft
- Harken Inboard Adjustable Genoa Cars
- Custom Configured Strom Jib / Cutter Rig
- Code Zero Style Furler for Storm Jib / Cutter Rig
- Custom Synthetic (instead of wire) Running Backstays for Storm Jib
- Teak Cockpit Sole
- Teak Cockpit Coamings
- Cockpit Table - Teak
- Drink Holder on Pedestal - Teak
- All exterior teak stripped and Cetol Sikkens 2014
- ALL LEWMAR Winches on Deck
- Husetop Electric Winch - Controls Lines
- Electric Primaries at Helm
- Manual Secondaries (used rarely)
- SS Plow Anchor
- LEWMAR Rack & Pinion Steering
- LEWMAR Leather Wrapped Mini- Maxi Wheel

Sails & Canvas

- Elvstrom Full Batten Mainsail - Cruising Laminate - 2018
- Luff Slides & Dutchman for ease of handling
- Elvstrom 135% Genoa - Cruising Laminate - 2018
- UK - Storm Jib Configured w/ Furler as Cutter
- UK Cruising Spinnaker w/ Sock
- Custom Canvas - ALL Toast Color - ALL NEW 2016
- Dodger - 2016
- Bimini - 2016
- Connector - 2016
- Mainsail Cover - 2016
- Cockpit Cushions

Additional Information

- Red Mahogany Awlgrip Hull
- White Deck w/ Contrasting / Sand Color Deck
- White Boot & Gold Cove Stripes
- Epoxy Hull & Carbon Fiber Rig
- Toast Canvas - NEW 2016
- F/P Genset
- 3 Air Con Units
- Bow Thruster
- Power Winches
- Full Electronics Package - 2017
- Main and Genoa NEW 2018
- Davits - NEW 2017
- LOTS of Custom Details - owners third Tartan
- Custom Trash Can Slider
- Additional 5 coats of varnish on Sole
- Custom Cabinetry
- Larger TV
- Re-configured Vented Loops
- Three Blade Max Prop
- Frig & Freezer Option
- Custom Wet / Hanging locker in Head

TEMPEST is a superbly cared for TWO OWNER Tartan 4400. Built to the highest standard for a VERY knowledgeable owner. numerous updated / improvements and professionally maintained. Originally on Lake Erie (freshwater) and on the bay since 2017...

Stored indoors each winter until 2016 and used lightly. Amazing Updates with canvas, electronics, davits and sails in the last 2 years... She is ready to adventure wherever the wind takes you.

Call today or a showing, you won't be disappointed. New boat on order -- Offers Encouraged!

Исключения

При продаже яхты исключаются личные вещи владельца.

Отказ от ответственности

Компания предоставляет описание судна или яхты добросовестно, но не может гарантировать точность этой информации, а также не ручается за техническое состояние. Покупатель должен проинструктировать своих агентов или оценщиков исследовать представленную информацию более подробно, по собственному желанию.

Продажа судна или яхты, изменение цены или снятие с продажи будет происходить без предварительного уведомления.

ФОТОГРАФИИ

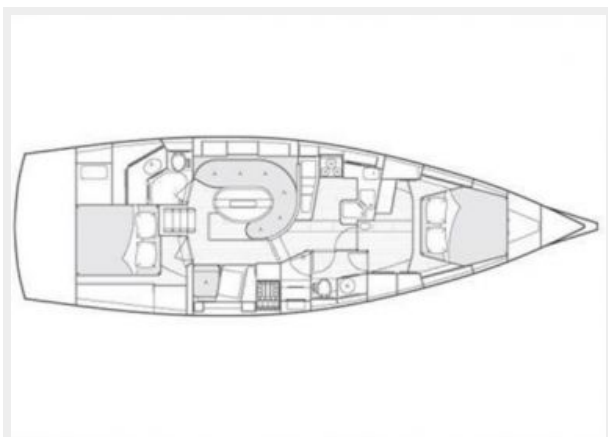
NEW CANVAS / DAVITS



GREAT GALLEY



Tartan 4400 Layout



Tartan 4400 Sailplan



Tartan 4400 Cockpit



Wide Sidedecks



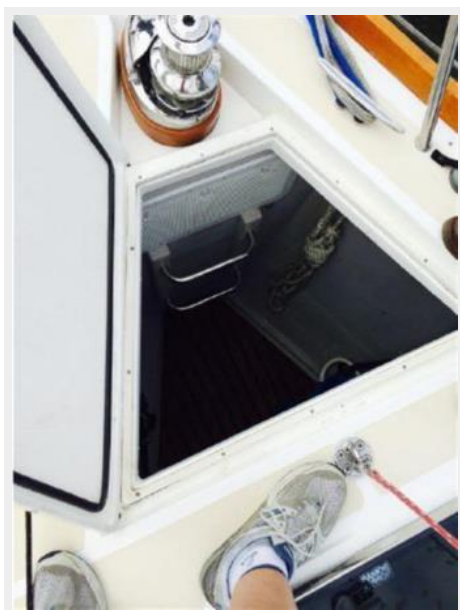
Adjustable Tracks, Staysail track too!



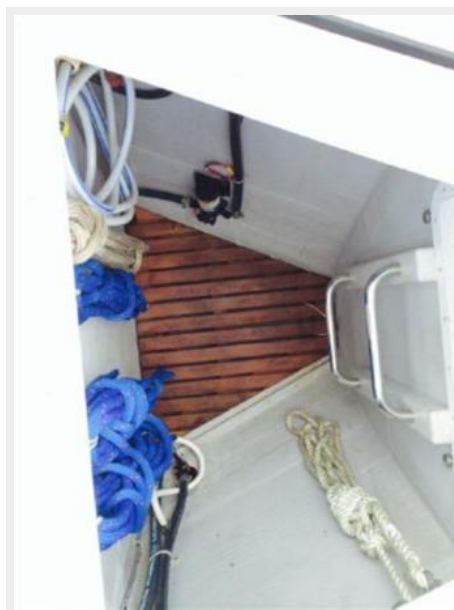
Windlass / Locker



Deck Locker



Wow - That's Great Storage!



Tartan 4400 Housetop



Storm Sail Track



Adjustable Genoa Tracks



Tartan 4400 NEW CANVAS



Tartan 4400 Cockpit



Helm - Right where YOU want to be!



Cockpit Locker



Power Primary Winches



B&G Electronics - 5 Readouts



Companionway



Companionway - Barn Doors



Salon



Custom Seat Back



Custom Seat Back - Removable



Aft Head



Custom Cabinetry



Custom Wet Locker



Nav Station



Battery Selectors Panel



Nav Gauges



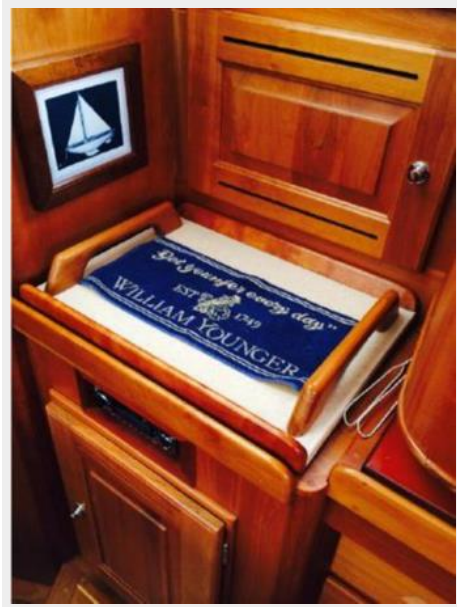
Breaker Panel Aft



Entertainment / Liquor Lockers



Custom Serving Tray



Nav Station Drawers



Aft Cabin Double Bunk



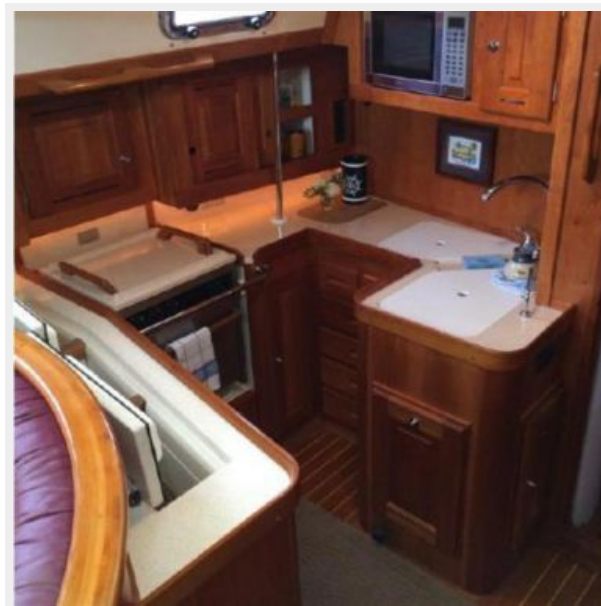
Aft Cabin Lockers



Aft AC Control



Galley



Frig & Freezer Compartments



Force 10 Stove w/ Tray



Custom Garbage Drawer



Forward Head



Forward Head / Shower Stall



Forward Cabin



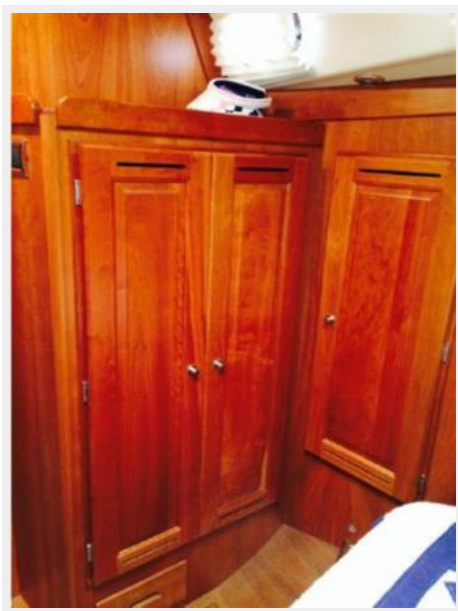
Port Side - TONS of lockers!



Cockpit Cushions



Aft Locker - Forward Cabin



Custom Dress Locker



Starboard Lockers - Froward Cabin



Custom Shelves / Hanging Locker



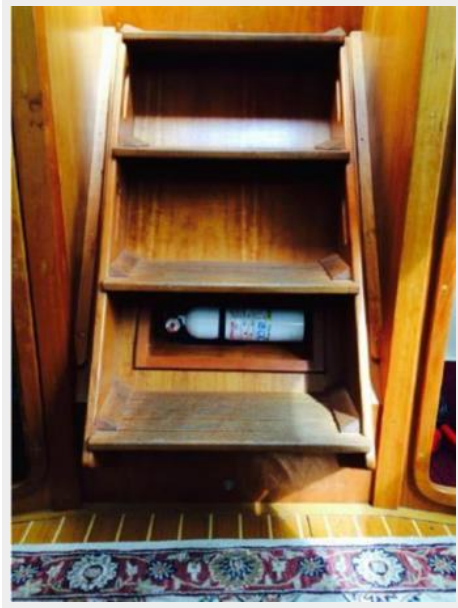
Custom Blinds - Open



Custom Blinds Closed



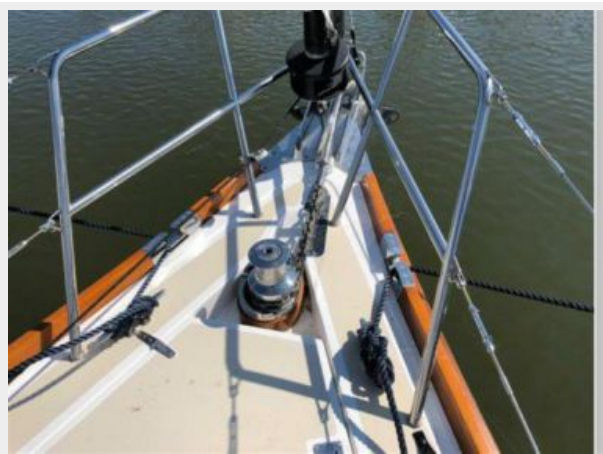
Companionway - Extinguisher Nook



Six Additional Coats on Sole



Windlass



Davits



Nav Station



Nav / Wet bar



NEW 12" Simrad Radar / Plotter



NEW TV - 2017



NEW STEREO / DVD 2017



Cockpit Table



NEW 9" Plotter / Radar at Helm



4g Digital Radar 2017



Storm Sail Furler / Halyard



КОНТАКТЫ

Андрей Шестаков (Andrey Shestakov) – ведущий яхтенный брокер отдела продаж яхт и судов компании Shestakov Yacht Sales Inc. Официальный представитель Shestakov Yacht Sales Inc. для русскоговорящих клиентов в центральном офисе компании в Майами/Форт Лодердейл/Флорида/США.

Контактная информация

Email: andrey@shestakovyachtsales.com

Web: shestakovyachtsales.com

Телефоны

Краснодарский край: **+7(918)465-66-44**

США, Майами, Флорида: **+1(954)274-4435**

Время работы

Понедельник – Суббота: **9:00 - 21:00**
EDT

Воскресенье: **Закрыто**

Адрес



Harbour Towne Marina, 850 NE 3rd St,
STE 213, Dania, FL 33004