

WATER MUSIC — BENETEAU



Судостроитель: BENETEAU

Год постройки: 2003

Модель: Крейсерская яхта

Цена: ЦЕНА ЯХТЫ ПО ЗАПРОСУ

Местонахождение: United States

Длина общая: 42' 0" (12.80m)

Ширина: 12' 11" (3.94m)

Макс. осадка: 4' 9" (1.45m)

Купить **Water Music — BENETEAU** а также выбрать подходящую вам яхту из нашего каталога яхт вам поможет опытный яхтенный брокер Андрей Шестаков. На сегодняшний день компания **Shestakov Yacht Sales Inc.** имеет большое количество яхт в собственном списке продаж, а также тесно сотрудничает со всеми крупными яхтенными производителями по всему миру.

Для того чтобы купить яхту **Water Music — BENETEAU** а также проконсультироваться по любому вопросу связанному с покупкой, продажей, чартером яхт позвоните по телефону **+7(918)465-66-44**.

ОГЛАВЛЕНИЕ

| | |
|-------------------------------|----|
| ОГЛАВЛЕНИЕ | 2 |
| ХАРАКТЕРИСТИКИ | 3 |
| Обзор | 3 |
| Основная информация | 3 |
| Размеры | 3 |
| Скорость, вместимость и масса | 4 |
| Размещение | 4 |
| Корпус и палуба | 4 |
| Информация о двигателе | 4 |
| ПОДРОБНОЕ ОПИСАНИЕ | 5 |
| Features | 5 |
| Исключения | 11 |
| Отказ от ответственности | 11 |
| ФОТОГРАФИИ | 12 |
| КОНТАКТЫ | 21 |
| Контактная информация | 21 |
| Телефоны | 21 |
| Время работы | 21 |
| Адрес | 21 |

ХАРАКТЕРИСТИКИ

Обзор

Designed by Groupe Finot, WATER MUSIC is a well-equipped 2-cabin 423. She is the perfect size for bay and coastal cruising with all the amenities you will need for weekend or extended voyages with great cruising features that include a Fischer Panda genset, reverse-cycle air conditioning, satellite television, and in-mast furling.

HIGHLIGHTS:

- 2-cabin, 2-head owner's version
- Yanmar direct drive diesel with 2,579 hours
- Fischer Panda generator serviced 2018
- Reverse-cycle air conditioning and heat
- In-mast furling
- Custom Kato arch with dinghy davits
- Garmin 2016 chart plotter
- Radar
- Full cockpit canvas enclosure

Основная информация

Тип судна: Крейсерская яхта

Модельный год: 2003

Год постройки: 2003

Страна: United States

Размеры

Длина общая: 42' 0" (12.80m)

Длина по ватерлинии: 38' 7" (11.76m)

Ширина: 12' 11" (3.94m)

Макс. осадка: 4' 9" (1.45m)

Скорость, вместимость и масса

Водоизмещение: 19500 Pounds

Вместимость воды: 154 Gallons

Вместимость сточного бака: 44 Gallons

Объем топливного бака: 53 Gallons

Размещение

Всего кают: 2

Всего коек: 2

Всего ком. состава: 2

Корпус и палуба

Материал корпуса: Fiberglass

Комплектация корпуса: Bulb Keel

Информация о двигателе

Двигатели: 1

Производитель: Yanmar

Модель: 4JH3E

Тип двигателя: Inboard

Тип топлива: Diesel

ПОДРОБНОЕ ОПИСАНИЕ

Features

INTRODUCTION:

Designed by Groupe Finot, WATER MUSIC is a well-equipped 2-cabin 423. She is the perfect size for bay and coastal cruising with all the amenities you will need for weekend or extended voyages with great cruising features that include a Fischer Panda genset, reverse-cycle air conditioning, satellite television, and in-mast furling.

HIGHLIGHTS:

- 2-cabin, 2-head owner's version
- Yanmar direct drive diesel with 2,579 hours
- Fischer Panda generator, serviced 2018
- Reverse-cycle air conditioning and heat
- In-mast furling
- Custom Kato arch with dinghy davits
- Garmin 2016 chart plotter
- Garmin radar
- Full cockpit canvas enclosure

COCKPIT:

On any yacht, the cockpit is the most important space aboard. It is where you spend the majority of your day whether it is sailing, relaxing, or enjoying a nice evening meal aboard. The Beneteau 423 design does a great job of providing a spacious and functional area especially with the yacht's beam carried so far aft. The long cockpit seating offers plenty of space for sailing, entertaining, or having dinner. An updated Garmin chart plotter was installed at the helm in 2016. With radar, and an autopilot, you are ready for coastal cruising. All of the running rigging leads aft to the cockpit, making single-handing a breeze, especially with autopilot.

- Large cockpit comfortably seats 6
- Teak cockpit seating
- Bimini, dodger and full enclosure
- Updated Garmin 7610XSV GPSmap chart plotter at Edson pedestal, new 2016
- Centerline folding cockpit table with storage
- Edison pedestal with chart plotter
- VHF Horizon RAM radio mic
- Lewmar 54 primary winches, reachable from helm
- Lewmar 44 cabintop winches
- Running rigging all leads aft to cockpit
- Custom cockpit cushions

- Propane locker with (2) propane tanks
- Custom Kato arch with dinghy davits
- KVH Vision Satellite television dome mounted on arch

DECKS:

The beamy 423 features a very spacious cockpit that offers easy access to the wide side decks. 36" stanchions, lifelines, teak grab rails along the cabintop and jack line hookups allow for easy maneuverability in various conditions. The full cockpit enclosure offers protection from the elements. The custom Kato stern arch features Kato dinghy davits for the 2018 dinghy.

- Electric windlass with remote control
- 44# Delta anchor with 150ft. of 3/8" BBB anchor chain rode
- 35# Delta anchor with 15ft. of chain and 200' rode
- Storm anchor with 150' anchor rode and 15' chain
- Saltwater wash-down system
- Stainless steel Kato arch on stern with dinghy davits
- West Marine Hypalon dinghy new in 2018
- Honda four stroke outboard
- Bottom painted 2018 at Smiths, Micron CSC paint

MAIN SALON:

The main salon offers a large and comfortable interior space for lounging at the end of a cruising day. The gourmet galley lies to starboard, nav station to port and spacious main salon takes great advantage of the almost 14' beam. Reverse-cycle air conditioning and heat keep the salon cozy year round.

- 2-zone reverse-cycle AC and heat
- Large U-shaped settee to starboard
- Port settee features flat screen tv
- Large fixed center bench for added seating around the mahogany table
- Mahogany table comfortably seats 5
- 4 storage cabinets
- Opening overhead Lewmar ports
- Mounted flat screen TV
- DVD player
- JVC Stereo
- 120v outlets

GALLEY:

The large gourmet galley is aft of the salon just inside the companionway hatch. With storage cabinets along the starboard hull, a gimballed three-burner propane stove, two Adler Barbour refrigeration compartments, microwave and an ample amount of counter space, any cook will be

at home in the Beneteau 423 galley.

- Adler Barbour refrigeration – top and side loading
- Large double-sided stainless steel sink
- Force 10 Marine gimballed 3-burner stove and oven
- Designated trash compartment – tall kitchen size
- Deep storage below counter – top loading
- Overhead lighting
- Sharp microwave

NAVIGATION STATION:

The navigation station is located just inside the companionway hatch allowing for easy communication from the chart table to the helm. A Standard Horizon VHF, Raymarine ST60 multifunction display, and a Link 2000 battery monitoring panel and inverter control. There is also a 12V outlet in the AC and DC panel.

- Forward facing with 2ft chart table
- Raymarine ST60 multi-function display
- Standard Horizon VHF
- Xantrex LinkLITE battery monitoring panel
- BASS Beneteau AC and DC electric panel, above chart table
- JVC stereo with handheld remote
- Opening side port
- Overhead light

FORWARD OWNER'S CABIN:

The forward owner's cabin features an easy-access centerline berth. The cabin also features a private ensuite head to starboard. Opening side and overhead ports allow plenty of natural light and ventilation and reverse-cycle marine air conditioning and heat keep the cabin comfortable in any climate.

- Comfortable centerline queen with custom fitted bedding
- Private en-suite head to starboard
- Reverse-cycle air conditioning and heat
- (2) 12V fans
- Storage to port and starboard
- (2) Personal reading lights
- (2) Overhead opening Lewmar hatches for ventilation
- (3) Overhead cabin lights

AFT CABIN:

The aft cabin entrance lies to port of the companionway hatch. It features a double berth, air

conditioning, plenty of storage and natural light as well as direct access from the aft cabin to the aft head. The aft berth is a comfortable place sleeping while under way.

- Large double berth with 4" foam
- Reverse cycle marine air conditioning and heat
- Overhead opening hatches for ventilation, natural light
- (2) Personal reading lights
- Large hanging locker to port
- (2) Large storage shelves
- Access from stateroom to head
- 120v outlet

ELECTRONICS:

- Garmin 7610XSV GPSmap chart plotter, new 2016
- Garmin radar, mast mounted
- Raystar 125 GPS & new antenna installed in May 2012
- Raymarine ST60 multi data display
- Raymarine radar, mast mounted
- Raymarine 6000 autopilot
- Standard Horizon Intrepid+ VHF radio with Ram mic at helm
- JVC stereo with multi-disc changer
- Sylvania flatscreen TV in salon

ELECTRICAL:

- Fischer Panda generator, serviced 2018
- Batteries replaced 2017, AGM starting battery, (2) AGM D4 200w house batteries
- Heart Freedom 1500w inverter
- Link 2000 power battery monitor with remote
- (2) Precision AGM batteries, new 2017
- Beneteau 12V and 120V electric panel at nav station
- 30amp shore power input

MECHANICAL:

- 56hp Yanmar 4JH3 with 2,579 hours
- Alternator/smart regulator replaced 2015
- Fischer Panda generator with soundproof shield
- 2-zone air conditioning and heat, raw water pump and through-hull replaced
- Reverso automatic oil changer
- Lewmar electric windlass with remote, service 2015

RIGGING:

- In-mast furling mainsail, original and serviced regularly
- Roller furling headsail, original and serviced regularly
- Genneker sail gear
- Lewmar 54 primary winches
- Lewmar 44 cabintop winches
- Lewmar traveller and turning blocks
- 4:1 Main sheet for easy control
- Selden headsail furling
- All lines lead aft to cockpit

DAVE'S RATING:

When I travel with clients FAR out of town for yachts, I don't like surprises when I get there. It's embarrassing for me and can make for an expensive trip. With that in mind, I'd like to share my rating of various systems on the boat so you'll be as informed as possible before you come for a visit. My rating system is on a 1-10 scale with 10 being 'perfect' (in MY opinion). Please view this list as a GUIDE only. Everyone's idea of good and bad can vary quite a bit, depending on what you're after, what you've seen and how you look at things. My goal in doing this is to help you reach a comfort level with the boat before you invest time and energy to come and see it. I'll summarize by saying that this appears to be an excellent yacht worthy of serious consideration.

Beyond telling you what's great about a yacht, don't you also want to know what it needs next? Every yacht, no matter how turn-key, needs something. Every owner has next year's list of 'to-do's, right? I'll also include in this section what I think the boat could use to take her from nearly perfect to perfect and ready to go.

Overall – 9.0/10.0

WATER MUSIC shows quite well and has been lovingly cared for. She's fifteen years old but she looks like younger. Here on the Chesapeake Bay, we have about a seven month sailing season. Why is this relevant? Simple -- the other five months out the year, this boat is on land, winterized, shrink wrapped, and tucked away for storage. Every spring, she gets a fresh commissioning, wash & wax job, new bottom paint and a relaunch. She has aged well due to the diligence of extremely conscientious and thoughtful owners. WATER MUSIC is very well equipped for coastal cruising and the generator is a great cruising bonus. WATER MUSIC is ready to set sail for coastal cruising.

Overall, what does WATER MUSIC need? I honestly can't think of anything if your goal is to sail the Chesapeake on weekends and week-long adventures between NYC and Beaufort, NC. For those of you who want to take on longer distance adventures to New England, Florida or the Caribbean, you might consider adding these items:

- Updating the sail inventory for offshore sailing. The current sails are in good shape, but like any fifteen year old sails, have stretched over time. While they are completely capable of handling all forms of bay and coastal cruising, we would update them if you are

planning on any long offshore passages.

- more batteries perhaps for longer off-shore runs without having to run the engine
- a nav station repeater of the radar/chart and autopilot remote would be nice for long range cruising
- a water maker if you hope to anchor for days/weeks at a time in the Caribbean

Design – 10.0/10.0

You can't do better than the architecturally functional layout of this yacht. Every space is smartly conceived to enhance your cruising experience. The owner's version of the 423 offers very livable spaces. The main salon is huge and comfortable for a couple or a group. I'm the chef on my boat so galleys are of particular interest to me. WATER MUSIC's galley is beautifully designed with oodles of storage, nice appliances and plenty of counter space -- it just works.

Interior – 8.5/10.0

The upholstery is very durable and spotless. The flooring is in excellent shape. All the teak joinery shows well. The galley, sink, counter tops, stove and oven look like they've been lightly used. There has been some oxidation of some of the reading lights and the edges of the vanity mirrors (very common in all beneteaus).

Exterior – 9.5/10.0

Her gelcoat and exterior finishes are holding up very well and get washed continuously and waxed. Her decks are pristine. The spacious cockpit is well protected by a full enclosure. The bottom was just painted in 2018. The custom Kato arch and dinghy davits are a great addition. The windlass could use some touch-up paint cosmetically, but was serviced and is in great working order. The exterior teak is kept natural and is in good condition.

Electronics – 10.0/10.0

Love the Garmin and Raymarine suite of electronics. You have everything you need for cruising. The Garmin chart plotter and radar were new in 2016 and offer an integrated system with the Raymarine data and autopilot.

Propulsion – 10.0/10.0

The quality and diligence of an owner are most often gauged in this space. WATER MUSIC has enjoyed a very conscientious owner who has kept systems healthy and functional. The layout of the engine room facilitates very easy access to everything for regular maintenance. This makes it easier (and cheaper) to keep them in top condition. The opening engine hatch along with access panels in the aft stateroom and galley all give you unfettered access to everything. With 2579 hours since new, the engine is in good shape. The alternator and smart regulator were replaced in 2015.

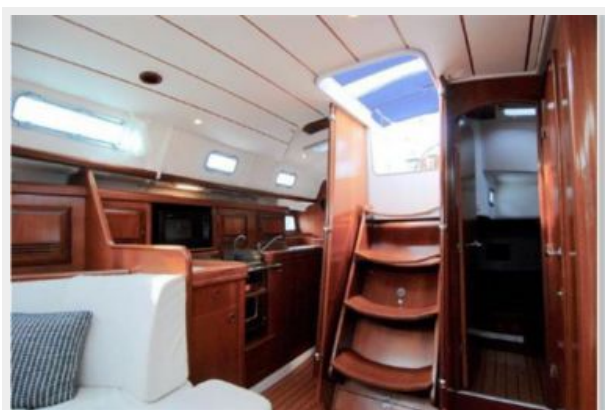
Исключения

При продаже яхты исключаются личные вещи владельца.

Отказ от ответственности

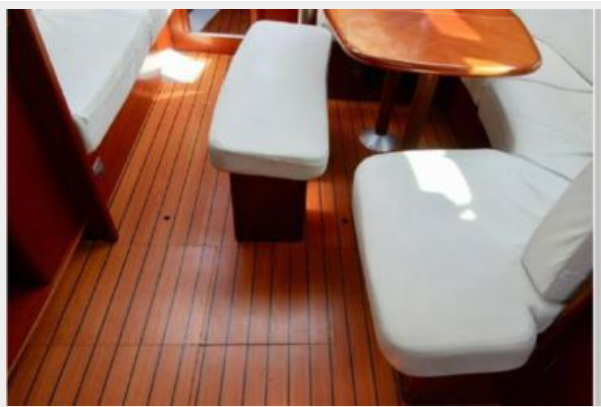
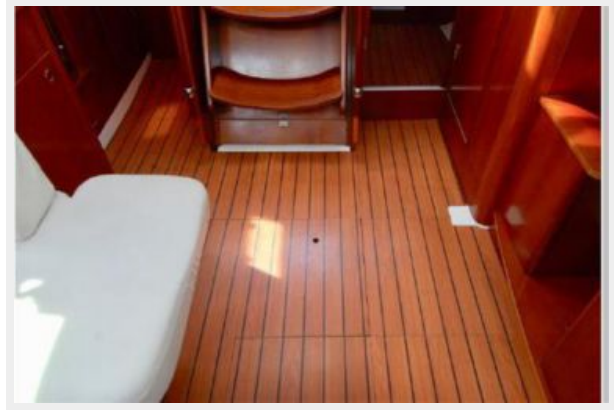
Компания предоставляет описание судна или яхты добросовестно, но не может гарантировать точность этой информации, а также не ручается за техническое состояние. Покупатель должен проинструктировать своих агентов или оценщиков исследовать представленную информацию более подробно, по собственному желанию. Продажа судна или яхты, изменение цены или снятие с продажи будет происходить без предварительного уведомления.

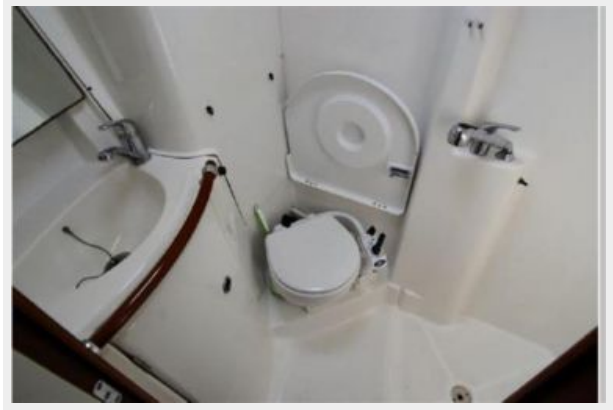
ФОТОГРАФИИ

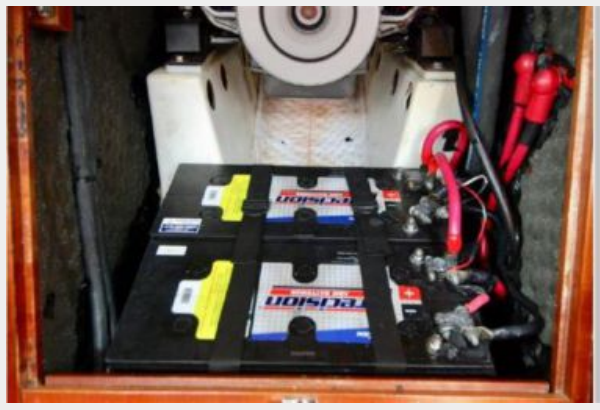


















КОНТАКТЫ

Андрей Шестаков (Andrey Shestakov) – ведущий яхтенный брокер отдела продаж яхт и судов компании Shestakov Yacht Sales Inc. Официальный представитель Shestakov Yacht Sales Inc. для русскоговорящих клиентов в центральном офисе компании в Майами/Форт Лодердейл/Флорида/США.

Контактная информация

Email: **andrey@shestakovyachtsales.com**

Web: shestakovyachtsales.com

Телефоны

Краснодарский край: **+7(918)465-66-44**

США, Майами, Флорида: **+1(954)274-4435**

Время работы

Понедельник – Суббота: **9:00 - 21:00**
EDT

Воскресенье: **Закрето**

Адрес



Harbour Towne Marina, 850 NE 3rd St,
STE 213, Dania, FL 33004