

I SEA U — BERTRAM



Builder: BERTRAM

Year Built: 1985

Model: Sport Fisherman

Price: PRICE ON APPLICATION

Location: United States

LOA: 46' 0" (14.02m)

Beam: 16' 0" (4.88m)

Max Draft: 4' 6" (1.37m)

Our experienced yacht broker, Andrey Shestakov, will help you choose and buy a yacht that best suits your needs **I SEA U — BERTRAM** from our catalogue. Presently, at Shestakov Yacht Sales Inc., we have a wide variety of yachts available on our sale's list. We also work in close contact with all the big yacht manufacturers from all over the world.

If you would like to buy a yacht **I SEA U — BERTRAM** or would like help answering any questions concerning purchasing, selling or chartering a yacht, please call **+1(954)274-4435**

TABLE OF CONTENTS

TABLE OF CONTENTS	2
SPECIFICATIONS	4
Overview	4
Basic Information	4
Dimensions	4
Speed, Capacities and Weight	4
Accommodations	4
Hull and Deck Information	4
Engine Information	5
DETAILED INFORMATION	6
Overview	6
Salon	6
Galley	6
Master Stateroom	6
VIP Stateroom	7
Cockpit	7
Flybridge	7
Bow	7
Electronics & Navigation	8
Engines	8
Exclusions	8
Disclaimer	8
PHOTOS	10
CONTACTS	17
Contact details	17
Telephones	17
Office hours	17
Address	17

SPECIFICATIONS

Overview

The Bertram 46 Convertible is a legendary fishing machine. One of the most popular convertibles ever designed she dominated the market for over a decade. This is a serious fisherman with flybridge very well equipped cockpit.

Basic Information

Category: Sport Fisherman

Model Year: 1985

Year Built: 1985

Country: United States

Dimensions

LOA: 46' 0" (14.02m)

Beam: 16' 0" (4.88m)

Max Draft: 4' 6" (1.37m)

Speed, Capacities and Weight

Water Capacity: 246 Gallons

Fuel Capacity: 720 Gallons

Accommodations

Total Cabins: 2

Total Heads: 2

Hull and Deck Information

Hull Material: Fiberglass

Engine Information

Engines: 2

Manufacturer: Detroit Diesel

Engine Type: Inboard

Fuel Type: Diesel

DETAILED INFORMATION

Overview

The Bertram 46III Convertible is truly a high-powered performer built to smooth pounding waves down to size. Notoriously popular as a fishing machine, she's also ideal for weekend cruising. There's a queen-sized walk-around berth forward, real oak throughout the interior, and a long list of accoutrements.

Salon

- Formica counter tops
- Sony 5 disc player
- Panasonic DVD player
- Denon in command series AM/FM Tuner/Receiver
- Sony VHS cassette player
- 19" TV Naxa
- Teak table
- L-shaped leather sofa
- Custom storage cabinets
- Distribution panel 120vac and 32 volt DC
- Wood louvered blinds
- Wood Floor
- (2) Swivel Chairs
- Satellite TV
- Interior Speakers
- Kenmore vacuum cleaner

Galley

- Panasonic microwave
- Corian counter tops
- G.E Eterna household style refrigerator/freezer
- Princess 3 burner electric stove top
- Single basin stainless sink
- Formica/wood trimmed cabinets
- Ample storage - pantry
- Teak/holly floors

Master Stateroom

- Queen bed - storage under bed
- STB Storage cabinets
- (2) Hanging locker
- Private head
- Samsung 15" TV
- Carpet throughout

VIP Stateroom

- V Berth Forward
- Cabin/hallway head access
- Hanging locker
- Drawers under bed
- Carpeting throughout

Cockpit

- Two full heads with showers
- Teak/holly floors,
- Galley maid heads.
- Mirror vanities
- Storage

Flybridge

- Canvas with aluminum frame rails/6 rod holder
- Custom electronics box/plexiglass covers
- Tuna Tower
- Phone booth style helm enclosure
- Combing pads- bench seat fwd of helm
- Two ladder back helm chairs
- Rupp tripple spreader outriggers
- New Eisenglass

Bow

- Full aluminum bow rail/pulpit
- Electric windlass Lofran
- Windshield covers
- Novarania 13' Dingy with Yamaha 40HP

- Marquip Davit

Electronics & Navigation

- 2 EPIRPS
- Standard Horizon VHF
- ICOM -IC 412 VHF
- Electronic Control
- Furuno 48 Mile Radar
- NAV Net CMAP VX2 NTMAX
- GPS Map 740S
- JL Audio Speakers
- Simrad Autopilot AP 28
- Richie Compass
- Furuno Color Video FLV292
- Clarion Radio
- ACR Search Light
- Raymarine ST60 Depth finder

Engines

- Detroit Diesel Series 735 HP x 2
- Port Motor rebuilt on 1/18 100 Hours
- STBD Rebuilt on 10/18 5 Hours
- Generator Kohler 12.5 KW
- Fuel Transfer
- Reversal oil lube transfer
- Single lever control
- Engine Synchronizer
- Spare Props

Exclusions

Owner's personal belongings.

Disclaimer

The Company offers the details of this vessel or yacht in good faith but cannot guarantee or warrant the accuracy of this information nor warrant the condition of the vessel. A buyer should instruct his representatives, agents, or his surveyors, to investigate such details as the buyer desires validated. This vessel or yacht is offered subject to prior sale, price change, or withdrawal

without notice.

PHOTOS

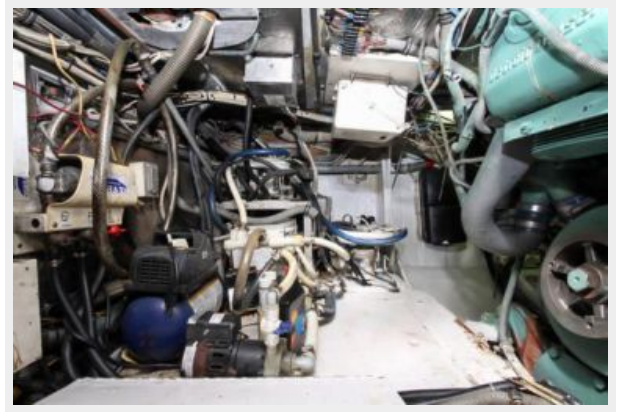














CONTACTS

Andrey Shestakov, leading yacht broker of the sales department of Shestakov Yacht Sales Inc. Shestakov Yacht Sales Inc., the official representative of the Miami/Fort Lauderdale FL headquarters.

Contact details

Email: andrey@shestakovyachtsales.com

Web: shestakovyachtsales.com/en/

Telephones

USA: +1(954)274-4435

Office hours

Monday – Saturday: **9:00 - 21:00** EDT

Sunday: **closed**

Address



Harbour Towne Marina, 850 NE 3rd St,
STE 213, Dania, FL 33004