

## DOUBLE O SEVEN — FAIRLINE



**Builder:** FAIRLINE

**Year Built:** 2009

**Model:** Motor Yacht

**Price:** PRICE ON APPLICATION

**Location:** France

**LOA:** 78' 0" (23.77m)

**Beam:** 18' 8" (5.69m)

**Max Draft:** 5' 3" (1.60m)

**Cruise Speed:** 22 Kts. (25 MPH)

**Max Speed:** 30 Kts. (35 MPH)

Our experienced yacht broker, Andrey Shestakov, will help you choose and buy a yacht that best suits your needs **DOUBLE O SEVEN — FAIRLINE** from our catalogue. Presently, at Shestakov Yacht Sales Inc., we have a wide variety of yachts available on our sale's list. We also work in close contact with all the big yacht manufacturers from all over the world.

If you would like to buy a yacht **DOUBLE O SEVEN — FAIRLINE** or would like help answering any questions concerning purchasing, selling or chartering a yacht, please call **+1(954)274-4435**

# TABLE OF CONTENTS

TABLE OF CONTENTS	2
SPECIFICATIONS	4
Overview	4
Basic Information	4
Dimensions	4
Speed, Capacities and Weight	4
Accommodations	5
Hull and Deck Information	5
Engine Information	5
DETAILED INFORMATION	6
Overview	6
Construction	6
Main Machinery	6
Electrical Equipment	6
Deck Equipment	7
Navigation and Communication Equipment	7
Galley and Laundry Equipment	7
Entertainment Systems	7
Tenders and Toys	8
Exclusions	8
Disclaimer	8
PHOTOS	9
Main Salon	9
Main Salon	9
Dining Area	9
Dining Area	9
Galley	9
Galley	9

Master Stateroom	10
Master Stateroom	10
Master Bath	10
VIP Stateroom	10
VIP Stateroom	10
VIP Bath	10
Twin Stateroom	11
Guest Bath	11
Helm	11
Flybridge	11
Flybridge	11
Flybridge	11
Foredeck	12
Aft Deck	12
Aft Deck	12
Port Profile	12
Starboard Running	12
Port Profile	12
Layout	13
CONTACTS	14
Contact details	14
Telephones	14
Office hours	14
Address	14

# SPECIFICATIONS

## Overview

This Fairline Squadron 78 offers generous living areas inside and out. Her chic modern decor with luxury furnishings and beautiful woods provide the perfect setting for stylish yachting in the Mediterranean. The spacious outdoor areas provide alfresco dining on both the aft deck and the Bimini-shaded flybridge. DOUBLE O SEVEN offers comfort and style, perfect for cruising with family and friends.

## Basic Information

Category: Motor Yacht	Model Year: 2009
Year Built: 2009	Country: France

## Dimensions

LOA: 78' 0" (23.77m)	Beam: 18' 8" (5.69m)
Max Draft: 5' 3" (1.60m)	

## Speed, Capacities and Weight

Cruise Speed: 22 Kts. (25 MPH)	Max Speed: 30 Kts. (35 MPH)
Gross Tonnage: 46 Pounds	Water Capacity: 301.15613928 Gallons
Holding Tank: 136.576950884 Gallons	Fuel Capacity: 1556.501730384 Gallons

## Accommodations

Total Cabins: 4	Total Berths: 4
Sleeps: 8	Total Heads: 3
Crew Cabin: 1	Crew Berths: 2
Crew Sleeps: 2	

## Hull and Deck Information

Hull Material: GRP	Deck Material: Teak
Hull Configuration: Deep Vee	

## Engine Information

Engines: 2	Manufacturer: Caterpillar
Model: C32	Fuel Type: Diesel

---

# DETAILED INFORMATION

---

## Overview

---

\*Not available for sale to US residents while in US waters.

This Fairline Squadron 78 offers generous living areas inside and out. Her chic modern decor with luxury furnishings and beautiful woods provide the perfect setting for stylish yachting in the Mediterranean. The spacious outdoor areas provide alfresco dining on both the aft deck and the Bimini-shaded flybridge. DOUBLE O SEVEN offers comfort and style, perfect for cruising with family and friends.

## Construction

---

• Deck/ Side deck: Teak • Hull and structure: GRP / Gelcoat white • Flaps: Aluminum • Cockpit/Fly bridge: All in teak • Superstructure: GRP / Gelcoat white

## Main Machinery

---

• Twin Caterpillar C32 1,572hp diesel engines • Engine Hours: Port 1,584; Starboard 1,574 • 4-Blade NIBRAL propellers • Gearbox: Direct line • 2 x ONAN 22.5kW generators • Generator Hours: Port 2,578; Starboard 2,573 • Alarm system: Sea Fire system (fire) • Steering wheel: Hydraulic Hypo Marine • Thruster: Side power (Bow 25 hp. & Stern 20 hp.)

## Electrical Equipment

---

• CCTV (flybridge and engine room) Batteries • Engine batteries: 4 separate batteries 200amps / 24volts for port (2) and starboard (2) engine. • Service batteries: 4 x batteries 400amps / 24volts linked together • All batteries are original from the delivery of the boat at the shipyard (Gel batteries) • Double shore plug located at the transom of the boat with electric Glendenning • Inverter MASTERVOLT Massline 24 V • One alternator on each engine to charge batteries, service and engine (MASTERVOLT 90848 - 24V / 150A) • Battery charger: 1 x MASTERVOLT 24 V/100A + 1 x MASTERVOLT 24 V/75A + MASTERVOLT 1 x 12 V/ 60A Tankage • Fuel capacity: 1,556 gallons; 5,892 litres (2 x aluminum tanks) • Fresh water capacity: 335 gallons; 1,269 litres (2 tanks) • Dark water: 136 gallons; 517 litres (3 x tanks) Water systems • Bilge pump: 5 x Automatic bilge pumps with a capacity of 4,200 L/h are installed in the boat (One in VIP cabin - One in master cabin - Two in engine room - One in crew area) • 3 x Manual bilge pumps are installed in the boat (One located on the bow / One in engine room / Last one on the aft). Only one pump can be used • Freshwater: Hot & Cold-water pressure per an electric pump running on 24 volts • A boiler with 137 litres is installed on board (shore power, generator, engines running) Swimming shower: • HRO - Horizon Sea Fari model H1212000630 - 70 L/H • Shower located on

swimming platform with faucet hot & cold faucet Air conditioning: • Reversible air conditioning throughout

## Deck Equipment

• Anchor: DELTA 40 KG Stainless Steel • Chain: 120m Stainless Steel • Windlass: LEWMAR hydraulic • Indicator: Digital electric counter • Gangway: BESENZONI 3.3m in letterbox • Capstan: 2 x LEWMAR at both stern side • Swimming platform: Access on portside • Crane: BESENZONI on fly

## Navigation and Communication Equipment

Main Deck • RAYMARINE E120- GPS chart plotter/sounder • RAYMARINE E80- Radom • RAYMARINE ST7002 - Automatic pilot • RAYMARINE RAY 240E - VHF • RAYMARINE ST60+ - Tridata • LEWMAR AA560 - Chain indicator • DANFORTH Navigation compass • ACR - command for the 360° turning light navigation • SEA FIRE System - control of extinguisher • Lenco FLAPS - flaps control with indicator • SIDE POWER control - joysticks for bow and stern hydraulic thruster • VDO instrumentation - visual engines indicators (temperature, oil pressure, tanks) • VDO steering wheel indicator • Electric engine control ZF • Chart map navigation light • RICARDO full electric adjustable helm seat • 12V socket • MASTERVOLT monitor BTM - III / Full electric charger viewing • Full electric control panel • CATERPILLAR engine computer 2860223-00 (One for each engine) Flybridge Helm • RAYMARINE E120- GPS chart plotter/sounder • RAYMARINE E120- GPS Radom • RAYMARINE ST 7002 - Automatic pilot • RAYMARINE RAY 240 E-VHF • DANFORTH navigation compass • ACR - command for the 360° turning light navigation • SEA FIRE System - control of extinguisher • Lenco FLAPS - flaps control with indicator • SIDE POWER control - joysticks for bow and stern hydraulic thruster • VDO instrumentation - visual engines indicators (temperature, oil pressure, tanks) • VDO steering wheel indicator • Electric engine control ZF • 12V socket

## Galley and Laundry Equipment

Galley • Fridge: 2 x Whirlpool Subzero 700 BC • Freezer: 2 x Whirlpool Subzero 700 BC • Stovetop: De Dietrich 4-Induction burners • Dishwasher: Miele G1162SCVi • Microwave: 2 x Miele • Ice maker: Uline (flybridge) • Sink: 1 x Stainless-steel • Side door: Yes (both sides) Laundry • Washer/Dryer: Zanussi Crew Quarters with Small Crew Mess • Sharp Microwave • Vittrifigo 70L refrigerator

## Entertainment Systems

Salon • TV LDC LOEWE SPHEROS 40" • Satellite KVH • Bang Olufsen home audio system • Satellite receiver Topfiel TF6060CI • iPhone dock Master cabin • TV LCD LOEWE XELOS •

---

Bose 123 audio system • Satellite receiver Topfiel TF6060CI • DVD player • Dock iPhone VIP cabin • TV LCD LAVA • Dock Bose for iPhone/iPod • DVD player TWIN cabins • TV LCD LAVA • Dock Bose for iPhone/iPod • DVD player

## Tenders and Toys

---

• Williams 380 jet tender • Sea-Doo jet ski

## Exclusions

---

Owner's personal belongings.

## Disclaimer

---

The Company offers the details of this vessel or yacht in good faith but cannot guarantee or warrant the accuracy of this information nor warrant the condition of the vessel. A buyer should instruct his representatives, agents, or his surveyors, to investigate such details as the buyer desires validated. This vessel or yacht is offered subject to prior sale, price change, or withdrawal without notice.



# PHOTOS

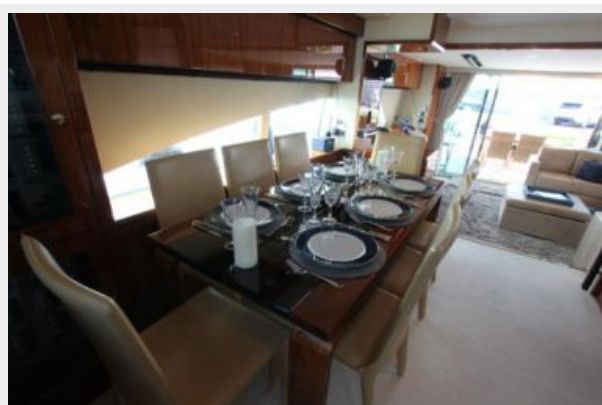
## Main Salon



## Main Salon



## Dining Area



## Dining Area



## Galley



## Galley



**Master Stateroom****Master Stateroom****Master Bath****VIP Stateroom****VIP Stateroom****VIP Bath**



**Twin Stateroom**



**Guest Bath**



**Helm**



**Flybridge**



**Flybridge**



**Flybridge**



**Foredeck**



**Aft Deck**



**Aft Deck**



**Port Profile**



**Starboard Running**



**Port Profile**



## Layout



# CONTACTS

---

Andrey Shestakov, leading yacht broker of the sales department of Shestakov Yacht Sales Inc. Shestakov Yacht Sales Inc., the official representative of the Miami/Fort Lauderdale FL headquarters.

## Contact details

---

Email: **andrey@shestakovyachtsales.com**

Web: [shestakovyachtsales.com/en/](http://shestakovyachtsales.com/en/)

## Telephones

---

USA: **+1(954)274-4435**

## Office hours

---

Monday – Saturday: **9:00 - 21:00 EDT**

Sunday: **closed**

## Address

---



Harbour Towne Marina, 850 NE 3rd St,  
STE 213, Dania, FL 33004