

40 1995 CATALINA 400 — CATALINA



Судостроитель: CATALINA

Год постройки: 1995

Модель: Крейсерская яхта

Цена: **ЦЕНА ЯХТЫ ПО ЗАПРОСУ**

Местонахождение: United States

Длина общая: 40' 0" (12.19m)

Ширина: 13' 5" (4.09m)

Макс. осадка: 5' 6" (1.68m)

Крейс. скорость: 6 Kts. (7 MPH)

Макс. скорость: 7 Kts. (8 MPH)

Купить 40 1995 Catalina 400 — CATALINA а также выбрать подходящую вам яхту из нашего каталога яхт вам поможет опытный яхтенный брокер Андрей Шестаков. На сегодняшний день компания Shestakov Yacht Sales Inc. имеет большое количество яхт в собственном списке продаж, а также тесно сотрудничает со всеми крупными яхтенными производителями по всему миру.

Для того чтобы купить яхту 40 1995 Catalina 400 — CATALINA а также проконсультироваться по любому вопросу связанному с покупкой, продажей, чартером яхт позвоните по телефону **+7(918)465-66-44**.

ОГЛАВЛЕНИЕ

ОГЛАВЛЕНИЕ	2
ХАРАКТЕРИСТИКИ	3
Обзор	3
Основная информация	3
Размеры	4
Скорость, вместимость и масса	4
Размещение	4
Корпус и палуба	4
Информация о двигателе	4
ПОДРОБНОЕ ОПИСАНИЕ	5
Features	5
Исключения	10
Отказ от ответственности	10
ФОТОГРАФИИ	11
КОНТАКТЫ	20
Контактная информация	20
Телефоны	20
Время работы	20
Адрес	20

ХАРАКТЕРИСТИКИ

Обзор

Price Drop! SUPER motivated seller!

The Catalina 400 offers three notable benefits over other yachts in her class. Her super wide cockpit and twin helm layout make for an amazingly accommodating outside space” years before twin helms became the norm for yachts this size.

Below decks, this extra beam affords a huge owner's stateroom aft with a centerline queen berth with easy access from both sides of the cabin. Third, extra beam amidships leading aft leaves a ton of space for an amazing galley.

HIGHLIGHTS:

- 2 cabin/2 head layout with centerline queen owner's stateroom aft
- Huge gourmet galley with fantastic storage and dual refrigeration
- Beamy cockpit with twin wheels and lots of seating for crew and guests
- Two-zone reverse-cycle marine air conditioning
- Cockpit arch with dinghy davits and wind generator
- Updated exterior canvas
- Dinghy & outboard

Catalina built their first yachts in 1969 and immediately made their mark on the cruising word with the innovations of designer Frank Butler. Over the following five decades, Catalina has produced a number of outstanding yachts, winning accolades and industry awards including fifteen boats of the year awards thanks to their quality and continued innovation.

This Catalina 400 debuted in 1995 as a new and expanded version of their 380 model. They would go on to build 353 copies of this model over the next 17 years, a testament to the design and build quality of this yacht and the Catalina brand.

Основная информация

Тип судна: Крейсерская яхта

Модельный год: 1995

Год постройки: 1995

Страна: United States

Размеры

Длина общая: 40' 0" (12.19m)

Длина по ватерлинии: 30' 5" (9.27m)

Ширина: 13' 5" (4.09m)

Макс. осадка: 5' 6" (1.68m)

Трапы: 58' 0" (17.68m)

Скорость, вместимость и масса

Крейс. скорость: 6 Kts. (7 MPH)

Крейсерская скорость поворота: 2700 Kts.

Макс. скорость: 7 Kts. (8 MPH)

Водоизмещение: 20500 Pounds

Вместимость воды: 107 Gallons

Вместимость сточного бака: 36 Gallons

Объем топливного бака: 44 Gallons

Размещение

Всего кают: 2

Всего коек: 2

Всего ком. состава: 2

Корпус и палуба

Материал корпуса: Fiberglass

Комплектация корпуса: Bulb Keel

Информация о двигателе

Двигатели: 1

Производитель: Westerbeke

Модель: 42B

Тип двигателя: Inboard

Тип топлива: Diesel

ПОДРОБНОЕ ОПИСАНИЕ

Features

INTRODUCTION:

Catalina built their first yachts in 1969 and immediately made their mark on the cruising world with the innovations of designer Frank Butler. Over the following five decades, Catalina has produced a number of outstanding yachts, winning accolades and industry awards including fifteen 'boat of the year' awards thanks to their quality and continued innovation.

This Catalina 400 debuted in 1995 as a new and expanded version of their 380 model. They would go on to build 102 copies of this model over the next 17 years, a testament to the design and build quality of this yacht and the Catalina brand.

The Catalina 400 offers three notable benefits over other yachts in her class. Her super wide cockpit and twin helm layout make for an amazingly accommodating outside space — years before twin helms became the norm for yachts this size. Below decks, this extra beam affords a huge owner's stateroom aft with a centerline queen berth with easy access from both sides of the cabin. Third, extra beam amidships leading aft leaves a ton of space for an amazing galley.

HIGHLIGHTS:

- 2 cabin/2 head layout with centerline queen owner's stateroom aft
- Huge gourmet galley with fantastic storage and dual refrigeration
- Beamy cockpit with twin wheels and lots of seating for crew and guests
- Two-zone reverse-cycle marine air conditioning
- Cockpit arch with dinghy davits and wind generator
- Updated exterior canvas
- Dinghy & outboard

COCKPIT:

On any yacht, the cockpit is the most important space aboard. It is where you spend the majority of your day whether it is sailing, relaxing, or enjoying a nice evening meal aboard. The Catalina 400 design does a great job of providing a spacious and functional area, especially with the yacht's beam carried so far aft. The twin wheel configuration allows for easy passage space from the sugar scoop swim platform all the way forward to the centerline companionway hatch. All rigging leads aft and the primary winches are easily reachable from each helm, making single-handing a breeze.

- Large u-shaped cockpit seating with 5'8" cockpit seats
- Twin helms with 36" wheels, two person seating aft of each
- Large centerline folding table with fixed foot bracing for athletic sailing
- Center storage in cockpit table

- Garmin GPSmap 740s chart plotter mounted at centerline table
- Raymarine ST60+ autopilot
- Raymarine ST60+ wind instrument
- Raymarine ST60+ depth instrument
- Raymarine ST60+ speed instrument
- (2) Ritchie compasses, one at each helm (air bubble in each one)
- Lewmar 58 self-tailing primary winches, reachable from helms
- Lewmar 40 self-tailing halyard winches at cabin top
- All rigging lines lead aft to cockpit
- Bimini-dodger combo creates one large covering with amazing headroom
- Garmin GPS – rail mounted port stern
- Outboard motor mount – port stern rail
- Stern arch with dinghy hoist system – 3:1 pull
- Air30 wind machine – mounted on stern arch
- Fold down swim ladder opens to sugar scoop swim platform with two seats and storage below
- (2) Marine speakers in cockpit for stereo
- (6) Cup holders at cockpit table
- Easy steps to companionway hatch
- (2) Deep storage lockers below helm seats

RIGGING AND SAILS:

CHANGING CHANNELS has a flaking mainsail with a Dutchman system for easy handling as well as a roller furling headsail. All of the rigging leads aft to the cockpit. With large primaries within reach of each helm, this yacht can easily be single-handed. The yacht also has an autopilot, which allows you to completely step away from the helm to tweak sail shape.

- Flaking mainsail with Dutchman system
- All running rigging leads aft to Lewmar stops
- Inner track jib sheet blocks
- Garhauer traveler forward of the companionway hatch
- Rigid boom vang
- Schaeffer 3000 headsail furling
- Garhauer rigging blocks
- In-mast halyard lines

DECK:

The decks of the Catalina 400 are easily navigable with wide side decks offering an easy path forward to the bow. No exterior teak means low maintenance! Stainless steel grab rails lead forward along the cabintop which is an easy step up from the side decks. The aft swim platform offers a comfortable and easily boarding location for swimming, getting aboard the dinghy, and getting on and off from a floating pier. Port and starboard board gates provide easy passage

through the lifelines.

- Maxwell 800 windlass, mounted in the anchor locker
- Rocna 35lb. anchor with 3/8" chain and rode
- (6) Deck mounted cleats
- LED running lights
- Lifelines and 36" stanchions
- Steel toe rail
- Lewmar deck hatches
- Stainless steel grab rails along cabin top
- PlexiGlass white skylights in cabin top
- Starboard and port boarding gates forward of the cockpit
- Sugar scoop swim platform with two stern seats and storage compartments
- Non-skid side and top decks
- Lewmar side ports along cabin top
- Water and diesel deck fills on starboard deck
- Waste pump-out on port deck
- (2) 30amp shore power inlets at swim platform

MAIN SALON:

Below decks, you will find a warm rich and inviting interior space for lounging at the end of a cruising day. A gourmet galley lies to starboard, nav station to port, and a spacious main salon that takes advantage of CHANGING CHANNELS' 13'5" beam. Reverse-cycle marine air conditioning and heat help make the salon a comfortable lounge space year round.

- Large U-shaped starboard settee with exchangeable poles to make a large double berth
- Starboard table comfortably seats 5
- CruisAir reverse-cycle marine air conditioning and heat – 12,000BTU
- Long settee to port forward of nav station – 6'4" long
- (4) Large storage cabinets with sliding cabinet doors
- (3) Caframo cabin fans
- Brass reading lights
- (2) Stereo speakers mounted above cabinetry
- (3) Overhead Lewmar hatches for ventilation and natural light
- (2) Large sky lights (opaque white) for added light
- (4) Opening Lewmar ports along cabin top
- (2) Fixed Lewmar side ports
- Teak and holly floor
- Air conditioning control forward of port settee
- (8) Storage shelves behind settees
- Additional storage behind and below settee cushions
- (5) Overhead LED lights
- Weems & Plath ships clock and barometer mounted forward of port settee

GALLEY:

A large gourmet galley greets you to starboard as you come down the companionway hatch. Chefs always demand counter space on either side of the sink and cooktop and the Catalina 400 delivers. There is plenty of deep storage and lots of refrigerator and freezer space. There is even a designated storage spot for trash. This galley works!

- U-shaped galley with TONS of counter space and storage
- Adler Barbour refrigeration, top and side loading
- Frigoboat freezer, top loading
- Princess 3-burner propane stove and oven, gimbale
- Princess classic collection II microwave over stove
- Deep double-bowl stainless steel sink and stainless steel faucet
- Retractable additional faucet for washing versatility
- Designated trash compartment to the left of sink
- Deep pot/pan storage to right of stove – top loading
- (3) hinged cabinets above the counter
- Spice rack cabinet
- (4) Pullout drawers
- (3) Below-counter cabinets
- Additional pot/pan storage cabinet below oven

AFT CABIN:

The aft cabin of the Catalina 400 is palatial, stretching all the way across the beam of the stern with a centerline queen bed and comfortable seating, nightstands and storage on both the port and starboard. The aft cabin has direct access to the aft head.

- Large centerline queen berth with pillow-top mattress
- CruisAir reverse-cycle air conditioning and heat
- Seating on both sides of cabin
- Nightstand storage shelves and top-loading storage cabinets to port and starboard
- Cabinetry along each side of hull with sliding door cabinets and shelving
- Cedar hanging closet to port
- Double cedar cabinet to starboard
- Vanity mirror opens up window into main salon/galley space
- (2) Pullout drawers above engine room
- (2) Overhead LED lights
- (2) Brass personal reading lights
- (2) Campano cabin fans
- (2) Large Lewmar hatches open to cockpit
- (3) Smaller Lewmar hatches for added natural light and ventilation
- Air conditioning & heat control panel to starboard
- (2) 120V outlets

- Direct access to aft head

AFT HEAD:

The aft head is located just inside the companionway hatch to port, aft of the nav station. It is a large head that can be divided with a shower curtain to a separate shower space. There is dual access from both the salon and the aft cabin.

- Located to port aft of the nav station
- Accessed from companionway area and from aft cabin
- Manual head – forward facing
- Vanity with Corian countertop and retractable faucet that doubles as a showerhead
- Vanity storage with sliding mirror doors
- Separate shower space forward of head with track for dividing shower curtain
- Large storage locker forward of vanity
- (2) Storage locker forward of vanity
- Fiberglass floor for quick-dry environment
- (3) Overhead lights
- Large fixed side ports
- Opening Lewmar port at cabin top side
- (1) 120V outlet
- Stainless steel towel rod and weather gear hooks

FORWARD CABIN:

The forward cabin has a wide v-berth that comfortably sleeps two. This cabin also has air conditioning and heat as well as an en-suite private head. With storage, large opening ports for ventilation and light, overhead lighting and personal reading lights, the forward cabin offers a comfortable place to relax after a day of sailing.

- V-berth double bed with 4” marine foam
- Reverse-cycle air conditioning and heat
- Large overhead Lewmar opening hatch
- Smaller Lewmar hatch aft of large overhead hatch
- Opening side port
- Brass reading lights
- Cabin fan to port
- Private access to forward head

EN-SUITE HEAD:

- Located in forward suite to starboard
- Manual head

- Single vanity with Corian countertop
- Retractable faucet doubles as a showerhead
- Overhead opening Lewmar hatch
- Opening side port in cabintop
- Dry locker storage below sink
- Mirror vanity storage with sliding panel access
- Large vanity mirror on aft bulkhead

NAV STATION:

The nav station is centrally located just inside the companionway, aft of the port salon settee. A Garmin GPSmap 127C chart plotter, stereo control, VHF radio, flat screen TV and the main electric panel are all right above the chart table. The chart table seat swings out for easy access.

- Spacious chart table with hinged storage
- Garmin GPSmap 127C chart plotter
- Standard Horizon Explorer VHF radio with mic
- Pioneer stereo and CD player
- Sharp flat screen TV
- Fuel gauge
- Catalina electric panel 12v/120v controls

Исключения

При продаже яхты исключаются личные вещи владельца.

Отказ от ответственности

Компания предоставляет описание судна или яхты добросовестно, но не может гарантировать точность этой информации, а также не ручается за техническое состояние. Покупатель должен проинструктировать своих агентов или оценщиков исследовать представленную информацию более подробно, по собственному желанию. Продажа судна или яхты, изменение цены или снятие с продажи будет происходить без предварительного уведомления.

ФОТОГРАФИИ



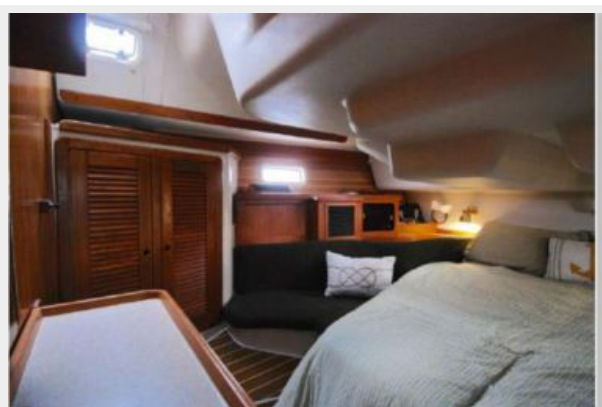


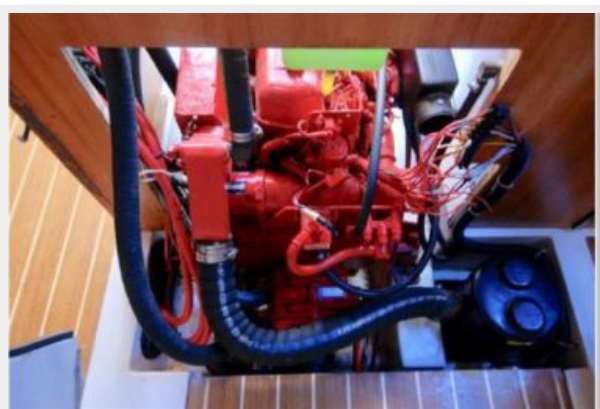














КОНТАКТЫ

Андрей Шестаков (Andrey Shestakov) – ведущий яхтенный брокер отдела продаж яхт и судов компании Shestakov Yacht Sales Inc. Официальный представитель Shestakov Yacht Sales Inc. для русскоговорящих клиентов в центральном офисе компании в Майами/Форт Лодердейл/Флорида/США.

Контактная информация

Email: andrey@shestakovyachtsales.com

Web: shestakovyachtsales.com

Телефоны

Краснодарский край: **+7(918)465-66-44**

США, Майами, Флорида: **+1(954)274-4435**

Время работы

Понедельник – Суббота: **9:00 - 21:00**
EDT

Воскресенье: **Закрито**

Адрес



Harbour Towne Marina, 850 NE 3rd St,
STE 213, Dania, FL 33004