

BODACIOUS — HUNTER



Builder: HUNTER

Year Built: 1994

Model: Cruising Sailboat

Price: PRICE ON APPLICATION

Location: United States

LOA: 40' 2" (12.24m)

Beam: 13' 5" (4.09m)

Min Draft: 4' 10" (1.47m)

Our experienced yacht broker, Andrey Shestakov, will help you choose and buy a yacht that best suits your needs **BODACIOUS — HUNTER** from our catalogue. Presently, at Shestakov Yacht Sales Inc., we have a wide variety of yachts available on our sale's list. We also work in close contact with all the big yacht manufacturers from all over the world.

If you would like to buy a yacht **BODACIOUS — HUNTER** or would like help answering any questions concerning purchasing, selling or chartering a yacht, please call **+1(954)274-4435**

TABLE OF CONTENTS

TABLE OF CONTENTS	2
SPECIFICATIONS	4
Overview	4
Basic Information	4
Dimensions	5
Speed, Capacities and Weight	5
Accommodations	5
Hull and Deck Information	5
Engine Information	5
DETAILED INFORMATION	6
ACCOMMODATIONS	6
GALLEY	8
HEADS	8
WATER SYSTEMS	9
HULL AND DECK	9
SAILS AND RIGGING	10
ENGINE & MACHINERY	11
ELECTRICAL	11
ELECTRONICS	11
OTHER EQUIPMENT	12
EXCLUSIONS	12
Exclusions	12
Disclaimer	12
PHOTOS	13
Another reliable Yanmar 4JH2E	19
1094 hours	19
Experience you can trust	19
40.5 sailplan	20

Hunter Legend 40.5 layout B&W	20
CONTACTS	21
Contact details	21
Telephones	21
Office hours	21
Address	21

SPECIFICATIONS

Overview

Hunter's Legend Series has a great reputation for styling, performance and rugged construction. From the spacious cockpit to her bright open interior, this yacht exemplifies what Hunter Marine is famous for.

Above deck, her powerful rig, swept back spreaders and large mainsail enhance her performance, while the bulb-wing keel keeps her stable and shallow in draft. The fractional headsail, single line reefing and Dutchman sail flaking system make sail handling a breeze.

The cockpit is large and great for entertaining, with lots of seating space, comfortable high backs to the coamings, well-laid-out and organized. Stern rail seats and a large cockpit table add to the environment. The walk-through transom provides easy access for swimming and to your dinghy.

Below decks, the two staterooms and heads make having another couple along fun and provide enough privacy for everyone to feel comfortable. Reverse-cycle air conditioning and heat keeps dockside living comfortable and the huge dinette will seat six to eight people with ease. The galley has great counter space, storage and has top and front-loading refrigerator access and a top-loading freezer.

Design innovation and structural engineering are the cornerstones of the Hunter 40.5. Coupled with an unparalleled list of standard features and an extensive list of optional equipment, they created a comfortable, luxurious and exciting family-oriented cruiser.

"Bodacious" is a one owner boat and has served her owners well. Their plans have changed and now she is offered for sale. If you are looking for a great cruiser that is easy to sail, "Bodacious" is certainly worthy of your personal inspection. Call and make an appointment to come see her now!

Basic Information

Category: Cruising Sailboat

Sub Category: Sloop

Model Year: 1994

Year Built: 1994

Country: United States

Coast Guard #: 1030860

Vessel Top: Bimini Top

Dimensions

LOA: 40' 2" (12.24m)

LWL: 35' 4" (10.77m)

Beam: 13' 5" (4.09m)

Min Draft: 4' 10" (1.47m)

Clearance: 62' 9" (19.13m)

Speed, Capacities and Weight

Displacement: 20000 Pounds

Water Capacity: 105 Gallons

Holding Tank: 35 Gallons

Fuel Capacity: 38 Gallons

Accommodations

Total Cabins: 2

Total Berths: 4

Sleeps: 6

Total Heads: 2

Hull and Deck Information

Hull Material: Fiberglass

Deck Material: Fiberglass Sandwich

Hull Configuration: Monohull

Hull Finish: Stainless Steel

Engine Information

Engines: 1

Manufacturer: Yanmar

Model: 4JH2E

Engine Type: Inboard

Fuel Type: Diesel

DETAILED INFORMATION

ACCOMMODATIONS

Forward stateroom: As you enter the forward stateroom, there is a cedar lined hanging on starboard with a fiddled shelf above it. Forward of that is a changing seat, which has a shelf storage space beneath it. The berth measures 6'4" x 18" x 60" and has four drawers, two cubbies and storage beneath it. There is an overhead hatch, a fan, one overhead and two reading lights. Headroom is 6'.

Forward Head: The ensuite forward head is on port and has 6' headroom. As you enter, the head is to the right and the sculpted Corian sink and countertop are in front of you. The water mixer is a pull-out wand for showering. The two drop-down mirrored door lockers above the counter provide plenty of medicine cabinet and toiletries storage. There is a tip-out trash bin by the head and a curved door locker beneath the sink. There is an overhead light and an overhead hatch for ventilation.

Saloon: The starboard side of the saloon has a 6'6" long settee, with storage beneath it. Immediately behind it is cubbie storage the length of the seat. Above that are a pair of drop-front doored cabinets, with fiddled shelves above them. Between the two is a hullside portlight and a fiddled shelf.

Across on port is a huge U-shaped dinette which can convert easily into a 7'4" x 54" berth by means of a counterweighted lift. There is also a drop-leaf that allows table space for the starboard settee. The table can easily seat six on port and several more with the leaf up. There is machinery located below the seating, with bottle storage at the aft end behind the seat cushions. Cubbie storage lines the hull as well as storage and a port mirroring the other side. Headroom is 6'5".

Nav station: The nav station is located on starboard just aft of the settee. Forward facing, there are seat and back cushions for comfort. The large chart table easily accommodates a chart book and has good storage beneath the lid as well. Outboard of the table there is shelf and cubby storage, with your electrical, map light and electronics equipment above that. Headroom at the nav is 6'5".

Galley: The L-shaped galley is at the base of the companionway on port. Counter space is nice

and with the brightness in the area things are well illuminated. Beginning at the aft is the stove; there is drawer storage beneath it for pots and pans. Continuing to the right and forward there is the refrigerator and freezer. The refrigeration space is generous and has top and front access, which is really convenient. The freezer space is top access; both have gas assist lids. Behind the counter and stove spaces along the hull there are fiberglass storage bins. Overhead storage along the hull consists of a pair of lockers with drop-front doors; a fiddled shelf is between them with a Corian spice rack and a fixed port in the hullside. At the forward end the overhead wraps around back toward the sinks and is an open cubby space. Above all of the cabinets is fiddled shelf space.

The counter wraps back around toward centerline, with deep double stainless steel sinks, followed by countertop lift-ups for access to the waste bin and also a reversible cutting board surface. Beneath the sink there is a pair of double doors, with shelf storage inside. To the right of that are four drawers. Additionally, there is double-door shelf storage on the end cap of the cabinetry that can be shared with the nav station if desired.

Above the sink counter there is a teak overhead dish organizer. It is fiddled, has organizer pegs to keep things in place and has a light for over the sink and two stainless steel grab bars for safety while underway.

The entire galley/saloon/nav space is bright, inviting and spacious feeling to it. For lighting and ventilation, there are two hullside fixed ports, five fixed lights, two opening ports and four hatches. Additionally, there are five overhead lights and four reading lights.

Aft Head: Entry to the aft head is on starboard from the saloon or from the aft master stateroom. The space is a unitized construction of fiberglass, making for easy maintenance. There is a sculpted Corian countertop with an integrally molded sink and a storage locker beneath it. Behind the sink is a molded bin for toiletries storage. Behind the head seat is a tip-out trash bin. Mirrored drop-front doors along the hull provide plenty of storage overhead. With 6'7" of headroom, one fixed port and two opening ports the space feels bright and spacious.

Aft stateroom: The aft owner's stateroom can be entered from the galley on port or through the dual-entry head on starboard. Entry height is 6'7", while the walk-thru (as with any aft cockpit master stateroom) is pretty good at 5'3". As you enter from the galley there is a tall double door locker; inside one finds shelves on one side and a cedar-lined hanging locker on the other. Above is a fiddled shelf space.

The athwart oriented berth is 78" x 64" and has two cedar lined drawers beneath it as well as bulk storage under it. There is a padded headboard on the port side, with lots of storage space behind it. At the foot of the bed there are shelves with fiddles the full width of the bed, providing lots of storage there. There is another double doored locker there, with half cedar lined and half wet locker hanging space. A fiddled shelf space is above that. At the forward end is the aft access to the engine, with a Corian shelf and mirror above. The entire cabin is well ventilated and bright, with two fixed hullside ports each at the foot and head of the bed, two more around the cockpit well, four opening ports and two overhead hatches. Additionally, there are two overhead lights, two reading lights and several cabin fans.

- Teak cabinetry and bulkheads throughout
- Oak hullside staving in the saloon
- Teak and holly cabin sole
- Screens for ports and hatches
- Accordion shades

GALLEY

- Teak fiddled Corian countertops
- Countertop reversible cutting board
- Top access trash bin
- Deep double stainless steel sinks
- Gooseneck hot and cold water mixer
- Hillerange 3-burner CNG stove with oven and broiler
- Stainless steel stove safety bar
- Top access freezer
- Top and front access refrigerator
- Gas assist top access lids
- Dual Adler-Barbour 12v. Power Plate refrigeration and freezer units
- Overhead fiddled dish organizer shelf with organizer pegs and grab bars
- Self-draining wet space beneath companionway steps

HEADS

Forward head

- Molded Corian countertops with integral sink
- Hot and cold water mixer with pull-out shower wand
- Electric shower sump pump

- Jabsco manual head
- Holding tank with deck pump out
- Macerator pump for overboard discharge where permitted
- Tip-out trash bin
-

Aft head

- Molded Corian countertops with integral sink
- Stainless steel hot and cold water mixer
- Separate hot and cold pull-out shower wand
- Electric shower sump pump
- Corian shelf and bottle storage by shower wand
- Shower curtain track
- Groco manual head
- Holding tank with deck pump out
- Jabsco macerator pump for overboard discharge where permitted
- Tip-out trash bin

35 gallon total holding tank capacity between both heads

WATER SYSTEMS

- Seaward six-gallon hot water heater
- 105 gallons of fresh water in three tanks
- Shurflo 2.8 gpm fresh water pump
- Hot and cold water cockpit shower
- Shurflo Blaster anchor washdown
- Rule 2000 electric bilge pump
- Manual bilge pump at helm

HULL AND DECK

- Lead bulb-wing keel
- Balsa coring in hull sides for strength and a quieter ride
- One-piece fiberglass grid system
- Spade rudder
- Two coats of Interprotect 2000 barrier coat ('18)
- Two coats of Trinidad Pro bottom paint ('18)
- Two-tone molded in non-skid deck
- Stainless steel bow and stern pulpits

- Bow pulpit seat
- Stern rail seats
- Offset double bow roller
- Anchor well and locker with below deck windlass
- Fluke anchor with 5/16" chain
- Maxwell 800 electric windlass
- Up and down foot switches
- Spare 5/16" chain and 5/8" nylon rode
- Slotted aluminum toe rail
- Double vinyl coated lifelines
- Port and starboard boarding gates
- Stainless steel handrails
- Fiberglass cockpit table with drop-leaves and cup holders
- Walk-thru transom
- Two large transom lockers
- Swim platform
- Stainless steel swim ladder
- Eight fixed lights in housetop
- Six fixed lights in hullsides
- Eight opening ports
- Nine opening hatches

SAILS AND RIGGING

- Harken Cruising 2 Series roller furler mounted below deck
- Deck-stepped B & R rig double spreader aluminum mast
- Mast steps (3) for easy access to mainsail headboard
- 1x19 stainless steel wire standing rigging
- Inboard mounted shrouds
- Split backstay
- Inboard mounted Genoa tracks & cars for higher sheeting angles
- Schaefer adjustable mainsheet traveler with mid-boom sheeting
- Mechanical boom vang
- Topping lift
- Lewmar #48 two-speed self-tailing chromed primary winches (2)
- Lewmar #44 two-speed self-tailing chromed control winch on housetop
- Lewmar #30 two-speed self-tailing chromed control winch on housetop
- Garhauer line clutches (8)
- Line organizers (8)
- All lines are led aft to the cockpit for easy handling
- Spinnaker halyard
- Halyards replaced ('08)
- Dutchman sail flaking system

- UK 130% Genoa
- UK Full battened main sail with jiffy reefing
- Sails serviced ('17)
- I: 50'4"
- J: 13'3"
- P: 52'0"
- E: 16'5"

ENGINE & MACHINERY

- Yanmar 4JH2E 50HP engine with 1094 hours
- 38 gallon fuel capacity
- Fuel polished ('18)
- Cutlass bearing replaced ('18)
- 3-blade fixed propeller
- Edson fiberglass steering pedestal
- Single lever engine control
- Stainless steel destroyer wheel
- Wheel brake
- Ritchie compass
- Mermaid 16,000 BTU reverse cycle heat and air conditioning

ELECTRICAL

- 30A shore power connection w/cord
- Spare 30A shore power cord
- 30A>50A adaptor
- 15A-30A adaptors
- 110V electrical panel w/reverse polarity indicator
- 110V receptacles w/GFCI protection throughout
- Xantrex TruCharge 2 battery charger
- 12v electrical panel with volt and amp meters
- Solar panel for trickle charging batteries
- Perko battery selector switches for house and starting banks
- Best 31DC Group 31 house batteries (3)
- Best 31DC Group 31 starting battery
- Night time convenience entry light switch by companionway
- 12v plugs at nav and cockpit table

ELECTRONICS

- Garmin 3210 10" chartplotter
- Raymarine ST6001 below deck autopilot
- Raymarine ST60+ wind ('07)
- Autohelm ST60 speed
- Autohelm ST60 depth
- Autohelm multi display at nav
- B&G Network VHF radio at helm
- ICOM M-3A handheld VHF
- Sharp 25" LCD flat screen TV/DVD player ('07)
- Glomex masthead TV antenna and control ('07)
- Cable TV shore connection
- Sony CDX-M10 CD/MP3 stereo receiver
- Sony cockpit speakers

OTHER EQUIPMENT

- Lifesling
- Clinometer
- Zodiac 8'6" roll-up dinghy ('02)
- Johnson 2.0 outboard motor
- Mainsail cover
- Pedestal and cockpit table cover
- Sport-A-Seat adjustable cockpit seats (2)
- Starboard gimbaling cup holders

EXCLUSIONS

Owner's personal effects and any items not specifically described in this listing

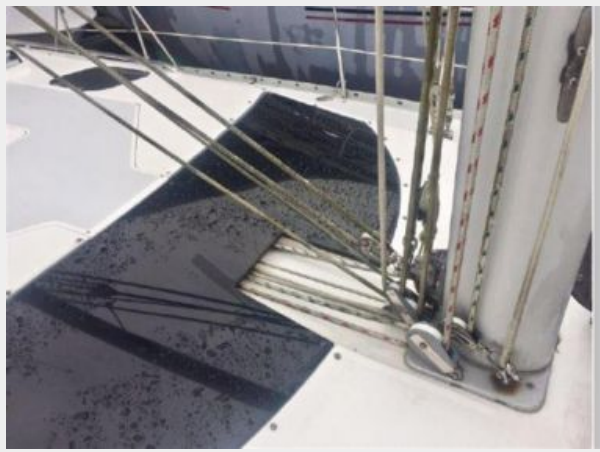
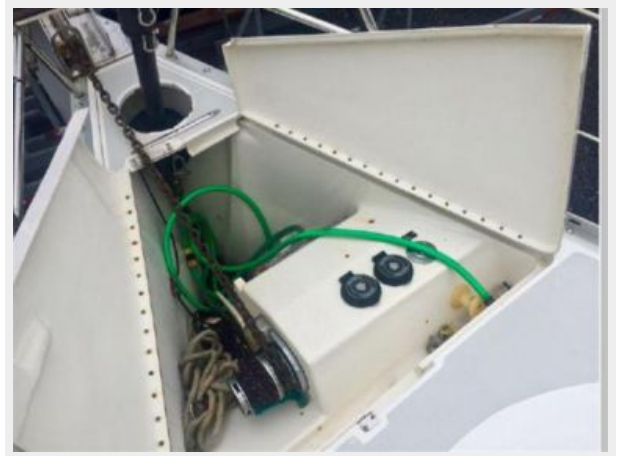
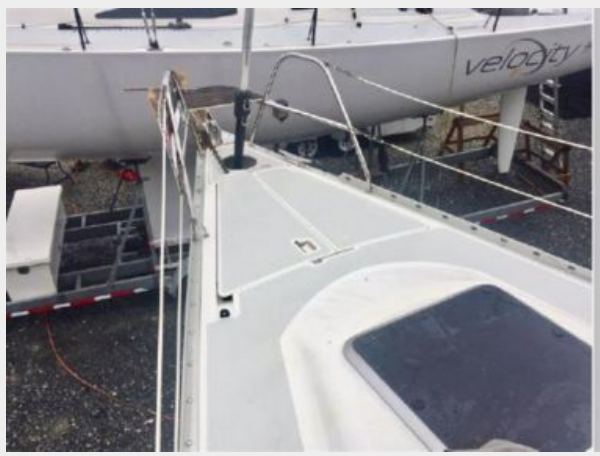
Exclusions

Owner's personal belongings.

Disclaimer

The Company offers the details of this vessel or yacht in good faith but cannot guarantee or warrant the accuracy of this information nor warrant the condition of the vessel. A buyer should instruct his representatives, agents, or his surveyors, to investigate such details as the buyer desires validated. This vessel or yacht is offered subject to prior sale, price change, or withdrawal without notice.

PHOTOS

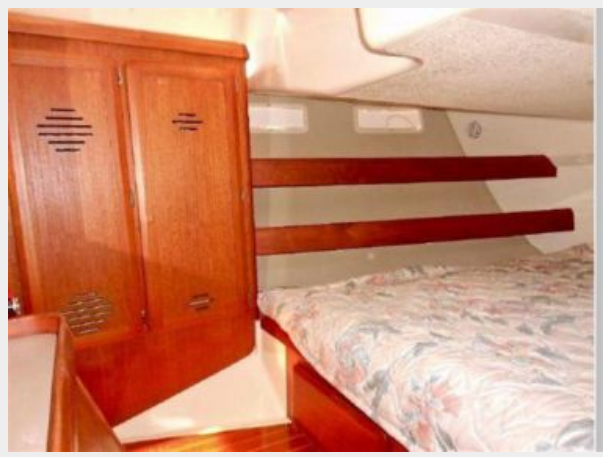












Another reliable Yanmar 4JH2E



1094 hours

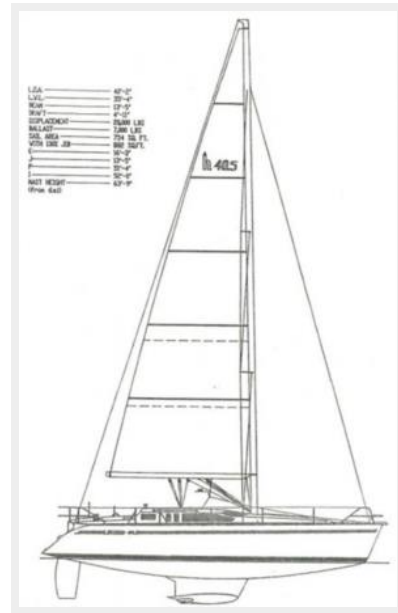
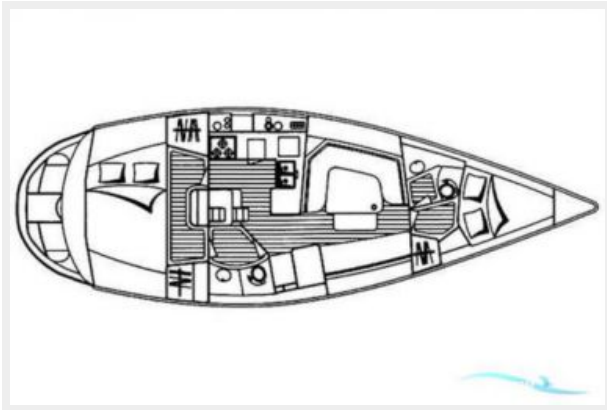


Experience you can trust



40.5 sailplan

Hunter Legend 40.5 layout B&W



CONTACTS

Andrey Shestakov, leading yacht broker of the sales department of Shestakov Yacht Sales Inc. Shestakov Yacht Sales Inc., the official representative of the Miami/Fort Lauderdale FL headquarters.

Contact details

Email: andrey@shestakovyachtsales.com

Web: shestakovyachtsales.com/en/

Telephones

USA: +1(954)274-4435

Office hours

Monday – Saturday: **9:00 - 21:00** EDT

Sunday: **closed**

Address



Harbour Towne Marina, 850 NE 3rd St,
STE 213, Dania, FL 33004