

## COOL CHANGE — HUNTER MARINE



**Судостроитель:** HUNTER MARINE

**Год постройки:** 2010

**Модель:** Крейсерская яхта

**Цена:** **ЦЕНА ЯХТЫ ПО ЗАПРОСУ**

**Местонахождение:** United States

**Длина общая:** 39' 0" (11.89m)

**Ширина:** 12' 11" (3.94m)

**Мин. осадка:** 5' 0" (1.52m)

**Макс. осадка:** 5' 0" (1.52m)

Купить **COOL CHANGE — HUNTER MARINE** а также выбрать подходящую вам яхту из нашего каталога яхт вам поможет опытный яхтенный брокер Андрей Шестаков. На сегодняшний день компания Shestakov Yacht Sales Inc. имеет большое количество яхт в собственном списке продаж, а также тесно сотрудничает со всеми крупными яхтенными производителями по всему миру.

Для того чтобы купить яхту **COOL CHANGE — HUNTER MARINE** а также проконсультироваться по любому вопросу связанному с покупкой, продажей, чартером яхт позвоните по телефону **+7(918)465-66-44**.

# ОГЛАВЛЕНИЕ

ОГЛАВЛЕНИЕ	2
ХАРАКТЕРИСТИКИ	5
Обзор	5
Основная информация	5
Размеры	6
Скорость, вместимость и масса	6
Размещение	6
Корпус и палуба	6
Информация о двигателе	6
ПОДРОБНОЕ ОПИСАНИЕ	7
Features	7
Исключения	12
Отказ от ответственности	12
ФОТОГРАФИИ	13
A great cockpit for entertaining or just relaxing	13
The American cherry interior looks great	13
Looks pretty good, doesn't it?	13
What a fantastic galley!	13
Looking up her side deck	14
Ground tackle, with the windlass out of the way for a cleaner deck	14
The coachroof is clean and uncluttered. Note the inboard shrouds for higher sheeting angles	14
Looking aft. All lines are led aft, in-mast furling makes it easy. Note the double saloon hatches.	15
Rigid vang and in-mast furling	15
Looking into the cockpit. Cockpit table is large and has an icebox.	15
Well protected from the sun	15
Swim platform and ladder. Note the grab rails on either side.	16
Transom doors to the swim platform	16
A hatch for ventilation to the master stateroom.	16

Control lines are organized and line tail cubbies keep the spaghetti out of the way.	17
Looking into the saloon. Dinette converts to make a 7' long berth	17
Port side settee and nav	17
Beautiful cabin soles	18
Lots of space for guests!	18
The forward stateroom berth, with lots of storage beneath it	18
Looking toward the forward stateroom	18
One of the forward stateroom lockers	19
Cedar lined hanging locker	19
Looking aft from the forward stateroom on port	19
Looking aft	19
A different angle of the galley and entry into the master stateroom	20
Looking aft on starboard	20
OK- I admit it- I have galley envy...	20
Another view of the galley.	20
At the foot of the master stateroom is lots of cubby, drawer and locker space	20
The head of the master berth, with a changing seat, hatch and opening port.	20
The nav station is clean and functional	21
More locker storage	21
Electrical panel is tidy and hinged for easy service	21
More electrical controls behind the panel under the seat	21
Looking into the head	22
Separate shower and head area	22
Height-adjustable shower wand	22
Bi-fold privacy door	22
A view into the bilge (left) and battery compartment	23
Another reliable Yanmar engine	23
Hunter 39 two cabin layout	23
<b>КОНТАКТЫ</b>	<b>24</b>

---

Контактная информация	24
Телефоны	24
Время работы	24
Адрес	24

# ХАРАКТЕРИСТИКИ

## Обзор

### LOWEST PRICED HUNTER 39 IN THE USA!

The Hunter 39 was designed as the successor to the 38, Hunter's breakthrough model that combined comfort, outstanding performance and easy handling. This new boat retains many of the positive characteristics of the 38, but makes major improvements in several key areas. Almost two feet longer, the deck profile, flush mounted hatches, ports and windows and hull shape are sleek and modern, and the new Glenn Henderson extended hull improves sailing performance. The U-shaped cockpit lounge seats the entire crew in comfort around a large drop-leaf table. The cockpit features twin wheels for the ultimate in comfort, visibility and control, stern rail seating and transom access from the roomy cockpit is wide and safe. All lines are led aft to the safety of the cockpit, the jib and double-ended mainsheet are all easily trimmed from the helm (great for single handing!) and the in-mast furling makes the sail handling easy.

Below, the Hunter 39 retains the popular two stateroom/one head layout, but several key enhancements improve function and appearance. In the galley, faux granite countertops give a luxurious custom feel. Handholds and storage are plentiful throughout the boat. Their extensive use of rich cherry woods has a luxurious feel and the beveled hardwood sole lends an opulent flair. The new nav station is roomier and larger ports in the common areas let in more natural light.

Our offering, 'COOL CHANGE', is a very nice example of these great boats. First introduced in 2009, 'COOL CHANGE' is a 2010 and hull number 121- a good testament to the popularity of these boats, given a down economy. Her owners have enjoyed her immensely, but work commitments are causing a hiatus from sailing for a couple of years.

Call and make an appointment to get on board today- she is certainly worthy of your consideration!

## Основная информация

**Тип судна:** Крейсерская яхта

**Подкатегория:** Sloop

**Модельный год:** 2010

**Год постройки:** 2010

**Страна:** United States

**Регистрационный номер:** MD 4418 BX

**Номер регистрации в береговой охране:** 1225430

**Верх:** Bimini Top

## Размеры

**Длина общая:** 39' 0" (11.89m)

**Длина по ватерлинии:** 34' 8" (10.57m)

**Длина палубы:** 38' 9" (11.81m)

**Ширина:** 12' 11" (3.94m)

**Мин. осадка:** 5' 0" (1.52m)

**Макс. осадка:** 5' 0" (1.52m)

**Трапы:** 61' 9" (18.82m)

## Скорость, вместимость и масса

**Водоизмещение:** 18501 Pounds

**Вместимость воды:** 75 Gallons

**Вместимость сточного бака:** 25 Gallons

**Объем топливного бака:** 38 Gallons

## Размещение

**Всего кают:** 2

**Всего коек:** 3

**Спальные места:** 6

**Всего ком. состава:** 1

## Корпус и палуба

**Материал корпуса:** Fiberglass

**Материал палубы:** Fiberglass Sandwich

**Комплектация корпуса:** Monohull

**Цвет корпуса:** White

**Отделка корпуса:** Plastic

## Информация о двигателе

**Двигатели:** 1

**Производитель:** Yanmar

**Модель:** 3JH4E

**Тип двигателя:** Inboard

**Тип топлива:** Diesel

# ПОДРОБНОЕ ОПИСАНИЕ

## Features

### Accommodations

**Forward stateroom:** The forward stateroom features a generous 7' long berth. There are two locker doors beneath the berth, with lots of space and shelf in the back upper area. The hullsides are padded for sleeping comfort and have fiddled shelves along the length of the berth. There is a cedar lined hanging locker on starboard and another locker on port with shelves. Both lockers have fiddled shelves above them. Headroom in this space is 6' 1"; there is a large overhead hatch, two overhead lights and two reading lights.

**Saloon:** Aft of the forward stateroom, there is a 6' long straight settee on port and a 7' long U-shaped settee on starboard. There is storage below and behind both settees. Above and behind the port settee the hull is a single raised panel locker forward, cherry staving along the hull with a fixed light in the hullside and a fiddled shelf above. On starboard there is the same configuration, but with two lockers.

The large, bullnose-edged dinette table has a drop leaf on the port side for additional dining space when needed. However, seating space is generous without it. The table can be lowered, and with the insert cushion, creates a comfortable 7' x 57" x 43" double berth.

The entire space feels luxurious and bright with lots of natural light, in addition to the two overhead hatches, reading and overhead lighting throughout.

**Nav station:** The nav station is forward facing and on port. The curved seat is designed to keep you comfortable even when heeled and has storage beneath it. The chart table has storage inside it and can also double as an end table for the port settee. There is a storage locker along the hull next to the seat and the neatly organized electrical panel is hinged for easy service.

**Galley:** The L-shaped galley is located on starboard at the base of the companionway. The combination of the black Corian® countertops and backsplash, polished stainless steel sinks, grab bars and accents, glass front locker doors and cherry finishes makes this one very elegant looking galley.

The thick bullnose counter running perpendicular to the hull separates the dinette and galley, with a backsplash to keep the galley things in the galley. A double polished sink has Corian® sink covers to make this all counter space and tidier when not in use. To the right of the sinks is a trash bin, also with a Corian® lid to keep things looking tidy. Beneath the counter is an upright refrigerator/freezer on the left and a large cabinet space directly beneath the sink.

Continuing around and along the hull, there is a wire rack pull out storage unit to the left of the stove, drop front storage for pots and pans beneath the stove and three drawers to the right of the stove. Above the counter along the hull, there are two sets of glass front doors. The forward-

most encloses a dish drying rack with a light, drain and fan. The next set has open shelf space inside. Aft of that is a built-in microwave. There are an overhead hatch and opening port in the galley to help keep things cool.

**Aft stateroom:** The master stateroom aft has dual entry- from the galley or head. Headroom at the entry spaces is 6'3". The 7'8" x 58" wide berth is oriented athwart ship and has storage beneath the berth. At the foot of the bed on port, there is a row of open storage cubbies with a large fiddled shelf the width of the berth, a pair of drawers and a cedar lined locker with shelving inside to the right of that.

At the head of the bed there is a changing seat with storage below it, an opening port in the hull and an overhead hatch, providing good ventilation and a way to look at the stars. There is a cedar lined hanging locker with a fiddled shelf above it by the entry from the galley. There are overhead lights at either entry to the cabin and a pair of reading lights at the head of the bed.

**Head:** There is an entry into the head from the saloon as well as the master stateroom aft. Upon entering from the saloon, the bullnose Corian countertop has an oval polished stainless steel sink. Below the sink is a large locker with a molded fiberglass door. Above the counter is a nice sized medicine cabinet that has a drop-front mirror door.

To the left is the entry into the separate shower/head area. A frosted bi-fold door provides privacy and keeps the sink area dry. There is a drop-down teak slatted shower seat if you choose to use it and a slide-bar mounted shower wand. Back of this space is the door to the master stateroom. The 6'5" headroom accommodates most folks. There is an overhead hatch, opening port and overhead lighting in these areas.

- American cherry finish
- Solid wood cabin sole
- Cherry staving accents on hull sides
- Push button positive latching knobs on lockers
- Accord blinds
- Ocean Air hatch shade/screens
- All fiddles have integral handholds
- Continuous handholds along the hull in the saloon and galley

## Galley

- Corian® bullnose countertops and backsplash
- Stainless steel grab rails
- Double polished stainless steel sink w/Corian® covers
- Single lever H/C water mixer with a pull-out sprayer ('17)
- Upright 12v. refrigerator/freezer w/stainless steel front
- Force 10 two burner LPG stove with oven, broiler and safety bar
- 10# aluminum LPG tank
- Microwave oven



- Dish dryer rack with light and fan
- Hunter Marine dishes

## Head

- Corian® bullnose countertop
- Oval polished stainless steel sink
- Single lever stainless steel H/C water mixer
- Corian® sole in sink area
- AC/heat vent
- Tip-out mirrored medicine cabinet
- Separate toilet/shower stall area w/frosted bi-fold privacy door
- Single lever H/C water mixer in the shower with the wand on the slide bar
- Wire shower caddy
- Teak shower seat
- Teak shower grate
- Electric shower sump
- Jabsco manual head
- Y-valve for overboard discharge
- Jabsco macerator pump

## Water Systems

- Hot and cold pressure water
- Force ten stainless steel 5-gallon water heater
- Jabsco fresh water pump
- H/C swim platform shower
- City water hookup
- Rule 1000 GPH electric bilge pump
- High water alarm with Rule 4000 GPH electric bilge pump
- Whale manual bilge pump

## Hull and Deck

- Offset double anchor roller
- Delta Quickset anchor w/ 3/8" chain and 58" nylon rode
- Maxwell vertical electric windlass with up and down foot switches
- FRP and balsa core above the waterline for strength and insulation
- HTK Kevlar® hull reinforcement
- MaxGuard® gelcoat for UV protection
- Full wrap-around rub rail w/stainless steel insert
- Structural grid hull reinforcement
- Balanced spade rudder
- Six stainless steel mooring cleats

- Stainless steel grab rails
- Double vinyl lifelines with port & starboard gates
- Swim platform w/stainless steel ladder
- Walk-thru transom with double doors
- Stainless steel and teak stern rail seats with cup holder
- Bowmar hatches (6)
- Dorade Vents (2)
- Stainless steel cockpit traveler arch w/mainsheet
- Dodger with side grab bars (new Isinglass and serviced '18)
- Bimini with two windows and connector (serviced '18)
- Halyard tail stowage wells
- Drop leaf cockpit table with cup holder and ice bin

## Sails and Rigging

- Harken roller furler ('17)
- Selden GX Gennaker furler
- Deck stepper Selden B&R rig double spreader mast
- Selden rigid vang
- Arch mounted mainsheet traveler
- Inboard jib tracks for higher sheeting angles
- Selden 6' cruising spinnaker sprit
- All lines are led aft to the cockpit
- Spinnaker halyard
- Mainsail furling & outhaul lines ('17)
- Lewmar 2 speed #46 self-tailing primary winches
- Lewmar 2 speed #40 self-tailing housetop winches (2)
- Spinlock mainsheet clutch on the arch
- Spinlock line clutches on housetop (8)
- Doyle 110% jib
- In-mast Doyle furling mainsail
- Doyle 0.75 oz. Gennaker

## Engine and Machinery

As with most Yanmar instrument panels, the hour gauge stopped working. Given the known use we think it is around 325-350 hours. It was used for locally five seasons by the first owners and one season by the current, with under 20 hours on her in 2017.

- Yanmar 3JH4E 40HP diesel engine S/N E09237
- Racor 200R fuel filter
- Three blade propeller
- Lewmar single lever throttle control
- Dual Edson® steering pedestals

- Leather wrapped stainless steel wheels
- Ritchie compass
- Electric fuel gauge
- Oil X-Change-R oil change system
- Marvair 16,000 BTU reverse cycle heat/air conditioning

## Electrical

- Marinco 30A shore power connections
- 30A 50' shore power cord
- Marinco TV/phone connection
- Galvanic isolator
- 120V AC electrical panel w/digital monitor and parallel switch
- 120V receptacles w/GFCI protection throughout
- 12v DC electrical panel w/digital monitor
- Pro Mariner Pro Tech 1240i+ four stage programmable 40A battery charger
- Group 27 AGM starting battery ('17)
- Two 4D AGM house batteries ('17)
- 12v DC receptacles
- Blue Sea Systems battery combiner
- Smoke detector
- Carbon monoxide detectors

## Electronics

- Raymarine C90W color chart plotter in Edson nav pod
- Raymarine X-30 Smart Pilot with below deck ram
- Raymarine ST7002 autopilot control head
- Raymarine ST60+ wind
- Raymarine ST60+ speed and log
- Raymarine ST60+ depth
- ICOM M-422 VHF w/DSC
- ICOM Command Mic II RAM mic at helm
- Standard Horizon HX270S submersible hand-held VHF
- 22" LCD flat screen HD television
- Bose 3-2-1 home entertainment system
- Bose Acoustimass bass module
- Bose speakers in saloon
- Sinergex S600 pure sine wave inverter for Bose system
- Fusion MS-CD500 stereo in the cockpit
- Arch mounted cockpit speakers

## Other Equipment

- Fenders
- Dock lines
- Boat hook
- PFD's
- Emergency tiller
- Shark hand held vacuum cleaner

## Exclusions

Owner's personal effects and any items not specifically described in this listing

## Исключения

---

При продаже яхты исключаются личные вещи владельца.

## Отказ от ответственности

---

Компания предоставляет описание судна или яхты добросовестно, но не может гарантировать точность этой информации, а также не ручается за техническое состояние. Покупатель должен проинструктировать своих агентов или оценщиков исследовать представленную информацию более подробно, по собственному желанию. Продажа судна или яхты, изменение цены или снятие с продажи будет происходить без предварительного уведомления.

## ФОТОГРАФИИ

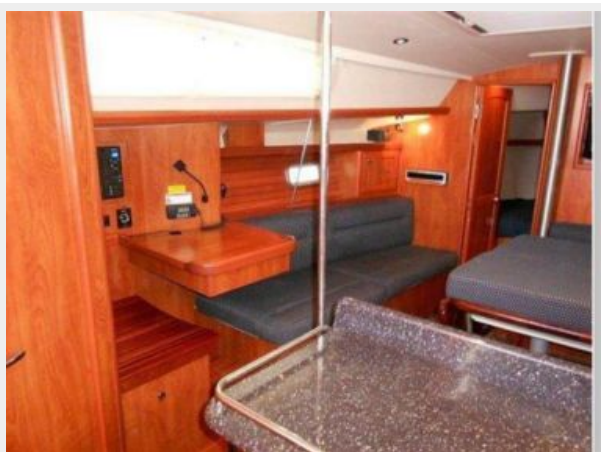
**A great cockpit for entertaining or just relaxing**



**The American cherry interior looks great**



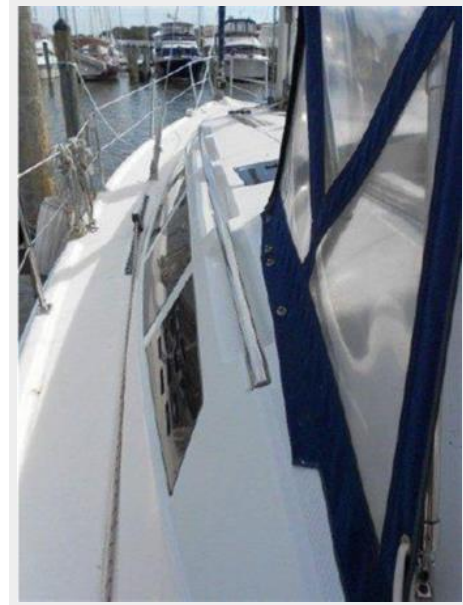
**Looks pretty good, doesn't it?**



**What a fantastic galley!**



**Looking up her side deck**



**The coachroof is clean and uncluttered.  
Note the inboard shrouds for higher  
sheeting angles**



**Ground tackle, with the windlass out of the  
way for a cleaner deck**



**Looking aft. All lines are led aft, in-mast furling makes it easy. Note the double saloon hatches.**



**Rigid vang and in-mast furling**



**Well protected from the sun**



**Looking into the cockpit. Cockpit table is large and has an icebox.**



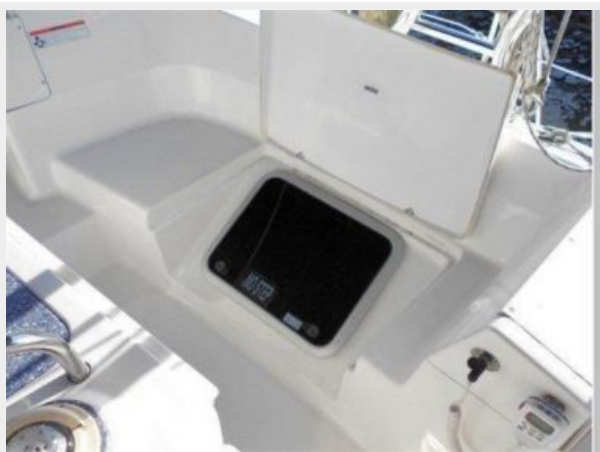
**Transom doors to the swim platform**



**Swim platform and ladder. Note the grab rails on either side.**



**A hatch for ventilation to the master stateroom.**





**Control lines are organized and line tail cubbies keep the spaghetti out of the way.**



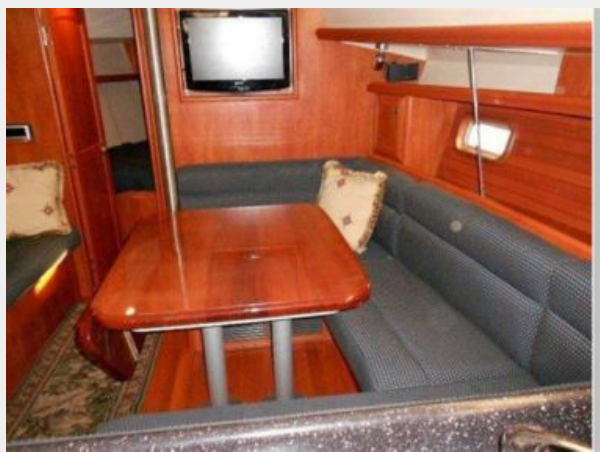
**Looking into the saloon. Dinette converts to make a 7' long berth**



**Port side settee and nav**



**Lots of space for guests!**



**Beautiful cabin soles**



**The forward stateroom berth, with lots of storage beneath it**

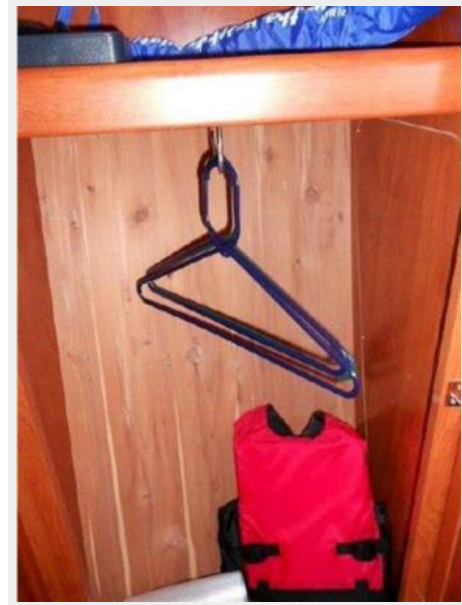
**Looking toward the forward stateroom**



One of the forward stateroom lockers



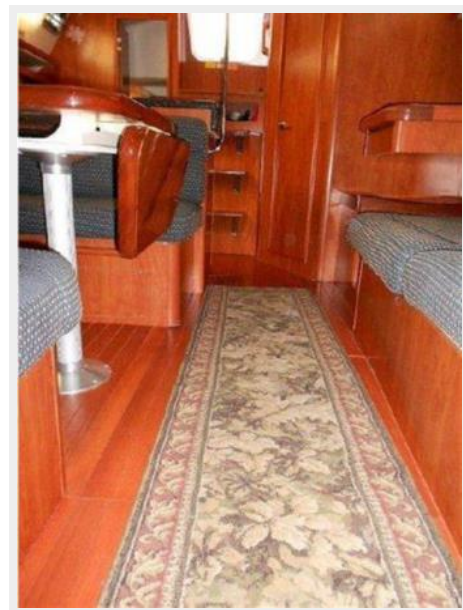
Cedar lined hanging locker



Looking aft from the forward stateroom on port



Looking aft



**Looking aft on starboard**



**A different angle of the galley and entry into the master stateroom**



**OK- I admit it- I have galley envy...**



**Another view of the galley.**



**At the foot of the master stateroom is lots of cubby, drawer and locker space**



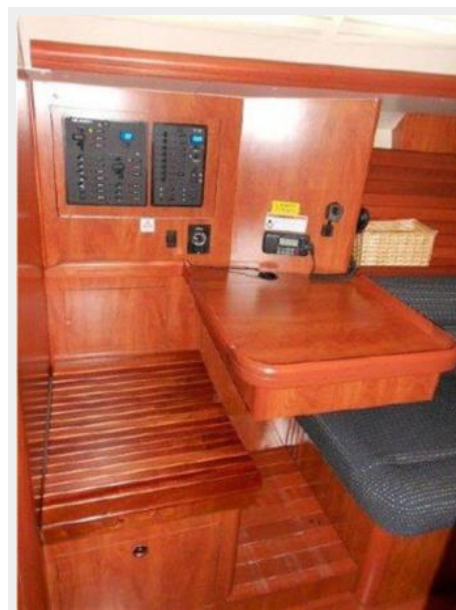
**The head of the master berth, with a changing seat, hatch and opening port.**



**More locker storage**



**The nav station is clean and functional**



**Electrical panel is tidy and hinged for easy service**



**More electrical controls behind the panel under the seat**



**Looking into the head**



**Separate shower and head area**



**Height-adjustable shower wand**



**Bi-fold privacy door**



Another reliable Yanmar engine



A view into the bilge (left) and battery compartment



Hunter 39 two cabin layout



# КОНТАКТЫ

---

Андрей Шестаков (Andrey Shestakov) – ведущий яхтенный брокер отдела продаж яхт и судов компании Shestakov Yacht Sales Inc. Официальный представитель Shestakov Yacht Sales Inc. для русскоговорящих клиентов в центральном офисе компании в Майами/Форт Лодердейл/Флорида/США.

## Контактная информация

---

Email: [andrey@shestakovyachtsales.com](mailto:andrey@shestakovyachtsales.com)

Web: [shestakovyachtsales.com](http://shestakovyachtsales.com)

## Телефоны

---

Краснодарский край: **+7(918)465-66-44**

США, Майами, Флорида: **+1(954)274-4435**

## Время работы

---

Понедельник – Суббота: **9:00 - 21:00**  
EDT

Воскресенье: **Закрыто**

## Адрес

---



Harbour Towne Marina, 850 NE 3rd St,  
STE 213, Dania, FL 33004