

## SLIPSTREAM — CATALINA



**Builder:** CATALINA

**Year Built:** 2013

**Model:** Cruising Sailboat

**Price:** PRICE ON APPLICATION

**Location:** United States

**LOA:** 38' 0" (11.58m)

**Beam:** 13' 1" (3.99m)

**Min Draft:** 4' 8" (1.42m)

**Max Draft:** 4' 8" (1.42m)

**Cruise Speed:** 6 Kts. (7 MPH)

**Max Speed:** 8 Kts. (9 MPH)

Our experienced yacht broker, Andrey Shestakov, will help you choose and buy a yacht that best suits your needs **Slipstream — CATALINA** from our catalogue. Presently, at Shestakov Yacht Sales Inc., we have a wide variety of yachts available on our sale's list. We also work in close contact with all the big yacht manufacturers from all over the world.

If you would like to buy a yacht **Slipstream — CATALINA** or would like help answering any questions concerning purchasing, selling or chartering a yacht, please call **+1(954)274-4435**

---

# TABLE OF CONTENTS

---

TABLE OF CONTENTS	2
SPECIFICATIONS	3
Overview	3
Basic Information	3
Dimensions	3
Speed, Capacities and Weight	4
Accommodations	4
Hull and Deck Information	4
Engine Information	4
DETAILED INFORMATION	5
Features	5
Exclusions	10
Disclaimer	10
PHOTOS	11
CONTACTS	19
Contact details	19
Telephones	19
Office hours	19
Address	19

---

# SPECIFICATIONS

---

## Overview

---

It's not often that we brokers come across such an impeccably maintained yacht as this 2013 Catalina 385, SLIPSTREAM. **She truly looks and feels like she just came off of the line at the factory.** She has been exquisitely maintained inside and out. Once you step on board, you'll appreciate how well cared for she really is.

- 2-cabin, 1-head layout
- In-mast furling mainsail
- Electric halyard winch
- 2-Zone Reverse cycle marine air conditioning and heat
- Raymarine e95 HybridTouch chart plotter, i70 data and autopilot
- 40hp Yanmar with 393 hours
- Flat screen TV, Satellite radio, and Bose sound system

## Basic Information

---

**Category:** Cruising Sailboat

**Model Year:** 2013

**Year Built:** 2013

**Country:** United States

## Dimensions

---

**LOA:** 38' 0" (11.58m)

**LWL:** 34' 4" (10.46m)

**LOD:** 38' 2" (11.63m)

**Beam:** 13' 1" (3.99m)

**Min Draft:** 4' 8" (1.42m)

**Max Draft:** 4' 8" (1.42m)

---

## Speed, Capacities and Weight

---

**Cruise Speed:** 6 Kts. (7 MPH)

**Cruise Speed RPM:** 2500 Kts.

**Max Speed:** 8 Kts. (9 MPH)

**Displacement:** 19000 Pounds

**Water Capacity:** 100 Gallons

**Holding Tank:** 31 Gallons

**Fuel Capacity:** 40 Gallons

---

## Accommodations

---

**Total Cabins:** 2

**Total Berths:** 2

**Total Heads:** 1

---

## Hull and Deck Information

---

**Hull Material:** Fiberglass

**Hull Configuration:** Monohull

---

## Engine Information

---

**Engines:** 1

**Manufacturer:** Yanmar

**Model:** 3JH4E

**Engine Type:** Inboard

**Fuel Type:** Diesel

---

# DETAILED INFORMATION

---

## Features

---

### INTRODUCTION

It's not often that we brokers come across such an impeccably maintained yacht as this 2013 Catalina 385, SLIPSTREAM. She truly looks and feels like she just came off of the line at the factory. She has been exquisitely maintained inside and out. Once you step on board, you'll appreciate how well cared for she really is.

- 2-cabin, 1-head layout
- In-mast furling mainsail
- Electric halyard winch
- 2-Zone Reverse cycle marine air conditioning and heat
- Raymarine e95 HybridTouch chart plotter, i70 data and autopilot
- 40hp Yanmar with 372 hours
- Flat screen TV, Satellite radio, and Bose sound system

### COCKPIT

Face the facts...The cockpit is the lifeblood of any fine cruising yacht. This is where you spend 90% of your time onboard. You need comfort, convenience, and easy access to all of the yacht's systems for smooth and safe sailing. Catalina has mastered the sailing cockpit. With long cockpit seating, a folding wheel, and a beamy stern, the Catalina 385 cockpit offers the perfect space for comfortable cruising and entertaining. The seats are wide and long enough to lay down and relax or to comfortably seat 6 for an evening meal. Everything you need to sail the boat, single-handed or with a crew, is right at your fingertips without leaving the cockpit.

- Raymarine e95 HybridTouch Chart Plotter
- Lewmar folding wheel, great for easy navigation around the cockpit
- Plush fabric covered foam cockpit cushions
- Electric halyard winch, Lewmar ST40
- Raymarine autopilot control to starboard
- Raymarine i70 series tri-data to starboard, (2) more tridatas in port coaming
- Yanmar engine panel at Edson pedestal with 372 hours
- Standard Horizon Ram 3 mic at Edson pedestal
- All running rigging leads aft to cockpit
- Lewmar ST40 cabintop winches
- Lewmar ST44 primary winches
- Bose speakers mounted below stern rail seats
- Varnished teak folding cockpit table with centerline storage and cup holders
- Dodger with Makrolon easy-to-see window panels, custom canvas covers
- Bimini and connector piece

- Easy walk-through stern access to sugar-scoop swim platform

## MAIN SALON

Below decks, you'll find a warm, rich and inviting interior space for lounging at the end of a cruising day. A gourmet galley lies to the port, nav station to starboard, and a spacious main salon that takes advantage of SLIPSTREAM's xx beam. There is a comfortable sitting area to starboard with a beautifully varnished coffee table between two individual seats. The table also can be moved down and two cushion inserts turn the starboard settee into one long seating area. On the port side, a large L-shaped settee wraps around a folding table for meals down below.

- Reverse-cycle air conditioning and heat
- Large-L-shaped settee to port
- Two individual seats to starboard convert to long settee
- Day table to starboard, varnished teak, drops with cushion inserts
- Adjustable fold-out teak dining table to port, drops to make double berth
- Satin-finish cabinetry
- Samsung flat-screen tv mounted on forward bulkhead
- Bose stereo surround speakers
- Overhead LED lighting
- Opening overhead Lewmar hatch with screen for ventilation
- Teak and holly cabin sole
- Expansive storage forward of starboard settee area

## GALLEY

A large gourmet galley greets you to starboard as you step down through the companionway hatch, with Corian countertops, front and top loading fridge/freezer, stainless steel sink, 3-burner stove, a microwave, and lots of storage for long cruises. There are plenty of deep storage lockers and lots of refrigerator and freezer space. There is even a designated pull-out cabinet for trash.

- Top and side loading Frigaboat fridge/freezer
- Corian countertops
- Princess Gourmet II 2-burner stove and oven, gimballed
- Stainless steel double-bowl sink
- Deep countertop cabinet storage
- Haier microwave, built-in
- Under-cabinet lighting
- Plexiglass splash guard between galley and main salon seating
- Custom starboard cutting board to cover one section of the sink

## FORWARD OWNER'S STATEROOM

The forward owner's cabin is nicely separated from the main salon area. A queen bed with an electronically adjustable tilting mattress for sitting up to read in bed lies centerline. The owner's cabin has direct access to the head.

- Reverse-cycle air conditioning and heat
- Electronically controlled tilting spring mattress for adjustable comfort
- Thick air spring mattress
- Raised teak and holly foot steps for easy access to the bed
- Direct access to head to port
- Large overhead Lewmar hatch for ventilation
- Cedar-lined hanging closet to starboard
- Personal seating space to port with make-up station
- LED overhead lighting and personal reading lights
- Overhead satin finish storage cabinets
- Great storage cabinetry below the berth with pullout drawers

## AFT GUEST CABIN

A lot of yachts in this size range can shortchange the guest quarters. Not so with this boat! There's a large private aft cabin with a spacious queen berth stretching athwartships. This berth offers great storage spaces with a large hanging locker, a shelf behind the headboard, and added shelf space above the engine compartment.

- Reverse-cycle air conditioning and heat
- Queen berth with air spring mattress
- Plush upholstered headboard with shelf storage behind
- Large hanging locker behind personal seating bench
- Large overhead opening Lewmar hatch that opens to the cockpit
- LED lighting and personal reading lights
- Easy access to aft section of engine room and Racor filters

## NAVIGATION STATION

The chart table lies just inside the companionway hatch to port. It is an aft-facing table with an easy line of sight up to the cockpit.

- Aft-facing navigation station with spacious nav table
- Nav table has two-section fold-up storage space
- Access to 12V and 120V electric panels in cabinetry
- Fusion stereo unit, Bluetooth capable, Sirius satellite radio
- Standard Horizon Matrix AIS VHF radio

## HEAD

The head is located forward of the port salon seating and is easily accessible from the salon and

from the forward owner's cabin. It features an electric head, a Corian countertop vanity and a separate shower area with seating.

- Electric macerating head
- Dual access from salon and forward cabin
- Corian counter vanity with above-counter glass bowl sink
- Mirror vanity storage
- Separate shower area with personal seat and shower curtain
- Additional shower shelf storage
- Opening Lewmar overhead hatch for ventilation
- Overhead LED lighting and vanity lighting

## MECHANICAL

- Yanmar 40hp diesel engine, fresh water cooled, direct drive
- Engine model: 3JH4E 3-cylinder diesel, 393 hours
- Engine panel at Edson pedestal at helm
- Racor fuel filtration
- .7GPH fuel consumption at cruise
- Motoring top speed: 8.0 knots
- Bronze 3-blade propeller
- 2-Zone air conditioning and heat

## ELECTRICAL

- 110V AC and 12V DC electric panel located at nav station
- Amp readouts on electric panel
- 12V outlet at electric panel,
- Dual 30amp shore power service
- Electric water heater (with engine coolant loop for hot water underway)
- Inverter/charger
- (2) 4D AGM batteries
- LED cabin lighting throughout interior
- 2-zone CruiseAir reverse-cycle air conditioning and heat
- 12V fresh water pump
- Fusion stereo with Sirius satellite radio and Bluetooth

## SAILS AND RIGGING

This yacht is designed with ultimate simplicity and ease of handling in mind. The Selden in-mast furling system is SO simple to handle. The genoa is controlled by a furling line, which runs along the port toe rail forward to the bow for easy furling. With primaries so close to the helm, single-handing is so easy. Once away from the dock, set the autopilot into the wind, deploy the main and genoa from the cockpit and heat out!



- Selden in-mast mainsail furling
- Doyle mainsail with vertical battens for in-mast furling
- Doyle 135% genoa with UV protection, navy sunbrella
- Furlex 300S genoa furling
- (2) Lewmar ST44 primary winches
- Electric Lewmar ST40 halyard winch, starboard cabin top at cockpit
- Lewmar ST40 cabintop winch
- Inboard genoa tracks with adjustable cars
- Seldon rigid adjustable boom vang
- Garhauer traveler and 4:1 main sheet
- Garhouer turning blocks on deck for lines leading aft to cockpit
- Split backstay
- Windex wind vane

## Sail Area

IJPE : 802.00 sq ft I : 47' 7" J : 14' 9" P : 43' 6" E : 15'

## DECKS

- Electric windlass in anchor locker
- Bruce anchor with chain
- Dodger with easy-to-see hard Makrolon eisenglass, custom covers
- Bimini and connector piece
- Blister preventing Technology on hull
- Stainless steel bow pulpit
- Stainless steel stern rail with port and starboard stern seats
- Deck handrails leading forward on cabintop, stainless steel
- Rub rail, full wrap with stainless steel insert
- Bi-fold teak opening companionway hatch
- Custom canvas covers for cockpit table and helm and winches
- Whaler gusher cockpit manual cockpit bilge pump
- Nonskid decks
- Easy walk-through access from cockpit to swim platform
- Swim platform with stainless steel ladder
- Through-hull fittings, all bronze below the waterline
- Cockpit locker storage for LPG tank and solenoid

## Manufacturer Provided Description

Lead keels, long travelers for precise sail control, and lengthy inboard genoa tracks so the sail plan is balanced in all wind conditions are just a few of the many design features that set the Catalina 385 apart from other yachts. More unique features include a watertight StrikeZone™ collision bulkhead aft of the anchor locker. A backstay system creates an impressive cockpit for

the avid sailor, and Catalina's unique SecureSocket™ chain plates mast support system affords superior load resolution. The 385's moderate beam is carried well aft for a spacious cockpit; modest freeboard reduces windage and a beautiful hand-finished teak interior brings it all home with classic warmth and styling that has been a trademark of Catalina for 41 years

## Exclusions

---

Owner's personal belongings.

## Disclaimer

---

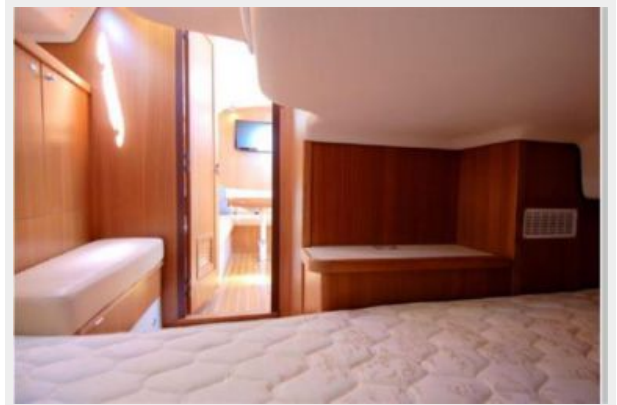
The Company offers the details of this vessel or yacht in good faith but cannot guarantee or warrant the accuracy of this information nor warrant the condition of the vessel. A buyer should instruct his representatives, agents, or his surveyors, to investigate such details as the buyer desires validated. This vessel or yacht is offered subject to prior sale, price change, or withdrawal without notice.

# PHOTOS







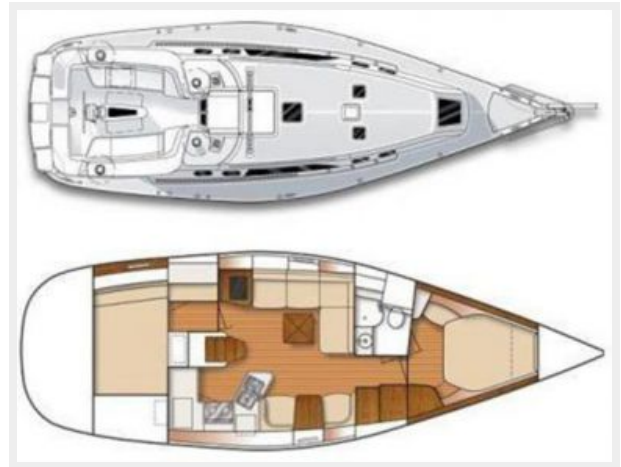












# CONTACTS

---

Andrey Shestakov, leading yacht broker of the sales department of Shestakov Yacht Sales Inc. Shestakov Yacht Sales Inc., the official representative of the Miami/Fort Lauderdale FL headquarters.

## Contact details

---

Email: [andrey@shestakovyachtsales.com](mailto:andrey@shestakovyachtsales.com)

Web: [shestakovyachtsales.com/en/](http://shestakovyachtsales.com/en/)

## Telephones

---

USA: +1(954)274-4435

## Office hours

---

Monday – Saturday: **9:00 - 21:00** EDT

Sunday: **closed**

## Address

---



Harbour Towne Marina, 850 NE 3rd St,  
STE 213, Dania, FL 33004