

NASHIRA II — CAMPER & NICHOLSONS



Builder: CAMPER & NICHOLSONS

Year Built: 1999

Model: Sloop

Price: PRICE ON APPLICATION

Location: Gibraltar

LOA: 121' 5" (37.00m)

Beam: 27' 8" (8.43m)

Min Draft: 11' 10" (3.60m)

Max Draft: 11' 10" (3.60m)

Cruise Speed: 11 Kts. (13 MPH)

Max Speed: 13 Kts. (15 MPH)

Our experienced yacht broker, Andrey Shestakov, will help you choose and buy a yacht that best suits your needs **NASHIRA II — CAMPER & NICHOLSONS** from our catalogue. Presently, at Shestakov Yacht Sales Inc., we have a wide variety of yachts available on our sale's list. We also work in close contact with all the big yacht manufacturers from all over the world.

If you would like to buy a yacht **NASHIRA II — CAMPER & NICHOLSONS** or would like help answering any questions concerning purchasing, selling or chartering a yacht, please call **+1(954)274-4435**

TABLE OF CONTENTS

TABLE OF CONTENTS	2
SPECIFICATIONS	3
Overview	3
Basic Information	3
Dimensions	3
Speed, Capacities and Weight	4
Accommodations	4
Hull and Deck Information	4
Engine Information	5
DETAILED INFORMATION	6
Full Specifications	6
Exclusions	10
Disclaimer	10
PHOTOS	11
CONTACTS	15
Contact details	15
Telephones	15
Office hours	15
Address	15

SPECIFICATIONS

Overview

- Extensive refit in 2016-2017 at Thunderbolt Marine, Savannah:
 - overhaul of all major engineering & technical systems
 - hull ultra sounded, hull & superstructure painted
 - mast surveyed, serviced and painted. Full rigging service
 - new Halls Spars boom
 - New Doyle Stratis sails 2016 (virtually unused)
 - new interior carpets & soft furnishings, new galley refrigeration and freezer units
 - new navigation systems (Furuno Navnet 3D processor, 19" screens, GPS, AIS, VHF, KVH coms)
- The last yacht to be built by Camper & Nicholson's shipyard in Gosport, UK
- 4 x en-suite cabins sleeping eight guests
- Ready to cruise in 2019
- Iconic and timeless Ed Dubois 37m deck saloon sloop

Basic Information

Category: Sloop

Sub Category: Cruising Sailboat

Model Year: 1999

Year Built: 1999

Refit Year: 2016

Refit Type: Full engineering, paint, rig, sails & systems

Country: Gibraltar

Registration #: 902662

Coast Guard #: London

Dimensions

LOA: 121' 5" (37.00m)

LWL: 99' 9" (30.40m)

Beam: 27' 8" (8.43m)

Min Draft: 11' 10" (3.60m)

Max Draft: 11' 10" (3.60m)

MFG Length: 120' 9" (36.80m)

Speed, Capacities and Weight

Cruise Speed: 11 Kts. (13 MPH)

Cruise Speed RPM: 1460 Kts.

Cruise Speed Range: 2800

Max Speed: 13 Kts. (15 MPH)

Max Speed RPM: 2100 Kts.

Displacement: 361558.10968 Pounds

Gross Tonnage: 168 Pounds

Water Capacity: 2113.376416 Gallons

Holding Tank: 150.57806964 Gallons

Fuel Capacity: 4990.21006228 Gallons

Fuel Consumption: 396.258078 Gallons

Accommodations

Total Cabins: 4

Total Berths: 8

Sleeps: 8

Total Heads: 5

Captain Cabin: True

Crew Cabin: 3

Crew Berths: 5

Crew Sleeps: 6

Crew Heads: 2

Hull and Deck Information

Hull Material: Aluminum

Deck Material: Teak

Hull Configuration: Fin & Skeg

Hull Color: Dark Blue

Hull Finish: Stainless Steel

Hull Designer: Ed Dubois

Exterior Designer: Ed Dubois

Interior Designer: Redman Whiteley Dixon

Engine Information

Engines: 1

Manufacturer: Caterpillar

Model: 3408C-TA

Engine Type: Inboard

Fuel Type: Diesel

DETAILED INFORMATION

Full Specifications

KEY FEATURES:

- Extensive refit in 2016-2017 at Thunderbolt Marine, Savannah. US:
 - overhaul of all major engineering & technical systems (inc main engine, gensets, water maker, new air conditioning, pumps, valves, windlass, rigging rams, drive gear, thruster, steering, rudder, captive winches, headsail furlers)
 - hull ultra sound, hull & superstructure painted
 - mast surveyed, serviced and painted. Full rigging service
 - new Halls Spars boom
 - new Doyle Stratis sails
 - new interior carpets & soft furnishings, new galley refrigeration and freezer units
 - new navigation systems (Furuno Navnet 3D processor, 19" screens, GPS, AIS, VHF, KVH coms)
 - The last yacht to be built by Camper & Nicholson's shipyard in Gosport, UK
- 4 x en-suite cabins sleeping eight guests
- Ready to cruise in 2019
- Iconic and timeless Ed Dubois 37m deck saloon sloop

GENERAL:

Name:	Nashira II	Built:	Camper & Nicholson, Gosport.
Hampshire. UK	Year launched:	1999	Type: Cutter rigged sloop
Flag:	British	Registered Port:	London Naval
Architect:	Dubois, UK	Interior design:	Redman Whiteley Dixon
Classification:	ABS *A1 Yachting Service - private vessel. (expires 29 November 2019)		
Sleeps:	8 Guests in 4 en-suite cabins	Construction:	Aluminium
hull, deck and superstructure.		Teak laid deck and cockpit	
Hull:	Ultra sounded (2015) and painted dark blue (Awlgrip), Thunderbolt Marine. USA		
Superstructure:	Painted white in 2015 (Sherwin-Williams)		
LOA:	37m (121'3)	LWL:	30.4m (99'7)
DRAFT:	3.6m (11'10)	BEAM:	8.43m (27'6)
TONNAGE:	168	DISPL:	164 Tonnes (approximately)
MACHINERY:			

Main engine: Caterpillar V8 Turbocharged & aftercooled Diesel

Full Zero hour overhaul by CAT agents Performance Power

Systems, GA. (2016) Model:	3408C (403kW)	Horsepower:	Rated
at 532hp @ 2100 rpm	Speed:	Cruising = 11.5 knots @ 1460 rpm (utilizing	
Hundested prop)	Maximum = 13 knots	Consumption:	1,500
litres per 24 hours (including 1 x genset use)	Range:	2800nm @ 11.5 knots	
(with 20% reserve) Hours:	1934 hrs total (400hrs use since zero hour engine		

overhaul in 2016) Gearbox: TwinDisc – Borg Warner Drive & propeller:
 Direct shaft drive to Hundested variable pitch propeller (serviced 2016) via P-Bracket Stern
 gear: Wartsila shaft seal (new 2016) New shaft &
 internal rod (2016) Exhaust: System overhauled, mufflers & lagging replaced
 Generators: 2 x Northern Lights 45kw each 380v **Full Zero**
hour overhaul by CAT agents Performance Power Systems, GA. (2016)
New exhaust system fitted Hours (Dec18): Stbd: 23,991 hrs (rebuilt @
 23,091hrs) Port: 24,223 hrs (rebuilt @ 23,263hrs)
 Consumption: 5.5 litres per hour per generator Shore power: 220 / 380 volt 3
 -phase 50HZ and 24 volt DC Batteries: All replaced 2016 – Mastervolt

TANKAGE:

Diesel: Total = 18,890 litres (3,964 imp Gal) in six tanks:
 2 x 1,875 litres forward 2 x
 1,295 litres aft 2 x 5,975 litres mid
 1 x 600 litre day tank

Fresh water: 2 x 4000 litres (881 imp gal) Black tank: 570 litres (125
 imp gal) Grey tank: 507 litres (111.6 imp gal) Hot water: Heated by 3
 x 80 litre 220v calorifiers

ANCILLARY EQUIPMENT:

Water maker: 2 x Aqua Whisper water maker units. 132 litres
 per hour Each (system overhauled 2016) All new membranes 2018

Air conditioning: 3 x Dometic MCGX 180,000BTU chillers (New 2018)
 New raw water and circulation pumps (2018)

Air handlers cleaned (2018) 5 x new air handlers in crew quarters
 (2016)

Anchor windlass: 2 x Maxwell 6000
 hydraulic (overhauled 2016)
 Twin fold out anchors on retracting arms - flush stowed under deck
 (system overhauled 2016)

Anchors: 2 x 180kgs (400lb) CQR anchors Chain =
 Port 100 metres / Starboard 120 metres

Bow thruster: Najad marine - model HPS 16SHT (fully overhauled 2016)

Steering: Wagner LA2 2.5-3.5-EB1 (serviced 2016)
 Skeg hung rudder (dropped, surveyed and bearings replaced)

WC's: TECMA electric flush throughout

Hydraulics: 4 x PTO's (Main engine, 2 x gensets, 1 x 24v supply) – reconditioned 2016

Bilge pumps: Gianneschi & Ramacciotti

Fire pumps: Gianneschi & Ramacciotti - Raw water fed with outlets at aft deck, fore peak and galley

Seacocks & valves: Alu-stainless valves, raw water manifolds, strainers and raw water piping all replaced (2016)

SPARS & RIGGING:

Cutter rigged sloop Formula carbon mast (un-stepped, re-painted and serviced 2016 by Seahawke Rigging, FL) Mast length 150' New Halls Spars furling carbon boom (2016) 2 x Harken hydraulic headsail furlers (fully serviced 2016) S/S rod rigging & hardware inspected and serviced (Seahawke Rigging, FL in 2016) NAVTEC rams - 2 x hydraulic backstay, vang and inner staysail rams (overhauled 2016) New halyards, running backstays and sheets in 2016

WINCHES: 6 x captive winches – for main halyard, blade sheets, mainsheet & 2 x backstays
2 x Lewmar 111 primary winches aft
2 x Lewmar 88 halyard winches at mast
Captive winches overhauled 2016-17

SAILS: 1 x Mainsail - Doyle STRATIS fully battened (2016) 1 x Reacher - Doyle STRATIS (Circa 2013) 1 x Inner blade with vertical battens - Doyle STRATIS (2016) 1 x high cut staysail – Norths Sails (hank-on removable inner forestay). Good condition All sails laundered and serviced December 2018 by Doyle Sails UK. NAVIGATION INSTRUMENTS & COMMUNICATIONS:

Internal navigation station:

2 x Neovo 19" monitors (New 2018) Furuno FS1562 SSB radio Furuno Navnet 3D Bb multi use processor and plotter (New 2017) Time Zero chart software (New 2018) Furuno FA50 AIS (New 2018) Radar Furuno 39 GPS (New 2018) Inmarsat C KVH Mini VSat TracPhone V3-IP for email, broadband and phone (New 2018) KVH Satellite TV (no current contract) Raymarine Tri-data (speed, log, depth and wind) repeated at external helm and crew mess Robertson AP300X pilot master unit Servo watch ships monitoring in crew mess

At twin external helm stations: Simrad HS35 DSC VHF at helm and repeater in crew mess (New 2017) Nauticomp multipurpose screens (at each helm station) Robertson AP300X pilot repeater (at each helm station) Sanshin searchlight control panel. Searchlight mounted on port side 1st spreader ACCOMODATION: Nashira II sleeps 8 guests in 4 guest cabins. Each cabin having its own bathroom

Master cabin: Large and spacious double bed cabin aft with king-size walk round bed. Bathroom with twin sinks, marble top and large bath and shower above Vanity table/desk Large wall

mounted television New cream wool carpets Sofa VIP cabin: Large and spacious cabin with double walkaround bed Sofa, cream wool carpets and wall linings (new 2016) Adjoining bathroom with shower stall and marble top sinks Twin cabin: Two large single beds Adjoining bathroom with shower stall and marble top sinks Twin bunk cabin: Large room with single fixed bed and vanity table Drop down pullman berth to create bunk arrangement Adjoining bathroom with shower stall and marble topped sink Ideal children's cabin or future office / gym Lower saloon: Very spacious 'relaxing' area with two sofas to port, coffee tables and bookshelves Large flat screen flush mounted television Large dining table to starboard seating 8 persons comfortably

Raised deck saloon: Light and spacious area giving excellent panoramic views out thanks to large windows Long sofas port and starboard side. Large dinette table to starboard Internal forward facing master navigation area to starboard Bar with small sink, large integral drinks fridge and ice maker Crew quarters: U-shaped crew mess dinette, large galley and access aft to the engine room Sleeps 6 in 3 x separate cabins 1 x large captains cabin with double bed and adjoining shower room 1 x aft twin bunk cabin with adjoining shower room 1 x forward twin bunk cabin sharing shower room

GALLEY:

220v glass top 4 x ring hob (New 20180)

Overhead extractor fan (New 2019)

Electric Oven

Samsung dishwasher (New 2017)

Icemaker

1 x New stainless-steel Freezer by TRUE (New 2016)

1 x New stainless steel Fridge by TRUE (New 2016)

2 x Large integral bulkhead fridge

Microwave

Miele 220v clothes dryer

Siemens washing machine (2019) SAFETY EQUIPMENT:

Liferafts: 2 x Zodiac 16 pers liferafts (stowed in foredeck lockers)

TENDERS & TOYS:

Novurania Rib fitted with 85hp Yamaha 4 stroke outboard

Bauer dive compressor, 1 x bottle and Scuba equipment

MISCELLANEOUS:

Guest cutlery

Extensive galley supply and equipment

Carbon fold away passerelle

Overhead cockpit bimini with removable side screens

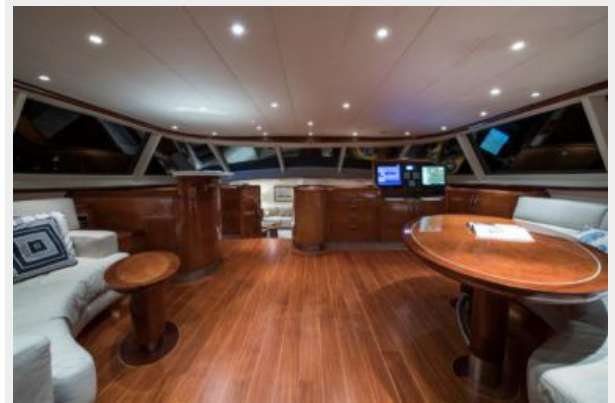
Exclusions

Owner's personal belongings.

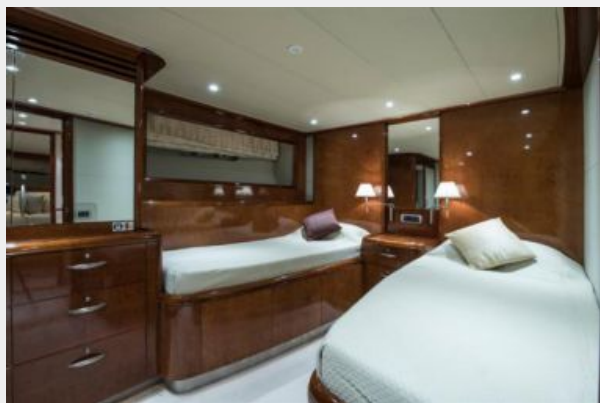
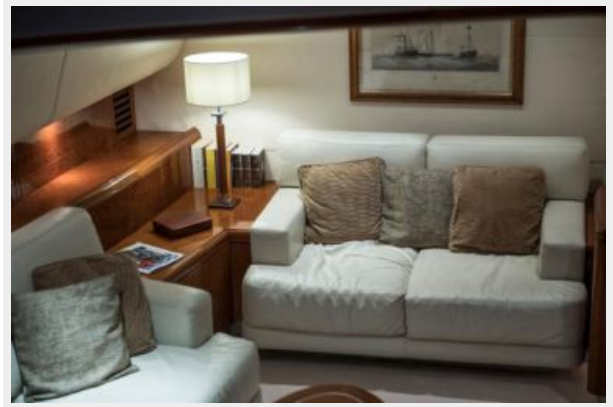
Disclaimer

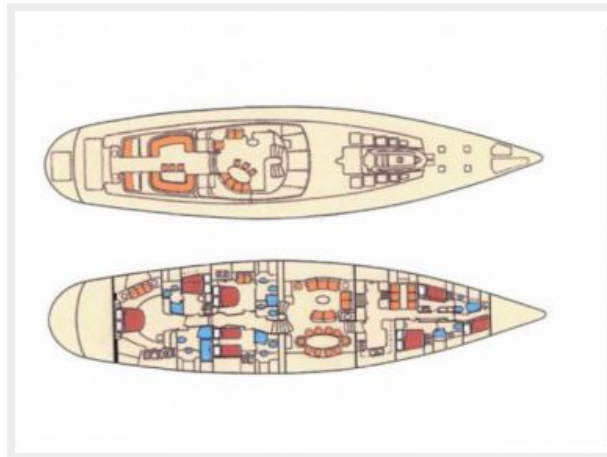
The Company offers the details of this vessel or yacht in good faith but cannot guarantee or warrant the accuracy of this information nor warrant the condition of the vessel. A buyer should instruct his representatives, agents, or his surveyors, to investigate such details as the buyer desires validated. This vessel or yacht is offered subject to prior sale, price change, or withdrawal without notice.

PHOTOS









CONTACTS

Andrey Shestakov, leading yacht broker of the sales department of Shestakov Yacht Sales Inc. Shestakov Yacht Sales Inc., the official representative of the Miami/Fort Lauderdale FL headquarters.

Contact details

Email: andrey@shestakovyachtsales.com

Web: shestakovyachtsales.com/en/

Telephones

USA: +1(954)274-4435

Office hours

Monday – Saturday: **9:00 - 21:00** EDT

Sunday: **closed**

Address



Harbour Towne Marina, 850 NE 3rd St,
STE 213, Dania, FL 33004