

NASHIRA II — CAMPER & NICHOLSONS



Судостроитель:

CAMPER & NICHOLSONS

Год постройки: 1999

Модель: Sloop

Цена: ЦЕНА ЯХТЫ ПО ЗАПРОСУ

Местонахождение: Gibraltar

Длина общая: 121' 5" (37.00m)

Ширина: 27' 8" (8.43m)

Мин. осадка: 11' 10" (3.60m)

Макс. осадка: 11' 10" (3.60m)

Крейс. скорость: 11 Kts. (13 MPH)

Макс. скорость: 13 Kts. (15 MPH)

Купить **NASHIRA II — CAMPER & NICHOLSONS** а также выбрать подходящую вам яхту из нашего каталога яхт вам поможет опытный яхтенный брокер Андрей Шестаков. На сегодняшний день компания **Shestakov Yacht Sales Inc.** имеет большое количество яхт в собственном списке продаж, а также тесно сотрудничает со всеми крупными яхтенными производителями по всему миру.

Для того чтобы купить яхту **NASHIRA II — CAMPER & NICHOLSONS** а также проконсультироваться по любому вопросу связанному с покупкой, продажей, чартером яхт позвоните по телефону **+7(918)465-66-44**.

ОГЛАВЛЕНИЕ

ОГЛАВЛЕНИЕ	2
ХАРАКТЕРИСТИКИ	3
Обзор	3
Основная информация	3
Размеры	3
Скорость, вместимость и масса	4
Размещение	4
Корпус и палуба	4
Информация о двигателе	5
ПОДРОБНОЕ ОПИСАНИЕ	6
Full Specifications	6
Исключения	10
Отказ от ответственности	10
ФОТОГРАФИИ	11
КОНТАКТЫ	15
Контактная информация	15
Телефоны	15
Время работы	15
Адрес	15

ХАРАКТЕРИСТИКИ

Обзор

- Extensive refit in 2016-2017 at Thunderbolt Marine, Savannah:
 - overhaul of all major engineering & technical systems
 - hull ultra sounded, hull & superstructure painted
 - mast surveyed, serviced and painted. Full rigging service
 - new Halls Spars boom
 - New Doyle Stratis sails 2016 (virtually unused)
 - new interior carpets & soft furnishings, new galley refrigeration and freezer units
 - new navigation systems (Furuno Navnet 3D processor, 19" screens, GPS, AIS, VHF, KVH coms)
- The last yacht to be built by Camper & Nicholsons shipyard in Gosport, UK
- 4 x en-suite cabins sleeping eight guests
- Ready to cruise in 2019
- Iconic and timeless Ed Dubois 37m deck saloon sloop

Основная информация

Тип судна: Sloop

Подкатегория: Крейсерская яхта

Модельный год: 1999

Год постройки: 1999

Год обновления: 2016

Вид обновления: Full engineering, paint, rig, sails & systems

Страна: Gibraltar

Регистрационный номер: 902662

Номер регистрации в береговой охране: London

Размеры

Длина общая: 121' 5" (37.00m)

Длина по ватерлинии: 99' 9" (30.40m)

Ширина: 27' 8" (8.43m)

Мин. осадка: 11' 10" (3.60m)

Макс. осадка: 11' 10" (3.60m)

Длина привального бруса: 120' 9" (36.80m)

Скорость, вместимость и масса

Крейс. скорость: 11 Kts. (13 MPH)	Крейсерская скорость поворота: 1460 Kts.
Дальность на крейсерской скорости: 2800	Макс. скорость: 13 Kts. (15 MPH)
	Макс. скорость поворота: 2100 Kts.
Водоизмещение: 361558.10968 Pounds	Чистый вес: 168 Pounds
Вместимость воды: 2113.376416 Gallons	Вместимость сточного бака: 150.57806964 Gallons
Объем топливного бака: 4990.21006228 Gallons	Расход топлива: 396.258078 Gallons

Размещение

Всего кают: 4	Всего коек: 8
Спальные места: 8	Всего ком. состава: 5
Каюта капитана: Да	Каюты экипажа: 3
Койки экипажа: 5	Спальных мест экипажа: 6
Комм. состав экипажа: 2	

Корпус и палуба

Материал корпуса: Aluminum	Материал палубы: Teak
Комплектация корпуса: Fin & Skeg	Цвет корпуса: Dark Blue
Отделка корпуса: Stainless Steel	Дизайнер корпуса: Ed Dubois
Дизайнер экстерьера: Ed Dubois	Дизайнер интерьера: Redman Whiteley Dixon

Информация о двигателе

Двигатели: 1

Производитель: Caterpillar

Модель: 3408C-TA

Тип двигателя: Inboard

Тип топлива: Diesel

ПОДРОБНОЕ ОПИСАНИЕ

Full Specifications

KEY FEATURES:

- Extensive refit in 2016-2017 at Thunderbolt Marine, Savannah. US:
 - overhaul of all major engineering & technical systems (inc main engine, gensets, water maker, new air conditioning, pumps, valves, windlass, rigging rams, drive gear, thruster, steering, rudder, captive winches, headsail furlers)
 - hull ultra sound, hull & superstructure painted
 - mast surveyed, serviced and painted. Full rigging service
 - new Halls Spars boom
 - new Doyle Stratis sails
 - new interior carpets & soft furnishings, new galley refrigeration and freezer units
 - new navigation systems (Furuno Navnet 3D processor, 19" screens, GPS, AIS, VHF, KVH coms)
 - The last yacht to be built by Camper & Nicholson's shipyard in Gosport, UK
- 4 x en-suite cabins sleeping eight guests
- Ready to cruise in 2019
- Iconic and timeless Ed Dubois 37m deck saloon sloop

GENERAL:

Name:	Nashira II	Built:	Camper & Nicholson, Gosport.
Hampshire. UK	Year launched:	1999	Type: Cutter rigged sloop
Flag:	British Registered	Port:	London Naval
Architect:	Dubois, UK	Interior design:	Redman Whiteley Dixon
Classification:	ABS *A1 Yachting Service - private vessel. (expires 29 November 2019)		
Sleeps:	8 Guests in 4 en-suite cabins	Construction:	Aluminium
hull, deck and superstructure.		Teak laid deck and cockpit	
Hull:	Ultra sounded (2015) and painted dark blue (Awlgrip), Thunderbolt Marine. USA		
Superstructure:	Painted white in 2015 (Sherwin-Williams)		
LOA:	37m (121'3)	LWL:	30.4m (99'7)
DRAFT:	3.6m (11'10)	BEAM:	8.43m (27'6)
TONNAGE:	168	DISPL:	164 Tonnes (approximately)
MACHINERY:			

Main engine: Caterpillar V8 Turbocharged & aftercooled Diesel

Full Zero hour overhaul by CAT agents Performance Power

Systems, GA. (2016)	Model:	3408C (403kW)	Horsepower:	Rated
at 532hp @ 2100 rpm	Speed:	Cruising = 11.5 knots @ 1460 rpm (utilizing		
Hundested prop)		Maximum = 13 knots	Consumption:	1,500
litres per 24 hours (including 1 x genset use)	Range:	2800nm @ 11.5 knots		
(with 20% reserve) Hours:	1934 hrs total (400hrs use since zero hour engine			

overhaul in 2016) Gearbox: TwinDisc – Borg Warner Drive & propeller:
 Direct shaft drive to Hundested variable pitch propeller (serviced 2016) via P-Bracket Stern
 gear: Wartsila shaft seal (new 2016) New shaft &
 internal rod (2016) Exhaust: System overhauled, mufflers & lagging replaced
 Generators: 2 x Northern Lights 45kw each 380v **Full Zero**
hour overhaul by CAT agents Performance Power Systems, GA. (2016)
New exhaust system fitted Hours (Dec18): Stbd: 23,991 hrs (rebuilt @
 23,091hrs) Port: 24,223 hrs (rebuilt @ 23,263hrs)
 Consumption: 5.5 litres per hour per generator Shore power: 220 / 380 volt 3
 -phase 50HZ and 24 volt DC Batteries: All replaced 2016 – Mastervolt

TANKAGE:

Diesel: Total = 18,890 litres (3,964 imp Gal) in six tanks:
 2 x 1,875 litres forward 2 x
 1,295 litres aft 2 x 5,975 litres mid
 1 x 600 litre day tank
 Fresh water: 2 x 4000 litres (881 imp gal) Black tank: 570 litres (125
 imp gal) Grey tank: 507 litres (111.6 imp gal) Hot water: Heated by 3
 x 80 litre 220v calorifiers

ANCILLARY EQUIPMENT:

Water maker: 2 x Aqua Whisper water maker units. 132 litres
 per hour Each (system overhauled 2016) All new membranes 2018
 Air conditioning: 3 x Dometic MCGX 180,000BTU chillers (New 2018)
 New raw water and circulation pumps (2018)
 Air handlers cleaned (2018) 5 x new air handlers in crew quarters
 (2016)
 Anchor windlass: 2 x Maxwell 6000
 hydraulic (overhauled 2016)
 Twin fold out anchors on retracting arms - flush stowed under deck
 (system overhauled 2016)
 Anchors: 2 x 180kgs (400lb) CQR anchors Chain =
 Port 100 metres / Starboard 120 metres
 Bow thruster: Najad marine - model HPS 16SHT (fully overhauled 2016)
 Steering: Wagner LA2 2.5-3.5-EB1 (serviced 2016)
 Skeg hung rudder (dropped, surveyed and bearings replaced)
 WC's: TECMA electric flush throughout

Hydraulics: 4 x PTO's (Main engine, 2 x gensets, 1 x 24v supply) – reconditioned 2016

Bilge pumps: Gianneschi & Ramacciotti

Fire pumps: Gianneschi & Ramacciotti - Raw water fed with outlets at aft deck, fore peak and galley

Seacocks & valves: Alu-stainless valves, raw water manifolds, strainers and raw water piping all replaced (2016)

SPARS & RIGGING:

Cutter rigged sloop Formula carbon mast (un-stepped, re-painted and serviced 2016 by Seahawke Rigging, FL) Mast length 150' New Halls Spars furling carbon boom (2016) 2 x Harken hydraulic headsail furlers (fully serviced 2016) S/S rod rigging & hardware inspected and serviced (Seahawke Rigging, FL in 2016) NAVTEC rams - 2 x hydraulic backstay, vang and inner staysail rams (overhauled 2016) New halyards, running backstays and sheets in 2016

WINCHES: 6 x captive winches – for main halyard, blade sheets, mainsheet & 2 x backstays
2 x Lewmar 111 primary winches aft
2 x Lewmar 88 halyard winches at mast
Captive winches overhauled 2016-17

SAILS: 1 x Mainsail - Doyle STRATIS fully battened (2016) 1 x Reacher - Doyle STRATIS (Circa 2013) 1 x Inner blade with vertical battens - Doyle STRATIS (2016) 1 x high cut staysail – Norths Sails (hank-on removable inner forestay). Good condition All sails laundered and serviced December 2018 by Doyle Sails UK. NAVIGATION INSTRUMENTS & COMMUNICATIONS:

Internal navigation station:

2 x Neovo 19" monitors (New 2018) Furuno FS1562 SSB radio Furuno Navnet 3D Bb multi use processor and plotter (New 2017) Time Zero chart software (New 2018) Furuno FA50 AIS (New 2018) Radar Furuno 39 GPS (New 2018) Inmarsat C KVH Mini VSat TracPhone V3-IP for email, broadband and phone (New 2018) KVH Satellite TV (no current contract) Raymarine Tri-data (speed, log, depth and wind) repeated at external helm and crew mess Robertson AP300X pilot master unit Servo watch ships monitoring in crew mess

At twin external helm stations: Simrad HS35 DSC VHF at helm and repeater in crew mess (New 2017) Nauticomp multipurpose screens (at each helm station) Robertson AP300X pilot repeater (at each helm station) Sanshin searchlight control panel. Searchlight mounted on port side 1st spreader ACCOMODATION: Nashira II sleeps 8 guests in 4 guest cabins. Each cabin having its own bathroom

Master cabin: Large and spacious double bed cabin aft with king-size walk round bed. Bathroom with twin sinks, marble top and large bath and shower above Vanity table/desk Large wall

mounted television New cream wool carpets Sofa VIP cabin: Large and spacious cabin with double walkaround bed Sofa, cream wool carpets and wall linings (new 2016) Adjoining bathroom with shower stall and marble top sinks Twin cabin: Two large single beds Adjoining bathroom with shower stall and marble top sinks Twin bunk cabin: Large room with single fixed bed and vanity table Drop down pullman berth to create bunk arrangement Adjoining bathroom with shower stall and marble topped sink Ideal children's cabin or future office / gym Lower saloon: Very spacious 'relaxing' area with two sofas to port, coffee tables and bookshelves Large flat screen flush mounted television Large dining table to starboard seating 8 persons comfortably

Raised deck saloon: Light and spacious area giving excellent panoramic views out thanks to large windows Long sofas port and starboard side. Large dinette table to starboard Internal forward facing master navigation area to starboard Bar with small sink, large integral drinks fridge and ice maker Crew quarters: U-shaped crew mess dinette, large galley and access aft to the engine room Sleeps 6 in 3 x separate cabins 1 x large captains cabin with double bed and adjoining shower room 1 x aft twin bunk cabin with adjoining shower room 1 x forward twin bunk cabin sharing shower room

GALLEY:

220v glass top 4 x ring hob (New 20180)

Overhead extractor fan (New 2019)

Electric Oven

Samsung dishwasher (New 2017)

Icemaker

1 x New stainless-steel Freezer by TRUE (New 2016)

1 x New stainless steel Fridge by TRUE (New 2016)

2 x Large integral bulkhead fridge

Microwave

Miele 220v clothes dryer

Siemens washing machine (2019) SAFETY EQUIPMENT:

Liferafts: 2 x Zodiac 16 pers liferafts (stowed in foredeck lockers)

TENDERS & TOYS:

Novurania Rib fitted with 85hp Yamaha 4 stroke outboard

Bauer dive compressor, 1 x bottle and Scuba equipment

MISCELLANEOUS:

Guest cutlery

Extensive galley supply and equipment

Carbon fold away passerelle

Overhead cockpit bimini with removable side screens

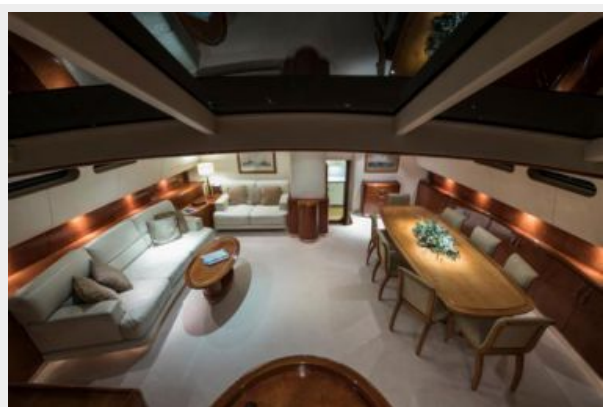
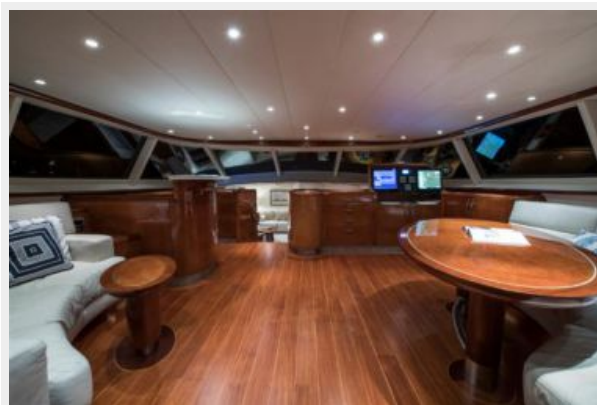
Исключения

При продаже яхты исключаются личные вещи владельца.

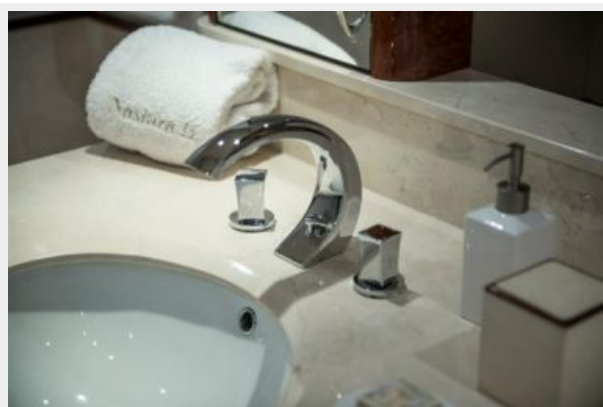
Отказ от ответственности

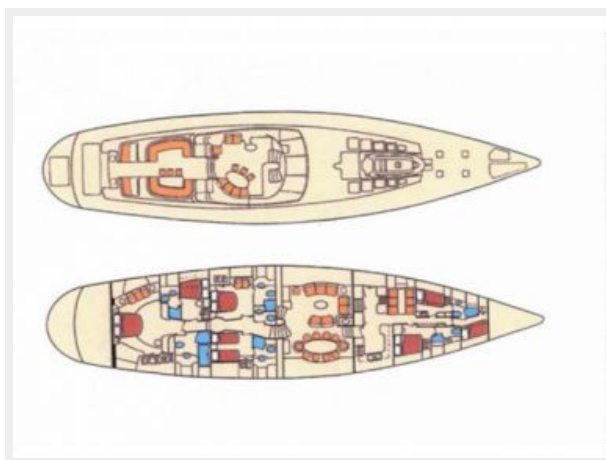
Компания предоставляет описание судна или яхты добросовестно, но не может гарантировать точность этой информации, а также не ручается за техническое состояние. Покупатель должен проинструктировать своих агентов или оценщиков исследовать представленную информацию более подробно, по собственному желанию. Продажа судна или яхты, изменение цены или снятие с продажи будет происходить без предварительного уведомления.

ФОТОГРАФИИ









КОНТАКТЫ

Андрей Шестаков (Andrey Shestakov) – ведущий яхтенный брокер отдела продаж яхт и судов компании Shestakov Yacht Sales Inc. Официальный представитель Shestakov Yacht Sales Inc. для русскоговорящих клиентов в центральном офисе компании в Майами/Форт Лодердейл/Флорида/США.

Контактная информация

Email: andrey@shestakovyachtsales.com

Web: shestakovyachtsales.com

Телефоны

Краснодарский край: **+7(918)465-66-44**

США, Майами, Флорида: **+1(954)274-4435**

Время работы

Понедельник – Суббота: **9:00 - 21:00**
EDT

Воскресенье: **Закрето**

Адрес



Harbour Towne Marina, 850 NE 3rd St,
STE 213, Dania, FL 33004