

KAREN — HANSE



Судостроитель: HANSE

Год постройки: 2006

Модель: Крейсерская яхта

Цена: **ЦЕНА ЯХТЫ ПО ЗАПРОСУ**

Местонахождение: United States

Длина общая: 37' 0" (11.28m)

Ширина: 12' 3" (3.73m)

Мин. осадка: 6' 5" (1.96m)

Макс. осадка: 6' 5" (1.96m)

Купить **KAREN — HANSE** а также выбрать подходящую вам яхту из нашего каталога яхт вам поможет опытный яхтенный брокер Андрей Шестаков. На сегодняшний день компания **Shestakov Yacht Sales Inc.** имеет большое количество яхт в собственном списке продаж, а также тесно сотрудничает со всеми крупными яхтенными производителями по всему миру.

Для того чтобы купить яхту **KAREN — HANSE** а также проконсультироваться по любому вопросу связанному с покупкой, продажей, чартером яхт позвоните по телефону **+7(918)465-66-44**.

ОГЛАВЛЕНИЕ

ОГЛАВЛЕНИЕ	2
ХАРАКТЕРИСТИКИ	3
Обзор	3
Основная информация	4
Размеры	4
Скорость, вместимость и масса	4
Размещение	4
Корпус и палуба	4
Информация о двигателе	5
ПОДРОБНОЕ ОПИСАНИЕ	6
Features	6
Исключения	10
Отказ от ответственности	10
ФОТОГРАФИИ	11
КОНТАКТЫ	18
Контактная информация	18
Телефоны	18
Время работы	18
Адрес	18

ХАРАКТЕРИСТИКИ

Обзор

--BOW THRUSTER--KIWI FEATHERING PROP--WATERMAKER--DIESEL HEATER--AC/HEAT--FULL COCKPIT ENCLOSURE--SOLAR--HD RADAR--SSB--AIS--DINGHY--OUTBOARD--DIVE COMPRESSOR--MUCH MORE!!

First introduced in 2006, the Hanse 370 was an extremely popular model, with around 950 hulls built between its introduction and the introduction of its replacement model in 2011. From the drafting tables of Fietje Judel and Rolf Vrolijk, renowned among other things as the designers for Team Alinghi, winner of the 2003 America's Cup. The Hanse line is known for their innovative designs, good looks and quality of construction.

As fast as it is beautiful, the Hanse 370 is designed for excellent performance and ease of handling. The standard performance keel makes for great upwind performance and good stability. The lines are sleek and powerful and the cockpit is wide and deep, making it comfortable and safe for crew on the race course or out with the family for the weekend. All of the sheets are led back to the safety of the cockpit. As with all Hanses, the self-tacking jib, tacking is just a run of the wheel, so short tacking up a narrow channel is a piece of cake. The teak decks and cockpit provide safe, sure footing and are visually pleasing as well.

Karen is a proven world voyager, having participated in the 2007 ARC Rally for Cruisers from Europe to the US and traveled throughout the Caribbean and the East Coast of the US and Canada.

Below decks you will find a contemporarily designed space with clean lines and well thought out features. The feeling is light, functional, airy and comfortable.

You can't really appreciate the concept until you have seen and sailed one. Hanse's are extremely affordable and offer a true value. Our offering, Karen, has served her family well and carried them safely from port to port in their adventures. They have completed their journey with their children and have moved on to other adventures. Karen is well equipped for cruising- be it on the Bay or across the oceans. She now sits patiently awaiting her next owners. Call and make an appointment to come see her today!

Основная информация

Тип судна: Крейсерская яхта	Подкатегория: Sloop
Модельный год: 2006	Год постройки: 2006
Страна: United States	Регистрационный номер: SSR 130465
Верх: Bimini Top	

Размеры

Длина общая: 37' 0" (11.28m)	Длина по ватерлинии: 32' 9" (9.98m)
Ширина: 12' 3" (3.73m)	Мин. осадка: 6' 5" (1.96m)
Макс. осадка: 6' 5" (1.96m)	Трапы: 58' 3" (17.75m)

Скорость, вместимость и масса

Водоизмещение: 14991 Pounds	Вместимость воды: 85 Gallons
Объем топливного бака: 37 Gallons	

Размещение

Всего кают: 3	Всего коек: 7
Спальные места: 7	Всего ком. состава: 1

Корпус и палуба

Материал корпуса: Fiberglass	Комплектация корпуса: Bulb Keel
Цвет корпуса: White	Дизайнер корпуса: Judel / Vrolijk & Co.

Информация о двигателе

Двигатели: 1

Производитель: Yanmar

Модель: 3YM30

Тип двигателя: Sail Drive

Тип топлива: Diesel

ПОДРОБНОЕ ОПИСАНИЕ

Features

Accommodations

Forward stateroom: Starting forward in the master stateroom, there is a 6'8" long innerspring mattress, with storage beneath the bunk. Over the berth and along the hullsides are fiddled shelves. There are double door lockers on port and starboard; each with hanging & shelf storage space and a fiddled shelf above. Headroom is 6'2". For lighting and ventilation, there are two opening ports, a hatch with screen overhead and two Hella fans. Additional lighting is from two 2 LED reading lights and two overhead lights.

Saloon: On the port, there are two club chairs with a chart table surface between them. There is storage beneath and behind both seats. Above the aft seat are frosted glass double doors concealing the electrical panels and electronics, which provide a nice finished appearance. Behind the forward seat is a locker and there are fiddled shelves between. On starboard, there is a C-shaped dinette, with storage below and behind along the hullside. Above and behind along the hull are lockers with doors and a fiddled shelf space between them. The dinette table is unique, in that it is built of teak decking, with a compass rose inlay; it swivels and can simply lift out and move to serve double duty as the cockpit table. Headroom is 6'2"; ventilation and lighting are provided by an overhead hatch w/screen, three opening ports, three LED reading lights, two overhead lights, and two Hella fans.

Galley: The galley is located on starboard and is L-shape, with the double sink facing forward. The Corian countertops all have radiused corners- no sharp edges- and a stainless steel grab bar. There is a cabinet beneath the sink and Corian inserts to cover the sink when not in use. To the right of the sink is the icebox, with 12v — refrigeration and top and front-loading access. Moving round and along the hull, there is a two burner stove, with a counter top cover and a drop-front locker for pots and pans storage beneath it. On either side of the stove drawers and locker storage. Above the counter and stove along hull are three single door lockers, a fiddled shelf with a frosted glass front and a locker above that. Headroom is 6'2".

Aft staterooms: Both cabins are identical, with a 77" x 61" berth, double door lockers with hanging and shelf storage and a fiddled shelf above. Each also has an overhead hatch, one opening port, an LED reading light and one overhead light. Headroom is 6'.

Head: The head is located at the base of the companionway on port. As you enter, the head is to your left, sink directly in front of you and the separate stall shower is to the right of the sink. There is locker and cabinet space above and below the sink. A glass panel and door separate the shower area, which has a seat, an organizer rack for shampoos and such and an adjustable height shower wand mounted on a bar. One large opening port provides plenty of ventilation and there is an overhead light as well.

Galley

- Double polished stainless steel sink
- Single lever H/C water mixer
- Whale fresh water hand pump
- Whale salt water foot pump
- Shurflo water filtration
- Ice box w/top and front access
- Isotherm 12V refrigeration
- Black Corian counter tops with maple edge
- Stainless steel grab rail
- Eno 2-burner LPG stove w/ oven and safety bar

Head

- Molded fiberglass head compartment with non-skid floor
- Molded fiberglass rectangular sink
- Single lever stainless steel H/C faucet
- Separate stall shower
- Shower wand on slide bar with single lever mixer
- Frosted glass shower door
- Electric shower sump
- Jabsco manual head
- Holding tank monitor
- Y-valve for overboard discharge

Water Systems

- Pressure water pump
- Shurflo accumulator tank
- Water heater w/engine heat exchanger
- Transom shower – cold only
- Spectra Ventura 200T water maker w/remote computer controller (2013)
- Plastimo manual bilge pump
- Electric bilge pumps (2)

Hull and Deck

- Teak decks are vacuum bagged down
- Offset single anchor roller
- Spade 20kg plow anchor w/300' of 8mm G4 chain (chain new in 2013)
- Kobra 16kg anchor
- Lewmar 1000 electric windlass
- Mooring cleats (6)

- Double wire lifelines w/P&S boarding gates
- Dodger w/side grab bars
- Bimini w/solar panel mounts above
- Full cockpit enclosure (2013)
- Walk-thru transom

Sails and Rigging

- Double spreader keel stepped tapered aluminum mast
- Rod rigging (2014)
- Facnor roller furler
- Running backs
- Split Spectra backstay (2014)
- Navtec hydraulic backstay adjuster (2014)
- Sparcraft rigid boom vang
- Spinnaker pole car and track on mast
- Two whisker poles
- Self-tending jib
- Harken mainsheet traveler & car
- Mid-boom sheeting on main
- All lines are led aft to the cockpit
- Harken EVO 2SP40ST primary winches
- Harken EVO 2SP40ST secondary winches
- Harken 2SP40ST housetop winches (2)
- Spinlock line clutches (11)
- Spare main halyard
- North main with three single line reef points led aft to the cockpit
- Stack Pack with lazy jacks
- North self-tacking jib
- Hyde 120% Genoa w/UV cover and foam luff
- Storm jib (hanks on over furling jib)

Engine and Machinery

- Yanmar 3YM30 30HP engine w/sail drive
- Transmission & sail drive replaced (2013)
- Raw water pump replaced (2014)
- Kiwi 3-blade feathering prop (w/spare blades)
- Molded fiberglass steering pedestal
- Leather wrapped 47" SS wheel
- Plastimo compass
- Side Power bow thruster w/helm joystick control
- Side Power HH #8986 thruster/windlass remotes (2)
- Off-shore fuel gauge w/ low-level alarm

- Webasto diesel cabin heater
- 16,000BTU reverse cycle heat/air (needs water pump- 2011)

Electrical

- Marinco 30A 125V shore power connection
- 30A 50 ft. shore power cord
- 30A/15A power cord adapter
- Blue Sea Systems 120V AC Panel
- 12v electrical panel
- Two Mastervolt 40A battery chargers (2013)
- Xantrax 1500W Inverter
- Go Power GP-SWR-B-12 Sine wave inverter remote control
- 75W solar panels (3)
- Three Group 27 AGM house battery bank (2013)
- Second bank of Group 27 AGM house batteries (3)
- AGM starting battery
- NASA BM-1 battery monitor
- 12v receptacles throughout
- 120V receptacles throughout
- 240V distribution panel and water heater element (not currently installed) for conversion back to 240V power

Electronics

- Garmin 18' HD radar (2013)
- Garmin 5212 chartplotter/radar at helm (2013)
- Garmin 441S chartplotter at helm (2014)
- Simrad CP31 chartplotter
- AIS transceiver
- Simrad AP16 autopilot
- Simrad S12 wind
- Simrad IS12 combi
- Icom IC-M802 SSB
- Icom AT140 auto tuner
- Insulated backstay SSB antenna
- Icom SP-24 external speaker
- SCSP4 Dragon DR7800 HF pactor modem
- OS-242508-NF Omni directional dbi antenna
- Garmin VHF200 radio w/DSC
- Garmin handheld VHF remotes (2)
- Standard Horizon floating handheld VHF
- JVC KD-R301 DVD/WMA/MP3 receiver
- Avtes model W193D 19" diagonal LCD TV/DVD combo

- Glomax TV antenna
- Firdell Blipper radar reflector

Other Equipment

- Viking RescuYou Pro four man life raft in valise (2013)
- ACR rapid ditch bag
- Fiorentino 9' Para-Anchor sea anchor w/350' deployment rode
- West Marine AL-290 rollup dinghy with metal floor (2013)
- Honda 4-stroke BF23D 2.3HP outboard (2008)
- Mercury 8HP outboard (2013)
- SS outboard motor hoists (2)
- Outboard motor pads (2)
- Jim-buoy horseshoe ring
- Ocean Safety throwing strap
- Emergency tiller
- Cockpit cushions
- Swim ladder
- Fenders & dock lines
- Winch handles
- Fishing rod holder
- Windex
- Plastimo SS clock
- Plastimo SS barometer

Exclusions

Owner's personal effects and any items not specifically described in this listing

Исключения

При продаже яхты исключаются личные вещи владельца.

Отказ от ответственности

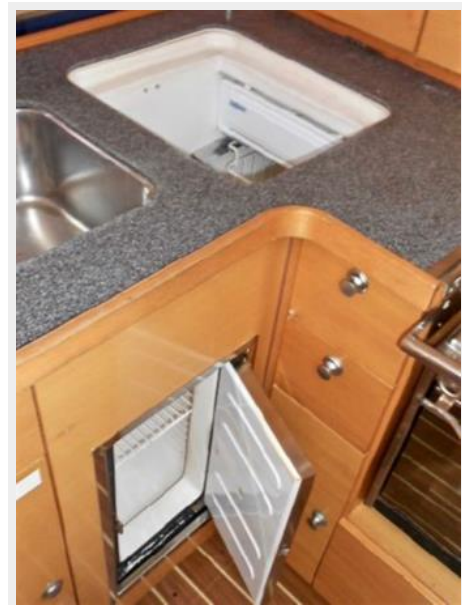
Компания предоставляет описание судна или яхты добросовестно, но не может гарантировать точность этой информации, а также не ручается за техническое состояние. Покупатель должен проинструктировать своих агентов или оценщиков исследовать представленную информацию более подробно, по собственному желанию. Продажа судна или яхты, изменение цены или снятие с продажи будет происходить без предварительного уведомления.

ФОТОГРАФИИ



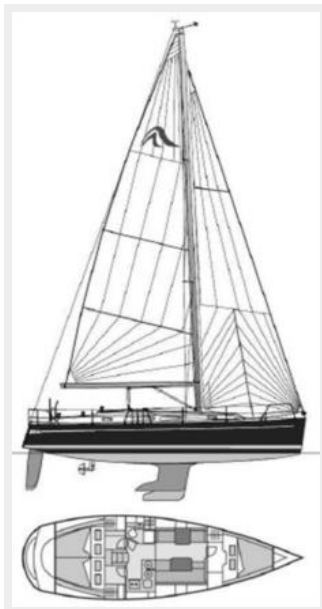
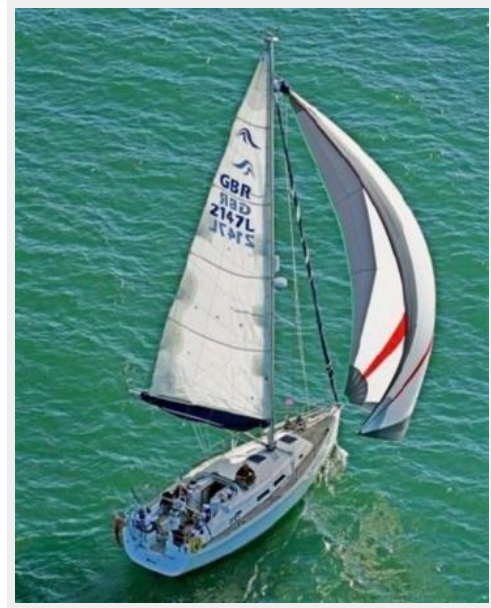












КОНТАКТЫ

Андрей Шестаков (Andrey Shestakov) – ведущий яхтенный брокер отдела продаж яхт и судов компании Shestakov Yacht Sales Inc. Официальный представитель Shestakov Yacht Sales Inc. для русскоговорящих клиентов в центральном офисе компании в Майами/Форт Лодердейл/Флорида/США.

Контактная информация

Email: andrey@shestakovyachtsales.com

Web: shestakovyachtsales.com

Телефоны

Краснодарский край: **+7(918)465-66-44**

США, Майами, Флорида: **+1(954)274-4435**

Время работы

Понедельник – Суббота: **9:00 - 21:00**
EDT

Воскресенье: **Закрито**

Адрес



Harbour Towne Marina, 850 NE 3rd St,
STE 213, Dania, FL 33004