

CUTLASS — PACIFIC SEACRAFT



Builder: PACIFIC SEACRAFT

LOA: 37' 0" (11.28m)

Year Built: 1977

Beam: 10' 10" (3.30m)

Model: Cruising Sailboat

Price: PRICE ON APPLICATION

Location: United States

Our experienced yacht broker, Andrey Shestakov, will help you choose and buy a yacht that best suits your needs CUTLASS — PACIFIC SEACRAFT from our catalogue. Presently, at Shestakov Yacht Sales Inc., we have a wide variety of yachts available on our sale's list. We also work in close contact with all the big yacht manufacturers from all over the world.

If you would like to buy a yacht CUTLASS — PACIFIC SEACRAFT or would like help answering any questions concerning purchasing, selling or chartering a yacht, please call +1(954)274-4435

TABLE OF CONTENTS

TABLE OF CONTENTS	2
SPECIFICATIONS	3
Overview	3
Basic Information	3
Dimensions	3
Speed, Capacities and Weight	4
Accommodations	4
Hull and Deck Information	4
Engine Information	4
DETAILED INFORMATION	5
Features	5
Exclusions	8
Disclaimer	8
PHOTOS	9
CONTACTS	14
Contact details	14
Telephones	14
Office hours	14
Address	14

SPECIFICATIONS

Overview

Built in the US by Cruising Consultants of Southern California, the original Crealock 37 design by W.I.B Crealock was introduced in 1977 and built with the same solid hull construction, beautiful lines and sailing performance, of her Pacific Seacraft sisters to follow. They built sixteen of them from 1977 until 1979.

In 1980 Pacific Seacraft purchased the molds and began steady production of the model. Now, 38 years later, you can still purchase a Pacific Seacraft 37. They are known as high-quality bluewater voyagers and you will find them in harbors all around the world.

Our offering, Cutlass, has had some improvements to her in the last few years:

- Repowered and a new prop in 2014
- Wire life lines replaced in 2015
- Standing rigging replaced at Pacific Seacraft in 2015
- Batteries replaced in 2015

The current owner bought her and spent about 6 years cruising the East Coast. Due to some personal issues, she is in need of some attention. As such, he is flexible on price. Her bones are good, she just needs someone who has the time to bring her back to her former self. They are great bluewater boats!

Basic Information

Category: Cruising Sailboat

Sub Category: Cutter

Model Year: 1977

Year Built: 1977

Country: United States

Coast Guard #: 589430

Dimensions

LOA: 37' 0" (11.28m)

LWL: 27' 9" (8.46m)

Beam: 10' 10" (3.30m)

Clearance: 48' 6" (14.78m)

Speed, Capacities and Weight

Displacement: 16000 Pounds

Water Capacity: 100 Gallons

Holding Tank: 25 Gallons

Fuel Capacity: 28 Gallons

Accommodations

Total Cabins: 1

Total Berths: 4

Sleeps: 5

Total Heads: 1

Hull and Deck Information

Hull Material: Fiberglass

Deck Material: Fiberglass Sandwich

Hull Configuration: Monohull

Hull Finish: Aluminum

Hull Designer: W.I.B. Crealock

Engine Information

Engines: 1

Manufacturer: Yanmar

Model: 3YM30

Engine Type: Sail Drive

Fuel Type: Diesel

DETAILED INFORMATION

Features

Accommodations

Forward stateroom: Starting forward, access to the chain locker is through doors at the forward end of the berth. There is storage beneath the V berth and teak staving lining the hull sides. On starboard, there is a bureau unit with three drawers. Aft of that is the forward entry into the head. On port is a changing seat with storage beneath it and a double doored locker and shelf above and behind. Ventilation in here is from an overhead hatch and three opening ports.

Head: There are two entrances to the head; one from the forward cabin and one from the corridor. The counter and sink are along the hullside, with a locker beneath it and a sliding-door cabinet above. The head is slightly to the left. An opening port and a dorade vent provide ventilation to this space.

Saloon: The saloon features traditional opposing straight settees with a drop leaf table on centerline. Both settees have storage beneath and behind them. The starboard settee has fiddled shelves above and behind it, while the port side has a wet locker at the forward end with a fiddled shelf and a small locker above it. Aft and above the settee are fiddled shelves, with a locker at the aft end. There are two fixed lights, two opening ports and an overhead hatch.

Nav station: Located on port and aft of the settee, the nav table has plenty of space for chart books and lots of storage under the lid. Beneath there are three drawers; there is a fiddled shelf along the hull. There is a fixed light over the nav; the quarter berth cushion serves as the nav seat.

Galley: The galley is on starboard at the base of the companionway. Along the hullside is the gimbaled stove, with four drawers aft of that. Aft of the drawers is the icebox, with 12v: refrigeration and a freezer box. Along the hull, there is sliding door storage above the stove and a dish organizer. On the aft end of the galley and to the right of the icebox are two deep stainless steel sinks. There is a locker below the sink, while above as well as behind the countertop and icebox is more sliding door storage.

Galley

- Three burner LPG stove with oven (Stove not functioning; believed to be solenoid issue)
- Stove cover
- Trident LPG control
- 6# LPG tanks (2)
- 20# LPG tank
- Ice box with Adler Barbour 12v refrigeration (needs recharging)
- Double stainless steel sink
- Hot/cold pressure water mixer

- Fresh water foot pump
- Salt water foot pump
- Spice racks

Head

- Lavac manual head (needs service)
- 25 gallon holding tank
- Single sink
- Hot & cold water mixer with pull-out shower wand
- Teak shower grate
- Electric shower sump (needs to be re-installed)
- Mirror

Water Systems

- 6-gallon water heater
- Forward 45 gal. and center 55 gal. water tanks removed, welded and pressure tested ('13)
- Electric bilge pump
- Whale manual bilge pump in cockpit

Hull and Deck

- Fin keel with skeg hung rudder
- Interprotect 2000 barrier coat ('05)
- Double stainless steel anchor roller
- Separate chain lockers accessed from below deck
- 45# CQR anchor (needs chain)
- 25# CQR anchor (needs chain) w/250' of nylon rode
- Simpson Lawrence Horizon 1500 electric anchor windlass (rebuilt '14)
- Windlass remote at helm
- Danforth stern anchor stowed on the stern rail mount
- Bulwark mounted 30" stanchions with double stainless steel lifelines
- Port and starboard boarding gates
- Mast safety bars
- Dorades (2)
- Dodger and bimini frames

Sails and Rigging

- Lefiell single spreader deck stepped aluminum mast on the tabernacle
- Mast and boom removed and Awlgrippped in 2000
- Storm trysail track on mast
- Harken roller furler (needs furling line)

- Removable inner forestay with Hyfield lever
- Running backstays
- Forespar whisker pole
- Adjustable whisker pole track and car on mast
- Adjustable Genoa track cars
- Harken mainsheet track and car
- Mechanical boom vang
- Standing and running rigging replaced by Pacific Seacraft ('15)
- Mechanical adjustable backstay
- Lazy Jacks
- External halyards
- Spinnaker halyards (2)
- Spare main halyard
- Courtesy flag halyard
- Lewmar #6 winch for furler
- Bariant #10 halyard winch on mast
- Bariant #18 halyard winches on mast (2)
- Bariant #21 staysail sheet winches on housetop (2)
- Bariant #18 mainsheet winch on housetop
- Bariant #27 two speed self-tailing primary winches

Engine and Machinery

- Yanmar 3YM30 28HP engine and SD20 sail drive ('14)
- Engine needs detailing and touch-up paint
- Cori 16" 2 blade folding prop ('14)
- Belts & impeller replaced ('16)
- Engine starting harness rewired ('16)
- Racor fuel filter
- Edson pedestal with cable steering system
- Wood steering wheel with stainless steel spokes
- Single lever throttle control
- Ritchie compass

Electrical

- 30A shore power connection and cord
- KISS wind generator
- Kyocera 85W solar panels (3)
- Blue Sky solar boost regulator
- Six lead acid batteries ('15)
- Link 1000 battery monitor

Electronics

- Autohelm 4000 wheel autopilot
- Garmin EchoMap chart plotter
- Wind and depth instruments are inop
- ICOM M-710 SSB radio
- Insulated backstay antenna
- ICOM M422 VHF radio
- Stereo
- Cockpit speakers

Other Equipment

- Monitor self-steering vane
- Rod holders
- Starboard cup/binocular holder
- Achilles 9'6" dinghy ('02; fair condition)
- Honda 8HP outboard motor
- Outboard motor pad
- Stainless steel swim ladder

Exclusions

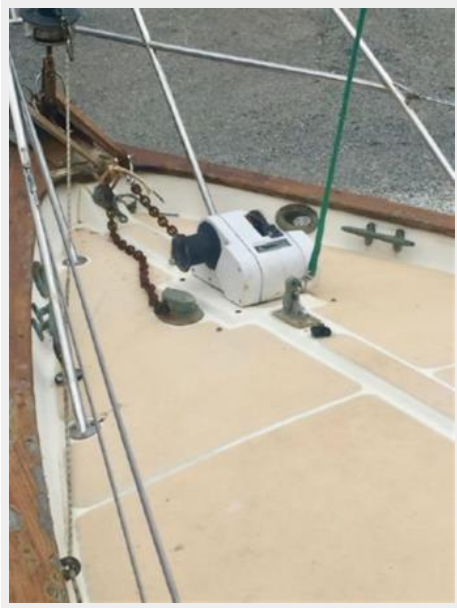
Owner's personal belongings.

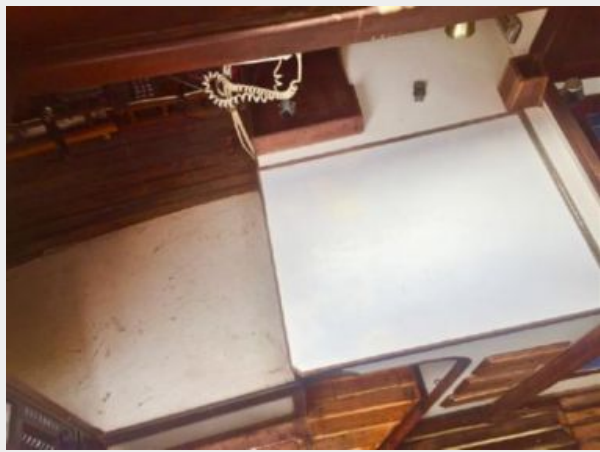
Disclaimer

The Company offers the details of this vessel or yacht in good faith but cannot guarantee or warrant the accuracy of this information nor warrant the condition of the vessel. A buyer should instruct his representatives, agents, or his surveyors, to investigate such details as the buyer desires validated. This vessel or yacht is offered subject to prior sale, price change, or withdrawal without notice.

PHOTOS











CONTACTS

Andrey Shestakov, leading yacht broker of the sales department of Shestakov Yacht Sales Inc. Shestakov Yacht Sales Inc., the official representative of the Miami/Fort Lauderdale FL headquarters.

Contact details

Email: andrey@shestakovyachtsales.com

Web: shestakovyachtsales.com/en/

Telephones

USA: +1(954)274-4435

Office hours

Monday – Saturday: **9:00 - 21:00** EDT

Sunday: **closed**

Address



Harbour Towne Marina, 850 NE 3rd St,
STE 213, Dania, FL 33004