

CUTLASS — PACIFIC SEACRAFT



Судостроитель: PACIFIC SEACRAFT

Длина общая: 37' 0" (11.28m)

Год постройки: 1977

Ширина: 10' 10" (3.30m)

Модель: Крейсерская яхта

Цена: ЦЕНА ЯХТЫ ПО ЗАПРОСУ

Местонахождение: United States

Купить **CUTLASS — PACIFIC SEACRAFT** а также выбрать подходящую вам яхту из нашего каталога яхт вам поможет опытный яхтенный брокер Андрей Шестаков. На сегодняшний день компания **Shestakov Yacht Sales Inc.** имеет большое количество яхт в собственном списке продаж, а также тесно сотрудничает со всеми крупными яхтенными производителями по всему миру.

Для того чтобы купить яхту **CUTLASS — PACIFIC SEACRAFT** а также проконсультироваться по любому вопросу связанному с покупкой, продажей, чартером яхт позвоните по телефону **+7(918)465-66-44**.

ОГЛАВЛЕНИЕ

ОГЛАВЛЕНИЕ	2
ХАРАКТЕРИСТИКИ	3
Обзор	3
Основная информация	3
Размеры	3
Скорость, вместимость и масса	4
Размещение	4
Корпус и палуба	4
Информация о двигателе	4
ПОДРОБНОЕ ОПИСАНИЕ	5
Features	5
Исключения	8
Отказ от ответственности	8
ФОТОГРАФИИ	9
КОНТАКТЫ	14
Контактная информация	14
Телефоны	14
Время работы	14
Адрес	14

ХАРАКТЕРИСТИКИ

Обзор

Built in the US by Cruising Consultants of Southern California, the original Crealock 37 design by W.I.B Crealock was introduced in 1977 and built with the same solid hull construction, beautiful lines and sailing performance, of her Pacific Seacraft sisters to follow. They built sixteen of them from 1977 until 1979.

In 1980 Pacific Seacraft purchased the molds and began steady production of the model. Now, 38 years later, you can still purchase a Pacific Seacraft 37. They are known as high-quality bluewater voyagers and you will find them in harbors all around the world.

Our offering, Cutlass, has had some improvements to her in the last few years:

- Repowered and a new prop in 2014
- Wire life lines replaced in 2015
- Standing rigging replaced at Pacific Seacraft in 2015
- Batteries replaced in 2015

The current owner bought her and spent about 6 years cruising the East Coast. Due to some personal issues, she is in need of some attention. As such, he is flexible on price. Her bones are good, she just needs someone who has the time to bring her back to her former self. They are great bluewater boats!

Основная информация

Тип судна: Крейсерская яхта

Подкатегория: Cutter

Модельный год: 1977

Год постройки: 1977

Страна: United States

Номер регистрации в береговой охране: 589430

Размеры

Длина общая: 37' 0" (11.28m)

Длина по ватерлинии: 27' 9" (8.46m)

Ширина: 10' 10" (3.30m)

Трапы: 48' 6" (14.78m)

Скорость, вместимость и масса

Водоизмещение: 16000 Pounds

Вместимость воды: 100 Gallons

Вместимость сточного бака: 25 Gallons

Объем топливного бака: 28 Gallons

Размещение

Всего кают: 1

Всего коек: 4

Спальные места: 5

Всего ком. состава: 1

Корпус и палуба

Материал корпуса: Fiberglass

Материал палубы: Fiberglass Sandwich

Комплектация корпуса: Monohull

Отделка корпуса: Aluminum

Дизайнер корпуса: W.I.B. Crealock

Информация о двигателе

Двигатели: 1

Производитель: Yanmar

Модель: 3YM30

Тип двигателя: Sail Drive

Тип топлива: Diesel

ПОДРОБНОЕ ОПИСАНИЕ

Features

Accommodations

Forward stateroom: Starting forward, access to the chain locker is through doors at the forward end of the berth. There is storage beneath the V berth and teak staving lining the hull sides. On starboard, there is a bureau unit with three drawers. Aft of that is the forward entry into the head. On port is a changing seat with storage beneath it and a double doored locker and shelf above and behind. Ventilation in here is from an overhead hatch and three opening ports.

Head: There are two entrances to the head; one from the forward cabin and one from the corridor. The counter and sink are along the hullside, with a locker beneath it and a sliding-door cabinet above. The head is slightly to the left. An opening port and a dorade vent provide ventilation to this space.

Saloon: The saloon features traditional opposing straight settees with a drop leaf table on centerline. Both settees have storage beneath and behind them. The starboard settee has fiddled shelves above and behind it, while the port side has a wet locker at the forward end with a fiddled shelf and a small locker above it. Aft and above the settee are fiddled shelves, with a locker at the aft end. There are two fixed lights, two opening ports and an overhead hatch.

Nav station: Located on port and aft of the settee, the nav table has plenty of space for chart books and lots of storage under the lid. Beneath there are three drawers; there is a fiddled shelf along the hull. There is a fixed light over the nav; the quarter berth cushion serves as the nav seat.

Galley: The galley is on starboard at the base of the companionway. Along the hullside is the gimballed stove, with four drawers aft of that. Aft of the drawers is the icebox, with 12v: refrigeration and a freezer box. Along the hull, there is sliding door storage above the stove and a dish organizer. On the aft end of the galley and to the right of the icebox are two deep stainless steel sinks. There is a locker below the sink, while above as well as behind the countertop and icebox is more sliding door storage.

Galley

- Three burner LPG stove with oven (Stove not functioning; believed to be solenoid issue)
- Stove cover
- Trident LPG control
- 6# LPG tanks (2)
- 20# LPG tank
- Ice box with Adler Barbour 12v refrigeration (needs recharging)
- Double stainless steel sink
- Hot/cold pressure water mixer

- Fresh water foot pump
- Salt water foot pump
- Spice racks

Head

- Lavac manual head (needs service)
- 25 gallon holding tank
- Single sink
- Hot & cold water mixer with pull-out shower wand
- Teak shower grate
- Electric shower sump (needs to be re-installed)
- Mirror

Water Systems

- 6-gallon water heater
- Forward 45 gal. and center 55 gal. water tanks removed, welded and pressure tested ('13)
- Electric bilge pump
- Whale manual bilge pump in cockpit

Hull and Deck

- Fin keel with skeg hung rudder
- Interprotect 2000 barrier coat ('05)
- Double stainless steel anchor roller
- Separate chain lockers accessed from below deck
- 45# CQR anchor (needs chain)
- 25# CQR anchor (needs chain) w/250' of nylon rode
- Simpson Lawrence Horizon 1500 electric anchor windlass (rebuilt '14)
- Windlass remote at helm
- Danforth stern anchor stowed on the stern rail mount
- Bulwark mounted 30" stanchions with double stainless steel lifelines
- Port and starboard boarding gates
- Mast safety bars
- Dorades (2)
- Dodger and bimini frames

Sails and Rigging

- Lefiell single spreader deck stepped aluminum mast on the tabernacle
- Mast and boom removed and Awlgrippped in 2000
- Storm trysail track on mast
- Harken roller furler (needs furling line)

- Removable inner forestay with Hyfield lever
- Running backstays
- Forespar whisker pole
- Adjustable whisker pole track and car on mast
- Adjustable Genoa track cars
- Harken mainsheet track and car
- Mechanical boom vang
- Standing and running rigging replaced by Pacific Seacraft ('15)
- Mechanical adjustable backstay
- Lazy Jacks
- External halyards
- Spinnaker halyards (2)
- Spare main halyard
- Courtesy flag halyard
- Lewmar #6 winch for furler
- Bariant #10 halyard winch on mast
- Bariant #18 halyard winches on mast (2)
- Bariant #21 staysail sheet winches on housetop (2)
- Bariant #18 mainsheet winch on housetop
- Bariant #27 two speed self-tailing primary winches

Engine and Machinery

- Yanmar 3YM30 28HP engine and SD20 sail drive ('14)
- Engine needs detailing and touch-up paint
- Cori 16" 2 blade folding prop ('14)
- Belts & impeller replaced ('16)
- Engine starting harness rewired ('16)
- Racor fuel filter
- Edson pedestal with cable steering system
- Wood steering wheel with stainless steel spokes
- Single lever throttle control
- Ritchie compass

Electrical

- 30A shore power connection and cord
- KISS wind generator
- Kyocera 85W solar panels (3)
- Blue Sky solar boost regulator
- Six lead acid batteries ('15)
- Link 1000 battery monitor

Electronics

- Autohelm 4000 wheel autopilot
- Garmin EchoMap chart plotter
- Wind and depth instruments are inop
- ICOM M-710 SSB radio
- Insulated backstay antenna
- ICOM M422 VHF radio
- Stereo
- Cockpit speakers

Other Equipment

- Monitor self-steering vane
- Rod holders
- Starboard cup/binocular holder
- Achilles 9'6" dinghy ('02; fair condition)
- Honda 8HP outboard motor
- Outboard motor pad
- Stainless steel swim ladder

Исключения

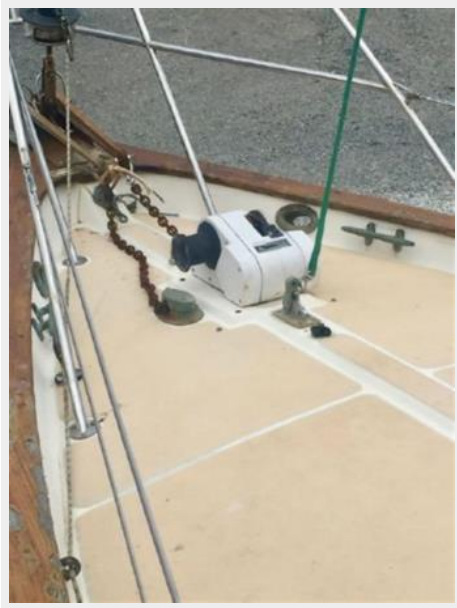
При продаже яхты исключаются личные вещи владельца.

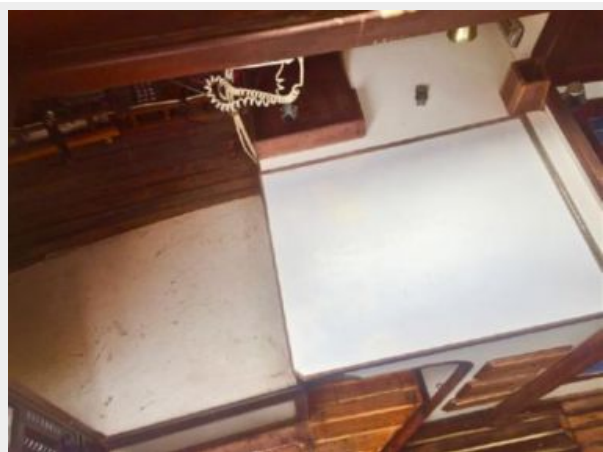
Отказ от ответственности

Компания предоставляет описание судна или яхты добросовестно, но не может гарантировать точность этой информации, а также не ручается за техническое состояние. Покупатель должен проинструктировать своих агентов или оценщиков исследовать представленную информацию более подробно, по собственному желанию. Продажа судна или яхты, изменение цены или снятие с продажи будет происходить без предварительного уведомления.

ФОТОГРАФИИ











КОНТАКТЫ

Андрей Шестаков (Andrey Shestakov) – ведущий яхтенный брокер отдела продаж яхт и судов компании Shestakov Yacht Sales Inc. Официальный представитель Shestakov Yacht Sales Inc. для русскоговорящих клиентов в центральном офисе компании в Майами/Форт Лодердейл/Флорида/США.

Контактная информация

Email: andrey@shestakovyachtsales.com

Web: shestakovyachtsales.com

Телефоны

Краснодарский край: **+7(918)465-66-44**

США, Майами, Флорида: **+1(954)274-4435**

Время работы

Понедельник – Суббота: **9:00 - 21:00**
EDT

Воскресенье: **Закрито**

Адрес



Harbour Towne Marina, 850 NE 3rd St,
STE 213, Dania, FL 33004