

## SPREE — SUNBEAM



**Builder:** SUNBEAM

**Year Built:** 1989

**Model:** Cruising Sailboat

**Price:** PRICE ON APPLICATION

**Location:** United States

**LOA:** 37' 0" (11.28m)

**Beam:** 11' 4" (3.45m)

**Min Draft:** 4' 8" (1.42m)

Our experienced yacht broker, Andrey Shestakov, will help you choose and buy a yacht that best suits your needs **SPREE — SUNBEAM** from our catalogue. Presently, at Shestakov Yacht Sales Inc., we have a wide variety of yachts available on our sale's list. We also work in close contact with all the big yacht manufacturers from all over the world.

If you would like to buy a yacht **SPREE — SUNBEAM** or would like help answering any questions concerning purchasing, selling or chartering a yacht, please call **+1(954)274-4435**

---

# TABLE OF CONTENTS

---

TABLE OF CONTENTS	2
SPECIFICATIONS	3
Overview	3
Basic Information	3
Dimensions	3
Speed, Capacities and Weight	4
Accommodations	4
Hull and Deck Information	4
Engine Information	4
DETAILED INFORMATION	5
Features	5
Exclusions	9
Disclaimer	9
PHOTOS	10
Sunbeam 34C layout and sail plan	10
Experience you can trust	17
CONTACTS	18
Contact details	18
Telephones	18
Office hours	18
Address	18

---

# SPECIFICATIONS

---

## Overview

---

Built in Salzburg, Austria continuously since 1952 by the Schöchgl family, Sunbeam yachts are all handcrafted and custom built. In 1961 Schöchgl Yachtbau became one of the first companies in the world to build yachts using fiberglass.

Wood joinery workers since 1838, the family is recognized for their high quality of build and finish. Sunbeam is well known and well respected in Europe and the boats are still being built by the Schöchgl family - (3rd generation) in a new production facility built in 2001.

Built to strict German Lloyds standards, Sunbeams are purpose-built for short and single-handed sailing and designed to withstand the rigors of the North and Baltic Seas. There are many similarities to their Scandinavian counterparts Hallberg Rassy, Malo, Najad, Swan and Sweden Yachts.

Our offering, SPREE, has served her owners well. A 34S model, she has the factory extended swim platform modification, which gives her an overall length of 37'.

As life and family plans march on, with sadness they have decided it is to part with her. If you are in the market for a boat that can be enjoyed on the Chesapeake or coastal waters AND safely cross any ocean out there should you choose, then you owe it to yourself to take a look at SPREE.

Call and make an appointment to see her today!

---

## Basic Information

---

**Category:** Cruising Sailboat

**Sub Category:** Sloop

**Model Year:** 1989

**Year Built:** 1989

**Country:** United States

**Coast Guard #:** 1196756

**Vessel Top:** Bimini Top

---

## Dimensions

---

**LOA:** 37' 0" (11.28m)

**LWL:** 28' 0" (8.53m)

**Beam:** 11' 4" (3.45m)

**Min Draft:** 4' 8" (1.42m)

---

## Speed, Capacities and Weight

---

**Displacement:** 13000 Pounds

**Holding Tank:** 16 Gallons

**Fuel Capacity:** 37 Gallons

---

## Accommodations

---

**Total Cabins:** 2

**Total Berths:** 3

**Sleeps:** 6

**Total Heads:** 1

---

## Hull and Deck Information

---

**Hull Material:** Fiberglass

**Deck Material:** Teak over Fiberglass

**Hull Configuration:** Monohull

**Hull Finish:** Stainless Steel

---

## Engine Information

---

**Engines:** 1

**Manufacturer:** Yanmar

**Model:** 3GM30F

**Engine Type:** Sail Drive

**Fuel Type:** Diesel

---

# DETAILED INFORMATION

---

## Features

---

### Accommodations

**Forward stateroom:** The V-berth is 78" x 80", with a removable insert filler. Beneath the berth is two storage areas and the fresh water tank. Along either hull side are cubbies with fiddled shelves above them. Lighting and ventilation are provided by one reading light, one overhead light and an overhead hatch. Headroom in here is 6'2".

**Head:** The head is located forward on starboard. As you enter, the head is to your left. To the right of that is a molded self-draining countertop sink with a soap dish. There is a cubby beneath the sink and 3 mirrored medicine cabinet doors above. There is a sliding door for privacy, a pull-out shower wand and a teak shower grate for bathing. Lighting and ventilation are provided by one overhead light and one overhead hatch. Headroom is 6'2". Across the corridor from the head is a large hanging locker with a shelf above.

**Saloon:** There are 2 barrel back upholstered armchairs on port, with a small fiddled table between them and a liquor locker beneath. Above and behind the barrel back chairs are three shelves with fiddles; above those are double door lockers on either end. The stereo system and a small storage cubby are between the lockers and another fiddled shelf above that. On starboard is a U-shaped dinette, with storage beneath all of the seats. Above and behind it are four fiddled shelves, with double door lockers at either end. The dinette will comfortably seat four and can convert to a large 6'7" long double berth. The centerline table has drop leaves and storage inside it. When fully opened you can comfortably seat six or seven people. Headroom in the saloon is 6'2". There are continuous grab rails along either house side. Light and ventilation is from a large overhead hatch, eight fixed lights, an opening port and two overhead lights.

**Nav station:** The nav station is located on port at the base of the companionway. The Nav top is large enough for a chart book and has plenty of storage room inside. There are four drawers beneath the nav top and storage beneath the padded nav seat. Outboard are electrical controls and a cubby shelf with fiddles. Headroom is 6'.

**Galley:** The L-shaped galley is located at the base of the companionway on starboard. There is a double sink oriented forward with a locker and tip-out trash bin below it. Outboard of the sink is an ice box with 12v refrigeration. Next aft and along the hull is a three-burner stove and oven. To the right of the stove are three utensil drawers; below both is a sliding door storage locker for pots and pans. Above and behind the countertop is a mug organizer and sliding door shelf storage. Above that are 3 drop-front lockers with shelf space and dish organizers. At the aft end of the galley is a double door wet locker. Headroom is 6'. There is one opening port and one overhead light in this area.

**Aft stateroom:** The aft stateroom has plenty of space to stand and change and a surprisingly

large berth, which is 78" x 42" x 68". Entry is on port and aft of the nav station. Mahogany staving runs the length of the berth along the hull side, with three mahogany cubbies above that. There is a hanging locker with a fiddled night stand below it and a large locker beneath that. With 5'11" headroom, there are three opening ports and an overhead light in this cabin.

- All bulkheads and cabinetry is laminated to the hull for superior strength
- Handcrafted Sapele mahogany interior
- Mahogany & holly cabin sole
- Curtains throughout
- Paneled door lockers with brass push button latches
- Teal/blue upholstery with button trim
- Sapele mahogany staving along all hull sides

## Galley

- Double stainless-steel sink
- Hot/cold pressure water
- Whale freshwater hand pump
- Icebox with Isotherm 12V refrigerator ('15)
- Icebox drain pump ('14)
- Eno 3-burner LPG stove with oven
- 10lb LPG bottle in dedicated locker
- Truma LPG solenoid switch
- Tip-out trash bin

## Head

- Molded countertop with integral sink
- Pull-out hot/cold water mixer with shower wand
- Jabsco manual head
- Macerator for overboard discharge

## Water Systems

- Stainless steel water heater
- ParMax 3 fresh water pump ('14)
- Electric bilge pump
- Whale manual bilge pump

## Hull and Deck

- Shoal draft winged bulb keel
- Skeg hung rudder
- Bottom paint ('18)

- Stainless steel bow pulpit with teak seat
- Single stainless-steel bow roller
- Stainless steel bow strike plate
- Plow anchor with 5/16" chain
- Lofrans Kobra electric windlass with remote
- Topsides painted with Awlcraft 2000 ('11)
- Solid fiberglass deck with teak overlay
- Large mooring cleats (6)
- Stainless steel wire jack lines
- Teak grab rails
- Cap rail mounted lifeline stations with double wire
- Aluminum rub strake with rubber inset
- Four opening hatches ('12)
- Hard dodger with canvas dodger extension
- Stern swim scoop extension with port and starboard lockers
- Stainless steel swim ladder
- Retractable stern gangway
- Teak cockpit sole and seating
- Teak cockpit table
- Teak drink holder

## Sails and Rigging

- Profurl roller furler
- Mast mounts spinnaker pole track and adjustable car
- Deck stepped mast with tabernacle
- 1x19 stainless steel wire standing rigging
- In-boom roller furling main
- Rigid boom vang
- Mid-boom mounted main sheet
- All lines led are aft to the cockpit
- Genoa tracks are recessed flush with the teak decking
- Enkes #26 two speed self-tailing primary winches
- Enkes #77389 secondary winches
- Anderson #12 two speed self-tailing house top winches (2)
- Easy-lock line clutches (6)
- Jam cleats (4)
- Spinnaker pole
- Fully battened laminate in-boom main ('04)
- 150% Dacron Genoa ('03)
- Drifter (never flown by current owner)
- Sunbrella sun cover on Genoa replaced ('15)

## Engine and Machinery

- Yanmar 3GM30 freshwater cooled engine with 2849 hours
- Yanmar sail drive with 2 blade prop
- Stainless steel fuel tank
- Racor 500 fuel filter
- Whitlock Cobra rod steering pedestal
- Single lever throttle control
- Exhaust elbow replaced ('13)
- Head gasket replaced and valves adjusted ('13)
- Injector pump and injectors rebuilt ('13)
- Engine compartment sound proof insulation replaced ('14)
- VPO hour meter
- VPO fuel tank gauge
- Espar diesel cabin heater

## Electrical

“Spree” had an extensive electrical system review and upgraded over the winter of '17-'18. The work was done by Yacht Electronics Systems in Annapolis, arguably the best electrical people in town. The entire system was cleaned up, removing, rerouting and replacing wiring as required.

- 30A Hubbell shore power connector and cord
- Blu-Sea systems 120V panel with volt meter ('14)
- 120V GFCI receptacle at companionway
- Blue Sea Systems 12V DC distribution panel (2)
- Decca Group 34 AGM starting battery ('14)
- Two Decca AGM Group 31 House batteries ('18)
- Blue Sea Systems battery selector switch ('18)
- Guest 10A battery charger
- Balmar 70A alternator ('14)
- Balmar ARS-5 regulator
- Blu-Sea Systems automatic charging relay
- SunPower 50W solar panel
- Smart-Solar charge regulator
- Xantrax Link Lite battery monitor ('18)
- 12v & USB connections at nav

## Electronics

- Raymarine ST4000 Wheel auto pilot with ST6002 control head ('12)
- Raymarine E80 Chart plotter and radar ('07)
- Raymarine ST60+ Wind ('07)
- Raymarine ST60+ Depth ('07)
- Raymarine ST60+ Speed ('07)



- Raymarine GyroPlus 2 Smart Heading Sensor (not installed)
- Raymarine 218 VHF radio ('07)
- Phillips DC 933 AM/FM/CD
- Saloon speakers (2)

## Other Equipment

- Fenders and dock lines
- PFDs
- Teak outboard mounting pad
- Life Sling 2 MOB system
- Jim Buoy horseshoe ring
- Bosun's seat
- Brass ships clock
- Brass barometer
- Brass temp/humidity
- Wind scoop

## Exclusions

Owner's personal effects and any items not specifically described in this listing

---

## Exclusions

Owner's personal belongings.

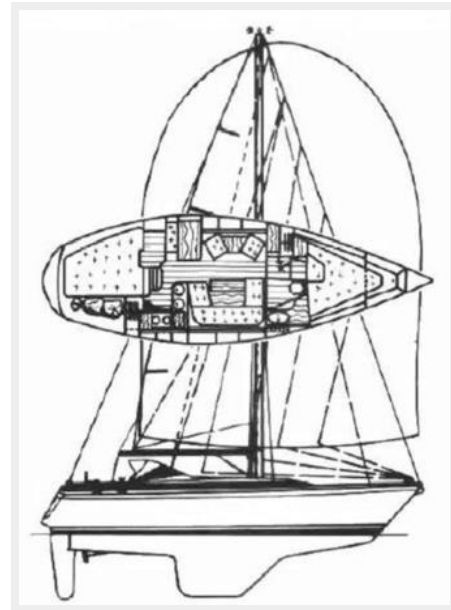
---

## Disclaimer

The Company offers the details of this vessel or yacht in good faith but cannot guarantee or warrant the accuracy of this information nor warrant the condition of the vessel. A buyer should instruct his representatives, agents, or his surveyors, to investigate such details as the buyer desires validated. This vessel or yacht is offered subject to prior sale, price change, or withdrawal without notice.

# PHOTOS

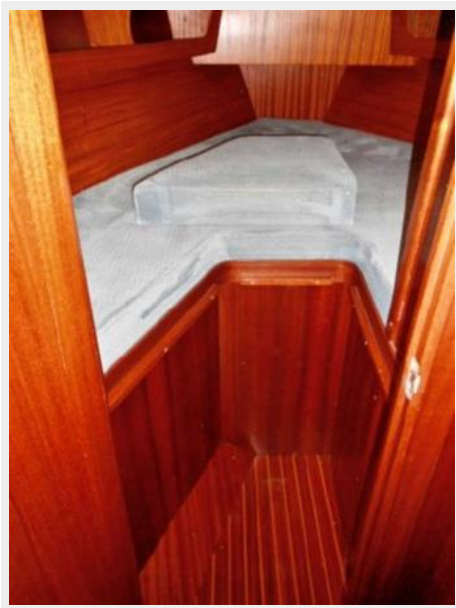
## Sunbeam 34C layout and sail plan



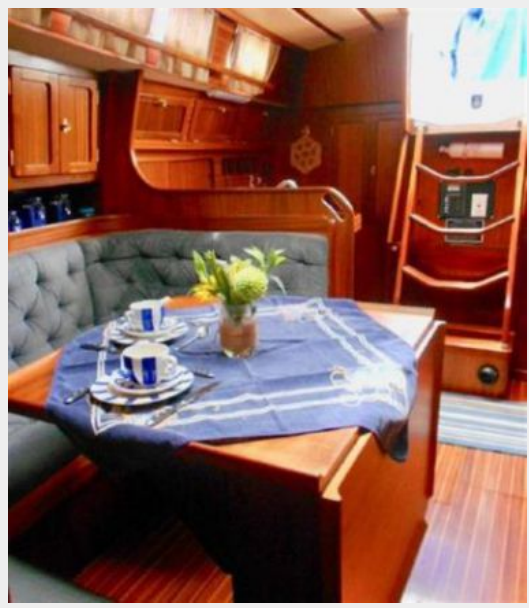


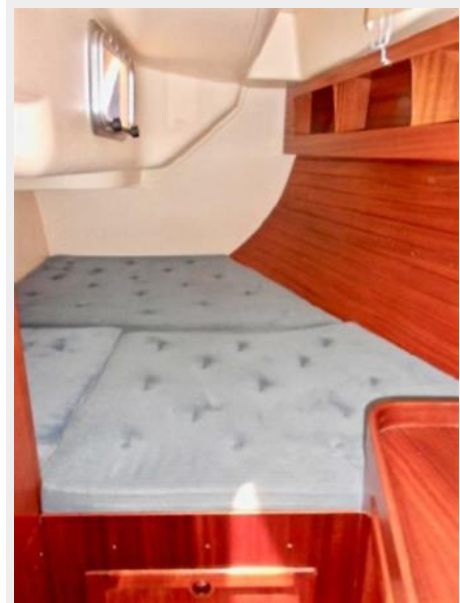
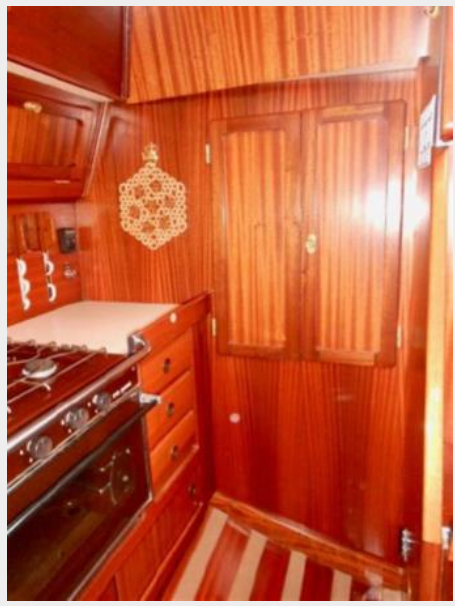




















**Experience you can trust**



# CONTACTS

---

Andrey Shestakov, leading yacht broker of the sales department of Shestakov Yacht Sales Inc. Shestakov Yacht Sales Inc., the official representative of the Miami/Fort Lauderdale FL headquarters.

## Contact details

---

Email: [andrey@shestakovyachtsales.com](mailto:andrey@shestakovyachtsales.com)

Web: [shestakovyachtsales.com/en/](http://shestakovyachtsales.com/en/)

## Telephones

---

USA: +1(954)274-4435

## Office hours

---

Monday – Saturday: **9:00 - 21:00** EDT

Sunday: **closed**

## Address

---



Harbour Towne Marina, 850 NE 3rd St,  
STE 213, Dania, FL 33004