

SPREE — SUNBEAM



Судостроитель: [SUNBEAM](#)

Год постройки: 1989

Модель: Крейсерская яхта

Цена: **ЦЕНА ЯХТЫ ПО ЗАПРОСУ**

Местонахождение: United States

Длина общая: 37' 0" (11.28m)

Ширина: 11' 4" (3.45m)

Мин. осадка: 4' 8" (1.42m)

Купить **SPREE — SUNBEAM** а также выбрать подходящую вам яхту из нашего каталога яхт вам поможет опытный яхтенный брокер Андрей Шестаков. На сегодняшний день компания **Shestakov Yacht Sales Inc.** имеет большое количество яхт в собственном списке продаж, а также тесно сотрудничает со всеми крупными яхтенными производителями по всему миру.

Для того чтобы купить яхту **SPREE — SUNBEAM** а также проконсультироваться по любому вопросу связанному с покупкой, продажей, чартером яхт позвоните по телефону **+7(918)465-66-44**.

ОГЛАВЛЕНИЕ

| | |
|----------------------------------|----|
| ОГЛАВЛЕНИЕ | 2 |
| ХАРАКТЕРИСТИКИ | 3 |
| Обзор | 3 |
| Основная информация | 3 |
| Размеры | 4 |
| Скорость, вместимость и масса | 4 |
| Размещение | 4 |
| Корпус и палуба | 4 |
| Информация о двигателе | 4 |
| ПОДРОБНОЕ ОПИСАНИЕ | 5 |
| Features | 5 |
| Исключения | 9 |
| Отказ от ответственности | 9 |
| ФОТОГРАФИИ | 10 |
| Sunbeam 34C layout and sail plan | 10 |
| Experience you can trust | 17 |
| КОНТАКТЫ | 18 |
| Контактная информация | 18 |
| Телефоны | 18 |
| Время работы | 18 |
| Адрес | 18 |

ХАРАКТЕРИСТИКИ

Обзор

Built in Salzburg, Austria continuously since 1952 by the Schöchl family, Sunbeam yachts are all handcrafted and custom built. In 1961 Schöchl Yachtbau became one of the first companies in the world to build yachts using fiberglass.

Wood joinery workers since 1838, the family is recognized for their high quality of build and finish. Sunbeam is well known and well respected in Europe and the boats are still being built by the Schöchl family - (3rd generation) in a new production facility built in 2001.

Built to strict German Lloyds standards, Sunbeams are purpose-built for short and single-handed sailing and designed to withstand the rigors of the North and Baltic Seas. There are many similarities to their Scandinavian counterparts Hallberg Rassy, Malo, Najad, Swan and Sweden Yachts.

Our offering, SPREE, has served her owners well. A 34S model, she has the factory extended swim platform modification, which gives her an overall length of 37'.

As life and family plans march on, with sadness they have decided it is to part with her. If you are in the market for a boat that can be enjoyed on the Chesapeake or coastal waters AND safely cross any ocean out there should you choose, then you owe it to yourself to take a look at SPREE.

Call and make an appointment to see her today!

Основная информация

Тип судна: Крейсерская яхта

Подкатегория: Sloop

Модельный год: 1989

Год постройки: 1989

Страна: United States

Номер регистрации в береговой охране: 1196756

Верх: Bimini Top

Размеры

Длина общая: 37' 0" (11.28m)

Длина по ватерлинии: 28' 0" (8.53m)

Ширина: 11' 4" (3.45m)

Мин. осадка: 4' 8" (1.42m)

Скорость, вместимость и масса

Водоизмещение: 13000 Pounds

Вместимость сточного бака: 16 Gallons

Объем топливного бака: 37 Gallons

Размещение

Всего кают: 2

Всего коек: 3

Спальные места: 6

Всего ком. состава: 1

Корпус и палуба

Материал корпуса: Fiberglass

Материал палубы: Teak over Fiberglass

Комплектация корпуса: Monohull

Отделка корпуса: Stainless Steel

Информация о двигателе

Двигатели: 1

Производитель: Yanmar

Модель: 3GM30F

Тип двигателя: Sail Drive

Тип топлива: Diesel

ПОДРОБНОЕ ОПИСАНИЕ

Features

Accommodations

Forward stateroom: The V-berth is 78" x 80", with a removable insert filler. Beneath the berth is two storage areas and the fresh water tank. Along either hull side are cubbies with fiddled shelves above them. Lighting and ventilation are provided by one reading light, one overhead light and an overhead hatch. Headroom in here is 6'2".

Head: The head is located forward on starboard. As you enter, the head is to your left. To the right of that is a molded self-draining countertop sink with a soap dish. There is a cubby beneath the sink and 3 mirrored medicine cabinet doors above. There is a sliding door for privacy, a pull-out shower wand and a teak shower grate for bathing. Lighting and ventilation are provided by one overhead light and one overhead hatch. Headroom is 6'2". Across the corridor from the head is a large hanging locker with a shelf above.

Saloon: There are 2 barrel back upholstered armchairs on port, with a small fiddled table between them and a liquor locker beneath. Above and behind the barrel back chairs are three shelves with fiddles; above those are double door lockers on either end. The stereo system and a small storage cubby are between the lockers and another fiddled shelf above that. On starboard is a U-shaped dinette, with storage beneath all of the seats. Above and behind it are four fiddled shelves, with double door lockers at either end. The dinette will comfortably seat four and can convert to a large 6'7" long double berth. The centerline table has drop leaves and storage inside it. When fully opened you can comfortably seat six or seven people. Headroom in the saloon is 6'2". There are continuous grab rails along either house side. Light and ventilation is from a large overhead hatch, eight fixed lights, an opening port and two overhead lights.

Nav station: The nav station is located on port at the base of the companionway. The Nav top is large enough for a chart book and has plenty of storage room inside. There are four drawers beneath the nav top and storage beneath the padded nav seat. Outboard are electrical controls and a cubby shelf with fiddles. Headroom is 6'.

Galley: The L-shaped galley is located at the base of the companionway on starboard. There is a double sink oriented forward with a locker and tip-out trash bin below it. Outboard of the sink is an ice box with 12v refrigeration. Next aft and along the hull is a three-burner stove and oven. To the right of the stove are three utensil drawers; below both is a sliding door storage locker for pots and pans. Above and behind the countertop is a mug organizer and sliding door shelf storage. Above that are 3 drop-front lockers with shelf space and dish organizers. At the aft end of the galley is a double door wet locker. Headroom is 6'. There is one opening port and one overhead light in this area.

Aft stateroom: The aft stateroom has plenty of space to stand and change and a surprisingly

large berth, which is 78" x 42" x 68". Entry is on port and aft of the nav station. Mahogany staving runs the length of the berth along the hull side, with three mahogany cubbies above that. There is a hanging locker with a fiddled night stand below it and a large locker beneath that. With 5'11" headroom, there are three opening ports and an overhead light in this cabin.

- All bulkheads and cabinetry is laminated to the hull for superior strength
- Handcrafted Sapele mahogany interior
- Mahogany & holly cabin sole
- Curtains throughout
- Paneled door lockers with brass push button latches
- Teal/blue upholstery with button trim
- Sapele mahogany staving along all hull sides

Galley

- Double stainless-steel sink
- Hot/cold pressure water
- Whale freshwater hand pump
- Icebox with Isotherm 12V refrigerator ('15)
- Icebox drain pump ('14)
- Eno 3-burner LPG stove with oven
- 10lb LPG bottle in dedicated locker
- Truma LPG solenoid switch
- Tip-out trash bin

Head

- Molded countertop with integral sink
- Pull-out hot/cold water mixer with shower wand
- Jabsco manual head
- Macerator for overboard discharge

Water Systems

- Stainless steel water heater
- ParMax 3 fresh water pump ('14)
- Electric bilge pump
- Whale manual bilge pump

Hull and Deck

- Shoal draft winged bulb keel
- Skeg hung rudder
- Bottom paint ('18)

- Stainless steel bow pulpit with teak seat
- Single stainless-steel bow roller
- Stainless steel bow strike plate
- Plow anchor with 5/16" chain
- Lofrans Kobra electric windlass with remote
- Topsides painted with Awlcraft 2000 ('11)
- Solid fiberglass deck with teak overlay
- Large mooring cleats (6)
- Stainless steel wire jack lines
- Teak grab rails
- Cap rail mounted lifeline stations with double wire
- Aluminum rub strake with rubber inset
- Four opening hatches ('12)
- Hard dodger with canvas dodger extension
- Stern swim scoop extension with port and starboard lockers
- Stainless steel swim ladder
- Retractable stern gangway
- Teak cockpit sole and seating
- Teak cockpit table
- Teak drink holder

Sails and Rigging

- Profurl roller furler
- Mast mounts spinnaker pole track and adjustable car
- Deck stepped mast with tabernacle
- 1x19 stainless steel wire standing rigging
- In-boom roller furling main
- Rigid boom vang
- Mid-boom mounted main sheet
- All lines led are aft to the cockpit
- Genoa tracks are recessed flush with the teak decking
- Enkes #26 two speed self-tailing primary winches
- Enkes #77389 secondary winches
- Anderson #12 two speed self-tailing house top winches (2)
- Easy-lock line clutches (6)
- Jam cleats (4)
- Spinnaker pole
- Fully battened laminate in-boom main ('04)
- 150% Dacron Genoa ('03)
- Drifter (never flown by current owner)
- Sunbrella sun cover on Genoa replaced ('15)

Engine and Machinery

- Yanmar 3GM30 freshwater cooled engine with 2849 hours
- Yanmar sail drive with 2 blade prop
- Stainless steel fuel tank
- Racor 500 fuel filter
- Whitlock Cobra rod steering pedestal
- Single lever throttle control
- Exhaust elbow replaced ('13)
- Head gasket replaced and valves adjusted ('13)
- Injector pump and injectors rebuilt ('13)
- Engine compartment sound proof insulation replaced ('14)
- VPO hour meter
- VPO fuel tank gauge
- Espar diesel cabin heater

Electrical

“Spree” had an extensive electrical system review and upgraded over the winter of '17-'18. The work was done by Yacht Electronics Systems in Annapolis, arguably the best electrical people in town. The entire system was cleaned up, removing, rerouting and replacing wiring as required.

- 30A Hubbell shore power connector and cord
- Blu-Sea systems 120V panel with volt meter ('14)
- 120V GFCI receptacle at companionway
- Blue Sea Systems 12V DC distribution panel (2)
- Decca Group 34 AGM starting battery ('14)
- Two Decca AGM Group 31 House batteries ('18)
- Blue Sea Systems battery selector switch ('18)
- Guest 10A battery charger
- Balmar 70A alternator ('14)
- Balmar ARS-5 regulator
- Blu-Sea Systems automatic charging relay
- SunPower 50W solar panel
- Smart-Solar charge regulator
- Xantrax Link Lite battery monitor ('18)
- 12v & USB connections at nav

Electronics

- Raymarine ST4000 Wheel auto pilot with ST6002 control head ('12)
- Raymarine E80 Chart plotter and radar ('07)
- Raymarine ST60+ Wind ('07)
- Raymarine ST60+ Depth ('07)
- Raymarine ST60+ Speed ('07)

- Raymarine GyroPlus 2 Smart Heading Sensor (not installed)
- Raymarine 218 VHF radio ('07)
- Phillips DC 933 AM/FM/CD
- Saloon speakers (2)

Other Equipment

- Fenders and dock lines
- PFDs
- Teak outboard mounting pad
- Life Sling 2 MOB system
- Jim Buoy horseshoe ring
- Bosun's seat
- Brass ships clock
- Brass barometer
- Brass temp/humidity
- Wind scoop

Exclusions

Owner's personal effects and any items not specifically described in this listing

Исключения

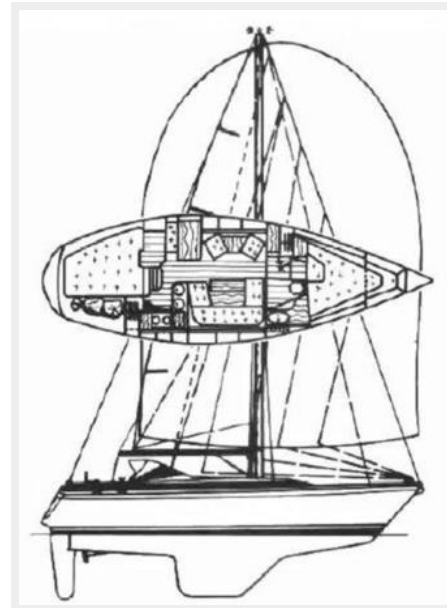
При продаже яхты исключаются личные вещи владельца.

Отказ от ответственности

Компания предоставляет описание судна или яхты добросовестно, но не может гарантировать точность этой информации, а также не ручается за техническое состояние. Покупатель должен проинструктировать своих агентов или оценщиков исследовать представленную информацию более подробно, по собственному желанию. Продажа судна или яхты, изменение цены или снятие с продажи будет происходить без предварительного уведомления.

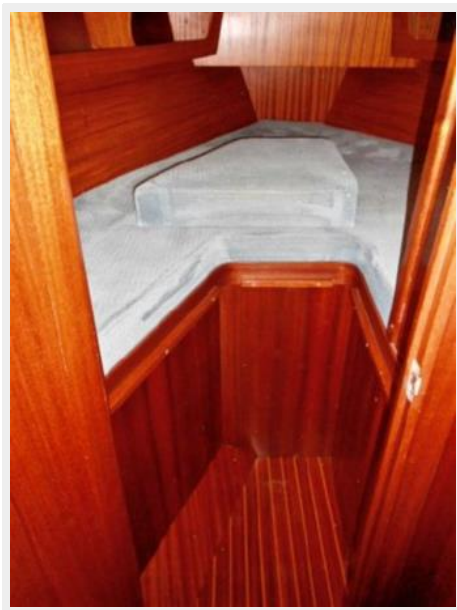
ФОТОГРАФИИ

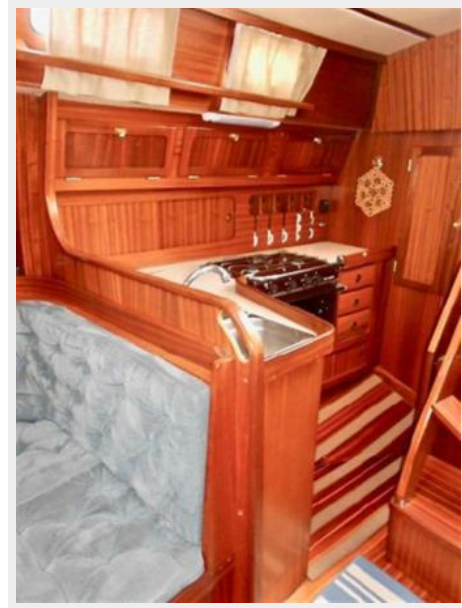
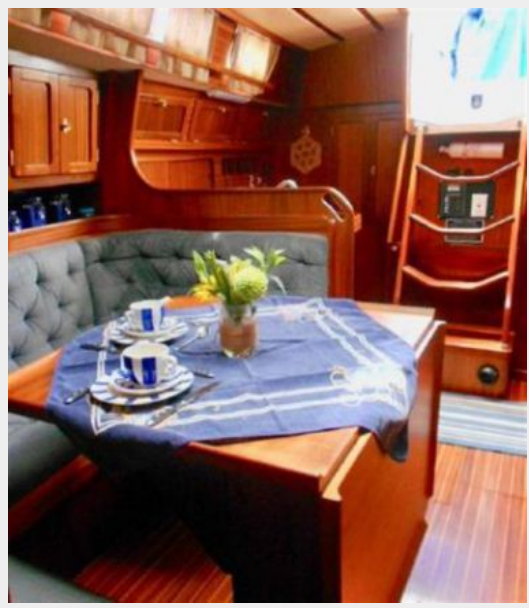
Sunbeam 34C layout and sail plan

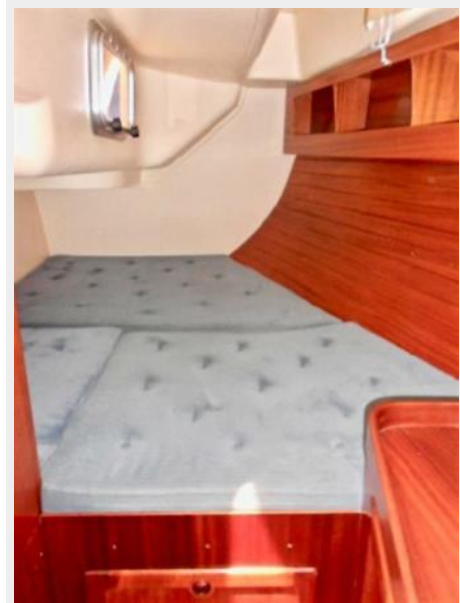
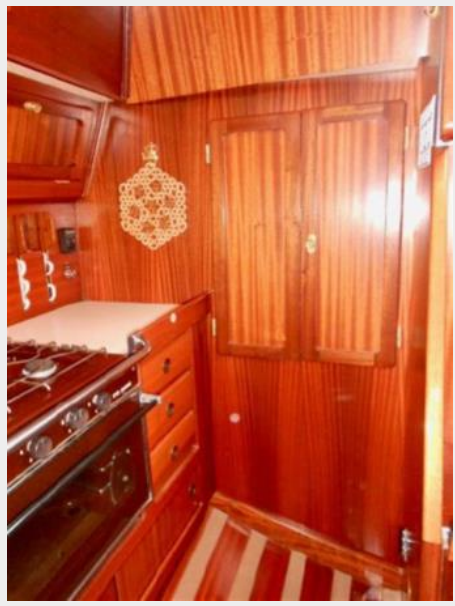
















Experience you can trust



КОНТАКТЫ

Андрей Шестаков (Andrey Shestakov) – ведущий яхтенный брокер отдела продаж яхт и судов компании Shestakov Yacht Sales Inc. Официальный представитель Shestakov Yacht Sales Inc. для русскоговорящих клиентов в центральном офисе компании в Майами/Форт Лодердейл/Флорида/США.

Контактная информация

Email: andrey@shestakovyachtsales.com

Web: shestakovyachtsales.com

Телефоны

Краснодарский край: **+7(918)465-66-44**

США, Майами, Флорида: **+1(954)274-4435**

Время работы

Понедельник – Суббота: **9:00 - 21:00**
EDT

Воскресенье: **Закрето**

Адрес



Harbour Towne Marina, 850 NE 3rd St,
STE 213, Dania, FL 33004