

SAINT OF CIRCUMSTANCE — TARTAN



Builder: TARTAN

Year Built: 2007

Model: Cruising Sailboat

Price: PRICE ON APPLICATION

Location: United States

LOA: 37' 0" (11.28m)

Beam: 12' 8" (3.86m)

Max Draft: 7' 3" (2.21m)

Our experienced yacht broker, Andrey Shestakov, will help you choose and buy a yacht that best suits your needs **Saint of Circumstance — TARTAN** from our catalogue. Presently, at Shestakov Yacht Sales Inc., we have a wide variety of yachts available on our sale's list. We also work in close contact with all the big yacht manufacturers from all over the world.

If you would like to buy a yacht **Saint of Circumstance — TARTAN** or would like help answering any questions concerning purchasing, selling or chartering a yacht, please call **+1(954)274-4435**

TABLE OF CONTENTS

TABLE OF CONTENTS	2
SPECIFICATIONS	4
Overview	4
Basic Information	4
Dimensions	5
Speed, Capacities and Weight	5
Accommodations	5
Hull and Deck Information	5
Engine Information	5
DETAILED INFORMATION	6
Features	6
Exclusions	9
Disclaimer	9
PHOTOS	10
Tartan 3700 - Mooring	10
At the Dock	10
Mooring	10
Companioway	11
Cover	16
Tartan 3700 Layout	16
Fairclough Cover	16
Resting Comfy!	16
On the hard	17
CONTACTS	18
Contact details	18
Telephones	18
Office hours	18
Address	18

SPECIFICATIONS

Overview

RECENT PRICE REDUCTION -- Make Offers!

SELLER WILL CONSIDER TRADES --Call with Trade-In!

The Tartan 3700 is one of Tartan's most successful modern designs, with over 160 boats completed, this model continues to sell well and deliver a blend of performance and comfort. SAINT OF CIRCUMSTANCE, was commissioned summer of 2007 and is equipped for coastal cruising and beyond. She has the deep keel, which makes her a wolf in sheep's clothing, when you are side by side sailing upwind! She was custom specified by experienced owners and maintained to very high standards!

- Majestic Blue Hull
- Deep Fin Performance Keel
- Traditional Sail plan / Carbon Mast
- Aluminum Toe-rails
- Doyle Sails w/ Strong Track
- RayMarine Package
- C80 Radar / Chartplotter
- Navy Blue Canvas
- Fairclough Winter Cover

Knowledgeable owners have taken excellent care of her. If you have been looking for a recent 3700, take a close look I am certain you will be impressed. Contact Listing broker for showings!

Click on Full Specs for additional info!

Basic Information

Category: Cruising Sailboat

Model Year: 2007

Year Built: 2007

Country: United States

Dimensions

LOA: 37' 0" (11.28m)

LWL: 32' 6" (9.91m)

Beam: 12' 8" (3.86m)

Max Draft: 7' 3" (2.21m)

Clearance: 56' 0" (17.07m)

Speed, Capacities and Weight

Displacement: 15950 Pounds

Water Capacity: 80 Gallons

Holding Tank: 20 Gallons

Fuel Capacity: 38 Gallons

Accommodations

Total Cabins: 2

Total Berths: 4

Total Heads: 1

Hull and Deck Information

Hull Material: Fiberglass

Hull Designer: Tim Jackett

Engine Information

Engines: 1

Manufacturer: Volvo Penta

Model: D2-40

Engine Type: Sail Drive

Fuel Type: Diesel

DETAILED INFORMATION

Features

Accommodations

The Tartan 3700 has an open and spacious floor-plan for a 37 footer. The forward cabin has a large double bunk with drawer storage under the bunk. This model has the dual - bureau option, instead of the vanity in the forward cabin! The forward cabin has two hatches and two ports, so she gets great ventilation on the hook. The main salon has port and starboard settees with the starboard settee pulling out to make a double bunk. The drop leaf table accommodates 4 - 6 dining. You'll find the ultra-suede cushions very inviting after a great day on the water. The Nav-Station is fully functional with plenty of space for a "boat office" or for charting and planning your next adventure. Plenty of drawer and desk storage, along with a nice hideaway for the tool box under the nav seat. The head is spacious, with a dedicated stall shower, she feels more like a 40 footer than a 37... The galley is a L shaped with large counters, plenty of storage cabinets and drawers. You'll love the ergonomic layout having the sinks on center-line. It frees up counter space and makes working this galley a pleasure! Large icebox with front and top access too. The aft cabin is quite large as well accommodating a second couple in comfort. In fact a lot of our owners make the aft cabin the master and forward cabin for guests. Guess you "have to decide for yourself, which cabin will be yours...Either way your guests will feel welcome and appreciate what you have provided for them!

- SS Hood Ports w/ Screens
- Forward Cabin with Dual Bureaus instead of Vanity
- Companionway Hatch Screens
- Cherry Interior with Raised Panel Doors
- Teak and Holly Cabin Sole
- Ultra Suede Interior Fabric- Navy Blue
- Drop Leaf Dining Table

Galley

- Granicoat Counter Tops - ARIA
- Galley Extension
- Double Sinks - SS
- Foot Pump (fresh water)
- Force 10 Three Burner Stove with Oven
- New Propane Tank - 2015
- Xintex LPG Sniffer / Solenoid
- 12 vdc Refrigeration
- Ample Cabinet and Drawer Storage

Electronics

- RAYMARINE ELECTRONICS
- ST 60 - Speed, Depth & AWI on Companionway POD
- C80 Radar / Plotter On Pod At Helm
- 2KW Radome on Kato Stern Pole
- ST60 Multi Function Display - Nav Station
- VHF Standard Horizon GX3000
- **DSC, Hailer, & Ram Mic
- Clarion AM/FM/CD w/ Bose Speakers
- 6 CD Changer w/ Remote

Electrical & Systems

- Full 12 VDC & 110 VAC Distribution Panels
- Dual ShorePower System
- Freedom 10 Inverter / Charger
- 12 VDC outlets at Helm and Nav Station
- Hot & Cold Pressure Water - Dual Tanks
- Opening Transom Door for Water Access
- Y Valve & Macerator Systems
- VOLVO 40 HP Engine with Saildrive
- Manual Bilge Pump
- Auto Bilge Pump
- Shower Sump with GrayWater Pump
- Upgraded Raritan Head - 2013
- Fuel & Water Remote Gauges
- Holding Tank Gauge
- Courtesy Lights
- Two House Batteries - 2015
- One Engine Start Battery - 2015

Deck & Rigging

- Carbon Fibre Mast
- Wire Standing Rigging
- Strong Track System for Mainsail
- Lazy Jack System for Mainsail
- Split Hydraulic Backstay Adjuster
- Harken Genoa Furler
- Rod Vang Led Aft
- Spinnaker Halyard
- Harken Deck Hardware Throughout
- All Halyard/ Controls lines aft
- Spinlock Stoppers For Control Lines

- Harken # 53 STC Primary Winches
- Harken # 40 STC House Winches
- Harken Inboard Adjustable Genoa Tracks
- Two SS Dorades
- Lewmar Rack & Pinion Steering Pedestal
- Leather Covered Mini-Maxi Wheel
- Custom Teak Cockpit Table
- Kato Stern Pole for Radar
- Radar Reflector on backstay
- Removable - Second Anchor Roller

Sails & Canvas

- Mainsail - Doyle Dacron - Full Batten
- Genoa - Doyle Dacron - 135%
- Captains Navy Sailcover w/ Slits
- Dodger - Navy Blue
- Pedestal Cover - Navy Blue
- Fairclough - Winter Cover

Additional Notes

This 3700 is a wolf in sheep's clothing. Her LIS PHRF rating is 113. She is equally matched day sailing and cruising, as casual / beer-can racing. Knowledgeable owners have done a little fun racing only, so she shows very well. If you have been looking for a late model Tartan 3700 this is a "keeper" she is priced right and ready to go!

- Majestic Blue Awlgrip Hull
- White Boot Stripes
- Gold Cove Stripe
- Aluminum Toe-rails
- White Deck
- Carbon Rig
- Traditional Sailplane
- Deep Fin Performance Keel
- Docking, Safety & Anchor Gea
- Ray marine Electronics Package
- Doyle Sails
- Fairclough Cover - Serviced / Stitched 2015
- 8 Jack Stands & 1 V / Bow Stand

Please NOTE - Owners have reserved the rights to the name - "Saint of Circumstance"

Saint of Circumstance is a Beautifully equipped and maintained Tartan 3700. She has had light use and shows VERY well. Ready for your inspection and sailing schedule!

Call today for a showing, you won't be disappointed!

GOT A TRADE -- Give us a call - Owner willing to take Trades!!

Exclusions

Owner's personal belongings.

Disclaimer

The Company offers the details of this vessel or yacht in good faith but cannot guarantee or warrant the accuracy of this information nor warrant the condition of the vessel. A buyer should instruct his representatives, agents, or his surveyors, to investigate such details as the buyer desires validated. This vessel or yacht is offered subject to prior sale, price change, or withdrawal without notice.

PHOTOS

Tartan 3700 - Mooring



At the Dock



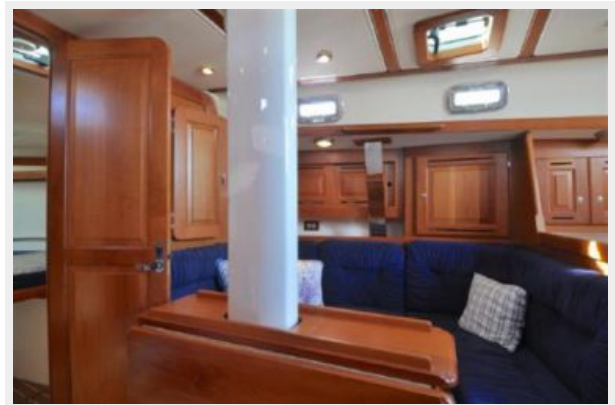
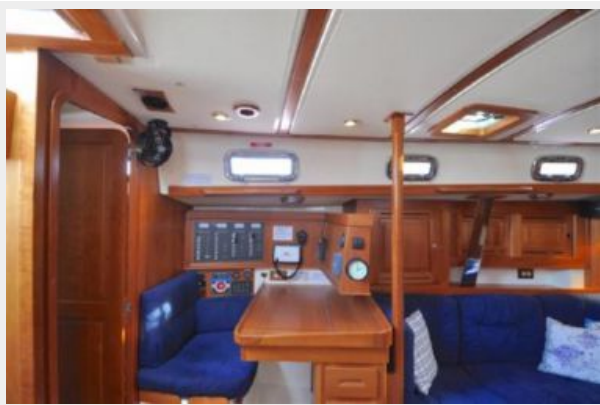
Mooring





Companioway













Cover

Tartan 3700 Layout



Fairclough Cover



Resting Comfy!



On the hard



CONTACTS

Andrey Shestakov, leading yacht broker of the sales department of Shestakov Yacht Sales Inc. Shestakov Yacht Sales Inc., the official representative of the Miami/Fort Lauderdale FL headquarters.

Contact details

Email: andrey@shestakovyachtsales.com

Web: shestakovyachtsales.com/en/

Telephones

USA: +1(954)274-4435

Office hours

Monday – Saturday: **9:00 - 21:00** EDT

Sunday: **closed**

Address



Harbour Towne Marina, 850 NE 3rd St,
STE 213, Dania, FL 33004