

ENCORE — TARTAN



Судостроитель: TARTAN

Год постройки: 2006

Модель: Крейсерская яхта

Цена: **ЦЕНА ЯХТЫ ПО ЗАПРОСУ**

Местонахождение: United States

Длина общая: 37' 0" (11.28m)

Ширина: 12' 8" (3.86m)

Макс. осадка: 5' 0" (1.52m)

Купить **ENCORE — TARTAN** а также выбрать подходящую вам яхту из нашего каталога яхт вам поможет опытный яхтенный брокер Андрей Шестаков. На сегодняшний день компания **Shestakov Yacht Sales Inc.** имеет большое количество яхт в собственном списке продаж, а также тесно сотрудничает со всеми крупными яхтенными производителями по всему миру.

Для того чтобы купить яхту **ENCORE — TARTAN** а также проконсультироваться по любому вопросу связанному с покупкой, продажей, чартером яхт позвоните по телефону **+7(918)465-66-44**.

ОГЛАВЛЕНИЕ

ОГЛАВЛЕНИЕ	2
ХАРАКТЕРИСТИКИ	3
Обзор	3
Основная информация	3
Размеры	3
Скорость, вместимость и масса	3
Размещение	3
Корпус и палуба	3
Информация о двигателе	4
ПОДРОБНОЕ ОПИСАНИЕ	5
Features	5
Исключения	8
Отказ от ответственности	8
ФОТОГРАФИИ	9
КОНТАКТЫ	20
Контактная информация	20
Телефоны	20
Время работы	20
Адрес	20

ХАРАКТЕРИСТИКИ

Обзор

ENCORE is a one-owner, lightly used Tartan 3700. Very well equipped and ready for inshore or cruising. Superbly cared for and meticulously maintained. This boat shows like a 3-year-old NOT a 12-year-old. Consistent care and thoughtful updates throughout!

Highlights include Blue Hull, Chart Plotter, Autopilot, Air Con, Full Canvas, Winter Cover and MORE!

Основная информация

Тип судна: Крейсерская яхта

Модельный год: 2006

Год постройки: 2006

Страна: United States

Размеры

Длина общая: 37' 0" (11.28m)

Длина по ватерлинии: 32' 6" (9.91m)

Ширина: 12' 8" (3.86m)

Макс. осадка: 5' 0" (1.52m)

Трапы: 55' 0" (16.76m)

Скорость, вместимость и масса

Водоизмещение: 15950 Pounds

Размещение

Всего кают: 2

Всего ком. состава: 1

Корпус и палуба

Материал корпуса: Fiberglass

Комплектация корпуса: Monohull

Информация о двигателе

Двигатели: 1

Производитель: Yanmar

Модель: SD50

Тип двигателя: Sail Drive

Тип топлива: Diesel

ПОДРОБНОЕ ОПИСАНИЕ

Features

Accommodations

The Tartan 3700 was first launched in 2000 and has been a top seller for Tartan ever since. The layout feels like most 40 footers and she truly has two owners cabins.

The Tartan 3700 has won numerous awards including Cruising World's Boat of the Year competition.

Starting forward we have a large double bunk. ENCORE was modified at the factory to have a flat faced bunk, instead of the filler notch. This adds a more comfortable bunk and also extra storage drawers. Tartan also added cherry hull sealings to the hull sides and deleted the vanity in lieu of a bureau storage locker. These modifications have become very popular and are preferred over the standard layout.

The main salon is open and airy. The centerline drop leaf table accommodated 4-6 people and the starboard settee opens into a double bunk when needed. The nav station is forward facing and has all the breaker controls, with an opening desk and drawers for storage. The forward panel accommodates a Radar / Plotter easily as well.

On the starboard side is the galley, which has lots of counter and locker storage. The insulated icebox is large and has front and top opening access as well as refrigeration. LPG Force 10 stove with oven gimbals outboard. This is a galley you will come to love. The ergonomics are right and it is nice and secure offshore as well.

The aft cabin has a large double bunk with plenty of locker storage. Many owners prefer to sleep aft in the boat, although either cabin makes a comfortable master.

Manufacturer Provided Description When Tartan's designer, Tim Jackett, set out to create the latest in a long line of excellent 37-footers from Tartan, he thought past the usual approach to the performance/accommodation puzzle to arrive at a number of wow, that's the way to go-style solutions. The result is a fast and stable performance cruising yacht with an uncommonly welcoming and functional interior. A key aspect of the Tartan 3700's reassuring stability is the generous 12-foot 7-inch beam that is carried well aft, but with an innovative twist at the stern where topside flare adds plenty of deck and cockpit space, while keeping the transom waterline on the trim side. The tall, two-spreader masthead rig provides plenty of sail for rewarding performance in light winds, and each of the 3700's keel options is designed to make the boat stand up and keep driving in breezy conditions. The accommodation plan of the Tartan 3700 works equally well for feeding and watering a cruising crowd or for pampering a family or two cruising couples on an extended sailing vacation. The two staterooms are completely private,

each with generous-size clothes drawers and hanging locker. And by cleverly angling the bulkheads of the dinette outward and angling the bulkheads of the nav station and galley inward the feel of the 3700's interior suits the particular function of each space.

Systems and Electrical

- Hot & Cold Pressure Water
- Deep Double SS Sinks
- Freedom 10 Inverter Charger
- Xantrax Link Control Panel
- 12 vdc Outlets at Helm & Nav
- Courtesy lights
- Marine Air 16k BTU
- Insulated Icebox w/ Refrigeration
- 110v Shorepower Distribution Panel
- Dual 110 Systems / Cords
- 12vdc Distribution panel
- Manual & Electric Bilge Pumps
- Two Battery House Bank - 200+ ah
- One Engine / Backup Battery
- Galvanic Isolator

Tankage

- 38 Gallon Fuel Tank (Stbd Settee)
- 80 Gallons of water in 2 Tanks (Bow & Port)
- 24 Gallon Holding Tank (Bottom of Sail locker)

Electronics

- Raymarine ST 60 Speed, Depth & AWI at Helm
- Raymarine ST6002+ Smart Autopilot
- Raymarine C80 Chartplotter at Nav Station
- Raymarine C65 Chartplotter at Helm (2014)
- AM/FM/CD w/ four Speakers
- ICOM 506 VHF w/ AIS (2015)
- ICOM RAM Mic @ Helm (2015)
- Samsung TV w/ DVD Player

Deck and Rigging

- Novis Carbon Fiber Mast
- Strong Track Mainsail Track System
- Aluminum Boom
- Rod Vang Led Aft

- Harken Genoa Furling w/ aft lead kit
- Spinnaker Halyard Led Aft
- Dutchman System for Mainsail Flaking
- Self Tailing Winches
- Housetop Electric Winch (Mainsheet / Halyard)
- All Control Lines led aft
- Teak Handrails on Deck
- Harken Inboard Adjustable Genoa Tracks
- Whitlock rack & Pinion Steering Pedestal
- Custom Teak Pedestal Trim / Cup Holders
- Single Lever Engine Controls
- Teak Cockpit Table
- Leather covered Wheel
- Teak ToeRails & Teak Rub Rail
- SS Hatches & Opening Ports

Sails and Canvas

- Dacron Full Batten Mainsail - Doyle (2016)
- Dacron Roller Furling 135% genoa - Doyle (2016)
- Doyle Asymmetric Cruising Chute in Sock - Doyle (2007)
- Dodger - Toast (2016 / 17)
- Bimini & Connector Toast (2016 / 17)
- Pedestal Cover
- Winch Covers
- Sailcover w/ Slits for Dutchman (2016)
- Winter Deck Cover
- Cockpit Cushions

Additional Information

ENCORE is a lightly used well equipped Tartan 3700. Low hours(less than 500) , Bay cruising and day sailing only on the Chesapeake. Lots of gear, and well thought out equipment. Call today for a showing, she won't last long - over 400k to replacement.

- Flag Blue Awlgrip Hull
- White Deck with Sand Color Nonskid
- Epoxy Hull
- White Boot Strip & Gold Cove Stripe
- Teak Tie Rails and Rub Strakes
- Carbon Fiber Mast
- Cherry Interior
- Custom forward cabin bunk(Flat Faced-No Notch) / Bureau (Instead of Vanity)
- Air Conditioning - 16kBTU - Factory Installed - Replaced 2011

- Yanmar Saildrive Engine - low hours - LESS THAN 500!
- SD 50 Saildrive - Boot Replaced in 2012
- Toast Canvas(tan) - New 2016 / 2017
- Fresh Sikkens on Teak
- Docking Safety & Anchor Gear
- SS CQR Anchor w/ Chain & Rope spliced
- Spare Anchor / Rode

IF you have been shopping for Tartan 3700s ENCORE is a superb example, lovingly cared for and updated -- Don't wait -- Schedule an appointment NOW - She WILL NOT disappoint! This is the ONE you have been waiting for...

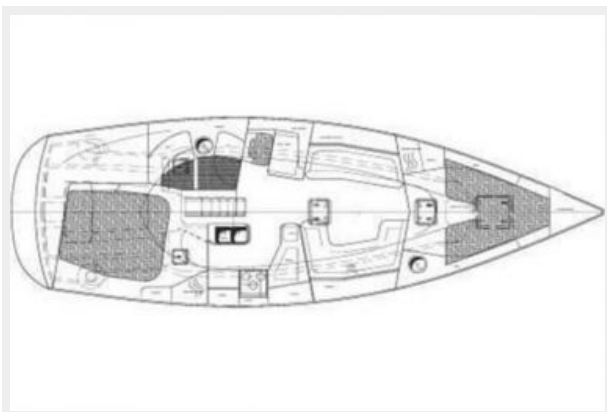
Исключения

При продаже яхты исключаются личные вещи владельца.

Отказ от ответственности

Компания предоставляет описание судна или яхты добросовестно, но не может гарантировать точность этой информации, а также не ручается за техническое состояние. Покупатель должен проинструктировать своих агентов или оценщиков исследовать представленную информацию более подробно, по собственному желанию. Продажа судна или яхты, изменение цены или снятие с продажи будет происходить без предварительного уведомления.

ФОТОГРАФИИ



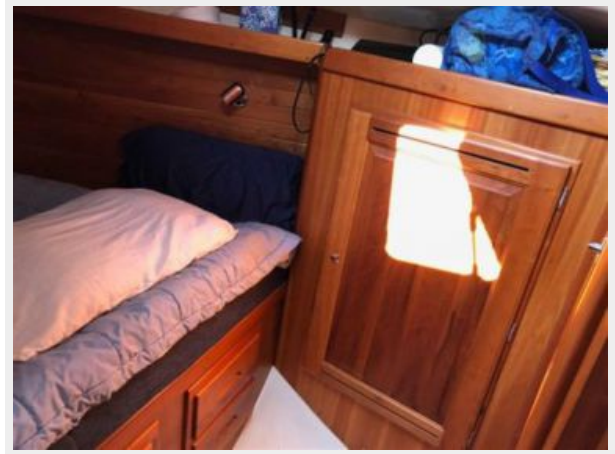
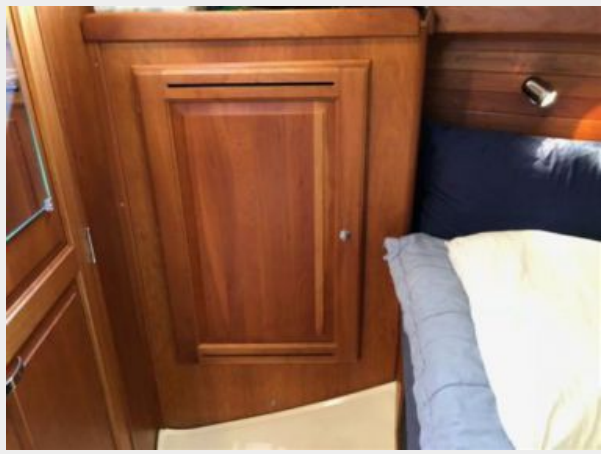


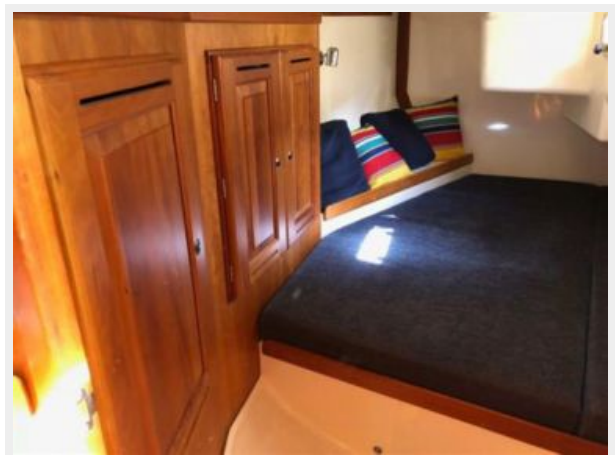


















КОНТАКТЫ

Андрей Шестаков (Andrey Shestakov) – ведущий яхтенный брокер отдела продаж яхт и судов компании Shestakov Yacht Sales Inc. Официальный представитель Shestakov Yacht Sales Inc. для русскоговорящих клиентов в центральном офисе компании в Майами/Форт Лодердейл/Флорида/США.

Контактная информация

Email: andrey@shestakovyachtsales.com

Web: shestakovyachtsales.com

Телефоны

Краснодарский край: **+7(918)465-66-44**

США, Майами, Флорида: **+1(954)274-4435**

Время работы

Понедельник – Суббота: **9:00 - 21:00**
EDT

Воскресенье: **Закрито**

Адрес



Harbour Towne Marina, 850 NE 3rd St,
STE 213, Dania, FL 33004