

WAVELENGTH — TARTAN



Судостроитель: TARTAN

Год постройки: 2015

Модель: Cruising/Racing Sailboat

Цена: ЦЕНА ЯХТЫ ПО ЗАПРОСУ

Местонахождение: United States

Длина общая: 33' 0" (10.06m)

Ширина: 11' 0" (3.35m)

Макс. осадка: 6' 6" (1.98m)

Купить **WAVELENGTH — TARTAN** а также выбрать подходящую вам яхту из нашего каталога яхт вам поможет опытный яхтенный брокер Андрей Шестаков. На сегодняшний день компания **Shestakov Yacht Sales Inc.** имеет большое количество яхт в собственном списке продаж, а также тесно сотрудничает со всеми крупными яхтенными производителями по всему миру.

Для того чтобы купить яхту **WAVELENGTH — TARTAN** а также проконсультироваться по любому вопросу связанному с покупкой, продажей, чартером яхт позвоните по телефону **+7(918)465-66-44**.

ОГЛАВЛЕНИЕ

ОГЛАВЛЕНИЕ	2
ХАРАКТЕРИСТИКИ	3
Обзор	3
Основная информация	3
Размеры	3
Скорость, вместимость и масса	3
Размещение	3
Корпус и палуба	4
Информация о двигателе	4
ПОДРОБНОЕ ОПИСАНИЕ	5
Features	5
Исключения	8
Отказ от ответственности	8
ФОТОГРАФИИ	9
Sistership Photo	9
КОНТАКТЫ	12
Контактная информация	12
Телефоны	12
Время работы	12
Адрес	12

ХАРАКТЕРИСТИКИ

Обзор

HIGHLIGHTS - Fresh Water TN Lake use (J. Percy Priest Lake) - Carbon Mast - Bow Spirt - Wheel and LOTS More!

- Dark Blue Hull / White Deck
- Carbon Rig
- Bowsprit Carbon
- Carbon Wheel
- High Tech Running rigging
- Custom Interior Additions

Основная информация

Тип судна: Cruising/Racing Sailboat

Модельный год: 2015

Год постройки: 2015

Страна: United States

Размеры

Длина общая: 33' 0" (10.06m)

Ширина: 11' 0" (3.35m)

Макс. осадка: 6' 6" (1.98m)

Трапы: 54' 6" (16.61m)

Скорость, вместимость и масса

Водоизмещение: 10800 Pounds

Вместимость воды: 30 Gallons

Вместимость сточного бака: 16 Gallons

Объем топливного бака: 20 Gallons

Размещение

Всего кают: 1

Всего коек: 5

Всего ком. состава: 1

Корпус и палуба

Материал корпуса: Fiberglass

Дизайнер корпуса: Tartan Design Team

Информация о двигателе

Двигатели: 1

Производитель: Volvo Penta

Модель: D-20

Тип двигателя: Sail Drive

Тип топлива: Diesel

ПОДРОБНОЕ ОПИСАНИЕ

Features

Tartan 101 - WAVELENGTH - Highlights

The Tartan 101 is an ideal Racer / Cruiser. She has a modern hull form with bulb keel. Asymmetric sprit / Spinnaker for short-handed performance sailing. AND a modest interior with a functional layout and standing headroom.

WAVELENGTH was custom configured for an owner for weekending and club racing. Mission accomplished, this is a great platform, well thought out and equipped right of the task at hand!

Custom features completed by Tartan include

- Wheel steering with Carbon 60" Wheel
- Custom Forward Cabin Storage Locker / Doors
- Bulkhead Mounted Salon Table
- Dodger

Owner spent over 20k at Tartan factory optimizing details for performance cruising / racing.

Tartan 101 Overview

The 101 hull is designed to maximize overall performance without trending to any extreme, creating a boat that offers exhilarating performance on all points of sail. Her nearly 11-foot beam offers excellent form stability and in conjunction with the 6'6" bulbed lead keel provides the stiffness to support a sail area to displacement ratio of 25.8. With a BPA modified epoxy infused hull and deck, optimized uni-directional e-glass laminates, and synthetic hull coring, the 101 is the stiffest, lightest and strongest hull structure available in her size range amongst production builders. The 101 features a fractional carbon fiber mast, carbon fiber rudder post and retractable carbon fiber bow sprit. Co-engineered by SP Systems, the world leader in composite engineering and materials technology, the mast section is optimized to the 101 with careful attention paid to minimize weight aloft. The 101's carbon fiber mast is built using prepreg carbon fiber in aluminum tooling, and autoclave cured at temperatures of up to 250 degrees F and 100 psi. This yields a mast that weighs less than half of a comparable aluminum spar, yet is stronger and stiffer. With swept back spreaders led outboard to the hull sides, the 101 offers an impressive 671 square feet of upwind sail area without the hassle of large overlapping headsails. The retractable carbon fiber bow sprit and masthead asymmetrical spinnakers ensure exhilarating off wind performance while making the sailplan easily manageable when cruising or shorthanded. Rakish deck designs have undergone a modern update on the 101. A nearly 12' long cockpit provides plenty of working room for the crew. Molded braces provide secure seating for the driver and main trimmer located well clear of jib trimmers and forward crew. For the first time ever, the 101 features a molded carbon fiber and composite tiller as standard equipment, providing the ultimate feedback and feel to the helmsman. When she is not on the

racecourse, the forward end of the cockpit features molded cockpit seats and deep coamings that provide secure, comfortable seating in all conditions. Below decks, the 101 offers refined luxury in line with her pedigree. Lightweight composite components combined with varnished cherry cabinetry and laminated curved trims provide a spacious and comfortable interior while minimizing weight. Bulkheads are attached to hull, deck and interior components using engineered adhesives and epoxy resins; adding stiffness to the hull structure without adding weight. Accommodations for six are available in the forward double cabin, twin aft quarter berths and main cabin settee. The nav station to starboard accommodates full navigation and electrical instrumentation with a full-size chart table as an excellent working surface. The galley to port is fit with a two burner stove, large insulated icebox and deep stainless steel sink. Just forward of the main bulkhead is a large head with lightweight composite construction and molded in sink. Aerospace quality composites, modern construction techniques and careful attention to detail afford the 101 with an interior arrangement that belies her performance capabilities.

Interior Highlights

The Tartan 101 has an open floorplan. Double Fee Bunk forward. Modest Head w/ Sink. Large Open Salon with port and starboard settees. The settee backs remove and fix inboard for lee boards or sailing storage cubbies. Nav station is in front of the starboard aft bunk and galley is in front of the port side aft bunk.

This interior feels large for a 33 footer with a 12 cockpit. AND she has 6' standing headroom.

Wavelength has the optional Cherry Interior w/ a solid teak cabin sole.

She also has a custom Salon table which hinges off the Starboard main bulkhead. The table stores on the bulkhead and can comrade 3 or 5 dining! with a drop leaf

Custom Interior Options on Wavelength

- Cherry Interior
- Bulkhead stored Salon Table
- Additional Storage locker s/ doors forward
- Additional Storage doors aft at galley

Galley

- SS Sink
- Hot & Cold Pressure Water
- Slate Grey Laminate Counters
- Insulated Icebox
- 12 vdc Refrigeration
- Upper / lower Locker Storage
- 2 Burner Alcohol Stove

Systems and Electrical

- 12 vdc Distribution Panel
- 110 vac Shore Power System w/ Outlets
- Battery Charger
- Hot & Cold Pressure Water
- Auto Bilge pump
- Manual Bilge Pump in Cockpit
- 2 Batteries - Group 27
- Remote Fuel Gauge at Nav Station
- 12 vdc Outlet At Nav & Helm

Electronics

- Garmin Electronics package
- Garmin GMI 20 Displays x 4 @ Companionway
- Wind/ Speed / Depth Transducers
- Garmin VHF @ Nav Station w/ RAM at Helm
- Garmin 741 Plotter / GPS at Nav Station
- Fusion Stereo w/ 4 Speaker IP 700 (Interfaced)

Deck and Rigging

- Aspire Carbon Fibre Mast w/ Swept Spreaders
- Rod Standing Rigging
- Harken mk IV Furler for Jib
- Selden Black Anodized Boom
- Single Line Mainsail Reef
- Selden Rod Kicker / Rod Vang w/ Tackle Led Aft
- 2 Spinnaker Halyards
- 1 Jib Halyard
- 1 Main Halyard
- All Running Rigging High Tech / Good Quality
- Carbon Fiber Bow Sprit in Centerline Deck Trough
- No water Intrusion into interior from Sprit!
- Inboard Adjustable Genoa Tracks - Harken
- Jib In-hauler System
- Harken Traveler / Mainsheet System
- Gross and Fine Tune Mainsheet System 6:1 & 24:1
- Harken Cascade Backstay System
- Wheel Steering Option w/ Pedestal
- Carbon Fibre 60" Helmsman Wheel

Sails and Canvas

- Sails by Sobstad
- Full Batten Mainsail w / reef Dacron
- 102% Furling Jib
- Mainsail Cover /w Logo
- Jib UV Cover
- Pedestal / Wheel Cover

Broker Comments

Wavelength is a VERY lightly used Tartan 101 -- Sailed Exclusively in Fresh Water lake in TN.

Beautifully ordered and equipped and hardly used. Shows as close to new as one could imagine...Over 230k invested. So she is an excellent value!

Please call today for a showing -- She won't last long!

Исключения

При продаже яхты исключаются личные вещи владельца.

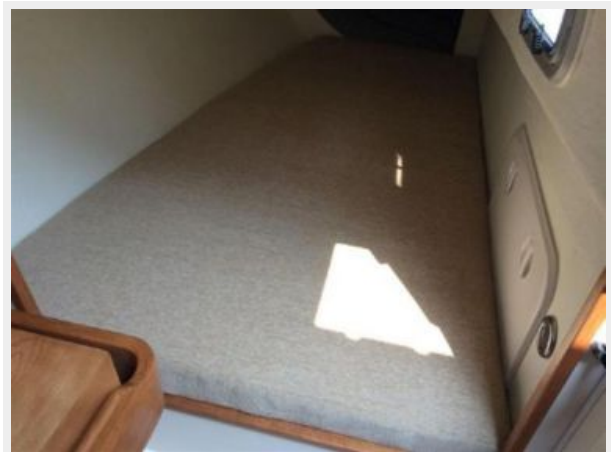
Отказ от ответственности

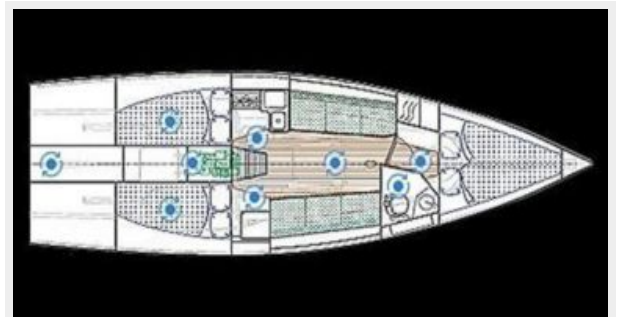
Компания предоставляет описание судна или яхты добросовестно, но не может гарантировать точность этой информации, а также не ручается за техническое состояние. Покупатель должен проинструктировать своих агентов или оценщиков исследовать представленную информацию более подробно, по собственному желанию. Продажа судна или яхты, изменение цены или снятие с продажи будет происходить без предварительного уведомления.

ФОТОГРАФИИ

Sistership Photo







КОНТАКТЫ

Андрей Шестаков (Andrey Shestakov) – ведущий яхтенный брокер отдела продаж яхт и судов компании Shestakov Yacht Sales Inc. Официальный представитель Shestakov Yacht Sales Inc. для русскоговорящих клиентов в центральном офисе компании в Майами/Форт Лодердейл/Флорида/США.

Контактная информация

Email: andrey@shestakovyachtsales.com

Web: shestakovyachtsales.com

Телефоны

Краснодарский край: **+7(918)465-66-44**

США, Майами, Флорида: **+1(954)274-4435**

Время работы

Понедельник – Суббота: **9:00 - 21:00**
EDT

Воскресенье: **Закрето**

Адрес



Harbour Towne Marina, 850 NE 3rd St,
STE 213, Dania, FL 33004