

ANEMA & CORE — C & C YACHTS



Builder: C & C Yachts

Year Built: 2015

Model: Racing Sailboat

Price: PRICE ON APPLICATION

Location: United States

LOA: 30' 0" (9.14m)

Beam: 9' 10" (3.00m)

Max Draft: 7' 6" (2.29m)

Our experienced yacht broker, Andrey Shestakov, will help you choose and buy a yacht that best suits your needs **ANEMA & CORE — C & C Yachts** from our catalogue. Presently, at Shestakov Yacht Sales Inc., we have a wide variety of yachts available on our sale's list. We also work in close contact with all the big yacht manufacturers from all over the world.

If you would like to buy a yacht **ANEMA & CORE — C & C Yachts** or would like help answering any questions concerning purchasing, selling or chartering a yacht, please call **+1(954)274-4435**

TABLE OF CONTENTS

TABLE OF CONTENTS	2
SPECIFICATIONS	3
Overview	3
Basic Information	3
Dimensions	3
Speed, Capacities and Weight	3
Accommodations	3
Hull and Deck Information	3
Engine Information	4
DETAILED INFORMATION	5
Features	5
Exclusions	9
Disclaimer	9
PHOTOS	10
C&C 30	10
C&C 30 One Design Start	10
ANEMA & CORE Upwind	10
C&C 30	10
C&C 30	10
Bulb Keel	11
C&C at rest!	11
Indoor - AHhhhh	11
CONTACTS	12
Contact details	12
Telephones	12
Office hours	12
Address	12

SPECIFICATIONS

Overview

C&C 30 by US Watercraft - This is a grand prix program. Indoor climate control storage. Ready to go race Program! No expense spared!

Call today for a showing!

Basic Information

Category: Racing Sailboat

Model Year: 2015

Year Built: 2015

Country: United States

Dimensions

LOA: 30' 0" (9.14m)

LWL: 28' 8" (8.74m)

Beam: 9' 10" (3.00m)

Max Draft: 7' 6" (2.29m)

Speed, Capacities and Weight

Displacement: 3995 Pounds

Fuel Capacity: 6 Gallons

Accommodations

Total Cabins: 1

Total Berths: 4

Total Heads: 1

Hull and Deck Information

Hull Material: Composite

Hull Configuration: Bulb Keel

Hull Designer: Mark Mills

Engine Information

Engines: 1

Manufacturer: Volvo Penta

Model: D1-13

Engine Type: Sail Drive

Fuel Type: Diesel

DETAILED INFORMATION

Features

CONSTRUCTION DETAILS

- Hull and deck are Vinylester / E-Glass / Foam Core Resin-Infused, Carbon Reinforcing in Structural Grid.
- Keel: Carbon Fiber Fin / Lead Bulb / Retracts for Transport
- Rudder: Carbon Fiber Stock / E-Glass and Carbon Fiber Reinforced Blade
- Self-Aligning Roller Bearings

INTERIOR LAYOUT

- Open racing interior
- Porta-Potty forward
- 2 settee berths amidships
- Storage under berths

ELECTRICAL

- 12v DC Distribution Panel
- Main Battery Switch
- Battery 70 RC/55 AH Deep Cycle (Second Battery Optional)
- Alternator 115 Amp
- ORC Approved Navigation Lights
- LED Overhead Lights
- 12v DC bilge pump option installed

ELECTRONICS

- B&G H5000 CPU Hercules
- B&G Go Free Wireless system
- 4 B&G 20/20 Displays on mast pod
- 1 B&G H500 color Graphic Display
- H5000 Speed Sensor

- DT800 Depth Sensor
- B&G Vertical MHU Wind Sensor
- RC42N Compass
- Panasonic Tough book with Expedition
- System Professionally Calibrated

MECHANICAL

- Inboard Diesel Engine, Volvo Sail-drive 12 HP
- Two Blade Folding Race Propeller
- Fuel Tank 6.5 US Gallon (25 liter)
- Fuel Filter & Water Separator
- Water-lock Muffler

DECK GEAR

- Primary Winches: 2 x Harken 40.2 PT
- Backstay Winches: 2 x Harken 35.2 ST
- Handles: 3 x Harken
- Custom Bow / Stern Pulpits with Running Lights
- Stanchions: Tapered S/S with Braces
- Lifelines: Dyneema Upper & Lower
- Rope Clutches, Spinlock
- Jib Leads, Athwart ship In/Out Up/ Down
- Controls Below Deck to Trimmer
- Jib Cunningham Below Deck to Trimmer
- Cunningham 5:1 & Outhaul 8:1 lead aft to pit
- Mainsheet: 16:1, Coarse Tune / Fine Tune
- Traveler 4:1 to Main Trimmer
- Vang, Spectra 16:1 Tack line to Spinlock Clutch
- Foredeck Hatch Lewmar 22" Diameter Round

- Accessible Port on Cockpit Face for Lines
- Composite Tiller with Tiller Extension

RIG AND RIGGING

- Hall Spars Carbon Fiber Rig: Two Sets Swept Spreaders
- Carbon Bow Sprit, Removable for Docking & Transport
- Halyard Locks for Main & Primary Jib
- Aluminum Boom with 8:1 Outhaul & Provision for 1 Reef
- Two Dyneema Topmast Running Backstays
- Shrouds: 1 X 19 S/S Wire
- New England Ropes Running Rigging Package
- All Necessary Blocks, Cleats, and Halyard Locks
- Optional hydraulic mast jack installed
- Optional Harken Carbo Foil installed
- Optional second jib halyard installed
- Optional GP upgraded running rigging package included

SAILS

- Main- 2015 not buttoned Chesapeake Sail makers
- Main- 2016 buttoned Chesapeake Sail makers
- Main- 2017 buttoned Elvstrom
- J1- 2015 buttoned Chesapeake Sail Makers
- J1- 2017 buttoned Elvstrom
- J2- 2015 not buttoned Chesapeake Sail makers
- J2- 2016 buttoned Chesapeake Sail makers
- J2- 2017 buttoned Elvstrom
- J3- 2016 buttoned Chesapeake Sail makers
- A1- 2016 not buttoned Chesapeake Sail makers
- A1.5- 2015 not buttoned Chesapeake Sail makers
- A1.5- 2017 buttoned Elvstrom
- A2- 2015 not buttoned Chesapeake Sail makers
- A2-2017 buttoned Elvstrom

- A3- 2017 buttoned Elvstrom – Never Used

ADDITIONAL DETAILS

- TRAILER - High/Low galvanized steel with hull formed bunks
- Grand Prix race bottom to 600 grit finish
- Sea-deck 5mm non-skid in cockpit (New November 2016)
- Carbon Fiber Bow Roller for Spinnaker takedown system
- Single point lift harness
- Keel Clamshell for trailering
- Custom Mast Cover
- Custom Boom Cover
- Custom Tiller Cover
- Custom Padded bow Sprit Cover
- Instrument mast pod Cover
- Spreader Bag
- Dehumidifier
- Trailer box
- 4 Dock lines, 3 fenders

SPARES

- Jib Sheets
- Spinnaker Sheets
- RunnersRunner Tails
- Main Halyard
- Spinnaker Halyard
- Tiller
- Wind cups and Windex

BROKER COMMENTS

Anema & Core is a professionally maintained, complete turnkey package ready to launch and race. Always dry-sailed and currently stored indoors in a climate-controlled facility. The name Anema & Core is reserved by the Seller and is not transferable to a Buyer.

Contact us today to answer any questions or to make arrangement for a showing.

You will NOT be disappointed!

Exclusions

Owner's personal belongings.

Disclaimer

The Company offers the details of this vessel or yacht in good faith but cannot guarantee or warrant the accuracy of this information nor warrant the condition of the vessel. A buyer should instruct his representatives, agents, or his surveyors, to investigate such details as the buyer desires validated. This vessel or yacht is offered subject to prior sale, price change, or withdrawal without notice.

PHOTOS

C&C 30



C&C 30 One Design Start



ANEMA & CORE Upwind



C&C 30



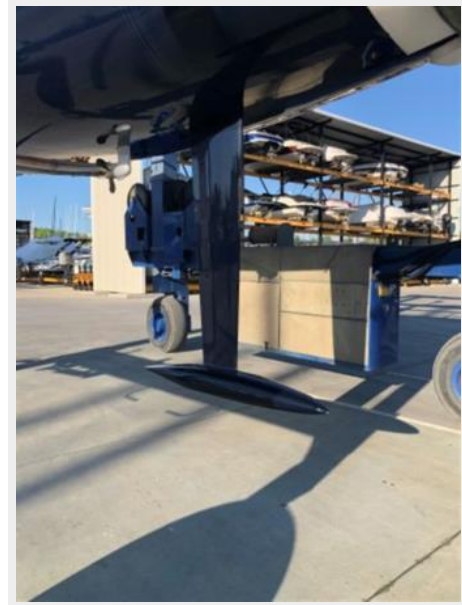
C&C 30



C&C at rest!



Bulb Keel



Indoor - AHhhh



CONTACTS

Andrey Shestakov, leading yacht broker of the sales department of Shestakov Yacht Sales Inc. Shestakov Yacht Sales Inc., the official representative of the Miami/Fort Lauderdale FL headquarters.

Contact details

Email: andrey@shestakovyachtsales.com

Web: shestakovyachtsales.com/en/

Telephones

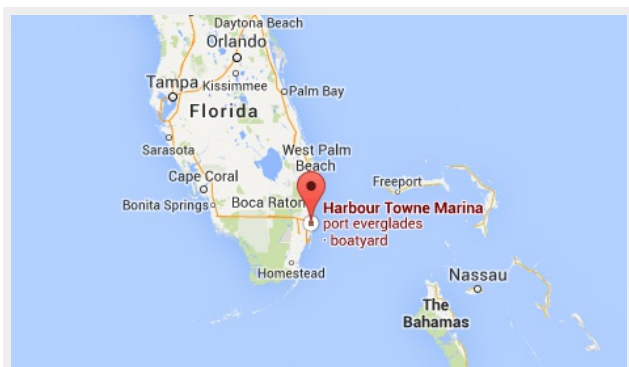
USA: +1(954)274-4435

Office hours

Monday – Saturday: **9:00 - 21:00** EDT

Sunday: **closed**

Address



Harbour Towne Marina, 850 NE 3rd St,
STE 213, Dania, FL 33004