

THE TREASURE CHEST — MAINSHIP



Судостроитель: MAINSHIP

Год постройки: 2005

Модель: Траулер

Цена: ЦЕНА ЯХТЫ ПО ЗАПРОСУ

Местонахождение: United States

Длина общая: 34' 0" (10.36m)

Ширина: 14' 3" (4.34m)

Макс. осадка: 3' 4" (1.02m)

Купить The Treasure Chest — MAINSHIP а также выбрать подходящую вам яхту из нашего каталога яхт вам поможет опытный яхтенный брокер Андрей Шестаков. На сегодняшний день компания Shestakov Yacht Sales Inc. имеет большое количество яхт в собственном списке продаж, а также тесно сотрудничает со всеми крупными яхтенными производителями по всему миру.

Для того чтобы купить яхту The Treasure Chest — MAINSHIP а также проконсультироваться по любому вопросу связанному с покупкой, продажей, чартером яхт позвоните по телефону **+7(918)465-66-44**.

ОГЛАВЛЕНИЕ

ОГЛАВЛЕНИЕ	2
ХАРАКТЕРИСТИКИ	6
Обзор	6
Основная информация	6
Размеры	6
Скорость, вместимость и масса	6
Размещение	7
Корпус и палуба	7
Информация о двигателе	7
ПОДРОБНОЕ ОПИСАНИЕ	8
Accommodations and Layout	8
Electronics and Navigation	8
Electrical Systems	9
Engine and Mechanical	9
Deck, Hull and Construction	10
Исключения	10
Отказ от ответственности	10
ФОТОГРАФИИ	12
34 Mainship Trawler	12
34 Mainship Trawler	12
34 Mainship Trawler	12
34 Mainship Trawler	12
34 Mainship Trawler	12
34 Mainship Trawler	12
34 Mainship Trawler	13
34 Mainship Trawler	13
34 Mainship Trawler	13
34 Mainship Trawler	13

34 Mainship Trawler	14
34 Mainship Trawler	14
34 Mainship Trawler	14
34 Mainship Trawler	14
34 Mainship Trawler	15
34 Mainship Trawler	15
34 Mainship Trawler	15
34 Mainship Trawler	15
34 Mainship Trawler	15
34 Mainship Trawler	15
34 Mainship Trawler	16
34 Mainship Trawler	16
34 Mainship Trawler	16
34 Mainship Trawler	16
34 Mainship Trawler	16
34 Mainship Trawler	16
34 Mainship Trawler	17
34 Mainship Trawler	17
34 Mainship Trawler	17
34 Mainship Trawler	17
34 Mainship Trawler	17
34 Mainship Trawler	17
34 Mainship Trawler	17
34 Mainship Trawler	18
34 Mainship Trawler	18
34 Mainship Trawler	18
34 Mainship Trawler	18
34 Mainship Trawler	18
34 Mainship Trawler	18
34 Mainship Trawler	18
34 Mainship Trawler	19

34 Mainship Trawler	19
34 Mainship Trawler	19
34 Mainship Trawler	19
34 Mainship Trawler	19
34 Mainship Trawler	19
34 Mainship Trawler	20
34 Mainship Trawler	20
34 Mainship Trawler	20
34 Mainship Trawler	20
34 Mainship Trawler	21
34 Mainship Trawler	21
34 Mainship Trawler	21
34 Mainship Trawler	21
34 Mainship Trawler	22
34 Mainship Trawler	22
34 Mainship Trawler	22
34 Mainship Trawler	22
34 Mainship Trawler	23
34 Mainship Trawler	23
34 Mainship Trawler	23
34 Mainship Trawler	23
34 Mainship Trawler	23
34 Mainship Trawler	23
34 Mainship Trawler	24
34 Mainship Trawler	24
34 Mainship Trawler	24
34 Mainship Trawler	24
34 Mainship Trawler	24
34 Mainship Trawler	24
34 Mainship Trawler	24

КОНТАКТЫ	25
-----	-----
Контактная информация	25
-----	-----
Телефоны	25
-----	-----
Время работы	25
-----	-----
Адрес	25
-----	-----

ХАРАКТЕРИСТИКИ

Обзор

It would be hard to find a 34 Mainship Trawler that has seen better care and that is more turnkey than "The Treasure Chest." Owned by a knowledgeable owner and professionally maintained, this 34 benefits from living in a **covered slip** on the Upper Chesapeake Bay. Her single 370hp Yanmar provides economical cruising and an abundance of space in the engine room. Outfitted with **Bow and Stern Thrusters** and a **custom cockpit station** with throttle and thruster controls she is amazingly easy to handle around the dock, transiting locks and in tight fairways. "The Treasure Chest" has a gleaming topside gelcoat and a Claret Red **Imron Painted hull** side that causes her to often to be mistaken as a new boat! With **additional features including a new generator (10 hours), new Garmin Electronics, custom bridge upholstery, new AGM batteries (\$\$\$), totally stripped and redone bottom, new salon AC, new upgraded alternator, starter and more** she is a total standout and a not to be missed boat for anyone looking at 34 Mainships or trawlers in this size range. Winterized but still in the water under shed, "The Treasure Chest" is a pleasure to show so call Listing Broker today for an appointment to come and see her!

Основная информация

Тип судна: Траулер

Модельный год: 2005

Год постройки: 2005

Страна: United States

Размеры

Длина общая: 34' 0" (10.36m)

Длина палубы: 38' 10" (11.84m)

Ширина: 14' 3" (4.34m)

Макс. осадка: 3' 4" (1.02m)

Трапы: 15' 0" (4.57m)

Скорость, вместимость и масса

Водоизмещение: 20000 Pounds

Вместимость воды: 70 Gallons

Вместимость сточного бака: 34 Gallons

Объем топливного бака: 250 Gallons

Размещение

Всего кают: 1

Корпус и палуба

Материал корпуса: Fiberglass

Цвет корпуса: Red

Информация о двигателе

Производитель: Yanmar

Модель: 370

Тип двигателя: Inboard

Тип топлива: Diesel

ПОДРОБНОЕ ОПИСАНИЕ

Accommodations and Layout

"The Treasure Chest" is an unbelievably roomy mid 30' boat. The design affords for a covered aft cockpit, walk around side decks, a huge flybridge with abundant seating, and that's just on the outside! Inside there is a double door entry into a salon with sleeper sofa, two chairs and a table opposite, easy to access side deck entry door forward, a full featured galley, head with entry from the companionway and private door from the stateroom, large stall shower and a centerline double berth in the master with access from either side! The interior is finished in cherry wood with a synthetic teak and holly sole in the galley and head. The salon features a neutral carpet, ultra leather couch, phantom screen for aft doors, opening side windows, wood blinds and a new TV and stereo. The deletion of the lower helm on this boat makes the salon feel larger and more open. Corian countertops are used in the galley which also has a new microwave oven. The head was greatly improved on with the replacement of the very small factory provided toilet with a new electronic fresh water head. The black water hoses were also replaced at the same time.

- Solid Surface Galley Countertops with Stainless Steel Undermount Sink
- Under counter Refrigerator/Freezer
- Two Burner Stove Top
- New Stainless Steel Sharp Carousel Microwave
- Opening Center Windshield for Ventilation
- Sliding Salon Windows with Screens
- Double Aft Doors from Cockpit to Salon with Rollaway Phantom Screen
- Salon Side Deck Door with Screen
- New Electric Freshwater Marine Head with Elongated Bowl
- Solid Surface Vanity Top with Sink in Head
- Stall Shower with Built In Seat
- Brand New Salon AC unit
- Air Conditioning and Reverse Cycle Heat with Digital Controls
- New Vizio Flat Screen TV in Salon

Electronics and Navigation

- New Garmin 7212 Touchscreen Color Chartplotter/GPS/Display
- New Garmin Autopilot with Upgraded Pump to Accommodate Garmin Auto Guidance
- Garmin Auto Guidance (just point to where you want to go and it will auto plot the course and take you there, that easy!)
- New Garmin Aft Facing Camera
- New Garmin GHS10 Command Mic VHF Radio
- New Garmin VHF Radio External Speaker
- Raymarine C80 Color Chartplotter/GPS/Radar
- Raymarine Radome Radar

- New Fusion Stereo with Bluetooth and JBL Marine Speakers
- Bow and Stern Thruster Controls (Flybridge Helm and Custom Cockpit Station)
- Electronic Gear/Throttle Control (Flybridge Helm and Custom Cockpit Station)
- Compass
- Trim Tabs
- New USB Charging Port at Flybridge Helm
- 12v DC Charging Plug
- Full Analog Gauges
- High Water Warning Light at Helm
- Bilge Pump Warning Lights at Helm
- Horn
- Windlass Control at Helm
- Automatic Fire Extinguishing System Alarm Panel at Helm

Electrical Systems

- New MasPower Generator in Sound Shield (10 hours)
- All new Life Line AGM batteries and battery charger
- Separate Battery Banks with 8D for bow thruster, 8D for house battery, two 27's in series for a 24Volt Stern Thruster, one 31 for the starter and generator
- Dual 30amp Shorepower Service
- (2) 30amp Shorepower Cords
- Charles Marine Isolation Transformer
- AC and DC breaker panels
- Battery Switches

Engine and Mechanical

- Fully Serviced 370hp Yanmar Diesel Engine with easy access to front back and all sides
- New Upgraded Alternator
- New Starter
- Dripless Shaft Seal
- Racor Fuel Filter
- Fuel Tank Sight Gauge
- Oil Exchange System
- Grocco Sea Strainers
- Pressurized Freshwater Pump
- Hydraulic Steering
- Trim Tab Pump
- Engine Room Lighting
- Engine Room Freshwater Spigot
- Engine Room Automatic Fire Suppression System

- Bilge Pumps

Deck, Hull and Construction

- Bottom taken down to fiberglass, faired, barrier coated and painted with three coats of ablative paint
- Stern Thruster added
- Bow Thruster Rebuilt and upgraded
- Custom Cockpit Station added with Bow and Stern Thruster Controls and Electronic Gear and Throttle Control
- Propeller Reconditioned
- Imron Hull Side Paint (entire boat waxed and topsides compounded and waxed Oct. '18)
- Swim Platform
- Swim Ladder
- Transom Hot and Cold Water Shower
- Transom Door
- Extended Bridge Overhang for Shade and Protection of Cockpit
- Custom Canvas Cover for Cockpit Station
- Full Four Sided Canvas Enclosure with EZ2CY Front Panels
- Hinged Radar Mast
- Radar Mast Mounted Spreader Lights
- Blue LED Deck Lighting
- Walk Around Side Decks
- Newmar Anchor Windlass
- Chain and Rope Anchor Rode
- Plow Anchor
- Bow Sampson Post
- Windshield and Side Quarter Canvas Covers
- Bow Fender Holders
- Side Deck Access Door From Starboard Salon

Исключения

При продаже яхты исключаются личные вещи владельца.

Отказ от ответственности

Компания предоставляет описание судна или яхты добросовестно, но не может гарантировать точность этой информации, а также не ручается за техническое состояние. Покупатель должен проинструктировать своих агентов или оценщиков исследовать представленную информацию более подробно, по собственному желанию. Продажа судна или яхты, изменение цены или снятие с продажи будет происходить без

предварительного уведомления.

ФОТОГРАФИИ

34 Mainship Trawler



34 Mainship Trawler



34 Mainship Trawler



34 Mainship Trawler



34 Mainship Trawler



34 Mainship Trawler



34 Mainship Trawler



34 Mainship Trawler



34 Mainship Trawler



34 Mainship Trawler



34 Mainship Trawler



34 Mainship Trawler



34 Mainship Trawler



34 Mainship Trawler



34 Mainship Trawler



34 Mainship Trawler



34 Mainship Trawler



34 Mainship Trawler



34 Mainship Trawler



34 Mainship Trawler



34 Mainship Trawler



34 Mainship Trawler



34 Mainship Trawler



34 Mainship Trawler



34 Mainship Trawler



34 Mainship Trawler



34 Mainship Trawler



34 Mainship Trawler



34 Mainship Trawler



34 Mainship Trawler



34 Mainship Trawler



34 Mainship Trawler



34 Mainship Trawler



34 Mainship Trawler



34 Mainship Trawler



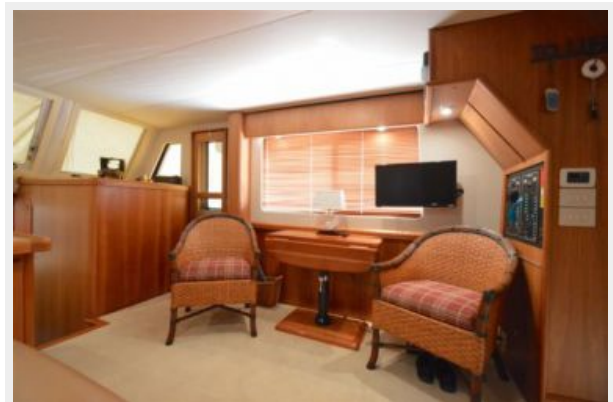
34 Mainship Trawler



34 Mainship Trawler



34 Mainship Trawler



34 Mainship Trawler



34 Mainship Trawler



34 Mainship Trawler



34 Mainship Trawler



34 Mainship Trawler



34 Mainship Trawler



34 Mainship Trawler



34 Mainship Trawler



34 Mainship Trawler

34 Mainship Trawler



34 Mainship Trawler



34 Mainship Trawler



34 Mainship Trawler



34 Mainship Trawler



34 Mainship Trawler



34 Mainship Trawler



34 Mainship Trawler



34 Mainship Trawler



34 Mainship Trawler



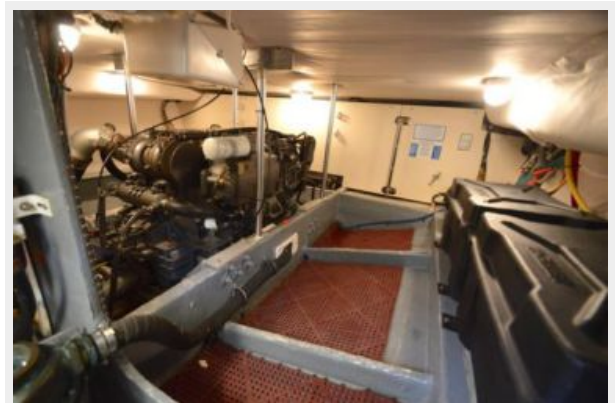
34 Mainship Trawler



34 Mainship Trawler



34 Mainship Trawler



34 Mainship Trawler



34 Mainship Trawler



34 Mainship Trawler



34 Mainship Trawler



34 Mainship Trawler



34 Mainship Trawler



34 Mainship Trawler



34 Mainship Trawler



КОНТАКТЫ

Андрей Шестаков (Andrey Shestakov) – ведущий яхтенный брокер отдела продаж яхт и судов компании Shestakov Yacht Sales Inc. Официальный представитель Shestakov Yacht Sales Inc. для русскоговорящих клиентов в центральном офисе компании в Майами/Форт Лодердейл/Флорида/США.

Контактная информация

Email: andrey@shestakovyachtsales.com

Web: shestakovyachtsales.com

Телефоны

Краснодарский край: **+7(918)465-66-44**

США, Майами, Флорида: **+1(954)274-4435**

Время работы

Понедельник – Суббота: **9:00 - 21:00**
EDT

Воскресенье: **Закрито**

Адрес



Harbour Towne Marina, 850 NE 3rd St,
STE 213, Dania, FL 33004