

## DEEP SHIP



**Year Built:** 2014

**Model:** Boats

**Price:** PRICE ON APPLICATION

**LOA:** 32' (9.75mm)

**Beam:** 9.83

**Max Draft:** 1' 11" (0.58mm)

**Cruise Speed:** 44 Knots Kts. (51 MPH)

**Max Speed:** 55 Knots Kts. (63 MPH)

Our experienced yacht broker, Andrey Shestakov, will help you choose and buy a yacht that best suits your needs **Deep Ship** — n/a from our catalogue. Presently, at Shestakov Yacht Sales Inc., we have a wide variety of yachts available on our sale's list. We also work in close contact with all the big yacht manufacturers from all over the world.

If you would like to buy a yacht **Deep Ship** — n/a or would like help answering any questions concerning purchasing, selling or chartering a yacht, please call **+1(954)274-4435**

---

# TABLE OF CONTENTS

---

TABLE OF CONTENTS	2
SPECIFICATIONS	3
Overview	3
Basic Information	3
Dimensions	3
Speed, Capacities and Weight	4
Accommodations	4
Hull and Deck Information	4
Engine Information	4
PHOTOS	5
CONTACTS	12
Contact details	12
Telephones	12
Office hours	12
Address	12

---

# SPECIFICATIONS

---

## Overview

---

DEEP SHIP is a well equipped and high powered version of Intrepids' well-received 327 Center Console. Fitted out with a pair of low 335 hour Yamaha 350's she can reach speeds well in excess of 55 knots. Engine warranty until 8/26/2018. Her equipment package is loaded with options and includes a GOST tracking system for owner peace of mind. A gorgeous paint job, clean and ready to go with no history of storm damage or insurance claims.

**Yet another price reduction! Lowest priced, best equipped 2014 Intrepid on the Market!**

**Motivated Seller says...I want this to be the next 32 Intrepid sold!**

**Twin Yamaha 350's with 346 hours, GOST security system July 2018, New Engine shifter control head**

**Garmin electronics, stored under cover or with full boat cover**

**Excellent condition, used as a family boat, no hard fishing**

**Never run hard....Won't last long...**

## Basic Information

---

**Category:** Boats

**Sub Category:** Center Console

**Model Year:** 2014

**Year Built:** 2014

## Dimensions

---

**LOA:** 32' (9.75mm)

**Beam:** 9.83

**Max Draft:** 1' 11" (0.58mm)

---

## Speed, Capacities and Weight

---

**Cruise Speed:** 44 Knots Kts. (51 MPH)

**Max Speed:** 55 Knots Kts. (63 MPH)

**Water Capacity:** 25 Gallons

**Holding Tank:** 8 Gal Gallons

**Fuel Capacity:** 278 Gal Gallons

---

## Accommodations

---

**Total Heads:** 1

---

## Hull and Deck Information

---

**Hull Material:** Fiberglass

**Hull Configuration:** Deep Vee

---

## Engine Information

---

**Engines:** 2

**Manufacturer:** Yamaha

**Engine Type:** Outboard

**Fuel Type:** Gas

# PHOTOS









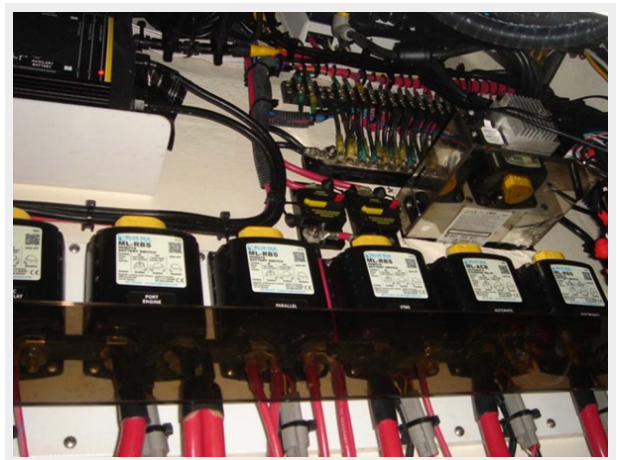
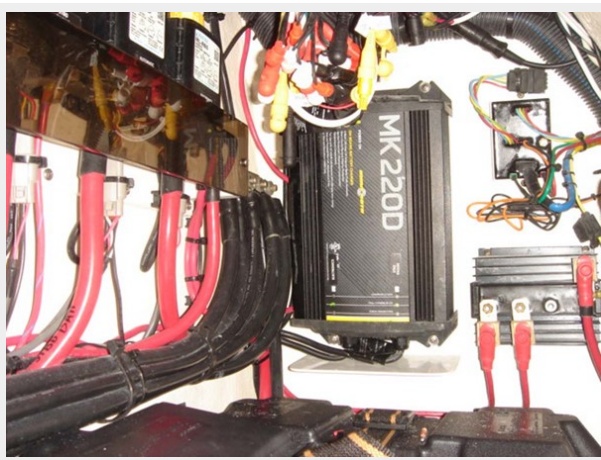












---

# CONTACTS

---

Andrey Shestakov, leading yacht broker of the sales department of Shestakov Yacht Sales Inc. Shestakov Yacht Sales Inc., the official representative of the Miami/Fort Lauderdale FL headquarters.

---

## Contact details

---

Email: [andrey@shestakovyachtsales.com](mailto:andrey@shestakovyachtsales.com)

Web: [shestakovyachtsales.com/en/](http://shestakovyachtsales.com/en/)

---

## Telephones

---

USA: +1(954)274-4435

---

## Office hours

---

Monday – Saturday: **9:00 - 21:00** EDT

Sunday: **closed**

---

## Address

---



Harbour Towne Marina, 850 NE 3rd St,  
STE 213, Dania, FL 33004