

LAST BOAT IV



Year Built: 1999

Model: Motor Yacht

Price: PRICE ON APPLICATION

LOA: 42' (12.8mm)

Beam: 14.5

Max Draft: 4' 11" (1.5mm)

Cruise Speed: 17 Knots Kts. (20 MPH)

Max Speed: 25 Knots Kts. (29 MPH)

Our experienced yacht broker, Andrey Shestakov, will help you choose and buy a yacht that best suits your needs **LAST BOAT IV** — n/a from our catalogue. Presently, at Shestakov Yacht Sales Inc., we have a wide variety of yachts available on our sale's list. We also work in close contact with all the big yacht manufacturers from all over the world.

If you would like to buy a yacht **LAST BOAT IV** — n/a or would like help answering any questions concerning purchasing, selling or chartering a yacht, please call **+1(954)274-4435**

TABLE OF CONTENTS

TABLE OF CONTENTS	2
SPECIFICATIONS	3
Overview	3
Basic Information	3
Dimensions	3
Speed, Capacities and Weight	3
Accommodations	3
Hull and Deck Information	4
Engine Information	4
PHOTOS	5
CONTACTS	14
Contact details	14
Telephones	14
Office hours	14
Address	14

SPECIFICATIONS

Overview

New arrival to market. Keel laid in 1999 and superstructure finished in 2002. Proven, rugged Wesmac, solid fiberglass hull, which has been a Downeast, gentleman's fishing boat. Has full amenities as a cruiser, but finished in a sport, fishing style. Not a full-finished wood interior, but rather a functional, comfortable cruising - fishing boat. Single Caterpillar 3406E diesel rated at 800 Hp with ZF gears. Northern Lights 7Kw generator powered by a Lugger diesel. Flybridge model. Master cabin forward and a twin bunk room farther aft. Full galley arrangement. Full head with shower. Spacious wheel house. Large cockpit and full flybridge helm station. One owner boat, built for an experienced, salty fisherman. Boat is launched with new bottom paint and is available for showing. We encourage your visit and inspection to see this no-nonsense, comfortable, seaworthy boat. Photos (with 3- exceptions) are 2018 Current.

Basic Information

Category: Motor Yacht

Model Year: 1999

Year Built: 1999

Dimensions

LOA: 42' (12.8mm)

LWL: 40' (12.19mm)

Beam: 14.5

Max Draft: 4' 11" (1.5mm)

Speed, Capacities and Weight

Cruise Speed: 17 Knots Kts. (20 MPH)

Max Speed: 25 Knots Kts. (29 MPH)

Water Capacity: 100 Gallons

Fuel Capacity: 200 Gal Gallons

Accommodations

Total Cabins: 2

Hull and Deck Information

Hull Material: Fiberglass

Engine Information

Engines: 1

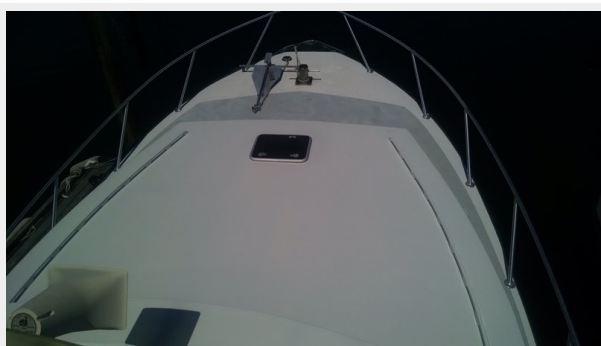
Manufacturer: Caterpillar

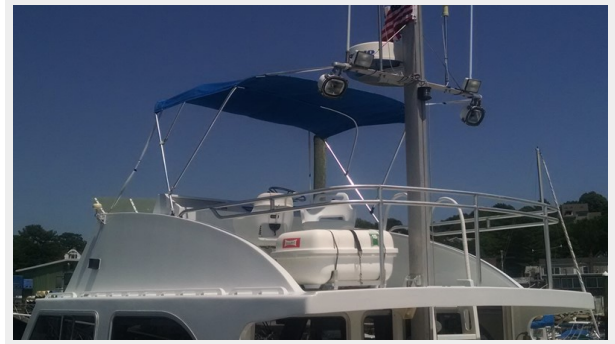
Engine Type: Inboard

Fuel Type: Diesel

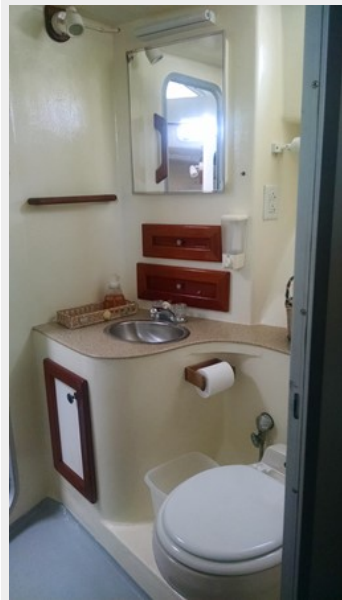
PHOTOS

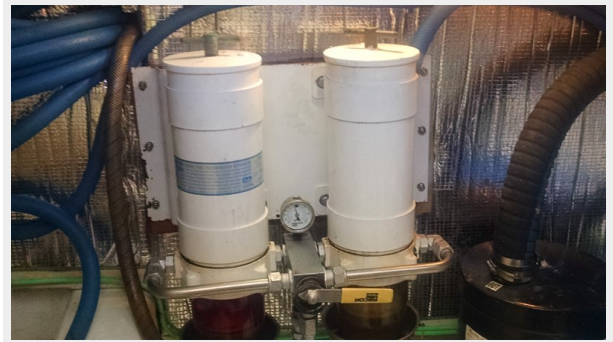




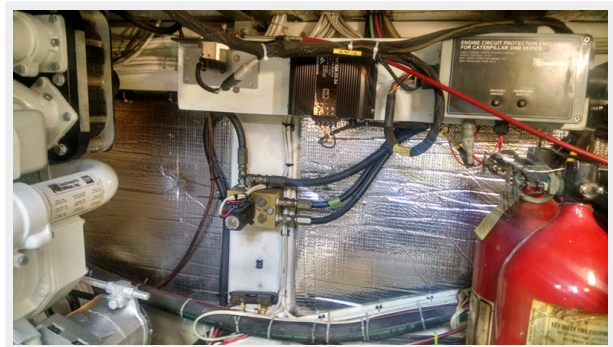
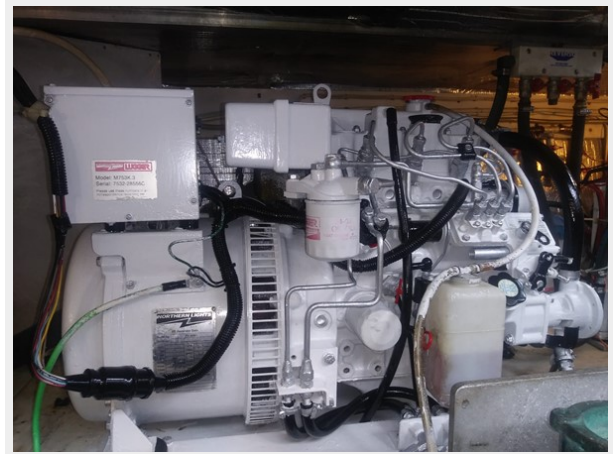
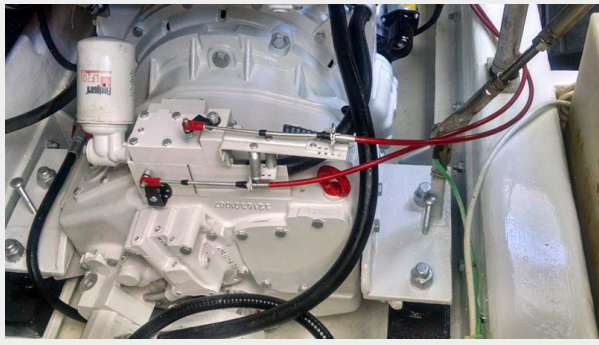














CONTACTS

Andrey Shestakov, leading yacht broker of the sales department of Shestakov Yacht Sales Inc. Shestakov Yacht Sales Inc., the official representative of the Miami/Fort Lauderdale FL headquarters.

Contact details

Email: andrey@shestakovyachtsales.com

Web: shestakovyachtsales.com/en/

Telephones

USA: +1(954)274-4435

Office hours

Monday – Saturday: **9:00 - 21:00** EDT

Sunday: **closed**

Address



Harbour Towne Marina, 850 NE 3rd St,
STE 213, Dania, FL 33004