

WINE KNOT — AZIMUT



Судостроитель: [AZIMUT](#)

Год постройки: 2013

Модель: Моторная яхта

Цена: **ЦЕНА ЯХТЫ ПО ЗАПРОСУ**

Местонахождение: United States

Длина общая: 70' 0" (21.34m)

Ширина: 18' 3" (5.56m)

Макс. осадка: 5' 4" (1.63m)

Купить **WINE KNOT — AZIMUT** а также выбрать подходящую вам яхту из нашего каталога яхт вам поможет опытный яхтенный брокер Андрей Шестаков. На сегодняшний день компания **Shestakov Yacht Sales Inc.** имеет большое количество яхт в собственном списке продаж, а также тесно сотрудничает со всеми крупными яхтенными производителями по всему миру.

Для того чтобы купить яхту **WINE KNOT — AZIMUT** а также проконсультироваться по любому вопросу связанному с покупкой, продажей, чартером яхт позвоните по телефону **+7(918)465-66-44**.

ОГЛАВЛЕНИЕ

ОГЛАВЛЕНИЕ	2
ХАРАКТЕРИСТИКИ	5
Основная информация	5
Размеры	5
Скорость, вместимость и масса	5
Размещение	5
Корпус и палуба	5
Информация о двигателе	6
ПОДРОБНОЕ ОПИСАНИЕ	7
Vessel Highlights	7
Salon	7
Galley	8
Master Stateroom with En Suite Head	8
VIP Stateroom with En Suite Head	8
Guest Stateroom and Head to Port	8
Guest Stateroom and Head to Starboard	9
Crew Quarters	9
Flybridge Helm	9
Flybridge Equipment	10
Flybridge Aft Deck	10
Forward Deck	10
Electronics and Navigational Equipment	10
Deck and Cockpit Equipment	11
Transom	11
Electrical Equipment	11
Engine and Mechanical Equipment	12
Исключения	12
Отказ от ответственности	12

ФОТОГРАФИИ	14
Salon	14
Salon	14
Dinette	14
Galley	14
Master Stateroom	14
Master Stateroom	14
Master Head	15
Master Head	15
VIP En Suite Head	15
VIP Stateroom	15
Guest Stateroom - Starboard	15
Guest En Suite Head	15
Guest Stateroom - Port	16
Lower Helm Seating	16
Lower Helm - Steering and Navigation	16
Upper Helm	16
Flybridge	16
Flybridge	16
Flybridge	17
Flybridge Tender Storage - Nautica Tender	17
Flybridge Stairs to Cockpit	17
Cockpit	17
Cockpit	17
Transom	17
Access to Crew Quarters and Engine Room	18
Crew Quarters	18
Crew Head	18
Crew Quarters	18

Crew Head	19
Engine Room	19
Engine Room	19
Bow	19
Bow - Sun Pads	19
Bow - Windlass	19
WINE KNOT	20
WINE KNOT	20
WINE KNOT	20
КОНТАКТЫ	21
Контактная информация	21
Телефоны	21
Время работы	21
Адрес	21

ХАРАКТЕРИСТИКИ

Основная информация

Тип судна: Моторная яхта

Модельный год: 2014

Год постройки: 2013

Страна: United States

Размеры

Длина общая: 70' 0" (21.34m)

Ширина: 18' 3" (5.56m)

Макс. осадка: 5' 4" (1.63m)

Скорость, вместимость и масса

Водоизмещение: 90400 Pounds

Вместимость воды: 317 Gallons

Вместимость сточного бака: 119 Gallons Объем топливного бака: 1268 Gallons

Размещение

Всего кают: 4

Всего ком. состава: 4

Каюты экипажа: 1

Корпус и палуба

Материал корпуса: Fiberglass

Информация о двигателе

Двигатели: 2

Производитель: MAN

Модель: V12

Тип двигателя: Inboard

Тип топлива: Diesel

ПОДРОБНОЕ ОПИСАНИЕ

Vessel Highlights

THE **2014 AZIMUT YACHTS 70' FLYBRIDGE MOTOR YACHT WINE KNOT** is in pristine condition. Featuring a very accommodating four stateroom, four head layout with crew quarters aft. She showcases stunning interior details throughout including custom Zebrano wood joinery. This **AZIMUT YACHTS 70'** boasts a head-turning profile with a Tenerife Blue Hull and Bright Arctic white gel coat. While underway, you'll find that the **WINE KNOT** delivers an exceptionally stable ride thanks to her two SeaKeeper Gyros. Powered by twin MAN Engines at 1360 hp each, this **AZIMUT YACHTS 70' FLYBRIDGE** offers stellar performance. Her 1000 hour service was just completed. Additional highlights on board **WINE KNOT** include: a hydraulic swim platform, underwater lights and a 2013 Nautica Jet Tender. If you are in the market for a well-maintained **2014 AZIMUT YACHTS 70' FLYBRIDGE MOTOR YACHT, WINE KNOT** deserves your inspection today.

VESSEL HIGHLIGHTS

- **Twin MAN Engines 1360 hp each (1000 hour service completed)**
- **4 Stateroom/4 Head Layout with Crew Quarters Aft**
- **Custom Zebrano wood joinery interior throughout**
- **Tenerife Blue Hull with Bright Arctic White gel coat**
- **(2) SeaKeeper Gyro's**
- **RayMarine Electronics, Video Camera system, Auto-pilot, Radar, SAT TV, KVH Tracphone and Tracvision**
- **Seafari Watermaker**
- **Hydraulic Swim Platform**
- **Underwater lights**
- **2013 Nautica Jet Tender**

Salon

- Custom Zebrano dark mahogany woodwork
- Custom wine cooler and cabinetry
- Custom U-shaped leather convertible sofa with custom stitching and pullout bed
- Oversized leather ottoman/coffee table
- Upgraded audio/visual equipment with Samsung 46" flatscreen TV in a custom hi/lo cabinet, Sonas playbar, Pioneer speakers, stereo with Bluetooth and Unidock, Subwoofer amplifiers, Samsung Blu-Ray player, DirectTV Receiver
- Custom window treatments with blinds and curtains for salon door
- Blinds operated by electric remote

- Gost Phantom security system
- Vinotemp wine fridge

Galley

- Waeco Refrigerator/freezer
- (4) Burner Miele inductor cooktop
- Miele convection oven/microwave
- Miele dishwasher
- Dark Emperador marble counter tops
- Franke Stainless steel sink with nozzle and wood cutting boards
- U-shaped leather dinette to port
- Zebrano dark mahogany flooring
- Miele Touchtronic W3033 washer (located in companionway to starboard)
- Miele Touchtronic T8013C Dryer (located in companionway to port)

Master Stateroom with En Suite Head

- Custom king berth with upgraded mattress
- Custom overhead soffit with lighting
- Storage and safe under berth
- Samsung LED 40" TV, Sonas playbars, DirectTV Receiver
- (4) Portholes that can be opened
- (8) Windows
- Custom window treatments with Venetian blinds and electric blackout blinds
- Private bath with custom Pallisandro marble vanity top, full size shower, double sinks, custom fixtures, mirrored medicine cabinet and port opening with blinds

VIP Stateroom with En Suite Head

- Queen berth with upholstered base, upgraded mattress and storage below
- (2) Portholes that can be opened
- (8) Windows (3 to port, 4 to starboard, and 1 in head)
- Samsung 26" LED TV, Sonas playbar, DirectTV Receiver
- Custom pleated blinds
- Private bath with custom Pallisandro marble vanity top, full size shower, large sink, custom fixtures, mirrored medicine cabinet and port opening with blinds

Guest Stateroom and Head to Port

- Upgraded double berth
- Opening port lights
- Custom Venetian blinds
- Large hanging locker with lights
- (2) Large storage cabinets above berth
- Samsung 21" TV, Direct TV receiver, Sonas soundbar
- Private bath with custom Pallisandro marble vanity top, full size shower, large sink, custom fixtures, mirrored medicine cabinet and port opening with blinds

Guest Stateroom and Head to Starboard

- Twin berths with filler board and cushion
- Large hanging locker with lights
- (2) Large storage cabinets above berths
- Samsung 18" LED TV, DirectTV Receiver, Sonas soundbar
- Custom Venetian blinds
- Private bath with custom Pallisandro marble vanity top, full size shower, large sink, custom fixtures, mirrored medicine cabinet and port opening with blinds

Crew Quarters

- Captain's cabin with full berth with upgraded latex mattress
- Crew cabin with single berth with upgraded latex mattress
- Samsung TV, DirectTV receiver, Sonos playbar

Flybridge Helm

- Azimut Montronic display
- Raymarine Dual G Series Radar/ Plotter
- Raymarine ST6002 Autopilot
- (2) Raymarine RAY240 VHF with repeaters
- Raymarine ST60 depth/speed
- Raymarine FLIR nightvision
- ACR EPIRB
- Side Power bow and stern thrusters
- Electronic remote control for throttles
- Windlass chain counter
- Trim tab controls and indicators
- Xenta Joy Stick
- Horn single trumpet electric

Flybridge Equipment

- Access from cockpit stairway
- Access hinged hatch opening
- Teak table with high gloss finish and deck chairs
- Bar with sink, wood cutting board, Vitirilo refrigerator, Raritan icemaker and Kenyon electric grill
- Large sunpad lounges with cushions, forward
- Fusion Stereo MS-IP700 AM/FM/Sirius/iPod
- (9) JBL outdoor speakers
- Fire fighting pump controls
- Jabsco electric searchlight control
- 6-person life raft with EPIRB
- Teak decks
- (2) Flood light
- Sunbrella custom canvas covers for all ext furniture, wet bar and sun pads

Flybridge Aft Deck

- 2013 Nautica jet tender
- Custom tender chocks
- Bridge crane for tender
- Teak Decks

Forward Deck

- 2500W Lofrans 2500 anchor winch
- Anchor winch controls
- Anchor chain with washdown
- Anchor chain and fender compartment
- Teak decks
- Side windows and windshield net covers
- Bow sunpads with kick up headrest
- Sunlounge cushions and glass holders

Electronics and Navigational Equipment

- Raymarine GS electronics package with (4) displays
- Evolution Autopilot
- Raymarine AIS system
- Raymarine DSM 300 color sounder

- Raymic 260 handset
- Remote joystick
- Multitask display with alarms for bow bilge, engine bilge, helm compartment bilge, grey water high level, black water high level, Racor filters, navigation lights, shore
- Chain counter Quick
- (2) Seakeeper Gryo 8000 stabilizers controls
- Adjustable steering wheel in stainless steel and cherry wood
- Xenta Joy Stick
- Activation for bow anchor winch, navigation lights, bow and stern thruster, windshield wiper and washer, trim tabs, fire fighting pump
- (4) Raymarine video camera's, aft, flybridge, engine room, and night vision
- Deep wave router
- V Sat V7-IP system with 2 domes, HD7 plus
- Leather upholstered helm seats with headrests

Deck and Cockpit Equipment

- Built-in U-shaped seating with cushions and storage below
- Teak table with high gloss finish
- Custom bar with Waeco refrigerator
- Samsung 32" TV with Direct TV, Apple TV and Sonos Playbar
- Sunbrella custom canvas covers for all exterior furniture and bar
- Deck winches
- Teak decks
- Marquipt sea stairs with mounts, port and starboard
- Cockpit boarding gates

Transom

- Access to cockpit from swim platform with 2 ladders
- Transom door to engine room
- (2) Electric warping winches
- Opacmare telescoping passerelle
- Hydraulic swim platform with teak decking
- Shower with hot and cold water
- Boarding ladder
- Underwater lights at transom

Electrical Equipment

- Racor fuel filters

- (2) Glendenning cablemasters
- Mastervolt 12v/25amp battery charger
- Wireless smoke detectors through out
- Custom installation for invertors, chargers, batteries, battery boxes
- (2) Additional weatherproof 110v outlets
- (6) Additional 110v outlets
- (6) Additional 12v outlets
- Central vacuum system

Engine and Mechanical Equipment

- (2) Seakeeper Gyro Stabilizers
- Twin Kohler Generators with sound shields (1742 hrs. / 1758 hrs.)
- Side Power bow and stern thrusters with variable speed and proportional deflection with S-Link system
- Xenta wireless yacht controller for engines and thrusters
- (2) 220v fans
- (2) 220v air extractors
- Racor fuel filters
- Algae-X fuel polishing system
- 3" Stainless Steel propeller shaft
- (2) Bronze 5-bladed propellers
- Custom modular watermaker
- Seafari mini H2O maker with remote control
- (2) 50 amp shore power cords
- Oil change system - 24volt pump servicing engines, generator and gears
- Fuel primer system - manual pumps on engines and generators
- Headhunter grey H2O tank
- Black water pump
- Bilge vacuum system eliminating any water in bilges
- Additional heavy duty sump pump
- (3) High definition color cameras
- Spare Props and Shafts

Исключения

При продаже яхты исключаются личные вещи владельца.

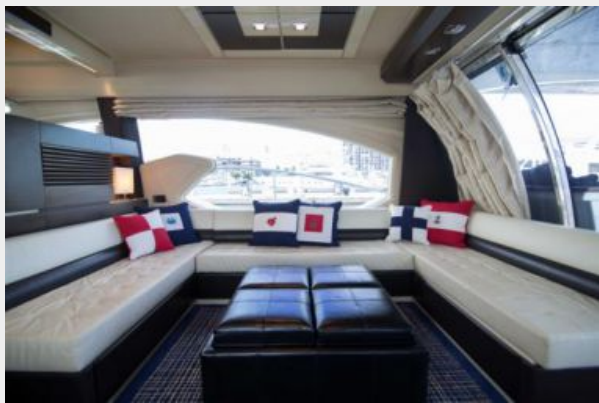
Отказ от ответственности

Компания предоставляет описание судна или яхты добросовестно, но не может гарантировать точность этой информации, а также не ручается за техническое

состояние. Покупатель должен проинструктировать своих агентов или оценщиков исследовать представленную информацию более подробно, по собственному желанию. Продажа судна или яхты, изменение цены или снятие с продажи будет происходить без предварительного уведомления.

ФОТОГРАФИИ

Salon



Salon



Dinette



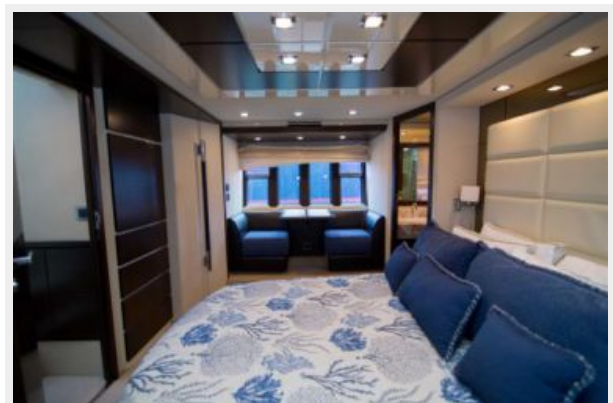
Galley



Master Stateroom



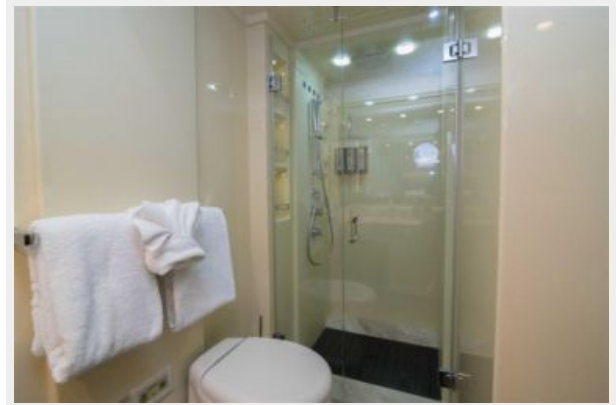
Master Stateroom



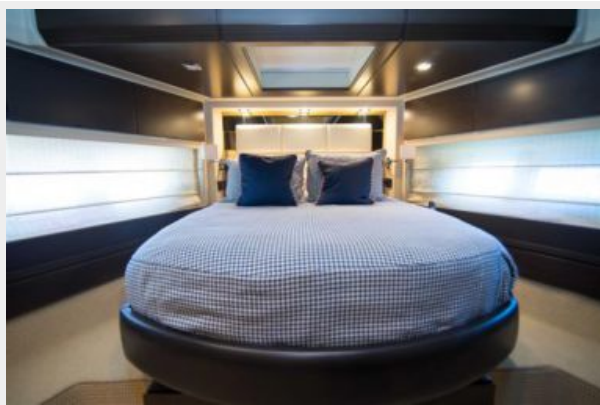
Master Head



Master Head



VIP Stateroom



VIP En Suite Head



Guest Stateroom - Starboard



Guest En Suite Head



Guest Stateroom - Port



Lower Helm Seating



Lower Helm - Steering and Navigation



Upper Helm



Flybridge



Flybridge



Flybridge



Flybridge Tender Storage - Nautica Tender



Flybridge Stairs to Cockpit



Cockpit



Cockpit



Transom



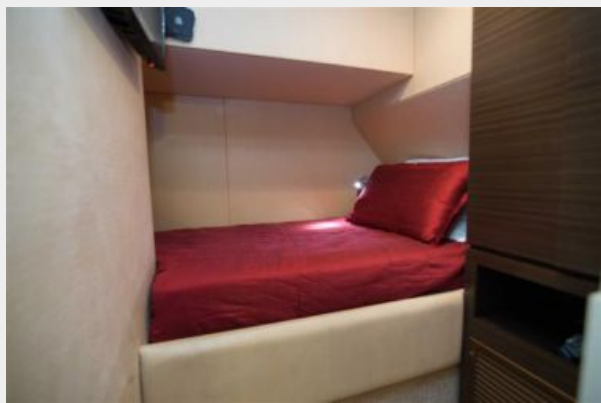
Access to Crew Quarters and Engine Room



Crew Quarters



Crew Quarters



Crew Head



Crew Head



Engine Room



Engine Room



Bow



Bow - Sun Pads



Bow - Windlass



WINE KNOT



WINE KNOT



WINE KNOT



КОНТАКТЫ

Андрей Шестаков (Andrey Shestakov) – ведущий яхтенный брокер отдела продаж яхт и судов компании Shestakov Yacht Sales Inc. Официальный представитель Shestakov Yacht Sales Inc. для русскоговорящих клиентов в центральном офисе компании в Майами/Форт Лодердейл/Флорида/США.

Контактная информация

Email: andrey@shestakovyachtsales.com

Web: shestakovyachtsales.com

Телефоны

Краснодарский край: **+7(918)465-66-44**

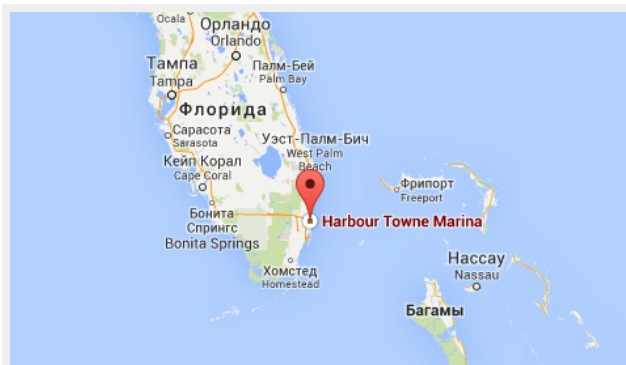
США, Майами, Флорида: **+1(954)274-4435**

Время работы

Понедельник – Суббота: **9:00 - 21:00**
EDT

Воскресенье: **Закрито**

Адрес



Harbour Towne Marina, 850 NE 3rd St,
STE 213, Dania, FL 33004