

C JEWEL — NORDLUND



Судостроитель: NORDLUND

Год постройки: 2003

Модель: SHELBY

Цена: ЦЕНА ЯХТЫ ПО ЗАПРОСУ

Местонахождение: United States

Длина общая: 114' 0" (34.75m)

Ширина: 24' 0" (7.32m)

Мин. осадка: 6' 6" (1.98m)

Купить **C JEWEL — NORDLUND** а также выбрать подходящую вам яхту из нашего каталога яхт вам поможет опытный яхтенный брокер Андрей Шестаков. На сегодняшний день компания **Shestakov Yacht Sales Inc.** имеет большое количество яхт в собственном списке продаж, а также тесно сотрудничает со всеми крупными яхтенными производителями по всему миру.

Для того чтобы купить яхту **C JEWEL — NORDLUND** а также проконсультироваться по любому вопросу связанному с покупкой, продажей, чартером яхт позвоните по телефону **+7(918)465-66-44**.

ОГЛАВЛЕНИЕ

ОГЛАВЛЕНИЕ	2
ХАРАКТЕРИСТИКИ	4
Обзор	4
Основная информация	4
Размеры	5
Скорость, вместимость и масса	5
Размещение	5
Корпус и палуба	5
Информация о двигателе	5
ПОДРОБНОЕ ОПИСАНИЕ	6
Walk Through Accommodations	6
Master Stateroom	8
Entertainment Electronics	8
Appliances	9
MTU Engines	10
Tankage	10
Steering System	11
Hydraulic System	11
Navigation/ Communication Electronics	11
Decks and Side Decks	12
Deck Equipment/ Ground Tackle & More	12
Deck/ Tender	13
Grey/ Black Water Systems	13
Ventilation/ Heating/ Air Conditioning	13
Domestic Water	14
Electrical System AC/ DC	14
Alarm/ Camera Monitoring System	15
Exclusions from Sale	15

Disclaimer	15
Исключения	16
Отказ от ответственности	16
ФОТОГРАФИИ	17
КОНТАКТЫ	23
Контактная информация	23
Телефоны	23
Время работы	23
Адрес	23

ХАРАКТЕРИСТИКИ

Обзор

Owner will consider ALL OFFERS!

Vessel in Washington State single asset LLC and 115' slip available with sale...

Major refit on both engines on the top end completed March 2019.

The finest maintained and equipped Nordlund available today. A discerning owner and a skipper who has loved and taken great care of "C Jewel" the way a yacht should be cared for. This design is one of a kind from Nordlund and the accommodations are elegant, spacious and beautiful. She accommodates up to six guests in three en-suite luxury staterooms and 5 crew members with en-suite cabins forward. She features a very large full beam sky lounge with port/starboard wing stations and cockpit controls for easy handling and docking. She is fully equipped and ready to cruise from Alaska to the Caribbean in grand style.

Naval architecture by Ed Monk / Tim Nolan Marine designs with the interior work from Pokela Designs and his uses of five different exotic kinds of wood from Bamboo, African Sapeli, English Sycamore, Pear to Ebony with many unique curves and custom features from Bow to Stern.

Any serious Nordlund buyer should not miss inspecting this exceptional and rare find; to truly appreciate the fine quality and workmanship and personal care throughout this vessel.

Основная информация

Тип судна: SHELBY

Подкатегория: Pilothouse

Модельный год: 2003

Год постройки: 2003

Год обновления: 2019

Вид обновления: Engines / Remodel interior

Страна: United States

Верх: Enclosed

Открытая палуба мостика: Да

Кубрик: Да

Размеры

Длина общая: 114' 0" (34.75m)	Длина по ватерлинии: 96' 3" (29.34m)
Ширина: 24' 0" (7.32m)	Мин. осадка: 6' 6" (1.98m)

Скорость, вместимость и масса

Водоизмещение: 199000 Pounds	Вместимость воды: 2160 Gallons
Вместимость сточного бака: 800 Gallons	Объем топливного бака: 5500 Gallons

Размещение

Всего кают: 3	Всего коек: 3
Спальные места: 10	Всего ком. состава: 4
Каюты экипажа: 5	Койки экипажа: 5
Спальных мест экипажа: 5	Комм. состав экипажа: 2

Корпус и палуба

Материал корпуса: Fiberglass	Дизайнер экстерьера: Ed Monk / Tim Nolan
Дизайнер интерьера: Pokela Designs	

Информация о двигателе

Двигатели: 2	Производитель: MTU
Модель: 16V2000	Тип двигателя: Inboard
Тип топлива: Diesel	

ПОДРОБНОЕ ОПИСАНИЕ

Walk Through Accommodations

This is a boat for an owner who wants to go places safely, and comfortable with all the amenities of a Mega Yacht. From the moment you step aboard the swim platform, you see the aft deck with a full beam 24' counter space/custom BBQ all at the transom, which is next to the access door to the utility/engine room transom door. From there you step up on either port or starboard step to the fully covered cockpit for morning coffee or alfresco dining around a polished granite oval table.

Interior Finish: Interior design is by Pokela Design, and joinery execution includes the use of English Sycamore, African Sapeli, Pearwood, Ebony wood, and bamboo. Countertops are granite. Joinery and cabinetry on the main decks have been refinished as part of the current refit and has a stunning appearance.

Main Deck Accommodations: A full custom galley area lies forward. This layout features a long fore and aft 'C' shaped dinette with a built-in custom wine cooler cabinet, immediately aft of the dinette that leads down to the crew accommodations. The galley has a center island with range cooktop, storage underneath, and a range hood over. Two built-in ovens, a large double NEW Sub Zero refrigerator/freezer an "L" shaped counter with a double sink, steamer alcove, and storage. A watertight exterior door immediately aft of the port counter's outboard leg and a narrow passageway aft of the exterior door that leads down three steps and through a door to the dining salon. An open passageway to starboard leads aft from the galley area and features a semi-circular stair leading up to the pilothouse area; a day head compartment opposite that is followed immediately by a long stem glass storage cabinet and three steps down aft that lead to the main deck vestibule. The vestibule features a semi-circular stairwell outboard leading down to the aft accommodations; a watertight exterior entry door immediately aft of the stairwell; and open access to a dining salon.

The dining salon features: a large fixed dining table that seats eight, built-in storage cabinets, a buffet/cabinet unit aft with a lower center portion that houses a 50' TV lift; and a decorative LED lighting fixture soffit worked into the overhead above the table.

The main salon follows the dining salon, the walls are clad with blonde English sycamore. The buffet/cabinet unit that separates the dining salon from the main salon aft features storage in a full height cabinet; an entertainment center in a full height cabinet; and a TV lift.

Storage cabinets are built to port and starboard underneath the windows, and wrap around to the aft bulkhead, and features a wet bar. An automatic double sliding door to the cockpit.

Lower Deck Accommodations: The forward most compartment in the bow is a chain locker, this can be accessed via a waterproof hatch in the foredeck, and via a watertight hatch in the chain locker aft bulkhead inside, accessed from the vessel interior. Access to the bow thruster compartment is through a watertight hatch in the forward most of the crew area. The forward most

crew cabin, separated from the chain locker by a watertight bulkhead, features stacked single berths to port, and storage and a hanging locker to starboard. Next aft, separated from the forward crew cabin by a watertight door, lies a crew lounge area with a large “L” shaped dinette to port and a small galley area with storage. A watertight hatch in the lounge sole provides access to the forward bilge compartment. An enclosed head lies immediately aft to starboard of the crew lounge and features a sink vanity, shower stall, and head. A short passageway leads aft from the crew lounge and provides access to crew cabins to port and to starboard, and to a staircase aft that leads up to the main deck at the forward end of the main deck galley. The crew cabin aft to port features stacked single berths, storage and a hanging locker, and access into a head compartment that lies to port of the crew lounge, and features a sink vanity, shower stall, and a marine toilet. The crew cabin to starboard aft appears to the Captain's and features a raised double berth, a small desk, locker and shelf storage, a hanging locker, and an enclosed head compartment with sink vanity, shower stall, and a marine toilet.

The next compartment aft, separated from the crew accommodations by a full bulkhead, is the master stateroom head. The head features a large walk-through shower stall, "his and hers" to port and starboard each featuring a large sink vanity with storage. The master stateroom itself follows, and features; an island King berth with storage and bilge compartment access below; The master includes full double hanging lockers and bureaus to port and to starboard; a large flat screen TV boxed in on the aft to port of and a large hinged entry door.

The master stateroom entry door opens onto a landing in the semi-circular stairwell that connects the main deck and lower deck. Three steps down from the landing lead to a large vestibule that features wall niches for beautiful art. Off the vestibule aft to starboard lies a gorgeous guest stateroom that features: a raised island double berth aft with storage underneath; lots of extra storage; a hanging locker, and a built-in TV forward; The head features a sink vanity with storage, a shower stall, and a head. A short passageway, fit with a watertight door at its aft, leads from guest stateroom into the engine room. Off the vestibule aft to port lies an additional guest stateroom that features: an island double berth forward with storage underneath; storage and a hanging locker, storage, and a built-in TV forward; and a head aft features a sink vanity with storage, a shower stall, and a marine head.

Engine room follows the guest staterooms. A watertight door in the engine room aft bulkhead leads to a full-beam control/utility room that features: two full washer/dryer units built in forward to port a toilet forward to port; an “L” shaped large work bench aft with storage cabinets above and (2) water maker system below; a full freezer built in aft and to starboard; access to a full beam steering compartment a second large workbench to with complete toolbox and storage below; and the main electrical control panel forward.

The full beam steering compartment that follows the control/utility room features various machinery and equipment, fire suppression equipment, and a large steering flat.

Access to bilge compartments forward of the engine room is through hatches in the lower deck, with those forward being the watertight type. Access to the bilge spaces in the engine room is through various grate-type deck plates, and access to the bilge spaces under the control/utility

room is through hatches.

Pilothouse: An amazing raised pilothouse with 360 - degree views, She has a stunning, nearly full beam helm console, with decorative semi-circular stairs to starboard that lead down to the main deck. The helm console is followed immediately by two Captain's chairs, along low storage cabinet follows the Captain's chairs, extending to port. An overhead decorative soffit with lighting and HVAC delivery lies above this storage cabinet. A large "U" shaped settee lies aft to port; double hinged exterior entry doors lie aft and a "U" shaped alcove with two leather chairs with leather ottomans with built-in storage underneath the windows.

Master Stateroom

Owners full beam stateroom:

Lavish accommodations are accessed down a private spiral staircase embellished with polished stainless handrails. Please see the brand new photos to appreciate the colors and rich theme.

- The curves of exotic woods and custom headboard above a full king island bed.
- His and Her - walk thru shower and two private vanities/heads
- Two large double hanging lockers
- 55" Samsung Flat Screen
- LED lighting

Entertainment Electronics

Main Salon:

- Marantz AV Surround Receiver SR7007
- Marantz CD Player CD5004
- Russound CA 6.4 6 zone/4 source Central Controller/Amplifier
- Samsung disc player
- Netgear NeoTV 550
- Sirius SR-H2000 Satellite Radio Tuner
- Direct TV+DVR
- Samsung 55" flat screen color TV

Pilot House:

- Marantz AV Surround Receiver NR1603

- Samsung disc player
- Samsung 46" flat screen color TV

Master Stateroom:

- Samsung 55" flat screen TV

Galley:

- One Viewsonic 22" flat screen TV
- Samsung disc player
- Sherwood Netboxx R-904N

Guest Staterooms:

- One each Toshiba 22" flat screen TV's

Crew Quarters:

- Three Viewsonic 15" flat screen TV's, and one 22" flat screen TV
- Netgear NeoTV 550
- Samsung disc player
- Shuttle DVD player

Appliances

Main galley equipment is as follows:

- Sub Zero Model BI-360/S/TH side-by-side refrigerator/freezer
- KitchenAid Model HBHS179BSS00 Convection/Microwave
- KitchenAid stacked ovens – unknown models
- Miele steam oven
- Dacor ETT3652BG five burner cooktop
- Miele dishwasher – unknown model
- Magic Chef wine cooler – unknown model

- KitchenAid trash compactor – unknown model
- In-Sink-Erator garbage disposal

Crew Quarters:

- Refrigerator: U-Line ULN 75 RB
- Microwave: GE Profile Spacemaker II

California Deck:

- Refrigerator: U-Line 2115R
- Ice Maker: U-Line ULN-WHI95TP-03

Control/Utility Room:

- Sub-Zero Model 501F freezer
- (2) Whirlpool full sized washer/dryer units

Cockpit:

- Kalamazoo LPG stainless steel grill with rotisserie
- Hobart garbage disposal

MTU Engines

03.05.19 MTU just completed a major top end full service on both engines. Records on board vessel ~ amazing engine room.

Main Propulsion is supplied by (2) DDC/MTU Series 2000 Model R1627K02 16 cylinder high-speed diesel engines with DDEC controls, each engine rated at 1800 BHP at 2300 RPM

The main engines drive through Detroit Diesel Model 6657DC 3.48:1 reduction gears (to 5" stainless steel propeller shafts fitted with Tides Marine Strong Seals, driving 52"X53.5" (5) blade bronze propellers. Main engine starter is hydraulic, utilizing hydraulic power generated by auxiliary engine pumps. Engine control stations are located in the skylounge and in the cockpit.

Tankage

Tankage is reported as follows:

- Fuel: 5,500 gallons in (3) aluminum tanks.
- Potable Water: 870 gallons in (3) stainless steel tanks.
- Gray Water: 400 gallons in (2) each w/automatic sumps.
- Black Water: 400 gallons in (1) FRP tank.
- Lube Oil: 120 gallons in (2) aluminum tanks.
- Waste Oil: 80 gallons in (1) aluminum tank.
- Steering Fluid: 60 gallons in (1) aluminum tank.

Steering System

Steering is effected by means of a Jastram active hydraulic system with hydraulic pressure provided by the integrated main hydraulic system. In addition to steering at the pilothouse helm console, remote steering stations are located to port and starboard on the pilothouse bridge wings, and in the port side cockpit station, each equipped with joystick controls, as well as bow and stern thruster controls.

Rudders are foil shaped cast urethane, on stainless steel rudderstocks. Rudder angle indicators at the and remote steering stations provide rudder position data to the Skipper.

Hydraulic System

The vessel is equipped with an integrated hydraulic system, with hydraulic power provided by pumps mounted on the port main engine reduction gear, both auxiliary engines.

11 gallon 3,000 psi accumulator, for the emergency start of the port main engine. Additionally, the system features a 240 VAC electric-hydraulic power pack, which can operate the davit. The integrated hydraulic system powers the following equipment:

- A Steelhead ST 5000 eight-function tender davit powered by the integrated hydraulic system, and by a 240 VAC electric-hydraulic power pack.
- Naiad 353 roll stabilizer system with 16 sq. ft. blades.
- Keypower single two-blade bronze propeller 18" 70 HP bow thruster, and 55 HP 16" stern thruster.
- Keypower KP6000 vertical anchor windlass.
- Bilge and fire pumps.
- Main propulsion engine starting.

Navigation/ Communication Electronics

- Displays: (5) Nauticomp 17" "Glass Bridge"
- Autopilot: Comnav Admiral P3
- Compass: Furuno SC-50
- Radar: (2) Furuno FR-2105-B
- Depthsounder: Furuno FCV-1200BB with FCV1200L repeater
- GPS: Furuno GP-32
- Radios: (2) Standard Horizon GX5500X; ICOM M-802 SSB
- Knotmeter: Brooks & Gatehouse Hydra 2000 multi-display
- Windpoint/Speed: Brooks & Gatehouse
- Navigation Software: Nobeltec Trident
- Satellite Communication: KVH Fleet 55; KVH VSat V3
- CCTV System: Includes vessel maneuvering features

Decks and Side Decks

Decks are all impeccably laid full teak with custom stainless bollards, rails, and hardware.

Full walk around sheltered SIDE DECKS with safe passage fore and aft. Oversized full beam swim platform for easy boarding on and off-vessel and deployment and the arrival of water toys.

Deck Equipment/ Ground Tackle & More

DECK:

- Steelhead Marine CT 5000 hydraulic davit on the port side of the boat deck.
- Keypower Model KP6000 hydraulic anchor windlass with band brake.

GROUND TACKLE:

The primary ground tackle consists of (1) approximately 400 lb. Forfjord-type anchor housed on a roller assembly in the stem and fitted with approximately 600' of 5/8" Grade 40 galvanized anchor chain, stacked in a deep chain locker at the time of current examination. The anchor windlass is a Keypower Model KP6000 vertical capstan model with band brake operated from foredeck remote cable controllers. When raised, the anchor chain can be secured to the vessel via a devil's claw. A Fortress FX-125 anchor with an unknown length of 6" high-test galvanized rode is stored beneath the California deck aft seating.

DECK WASH-DOWN/ANCHOR CHAIN WASH:

High pressure domestic fresh water, supplied by a 115 VAC pressure pump-set, is piped to two exterior bibs for deck wash-down and is piped to the anchor roller assembly for anchor chain wash.

BAIT/CRAB TANK SYSTEM:

(2) Sting Ray brand 115 VAC pumps supply raw water to port and starboard integral carb-bait tanks in the aft cockpit.

Deck/ Tender

TENDERS/RAFTS:

- 2014 RIBCRAFT 6.5m RIB (HIN: URK6510B414) equipped with a 2014 model Yamaha 150 HP
- Steelhead Davit
- DBL 12 man Solas A life raft in a canister and with cradle, equipped with the hydrostatic release.

Boat Deck entertainment area:

- Circular table and cushions to seat 6 adults
- Custom sunshade
- Granite counter top
- Storage
- Ice maker
- Fridge

Grey/ Black Water Systems

All toilets discharge to the composite holding tank, which is, in turn, discharged overboard via an Edson Model 120 diaphragm pump, or pumped through a Headhunter Tidalwave treatment system.

Gray water drains to sumps and to the gray water holding tanks. The holding tanks are evacuated automatically via either an AC sump pump or by a 24 VDC back-up pump.

Ventilation/ Heating/ Air Conditioning

Engine room ventilation is via a Delta-T programmable system, featuring two 240 VAC fan units.

Interior heating/air-conditioning is provided by an AquaAir A15-3-1VHGC 15 ton chill water system with 3-stage compressors with variable frequency drive for soft-start of the compressors, providing piped heated or cooled recirculated water to air handlers located in each major accommodation space. Each air handler features individual electronic controls.

An Espar “Hydronic” recirculating hot water and fan-forced air heating system is located in the amidships bilge compartment and ducted to major accommodation spaces.

Domestic Water

The domestic water system is supplied from the potable water tanks by means of (2) 240 VAC pumps and one 24 VDC back-up pump, operating through a filter array and an Atlantic model S23 120 VAC ultraviolet sterilizer and a Hallett ultraviolet sterilizer, supplying all interior piping and quick-connect fittings on the boat deck and in the cockpit, as well as anchor wash-down. Hot water is provided by (2) 30 gallon 240 VAC water heaters. Piping is Schedule 40 plastic throughout. The system also features a pump-pressurized media filter.

Electrical System AC/ DC

AC ELECTRICAL:

The AC electrical system consists of shore power inlets in the cockpit, including two 125/240VAC/100A inlet fittings to starboard aft, each fit with Glendinning CM8 shore power cable winders. The inlet fittings are wired first to a selector box and then through isolation circuit breakers and Charles IsoBoost 100 SST units to a 100-amp AC main electrical panel. From the main AC panel power is routed to various sub-panels located in the vessel interior.

AC electrical generation is provided by means of (2) 1800 Rpm diesel auxiliary generator sets. Both auxiliary generators are Northern Lights Model M10642T1 55 kW units. The port set serial number is 0642-48645, and the starboard set serial number is 0642-48646. Indicated operating hours on the port gen set are 1792, and on the starboard 1783. Both sets feature full sound enclosures, wet exhaust, and heat exchanged cooling. Both the port and starboard side auxiliary motors are fit with clutched hydraulic pumps. Both auxiliary generator sets are new installations.

The AC electrical system features a 40 kW 4-step raw water cooled manual load bank.

Electrical wiring is plastic and/or rubber coated stranded copper throughout. Breakers located in the main panel and sub-panels provide circuit protection.

DC ELECTRICAL:

DC electrical power is supplied by (10) 12-volt 225 Amp AGM batteries in banks as follows:

- (2) each 8D in (1) 24V bank for generator auxiliary engine start, located in the engine room.
- (4) each 8D in (1) 24V bank for ship's power.
- (2) each 8D in (1) 12V bank for ship's power and navigation electronics.

Battery charging is effected by means of the following:

- One McCarron VMI model 12402

- Two McCarron VMI model 200-2460-03

Alarm/ Camera Monitoring System

ALARM/MONITORING SYSTEMS:

Main engine function alarms are at the control stations. Bilge high water alarms are in the pilothouse and the crew quarters and are individually displayed on an LED panel in the pilothouse. Interior compartments and the bilge compartments forward of the engine room are fitted with smoke and heat sensors, which activate a general alarm. Smoke and heat sensors in the engine room reportedly activate a separate general alarm, as do smoke and heat sensors in the control/utility room and in the steering compartment.

The vessel has recently been equipped with a network-based closed-circuit television (CCTV) system. It provides vessel operators with enhancing situational awareness. The system consists of a camera server located under the pilothouse helm, whose drive bay allows for swapping OS SSD in the event of OS failure; four exterior mounted cameras (mast, and main deck to port, starboard, and aft.), which are commercial grade Bosch Autodome Jr. HD Pan-Tilt-Zoom; five cameras in the mechanical space.

The CCTV system distributed access and control includes accessing cameras from individual computer clients located in the pilot house and in the crew quarters. The cameras can also be accessed via mobile applications on cell phones or tablets. This server-based system allows for viewing and control from multiple locations, and crew watch is enhanced by enabling monitoring from anywhere on the boat.

Exclusions from Sale

Exclusions:

- Person property
- Fine Art and collections
- Various tools
- Library books

Disclaimer

The Company offers the details of this vessel in good faith but cannot guarantee or warrant the accuracy of this information nor warrant the condition of the vessel. A buyer should instruct his agents, or his surveyors, to investigate such details as the buyer desires validated. This vessel is offered subject to prior sale, price change, or withdrawal without notice.

Исключения

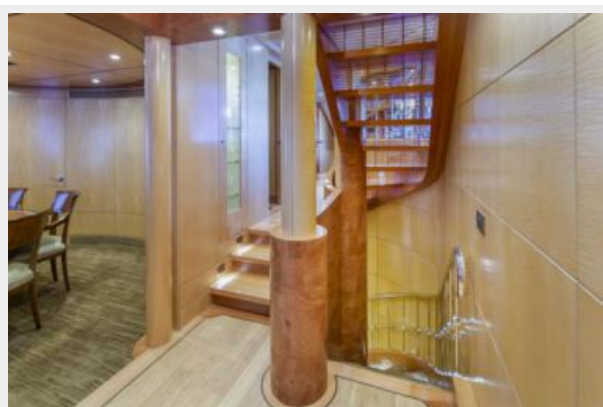
При продаже яхты исключаются личные вещи владельца.

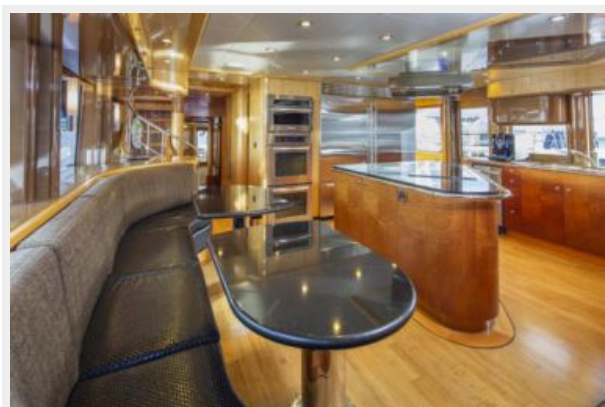
Отказ от ответственности

Компания предоставляет описание судна или яхты добросовестно, но не может гарантировать точность этой информации, а также не ручается за техническое состояние. Покупатель должен проинструктировать своих агентов или оценщиков исследовать представленную информацию более подробно, по собственному желанию. Продажа судна или яхты, изменение цены или снятие с продажи будет происходить без предварительного уведомления.

ФОТОГРАФИИ













КОНТАКТЫ

Андрей Шестаков (Andrey Shestakov) – ведущий яхтенный брокер отдела продаж яхт и судов компании Shestakov Yacht Sales Inc. Официальный представитель Shestakov Yacht Sales Inc. для русскоговорящих клиентов в центральном офисе компании в Майами/Форт Лодердейл/Флорида/США.

Контактная информация

Email: **andrey@shestakovyachtsales.com**

Web: **shestakovyachtsales.com**

Телефоны

Краснодарский край: **+7(918)465-66-44**

США, Майами, Флорида: **+1(954)274-4435**

Время работы

Понедельник – Суббота: **9:00 - 21:00**
EDT

Воскресенье: **Закрыто**

Адрес



Harbour Towne Marina, 850 NE 3rd St,
STE 213, Dania, FL 33004