

PAVED FOR — VIKING



Builder: VIKING

Year Built: 2002

Model: Sport Fisherman

Price: PRICE ON APPLICATION

Location: United States

LOA: 61' 9" (18.82m)

Beam: 18' 2" (5.54m)

Max Draft: 5' 6" (1.68m)

Cruise Speed: 29 Kts. (33 MPH)

Max Speed: 37 Kts. (43 MPH)

Our experienced yacht broker, Andrey Shestakov, will help you choose and buy a yacht that best suits your needs **Paved For — VIKING** from our catalogue. Presently, at Shestakov Yacht Sales Inc., we have a wide variety of yachts available on our sale's list. We also work in close contact with all the big yacht manufacturers from all over the world.

If you would like to buy a yacht **Paved For — VIKING** or would like help answering any questions concerning purchasing, selling or chartering a yacht, please call **+1(954)274-4435**

TABLE OF CONTENTS

TABLE OF CONTENTS	2
SPECIFICATIONS	7
Overview	7
Basic Information	7
Dimensions	7
Speed, Capacities and Weight	8
Accommodations	8
Hull and Deck Information	8
Engine Information	8
DETAILED INFORMATION	9
Recent Updates and New in 2018	9
Main Salon	9
Electronics and Navigation Equipment	9
Mechanical and Systems	9
Hull and Deck Upgrades 2015	9
Sound and Entertainment All New 2015	10
Exclusions	10
Disclaimer	10
Exclusions	10
Disclaimer	10
PHOTOS	11
2002 61 Viking EB Profile	11
2002 61 Viking EB Aft	11
61 Viking Aft Deck	11
61 Viking Aft Deck	11
61 Viking Aft Deck	12
61 Viking Aft Deck	12
61 Viking Bow	12

61 Viking Bow	12
61 Viking Bow	12
61 Viking Bow	12
61 Viking Bow	13
61 Viking Cockpit	13
61 Viking Cockpit	13
61 Viking Cockpit	13
61 Viking Cockpit	13
61 Viking Cockpit	13
61 Viking Cockpit	13
61 Viking Cockpit	14
61 Viking Cockpit	14
61 Viking Cockpit	14
61 Viking Cockpit	14
61 Viking Cockpit	14
61 Viking Cockpit	14
61 Viking Cockpit	14
61 Viking Cockpit	15
61 Viking Cockpit	15
61 Viking Dinette	15
61 Viking Dinette	15
61 Viking Galley	16
61 Viking Dinette	16
61 Viking Galley	16
61 Viking Galley	16
61 Viking Galley	17
61 Viking Galley	17
61 Viking EB Salon	17
61 Viking EB Salon	17
61 Viking EB Salon	17
61 Viking EB Salon	17

61 Viking EB Salon	18
61 Viking EB Salon	18
61 Viking EB Salon	18
61 Viking Enclosed Bridge	18
61 Viking Enclosed Bridge	19
61 Viking Enclosed Bridge	19
61 Viking Enclosed Bridge	19
61 Viking Enclosed Bridge	19
61 Viking Enclosed Bridge	20
61 Viking Enclosed Bridge Helm	20
61 Viking Enclosed Bridge Helm	20
61 Viking Enclosed Bridge Helm	20
61 Viking Enclosed Bridge Helm	20
61 Viking Enclosed Bridge Helm	20
61 Viking Enclosed Bridge Helm	21
61 Viking EB Master Stateroom	21
61 Viking EB Master Stateroom	21
61 Viking EB Master Stateroom	21
61 Viking EB Master Stateroom	21
61 Viking EB Master Stateroom	21
61 Viking EB Master Head	22
61 Viking EB Master Head	22
61 Viking EB Forward Stateroom	22
61 Viking EB Forward Stateroom	22
61 Viking EB Forward Stateroom	23
61 Viking EB Forward Stateroom	23
61 Viking EB Forward Stateroom	23
61 Viking EB Forward Head	23
61 Viking EB Forward Head	24

61 Viking EB Guest Stateroom	24
61 Viking EB Guest Stateroom	24
61 Viking EB Guest Stateroom	24
61 Viking EB Guest Head	25
61 Viking EB Guest Head	25
61 Viking EB Guest Head	25
61 Viking EB Laundry	25
61 Viking EB Engine Room	26
61 Viking EB Engine Room	26
61 Viking EB Engine Room	26
61 Viking EB Engine Room	26
61 Viking EB Engine Room	26
61 Viking EB Engine Room	26
61 Viking EB Engine Room	27
61 Viking EB Engine Room	27
61 Viking EB Engine Room	27
61 Viking EB Engine Room	27
61 Viking EB Engine Room	27
61 Viking EB Engine Room	27
Paved For_Engine Room12	27
Paved For_Engine Room13	28
Paved For_Engine Room14	28
Paved For_Engine Room15	28
61 Viking Prop Speed Dec 2018	28
2002 61 Viking EB	29
61 Viking Props Tuned 2018	29
61 Viking All New Zincs 2018	29
CONTACTS	30
Contact details	30
Telephones	30

Office hours	30
Address	30

SPECIFICATIONS

Overview

2002 61 Enclosed Bridge Viking Yachts. "Paved For" is located in Pompano, Florida, contact us today to schedule your private showing. Viking got it right in 2001 with the introduction of the 61 Convertible. Lean and muscular on the outside, her lavish interior, massive cockpit and superb open-water handling set the standards in her day for sportfishing luxury and performance. The interior includes three staterooms with a queen-size berth in the amidships owner's cabin. A large dinette is opposite the galley, and a huge U-shaped sofa dominates the salon. Like all Viking interiors, the high-gloss woodwork and rich decor make for truly elegant accommodations. The cockpit is fitted with a full array of fishing amenities, and the flybridge is arranged with a centerline helm with a huge console and plenty of guest seating. The engine room features standing headroom, and a separate pump room is forward. MTU 1500hp diesels cruise the Viking 61 at 32 knots (35–36 knots top). Over 100 were sold, making her one of the best fish raising convertibles ever!

Highlights Include: MTU 2000 Series Engines 1480 hp, 2600 hours, w/recent 3000 hour service, Nov 2018 (Injection Timing, Turbos, Intercoolers, Exhaust Risers - and much more recently serviced!) Dual ONAN 21.5kw generators Full Paint Job in 2015, Waxed every 5 Weeks Factory Mezzanine Seating installed at Viking 2015 Full-time Captain and Mate on Staff New Ceramic Window Tint in Bridge and Salon

Basic Information

Category: Sport Fisherman

Sub Category: Convertible

Model Year: 2002

Year Built: 2002

Country: United States

Registration #: 1130728

Coast Guard #: 1130728

Vessel Top: Enclosed

Cockpit: Yes

Dimensions

LOA: 61' 9" (18.82m)

Beam: 18' 2" (5.54m)

Max Draft: 5' 6" (1.68m)

MFG Length: 61' 0" (18.59m)

Speed, Capacities and Weight

Cruise Speed: 29 Kts. (33 MPH)

Max Speed: 37 Kts. (43 MPH)

Displacement: 90000 Pounds

Water Capacity: 81.89333612 Gallons

Holding Tank: 33.0215065 Gallons

Fuel Capacity: 515.1355014 Gallons

Accommodations

Total Cabins: 3

Total Heads: 3

Hull and Deck Information

Hull Material: Fiberglass

Engine Information

Engines: 2

Manufacturer: MTU

Model: 2000 Series

Engine Type: Inboard

Fuel Type: Diesel

DETAILED INFORMATION

Recent Updates and New in 2018

No Expenses Have Been Spared! Recent Updates Include: New Bottom Job (2-year paint) with Prop Speed Dec 2018, and Props Balanced & Tuned Aug 2018 Set of Spare Props New 20,000 BTU Bridge AC Nov 2018 AC & Refrigeration Service to all Systems Nov 2018 Steering Pump Nov 2018 New Exhaust Risers Nov 2018 Eskimo Ice Machine Rebuilt Oct 2018 New Shore Power Cables Aug 2018 Manifold Heat Exchangers Aug 2018 All New Hoses Aug 2018 New Mezzanine Box Freezer Unit Aug 2018 New Aft Cover & Sunshade Aug 2018 Custom Bridge Sun Cover and New Bridge Companion Seat Cushions Oct 2018 Two New Turbos July 2018 Twin Disc Transmission Service 2018 New Water Maker 30 gph April 2018 New Blue Water Rocket Launcher 2018 Release Fighting Chair Renished by Blue Water 2017 New LED Lighting around underside of Bridge New LED Lighting Cockpit over hang, sides, and aft bridge 2018 Blue LED Lighting Salon and Master New LED Lights in Heads 2018 Numerous Interior Updates 2018 New Exterior Cushions up & down July 2018 New Carpet with Extra Sound Insulation June 2018 New Dinette and Bar Stools June 2018 New Bridge Forward-facing Companion Seating, Port and Starboard of Helm June 2018 New Exhaust Fans June 2018 New Wall Paper Master Stateroom 2018 Plus MANY other Upgrades and Updates in 2018 New Sea Deck in Cockpit April 2017 New 12v electric outlets added for LPs, kite reels, & Deep Dropping 2017 New Ceramic Window Tint in Bridge and Salon

Main Salon

Large L-Shaped sofa w/storage Teak Cocktail Table Ungraded Window Blinds Upgraded Teak Border Valances Automatic Salon Door (Electric) Full Salon Carpet Runner

Electronics and Navigation Equipment

Furuno 96 mi Radar (Main) Furuno - NavNet 36mi Radar (Back-up) Furuno NavNet GPS / Plotter Garmin 8212 GPS / Plotter - Touch Screen (New 2015) North Star 1202 Displays ICOM VHF Radios (2) FLIR Night Vision Simrad Auto Pilot Intellian 6HD Sat Dome (New 2015) Glomex TV ant Furuno RD33 Depth Sounder (New 2015)

Mechanical and Systems

MTU 12V 2000 Series Engines - 1480 hp w/ recent service and updates Dual ONAN 21.5kw generators w/sound boxes Side Power Bow Thruster Eskimo Ice maker

Hull and Deck Upgrades 2015

Full Paint Job - Waterline up (Bluetone White Hull / Snow White topsides) Factory Mezzanine Seating Viking Installed Full Bowrail UMT Hydro Davit Lewmar V4 Windlass Canvas Designers Custom S/S Anchor pulpit w/ S/S Ultra Anchor Huper Optik ceramic window Im all Pilothouse windows

Sound and Entertainment All New 2015

Samsung 46" 4K HD TV - Salon Samsung 24" HD TV - Master Samsung 22" HD TV - VIP Guest cabin Samsung 20" HD TV - Pilothouse Intellian HD 6 SAT TV 24" dome Fusion Marine Stereo System JL Audio Speakers throughout

Exclusions

Excludes all owners personal gear and fishing equipment.

Disclaimer

The Company offers the details of this vessel in good faith but cannot guarantee or warrant the accuracy of this information nor warrant the condition of the vessel. A buyer should instruct his agents, or his surveyors, to investigate such details as the buyer desires validated. This vessel is offered subject to prior sale, price change, or withdrawal without notice. Mechanical Disclaimer Engine and generator hours are as of the date of the original listing and are a representation of what the listing broker is told by the owner and/or actual reading of the engine hour meters. The broker cannot guarantee the true hours. It is the responsibility of the purchaser and/or his agent to verify engine hours, warranties implied or otherwise and major overhauls as well as all other representations noted on the listing.X

Exclusions

Owner's personal belongings.

Disclaimer

The Company offers the details of this vessel or yacht in good faith but cannot guarantee or warrant the accuracy of this information nor warrant the condition of the vessel. A buyer should instruct his representatives, agents, or his surveyors, to investigate such details as the buyer desires validated. This vessel or yacht is offered subject to prior sale, price change, or withdrawal without notice.

PHOTOS

2002 61 Viking EB Profile



2002 61 Viking EB Aft



61 Viking Aft Deck



61 Viking Aft Deck



61 Viking Aft Deck



61 Viking Aft Deck



61 Viking Bow



61 Viking Bow



61 Viking Bow



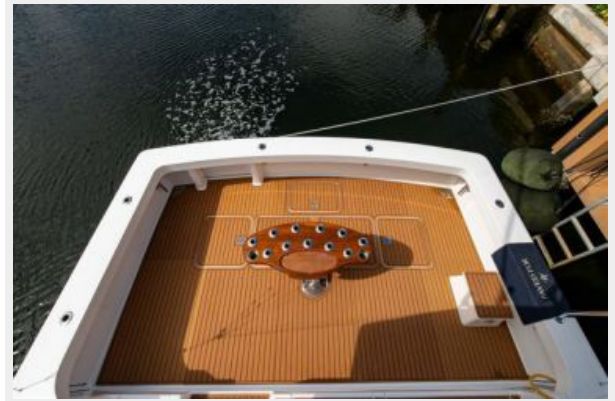
61 Viking Bow



61 Viking Bow



61 Viking Cockpit



61 Viking Cockpit



61 Viking Cockpit



61 Viking Cockpit



61 Viking Cockpit



61 Viking Cockpit



61 Viking Cockpit



61 Viking Cockpit



61 Viking Cockpit



61 Viking Cockpit



61 Viking Cockpit



61 Viking Cockpit



61 Viking Cockpit



61 Viking Dinette



61 Viking Dinette



61 Viking Dinette



61 Viking Galley



61 Viking Galley

61 Viking Galley



61 Viking Galley



61 Viking Galley



61 Viking EB Salon



61 Viking EB Salon



61 Viking EB Salon



61 Viking EB Salon



61 Viking EB Salon



61 Viking EB Salon



61 Viking EB Salon



61 Viking Enclosed Bridge



61 Viking Enclosed Bridge

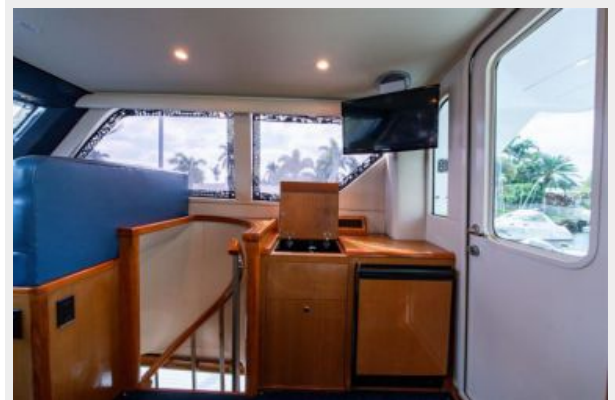
61 Viking Enclosed Bridge



61 Viking Enclosed Bridge



61 Viking Enclosed Bridge



61 Viking Enclosed Bridge



61 Viking Enclosed Bridge Helm



61 Viking Enclosed Bridge Helm



61 Viking Enclosed Bridge Helm



61 Viking Enclosed Bridge Helm



61 Viking Enclosed Bridge Helm



61 Viking Enclosed Bridge Helm



61 Viking EB Master Stateroom



61 Viking EB Master Stateroom



61 Viking EB Master Stateroom



61 Viking EB Master Stateroom



61 Viking EB Master Stateroom



61 Viking EB Master Head



61 Viking EB Master Head



61 Viking EB Forward Stateroom

61 Viking EB Forward Stateroom



61 Viking EB Forward Stateroom



61 Viking EB Forward Stateroom



61 Viking EB Forward Stateroom



61 Viking EB Forward Head



61 Viking EB Forward Head



61 Viking EB Guest Stateroom



61 Viking EB Guest Stateroom



61 Viking EB Guest Stateroom



61 Viking EB Guest Head



61 Viking EB Guest Head



61 Viking EB Guest Head



61 Viking EB Laundry



61 Viking EB Engine Room



61 Viking EB Engine Room



61 Viking EB Engine Room



61 Viking EB Engine Room



61 Viking EB Engine Room



61 Viking EB Engine Room



61 Viking EB Engine Room



61 Viking EB Engine Room



61 Viking EB Engine Room



61 Viking EB Engine Room



61 Viking EB Engine Room



Paved For_Engine Room12



Paved For_Engine Room13



Paved For_Engine Room14



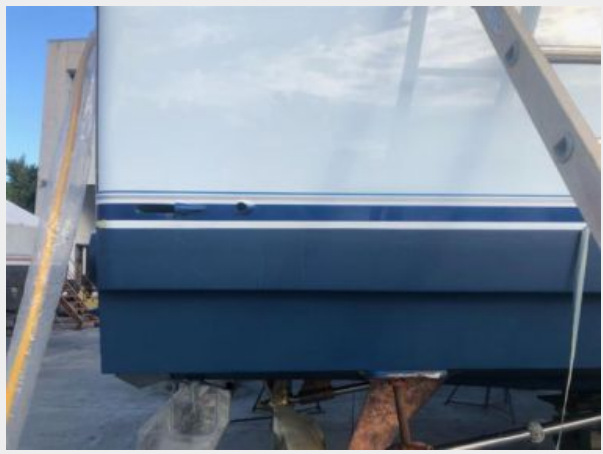
Paved For_Engine Room15



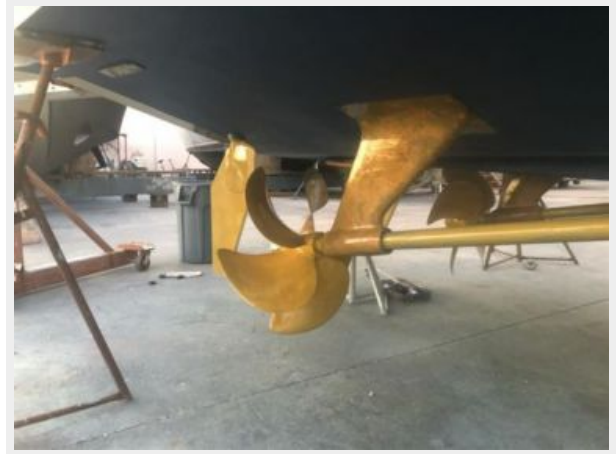
61 Viking Prop Speed Dec 2018



2002 61 Viking EB



61 Viking Props Tuned 2018



61 Viking All New Zincs 2018



CONTACTS

Andrey Shestakov, leading yacht broker of the sales department of Shestakov Yacht Sales Inc. Shestakov Yacht Sales Inc., the official representative of the Miami/Fort Lauderdale FL headquarters.

Contact details

Email: andrey@shestakovyachtsales.com

Web: shestakovyachtsales.com/en/

Telephones

USA: +1(954)274-4435

Office hours

Monday – Saturday: **9:00 - 21:00** EDT

Sunday: **closed**

Address



Harbour Towne Marina, 850 NE 3rd St,
STE 213, Dania, FL 33004