

PAVED FOR — VIKING



Судостроитель: VIKING

Год постройки: 2002

Модель: Катер для спортивной рыбалки

Цена: ЦЕНА ЯХТЫ ПО ЗАПРОСУ

Местонахождение: United States

Длина общая: 61' 9" (18.82m)

Ширина: 18' 2" (5.54m)

Макс. осадка: 5' 6" (1.68m)

Крейс. скорость: 29 Kts. (33 MPH)

Макс. скорость: 37 Kts. (43 MPH)

Купить **Paved For — VIKING** а также выбрать подходящую вам яхту из нашего каталога яхт вам поможет опытный яхтенный брокер Андрей Шестаков. На сегодняшний день компания **Shestakov Yacht Sales Inc.** имеет большое количество яхт в собственном списке продаж, а также тесно сотрудничает со всеми крупными яхтенными производителями по всему миру.

Для того чтобы купить яхту **Paved For — VIKING** а также проконсультироваться по любому вопросу связанному с покупкой, продажей, чартером яхт позвоните по телефону **+7(918)465-66-44**.

ОГЛАВЛЕНИЕ

ОГЛАВЛЕНИЕ	2
ХАРАКТЕРИСТИКИ	7
Обзор	7
Основная информация	7
Размеры	8
Скорость, вместимость и масса	8
Размещение	8
Корпус и палуба	8
Информация о двигателе	8
ПОДРОБНОЕ ОПИСАНИЕ	9
Recent Updates and New in 2018	9
Main Salon	9
Electronics and Navigation Equipment	9
Mechanical and Systems	9
Hull and Deck Upgrades 2015	9
Sound and Entertainment All New 2015	10
Exclusions	10
Disclaimer	10
Исключения	10
Отказ от ответственности	10
ФОТОГРАФИИ	11
2002 61 Viking EB Profile	11
2002 61 Viking EB Aft	11
61 Viking Aft Deck	11
61 Viking Aft Deck	11
61 Viking Aft Deck	12
61 Viking Aft Deck	12
61 Viking Bow	12

61 Viking Bow	12
61 Viking Bow	12
61 Viking Bow	12
61 Viking Bow	13
61 Viking Cockpit	13
61 Viking Cockpit	13
61 Viking Cockpit	13
61 Viking Cockpit	13
61 Viking Cockpit	13
61 Viking Cockpit	13
61 Viking Cockpit	14
61 Viking Cockpit	14
61 Viking Cockpit	14
61 Viking Cockpit	14
61 Viking Cockpit	14
61 Viking Cockpit	14
61 Viking Cockpit	14
61 Viking Cockpit	15
61 Viking Cockpit	15
61 Viking Dinette	15
61 Viking Dinette	15
61 Viking Galley	16
61 Viking Dinette	16
61 Viking Galley	16
61 Viking Galley	16
61 Viking Galley	17
61 Viking Galley	17
61 Viking EB Salon	17
61 Viking EB Salon	17
61 Viking EB Salon	17
61 Viking EB Salon	17

61 Viking EB Salon	18
61 Viking EB Salon	18
61 Viking EB Salon	18
61 Viking Enclosed Bridge	18
61 Viking Enclosed Bridge	19
61 Viking Enclosed Bridge	19
61 Viking Enclosed Bridge	19
61 Viking Enclosed Bridge	19
61 Viking Enclosed Bridge	20
61 Viking Enclosed Bridge Helm	20
61 Viking Enclosed Bridge Helm	20
61 Viking Enclosed Bridge Helm	20
61 Viking Enclosed Bridge Helm	20
61 Viking Enclosed Bridge Helm	20
61 Viking Enclosed Bridge Helm	21
61 Viking EB Master Stateroom	21
61 Viking EB Master Stateroom	21
61 Viking EB Master Stateroom	21
61 Viking EB Master Stateroom	21
61 Viking EB Master Stateroom	21
61 Viking EB Master Head	22
61 Viking EB Master Head	22
61 Viking EB Forward Stateroom	22
61 Viking EB Forward Stateroom	22
61 Viking EB Forward Stateroom	23
61 Viking EB Forward Stateroom	23
61 Viking EB Forward Stateroom	23
61 Viking EB Forward Head	23
61 Viking EB Forward Head	24

61 Viking EB Guest Stateroom	24
61 Viking EB Guest Stateroom	24
61 Viking EB Guest Stateroom	24
61 Viking EB Guest Head	25
61 Viking EB Guest Head	25
61 Viking EB Guest Head	25
61 Viking EB Laundry	25
61 Viking EB Engine Room	26
61 Viking EB Engine Room	26
61 Viking EB Engine Room	26
61 Viking EB Engine Room	26
61 Viking EB Engine Room	26
61 Viking EB Engine Room	26
61 Viking EB Engine Room	26
61 Viking EB Engine Room	27
61 Viking EB Engine Room	27
61 Viking EB Engine Room	27
61 Viking EB Engine Room	27
61 Viking EB Engine Room	27
61 Viking EB Engine Room	27
Paved For_Engine Room12	27
Paved For_Engine Room13	28
Paved For_Engine Room14	28
Paved For_Engine Room15	28
61 Viking Prop Speed Dec 2018	28
2002 61 Viking EB	29
61 Viking Props Tuned 2018	29
61 Viking All New Zincs 2018	29
КОНТАКТЫ	30
Контактная информация	30
Телефоны	30

Время работы	30
Адрес	30

ХАРАКТЕРИСТИКИ

Обзор

2002 61 Enclosed Bridge Viking Yachts. "Paved For" is located in Pompano, Florida, contact us today to schedule your private showing. Viking got it right in 2001 with the introduction of the 61 Convertible. Lean and muscular on the outside, her lavish interior, massive cockpit and superb open-water handling set the standards in her day for sportfishing luxury and performance. The interior includes three staterooms with a queen-size berth in the amidships owner's cabin. A large dinette is opposite the galley, and a huge U-shaped sofa dominates the salon. Like all Viking interiors, the high-gloss woodwork and rich decor make for truly elegant accommodations. The cockpit is fitted with a full array of fishing amenities, and the flybridge is arranged with a centerline helm with a huge console and plenty of guest seating. The engine room features standing headroom, and a separate pump room is forward. MTU 1500hp diesels cruise the Viking 61 at 32 knots (35–36 knots top). Over 100 were sold, making her one of the best fish raising convertibles ever!

Highlights Include: MTU 2000 Series Engines 1480 hp, 2600 hours, w/recent 3000 hour service, Nov 2018 (Injection Timing, Turbos, Intercoolers, Exhaust Risers - and much more recently serviced!) Dual ONAN 21.5kw generators Full Paint Job in 2015, Waxed every 5 Weeks Factory Mezzanine Seating installed at Viking 2015 Full-time Captain and Mate on Staff New Ceramic Window Tint in Bridge and Salon

Основная информация

Тип судна: Катер для спортивной рыбалки

Подкатегория: Convertible

Модельный год: 2002

Год постройки: 2002

Страна: United States

Регистрационный номер: 1130728

Номер регистрации в береговой охране: 1130728

Верх: Enclosed

Кубрик: Да

Размеры

Длина общая: 61' 9" (18.82m)

Ширина: 18' 2" (5.54m)

Макс. осадка: 5' 6" (1.68m)

Длина привального бруса: 61' 0"
(18.59m)

Скорость, вместимость и масса

Крейс. скорость: 29 Kts. (33 MPH)

Макс. скорость: 37 Kts. (43 MPH)

Водоизмещение: 90000 Pounds

Вместимость воды: 81.89333612 Gallons

Вместимость сточного бака: 33.0215065
Gallons

Объем топливного бака: 515.1355014
Gallons

Размещение

Всего кают: 3

Всего ком. состава: 3

Корпус и палуба

Материал корпуса: Fiberglass

Информация о двигателе

Двигатели: 2

Производитель: MTU

Модель: 2000 Series

Тип двигателя: Inboard

Тип топлива: Diesel

ПОДРОБНОЕ ОПИСАНИЕ

Recent Updates and New in 2018

No Expenses Have Been Spared! Recent Updates Include: New Bottom Job (2-year paint) with Prop Speed Dec 2018, and Props Balanced & Tuned Aug 2018 Set of Spare Props New 20,000 BTU Bridge AC Nov 2018 AC & Refrigeration Service to all Systems Nov 2018 Steering Pump Nov 2018 New Exhaust Risers Nov 2018 Eskimo Ice Machine Rebuilt Oct 2018 New Shore Power Cables Aug 2018 Manifold Heat Exchangers Aug 2018 All New Hoses Aug 2018 New Mezzanine Box Freezer Unit Aug 2018 New Aft Cover & Sunshade Aug 2018 Custom Bridge Sun Cover and New Bridge Companion Seat Cushions Oct 2018 Two New Turbos July 2018 Twin Disc Transmission Service 2018 New Water Maker 30 gph April 2018 New Blue Water Rocket Launcher 2018 Release Fighting Chair Renished by Blue Water 2017 New LED Lighting around underside of Bridge New LED Lighting Cockpit over hang, sides, and aft bridge 2018 Blue LED Lighting Salon and Master New LED Lights in Heads 2018 Numerous Interior Updates 2018 New Exterior Cushions up & down July 2018 New Carpet with Extra Sound Insulation June 2018 New Dinette and Bar Stools June 2018 New Bridge Forward-facing Companion Seating, Port and Starboard of Helm June 2018 New Exhaust Fans June 2018 New Wall Paper Master Stateroom 2018 Plus MANY other Upgrades and Updates in 2018 New Sea Deck in Cockpit April 2017 New 12v electric outlets added for LPs, kite reels, & Deep Dropping 2017 New Ceramic Window Tint in Bridge and Salon

Main Salon

Large L-Shaped sofa w/storage Teak Cocktail Table Ungraded Window Blinds Upgraded Teak Border Valances Automatic Salon Door (Electric) Full Salon Carpet Runner

Electronics and Navigation Equipment

Furuno 96 mi Radar (Main) Furuno - NavNet 36mi Radar (Back-up) Furuno NavNet GPS / Plotter Garmin 8212 GPS / Plotter - Touch Screen (New 2015) North Star 1202 Displays ICOM VHF Radios (2) FLIR Night Vision Simrad Auto Pilot Intellian 6HD Sat Dome (New 2015) Glomex TV ant Furuno RD33 Depth Sounder (New 2015)

Mechanical and Systems

MTU 12V 2000 Series Engines - 1480 hp w/ recent service and updates Dual ONAN 21.5kw generators w/sound boxes Side Power Bow Thruster Eskimo Ice maker

Hull and Deck Upgrades 2015

Full Paint Job - Waterline up (Bluetone White Hull / Snow White topsides)Factory Mezzanine Seating Viking InstalledFull BowrailUMT Hydro DavitLewmar V4 WindlassCanvas Designers Custom S/S Anchor pulpit w/ S/S Ultra AnchorHuper Optik ceramic window Im all Pilothouse windows

Sound and Entertainment All New 2015

Samsung 46" 4K HD TV - SalonSamsung 24" HD TV - MasterSamsung 22" HD TV- VIP Guest cabinSamsung 20" HD TV - PilothouseIntellian HD 6 SAT TV 24" domeFusion Marine Stereo SystemJL Audio Speakers throughout

Exclusions

Excludes all owners personal gear and fishing equipment.

Disclaimer

The Company offers the details of this vessel in good faith but cannot guarantee or warrant the accuracy of this information nor warrant the condition of the vessel. A buyer should instruct his agents, or his surveyors, to investigate such details as the buyer desires validated. This vessel is offered subject to prior sale, price change, or withdrawal without notice.Mechanical DisclaimerEngine and generator hours are as of the date of the original listing and are a representation of what the listing broker is told by the owner and/or actual reading of the engine hour meters. The broker cannot guarantee the true hours. It is the responsibility of the purchaser and/or his agent to verify engine hours, warranties implied or otherwise and major overhauls as well as all other representations noted on the listing.X

Исключения

При продаже яхты исключаются личные вещи владельца.

Отказ от ответственности

Компания предоставляет описание судна или яхты добросовестно, но не может гарантировать точность этой информации, а также не ручается за техническое состояние. Покупатель должен проинструктировать своих агентов или оценщиков исследовать представленную информацию более подробно, по собственному желанию. Продажа судна или яхты, изменение цены или снятие с продажи будет происходить без предварительного уведомления.

ФОТОГРАФИИ

2002 61 Viking EB Profile



2002 61 Viking EB Aft



61 Viking Aft Deck



61 Viking Aft Deck



61 Viking Aft Deck



61 Viking Aft Deck



61 Viking Bow



61 Viking Bow



61 Viking Bow



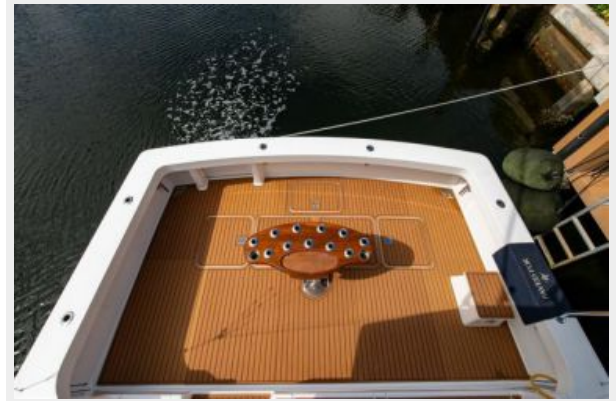
61 Viking Bow



61 Viking Bow



61 Viking Cockpit



61 Viking Cockpit



61 Viking Cockpit



61 Viking Cockpit



61 Viking Cockpit



61 Viking Cockpit



61 Viking Cockpit



61 Viking Cockpit



61 Viking Cockpit



61 Viking Cockpit



61 Viking Cockpit



61 Viking Cockpit



61 Viking Cockpit



61 Viking Dinette



61 Viking Dinette



61 Viking Dinette



61 Viking Galley



61 Viking Galley

61 Viking Galley



61 Viking Galley



61 Viking Galley



61 Viking EB Salon



61 Viking EB Salon



61 Viking EB Salon



61 Viking EB Salon



61 Viking EB Salon



61 Viking EB Salon



61 Viking EB Salon



61 Viking Enclosed Bridge



61 Viking Enclosed Bridge

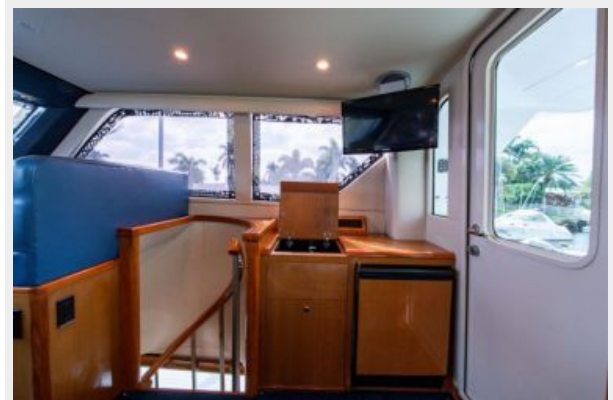
61 Viking Enclosed Bridge



61 Viking Enclosed Bridge



61 Viking Enclosed Bridge



61 Viking Enclosed Bridge



61 Viking Enclosed Bridge Helm



61 Viking Enclosed Bridge Helm



61 Viking Enclosed Bridge Helm



61 Viking Enclosed Bridge Helm



61 Viking Enclosed Bridge Helm



61 Viking Enclosed Bridge Helm



61 Viking EB Master Stateroom



61 Viking EB Master Stateroom



61 Viking EB Master Stateroom



61 Viking EB Master Stateroom



61 Viking EB Master Stateroom



61 Viking EB Master Head



61 Viking EB Master Head



61 Viking EB Forward Stateroom

61 Viking EB Forward Stateroom



61 Viking EB Forward Stateroom



61 Viking EB Forward Stateroom



61 Viking EB Forward Stateroom



61 Viking EB Forward Head



61 Viking EB Forward Head



61 Viking EB Guest Stateroom



61 Viking EB Guest Stateroom



61 Viking EB Guest Stateroom



61 Viking EB Guest Head



61 Viking EB Guest Head



61 Viking EB Guest Head



61 Viking EB Laundry



61 Viking EB Engine Room



61 Viking EB Engine Room



61 Viking EB Engine Room



61 Viking EB Engine Room



61 Viking EB Engine Room



61 Viking EB Engine Room



61 Viking EB Engine Room



61 Viking EB Engine Room



61 Viking EB Engine Room



61 Viking EB Engine Room



61 Viking EB Engine Room



Paved For_Engine Room12



Paved For_Engine Room13



Paved For_Engine Room14



Paved For_Engine Room15



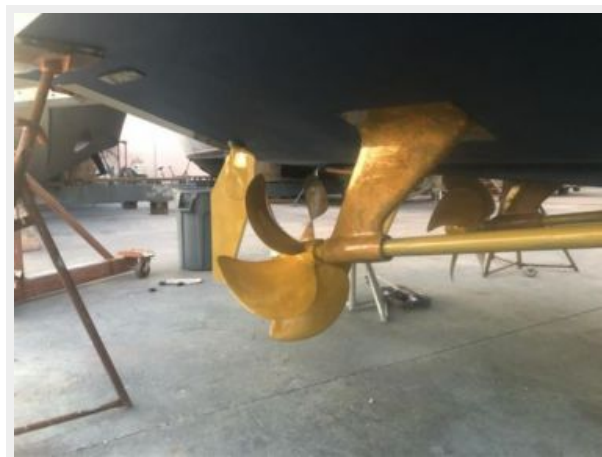
61 Viking Prop Speed Dec 2018



2002 61 Viking EB



61 Viking Props Tuned 2018



61 Viking All New Zincs 2018



КОНТАКТЫ

Андрей Шестаков (Andrey Shestakov) – ведущий яхтенный брокер отдела продаж яхт и судов компании Shestakov Yacht Sales Inc. Официальный представитель Shestakov Yacht Sales Inc. для русскоговорящих клиентов в центральном офисе компании в Майами/Форт Лодердейл/Флорида/США.

Контактная информация

Email: andrey@shestakovyachtsales.com

Web: shestakovyachtsales.com

Телефоны

Краснодарский край: **+7(918)465-66-44**

США, Майами, Флорида: **+1(954)274-4435**

Время работы

Понедельник – Суббота: **9:00 - 21:00**
EDT

Воскресенье: **Закрето**

Адрес



Harbour Towne Marina, 850 NE 3rd St,
STE 213, Dania, FL 33004