

## FLYING H — SEAWARD



**Builder:** SEAWARD

**Year Built:** 2009

**Model:** Cruising Sailboat

**Price:** PRICE ON APPLICATION

**Location:** Mexico

**LOA:** 35' 0" (10.67m)

**Beam:** 106' 0" (32.31m)

**Min Draft:** 1' 8" (0.51m)

**Max Draft:** 6' 6" (1.98m)

Our experienced yacht broker, Andrey Shestakov, will help you choose and buy a yacht that best suits your needs **FLYING H — SEAWARD** from our catalogue. Presently, at Shestakov Yacht Sales Inc., we have a wide variety of yachts available on our sale's list. We also work in close contact with all the big yacht manufacturers from all over the world.

If you would like to buy a yacht **FLYING H — SEAWARD** or would like help answering any questions concerning purchasing, selling or chartering a yacht, please call **+1(954)274-4435**

# TABLE OF CONTENTS

TABLE OF CONTENTS	2
SPECIFICATIONS	4
Overview	4
Basic Information	5
Dimensions	6
Speed, Capacities and Weight	6
Accommodations	6
Hull and Deck Information	6
Engine Information	6
DETAILED INFORMATION	7
BROKERS COMMNTS	7
Exclusions	8
Disclaimer	8
PHOTOS	9
S/V FLYING H 32'_02	9
S/V FLYING H 32'_03	9
S/V FLYING H 32'_04	9
S/V FLYING H 32'_05	9
S/V FLYING H 32'_07	10
S/V FLYING H 32'_06	10
S/V FLYING H 32'_08	10
S/V FLYING H 32'_09	10
S/V FLYING H 32'_10	10
S/V FLYING H 32'_11	10
S/V FLYING H 32'_16	11
S/V FLYING H 32'_15	11
S/V FLYING H 32'_17	11
S/V FLYING H 32'_18	11

---

S/V FLYING H 32'_19	12
S/V FLYING H 32'_20	12
S/V FLYING H 32'_21	12
S/V FLYING H 32'_22	12
S/V FLYING H 32'_23	12
S/V FLYING H 32'_24	12
S/V FLYING H 32'_25	13
S/V FLYING H 32'_26	13
S/V FLYING H 32'_27	13
S/V FLYING H 32'_28	13
S/V FLYING H 32'_29	13
S/V FLYING H 32'_30	13
S/V FLYING H 32'_31	14
S/V FLYING H 32'_32	14
S/V FLYING H 32'_33	14
S/V FLYING H 32'_34	14
S/V FLYING H 32'_35	15
CONTACTS	16
Contact details	16
Telephones	16
Office hours	16
Address	16

---

# SPECIFICATIONS

## Overview

### BROKER COMMENTS

Built by Hake Yachts yard in Stuart Florida, the Seaward yacht lines are known for their unique sailing abilities; Under sail this 32 RK model is stiff in most sea conditions, with the lifting keel fully extended to a depth of 6'7"; her 2500 lb lead bulb at the bottom of the monohull combined with her high aspect ratio foil rig, her performance is truly remarkable. Designed to be trailered, she is a well known shallow water cruiser with her retractable keel raising up for a min draft of under 2 feet.

Hake Yachts' reputation for building quality sailboats is unmatched in the industry and their tradition of quality and innovation has been diligently maintained for over 35 years.

These unique vessels have a loyal fan base and are well respected for their exceptional performance, shallow water capabilities and fine build qualities. **SPECIFICATIONS - EQUIPMENT**

**Dimensions** LOA: 32 ft 0 in Beam: 10 ft 6 in LWL: 30 ft 7 in Minimum Draft: 1 ft 8 in Maximum Draft: 6 ft 6 in Ballast: 2500 lbs Headroom: 6 ft 5 in Dry Weight: 8300 lbs **Engines** Engine Brand: Yanmar Year Built: 2010 Engine Model: 3YM30 Engine Type: Inboard Engine/Fuel Type: Diesel Propeller: 3 blade propeller Drive Type: Direct Drive Engine Power: 30 HP **Tanks** Fresh Water Tanks: (65 Gallons) Fuel Tanks: (20 Gallons) Holding Tanks: (30 Gallons) **Accommodations** Number of single berths: 1 Number of double berths: 3 Number of cabins: 1 Number of heads: 1 **Electronics** VHF Compass Plotter - Raymarine Depthsounder - Raymarine Wind speed and direction - Raymarine Navigation center GPS - Raymarine Stereo - Bluetooth Cockpit speakers Log-speedometer - Raymarine Autopilot - Raymarine **Sails** New 135 Genoa Furling Head Sail January 2019 Furling genoa Fully battened mainsail Working Sail Area : 460.00 sq ft **Inside Equipment** Battery charger Air conditioning (serviced in January 2019) Electric bilge pump Marine head Refrigerator Hot water **Electrical Equipment** Shore power inlet Electrical Circuit: 110V **Outside Equipment/Extras** Cockpit cushions Cockpit shower Outboard engine brackets Swimming ladder Electric windlass **Covers** Bimini Top Mainsail cover **Standard Equipment**

- Yanmar diesel, 3YM30, 30hp, heat exchanger cooled
- Layup is handlaid unidirectional fiberglass, critical laminates of hull, keel, rudder and trunk are of carbon fiber
- Wheel steering, with 36" stainless wheel
- Fully battened, full-roached mainsail with reef points
- Roller furled 135 genoa with suncover
- Genoa tracks and blocks, double lead cars
- Internal halyards and outhauls
- Self tailing winches, two #40 two-speed sheet winches, two #16 halyard winches
- Electric refrigeration, 12 volt

- Stainless opening ports with screens (8)
- Vertically retracting high aspect keel, electrically operated
- Vertically retracting high aspect rudder
- Interior cushions
- Deluxe hatches (2)
- Stainless cowl vents w/dorades (2)
- Dinette table
- Sinks: double bowl in galley, single in head
- 65 Gallon fresh water supply
- Circuit breaker panel, ac/dc
- Fully molded structural headliner
- Teak and holly sole in salon
- 2 Teak privacy doors
- Private head with separate shower
- Batteries: 2
- Four stainless four bolt yacht cleats
- Bowsprit with rollers for two anchors
- Bow pulpit with double lifelines
- Stern rail with stern rail seats
- Swim ladder and swim shower at transom
- Running lights
- Heavy stainless strike rail
- Anodized slotted toe rail
- Dual stainless hawse pipes for mooring lines
- Anchor storage with stainless deck pipe
- Molded gelcoat sheer stripe. 2-part polyurethane boot stripe
- Iso-NPG gelcoat
- Mast light, steaming, anchor combination

## Basic Information

**Category:** Cruising Sailboat

**Sub Category:** Sloop

**Model Year:** 2009

**Year Built:** 2009

**Country:** Mexico

**Vessel Top:** Dodger

**Cockpit:** Yes

---

## Dimensions

---

**LOA:** 35' 0" (10.67m)

**LWL:** 30' 7" (9.32m)

**Beam:** 106' 0" (32.31m)

**Min Draft:** 1' 8" (0.51m)

**Max Draft:** 6' 6" (1.98m)

---

## Speed, Capacities and Weight

---

**Displacement:** 8300 Pounds

**Water Capacity:** 65 Gallons

**Holding Tank:** 30 Gallons

**Fuel Capacity:** 20 Gallons

---

## Accommodations

---

**Total Cabins:** 1

**Total Berths:** 4

**Sleeps:** 7

**Total Heads:** 1

---

## Hull and Deck Information

---

**Hull Material:** Fiberglass

**Hull Configuration:** Fin & Bulb

**Hull Color:** White

---

## Engine Information

---

**Engines:** 1

**Manufacturer:** Yanmar

**Model:** 3YM30

**Engine Type:** Inboard

**Fuel Type:** Diesel

# DETAILED INFORMATION

## BROKERS COMMENTS

Built by Hake Yachts yard in Stuart Florida, the Seaward yacht lines are known for their unique sailing abilities; Under sail this 32 RK model is stiff in most sea conditions, with the lifting keel fully extended to a depth of 6'7" and her 2500 lb lead bulb at the bottom of the monohull and high aspect ratio foil rig, She is a well known shallow water cruiser with her retractable keel raising up for a min draft of under 2 feet.

Hake Yachts' reputation for building quality sailboats is unmatched in the industry and their tradition of quality and innovation has been diligently maintained for over 35 years.

These unique vessels have a loyal fan base and are well respected for their exceptional performance, shallow water capabilities and fine build qualities. **SPECIFICATIONS - EQUIPMENT**

**Dimensions** LOA: 32 ft 0 in Beam: 10 ft 6 in LWL: 30 ft 7 in Minimum Draft: 1 ft 8 in Maximum Draft: 6 ft 6 in Ballast: 2500 lbs Headroom: 6 ft 5 in Dry Weight: 8300 lbs **Engines** Engine Brand: Yanmar Year Built: 2010 Engine Model: 3YM30 Engine Type: Inboard Engine/Fuel Type: Diesel Propeller: 3 blade propeller Drive Type: Direct Drive Engine Power: 30 HP **Tanks** Fresh Water Tanks: (65 Gallons) Fuel Tanks: (20 Gallons) Holding Tanks: (30 Gallons) **Accommodations** Number of single berths: 1 Number of double berths: 3 Number of cabins: 1 Number of heads: 1 **Electronics** VHF Compass Plotter - Raymarine Depthsounder - Raymarine Wind speed and direction - Raymarine Navigation center GPS - Raymarine Stereo - Bluetooth Cockpit speakers Log-speedometer - Raymarine Autopilot - Raymarine **Sails** Furling genoa Fully battened mainsail Working Sail Area : 460.00 sq ft **Inside Equipment** Battery charger Air conditioning Electric bilge pump Marine head Refrigerator Hot water **Electrical Equipment** Shore power inlet Electrical Circuit: 110V **Outside Equipment/Extras** Cockpit cushions Cockpit shower Outboard engine brackets Swimming ladder Electric windlass **Covers** Bimini Top Mainsail cover **Standard Equipment**

- Yanmar diesel, 3YM30, 30hp, heat exchanger cooled
- Layup is handlaid unidirectional fiberglass, critical laminates of hull, keel, rudder and trunk are of carbon fiber
- Wheel steering, with 36" stainless wheel
- Fully battened, full-roached mainsail with reef points
- Roller furled 135 genoa with suncover
- Genoa tracks and blocks, double lead cars
- Internal halyards and outhauls
- Self tailing winches, two #40 two-speed sheet winches, two #16 halyard winches
- Electric refrigeration, 12 volt
- Stainless opening ports with screens (8)
- Vertically retracting high aspect keel, electrically operated

- Vertically retracting high aspect rudder
- Interior cushions
- Deluxe hatches (2)
- Stainless cowl vents w/dorades (2)
- Dinette table
- Sinks: double bowl in galley, single in head
- 65 Gallon fresh water supply
- Circuit breaker panel, ac/dc
- Fully molded structural headliner
- Teak and holly sole in salon
- 2 Teak privacy doors
- Private head with separate shower
- Batteries: 2
- Four stainless four bolt yacht cleats
- Bowsprit with rollers for two anchors
- Bow pulpit with double lifelines
- Stern rail with stern rail seats
- Swim ladder and swim shower at transom
- Running lights
- Heavy stainless strike rail
- Anodized slotted toe rail
- Dual stainless hawse pipes for mooring lines
- Anchor storage with stainless deck pipe
- Molded gelcoat sheer stripe. 2-part polyurethane boot stripe
- Iso-NPG gelcoat
- Mast light, steaming, anchor combination
- 

## Exclusions

---

Owner's personal belongings.

## Disclaimer

---

The Company offers the details of this vessel or yacht in good faith but cannot guarantee or warrant the accuracy of this information nor warrant the condition of the vessel. A buyer should instruct his representatives, agents, or his surveyors, to investigate such details as the buyer desires validated. This vessel or yacht is offered subject to prior sale, price change, or withdrawal without notice.



# PHOTOS

S/V FLYING H 32'\_02



S/V FLYING H 32'\_03



S/V FLYING H 32'\_04



S/V FLYING H 32'\_05



**S/V FLYING H 32'\_06**



**S/V FLYING H 32'\_07**



**S/V FLYING H 32'\_08**



**S/V FLYING H 32'\_09**



**S/V FLYING H 32'\_10**



**S/V FLYING H 32'\_11**



S/V FLYING H 32'\_15



S/V FLYING H 32'\_16



S/V FLYING H 32'\_17



S/V FLYING H 32'\_18

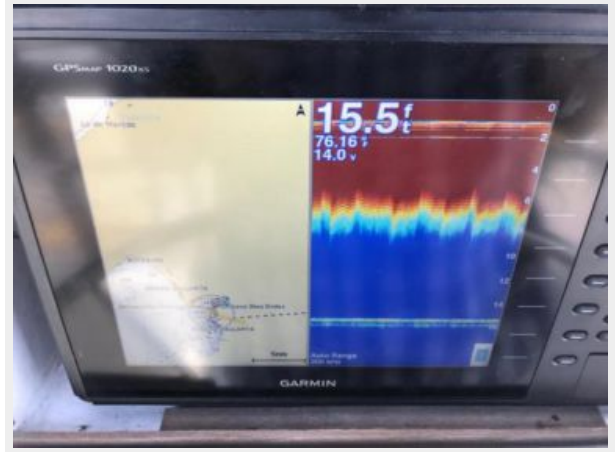




S/V FLYING H 32'\_19



S/V FLYING H 32'\_20



S/V FLYING H 32'\_21



S/V FLYING H 32'\_22



S/V FLYING H 32'\_23



S/V FLYING H 32'\_24



S/V FLYING H 32'\_25



S/V FLYING H 32'\_26



S/V FLYING H 32'\_27



S/V FLYING H 32'\_28



S/V FLYING H 32'\_29



S/V FLYING H 32'\_30





S/V FLYING H 32'\_31



S/V FLYING H 32'\_32



S/V FLYING H 32'\_33



S/V FLYING H 32'\_34



**S/V FLYING H 32'\_35**



---

# CONTACTS

---

Andrey Shestakov, leading yacht broker of the sales department of Shestakov Yacht Sales Inc. Shestakov Yacht Sales Inc., the official representative of the Miami/Fort Lauderdale FL headquarters.

---

## Contact details

---

Email: [andrey@shestakovyachtsales.com](mailto:andrey@shestakovyachtsales.com)

Web: [shestakovyachtsales.com/en/](http://shestakovyachtsales.com/en/)

---

## Telephones

---

USA: +1(954)274-4435

---

## Office hours

---

Monday – Saturday: **9:00 - 21:00** EDT

Sunday: **closed**

---

## Address

---



Harbour Towne Marina, 850 NE 3rd St,  
STE 213, Dania, FL 33004