

FLYING H — SEAWARD



Судостроитель: SEAWARD

Год постройки: 2009

Модель: Крейсерская яхта

Цена: **ЦЕНА ЯХТЫ ПО ЗАПРОСУ**

Местонахождение: Mexico

Длина общая: 35' 0" (10.67m)

Ширина: 106' 0" (32.31m)

Мин. осадка: 1' 8" (0.51m)

Макс. осадка: 6' 6" (1.98m)

Купить **FLYING H — SEAWARD** а также выбрать подходящую вам яхту из нашего каталога яхт вам поможет опытный яхтенный брокер Андрей Шестаков. На сегодняшний день компания **Shestakov Yacht Sales Inc.** имеет большое количество яхт в собственном списке продаж, а также тесно сотрудничает со всеми крупными яхтенными производителями по всему миру.

Для того чтобы купить яхту **FLYING H — SEAWARD** а также проконсультироваться по любому вопросу связанному с покупкой, продажей, чартером яхт позвоните по телефону **+7(918)465-66-44**.

ОГЛАВЛЕНИЕ

ОГЛАВЛЕНИЕ	2
ХАРАКТЕРИСТИКИ	4
Обзор	4
Основная информация	5
Размеры	6
Скорость, вместимость и масса	6
Размещение	6
Корпус и палуба	6
Информация о двигателе	6
ПОДРОБНОЕ ОПИСАНИЕ	7
BROKERS COMMNTS	7
Исключения	8
Отказ от ответственности	8
ФОТОГРАФИИ	9
S/V FLYING H 32'_02	9
S/V FLYING H 32'_03	9
S/V FLYING H 32'_04	9
S/V FLYING H 32'_05	9
S/V FLYING H 32'_07	10
S/V FLYING H 32'_06	10
S/V FLYING H 32'_08	10
S/V FLYING H 32'_09	10
S/V FLYING H 32'_10	10
S/V FLYING H 32'_11	10
S/V FLYING H 32'_16	11
S/V FLYING H 32'_15	11
S/V FLYING H 32'_17	11
S/V FLYING H 32'_18	11

S/V FLYING H 32'_19	12
S/V FLYING H 32'_20	12
S/V FLYING H 32'_21	12
S/V FLYING H 32'_22	12
S/V FLYING H 32'_23	12
S/V FLYING H 32'_24	12
S/V FLYING H 32'_25	13
S/V FLYING H 32'_26	13
S/V FLYING H 32'_27	13
S/V FLYING H 32'_28	13
S/V FLYING H 32'_29	13
S/V FLYING H 32'_30	13
S/V FLYING H 32'_31	14
S/V FLYING H 32'_32	14
S/V FLYING H 32'_33	14
S/V FLYING H 32'_34	14
S/V FLYING H 32'_35	15
КОНТАКТЫ	16
Контактная информация	16
Телефоны	16
Время работы	16
Адрес	16

ХАРАКТЕРИСТИКИ

Обзор

BROKER COMMENTS

Built by Hake Yachts yard in Stuart Florida, the Seaward yacht lines are known for their unique sailing abilities; Under sail this 32 RK model is stiff in most sea conditions, with the lifting keel fully extended to a depth of 6'7"; her 2500 lb lead bulb at the bottom of the monohull combined with her high aspect ratio foil rig, her performance is truly remarkable. Designed to be trailered, she is a well known shallow water cruiser with her retractable keel raising up for a min draft of under 2 feet.

Hake Yachts' reputation for building quality sailboats is unmatched in the industry and their tradition of quality and innovation has been diligently maintained for over 35 years.

These unique vessels have a loyal fan base and are well respected for their exceptional performance, shallow water capabilities and fine build qualities. **SPECIFICATIONS - EQUIPMENT**

Dimensions LOA: 32 ft 0 in Beam: 10 ft 6 in LWL: 30 ft 7 in Minimum Draft: 1 ft 8 in Maximum Draft: 6 ft 6 in Ballast: 2500 lbs Headroom: 6 ft 5 in Dry Weight: 8300 lbs **Engines** Engine Brand: Yanmar Year Built: 2010 Engine Model: 3YM30 Engine Type: Inboard Engine/Fuel Type: Diesel Propeller: 3 blade propeller Drive Type: Direct Drive Engine Power: 30 HP **Tanks** Fresh Water Tanks: (65 Gallons) Fuel Tanks: (20 Gallons) Holding Tanks: (30 Gallons) **Accommodations** Number of single berths: 1 Number of double berths: 3 Number of cabins: 1 Number of heads: 1 **Electronics** VHF Compass Plotter - Raymarine Depthsounder - Raymarine Wind speed and direction - Raymarine Navigation center GPS - Raymarine Stereo - Bluetooth Cockpit speakers Log-speedometer - Raymarine Autopilot - Raymarine **Sails** New 135 Genoa Furling Head Sail January 2019 Furling genoa Fully battened mainsail Working Sail Area : 460.00 sq ft **Inside Equipment** Battery charger Air conditioning (serviced in January 2019) Electric bilge pump Marine head Refrigerator Hot water **Electrical Equipment** Shore power inlet Electrical Circuit: 110V **Outside Equipment/Extras** Cockpit cushions Cockpit shower Outboard engine brackets Swimming ladder Electric windlass **Covers** Bimini Top Mainsail cover **Standard Equipment**

- Yanmar diesel, 3YM30, 30hp, heat exchanger cooled
- Layup is handlaid unidirectional fiberglass, critical laminates of hull, keel, rudder and trunk are of carbon fiber
- Wheel steering, with 36" stainless wheel
- Fully battened, full-roached mainsail with reef points
- Roller furled 135 genoa with suncover
- Genoa tracks and blocks, double lead cars
- Internal halyards and outhauls
- Self tailing winches, two #40 two-speed sheet winches, two #16 halyard winches
- Electric refrigeration, 12 volt

- Stainless opening ports with screens (8)
- Vertically retracting high aspect keel, electrically operated
- Vertically retracting high aspect rudder
- Interior cushions
- Deluxe hatches (2)
- Stainless cowl vents w/dorades (2)
- Dinette table
- Sinks: double bowl in galley, single in head
- 65 Gallon fresh water supply
- Circuit breaker panel, ac/dc
- Fully molded structural headliner
- Teak and holly sole in salon
- 2 Teak privacy doors
- Private head with separate shower
- Batteries: 2
- Four stainless four bolt yacht cleats
- Bowsprit with rollers for two anchors
- Bow pulpit with double lifelines
- Stern rail with stern rail seats
- Swim ladder and swim shower at transom
- Running lights
- Heavy stainless strike rail
- Anodized slotted toe rail
- Dual stainless hawse pipes for mooring lines
- Anchor storage with stainless deck pipe
- Molded gelcoat sheer stripe. 2-part polyurethane boot stripe
- Iso-NPG gelcoat
- Mast light, steaming, anchor combination

Основная информация

Тип судна: Крейсерская яхта

Подкатегория: Sloop

Модельный год: 2009

Год постройки: 2009

Страна: Mexico

Верх: Dodger

Кубрик: Да

Размеры

Длина общая: 35' 0" (10.67m)

Длина по ватерлинии: 30' 7" (9.32m)

Ширина: 106' 0" (32.31m)

Мин. осадка: 1' 8" (0.51m)

Макс. осадка: 6' 6" (1.98m)

Скорость, вместимость и масса

Водоизмещение: 8300 Pounds

Вместимость воды: 65 Gallons

Вместимость сточного бака: 30 Gallons

Объем топливного бака: 20 Gallons

Размещение

Всего кают: 1

Всего коек: 4

Спальные места: 7

Всего ком. состава: 1

Корпус и палуба

Материал корпуса: Fiberglass

Комплектация корпуса: Fin & Bulb

Цвет корпуса: White

Информация о двигателе

Двигатели: 1

Производитель: Yanmar

Модель: 3YM30

Тип двигателя: Inboard

Тип топлива: Diesel

ПОДРОБНОЕ ОПИСАНИЕ

BROKERS COMMENTS

Built by Hake Yachts yard in Stuart Florida, the Seaward yacht lines are known for their unique sailing abilities; Under sail this 32 RK model is stiff in most sea conditions, with the lifting keel fully extended to a depth of 6'7" and her 2500 lb lead bulb at the bottom of the monohull and high aspect ratio foil rig, She is a well known shallow water cruiser with her retractable keel raising up for a min draft of under 2 feet.

Hake Yachts' reputation for building quality sailboats is unmatched in the industry and their tradition of quality and innovation has been diligently maintained for over 35 years.

These unique vessels have a loyal fan base and are well respected for their exceptional performance, shallow water capabilities and fine build qualities. **SPECIFICATIONS - EQUIPMENT**

Dimensions LOA: 32 ft 0 in Beam: 10 ft 6 in LWL: 30 ft 7 in Minimum Draft: 1 ft 8 in Maximum Draft: 6 ft 6 in Ballast: 2500 lbs Headroom: 6 ft 5 in Dry Weight: 8300 lbs **Engines** Engine Brand: Yanmar Year Built: 2010 Engine Model: 3YM30 Engine Type: Inboard Engine/Fuel Type: Diesel Propeller: 3 blade propeller Drive Type: Direct Drive Engine Power: 30 HP **Tanks** Fresh Water Tanks: (65 Gallons) Fuel Tanks: (20 Gallons) Holding Tanks: (30 Gallons) **Accommodations** Number of single berths: 1 Number of double berths: 3 Number of cabins: 1 Number of heads: 1 **Electronics** VHF Compass Plotter - Raymarine Depthsounder - Raymarine Wind speed and direction - Raymarine Navigation center GPS - Raymarine Stereo - Bluetooth Cockpit speakers Log-speedometer - Raymarine Autopilot - Raymarine **Sails** Furling genoa Fully battened mainsail Working Sail Area : 460.00 sq ft **Inside Equipment** Battery charger Air conditioning Electric bilge pump Marine head Refrigerator Hot water **Electrical Equipment** Shore power inlet Electrical Circuit: 110V **Outside Equipment/Extras** Cockpit cushions Cockpit shower Outboard engine brackets Swimming ladder Electric windlass **Covers** Bimini Top Mainsail cover **Standard Equipment**

- Yanmar diesel, 3YM30, 30hp, heat exchanger cooled
- Layup is handlaid unidirectional fiberglass, critical laminates of hull, keel, rudder and trunk are of carbon fiber
- Wheel steering, with 36" stainless wheel
- Fully battened, full-roached mainsail with reef points
- Roller furled 135 genoa with suncover
- Genoa tracks and blocks, double lead cars
- Internal halyards and outhauls
- Self tailing winches, two #40 two-speed sheet winches, two #16 halyard winches
- Electric refrigeration, 12 volt
- Stainless opening ports with screens (8)
- Vertically retracting high aspect keel, electrically operated

- Vertically retracting high aspect rudder
- Interior cushions
- Deluxe hatches (2)
- Stainless cowl vents w/dorades (2)
- Dinette table
- Sinks: double bowl in galley, single in head
- 65 Gallon fresh water supply
- Circuit breaker panel, ac/dc
- Fully molded structural headliner
- Teak and holly sole in salon
- 2 Teak privacy doors
- Private head with separate shower
- Batteries: 2
- Four stainless four bolt yacht cleats
- Bowsprit with rollers for two anchors
- Bow pulpit with double lifelines
- Stern rail with stern rail seats
- Swim ladder and swim shower at transom
- Running lights
- Heavy stainless strike rail
- Anodized slotted toe rail
- Dual stainless hawse pipes for mooring lines
- Anchor storage with stainless deck pipe
- Molded gelcoat sheer stripe. 2-part polyurethane boot stripe
- Iso-NPG gelcoat
- Mast light, steaming, anchor combination
-

Исключения

При продаже яхты исключаются личные вещи владельца.

Отказ от ответственности

Компания предоставляет описание судна или яхты добросовестно, но не может гарантировать точность этой информации, а также не ручается за техническое состояние. Покупатель должен проинструктировать своих агентов или оценщиков исследовать представленную информацию более подробно, по собственному желанию. Продажа судна или яхты, изменение цены или снятие с продажи будет происходить без предварительного уведомления.

ФОТОГРАФИИ

S/V FLYING H 32'_02



S/V FLYING H 32'_03



S/V FLYING H 32'_04



S/V FLYING H 32'_05



S/V FLYING H 32'_06



S/V FLYING H 32'_07



S/V FLYING H 32'_08



S/V FLYING H 32'_09



S/V FLYING H 32'_10



S/V FLYING H 32'_11



S/V FLYING H 32'_15



S/V FLYING H 32'_16



S/V FLYING H 32'_17



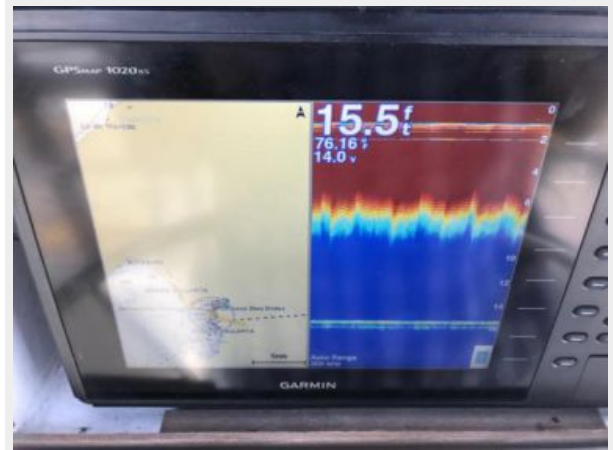
S/V FLYING H 32'_18



S/V FLYING H 32'_19



S/V FLYING H 32'_20



S/V FLYING H 32'_21



S/V FLYING H 32'_22



S/V FLYING H 32'_23



S/V FLYING H 32'_24



S/V FLYING H 32'_25



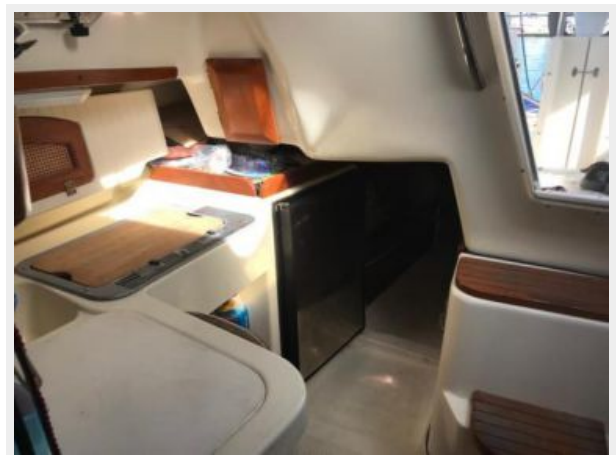
S/V FLYING H 32'_26



S/V FLYING H 32'_27



S/V FLYING H 32'_28



S/V FLYING H 32'_29



S/V FLYING H 32'_30



S/V FLYING H 32'_31



S/V FLYING H 32'_32



S/V FLYING H 32'_33



S/V FLYING H 32'_34



S/V FLYING H 32'_35



КОНТАКТЫ

Андрей Шестаков (Andrey Shestakov) – ведущий яхтенный брокер отдела продаж яхт и судов компании Shestakov Yacht Sales Inc. Официальный представитель Shestakov Yacht Sales Inc. для русскоговорящих клиентов в центральном офисе компании в Майами/Форт Лодердейл/Флорида/США.

Контактная информация

Email: andrey@shestakovyachtsales.com

Web: shestakovyachtsales.com

Телефоны

Краснодарский край: **+7(918)465-66-44**

США, Майами, Флорида: **+1(954)274-4435**

Время работы

Понедельник – Суббота: **9:00 - 21:00**
EDT

Воскресенье: **Закрито**

Адрес



Harbour Towne Marina, 850 NE 3rd St,
STE 213, Dania, FL 33004