

ANNA J — OCEANCO



Builder: OCEANCO

Year Built: 1994

Model: Motor Yacht

Price: PRICE ON APPLICATION

Location: Netherlands

LOA: 162' 0" (49.38m)

Beam: 29' 3" (8.92m)

Max Draft: 7' 6" (2.29m)

Cruise Speed: 17 Kts. (20 MPH)

Max Speed: 23 Kts. (26 MPH)

Our experienced yacht broker, Andrey Shestakov, will help you choose and buy a yacht that best suits your needs **ANNA J — OCEANCO** from our catalogue. Presently, at Shestakov Yacht Sales Inc., we have a wide variety of yachts available on our sale's list. We also work in close contact with all the big yacht manufacturers from all over the world.

If you would like to buy a yacht **ANNA J — OCEANCO** or would like help answering any questions concerning purchasing, selling or chartering a yacht, please call **+1(954)274-4435**

TABLE OF CONTENTS

TABLE OF CONTENTS	2
SPECIFICATIONS	4
Overview	4
Basic Information	4
Dimensions	4
Speed, Capacities and Weight	4
Accommodations	5
Hull and Deck Information	5
Engine Information	5
DETAILED INFORMATION	6
Overview	6
Accommodations	6
Galley and Laundry Equipment	6
Deck Equipment	7
Entertainment Systems	7
Main Machinery	7
Communication and Navigational Equipment	7
Safety and Security Equipment	7
Tenders and Toys	8
Exclusions	8
Disclaimer	8
PHOTOS	9
Main Salon	9
Main Salon	9
Main Salon	9
Dining Area	9
Dining Area	9
Master Stateroom Hallway	9

Master Stateroom	9
VIP Stateroom	9
Skylounge	10
Skylounge	10
Jacuzzi	10
Skylounge	10
Engine Room	10
Port Bow Profile	10
Aerial Upper Deck	11
Port Bow Profile	11
Layout	11
CONTACTS	12
Contact details	12
Telephones	12
Office hours	12
Address	12

SPECIFICATIONS

Overview

This serial yacht owner, purchased ANNA J, re-located her in Holland and immediately embarked on a 3+ year methodical refit. A mechanical and exterior refit, along with a full paint job have now been completed. The 4-meter extension, constructed under the watchful eye of Naval Architects “Van Dorrestejn Design” and handcrafted by Dutch Shipbuilders, now give ANNA J a wonderfully balanced profile. The minimalist interior designed by “Manhattan Style” give a very fresh and contemporary feel.

Basic Information

Category: Motor Yacht

Model Year: 1994

Year Built: 1994

Refit Year: 2019

Country: Netherlands

Dimensions

LOA: 162' 0" (49.38m)

LWL: 138' 4" (42.16m)

Beam: 29' 3" (8.92m)

Max Draft: 7' 6" (2.29m)

Speed, Capacities and Weight

Cruise Speed: 17 Kts. (20 MPH)

Cruise Speed Range: 3700

Max Speed: 23 Kts. (26 MPH)

Displacement: 646000 Pounds

Gross Tonnage: 475 Pounds

Water Capacity: 5737 Gallons

Holding Tank: 288 Gallons

Fuel Capacity: 13596 Gallons

Accommodations

Total Cabins: 6

Sleeps: 12

Captain Cabin: True

Crew Berths: 10

Crew Sleeps: 10

Hull and Deck Information

Hull Material: Aluminum

Hull Configuration: Semi-Displacement

Hull Designer: Oceanco

Exterior Designer: Richard Hein/The A Group

Interior Designer: Manhattan Style

Engine Information

Engines: 2

Manufacturer: MTU

Model: 16V396 TE94

Fuel Type: Diesel

DETAILED INFORMATION

Overview

*Not available for sale to US residents while in US waters.

This serial yacht owner, purchased ANNA J, re-located her in Holland and immediately embarked on a 3+ year methodical refit. A mechanical and exterior refit, along with a full paint job have now been completed. The 4-meter extension, constructed under the watchful eye of Naval Architects "Van Dorrestejn Design" and handcrafted by Dutch Shipbuilders, now give ANNA J a wonderfully balanced profile. The minimalist interior designed by "Manhattan Style" give a very fresh and contemporary feel. From the very tip of her proud and new communication mast to the bottom of her keel, all has been painted, inspected, repaired or replaced. The engine room now gleams, bristling with new or serviced machinery, a very different story compared to when she was purchased. The refit is complemented by 2 x New Castoldi Jet tenders 21' x 16'. They set the tone for the quality of this in-depth refit. (tenders available via separate negotiation) This pedigree OCEANCO Super Yacht, after the extensive rework is now beautifully balanced in her profile, importantly the extension was designed so ANNA J comes in under 50m and 500GT. Naiad Fin stabilizers provide a smooth ride underway and the addition of 4 x Zero Speed Gyro stabilizers ensure a good night sleep at anchor. An excel spreadsheet on the refit is available upon request.

Accommodations

ANNA J's flexible layout consists of a a large open plan Master stateroom is positioned forward on the main deck with the entrance on the starboard side. The cabin is fitted with a king size bed and ensuite shower and bathroom including a Jacuzzi, twin his and hers sinks and is finished in stunning marble. Guest accommodation includes 2 spacious VIP cabins with large double beds and an ensuite bathroom with a Jacuzzi. The cabin is richly appointed with fine fabric covered bulkheads, curtains and fitted carpets. These two cabins can be converted into one full beam VIP stateroom. Twin accommodations include 2 twin cabins both with ensuite bathrooms. On the bridge deck there is a 6th guest/staff ensuite double cabin. Crew 1 x double Captain's cabin with ensuite bathroom 4 x bunk cabins each with ensuite bathroom

Galley and Laundry Equipment

Main Galley 2 x Gaggenau Fridges 2 x Gaggenau Freezers 2 x Miele Ovens 1 x Miele Ceramic Hob 1 x Miele Electric Grill 1 x Miele Dish Washer 1 x Gaggenau Air Extractor Fan and Service Lift Laundry 2 x Professional Miele Washing Machines 2 x Miele Dryers 1 x Iron Stirella Pro 1 x Miele Electronic Roll Press Sundeck 1 x Grill Main Salon Pantry 1 x Miele Dishwasher 1 x Miele Fridge 1 x Miele Freezer 1 x Gaggenau Microwave Oven 1 x Gaggenau Coffee Maker 1 x

Gaggenau Ice Maker 1 x Gaggenau Ceramic Hob

Deck Equipment

ANCHOR WINDLASS Muir Engineering AFT WARPING CAPSTANS Muir Vertical Capstans
VHS 5000 TENDER & RESCUE DAVITS 1 x Motomar Type B passerelle

Entertainment Systems

STEREO/HI-FI 7 x CD Players 6 x Sony Mini Hi-Fi Systems TV Seatel Satellite Tracking system
Sat TV, Echostar and Sky Digibox Satellite TV receiver and decoders 12 x TV sets in the
accommodation areas 9 x DVD player

Main Machinery

Main Engines: 2 x MTU 16V396TE94, 3000hp engines Engine hours: Since W5+; Port 10, Stbd
10 Props: 2 x 5-bladed propellers Generators: 3 x John Deer 6068TF001, 66 KW @ 1,500 rpm,
coupled to Northern Light M6414T alternators Generator hours SMOH; Port 19, Center 11, Stbd
13 Watermakers: 2 x HEM producing 8,000 Litres per day Bow thrusters: HYDROMAT HBT GF
6090 75Kw NAIAD Stabilizers Fuel Treatment: Alfa Laval System 3 x Marine Air MCW144K
HMCP20K air conditioning units

Communication and Navigational Equipment

RADIO TELEPHONES 1 x HF SSB radio system VHF 3 x VHF stations fitted at the main and
flybridge steering positions 8 X ICOM VHF portable units SATCOM 1 x INMARSAT Thrane &
Thrane TT3606G 1 x Mini M and Fleet 55 Thrane & Thrane 1 x VSAT for Internet AUTO PILOT 1
x C Plath Navipilot V – Gryo Navigator COMPASS 1 x Riviera Magnetic Compass 1 x G Plath
Gyro Stabilised Compass GPS 1 x Simrad multisync plotter 1 x Simrad GN33 chart plotter 1 x
Furuno GP32 RADAR 1 x Furuno Arpa 92 nm range 1 x Simrad RA 54, 64 nm range NAVETEX
1 x Furuno NX500 SPEED LOG & FISH FINDER Furuno FCV 663 WIND SPEED &
DIRECTION 2 x B&G Hydra 2 with depth meter function

Safety and Security Equipment

Safety 32 x Life jackets 2 x Viking Life Saving 16 man 1 x Viking Life Saving 8 man Fire-fighting
Equipment 5 x 45kg CO2 cylinders 7 x 6kg & 17 x 2kg dry powder extinguishers in the
accommodation. 4 x 5kg & 2 x 1kg CO2 extinguishers in the engine room. 2 x 6kg Foam 2 x 1kg
Halon Security Panasonic CCTV System

Tenders and Toys

1 x Castoldi 21' Jet (new) 1 x Castoldi 16' Jet (new)

Exclusions

Owner's personal belongings.

Disclaimer

The Company offers the details of this vessel or yacht in good faith but cannot guarantee or warrant the accuracy of this information nor warrant the condition of the vessel. A buyer should instruct his representatives, agents, or his surveyors, to investigate such details as the buyer desires validated. This vessel or yacht is offered subject to prior sale, price change, or withdrawal without notice.

PHOTOS

Main Salon



Main Salon



Main Salon



Dining Area



Dining Area



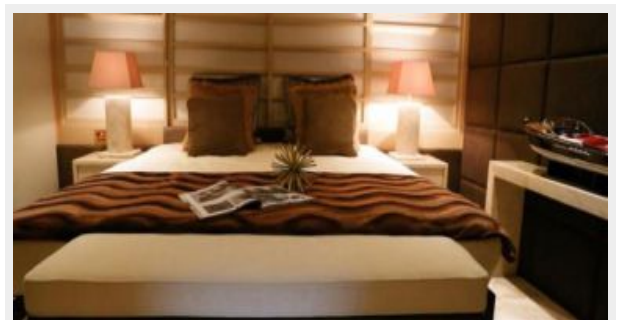
Master Stateroom Hallway



Master Stateroom



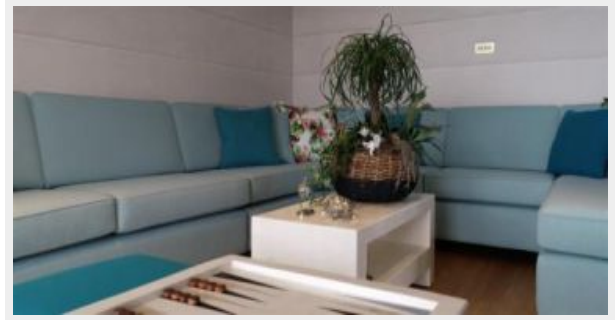
VIP Stateroom



Skylounge



Skylounge



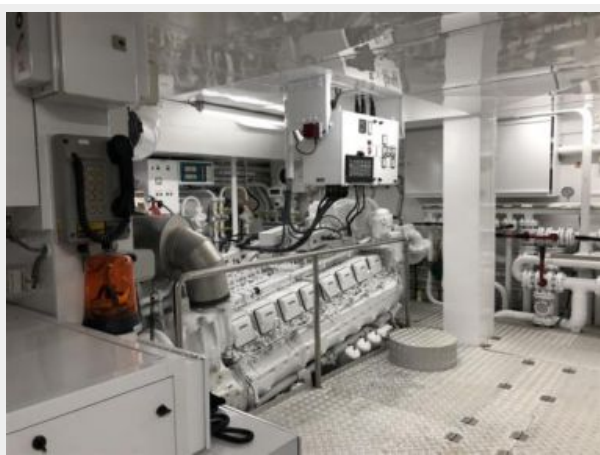
Skylounge



Jacuzzi



Engine Room



Port Bow Profile



Aerial Upper Deck



Port Bow Profile



Layout



CONTACTS

Andrey Shestakov, leading yacht broker of the sales department of Shestakov Yacht Sales Inc. Shestakov Yacht Sales Inc., the official representative of the Miami/Fort Lauderdale FL headquarters.

Contact details

Email: andrey@shestakovyachtsales.com

Web: shestakovyachtsales.com/en/

Telephones

USA: +1(954)274-4435

Office hours

Monday – Saturday: **9:00 - 21:00** EDT

Sunday: **closed**

Address



Harbour Towne Marina, 850 NE 3rd St,
STE 213, Dania, FL 33004