

HAPPY PAPPY



Year Built: 2001

Model: Cruising Yacht

Price: PRICE ON APPLICATION

LOA: 46' 4" (14.12mm)

Beam: 14.91

Max Draft: 4' 1" (1.24mm)

Cruise Speed: 24 Knots Kts. (28 MPH)

Max Speed: 29 Knots Kts. (33 MPH)

Our experienced yacht broker, Andrey Shestakov, will help you choose and buy a yacht that best suits your needs **Happy Pappy** — n/a from our catalogue. Presently, at Shestakov Yacht Sales Inc., we have a wide variety of yachts available on our sale's list. We also work in close contact with all the big yacht manufacturers from all over the world.

If you would like to buy a yacht **Happy Pappy** — n/a or would like help answering any questions concerning purchasing, selling or chartering a yacht, please call **+1(954)274-4435**

TABLE OF CONTENTS

TABLE OF CONTENTS	2
SPECIFICATIONS	3
Overview	3
Basic Information	3
Dimensions	3
Speed, Capacities and Weight	3
Accommodations	3
Hull and Deck Information	4
Engine Information	4
PHOTOS	5
CONTACTS	11
Contact details	11
Telephones	11
Office hours	11
Address	11

SPECIFICATIONS

Overview

This 2002 40 Riviera is a clean, well-kept fishing and cruising yacht. She has several custom upgrades and features, such as newer Raymarine electronics, synthetic teak flooring in the cockpit and flybridge and a full isinglass enclosure. This boat was designed and built in Australia, with the harsh southern pacific sea conditions in mind; it has excellent sea keeping abilities. The interior is a unique layout with a v-berth master and three single berths in the guest stateroom. The reliable 450HP Cummins diesels have only 800 hours and are well maintained!

Basic Information

Category: Cruising Yacht

Model Year: 2002

Year Built: 2001

Dimensions

LOA: 46' 4" (14.12mm)

LOD: 40' (12.19mm)

Beam: 14.91

Max Draft: 4' 1" (1.24mm)

Speed, Capacities and Weight

Cruise Speed: 24 Knots Kts. (28 MPH)

Max Speed: 29 Knots Kts. (33 MPH)

Water Capacity: 119 Gallons

Holding Tank: 20 Gal Gallons

Fuel Capacity: 473 Gal Gallons

Accommodations

Total Cabins: 2

Total Berths: 4

Sleeps: 5

Total Heads: 1

Hull and Deck Information

Hull Material: Fiberglass

Deck Material: Fiberglass

Hull Configuration: Modified Deep Vee

Hull Color: White

Engine Information

Engines: 2

Manufacturer: Cummins

Engine Type: Inboard

Fuel Type: Diesel

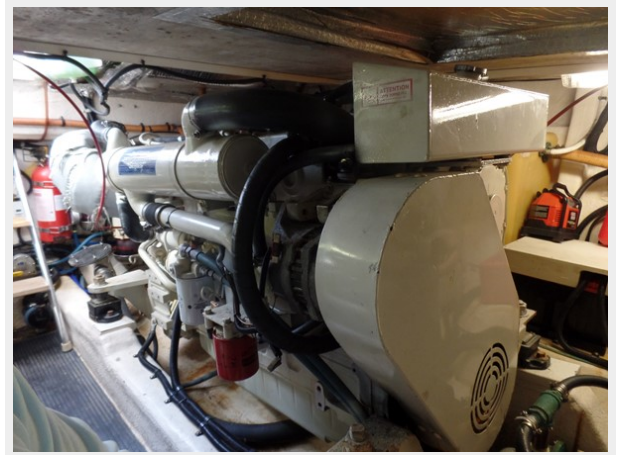
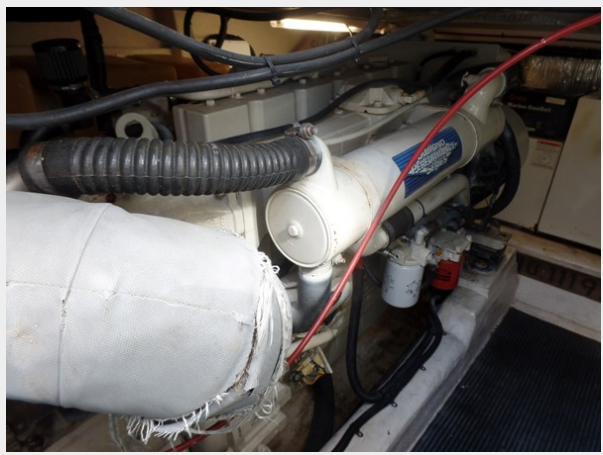
PHOTOS













CONTACTS

Andrey Shestakov, leading yacht broker of the sales department of Shestakov Yacht Sales Inc. Shestakov Yacht Sales Inc., the official representative of the Miami/Fort Lauderdale FL headquarters.

Contact details

Email: andrey@shestakovyachtsales.com

Web: shestakovyachtsales.com/en/

Telephones

USA: +1(954)274-4435

Office hours

Monday – Saturday: **9:00 - 21:00** EDT

Sunday: **closed**

Address



Harbour Towne Marina, 850 NE 3rd St,
STE 213, Dania, FL 33004