

JOPAJU — WESTPORT



Судостроитель: WESTPORT

Год постройки: 2012

Модель: Моторная яхта

Цена: ЦЕНА ЯХТЫ ПО ЗАПРОСУ

Местонахождение: United States

Длина общая: 112' 1" (34.16m)

Ширина: 23' 9" (7.24m)

Макс. осадка: 5' 6" (1.68m)

Крейс. скорость: 20 Kts. (23 MPH)

Макс. скорость: 25 Kts. (29 MPH)

Купить **JOPAJU — WESTPORT** а также выбрать подходящую вам яхту из нашего каталога яхт вам поможет опытный яхтенный брокер Андрей Шестаков. На сегодняшний день компания **Shestakov Yacht Sales Inc.** имеет большое количество яхт в собственном списке продаж, а также тесно сотрудничает со всеми крупными яхтенными производителями по всему миру.

Для того чтобы купить яхту **JOPAJU — WESTPORT** а также проконсультироваться по любому вопросу связанному с покупкой, продажей, чартером яхт позвоните по телефону **+7(918)465-66-44**.

ОГЛАВЛЕНИЕ

ОГЛАВЛЕНИЕ	2
ХАРАКТЕРИСТИКИ	4
Обзор	4
Основная информация	6
Размеры	6
Скорость, вместимость и масса	6
Размещение	6
Корпус и палуба	7
Информация о двигателе	7
ПОДРОБНОЕ ОПИСАНИЕ	8
Detailed Description	8
Detailed Description	21
Исключения	23
Отказ от ответственности	23
ФОТОГРАФИИ	24
Galley	25
Dining Room	25
Steps to Master	26
Galley	26
Master Bath	26
Master	26
Master	26
Master Bath	26
Guest	27
Guest	27
Guest Head	27
Guest	27
Guest	27

VIP	27
VIP	28
VIP	28
КОНТАКТЫ	29
Контактная информация	29
Телефоны	29
Время работы	29
Адрес	29

ХАРАКТЕРИСТИКИ

Обзор

Crisp, classic styling balanced with timeless traditional appeal keynotes a vessel of extraordinary performance, one that has been built to uncompromising standards of structural integrity and quality. Welcome to Jopaju, a 112' Westport yacht designed to flawless precision.

Built in 2012, Jopaju embodies the sleek styling that is the Westport signature. Featuring walkaround side decks, Jopaju facilitates the ultimate in relaxation with a spacious flybridge boasting a full bar and ample seating. A large sunpad and a Jacuzzi tub can be found steps down, while further dining and relaxation areas continue on the bow and aft deck

With 360-degree views throughout, you'll always have the best seat in the house. The combination of spacious staterooms and expansive windows blur the boundaries between indoors and out. So, whether you're entertaining guests on the aft deck or retiring to the main salon for a nightcap, every new day brings a new spectacular view.

Featuring a classic yet timeless décor and modern amenities, Jopaju is designed to facilitate a relaxing, sophisticated charter. This Westport 112 sleeps up to 8 guests in 4 luxurious staterooms, including a master suite and 3 double cabins.

Boat Name

Jopaju

Specs

Flag of Registry: United States

Dimensions

LOA: 112 ft 0 in

Beam: 23ft 9 in

Maximum Draft: 5 ft 6 in

Dry Weight: 258000 lbs

Engines

Total Power: 4000 HP

Engine 1:

Brand: MTU

Engine Model: 16v2000

Engine/Fuel Type: Diesel

Location: Port

Engine Hours: 2808 HR

Engine Power: 2000 HP

Engine 2:

Brand: MTU

Engine Model: 16v2000

Engine/Fuel Type: Diesel

Location: Starboard

Engine Hours: 2808 HR

Engine Power: 2000 HP

Cruising Speed: 22 knots

Maximum Speed: 26 knots

Accommodations:

Number of cabins: 4

Number of heads: 5

Full Specifications

Walkthrough JOPAJU is a single owner 112' Westport which offers a standard layout with full-beam master and (2) guest staterooms with en-suite heads on the lower deck plus an additional VIP stateroom forward. The condition of the interior is like new featuring the raised Crotch Mahogany wood finish.

****Key Features:**

Nautical Structures hydraulic passerelle Naiad At-Rest (zero-speed) stabilizers Carbon fiber 8-step Tide-Ride boarding ladder

Основная информация

Тип судна: Моторная яхта

Модельный год: 2012

Год постройки: 2012

Страна: United States

Открытая палуба мостика: Да

Размеры

Длина общая: 112' 1" (34.16m)

Ширина: 23' 9" (7.24m)

Макс. осадка: 5' 6" (1.68m)

Трапы: 34' 0" (10.36m)

Скорость, вместимость и масса

Крейс. скорость: 20 Kts. (23 MPH)

Макс. скорость: 25 Kts. (29 MPH)

Дальность на макс. скорости: 2500 Kts.

Водоизмещение: 258000 Pounds

Вместимость воды: 1000 Gallons

Вместимость сточного бака: 600 Gallons

Объем топливного бака: 5480 Gallons

Размещение

Всего кают: 4

Всего коек: 4

Спальные места: 8

Всего ком. состава: 5

Каюта капитана: Да

Каюты экипажа: 3

Койки экипажа: 5

Спальных мест экипажа: 5

Комм. состав экипажа: 2

Корпус и палуба

Материал корпуса: Composite

Материал палубы: Teak

Цвет корпуса: White

Дизайнер корпуса: Westport

Дизайнер экстерьера: Westport

Дизайнер интерьера: Westport

Информация о двигателе

Двигатели: 2

Производитель: MTU

Модель: 16V2000 M86

Тип топлива: Diesel

ПОДРОБНОЕ ОПИСАНИЕ

Detailed Description

This incredible yacht has had one meticulous owner and it is in pristine condition. During her build she had many custom upgrades that make her a very special 112' Westport.

Crisp, classic styling balanced with timeless traditional appeal keynotes a vessel of extraordinary performance, one that has been built to uncompromising standards of structural integrity and quality. Welcome to Jopaju, a 112' Westport yacht designed to flawless precision.

Built in 2012, Jopaju embodies the sleek styling that is the Westport signature. Featuring walkaround side decks, Jopaju facilitates the ultimate in relaxation with a spacious flybridge boasting a full bar and ample seating. A large sun pad and a Jacuzzi tub can be found steps down, while further dining and relaxation areas continue on the bow and aft deck

With 360-degree views throughout, you'll always have the best seat in the house. The combination of spacious staterooms and expansive windows blur the boundaries between indoors and out. So, whether you're entertaining guests on the aft deck or retiring to the main salon for a nightcap, every new day brings a new spectacular view.

Featuring a classic yet timeless décor and modern amenities. This Westport 112 sleeps up to 8 guests in 4 luxurious staterooms, including a master suite and 3 double cabins.

Boat Name

Jopaju

Specs

Flag of Registry: United States

Dimensions

LOA: 112 ft 0 in

Beam: 23ft 9 in

Maximum Draft: 5 ft 6 in

Dry Weight: 258000 lbs

Engines

Total Power: 4000 HP

Engine 1:

Brand: MTU

Engine Model: 16v2000

Engine/Fuel Type: Diesel

Location: Port

Engine Hours: 2603 HR

Engine Power: 20000 HP

Engine 2:

Brand: MTU

Engine Model: 16v2000

Engine/Fuel Type: Diesel

Location: Starboard

Engine Hours: 2607 HR

Engine Power: 2000 HP

Cruising Speed: 22 knots

Maximum Speed: 26 knots

Accommodations:

Number of cabins: 4

Number of heads: 5

Full Specifications

Walkthrough JOPAJU is a single owner 112' Westport which offers a standard layout with full-beam master and (2) guest staterooms with en-suite heads on the lower deck plus an additional VIP stateroom forward. The condition of the interior is like new featuring the raised Crotch Mahogany wood finish.

****Key Features:**

Nautical Structures hydraulic passerelle Naiad At-Rest (zero-speed) stabilizers Carbon fiber 8-step Tide-Ride boarding ladder

Main Salon

Raised buffets port and starboard, lower side buffets: stone is custom petrified wood with crescent edge tops added by current owner

Outboard cabinets have Crotch Mahogany veneer and Sapele with high gloss

Sofa and love seat placed in “L” configuration

2 rotating leather lounge chairs

Game table with (2) smaller wood chairs

Includes a walkup bar with combo Uline refrigerator/ice maker, and storage Bar top has Crotch Mahogany veneer top with high gloss Sapele edge and inlaid stone behind doors Mirror polished stainless round sink, and chrome faucet Perimeter soffit with crown molding and rope light

Dining

Domed overhead ceiling feature (oval) is over the dining area, with dining pendant and overhead ceiling feature in the Salon Formal dining room.

Upgraded Chadwick table and (8) chairs (formal dining service)

Two mirrored Lucite storage cases One case holds provided formal china (12 five-piece place settings) The other case holds provided formal crystal which includes 12 each of the following: wine, water, and champagne glasses. (Formal five-piece flatware is stored above cases) Storage for CD's, videotapes and DVDs Majilite vinyl headliner window treatments as specified by designer, Fashion Tech blinds Shades use Somfy motors with RTS control Large 4-panel polished stainless-steel sliding door, weather tight, and direct bonded glass

Galley

Amtico commercial vinyl flooring in a hardwood pattern with elegant inlaid border Perimeter soffit with crown molding and rope light Sapele Hardwood and Tiama cabinetry. (Included are the cabinets along starboard wall under windows) Built-in storage, fabric as specified by Westport Interior Design Table is stone with crescent edge Stone countertops with crescent edge Crotch Mahogany counters and Sapele edge with high gloss finish in dinette Fashion Tech blinds and shades use Somfy motors with RTS control Stainless Kohler extra deep sink with Kohler cutting board and Altmans soap dispenser and Altman faucet Cooktop pan holders Walk-in pantry located off of Port Companionway Pantry has storage, stackable washer and dryer, under counter icemaker and under counter wine cooler SubZero 48" refrigerator Dacor 5-burner touch cooktop

WOLF 30" E Series Transitional Single Oven is WiFi enabled with double paneled windows, and a well lit interior. There are a variety of modes including delayed start, Sabbath Mode, dual convection, dehydrating and proofing, as well as all traditional modes of oven use. It also is capable of temperature probe cooking and boasts an efficient self cleaning mode.

MIELE 24" Fully Integrated, Express/Intense Zonemis equipped with A 3D Multiplex Tray. Extra quiet with fine china/crystal cycle, turbo dry feature to leave everything, including plastics, water spot free. There is a scrub cycle for heavy duty pots and pans cleaning, leaving time to kick back and relax

Microwave/Vent Hood GE Broan trash compactor Insinkerator hot water dispenser Uline wine cooler Uline Ice maker Miele Novotronic washing machine Miele Novotronic dryer

Master Stateroom

California King (72" x 84") berth, upholstered headboard, and the bunk rail lifts up on gas springs to storage below. The pedestal has two raised panel drawers built-in.

Berth flat extends from the pedestal to create a recess for under mount rope lighting Recessed Halogen room lights (2) Reading lights (2) Table lamps for end tables Indirect rope accent lighting under berth and above soffits

Special lighting outboard at hull side behind Roman blinds

Overhead lights (rope lights) above berth Bronze mirrors on bulkhead above headboard. Clear mirror on inside wardrobe door. Walk-in wardrobe, lined with aromatic cedar, automatic light, closet rod and cedar shelf Mahogany top and Sapele edge with high gloss finish counters Roman shade and blinds Portlight opening with privacy covers Sapele trim Soffit with Sapele trim joinery (2) Nightstands with drawers (1) 15-drawer dresser (2) End table cabinets (1) Sofa Digital safe in walk-in closet

Master Head Marble shower with Altmans fixtures Eurostyle frameless tempered glass doors and chrome latches Marble counters with crescent edge

A narrow extension of vanity counter continues onto forward bulkhead (2) Kohler Vintage sinks with Jado Wynd fixtures, platinum nickel finish (2) Mirrored medicine cabinets Light-up makeup mirrors above each vanity also include two (2) freestanding vanity stools Fixed mirrors on forwarding bulkhead Majilite vinyl headliner and Majilite trim Recessed Halogen room lights and vanity lights Marble tile flooring Altmans bath accessories (2) Each: soap dish, covered toilet tissue holder, towel bar, towel ring, robe hook Full-Width vanities, port and starboard Linen lockers port and starboard Clothes hamper port and starboard Two Headhunter Royal Flush Hydro Vac toilets

Mid Guest Foyer

Bronze with Mahogany trim

Mahogany cabinet with stone top per interior designer

Artwork above cabinet per interior designer

Marble tile flooring

Overhead lighting

Guest stairs have lift-up section to allow for storage

Guest Stateroom Port

Queen berth, upholstered headboard, and the bunk rails lift up on gas springs to storage below

The bed platform has two raised panel drawers built in

Recessed Halogen room lights (2) Reading lights Indirect rope accent lighting under berth and above soffits Bronze mirrors on aft bulkhead above the headboard. Clear full-length mirror on outside wardrobe door Lined wardrobe with aromatic cedar, automatic light, closet rod and cedar shelf with keeper

Crotch Mahogany countertop and Sapele edge with high gloss finish Roman shade and blinds Portlight opening with privacy cover Sapele trim Soffit with Sapele trim for lighting (2) Three-drawer night stands (1) Five-drawer dresser Entertainment center with doors and 5-drawer dresser below

Port Guest Head

Headhunter Royal Flush Hydro Vac toilet The shower is molded fiberglass Altmans fixtures with Eurostyle frameless tempered glass doors with chrome hardware The shower includes a sealed light Kohler vintage sink with Altmans fixtures Wall mirror above vanity Recessed Halogen room lights, vanity lighting Stone tile flooring as specified by Westport Interior Design Stone counters with crescent edge Altmans bath accessories (1) Each: soap dish, covered toilet tissue holder, towel bar, towel ring, robe hook Vanity & Medicine cabinet

Guest Stateroom Starboard

Queen berth, upholstered headboard, and the bunk rails lift up on gas springs to storage below

The bed platform has two raised panel drawers built in

Recessed Halogen room lights (2) Reading lights Indirect rope accent lighting under berth and above soffits Bronze mirrors on aft bulkhead above the headboard. Clear full-length mirror on outside wardrobe door Lined wardrobe with aromatic cedar, automatic light, closet rod and cedar shelf with keeper

Crotch Mahogany countertop and Sapele edge with high gloss finish Roman shade and blinds Portlight opening with privacy cover Sapele trim Soffit with Sapele trim for lighting (2) Three-drawer night stands (1) Five-drawer dresser Entertainment center with doors and 5-drawer dresser below **Starboard Guest Head** Headhunter Royal Flush Hydro Vac toilet The shower is molded fiberglass

Altmans fixtures with Eurostyle frameless tempered glass doors with chrome hardware The shower includes a sealed light Kohler vintage sink with Altmans fixtures Wall mirror above vanity Recessed Halogen room lights, vanity lighting Stone tile flooring as specified by Westport Interior Design Stone counters with crescent edge Altmans bath accessories (1) Each: soap dish, covered toilet tissue holder, towel bar, towel ring, robe hook Vanity & Medicine cabinet

VIP Stateroom

Queen berth, upholstered headboard, and the bunk rail lifts up on gas springs to storage below Berth flat extends from the pedestal to create a recess for under mount rope lighting Recessed Halogen room and reading lights Indirect rope accent lighting is under the berth and above soffit Bronze mirrors on forward bulkhead above headboard Clear full-length mirror on wardrobe door Walk-in wardrobe, lined with aromatic cedar, automatic light, closet rod and cedar shelf with keeper Crotch Mahogany countertop and Sapele edge with high gloss finish Over berth, 24" round hatch Sapele trim Soffit for lighting (2) Built-in bookcases at headboard, vanity/desk, entertainment center, cabinet in stairwell locker, dresser & upper cabinets with doors Separate access from the country galley

VIP Head Custom molded fiberglass shower with Eurostyle frameless tempered glass door and Altman fixtures

Sealed shower light Headhunter Royal Flush Hydro Vac toilet Stone counters with crescent edge Kohler vintage sink with Altmans fixtures Mirror above vanity Recessed Halogen room lights and vanity lighting Stone flooring as specified by Westport Interior Design Altmans bath accessories (1) Each: soap dish, covered toilet tissue holder, towel bar, towel ring, robe hook, vanity, medicine cabinet & linen cabinet **Pilothouse** Wooden 24" Destroyer type wheel MTU Integrated control head engine controls DDC/MTU engine instrumentation Stain resistant carpeting Majilite bulkheads Majilite headliner Black Spinneybeck leather with leather dash hoods control consoles Fabric or leather settee as specified by Westport Interior Design Crotch Mahogany top and Sapele edge with high gloss finish and stainless steel grab rail settee table (3) King heater/defrosters on pilothouse console Exalto windshield wipers with electronic control panel with synchronization and washers for three wipers Crown Mariner helm chair with fabric or leather which matches settee Leather counter Aft bulkhead bronze mirror Built-in Fax Cabinet Crotch Mahogany top and Sapele edge with high gloss finish desk and stool Chart drawers adjacent to console

Helm Station

Linear slot diffusers in soffit and overhead Mesh sunscreen cover for windshield Weems & Plath, 6" Quartz clock dial, 6" Barometer dial Computer with wall mounted monitor located at Navigation station (desk)

Flybridge

Steering controls on centered console Flip Up steering units on port and starboard of flybridge

console Upper bar top is high gloss Teak and the lower bar surface is stone with stainless steel sink/ice bin BBQ area has stone top, TV jack, Uline refrigerator near BBQ Electrichef grill with hood and cover, and four fixed bar stools (1) 24" Stainless steel, Destroyer type helm wheel (2) Crown Mariner with footrests helm chairs Composite construction hard top covering flybridge Deck has 24v overhead deck lighting (1) Teak table, molded settee with cushions and hinged seating for storage below Welded aluminum and composite mast with electronics, anchor light Kahlenberg T2 figure 372 horn, with 1/2" air strainer Custom 1/4" Per-spec in stainless frame (2) Pairs of speakers Handheld waterproof Crestron remote

Foredeck

Bow sun lounge with vinyl cushions, cover and storage below Molded settee keyhole seat with cushion and cover Boson's locker has 110v outlet inside with lights and storage (1) Pair of speakers Handheld Waterproof Crestron Remote

Aft Deck

Includes GE refrigerator, stone top, sink/ice bin with hot and cold water, bar storage

Barware cabinet in port side bulwark

Misting system included in aft deck soffit and overhead appliqué

Includes molded-in settee with cushions (1) High gloss Teak dining/cocktail table on stainless pedestals with electric high/low features (4) Teak dining chairs (3) Teak bar stools Storage lockers located in bulwarks Spiral staircase down to crew quarters with a weather tight door and one up to Boat Deck

Boat Deck

Hydraulic powered Nautical Structures davit

Crane features 359-degrees of rotation, wireless proportional control, and a 2,500 lb. load capacity Stainless rails with mid-rail around boat deck Molded-in spa hot tub with sun pad top and storage below Sun lounge with cushions and covers Stern Flagstaff with 5" x 8" U.S. flag Removable chocks for tender

Swim Platform

Teak decking over composite deck

Hose bibs for washdowns (2) Popup Cleats at the guard (P&S) Gasoline fueling station hatch (100 gallon capacity)Sockets for swim ladder Folding handle swim ladder, stainless Steps to aft deck located port and starboard with Teak covered steps and stainless handrails (2) Maxwell Capstans 3500# 24V DC (2) Mooring Bits - One port, one starboard Pacific Coast Marine watertight access door to utility room Hand Rails: 1 1/2" polished stainless Staple Rails: 2" polished stainless, removable (4) Underwater Lights across the stern

Engine Room

Bright white paint package

One storage cabinet on aft port bulkhead above workbench Removable plywood floorboards with black tile vinyl floor covering Stainless steel workbench with 4" vise Pacific Coast Marine watertight door Engine Room has an FM200 fire suppression system with manual/automatic controls located on the electrical distribution panel The system is tested and issued a certification of inspection by an authorized inspector

****Main Machinery**

Main Engines: (2) MTU/DDC 16V2000 engines, rated at 2000 hp, four-station MDEC controls, integrated station selection and shifter control, MDEC synchronizer and underwater exhaust. Generators: Two 65KW 1800 rpm Northern Lights with compound mounts, sound shields, In Sep(internal water/exhaust separation/mufflers) Hours:Port 5771/Stbd 55644 Water temperature, oil pressure and hour meters are installed on main distribution panel in Crew Quarters Both generators have remote start/stop in Pilothouse PTO and hydraulic pump installed on both generators for full redundancy American Bow Thruster 16"40HP Hydraulic single prop with four-station controls Cast urethane foil shape rudders with stainless stocks; 7.6 square feet Fiberglass sleeves with PYI bearings, dripless seals, and spare seals in carrier 48" Michigan Nibral 5 blade propellers custom wheels 4" Aquamet 22H.S. shafts Shaft log and packing glands to be one piece fiberglass construction with PYI dripless packing gland with water crossover from engines Shaft log bonded into hull Cast bronze struts of Vee design Jastram power steering with dual, engine-driven pumps, and (4) steering stations: pilothouse, flybridge, and port & starboard wing stations Stations include RAI indicator, horn, start/stop buttons, and thruster controls All bronze thru hulls to be bonded with #8 or heavier wire and connected to transom zincs and shaft wipers Zinc Anodes are installed on hull at transom and secured on brass studs and tied to the bonding system Included are shaft and strut zincs Stabilization while underway is provided by a pair of fins located approximately amidships and powered hydraulically by an engine driven hydraulic pump Control is by modern digital system located in the pilothouse

Sound Attenuation

Westport Shipyard has developed a whole sound reduction plan that incorporates installation details and insulation schedules that significantly reduce noise & vibrations throughout the vessel The sound package consists of barriers and absorptive insulation in the engine room (material –Soundown) In addition, equipment, piping, and wiring is solidly mounted to isolate and prevent vibrations that transmit noise Pacific Coast Marine noise attenuating/watertight door Various isolation mounts per equipment manufacturer specifications Noise transmission sound dampening between spaces in the accommodation areas is achieved using sound tight construction This system utilizes acoustic fill (Whisper Walls 3M Thinsulate) in double wall bulkheads and isolation mounting (material – Sylomer) of equipment and piping that may transmit vibration

Diesel Fuel System

Approximately 5,500 gallons (US) of diesel in one tank separated into three compartments with a transfer system including a pump, meter, and distribution manifold All diesel consumers draw from the center compartment (Day Tank) During normal operations, fuel is transferred to the day tank via the transfer pump Fueling process is via either of two deck fill locations amidships, port or starboard side Tank is vented to atmosphere on both sides of the vessel Tank level monitoring is via electronic sensor and displays with high/ low-level alarms Tank is all aluminum, welded construction with internal baffles and three divided areas Inspection access ports are manufactured by Freeman Marine Fuel transfer pump will have a flow meter and timer One dual Sea Pro 8 with isolation valve for each main and one Dual Racor filter 75/500 for each generator Sight tubes fuel gauges located in engine room and IntelliSea monitoring ¼" 5086 Alloy aluminum separated fuel tank with dual fills and standard vents, IntelliSea monitoring and sight tube level indicators Approximate capacity: 5500 gallons **Gasoline Fuel System**

The gasoline system consists of a tank, an air diaphragm pump, and hose with nozzle to transfer the gas. The hose, nozzle, and pump, along with the tank fill are located under the hatch centered on the Swim Step deck Stainless Steel tank, 100 gallon Air diaphragm pump

Lube Oil System

The vessels main engines and generators can be serviced utilizing and onboard lube oil change system. A new/used oil tank is fitted under sole on centerline in the Crew Mess. The new oil tank can be filled directly into tank starboard side. The quick connect hose and portable pump are used to transfer lube oil to/from locations Tanks: Located under sole in the Crew Mess area. Lube Oil. New: Alum., 60 gal. Lube Oil – Used: Alum, 60 gal. Portable pump and stowed below the starboard generator Stainless quick connector fittings **Bilge System**

System consists of five remote mounted bilge float switches and IntelliSea alarms on all float switches Fixed bilge pump system includes two electric 230V AC pumps with 1 ½" PVC lines to each major compartment with check valves, strainers, and priming system **Freshwater System**

The system is comprised of multiple divided and baffled freshwater tanks, two AC supply pumps, suction supply, service and distribution manifolds, two reverse osmosis watermakers, and associated valves, filters, expansion tanks, regulators and gauges. Freshwater wash downs with quick connects are located on all decks Two 220V AC pumps and one 24V DC backup pressure pump with tank Water tanks are aluminum with interior epoxy coating and an approximate tank capacity of 1,000 gallons IntelliSea monitoring system and sight tube level indicators (2) Sea Recovery SRC AWC 14002 watermakers (2,800 gallons per day total) (5) Micron sediment filters with UV sterilization light (2) Dual element water heaters, fast recovery - (1) 80 gallon and (1) 38 gallon **Waste Water System**

Black and Gray water is routed to an FRP Tank. A certified Marine Sanitation Device (MSD) is installed for treatment of all wastewater Discharge is via MSD or direct overboard via diaphragm pump Dockside connection is located just aft of the starboard fuel fill High capacity pump solids handling AC diaphragm type Headhunter MSD treatment with PLC touch screen and AutoClor treats black and gray water Holding tank is composite with an inspection hatch Tank is

electronically monitored and has an approximate capacity of 600 gallons Headhunter MSD treatment with PLC touch screen and AutoChlor treats black and grey water (2) Approximately 15-gallon gray water sumps with boxes fitted with screens; also, supply and discharge lines for all showers Forward & aft sump tank will have sump pumps and 24V DC backup pumps

Air Condition System

The interior of the vessel is kept at a constant temperature through the use of a seawater-cooled/heated reverse cycle, treated water HVAC system. The capacity is 24 tons and is distributed throughout the vessel via individual room air handlers of various sizes and BTU ratings. There is one (HVAC) Keypad the two air handlers in the Master Stateroom, one for the two air handlers in the Galley, and two for the four air handlers that serve the Salon; all other air handlers are each controlled by a separate keypad. All interior areas air conditioned by at least one HVAC unit. Master & Guest Staterooms have chill chaser units. (8) Exhaust fans, two in the master head and one in the other heads (4) Compressors and heating pump, independent seawater intake 230V1PH60Hz, 24-ton chillers 230V1PH60Hz, Air handlers various BTU as required by volume being treated, utilizing variable speed hi static DC blowers Make Up Air: For cycling air through the vessel interior **Compressed Air System**

The vessel has a compressed air system for powering the ship's whistle and gasoline dispensing pump, as well as for use in machinery spaces for air powered tools SpeedAire Compressor 3hp with 20-gallon tank 18" Air Hose self-coiling with quick disconnect

Mooring System

(6) Dock lines, 60"x 1", braided nylon with 36" eye splice (8) Bitts, 1"7" stainless steel (6) Stainless hawse eyes forward, two stainless steel hawse eyes at swim grid, plus two additional cleats at stern for shore boat tie-off (4) Fenders F7 series (15" x 41") (4) Nautica International (5" x 1"4") white fenders with nylon rope, covers, and pump (8) Fender cleats (four per side) with stainless steel rub rail (4) Fender hangers Dual Poole style 300 lb. polished stainless steel anchors; (1) 250", (1) 350" x 5/8" chain for two anchors, 5/8" chain rollers, stoppers, and devil's claws (2) VWC 4500# Polished stainless steel anchor plates Maxwell, hydraulic winches with band brakes Anchor chain washdown system (2) Maxwell 3500# 24V DC capstans

Vessel Control System

InteliSea Model IS1 control system

Fixed panels are located at convenient locations providing operational information and alarm conditions with a programming panel located in the Pilothouse InteliSea offers a vessel-wide WiFi network, accessible with password for laptop display of monitored information Items on safety control panel as follows: (14) combo smoke/heat sensors: Combo sensors are located in all staterooms, interior public and crew areas (1) Heat sensor in the engine room (4) CO-alarms in crew staterooms, Capt. stateroom, and crew galley/lounge Security system for aft door, crew door, Salon door, port and starboard doors, flybridge hatch, and VIP hatch monitored for unauthorized entry Tank monitoring: 3 fuel tanks, 2 fresh water tanks, both gray water sumps and

black water tank (Gray water boxes have alarms on DC pumps, black water tank alarmed at 75% and 98% full levels) Monitoring of AC supply switching from all available sources with Volts, Line 1/Line 2 Amps & KW monitored for each generator All five bilge switches monitored for water detection

Electrical Equipment

All AGM cell type batteries:

(2) banks of two 8D, 225amp batteries, wired in series for starting main engines (total of four) (2) 8D, 225amp batteries, one for each generator starting (1) 24VDC battery bank (two 8D, 225amp batteries, wired in series) for ship's service and one 12VDC 2 8D 225amp battery bank for electronics Battery Chargers one 95amp 24VDC for ship's service bank, one 45amp 24VDC for main engine bank and one 20amp 24VDC for generator bank Main distribution panel located in crew area with all necessary circuit breakers and transfer switches to provide proper operation of AC and DC circuits Distribution Panels: Located throughout the vessel, distribution panels have engraved faceplates Shore Power (2) 100 amp 240v single phase/208v three phase shore feeds with Glendinning Cablemaster cord reels at port bustle (includes two 100 ft cables) TV and phone outlet located at port bustle with one 100' TV/phone cord Asea Shore Power Converter (2) 36Kva 60 Hz, single or three phase input service with a 4070 Hz frequency and a voltage between 170-20VAC The converters will autoconfigure for the applied power form Frequency Converter (1) 10Kva 50 Hz frequency converter for dedicated 50 Hz outlets Power Conditioner (1) 10Kva 60 Hz frequency conditioner for audio/video power use & backup power supply Lightning protection with hull Dyna plate and lightning antenna LED recessed light fixtures Vimar and Leviton general lighting receptacle and switching throughout All staterooms have 110V reading lights and 110V receptacles for table lamps Indirect lighting 24V DC and 110VAC rope lighting Shower Lights 24V with white trim (3) 12V Red DC chart lights in pilothouse (one at navigator's area, one at captain's desk, and one at dash flat over stairs to main deck) (1) Carlisle Finch 200 Watt Xenon searchlight located on mast with dual controls Exterior Lighting at the foredeck, house sides, aft deck stair and flybridge overhead lights are all controlled from the pilothouse switch bank The aft deck lights are switched locally Perko navigation lights Crestron lighting controls with switched and dimmed Crestron automation

Navigational Aids

Transas Navisailor NS3000 ECS with 19" LCD display and charts from Seattle, Washington to Ft. Lauderdale, Florida

(2) Furuno radar FAR2117 XBand Radars with 19" LCD display and repeater on Flybridge Furuno depth sounder FCV1200BBP with 15" LCD monitor Furuno GPS GP150D in Pilothouse and Flybridge B & G with HS3000 wind, depth, and speed system with full function display (1) Ritchie Globe Master F600 compass in Pilothouse, one B&G display on flybridge Furuno RD30 Digital Display Depth Sounder with Smart Sensor. (Located in Captain's Quarters) Simrad AP50 autopilot in pilothouse and on flybridge AIS

Communications

Two Icom M604 VHF radios in Pilothouse and one command mic on Flybridge

Icom M802 w/ automatic antenna tuner GPIRB Northern Airborne Technology NAS1520 (1)
Hailer horn, integrated with VHF radios

Satellite Communications

Internet connectivity thru the satellite telephone with a broadband router attached and (2) wireless remote access points (one forward and one aft) for remote connection throughout the boat

XM Weather information Satellite Weather running on ships computer with OCENS WeatherNet and GRIB Explorer weather monitoring software connected via FB250 Satcom

Telephone System

Panasonic telephone system (PBX), (14) station digital phone system

All stations have speakerphones for intercom and paging Phone system is connected to Satcom, Cell Phone and Shore Phone for voice lines throughout Cordless phone units (five total) are located in the Master Stateroom (1), Pilothouse (1), Galley (1), and Salon (2) and (one intended for Aft Deck) The Pilothouse has a fix-mounted phone with an LCD display A single shore connection is provided at the port bustle t with a 100 ft. combo Telephone / CATV shore cord Cradlepoint 4G/LTE VOIP KVH TracPhone V7 Mini-Vsat Fleet Broadband FB250

Audio/Video Equipment

Central Equipment

Kaleidescape System

(1) Movie server and (5) movie players: Includes the Movie and Music License and a Lifetime Music Guide and SoftwareUpdate Service Kaleidescape Movie/Music Server Kaleidescape Fourzone Music Player Crestron XM and FM tuner

Aft Deck

TV 42" Exterior LCD Satellite Receiver

Two pairs of speakers Crestron 2-Way Touch Panel Control

Main Salon

TV 47" LCD Surround Sound Receiver Surround Sound Speaker System with Powered Subwoofer iPod Docking Station Satellite Receiver Blu Ray DVD/CD Player Crestron 2-Way Touch Panel Control

Master Stateroom

TV 42" LCD Surround Sound Receiver Surround Sound Speaker System with Powered Subwoofer iPod Docking Station Satellite Receiver Blu Ray, DVD/CD Player Crestron 2-Way Touch Panel Control

Guest Stateroom - Port

TV 26" LCD Satellite Receiver Blu Ray, DVD/CD Player (1) Pair of speakers iPod Docking Station Crestron 2-Way Touch Panel Control

Guest Stateroom - Starboard

TV 26" LCD Satellite Receiver Blu Ray, DVD/CD Player iPod Docking Station (1) Pair of speakers Crestron 2-Way Touch Panel Control

VIP Stateroom

TV 26" LCD Satellite Receiver Blu Ray, DVD/CD Player (1) Pair of speakers iPod Docking Station Crestron 2-Way Touch Panel Control

Captain's Cabin

TV 32" LCD Satellite Receiver Pair of speakers Handheld Crestron Remote

Crew Lounge

TV 22" LCD Satellite Receiver DVD/CD Player iPod Docking Station (2) Pair of speakers **Crew Quarters (2 each)**

TV 22" LCD DVD/CD Player

Camera System

A comprehensive CCTV system – controlled with Elbex, 12V DC with hi-resolution color – offers security and assists in navigation during low visibility situations is included with this vessel Full pan zoom tilt camera on the aft deck, fixed port and starboard cameras on side decks assist in maintaining surveillance of entry points. In the Engine room, a full pan zoom tilt camera helps the captain monitor mechanical operation while piloting the vessel. Located on the mast is an infrared camera – FLIR M for night time navigation and viewing. Video feeds from all cameras can be programmed for viewing on any television via the Crestron remote A/V controllers.

Safety & Fire Protection Safety Equipment

(2) 8-man Zodiac life rafts (13) Coast Guard approved adult life preservers with water lights (6) Coast Guard approved child life preservers with water lights (2) 24" diameter ring buoys secured on exterior of vessel Flare kit included Perko 179 ship's bell per Coast Guard regulations, stored in Doghouse Safety steps recessed into transom Dry chemical type fire extinguishers to be

installed in suitable locations (3) 10lb., (5) 5 lb., and (5) 2½ lb. Northern Airborne Technology NAS1520 GPIRB Medical Kit - Zee #155 with soft case

Detailed Description

Crisp, classic styling balanced with timeless traditional appeal keynotes a vessel of extraordinary performance, one that has been built to uncompromising standards of structural integrity and quality. Welcome to Jopaju, a 112' Westport yacht designed to flawless precision.

Built in 2012, Jopaju embodies the sleek styling that is the Westport signature. Featuring walkaround side decks, Jopaju facilitates the ultimate in relaxation with a spacious flybridge boasting a full bar and ample seating. A large sunpad and a Jacuzzi tub can be found steps down, while further dining and relaxation areas continue on the bow and aft deck

With 360-degree views throughout, you'll always have the best seat in the house. The combination of spacious staterooms and expansive windows blur the boundaries between indoors and out. So, whether you're entertaining guests on the aft deck or retiring to the main salon for a nightcap, every new day brings a new spectacular view.

Featuring a classic yet timeless décor and modern amenities, Jopaju is designed to facilitate a relaxing, sophisticated charter. This Westport 112 sleeps up to 8 guests in 4 luxurious staterooms, including a master suite and 3 double cabins.

Boat Name

Jopaju

Specs

Flag of Registry: United States

Dimensions

LOA: 112 ft 0 in

Beam: 23ft 9 in

Maximum Draft: 5 ft 6 in

Dry Weight: 258000 lbs

Engines

Total Power: 4000 HP

Engine 1:

Brand: MTU

Engine Model: 16v2000

Engine/Fuel Type: Diesel

Location: Port

Engine Hours: 1718 HR

Engine Power: 2000 HP

Engine 2:

Brand: MTU

Engine Model: 16v2000

Engine/Fuel Type: Diesel

Location: Starboard

Engine Hours: 1718 HR

Engine Power: 2000 HP

Cruising Speed: 22 knots

Maximum Speed: 26 knots

Accommodations:

Number of cabins: 4

Number of heads: 5

Full Specifications

Walkthrough JOPAJU is a single owner 112' Westport which offers a standard layout with full-beam master and (2) guest staterooms with en-suite heads on the lower deck plus an additional VIP stateroom forward. The condition of the interior is like new featuring the raised Crotch Mahogany wood finish.

****Key Features:**

Nautical Structures hydraulic passerelle Naiad At-Rest (zero-speed) stabilizers Carbon fiber 8-step Tide-Ride boarding ladder

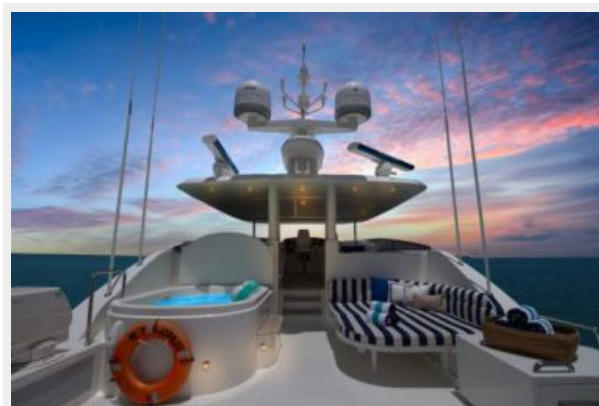
Исключения

При продаже яхты исключаются личные вещи владельца.

Отказ от ответственности

Компания предоставляет описание судна или яхты добросовестно, но не может гарантировать точность этой информации, а также не ручается за техническое состояние. Покупатель должен проинструктировать своих агентов или оценщиков исследовать представленную информацию более подробно, по собственному желанию. Продажа судна или яхты, изменение цены или снятие с продажи будет происходить без предварительного уведомления.

ФОТОГРАФИИ





Dining Room



Galley



Galley



Steps to Master



Master Bath



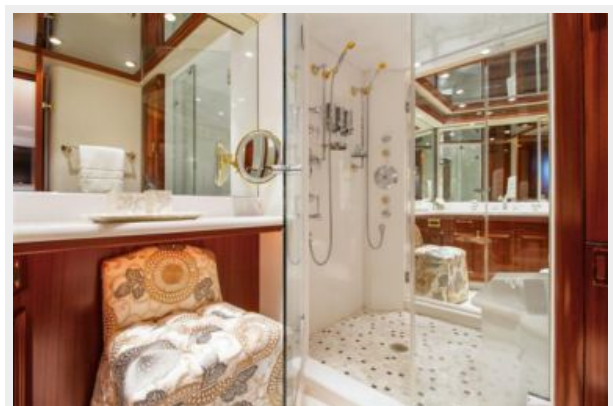
Master



Master



Master Bath



Guest



Guest



Guest Head



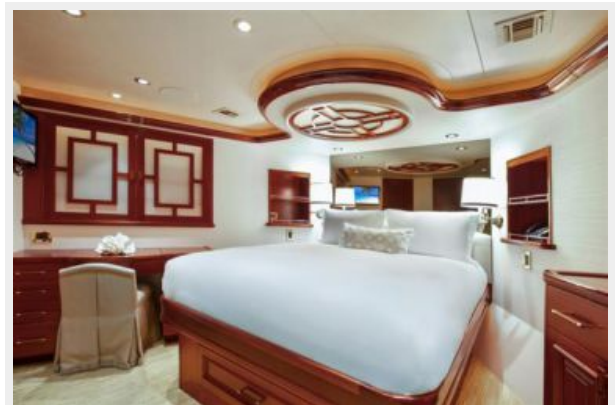
Guest



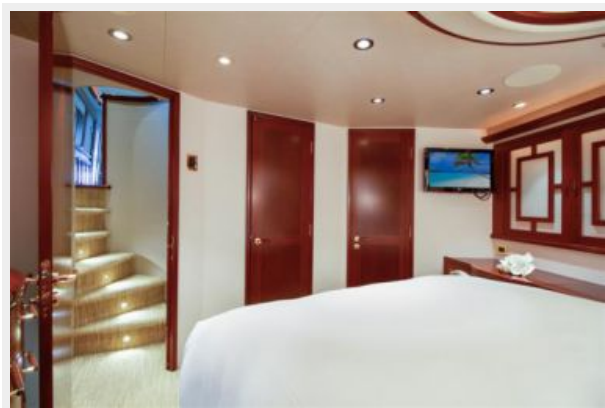
Guest



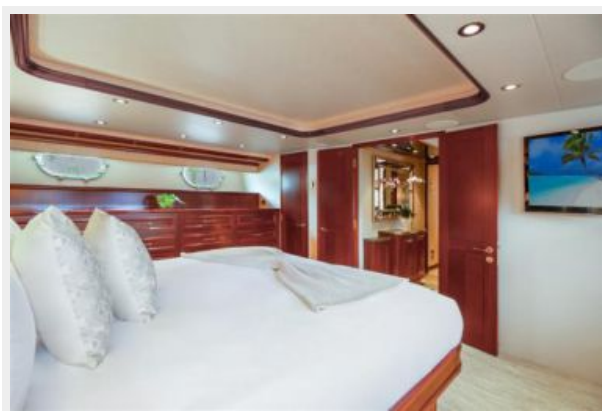
VIP



VIP



VIP



КОНТАКТЫ

Андрей Шестаков (Andrey Shestakov) – ведущий яхтенный брокер отдела продаж яхт и судов компании Shestakov Yacht Sales Inc. Официальный представитель Shestakov Yacht Sales Inc. для русскоговорящих клиентов в центральном офисе компании в Майами/Форт Лодердейл/Флорида/США.

Контактная информация

Email: andrey@shestakovyachtsales.com

Web: shestakovyachtsales.com

Телефоны

Краснодарский край: **+7(918)465-66-44**

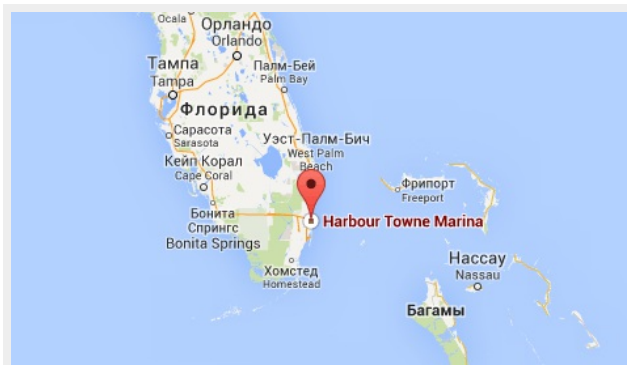
США, Майами, Флорида: **+1(954)274-4435**

Время работы

Понедельник – Суббота: **9:00 - 21:00**
EDT

Воскресенье: **Закрето**

Адрес



Harbour Towne Marina, 850 NE 3rd St,
STE 213, Dania, FL 33004