

CHAPARRAL 327 SSX — CHAPARRAL



Builder: CHAPARRAL

Year Built: 2013

Model: Cruiser

Price: PRICE ON APPLICATION

Location: United States

LOA: 32' 6" (9.91m)

Beam: 10' 0" (3.05m)

Min Draft: 1' 11" (0.58m)

Max Draft: 3' 3" (0.99m)

Our experienced yacht broker, Andrey Shestakov, will help you choose and buy a yacht that best suits your needs **Chaparral 327 SSX — CHAPARRAL** from our catalogue. Presently, at Shestakov Yacht Sales Inc., we have a wide variety of yachts available on our sale's list. We also work in close contact with all the big yacht manufacturers from all over the world.

If you would like to buy a yacht **Chaparral 327 SSX — CHAPARRAL** or would like help answering any questions concerning purchasing, selling or chartering a yacht, please call **+1(954)274-4435**

TABLE OF CONTENTS

TABLE OF CONTENTS	2
SPECIFICATIONS	3
Overview	3
Basic Information	3
Dimensions	3
Speed, Capacities and Weight	4
Accommodations	4
Hull and Deck Information	4
Engine Information	4
DETAILED INFORMATION	5
Overview	5
Factory Installed Options	5
Standard Features	6
Color	9
Disclaimer	9
Exclusions	9
Disclaimer	9
PHOTOS	10
CONTACTS	12
Contact details	12
Telephones	12
Office hours	12
Address	12

SPECIFICATIONS

Overview

***** Preliminary Listing *** 2013 Chaparral 327 SSX MerCruiser 350 MAG w/Axius No Bottom Paint - Well Maintained Actual Photos Coming Soon! - Your Trade Welcome -**

It's part family bowrider, part performance-minded sport boat, part overnight cruiser but most importantly the incredible 327 SSX is a Chaparral through and through. With its go-anywhere 22 degree deep-V hull, standard fiberglass hard top, striking liquid-silver interior, dual forward facing helm seats and wildly practical full beam cabin, the 327 SSX is a game changer.

This Chaparral 327 SSX has all of the most wanted options, including;

- Air Conditioning
- Generator
- Electronics
- Vacuflush Head
- Full Canvas

This 327SSX is a dealer trade. See it at our Fort Lauderdale store.

Basic Information

Category: Cruiser

Model Year: 2013

Year Built: 2013

Country: United States

Dimensions

LOA: 32' 6" (9.91m)

Beam: 10' 0" (3.05m)

Min Draft: 1' 11" (0.58m)

Max Draft: 3' 3" (0.99m)

Clearance: 9' 10" (3.00m)

Speed, Capacities and Weight

Displacement: 10200 Pounds

Water Capacity: 25 Gallons

Holding Tank: 15 Gallons

Fuel Capacity: 146 Gallons

Accommodations

Total Heads: 1

Hull and Deck Information

Hull Material: Fiberglass

Engine Information

Manufacturer: Mercruiser

Model: 350 MAG DTS Axius

Engine Type: I/O

Fuel Type: Gas/Petrol

DETAILED INFORMATION

Overview

***** Preliminary Listing *** 2013 Chaparral 327 SSX MerCruiser 350 MAG w/Axius No Bottom Paint - Well Maintained Actual Photos Coming Soon! - Your Trade Welcome -**

It's part family bowrider, part performance-minded sport boat, part overnight cruiser but most importantly the incredible 327 SSX is a Chaparral through and through. With its go-anywhere 22 degree deep-V hull, standard fiberglass hard top, striking liquid-silver interior, dual forward facing helm seats and wildly practical full beam cabin, the 327 SSX is a game changer.

This Chaparral 327 SSX has all of the most wanted options, including;

- Air Conditioning
- Generator
- Electronics
- Vacuflush Head
- Full Canvas

This 327SSX is a dealer trade. See it at our Fort Lauderdale store.

Factory Installed Options

- Air Conditioning
- Cabin TV
- Garmin 5208 w/G2 GPS Chip
- Stainless Steel Anchor
- Dockside Water Inlet
- Water Heater
- Windlass
- VacuFlush Head w/Macerator
- Microwave
- Opening Port Lights
- Liquid Silver Stripe
- Wet Bar
- Triple 6 LED Underwater Lights
- Grill
- Stainless Refrigerator
- Generator 3.0 kW
- Remote Spot Light
- Canvas Package
- VHF Radio

Standard Features

CABIN

- Cabin Overhead and Indirect Lighting - 12 volt
- Cabin Portlights - Fixed (3)
- Carbon Monoxide Detector
- Color Coordinated Cabin Fabrics w/ Scotchgard Protectant
- Gunnel Storage Cabinet
- Fiberglass Floor and Ceiling Liner
- Hand Stitched Diamond Pattern Upholstery
- Hanging Locker - Cedar Lined with Light
- Lockable Fiberglass Cabin Entryway Door with Glovebox
- L-Shaped Couch - Converts to Full Berth
- Patent Pending Design allows for Full Beam Cabin Layout
- Premium Sound System: Sirius Satellite Ready, AM/FM CD Player, USB Plug, Remote Control Displays (3), Cockpit Speakers (8), Cabin Speakers (2) and Sub-Woofer Powered by 1 Amp
- Sirius Satellite Stereo w/Antenna
- Wood Flooring with Hardwood Wood Steps

GALLEY

- Base Cabinet with Storage
- Color Coordinated Fiberglass Countertop
- GFCi 110VAC Receptacle
- Main Distribution VAC/VDC Electrical Panels
- Trash Receptacle

HEAD

- Enclosed Fiberglass Head/Shower
- Head Door with Shower Curtain
- Lighting - 12VDC
- Mirrored Upper Storage Cabinet
- Opening Frosted Portlight with Screen
- Power Vent
- Stainless Steel Handrail
- Vacuflush Head with Holding Tank, China Bowl and Level Indicator
- Vanity Cabinet - Lower
- Vanity Solid Surface Countertop with Stainless Steel Sink, Faucet/Pull-Out Shower Wand

COCKPIT

- Bow Ice Chest (Insulated) with Overboard Drain
- Bow Floor Storage with Fiberglass Tub

- Bow Port Lounge Cushion with Storage Underneath
- Carry On Cooler with Dedicated Storage - 36 Quart
- Cockpit Drainage System (CDS) with Self Bailing Fiberglass Liner
- Cockpit LED Lighting
- Cockpit Upholstery Color Packages Include: Black, Blue, Red or Yellow
- Custom Molded Fiberglass Side Panels Coated in Liquid Silver for the Bow and at the Dashes (4)
- Diamond Pattern Non-Skid
- Double Helm Seat with Exclusive Seat Lever - Forward and Aft Adjustment with Logo Badging
- Double Companion Seat - Port Fixed with logo Badging
- DC Power Plug
- "Dura-Life Max" Premium Expanded Vinyl Cockpit Upholstery
- Electrically Actuated Engine Room Hatch
- Hand-Stitched Diamond Pattern Upholstery
- L-Shaped Aft Lounge Seating with Storage Below
- Pressure Water System
- Power-Slide Aft Seat with Lounge Position
- Cockpit Floor Storage - Floor Garage 70 cu.ft.
- Stainless Steel Bow Rails
- Stainless Steel Cupholders (13)
- Stainless Steel Speaker Covers
- Stainless Steel Transom Shower
- Starboard Cockpit Jump Seat with Storage Below
- StarLite Seat Cushion Bases with Flow Foam
- Stereo Remotes - Located in the Bow, Helm and Transom
- Table with Side Mount Bases in the Cockpit & Bow
- Transom Gate - Aluminum
- Walk-Thru Bow with Close Off Door - Aluminum
- Custom Stainless Steel Wrap-Around Windshield with Integral Supports

DASH

- Accessory Panels with Illuminated Switches, Indicator Lights
- Aluminum Dash Panels
- Binnacle Mount Throttle and Shifter Control
- Central Grounding Bars
- Compass
- Custom Molded Dash Coated in Liquid Silver with Hand Stitched Upholstery Visor
- DC Power Plug
- Digital Instrumentation with Glass Lenses (Fog Resistant), Brushed Aluminum Faces and Stainless Steel Bezels
- Instrument Dimmer Switch
- Leather Wrapped Steering Wheel with Polished Spokes and Self Centering Logo

- Loom and Panduit Wrapped Wiring
- Power Steering
- Tilt Steering Helm
- Water Resistant Breakers Located at the Dash in a Custom Enclosure
- Windshield Wiper - Two Speed

UTILITY

- 50 Amp Battery Converter/Charger
- 100% Perma Panel Marine Coring (Lifetime Warranty)
- Aluminum Fuel Tanks (2) - 75 Gallons Each
- Anchor Hull Guard - Stainless Steel
- Bilge Pump - Automatic (Forward and Aft)
- Brass Threaded Garboard Drain Plug
- Counter Rotating Props
- Custom Stainless Steel Hull Accent Plates
- Custom Molded Bilge Intake Vents with Stainless Steel grills and LED lighting
- Electric Horn
- Electrical Connectors Triple O-Ring Sealed and Watertight
- Extended V-Plane Hull
- Fiberglass Hardtop with Exclusive Foredeck Walk-Thru Hatch, Stainless Steel Grab Hand Rails and Overhead LED Lighting
- Fire Extinguishing System - Automatic/Manual
- Galvanic Isolator
- Heavy Duty Bilge Blowers
- Integrated Polished Stainless Steel Achor Davit with Rope Locker
- Jump Start System
- Kevlar Re-Inforced Hull Laminate
- LED Lighting in Engine Room and Cockpit Floor Storage
- Lifetime Limited Hull Warranty
- Navigation Lights - LED
- NMMA Certified
- Premium Hydropel Resin
- PVC Rubrail with Stainless Steel Insert
- Quad Battery Setup with Automatic Switches
- Shore Power with 50 ft. Cord
- Stainless Steel Pull Up Cleats (8)
- Stainless Steel Hardware, Including Electro Polished Thru-Hull Fittings, Large Bow and Stern Eyes, and Flush Pull Latches
- Stainless Steel, Three-Step, Hideaway Swim Platform Ladder
- Trim Tabs- Electric with Indicator Lights

ACTIVITY

- Integral Swim Platform

CANVAS

- Color Coordinated Canvas Package with Hardtop Includes: Windscreen, Side Curtains and Storage Bag (Sunbrella)

Color

- White Hull, Deck & Bottom
- Blue Hull Band
- Interior - White

Disclaimer

The Company offers the details of this vessel in good faith but cannot guarantee or warrant the accuracy of this information nor warrant the condition of the vessel. A buyer should instruct his agents, or his surveyors, to investigate such details as the buyer desires validated. This vessel is offered subject to prior sale, price change, or withdrawal without notice.

Exclusions

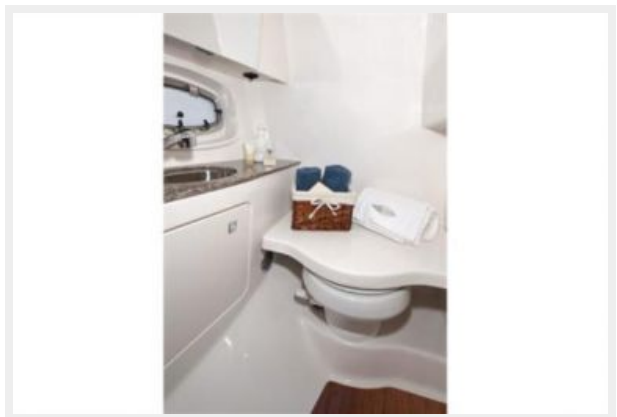
Owner's personal belongings.

Disclaimer

The Company offers the details of this vessel or yacht in good faith but cannot guarantee or warrant the accuracy of this information nor warrant the condition of the vessel. A buyer should instruct his representatives, agents, or his surveyors, to investigate such details as the buyer desires validated. This vessel or yacht is offered subject to prior sale, price change, or withdrawal without notice.

PHOTOS





CONTACTS

Andrey Shestakov, leading yacht broker of the sales department of Shestakov Yacht Sales Inc. Shestakov Yacht Sales Inc., the official representative of the Miami/Fort Lauderdale FL headquarters.

Contact details

Email: andrey@shestakovyachtsales.com

Web: shestakovyachtsales.com/en/

Telephones

USA: +1(954)274-4435

Office hours

Monday – Saturday: **9:00 - 21:00** EDT

Sunday: **closed**

Address



Harbour Towne Marina, 850 NE 3rd St,
STE 213, Dania, FL 33004