

ESPRIT — CATALINA



Builder: CATALINA

Year Built: 1995

Model: Cruising/Racing Sailboat

Price: PRICE ON APPLICATION

Location: United States

LOA: 32' 0" (9.75m)

Beam: 11' 9" (3.58m)

Min Draft: 4' 3" (1.30m)

Max Draft: 4' 3" (1.30m)

Our experienced yacht broker, Andrey Shestakov, will help you choose and buy a yacht that best suits your needs **Esprit — CATALINA** from our catalogue. Presently, at Shestakov Yacht Sales Inc., we have a wide variety of yachts available on our sale's list. We also work in close contact with all the big yacht manufacturers from all over the world.

If you would like to buy a yacht **Esprit — CATALINA** or would like help answering any questions concerning purchasing, selling or chartering a yacht, please call **+1(954)274-4435**

TABLE OF CONTENTS

TABLE OF CONTENTS	2
SPECIFICATIONS	6
Overview	6
Basic Information	7
Dimensions	7
Speed, Capacities and Weight	7
Accommodations	7
Hull and Deck Information	7
Engine Information	8
DETAILED INFORMATION	9
Features	9
Exclusions	11
Disclaimer	11
PHOTOS	12
On the water	12
Leaving the dock	12
On the water	12
At the dock	12
Port side at the dock	13
Starboard side at the dock	13
Sails in Good Condition	13
Looking forward from helm	13
Companionway	13
Come on in	13
Large cockpit !!	14
Cockpit with Closed Cell Foam Cushions	14
Helm	14
Electronics at the helm	14

Helm	14
Looking aft to cockpit from Salon	14
Ready for dinner....	15
Bow	15
Clean anchor locker with windlass	15
Plenty of space below	15
Looking forward, privacy panels open	15
Spacious Main Salon	15
Looking below from companionway	16
Dinner time	16
Starboard Side below	16
Looking aft in main salon	16
Nav Station	16
Standard Horizon VHF	16
Looking aft towards galley	17
Navigation Station	17
Looking forward, privacy panels closed	17
Ready for overnight guests....	17
Storage under forward berth	17
Guest berth	17
Large Galley !	18
Dry storage locker in galley	18
Galley	18
Galley with stove/oven and double sink	18
Storage in galley	18
Large refrigerator with freezer	18
Extra insulation for refrigerator	19
More Galley Storage	19
Large Head	19

Aft head	19
Aft Cabin storage and hanging locker	20
Aft Berth	20
Hanging Locker with shelves added	20
Remote panel for Battery Charger	20
Manuals, Charts	21
Oceanair Shades on all ports in mains salon	21
Oceanair Shades on all ports in main salon	21
Oceanair Shades on Hatches in main salon	21
Fan in Main Salon	21
Starboard Side, main salon	21
Doyle Cruising Spinnaker	22
Helm instruments	22
Raymarine Autopilot	22
Engine panel at helm	22
Starboard Lazerette	22
Lifesling	22
Port Lazerette	23
Port side Lazerette	23
Walk thru transom with swim ladder	23
Propane Locker under cockpit seating	23
Hard Boom Vang	23
NEW Bomar Port	23
Solar Vent	24
All lines led aft, Starboard Side	24
Forespar Whisker Pole	24
All lines led aft, Port Side	24
Mid-ship Cleats	24
Lewmar Winches	24

Bilge	25
Bilge	25
Companionway Ladder, engine below	25
Rebuilt Perkins 30 HP Engine	25
Very clean Perkins engine	26
Engine access, aft cabin	26
CLEAN Engine	26
Stuffing box, Muffler	26
NEW Engine Insulation	26
CONTACTS	27
Contact details	27
Telephones	27
Office hours	27
Address	27

SPECIFICATIONS

Overview

"Esprit" is a great example of one of the most popular Catalina models ever! The Catalina 320 is the perfect blend of sailing performance with comfortable accommodations. The cockpit size rivals most 40 footers, plenty of room for family and friends plus a convenient walk-thru transom with swim platform.

Here are just a few of the Key Features on "Esprit":

- **New UK mainsail and cover Dec 2016**
- **New lifelines Nov 2016**
- **New bottom paint Nov 2018**
- **Re-built Perkins 29 HP diesel with 450 hours since re-build**
- **Webasco Air Conditioning**
- **New 2012 Garmin 740 Chart plotter**
- **New 2013 Raymarine Drive unit for Autopilot**
- **Depth, Speed and Wind instruments**
- **Doyle Asymmetrical Cruising Spinnaker with sock**
- **Hull and Topsides just Buffed and Waxed Nov 2018**
- **All ports have been re-bedded and NEW gaskets installed**
- **Complete Service Records since current owner has had "Esprit"**

Check out Full Specs for all the details.....

Here is what Bob Perry, Naval Architect had to say about the Catalina 320 in Sailing magazine:

" I am always amazed at the quality of design and tooling that goes into new Catalina models. They are great boats in a very affordable package. The in-house design group at Catalina, headed by Frank Butler, is able to incorporate everything you could want in a family cruising boat. New Catalina models are examples of extensive research and mock-up work, such as the Catalina 320. The hull shape is fairly moderate in all aspects, although beam has been exaggerated and pushed aft as with a lot of the French boats we see. This is done to increase cockpit area and usable interior space. I'm not wild about fat boats. But note the size and location of the double berth aft; there is the advantage of beam. There are two keels available with either a 4-foot-3-inch or 6-foot draft. The D/L is 230 and the ballast-to-displacement ratio is 35 percent, typical for a boat like this....."

Basic Information

Category: Cruising/Racing Sailboat

Model Year: 1995

Year Built: 1995

Country: United States

Dimensions

LOA: 32' 0" (9.75m)

LWL: 28' 0" (8.53m)

Beam: 11' 9" (3.58m)

Min Draft: 4' 3" (1.30m)

Max Draft: 4' 3" (1.30m)

Clearance: 47' 6" (14.48m)

Speed, Capacities and Weight

Displacement: 11700 Pounds

Water Capacity: 50 Gallons

Holding Tank: 20 Gallons

Fuel Capacity: 20 Gallons

Accommodations

Total Cabins: 2

Total Berths: 3

Total Heads: 1

Hull and Deck Information

Hull Material: Fiberglass

Hull Configuration: Monohull

Hull Finish: Plastic

Hull Designer: Gerry Douglas

Engine Information

Engines: 1

Manufacturer: Perkins

Model: M30

Engine Type: Inboard

Fuel Type: Diesel

DETAILED INFORMATION

Features

Accommodations

The V-berth sleeps 2 with fantastic storage utilizing shelf space and three lockers. The salon has a dinette and curved settee to starboard which converts to a double berth. The settee to port also converts to a single berth. The salon upholstery is in great condition and the spacious aft cabin boasts a large queen bed with lots of storage. The entire boat is light, airy and well-ventilated. The unique interior is beautifully finished in a rich combination of teak and hardwoods that complement the beige textured fiberglass overhead and hull liner. The head is located to starboard at the companionway and has a vanity stainless steel sink with shower head, hot/cold pressure water, mirrors and lots of storage. The head, like the V-berth and aft cabin, has its own hardwood door for privacy.

- Oceanair Shades/Screens on all hatches in the main salon and forward cabin
- Zocor Peek a Boo shades on fixed ports in the main salon
- **NEW 2013** Bomar Salon Hatch
- All opening ports have been recently serviced. **NO** Leaks!

Galley

The extra clean galley is aft to port and features everything needed to keep the chef happy. Create an elegant meal or just a quick snack with ease in this fantastic cooking space!!

The wrap-around galley is designed for gourmet convenience with details like custom molded counters with integral back-splashes. The galley boasts double stainless steel sinks with hot/cold pressurized water.

- **NEW 2014** Seaward 6 gallon water heater
- Adler-Barbour refrigerator/freezer
- Hillerange Propane double burner stove with oven.

Electronics and navigation

- Garmin 740 Chartplotter
- Instrument pod and Binnacle for instruments at helm
- Raymarine 4000 Drive unit on the Auto Pilot
- Raymarine ST 60 Wind Speed and Direction
- Autohelm ST 50 Speed and Depth
- Stereo with CD and MP3 jack and cockpit speakers
- Standard Horizon VHF with DSC
- Ritchie Compass at helm

Electrical and Mechanical

Electrical

- Xantrex True Charge 20 amp Battery Charger with remote panel
- Two group 29 house batteries
- Separate group 27 engine start battery
- Battery parallel switch
- 110 volt panel with circuit breakers
- 12 volt panel with circuit breakers
- LED lights in main salon
- LED Steaming and masthead anchor lights

Mechanical

- Webasco 12000 BTU Air Conditioning with reverse cycle heat
- Jabsco Head, with **2016** re-build kit
- **All NEW 2015** Sanitation hoses
- Seaward F-600 110 and engine Water Heater
- Accumulator Tank on water system
- Freshwater Pump

Sails and Rigging

- **Full Batten Main from UK 2 only years old**
- **Tides Marine Sail Track for mainsail**
- Hood Furling on 135 Genoa in Good Condition with new Sunbrella cover
- 110 Jib in Good Condition
- Doyle Asymmetrical Cruising Spinnaker with sock
- Garhauer Mainsheet Block and line
- **Most Running Rigging has been replaced over the last three years**
- Manual Back Stay adjuster
- Lewmar Folding 40" Wheel

Engine

- **Perkins M-30 Diesel Engine with approximately 450 hours since complete re-build.**
Very Clean engine compartment

Recent service and improvements

- Engine Cooling pump and impeller
- Engine Hoses
- Engine mounts
- Engine compartment sound proofing

- Max Prop three blade feathering prop

Deck and Hull

- **Deck and Hull just Buffed and Waxed**
- **C-Cushions** closed cell foam Cockpit Cushions
- **NEW 2013** Stern rail back cushions
- All ports have been re-bedded and recently serviced
- **NEW 2014** Bomar Deck hatch in Salon
- Danforth Anchor with Chain and Rode
- Delta Anchor with Chain and Rode
- Maxwell Electric Windlass
- Wing Keel with 4 foot 4 inch draft
- Walk Through Transom with Swim platform and H&C shower
- Enclosed anchor well
- Teak Cockpit Table
- Bimini Top and Dodger
- **New Double lifelines with P&S gates**
- Swim platform and H&C shower

Additional Information

Negotiable

Zodiac Cadet 270 w/air floor, 17 in tubes, 8Ft 10in

Honda 2.3 hp, 4 stroke air cooled

Exclusions

Owner's personal belongings.

Disclaimer

The Company offers the details of this vessel or yacht in good faith but cannot guarantee or warrant the accuracy of this information nor warrant the condition of the vessel. A buyer should instruct his representatives, agents, or his surveyors, to investigate such details as the buyer desires validated. This vessel or yacht is offered subject to prior sale, price change, or withdrawal without notice.

PHOTOS

On the water



Leaving the dock



On the water



At the dock



Starboard side at the dock



Port side at the dock



Sails in Good Condition



Looking forward from helm



Companionway



Come on in



Large cockpit !!



Cockpit with Closed Cell Foam Cushions



Electronics at the helm



Helm



Helm



Looking aft to cockpit from Salon



Ready for dinner....



Bow



Clean anchor locker with windlass



Plenty of space below



Spacious Main Salon



Looking forward, privacy panels open



Looking below from companionway



Dinner time



Starboard Side below



Looking aft in main salon



Nav Station



Standard Horizon VHF



Navigation Station



Looking aft towards galley



Looking forward, privacy panels closed



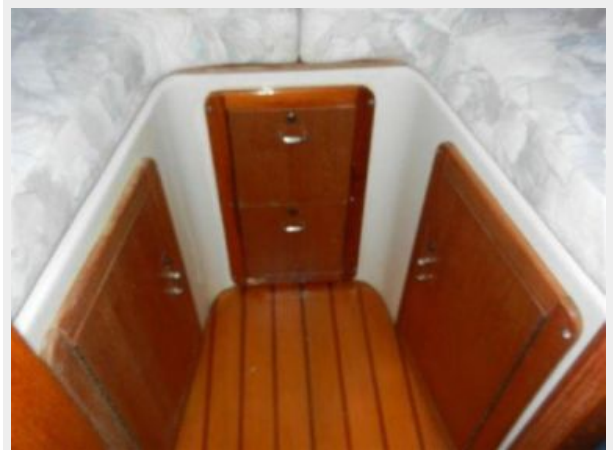
Ready for overnight guests....



Guest berth



Storage under forward berth



Large Galley !



Dry storage locker in galley



Galley



Galley with stove/oven and double sink



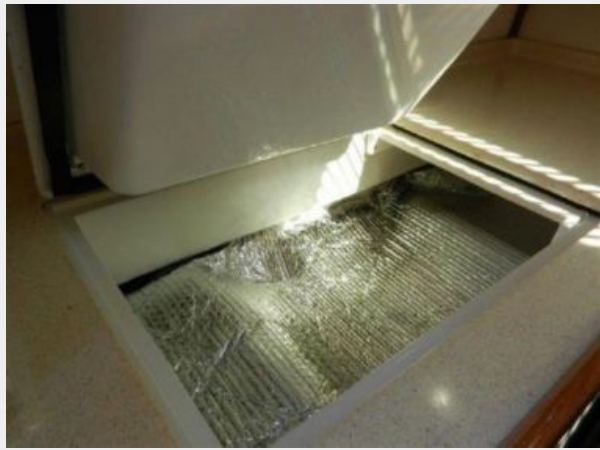
Storage in galley



Large refrigerator with freezer



Extra insulation for refrigerator



More Galley Storage



Large Head

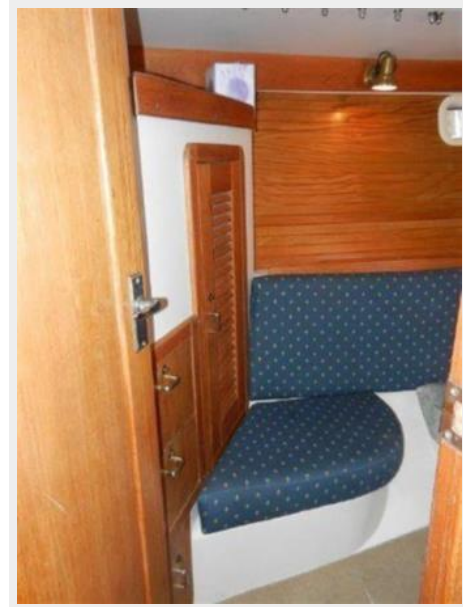


Aft head



Aft Cabin storage and hanging locker

Aft Berth



Hanging Locker with shelves added



Remote panel for Battery Charger



Manuals, Charts



Oceanair Shades on all ports in mains salon



Oceanair Shades on all ports in main salon



Oceanair Shades on Hatches in main salon



Fan in Main Salon



Starboard Side, main salon



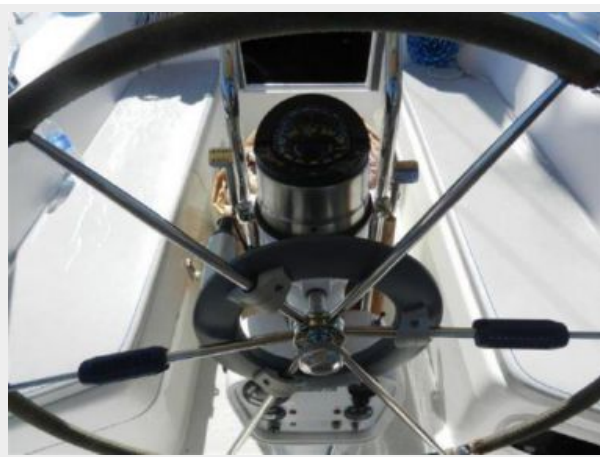
Doyle Cruising Spinnaker



Helm instruments



Raymarine Autopilot



Engine panel at helm



Lifesling



Starboard Lazerette



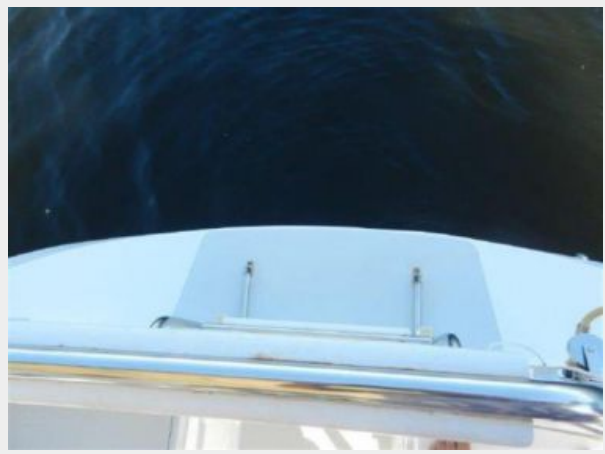
Port Lazerette



Port side Lazerette



Walk thru transom with swim ladder



Propane Locker under cockpit seating



Hard Boom Vang



NEW Bomar Port



Solar Vent



All lines led aft, Starboard Side



All lines led aft, Port Side



Forespar Whisker Pole



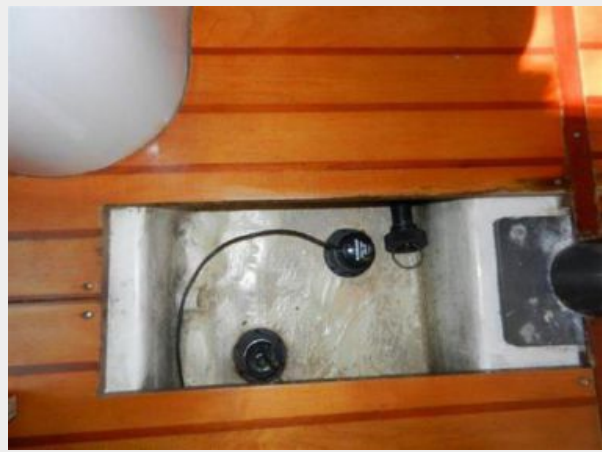
Mid-ship Cleats



Lewmar Winches



Bilge



Bilge



Companionway Ladder, engine below



Rebuilt Perkins 30 HP Engine



Very clean Perkins engine



Engine access, aft cabin



CLEAN Engine



Stuffing box, Muffler



NEW Engine Insulation



CONTACTS

Andrey Shestakov, leading yacht broker of the sales department of Shestakov Yacht Sales Inc. Shestakov Yacht Sales Inc., the official representative of the Miami/Fort Lauderdale FL headquarters.

Contact details

Email: andrey@shestakovyachtsales.com

Web: shestakovyachtsales.com/en/

Telephones

USA: +1(954)274-4435

Office hours

Monday – Saturday: **9:00 - 21:00** EDT

Sunday: **closed**

Address



Harbour Towne Marina, 850 NE 3rd St,
STE 213, Dania, FL 33004