

## ESPRIT — CATALINA



**Судостроитель:** CATALINA

**Год постройки:** 1995

**Модель:** Cruising/Racing Sailboat

**Цена:** ЦЕНА ЯХТЫ ПО ЗАПРОСУ

**Местонахождение:** United States

**Длина общая:** 32' 0" (9.75m)

**Ширина:** 11' 9" (3.58m)

**Мин. осадка:** 4' 3" (1.30m)

**Макс. осадка:** 4' 3" (1.30m)

Купить **Esprit — CATALINA** а также выбрать подходящую вам яхту из нашего каталога яхт вам поможет опытный яхтенный брокер Андрей Шестаков. На сегодняшний день компания **Shestakov Yacht Sales Inc.** имеет большое количество яхт в собственном списке продаж, а также тесно сотрудничает со всеми крупными яхтенными производителями по всему миру.

Для того чтобы купить яхту **Esprit — CATALINA** а также проконсультироваться по любому вопросу связанному с покупкой, продажей, чартером яхт позвоните по телефону **+7(918)465-66-44**.

# ОГЛАВЛЕНИЕ

ОГЛАВЛЕНИЕ	2
ХАРАКТЕРИСТИКИ	6
Обзор	6
Основная информация	7
Размеры	7
Скорость, вместимость и масса	7
Размещение	7
Корпус и палуба	7
Информация о двигателе	8
ПОДРОБНОЕ ОПИСАНИЕ	9
Features	9
Исключения	11
Отказ от ответственности	11
ФОТОГРАФИИ	12
On the water	12
Leaving the dock	12
On the water	12
At the dock	12
Port side at the dock	13
Starboard side at the dock	13
Sails in Good Condition	13
Looking forward from helm	13
Companionway	13
Come on in	13
Large cockpit !!	14
Cockpit with Closed Cell Foam Cushions	14
Helm	14
Electronics at the helm	14

Helm	14
Looking aft to cockpit from Salon	14
Ready for dinner....	15
Bow	15
Clean anchor locker with windlass	15
Plenty of space below	15
Looking forward, privacy panels open	15
Spacious Main Salon	15
Looking below from companionway	16
Dinner time	16
Starboard Side below	16
Looking aft in main salon	16
Nav Station	16
Standard Horizon VHF	16
Looking aft towards galley	17
Navigation Station	17
Looking forward, privacy panels closed	17
Ready for overnight guests....	17
Storage under forward berth	17
Guest berth	17
Large Galley !	18
Dry storage locker in galley	18
Galley	18
Galley with stove/oven and double sink	18
Storage in galley	18
Large refrigerator with freezer	18
Extra insulation for refrigerator	19
More Galley Storage	19
Large Head	19

Aft head	19
Aft Cabin storage and hanging locker	20
Aft Berth	20
Hanging Locker with shelves added	20
Remote panel for Battery Charger	20
Manuals, Charts	21
Oceanair Shades on all ports in mains salon	21
Oceanair Shades on all ports in main salon	21
Oceanair Shades on Hatches in main salon	21
Fan in Main Salon	21
Starboard Side, main salon	21
Doyle Cruising Spinnaker	22
Helm instruments	22
Raymarine Autopilot	22
Engine panel at helm	22
Starboard Lazerette	22
Lifesling	22
Port Lazerette	23
Port side Lazerette	23
Walk thru transom with swim ladder	23
Propane Locker under cockpit seating	23
Hard Boom Vang	23
NEW Bomar Port	23
Solar Vent	24
All lines led aft, Starboard Side	24
Forespar Whisker Pole	24
All lines led aft, Port Side	24
Mid-ship Cleats	24
Lewmar Winches	24

---

Bilge	25
Bilge	25
Companionway Ladder, engine below	25
Rebuilt Perkins 30 HP Engine	25
Very clean Perkins engine	26
Engine access, aft cabin	26
CLEAN Engine	26
Stuffing box, Muffler	26
NEW Engine Insulation	26
<b>КОНТАКТЫ</b>	<b>27</b>
Контактная информация	27
Телефоны	27
Время работы	27
Адрес	27

# ХАРАКТЕРИСТИКИ

## Обзор

"Esprit" is a great example of one of the most popular Catalina models ever! The Catalina 320 is the perfect blend of sailing performance with comfortable accommodations. The cockpit size rivals most 40 footers, plenty of room for family and friends plus a convenient walk-thru transom with swim platform.

**Here are just a few of the Key Features on "Esprit":**

- **New UK mainsail and cover Dec 2016**
- **New lifelines Nov 2016**
- **New bottom paint Nov 2018**
- **Re-built Perkins 29 HP diesel with 450 hours since re-build**
- **Webasco Air Conditioning**
- **New 2012 Garmin 740 Chart plotter**
- **New 2013 Raymarine Drive unit for Autopilot**
- **Depth, Speed and Wind instruments**
- **Doyle Asymmetrical Cruising Spinnaker with sock**
- **Hull and Topsides just Buffed and Waxed Nov 2018**
- **All ports have been re-bedded and NEW gaskets installed**
- **Complete Service Records since current owner has had "Esprit"**

**Check out Full Specs for all the details.....**

**Here is what Bob Perry, Naval Architect had to say about the Catalina 320 in Sailing magazine:**

*" I am always amazed at the quality of design and tooling that goes into new Catalina models. They are great boats in a very affordable package. The in-house design group at Catalina, headed by Frank Butler, is able to incorporate everything you could want in a family cruising boat. New Catalina models are examples of extensive research and mock-up work, such as the Catalina 320. The hull shape is fairly moderate in all aspects, although beam has been exaggerated and pushed aft as with a lot of the French boats we see. This is done to increase cockpit area and usable interior space. I'm not wild about fat boats. But note the size and location of the double berth aft; there is the advantage of beam. There are two keels available with either a 4-foot-3-inch or 6-foot draft. The D/L is 230 and the ballast-to-displacement ratio is 35 percent, typical for a boat like this....."*

## Основная информация

Тип судна: Cruising/Racing Sailboat	Модельный год: 1995
Год постройки: 1995	Страна: United States

## Размеры

Длина общая: 32' 0" (9.75m)	Длина по ватерлинии: 28' 0" (8.53m)
Ширина: 11' 9" (3.58m)	Мин. осадка: 4' 3" (1.30m)
Макс. осадка: 4' 3" (1.30m)	Трапы: 47' 6" (14.48m)

## Скорость, вместимость и масса

Водоизмещение: 11700 Pounds	Вместимость воды: 50 Gallons
Вместимость сточного бака: 20 Gallons	Объем топливного бака: 20 Gallons

## Размещение

Всего кают: 2	Всего коек: 3
Всего ком. состава: 1	

## Корпус и палуба

Материал корпуса: Fiberglass	Комплектация корпуса: Monohull
Отделка корпуса: Plastic	Дизайнер корпуса: Gerry Douglas

## Информация о двигателе

---

**Двигатели:** 1

**Производитель:** Perkins

**Модель:** M30

**Тип двигателя:** Inboard

**Тип топлива:** Diesel



---

# ПОДРОБНОЕ ОПИСАНИЕ

---

## Features

---

### Accommodations

The V-berth sleeps 2 with fantastic storage utilizing shelf space and three lockers. The salon has a dinette and curved settee to starboard which converts to a double berth. The settee to port also converts to a single berth. The salon upholstery is in great condition and the spacious aft cabin boasts a large queen bed with lots of storage. The entire boat is light, airy and well-ventilated. The unique interior is beautifully finished in a rich combination of teak and hardwoods that complement the beige textured fiberglass overhead and hull liner. The head is located to starboard at the companionway and has a vanity stainless steel sink with shower head, hot/cold pressure water, mirrors and lots of storage. The head, like the V-berth and aft cabin, has its own hardwood door for privacy.

- Oceanair Shades/Screens on all hatches in the main salon and forward cabin
- Zocor Peek a Boo shades on fixed ports in the main salon
- **NEW 2013** Bomar Salon Hatch
- All opening ports have been recently serviced. **NO** Leaks!

### Galley

The extra clean galley is aft to port and features everything needed to keep the chef happy. Create an elegant meal or just a quick snack with ease in this fantastic cooking space!!

The wrap-around galley is designed for gourmet convenience with details like custom molded counters with integral back-splashes. The galley boasts double stainless steel sinks with hot/cold pressurized water.

- **NEW 2014** Seaward 6 gallon water heater
- Adler-Barbour refrigerator/freezer
- Hillerange Propane double burner stove with oven.

### Electronics and navigation

- Garmin 740 Chartplotter
- Instrument pod and Binnacle for instruments at helm
- Raymarine 4000 Drive unit on the Auto Pilot
- Raymarine ST 60 Wind Speed and Direction
- Autohelm ST 50 Speed and Depth
- Stereo with CD and MP3 jack and cockpit speakers
- Standard Horizon VHF with DSC
- Ritchie Compass at helm

## Electrical and Mechanical

### Electrical

- Xantrex True Charge 20 amp Battery Charger with remote panel
- Two group 29 house batteries
- Separate group 27 engine start battery
- Battery parallel switch
- 110 volt panel with circuit breakers
- 12 volt panel with circuit breakers
- LED lights in main salon
- LED Steaming and masthead anchor lights

### Mechanical

- Webasco 12000 BTU Air Conditioning with reverse cycle heat
- Jabsco Head, with **2016** re-build kit
- **All NEW 2015** Sanitation hoses
- Seaward F-600 110 and engine Water Heater
- Accumulator Tank on water system
- Freshwater Pump

### Sails and Rigging

- **Full Batten Main from UK 2 only years old**
- **Tides Marine Sail Track for mainsail**
- Hood Furling on 135 Genoa in Good Condition with new Sunbrella cover
- 110 Jib in Good Condition
- Doyle Asymmetrical Cruising Spinnaker with sock
- Garhauer Mainsheet Block and line
- **Most Running Rigging has been replaced over the last three years**
- Manual Back Stay adjuster
- Lewmar Folding 40" Wheel

### Engine

- **Perkins M-30 Diesel Engine with approximately 450 hours since complete re-build.**  
**Very Clean engine compartment**

#### **Recent service and improvements**

- Engine Cooling pump and impeller
- Engine Hoses
- Engine mounts
- Engine compartment sound proofing

- Max Prop three blade feathering prop

## Deck and Hull

- **Deck and Hull just Buffed and Waxed**
- **C-Cushions** closed cell foam Cockpit Cushions
- **NEW 2013** Stern rail back cushions
- All ports have been re-bedded and recently serviced
- **NEW 2014** Bomar Deck hatch in Salon
- Danforth Anchor with Chain and Rode
- Delta Anchor with Chain and Rode
- Maxwell Electric Windlass
- Wing Keel with 4 foot 4 inch draft
- Walk Through Transom with Swim platform and H&C shower
- Enclosed anchor well
- Teak Cockpit Table
- Bimini Top and Dodger
- **New Double lifelines with P&S gates**
- Swim platform and H&C shower

## Additional Information

### Negotiable

Zodiac Cadet 270 w/air floor, 17 in tubes, 8Ft 10in

Honda 2.3 hp, 4 stroke air cooled

## Исключения

---

При продаже яхты исключаются личные вещи владельца.

## Отказ от ответственности

---

Компания предоставляет описание судна или яхты добросовестно, но не может гарантировать точность этой информации, а также не ручается за техническое состояние. Покупатель должен проинструктировать своих агентов или оценщиков исследовать представленную информацию более подробно, по собственному желанию. Продажа судна или яхты, изменение цены или снятие с продажи будет происходить без предварительного уведомления.

# ФОТОГРАФИИ

On the water



Leaving the dock



On the water



At the dock



**Starboard side at the dock**



**Port side at the dock**



**Sails in Good Condition**



**Looking forward from helm**



**Companionway**



**Come on in**





**Large cockpit !!**



**Cockpit with Closed Cell Foam Cushions**



**Electronics at the helm**



**Helm**



**Helm**



**Looking aft to cockpit from Salon**



**Ready for dinner....**



**Bow**



**Clean anchor locker with windlass**



**Plenty of space below**



**Spacious Main Salon**



**Looking forward, privacy panels open**





Looking below from companionway



Dinner time



Starboard Side below



Looking aft in main salon



Nav Station



Standard Horizon VHF





**Navigation Station**



**Looking aft towards galley**



**Looking forward, privacy panels closed**



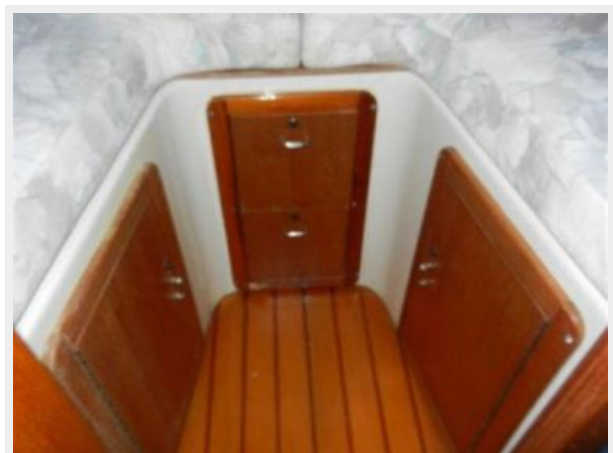
**Ready for overnight guests....**



**Guest berth**



**Storage under forward berth**



**Large Galley !**



**Dry storage locker in galley**



**Galley**



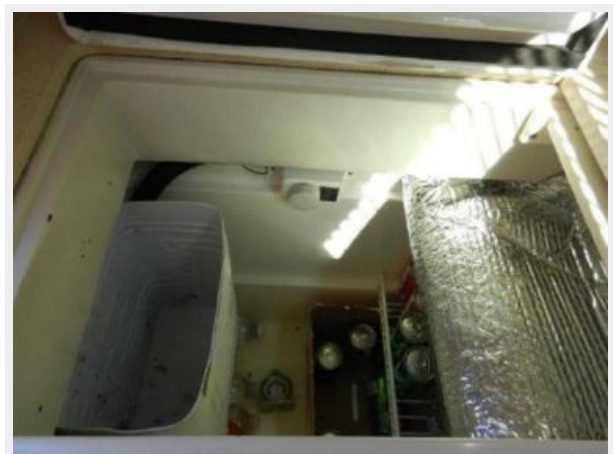
**Galley with stove/oven and double sink**



**Storage in galley**

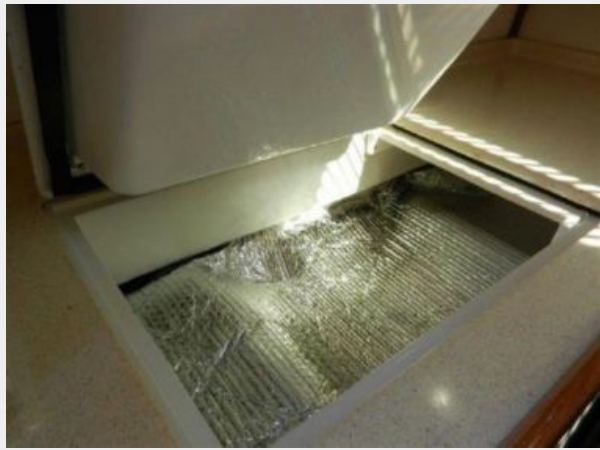


**Large refrigerator with freezer**





**Extra insulation for refrigerator**



**More Galley Storage**



**Large Head**

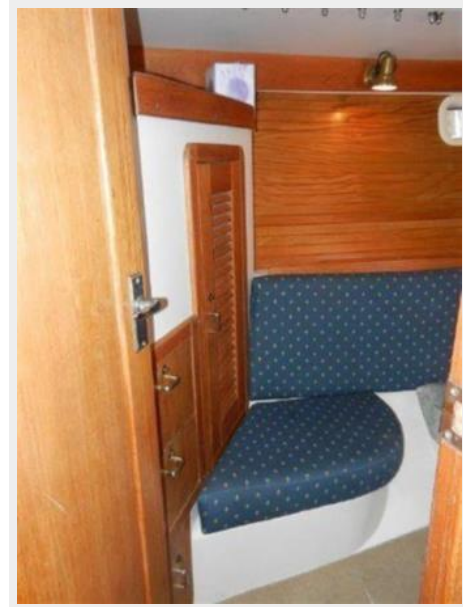


**Aft head**



### Aft Cabin storage and hanging locker

#### Aft Berth



#### Hanging Locker with shelves added



#### Remote panel for Battery Charger



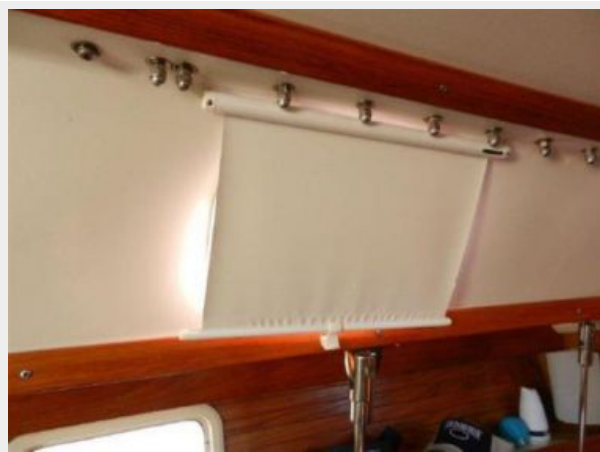
**Manuals, Charts**



**Oceanair Shades on all ports in mains salon**



**Oceanair Shades on all ports in main salon**



**Oceanair Shades on Hatches in main salon**



**Fan in Main Salon**



**Starboard Side, main salon**





**Doyle Cruising Spinnaker**



**Helm instruments**



**Raymarine Autopilot**



**Engine panel at helm**



**Lifesling**



**Starboard Lazerette**



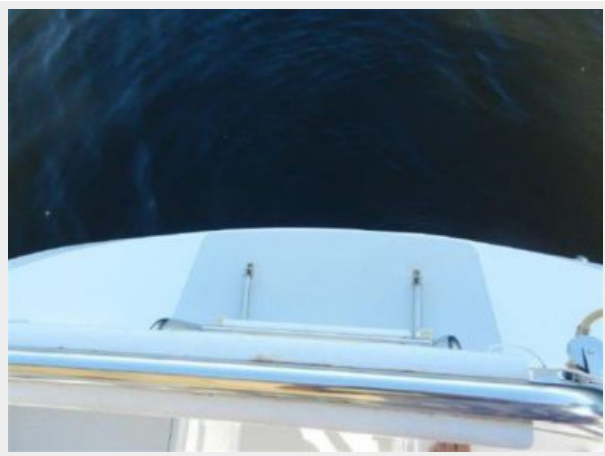
**Port Lazerette**



**Port side Lazerette**



**Walk thru transom with swim ladder**



**Propane Locker under cockpit seating**



**Hard Boom Vang**



**NEW Bomar Port**





**Solar Vent**



**All lines led aft, Starboard Side**



**All lines led aft, Port Side**



**Forespar Whisker Pole**



**Mid-ship Cleats**

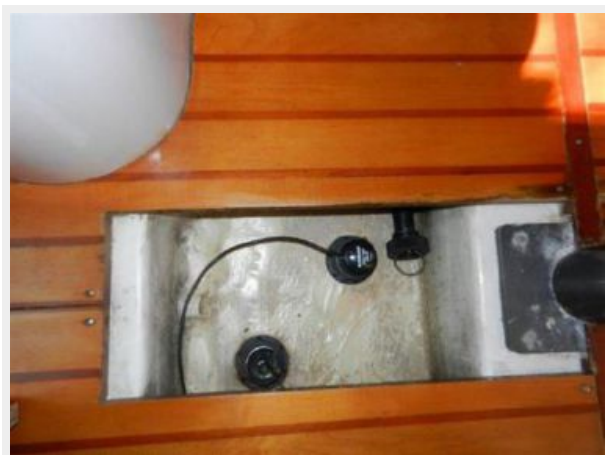


**Lewmar Winches**





**Bilge**



**Bilge**



**Companionway Ladder, engine below**



**Rebuilt Perkins 30 HP Engine**



### Very clean Perkins engine



### Engine access, aft cabin



### CLEAN Engine



### Stuffing box, Muffler



### NEW Engine Insulation



# КОНТАКТЫ

---

Андрей Шестаков (Andrey Shestakov) – ведущий яхтенный брокер отдела продаж яхт и судов компании Shestakov Yacht Sales Inc. Официальный представитель Shestakov Yacht Sales Inc. для русскоговорящих клиентов в центральном офисе компании в Майами/Форт Лодердейл/Флорида/США.

## Контактная информация

---

Email: [andrey@shestakovyachtsales.com](mailto:andrey@shestakovyachtsales.com)

Web: [shestakovyachtsales.com](http://shestakovyachtsales.com)

## Телефоны

---

Краснодарский край: **+7(918)465-66-44**

США, Майами, Флорида: **+1(954)274-4435**

## Время работы

---

Понедельник – Суббота: **9:00 - 21:00**  
EDT

Воскресенье: **Закрето**

## Адрес

---



Harbour Towne Marina, 850 NE 3rd St,  
STE 213, Dania, FL 33004